

**DRAWING NOTES**

- ① BLUE TINTED THERMAL UNITS
- ② SOLERA CURTAINWALL SYSTEM C/W SEMI OPAQUE THERMAL UNITS
- ③ ACM PANELS, SILVER METALLIC FINISH, TYPICAL
- ④ PREFINISHED RIBBED METAL SIDING, DARK GREY
- ⑤ SHOWROOM ENTRANCE AND VESTIBULE, PRODEMA WOOD GRAN PANELS
- ⑥ CONTINUOUS LED STRIP LIGHTING AROUND PERIMETER
- ⑦ SHOP WINDOWS, CLEAR THERMAL UNITS C/W BUTT SILICONE JOINTS
- ⑧ ALL ALUMINUM ENTRANCES AND O/H DOORS TO BE CLEAR ANODIZED FINISH, TYPICAL
- ⑨ PAINTED STEEL DOORS TO BE DARK GREY TO MATCH SIDING
- ⑩ VOLVO WOODMARK AS PER VOLVO SIGN PROGRAM
- ⑪ DEALERSHIP NAME SIGN AS PER VOLVO SIGN PROGRAM
- ⑫ SERVICE SIGN AS PER SIGN PROGRAM

**NOTES**

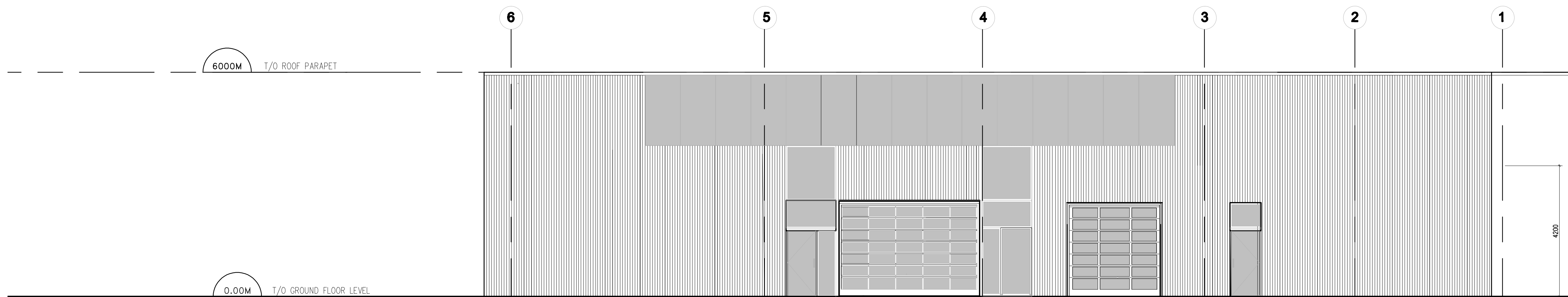
It is the responsibility of the appropriate contractor to check and verify all dimensions on site and report all errors and/or omissions to the Architect.  
 All contractors must comply with all pertinent codes and by-laws.  
 Do not scale drawings.  
 This drawing may not be used for construction until signed by the Architect.  
 Copyright reserved.

**LOCATION MAP**



**LEGAL DESCRIPTION**

PART OF LOTS 17 AND 18  
 REGISTERED PLAN 23  
 CITY OF OTTAWA



**EAST ELEVATION (MICHAEL ST.)**

**1 EAST ELEVATION**  
 A007 SCALE: 1:75

no.	date	revision
4	30 NOV. 2022	ISSUED FOR REVIEW
3	26 JUL. 2022	ISSUED FOR REVIEW
2	26 MAY 2022	ISSUED FOR REVIEW
1	12 OCT. 2021	ISSUED FOR REVIEW

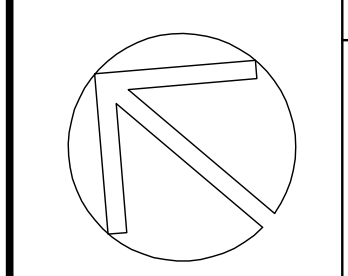
Stamp:
--------

**brian k. clark**  
**ARCHITECT**  
 141 Catherine Street, Suite 102  
 Ottawa, Ontario K2P 1C3  
 TEL: (613) 238-7412 · FAX: 238-1799  
 Email: bkclarkarchitect@on.albn.com

Project:  
 VOLVO ST. LAURENT  
 1300 MICHAEL STREET  
 OTTAWA, ONTARIO

Ottawa Ontario  
 Drawing:  
**EAST ELEVATION**

Project No. <b>1811</b>	Drawn By: <b>DC</b>	Scale: <b>1 : 75</b>
North Arrow:	Date: <b>12-OCT-2021</b>	Drawing No.: <b>A007</b>



D007-12-22-0012

**DRAWING NOTES**

- ① BLUE TINTED THERMAL UNITS
- ② SOLERA CURTAINWALL SYSTEM C/W SEMI OPAQUE THERMAL UNITS
- ③ ACM PANELS, SILVER METALLIC FINISH, TYPICAL
- ④ PREFINISHED RIBBED METAL SIDING, DARK GREY
- ⑤ SHOWROOM ENTRANCE AND VESTIBULE, PROCEMA WOOD GRAIN PANELS
- ⑥ CONTINUOUS LED STRIP LIGHTING AROUND PERIMETER
- ⑦ SHOP WINDOWS, CLEAR THERMAL UNITS C/W BUTT SILICONE JOINTS
- ⑧ ALL ALUMINUM ENTRANCES AND O/H DOORS TO BE CLEAR ANODIZED FINISH, TYPICAL
- ⑨ PAINTED STEEL DOORS TO BE DARK GREY TO MATCH SIDING
- ⑩ VOLVO WOODMARK AS PER VOLVO SIGN PROGRAM
- ⑪ DEALERSHIP NAME SIGN AS PER VOLVO SIGN PROGRAM
- ⑫ SERVICE SIGN AS PER SIGN PROGRAM

**NOTES**

It is the responsibility of the appropriate contractor to check and verify all dimensions on site and report all errors and or omissions to the Architect.  
 All contractors must comply with all pertinent codes and by-laws.  
 Do not scale drawings.  
 This drawing may not be used for construction until signed by the Architect.  
 Copyright reserved.

**LOCATION MAP**



**LEGAL DESCRIPTION**

PART OF LOTS 17 AND 18  
 REGISTERED PLAN 23  
 CITY OF OTTAWA

no.	date	revision
4	30 NOV. 2022	ISSUED FOR REVIEW
3	28 JUL. 2022	ISSUED FOR REVIEW
2	26 MAY 2022	ISSUED FOR REVIEW
1	12 OCT. 2021	ISSUED FOR REVIEW

Stamp:

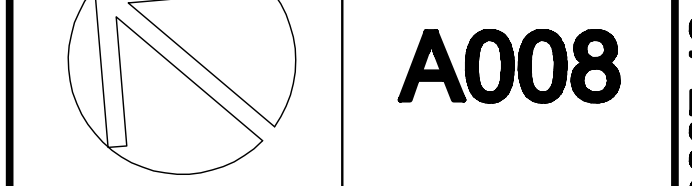
**brian k. clark**  
**ARCHITECT**  
 141 Catherine Street, Suite 102  
 Ottawa, Ontario K2P 1C3  
 TEL: (613) 238-7412 · FAX: 238-1799  
 Email: bkclarkarchitect@on.albn.com

Project:  
 VOLVO ST. LAURENT  
 1300 MICHAEL STREET  
 OTTAWA, ONTARIO

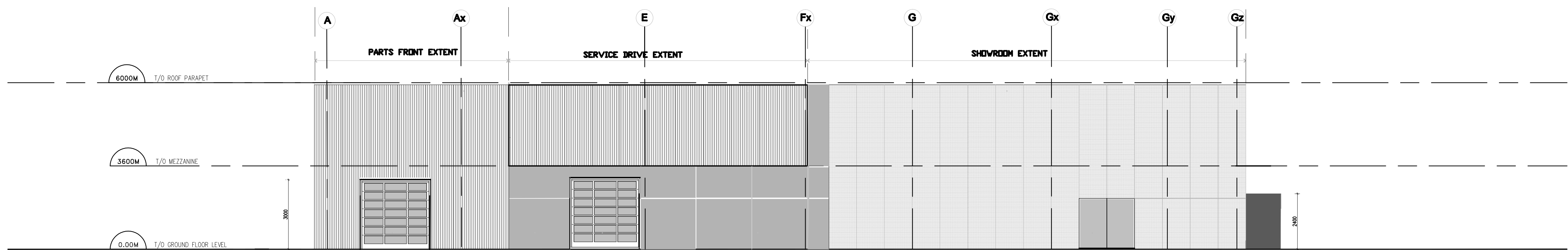
OTTAWA, ONTARIO

Drawing:  
 NORTH ELEVATION

Project No. <b>1811</b>	Drawn By: <b>DC</b>	Scale: <b>1 : 100</b>
North Arrow:	Date: <b>12-OCT-2021</b>	Drawing No.:



**A008**



**NORTH ELEVATION (QUEENSWAY)**

**1** NORTH ELEVATION UNFOLDED  
 A008 SCALE: 1:100

**DRAWING NOTES**

- ① BLUE TINTED THERMAL UNITS
- ② SOLERA CURTAINWALL SYSTEM C/W SEMI OPAQUE THERMAL UNITS
- ③ ACM PANELS, SILVER METALLIC FINISH, TYPICAL
- ④ PREFINISHED RIBBED METAL SIDING, DARK GREY
- ⑤ SHOWROOM ENTRANCE AND VESTIBULE, PRODEMA WOOD GRAN PANELS
- ⑥ CONTINUOUS LED STRIP LIGHTING AROUND PERIMETER
- ⑦ SHOP WINDOWS, CLEAR THERMAL UNITS C/W BUTT SILICONE JOINTS
- ⑧ ALL ALUMINUM ENTRANCES AND O/H DOORS TO BE CLEAR ANODIZED FINISH, TYPICAL
- ⑨ PAINTED STEEL DOORS TO BE DARK GREY TO MATCH SIDING
- ⑩ VOLVO WOODMARK AS PER VOLVO SIGN PROGRAM
- ⑪ DEALERSHIP NAME SIGN AS PER VOLVO SIGN PROGRAM
- ⑫ SERVICE SIGN AS PER SIGN PROGRAM

**NOTES**

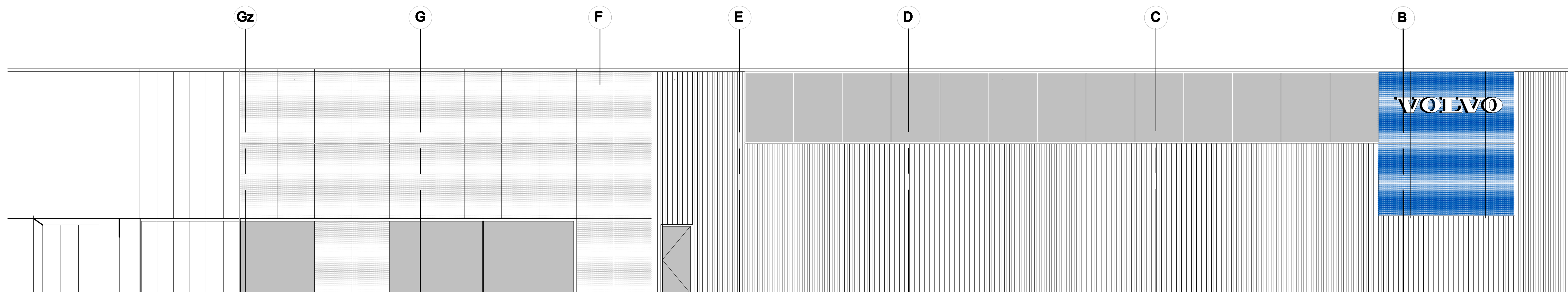
It is the responsibility of the appropriate contractor to check and verify all dimensions on site and report all errors and or omissions to the Architect.  
 All contractors must comply with all pertinent codes and by-laws.  
 Do not scale drawings.  
 This drawing may not be used for construction until signed by the Architect.  
 Copyright reserved.

**LOCATION MAP**



**LEGAL DESCRIPTION**

PART OF LOTS 17 AND 18  
 REGISTERED PLAN 23  
 CITY OF OTTAWA



**SOUTH ELEVATION (PARISIEN)**

**1 SOUTH ELEVATION**  
 A005 SCALE: 1:75

no.	date	revision
4	30 NOV. 2022	ISSUED FOR REVIEW
3	28 JUL. 2022	ISSUED FOR REVIEW
2	26 MAY 2022	ISSUED FOR REVIEW
1	12 OCT. 2021	ISSUED FOR REVIEW

Stamp:

**brian k. clark**  
**ARCHITECT**  
 141 Catherine Street, Suite 102  
 Ottawa, Ontario K2P 1C3  
 TEL: (613) 238-7412 · FAX: 238-1799  
 Email: bkclarkarchitect@on.albn.com

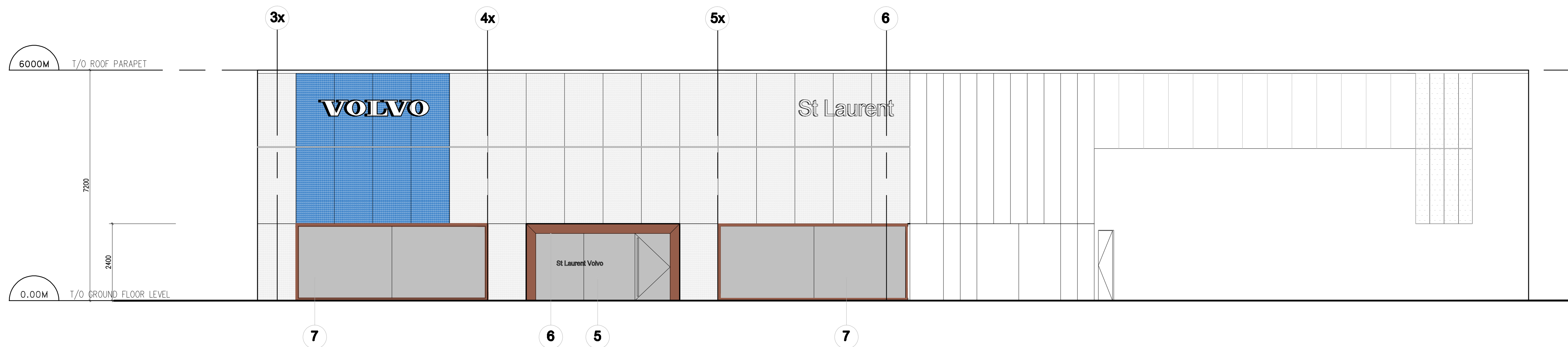
Project:  
 VOLVO ST. LAURENT  
 1300 MICHAEL STREET  
 OTTAWA, ONTARIO

OTTAWA ONTARIO  
 Drawing:  
**SOUTH ELEVATION**

Project No. 1811 Drawn By: DC Scale: 1 : 75  
 Date: 12-OCT-2021  
 North Arrow:

Drawing No. **A006**

D007-12-22-0012  
 18651



# WEST ELEVATION (ST. LAURENT)

**1** WEST ELEVATION  
A005 SCALE: 1:75

## DRAWING NOTES

- ① BLUE TINTED THERMAL UNITS
- ② SOLERA CURTAINWALL SYSTEM C/W SEMI OPAQUE THERMAL UNITS
- ③ ACM PANELS, SILVER METALLIC FINISH, TYPICAL
- ④ PREFINISHED RIBBED METAL SIDING, DARK GREY
- ⑤ SHOWROOM ENTRANCE AND VESTIBULE, PRODEMA WOOD GRAN PANELS
- ⑥ CONTINUOUS LED STRIP LIGHTING AROUND PERIMETER
- ⑦ SHOP WINDOWS, CLEAR THERMAL UNITS C/W BUTT SILICONE JOINTS
- ⑧ ALL ALUMINUM ENTRANCES AND O/H DOORS TO BE CLEAR ANODIZED FINISH, TYPICAL
- ⑨ PAINTED STEEL DOORS TO BE DARK GREY TO MATCH SIDING
- ⑩ VOLVO WOODMARK AS PER VOLVO SIGN PROGRAM
- ⑪ DEALERSHIP NAME SIGN AS PER VOLVO SIGN PROGRAM
- ⑫ SERVICE SIGN AS PER SIGN PROGRAM

## NOTES

It is the responsibility of the appropriate contractor to check and verify all dimensions on site and report all errors and or omissions to the Architect.  
All contractors must comply with all pertinent codes and by-laws.  
Do not scale drawings.  
This drawing may not be used for construction until signed by the Architect.  
Copyright reserved.

## LOCATION MAP



## LEGAL DESCRIPTION

PART OF LOTS 17 AND 18  
REGISTERED PLAN 23  
CITY OF OTTAWA

no.	date	revision
4	30 NOV. 2022	ISSUED FOR REVIEW
3	28 JUL. 2022	ISSUED FOR REVIEW
2	26 MAY 2022	ISSUED FOR REVIEW
1	12 OCT. 2021	ISSUED FOR REVIEW

no.	date	revision

**brian k. clark**  
ARCHITECT  
141 Catherine Street, Suite 102  
Ottawa, Ontario K2P 1C3  
TEL: (613) 238-7412 · FAX: 238-1799  
Email: bkclarkarchitect@on.albn.com

Project:  
VOLVO ST. LAURENT  
1300 MICHAEL STREET  
OTTAWA, ONTARIO

OTTAWA ONTARIO  
Drawing:

WEST ELEVATION

Project No. 1811 Drawn By: DC Scale: 1 : 75  
Date: 12-OCT-2021

North Arrow: Drawing No. **A005**

D007-12-22-0012  
18651