

ELEVATION NOTES

- Elevations shown are geodetic and are referred to the CGVD28 geodetic datum, derived from City of Ottawa LRT control monument 2011-0006 having an elevation of 72.627 metres.
- It is the responsibility of the user of this information to verify that the job benchmark has not been altered or disturbed and that its relative elevation and description agrees with the information shown on this drawing.

TOPOGRAPHIC SKETCH OF
 "1300 MICHAEL STREET"
 CITY OF OTTAWA
 Prepared by Annis, O'Sullivan, Vollebek Ltd.

Scale 1 : 300
 12 9 6 3 0 3 6 9 12 Metres

Feb. 24, 2021
 Date
 E. H. Herweyer
 Ontario Land Surveyor

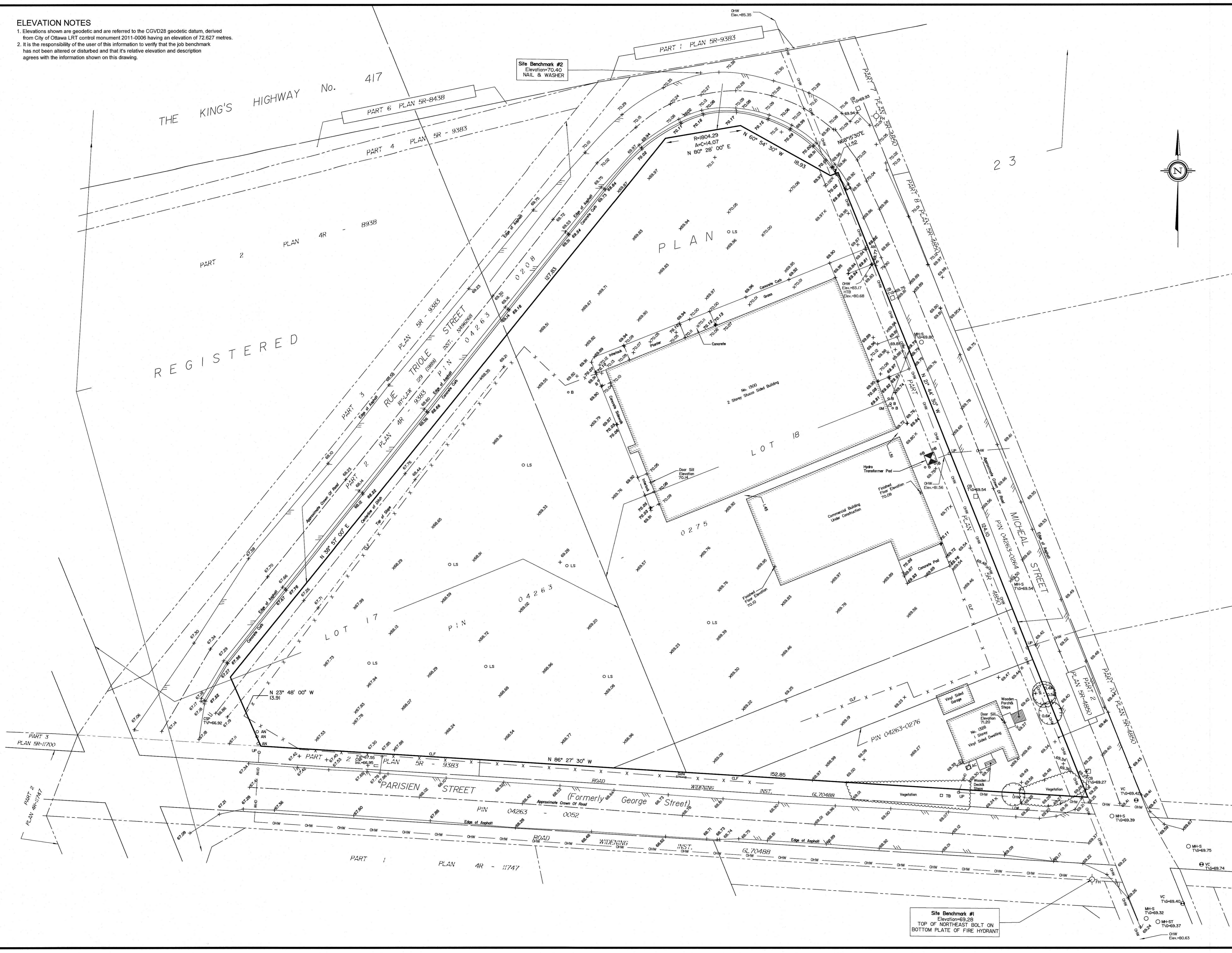
Metric
 DISTANCES SHOWN ON THIS PLAN ARE IN METRES AND CAN BE CONVERTED TO FEET BY DIVIDING BY 0.3048

Notes & Legend

- | | | |
|---------|---|----------------------------------|
| (AOG) | - | Annis, O'Sullivan, Vollebek Ltd. |
| ○ MH-ST | - | Maintenance Hole (Storm Sewer) |
| ○ MH-S | - | Maintenance Hole (Sanitary) |
| ⊙ VC | - | Valve Chamber (Watermain) |
| — OHW | - | Overhead Wires |
| ○ UP | - | Utility Pole |
| AN | - | Anchor |
| HTB | - | Hydro Transformer Bolt |
| □ CB | - | Catch Basin |
| CSP | - | Corrugated Steel Pipe |
| ⊙ FH | - | Fire Hydrant |
| Inv. | - | Invert |
| T/G | - | Top of Grate |
| ⊙ GM | - | Gas Meter |
| T/P | - | Top of Pipe |
| ⊙ TB | - | Unidentified Terminal Box |
| ⊙ | - | Deciduous Tree |
| CLF | - | Chain Link Fence |
| BF | - | Board Fence |
| — | - | Gate |
| LS | - | Light Standard |
| □ AC | - | Air Conditioner |
| ⊙ | - | Hydro Transformer Pad |
| ⊙ | - | Diameter |
| + 65.00 | - | Location of Elevations |
| + 65.00 | - | Top of Concrete Curb Elevation |
| C/L | - | Centreline |
| — | - | Property Line |

Caution
 This is NOT a Plan of Survey and shall not be used except for the purpose indicated in the title block.
 Boundary information compiled from (AOG) Plan dated August 7, 2002. Topographical Data was Surveyed January 25, 2021.

SITE AREA = 11456 m²



Site Benchmark #1
 Elevation=69.28
 TOP OF NORTH-EAST BOLT ON
 BOTTOM PLATE OF FIRE HYDRANT

Site Benchmark #2
 Elevation=70.40
 NAIL & WASHER