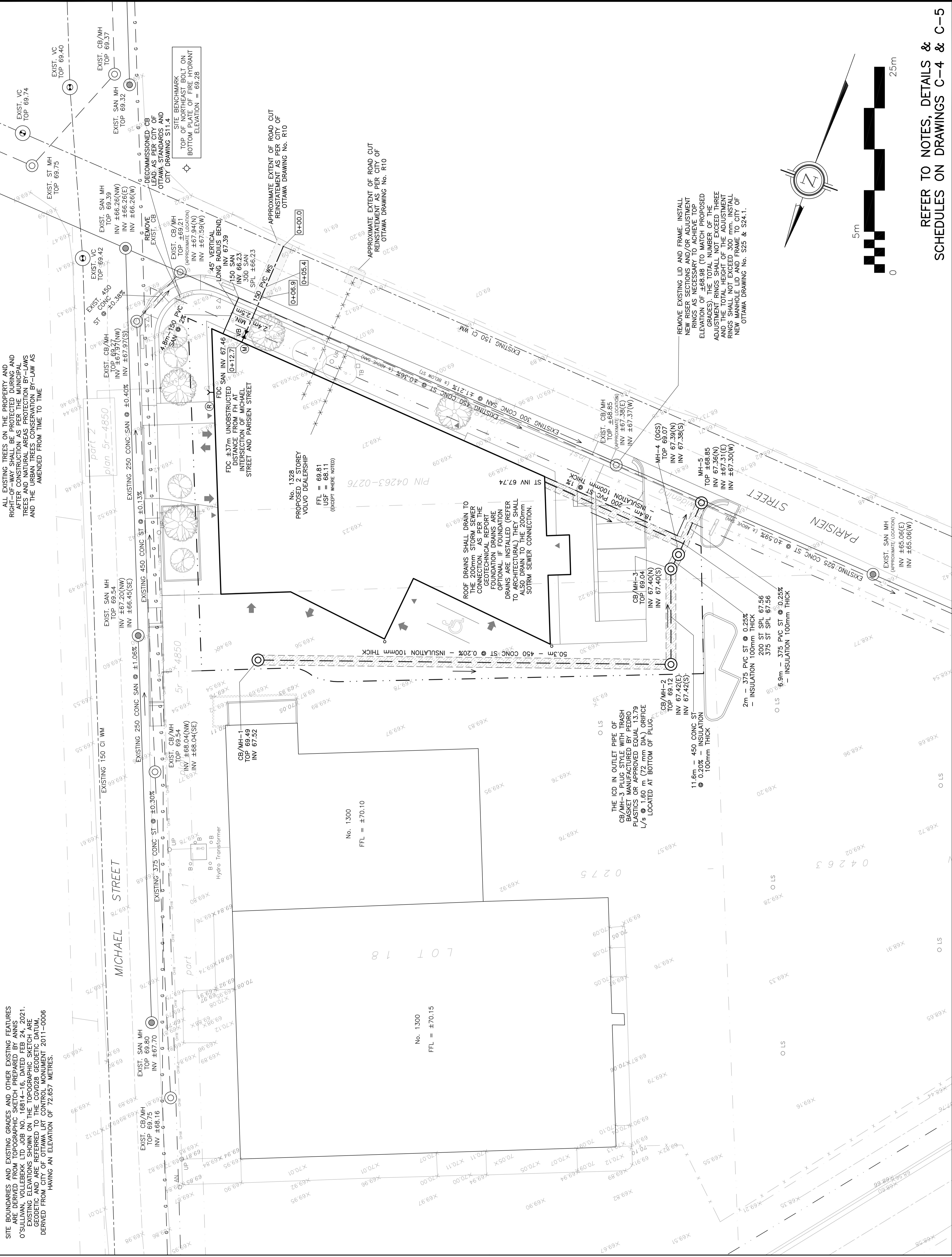


SITE BOUNDARIES AND EXISTING GRADES AND OTHER EXISTING FEATURES ARE DERIVED FROM TOPOGRAPHIC SKETCH PREPARED BY ANNIS O'SULLIVAN, VOLLEBECK LTD. JOB NO. 16814-16, DATED FEB 24, 2021. EXISTING ELEVATIONS SHOWN ON THE TOPOGRAPHIC SKETCH ARE GEODETIC AND ARE REFERRED TO THE COVID28 GEODETIC DATUM, DERIVED FROM CITY OF OTTAWA LRT CONTROL MONUMENT 2011-0006 HAVING AN ELEVATION OF 72.657 METRES.

ALL EXISTING TREES ON THE PROPERTY AND RIGHT-OF-WAY SHALL BE PROTECTED DURING AND AFTER CONSTRUCTION AS PER THE MUNICIPAL TREES AND NATURAL AREAS PROTECTION BY-LAWS AND THE URBAN TREES CONSERVATION BY-LAW AS AMENDED FROM TIME TO TIME



LEGEND

- CB CATCH-BASIN
- MH STORM MANHOLE
- CB/MH CATCH-BASIN/MANHOLE
- MH SANITARY MANHOLE
- VC VALVE CHAMBER
- VB VALVE & VALVE BOX
- FH FIRE HYDRANT
- FDC FIRE DEPARTMENT CONNECTION
- SAN SANITARY SEWER
- ST STORM SEWER
- WS/WM WATER SERVICE/WATERMAIN
- SPL SPRINGLINE OF PIPE
- INV INVERT OF PIPE
- M WATER METER
- R REMOTE WATER METER
- FFL FINISHED FLOOR ELEVATION
- USF UNDERSIDE OF FOOTING
- PROPERTY LINE
- EXISTING GRADE ELEVATION
- CR.Z. CRITICAL ROOT ZONE

KEY PLAN



No.	DATE	REVISION
1	NOV 2-21	PRELIMINARY
2	JAN 11-22	ISSUED FOR COORDINATION
3	JAN 12-22	ISSUED FOR APPROVAL
4	JUL 28-22	RE-ISSUED FOR APPROVAL
5	JAN 25-23	RE-ISSUED FOR APPROVAL

D. B. GRAY ENGINEERING INC.
 Professional Engineers
 700 Long Point Circle
 Ottawa, Ontario
 d.gray@dbgrayengineering.com
 613-235-8044

**PROPOSED 2 STOREY
 VOLVO DEALERSHIP
 1328 MICHAEL STREET
 OTTAWA, ONTARIO**

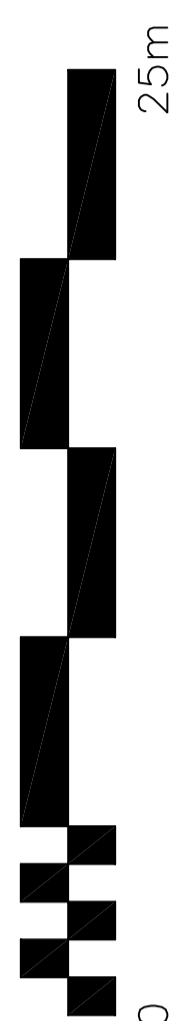
SITE SERVICING PLAN

Engineer's Seal
 D.B. GRAY
 PROFESSIONAL ENGINEER
 17016502
 JAN 25-23
 BOARD OF ENGINEERS
 OF ONTARIO

Drawn: D.B.G.
 H. Scale: 1:200
 V. Scale: 1:20
 Date: NOV 2-21
 Job No.: 21017

Drawing No. **C-1**
 of **8**

NOT VALID UNLESS
 SIGNED & DATED



REFER TO NOTES, DETAILS & SCHEDULES ON DRAWINGS C-4 & C-5