

DRAWING NOTES

- 1 BLUE TINTED THERMAL UNITS
- 2 SOLAR CONTROLLED STEEL C/W SOLI GRAYE THERMAL UNITS
- 3 K&I PANELS, SILVER METALLIC FINISH, TYPICAL
- 4 PROMINENT RISER METAL, SINK, DARK GREY
- 5 SHOWROOM ENTRANCE AND VESTIBULE, PROXIMA WOOD GRANI PANELS
- 6 CONTINUOUS LED STRIP LIGHTING AROUND PERIMETER
- 7 SHOP WINDOWS, CLEAR THERMAL UNITS C/W BUTT SILICONE JOINTS FINISH, TYPICAL
- 8 ALL ALUMINIUM ENTRANCES AND O/H DOORS TO BE CLEAR ANODIZED FINISH, TYPICAL
- 9 PAINTED STEEL DOORS TO BE DARK GREY TO MATCH SINK
- 10 VOLVO WOODWORK AS PER VOLVO SIGN PROGRAM
- 11 WOODSHEEP WAVE SIGN AS PER VOLVO SIGN PROGRAM
- 12 SERVICE SIGN AS PER SIGN PROGRAM

NOTES

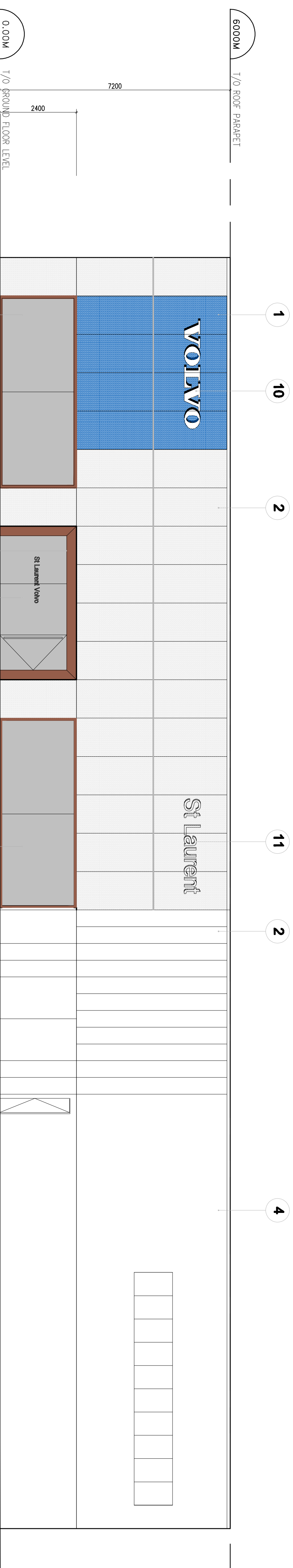
It is the responsibility of the appropriate authority to ensure that all drawings on site and report all errors and/or omissions to the Architect.
All contractors must comply with all pertinent codes and by-laws.
Do not scale drawings.
This drawing may not be used for construction until signed by the Architect.
Copyright reserved.

LOCATION MAP



LEGAL DESCRIPTION

PART OF LOTS 17 AND 18
REGISTERED PLAN 23
CITY OF OTTAWA



WEST ELEVATION

1 WEST ELEVATION
A005 SCALE: 1:75

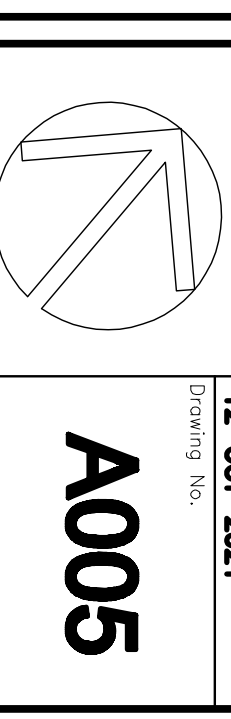
| no. | date | revision | Stamp: |
|-----|--------------|-------------------|--------|
| 3 | 29 JUL. 2022 | ISSUED FOR REVIEW | |
| 2 | 26 MAY 2022 | ISSUED FOR REVIEW | |
| 1 | 12 OCT. 2021 | ISSUED FOR REVIEW | |

brian k. clark
A·R·C·H·I·T·E·C·T
141 Catherine Street, Suite 102
Ottawa, Ontario K2P 1C3
TEL: (613) 235-7412 • FAX: 235-1799
Email: bksarchitect@on.aiaa.com

VOLVO ST. LAURENT
1300 MICHAEL STREET
OTTAWA, ONTARIO

WEST ELEVATION

Project No. **1811** Drawn By **DC** Scale **1 : 75**
North Arrow Date **12-OCT-2021**
Drawing No. **A005**



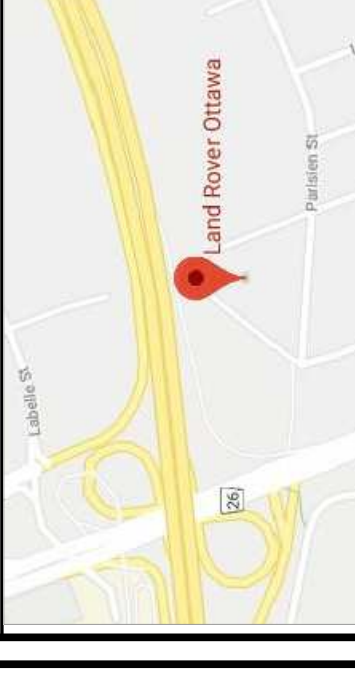
DRAWING NOTES

- ① BLUE TINTED THERMAL UNITS
- ② SOLERA CERAMAMM SYSTEM 0/4 SEMI OPaque THERMAL UNITS
- ③ ACM PANELS, SILVER METALLIC FINISH, TYPICAL
- ④ PREFINISHED RIBBED METAL SINGS, DARK GREY
- ⑤ SHOWROOM ENTRANCE AND VESTIBULE, PROFORMA WOOD GRAIN PANELS
- ⑥ CONTINUOUS LED STRIP LIGHTING AROUND PERIMETER
- ⑦ SHOP WINDOWS, CLEAR THERMAL UNITS 0/4 BUTT SILICONE JOINTS FINISH, TYPICAL
- ⑧ ALL ALUMINUM ENTRANCES AND 0/41 DOORS TO BE CLEAR ANODIZED FINISH, TYPICAL
- ⑨ PAINTED STEEL DOORS TO BE DARK GREY TO MATCH SINGS
- ⑩ VOLVO WOODMARK AS PER VOLVO SIGN PROGRAM
- ⑪ DEALERSHIP NAME SIGN AS PER VOLVO SIGN PROGRAM
- ⑫ SERVICE SIGN AS PER SIGN PROGRAM

NOTES

It is the responsibility of the appropriate authorities to verify the accuracy of the information on site and report all errors and or omissions to the Architect.
All contractors must comply with all pertinent codes and by-laws.
Do not scale drawings.
This drawing may not be used for construction until signed by the Architect.
Copyright reserved.

LOCATION MAP



LEGAL DESCRIPTION

PART OF LOTS 17 AND 18
REGISTERED PLAN 23
CITY OF OTTAWA

| No. | Date | revision |
|-----|--------------|-------------------|
| 3 | 28 JUL. 2022 | ISSUED FOR REVIEW |
| 2 | 26 MAY 2022 | ISSUED FOR REVIEW |
| 1 | 12 OCT. 2021 | ISSUED FOR REVIEW |

brian k. clark
A.R.C.H.I.T.E.C.T

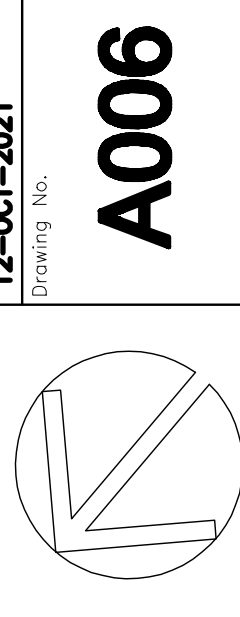
141 Catherine Street, Suite 102
Ottawa, Ontario K2P 1C3
TEL: (613) 238-7412 · FAX: 238-1799
Email: bkc@karchitect.com

VOLVO ST. LAURENT
1300 MICHAEL STREET
OTTAWA, ONTARIO

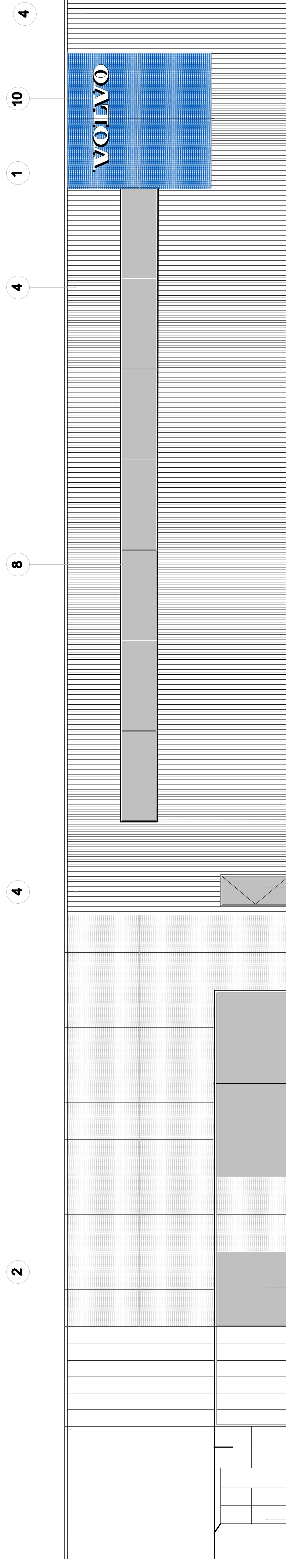
OTTAWA, ONTARIO

SOUTH ELEVATION

Project No. **1811** Drawn By **DC** Scale: **1 : 75**
North Arrow: Class: **12-OCT-2021**
Drawing No.



1 SOUTH ELEVATION
A005 SCALE: 1:75



SOUTH ELEVATION

DRAWING NOTES

- ① BLUE TINTED THERMAL UNITS
- ② SOLERA CURTAINWALL SYSTEM C/W SEMI OPAQUE THERMAL UNITS
- ③ ACM PANELS, SILVER METALLIC FINISH, TYPICAL
- ④ PREFINISHED RIBBED METAL SIDING, DARK GREY
- ⑤ SHOWROOM ENTRANCE AND VESTIBULE, PRODEMA WOOD GRAN PANELS
- ⑥ CONTINUOUS LED STRIP LIGHTING AROUND PERIMETER
- ⑦ SHOP WINDOWS, CLEAR THERMAL UNITS C/W BUTT SILICONE JOINTS
- ⑧ ALL ALUMINUM ENTRANCES AND O/H DOORS TO BE CLEAR ANODIZED FINISH, TYPICAL
- ⑨ PAINTED STEEL DOORS TO BE DARK GREY TO MATCH SIDING
- ⑩ VOLVO WOODMARK AS PER VOLVO SIGN PROGRAM
- ⑪ DEALERSHIP NAME SIGN AS PER VOLVO SIGN PROGRAM
- ⑫ SERVICE SIGN AS PER SIGN PROGRAM

NOTES

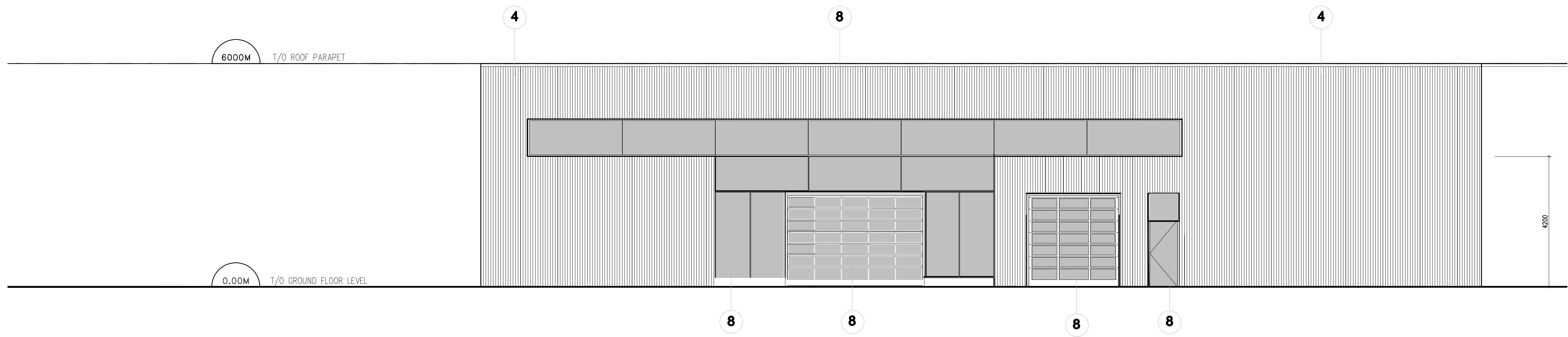
It is the responsibility of the appropriate contractor to check and verify all dimensions on site and report all errors and/or omissions to the Architect.
 All contractors must comply with all pertinent codes and by-laws.
 Do not scale drawings.
 This drawing may not be used for construction until signed by the Architect.
 Copyright reserved.

LOCATION MAP



LEGAL DESCRIPTION

PART OF LOTS 17 AND 18
 REGISTERED PLAN 23
 CITY OF OTTAWA



EAST ELEVATION

1 EAST ELEVATION
 A007 SCALE: 1:75

| | | |
|-----|--------------|-------------------|
| no. | date | revision |
| 3 | 26 JUL. 2022 | ISSUED FOR REVIEW |
| 2 | 26 MAY 2022 | ISSUED FOR REVIEW |
| 1 | 12 OCT. 2021 | ISSUED FOR REVIEW |

Stamp:

brian k. clark
ARCHITECT
 141 Catherine Street, Suite 102
 Ottawa, Ontario K2P 1C3
 TEL: (613) 238-7412 · FAX: 238-1799
 Email: bkclarkarchitect@on.albn.com

Project:
 VOLVO ST. LAURENT
 1300 MICHAEL STREET
 OTTAWA, ONTARIO

Ottawa Ontario
 Drawing:
EAST ELEVATION

Project No. 1811 Drawn By: DC Scale: 1 : 75
 Date: 12-OCT-2021
 North Arrow:

Drawing No. **A007**

D007-12-22-0012
18651

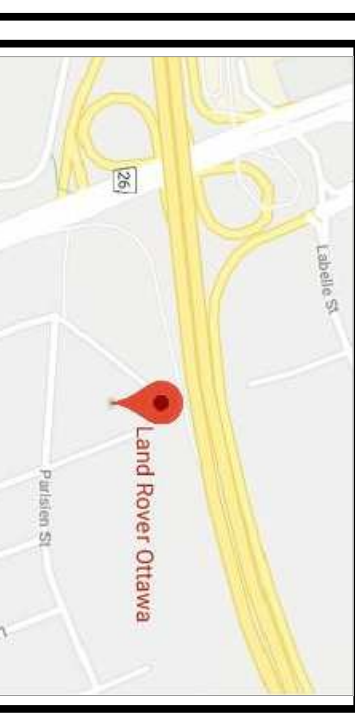
DRAWING NOTES

- 1 BLUE TINTED THERMAL UNITS
- 2 SOLAR CONTROLLED STEEL C/W SOLI GRADE THERMAL UNITS
- 3 KALI PANELS, SILVER METALLIC FINISH, TYPICAL
- 4 PROMEXED MIBED METAL SLATE, DARK GREY
- 5 SHOWROOM ENTRANCE AND VESTIBULE, PROXIMA WOOD GRAIN PANELS
- 6 CONTIGUOUS LED STRIP LIGHTING AROUND PERIMETER
- 7 SHOP WINDOWS, CLEAR THERMAL UNITS C/W BUTT SILICONE JOINTS
- 8 ALL ALUMINIUM ENTRANCES AND O/HI DOORS TO BE CLEAR ANODIZED FINISH, TYPICAL
- 9 PAINTED STEEL DOORS TO BE DARK GREY TO MATCH SLATE
- 10 VOLVO WOODWORK AS PER VOLVO SIGN PROGRAM
- 11 GOLFESPER WINE SIGN AS PER VOLVO SIGN PROGRAM
- 12 SERVICE SIGN AS PER SIGN PROGRAM

NOTES

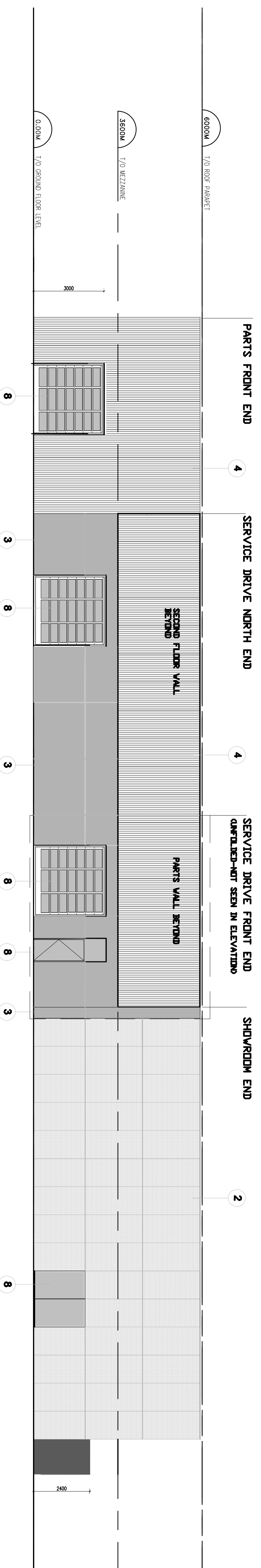
It is the responsibility of the appropriate authority to ensure that all drawings on site and report all errors and/or omissions to the Architect.
All contractors must comply with all pertinent codes and by-laws.
Do not scale drawings.
This drawing may not be used for construction until signed by the Architect.
Copyright reserved.

LOCATION MAP



LEGAL DESCRIPTION

PART OF LOTS 17 AND 18
REGISTERED PLAN 23
CITY OF OTTAWA



NORTH ELEVATION (UNFOLDED)

1 NORTH ELEVATION UNFOLDED
SCALE: 1:100
A008

| no. | date | revision | Stamp: |
|-----|--------------|-------------------|--------|
| 3 | 28 JUL 2022 | ISSUED FOR REVIEW | |
| 2 | 26 MAY 2022 | ISSUED FOR REVIEW | |
| 1 | 12 OCT. 2021 | ISSUED FOR REVIEW | |

brian k. clark
A·R·C·H·I·T·E·C·T
141 Catherine Street, Suite 102
Ottawa, Ontario K2P 1C3
TEL: (613) 235-7412 • FAX: 235-1799
Email: bksarchitect@omni.ca

VOLVO ST. LAURENT
1300 MICHAEL STREET
OTTAWA, ONTARIO

OTTAWA, ONTARIO
NORTH ELEVATION

Project No: **1811** Drawn By: **DC** Scale: **1 : 100**
North Arrow: Date: **12-OCT-2021**
Drawing No: **A008**