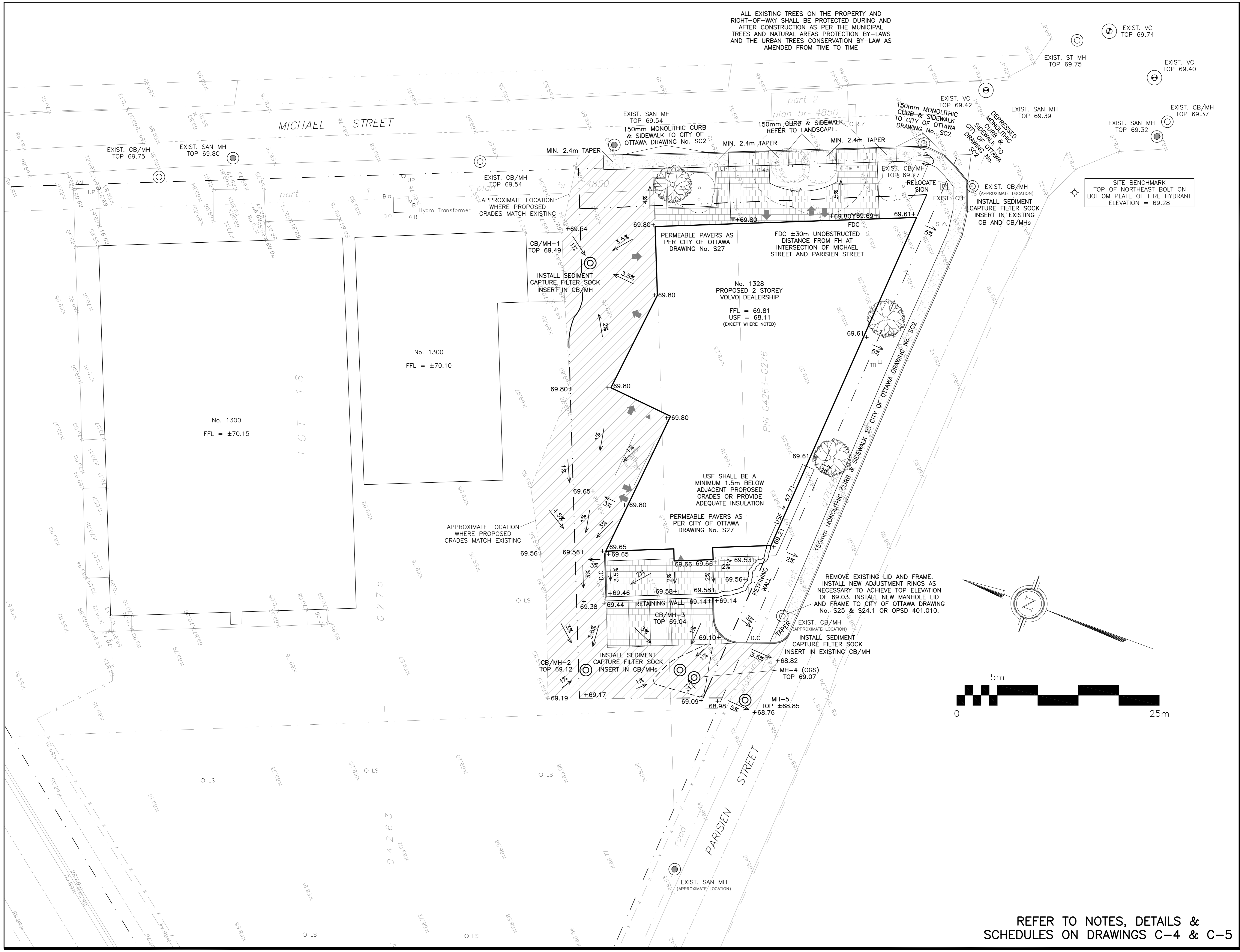


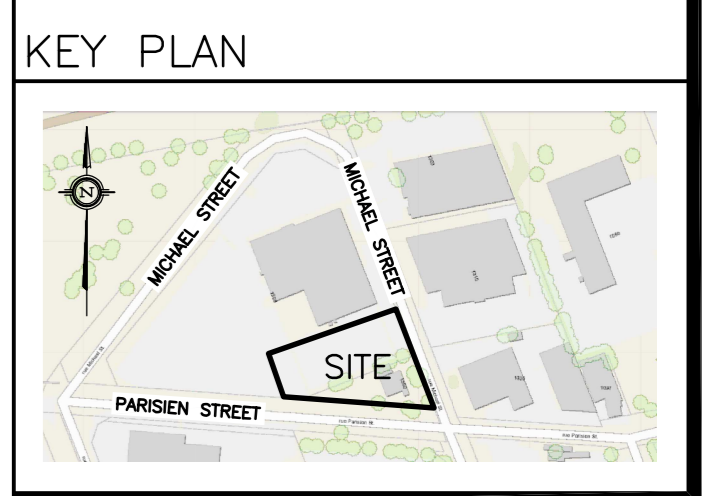
ALL EXISTING TREES ON THE PROPERTY AND RIGHT-OF-WAY SHALL BE PROTECTED DURING AND AFTER CONSTRUCTION AS PER THE MUNICIPAL TREES AND NATURAL AREAS PROTECTION BY-LAWS AND THE URBAN TREES CONSERVATION BY-LAW AS AMENDED FROM TIME TO TIME



SITE BENCHMARK
TOP OF NORTHEAST BOLT ON
BOTTOM PLATE OF FIRE HYDRANT
ELEVATION = 69.28

LEGEND

- CB [Symbol] CATCH-BASIN
- MH [Symbol] STORM MANHOLE
- CB/MH [Symbol] CATCH-BASIN/MANHOLE
- MH [Symbol] SANITARY MANHOLE
- VC [Symbol] VALVE CHAMBER
- FH [Symbol] FIRE HYDRANT
- FDC [Symbol] FIRE DEPARTMENT CONNECTION
- FFL [Symbol] FINISHED FLOOR ELEVATION
- USF [Symbol] UNDERSIDE OF FOOTING
- - - - - PROPERTY LINE
- X 99.99 EXISTING GRADE ELEVATION
- + 99.99 PROPOSED GRADE ELEVATION
- 2% PROPOSED SLOPE OF GRADE
- [Symbol] 150mm BARRIER CURB
- D.C. DEPRESSED CURB
- C.R.Z. CRITICAL ROOT ZONE
- [Symbol] PAVEMENT
- [Symbol] CONCRETE
- [Symbol] PERMEABLE PAVERS



No.	DATE	REVISION
3	JAN 12-22	ISSUED FOR APPROVAL
2	JAN 11-22	ISSUED FOR COORDINATION
1	NOV 2-21	PRELIMINARY

D. B. GRAY ENGINEERING INC.
Stormwater Management - Grading & Drainage - Storm & Sanitary Sewers - Watermain
700 Long Point Circle 613-425-8044
Ottawa, Ontario d.gray@dbgrayengineering.com

Project
PROPOSED 2 STOREY VOLVO DEALERSHIP
1328 MICHAEL STREET
OTTAWA, ONTARIO

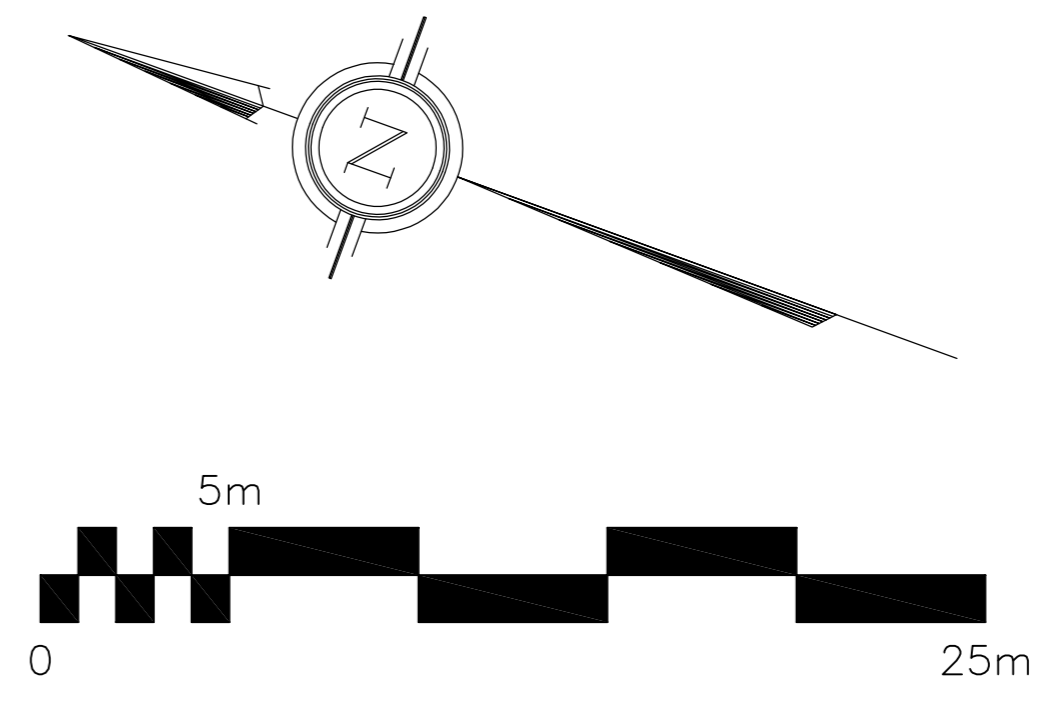
Drawing Title
GRADING PLAN AND EROSION & SEDIMENT CONTROL PLAN

Engineer's Seal

 NOT VALID UNLESS SIGNED & DATED

Drawn D.B.G.
H. Scale 1:200
V. Scale
Date NOV 2-21
Job No. 21014

Drawing No.
C-3
of 6



REFER TO NOTES, DETAILS & SCHEDULES ON DRAWINGS C-4 & C-5