

**DRAWING NOTES**

- ① BLUE TINTED THERMAL UNITS
- ② SOLERA CURTAINWALL SYSTEM C/W SEMI OPAQUE THERMAL UNITS
- ③ ACM PANELS, SILVER METALLIC FINISH, TYPICAL
- ④ PREFINISHED RIBBED METAL SIDING, DARK GREY
- ⑤ SHOWROOM ENTRANCE AND VESTIBULE, PRODEMA WOOD GRAIN PANELS
- ⑥ CONTINUOUS LED STRIP LIGHTING AROUND PERIMETER
- ⑦ SHOP WINDOWS, CLEAR THERMAL UNITS C/W BUTT SILICONE JOINTS
- ⑧ ALL ALUMINUM ENTRANCES AND O/H DOORS TO BE CLEAR ANODIZED FINISH, TYPICAL
- ⑨ PAINTED STEEL DOORS TO BE DARK GREY TO MATCH SIDING
- ⑩ VOLVO WOODMARK AS PER VOLVO SIGN PROGRAM
- ⑪ DEALERSHIP NAME SIGN AS PER VOLVO SIGN PROGRAM
- ⑫ SERVICE SIGN AS PER SIGN PROGRAM

**NOTES**

It is the responsibility of the appropriate contractor to check and verify all dimensions on site and report all errors and/or omissions to the Architect.  
 All contractors must comply with all pertinent codes and by-laws.  
 Do not scale drawings.  
 This drawing may not be used for construction until signed by the Architect.  
 Copyright reserved.

**LOCATION MAP**



**LEGAL DESCRIPTION**

PART OF LOTS 17 AND 18  
 REGISTERED PLAN 23  
 CITY OF OTTAWA

no.	date	revision
4	20 JUN 2023	ISSUED FOR REVIEW
3	28 JUL 2022	ISSUED FOR REVIEW
2	26 MAY 2022	ISSUED FOR REVIEW
1	12 OCT 2021	ISSUED FOR REVIEW

no.	date	revision

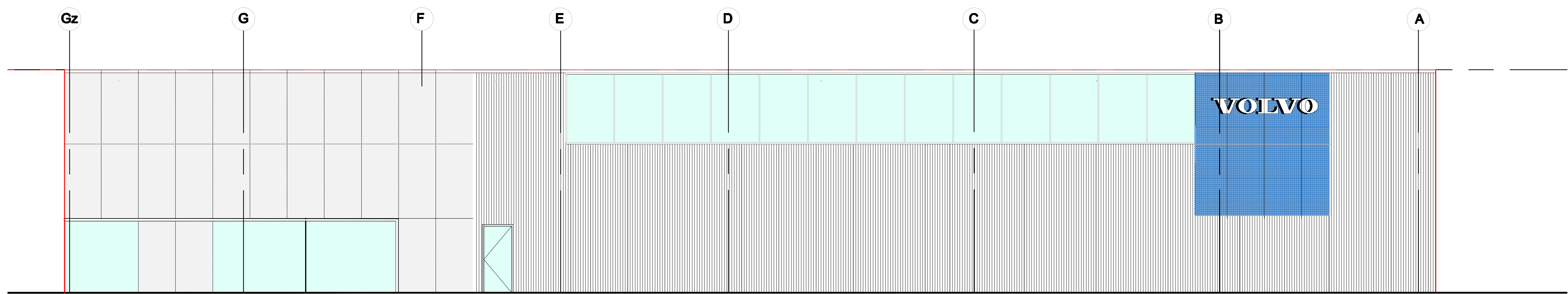
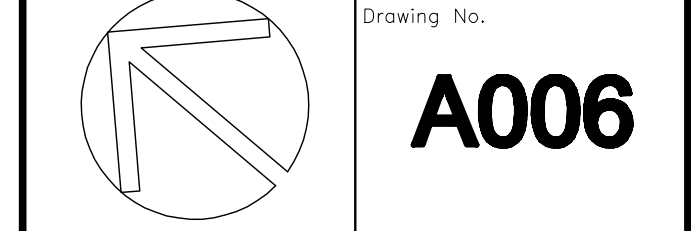
**brian k. clark**  
**ARCHITECT**  
 141 Catherine Street, Suite 102  
 Ottawa, Ontario K2P 1C3  
 TEL: (613) 238-7412 · FAX: 238-1799  
 Email: bkclarkarchitect@on.albn.com

Project:  
**VOLVO ST. LAURENT**  
**1300 MICHAEL STREET**  
**OTTAWA, ONTARIO**

OTTAWA, ONTARIO  
 Drawing:

**SOUTH ELEVATION**

Project No. <b>1811</b>	Drawn By: <b>DC</b>	Scale: <b>1 : 75</b>
North Arrow:	Date: <b>12-OCT-2021</b>	Drawing No.:



**SOUTH ELEVATION (PARISIEN)**

*Lucy Ramirez*  
**LUCY RAMIREZ**  
 PLANNER  
 PLANNING, INFRASTRUCTURE & ECONOMIC  
 DEVELOPMENT DEPARTMENT, CITY OF OTTAWA

**APPROVED**  
 By Lucy Ramirez at 12:55 pm, Feb 22, 2024

**1 SOUTH ELEVATION**  
 A005 SCALE: 1:75