



		(VP→E)			
					-
					_____
					_____
					-

Con't

		(VP→E)			
					-
					-

---

---

of Ontario's Endangered Species Act (2007) and so is protected from harm.

---

---

As per the City of Ottawa's tree protection barrier specification

reader's attention is directed.

A handwritten signature in blue ink that reads "Andrew Boyd". The signature is written in a cursive style with a horizontal line underneath the name.







---

---

---





revise the recommendations within this report. Recognition of changes to a tree's condition requires

---

to be on the client's property. A recent survey prepared by a Licensed Ontario Land Surveyor showing

---

---

the applicant, whether with or without negligence on the part of the applicant, or the applicant's

---



RUE MICHAEL ST

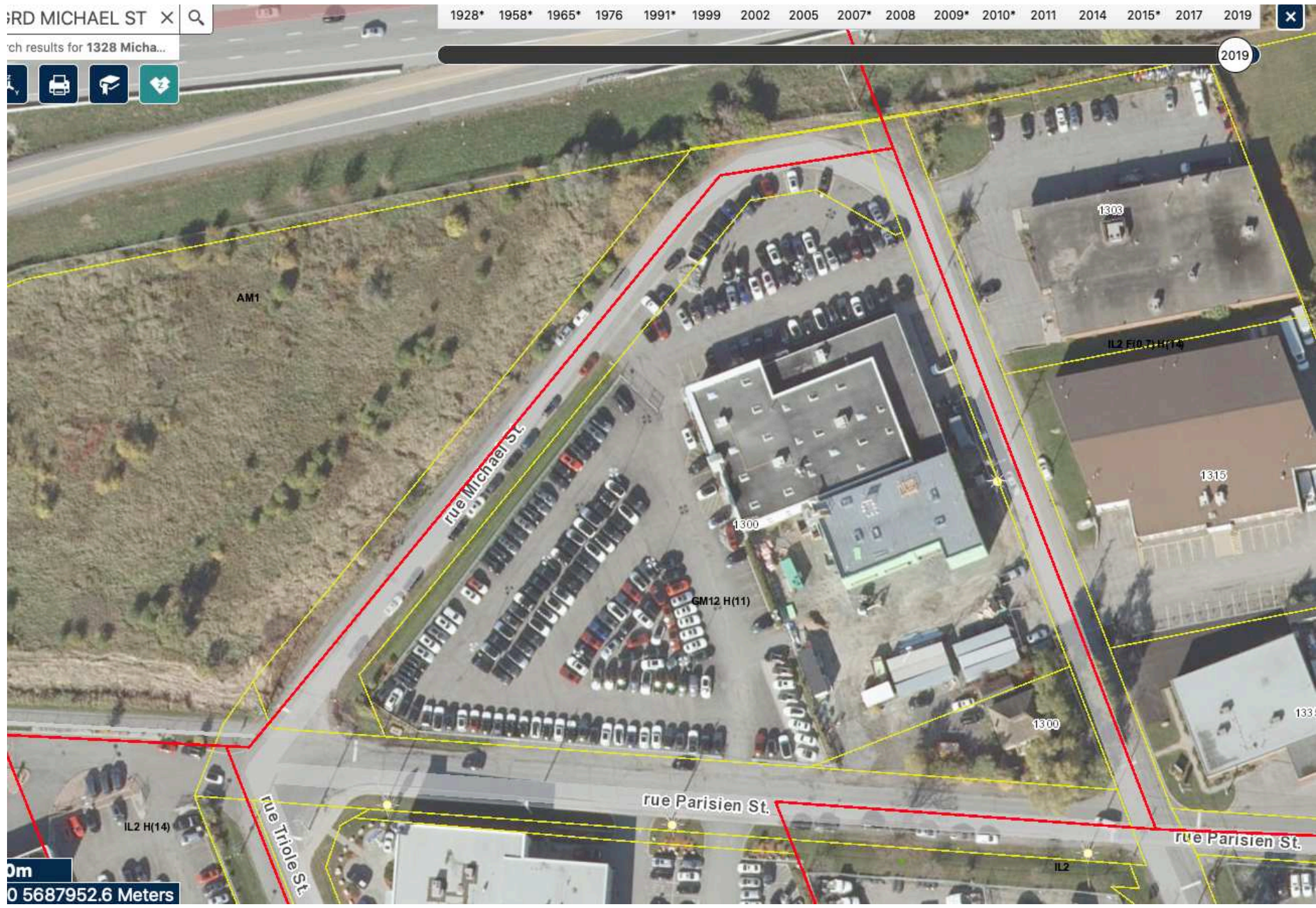


Search results for 1328 Micha...



1928\* 1958\* 1965\* 1976 1991\* 1999 2002 2005 2007\* 2008 2009\* 2010\* 2011 2014 2015\* 2017 2019

2019



AM1

rue Michael St

rue Parisien St.

rue Triole St

rue Parisien St.

1300

1303

1315

1331

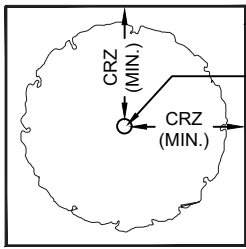
1300

GM12 H(11)

IL2 H(14)

IL2

0m  
0 5687952.6 Meters



PLAN VIEW

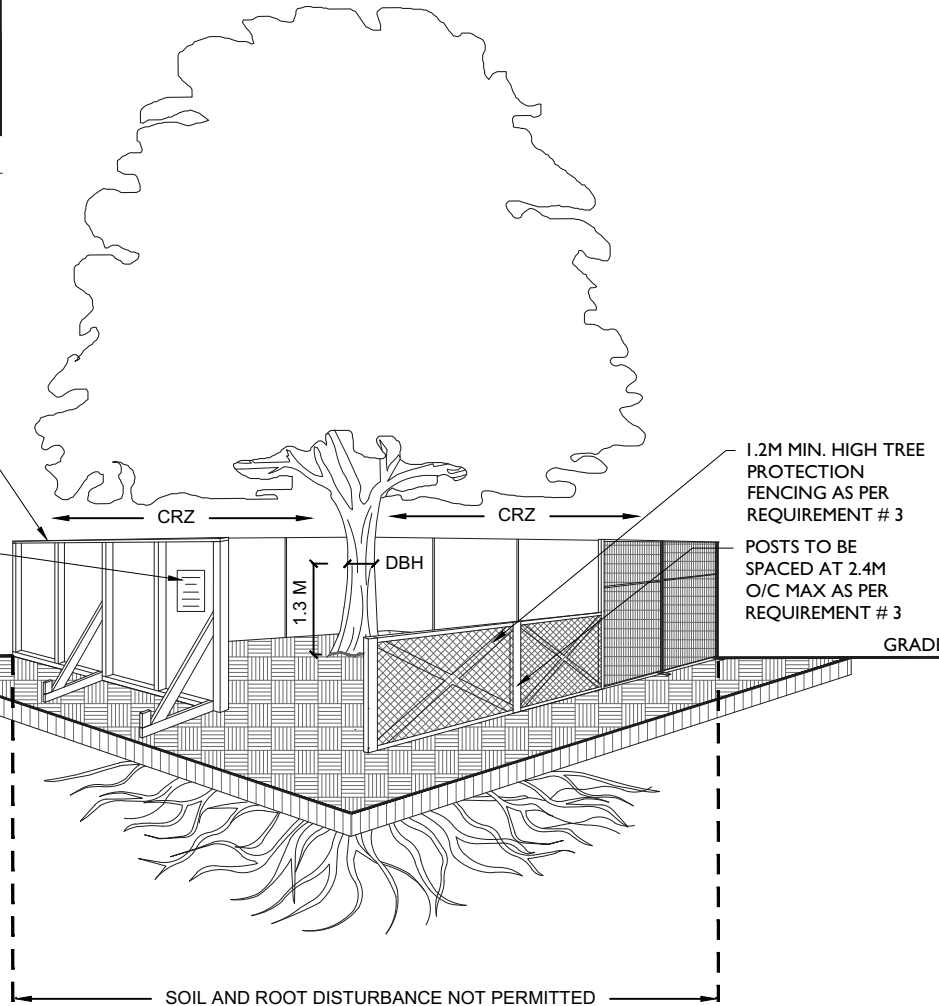
TREE PROTECTION FENCING

TREE TRUNK

CRZ = DBH X 10CM.  
CRZ IS TO BE MEASURED FROM THE OUTSIDE EDGE OF THE TREE BASE

TREE PROTECTION SIGNAGE AS PER CITY STANDARD

GRADE



1.2M MIN. HIGH TREE PROTECTION FENCING AS PER REQUIREMENT # 3

POSTS TO BE SPACED AT 2.4M O/C MAX AS PER REQUIREMENT # 3

SOIL AND ROOT DISTURBANCE NOT PERMITTED

**TREE PROTECTION REQUIREMENTS:**

1. PRIOR TO ANY WORK ACTIVITY WITHIN THE CRITICAL ROOT ZONE (CRZ = 10 X DIAMETER) OF A TREE, TREE PROTECTION FENCING MUST BE INSTALLED SURROUNDING THE CRITICAL ROOT ZONE, AND REMAIN IN PLACE UNTIL THE WORK IS COMPLETE.
2. UNLESS PLANS ARE APPROVED BY CITY FORESTRY STAFF, FOR WORK WITHIN THE CRZ:
  - DO NOT PLACE ANY MATERIAL OR EQUIPMENT - INCLUDING OUTHOUSES;
  - DO NOT ATTACH ANY SIGNS, NOTICES OR POSTERS TO ANY TREE;
  - DO NOT RAISE OR LOWER THE EXISTING GRADE;
  - TUNNEL OR BORE WHEN DIGGING;
  - DO NOT DAMAGE THE ROOT SYSTEM, TRUNK, OR BRANCHES OR ANY TREE;
  - ENSURE THAT EXHAUST FUMES FROM ALL EQUIPMENT ARE NOT DIRECTED TOWARD ANY TREE CANOPY.
  - DO NOT EXTEND HARD SURFACE OR SIGNIFICANTLY CHANGE LANDSCAPING
3. TREE PROTECTION FENCING MUST BE AT LEAST 1.2M IN HEIGHT, AND CONSTRUCTED OF RIGID OR FRAMED MATERIALS (E.G. MODULOC - STEEL, PLYWOOD HOARDING, OR SNOW FENCE ON A 2"X4" WOOD FRAME) WITH POSTS 2.4M APART, SUCH THAT THE FENCE LOCATION CANNOT BE ALTERED. ALL SUPPORTS AND BRACING MUST BE PLACED OUTSIDE OF THE CRZ, AND INSTALLATION MUST MINIMISE DAMAGE TO EXISTING ROOTS. (SEE DETAIL)
4. THE LOCATION OF THE TREE PROTECTION FENCING MUST BE DETERMINED BY AN ARBORIST AND DETAILED ON ANY ASSOCIATED PLANS FOR THE SITE ( E.G. TREE CONSERVATION REPORT, TREE DISCLOSURE REPORT, ETC). THE PLAN AND CONSTRUCTED FENCING MUST BE APPROVED BY CITY FORESTRY STAFF PRIOR TO THE COMMENCEMENT OF WORK.
5. IF THE FENCED TREE PROTECTION AREA MUST BE REDUCED TO FACILITATE CONSTRUCTION, MITIGATION MEASURES MUST BE PRESCRIBED BY AN ARBORIST AND APPROVED BY CITY FORESTRY STAFF. THESE MAY INCLUDE THE PLACEMENT OF PLYWOOD, WOOD CHIPS, OR STEEL PLATING OVER THE ROOTS FOR PROTECTION OR THE PROPER PRUNING AND CARE OF ROOTS WHERE ENCOUNTERED.

**BY-LAWS**

ALL CITY-OWNED TREES ARE PROTECTED UNDER THE MUNICIPAL TREES AND NATURAL AREAS PROTECTION BY-LAW (2006-279). WITHIN THE URBAN AREA, PRIVATELY-OWNED TREES GREATER THAN 50CM DIAMETER ON LOTS 1HA IN SIZE OR LESS, AND TREES GREATER THAN 10CM DIAMETER ON LOTS >1HA, ARE PROTECTED UNDER THE URBAN TREE CONSERVATION BY-LAW (2009-200).

ACCESSIBLE FORMATS AND COMMUNICATION SUPPORTS ARE AVAILABLE, UPON REQUEST



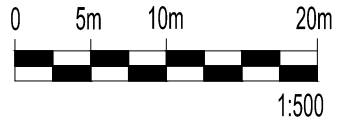
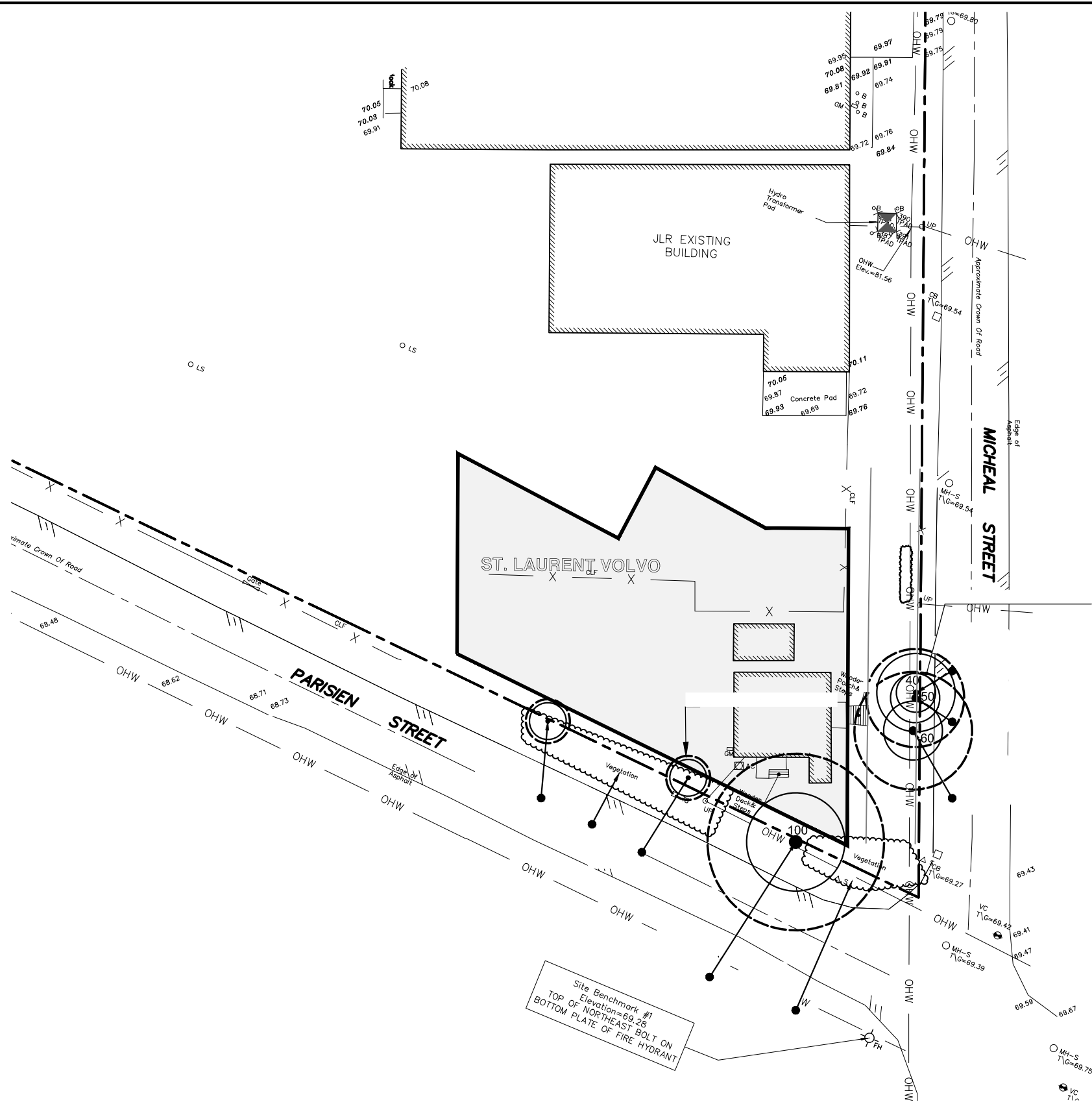
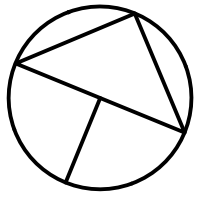
**TREE PROTECTION SPECIFICATION**

TO BE IMPLEMENTED FOR RETAINED TREES, BOTH ON SITE AND ON ADJACENT SITES, PRIOR TO ANY TREE REMOVAL OR SITE WORKS AND MAINTAINED FOR THE DURATION OF WORK ACTIVITIES ON SITE.

SCALE: NTS

DATE: MAY 2019

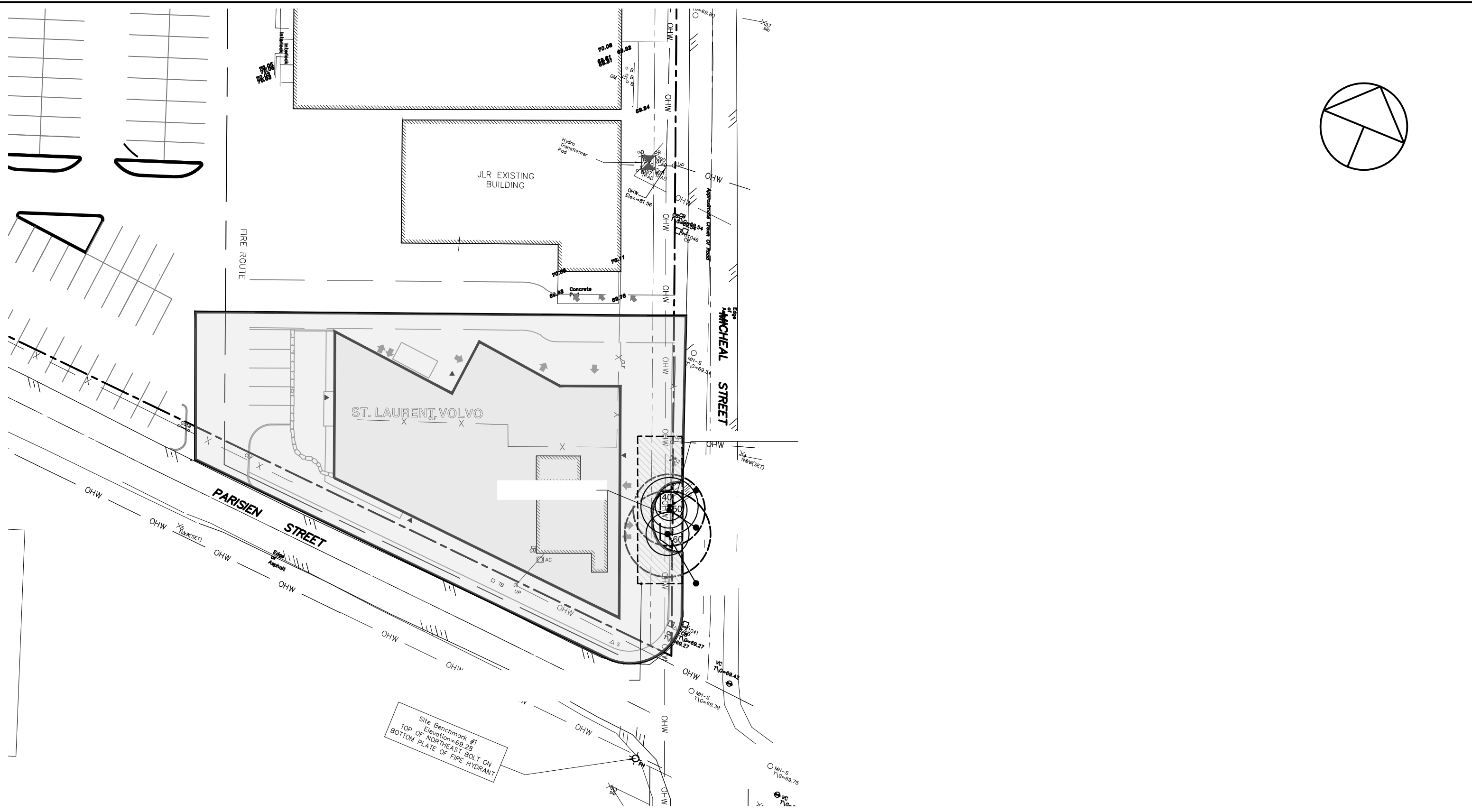
DRAWING NO.: 1 of 1



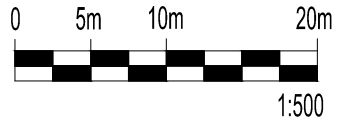
Ruhland & Associates Ltd

200-1750 Courtwood Crescent, Ottawa, Ontario K2C 2B5  
P (613) 224-4744 x 222 F (613) 224-1131 info@rala.ca www.rala.ca



Site Benchmark #1  
 Elevation=69.28  
 TOP OF NORTHEAST BOLT ON  
 BOTTOM PLATE OF FIRE HYDRANT



Ruhland & Associates Ltd

200-1750 Courtwood Crescent, Ottawa, Ontario K2C 2B5  
 P (613) 224-4744 x 222 F (613) 224-1131 info@rala.ca www.rala.ca