

DRAWING NOTES

- ① BLUE TINTED THERMAL UNITS
- ② SOLERA CURTAINWALL SYSTEM C/W SEMI OPAQUE THERMAL UNITS
- ③ ACM PANELS, SILVER METALLIC FINISH, TYPICAL
- ④ PREFINISHED RIBBED METAL SIDING, DARK GREY
- ⑤ SHOWROOM ENTRANCE AND VESTIBULE, PRODEMA WOOD GRAIN PANELS
- ⑥ CONTINUOUS LED STRIP LIGHTING AROUND PERIMETER
- ⑦ SHOP WINDOWS, CLEAR THERMAL UNITS C/W BUTT SILICONE JOINTS
- ⑧ ALL ALUMINUM ENTRANCES AND O/H DOORS TO BE CLEAR ANODIZED FINISH, TYPICAL
- ⑨ PAINTED STEEL DOORS TO BE DARK GREY TO MATCH SIDING
- ⑩ VOLVO WOODMARK AS PER VOLVO SIGN PROGRAM
- ⑪ DEALERSHIP NAME SIGN AS PER VOLVO SIGN PROGRAM
- ⑫ SERVICE SIGN AS PER SIGN PROGRAM

NOTES

It is the responsibility of the appropriate contractor to check and verify all dimensions on site and report all errors and/or omissions to the Architect.
 All contractors must comply with all pertinent codes and by-laws.
 Do not scale drawings.
 This drawing may not be used for construction until signed by the Architect.
 Copyright reserved.

LOCATION MAP



LEGAL DESCRIPTION

PART OF LOTS 17 AND 18
 REGISTERED PLAN 23
 CITY OF OTTAWA

| no. | date | revision |
|-----|--------------|-------------------|
| 4 | 20 JUL 2023 | ISSUED FOR REVIEW |
| 3 | 26 JUL 2022 | ISSUED FOR REVIEW |
| 2 | 26 MAY 2022 | ISSUED FOR REVIEW |
| 1 | 12 OCT. 2021 | ISSUED FOR REVIEW |

| no. | date | revision |
|-----|------|----------|
| | | |

brian k. clark
 ARCHITECT
 141 Catherine Street, Suite 102
 Ottawa, Ontario K2P 1C3
 TEL: (613) 238-7412 · FAX: 238-1799
 Email: bkclarkarchitect@on.albn.com

Project:
VOLVO ST. LAURENT
1300 MICHAEL STREET
OTTAWA, ONTARIO

OTTAWA, ONTARIO
 Drawing:

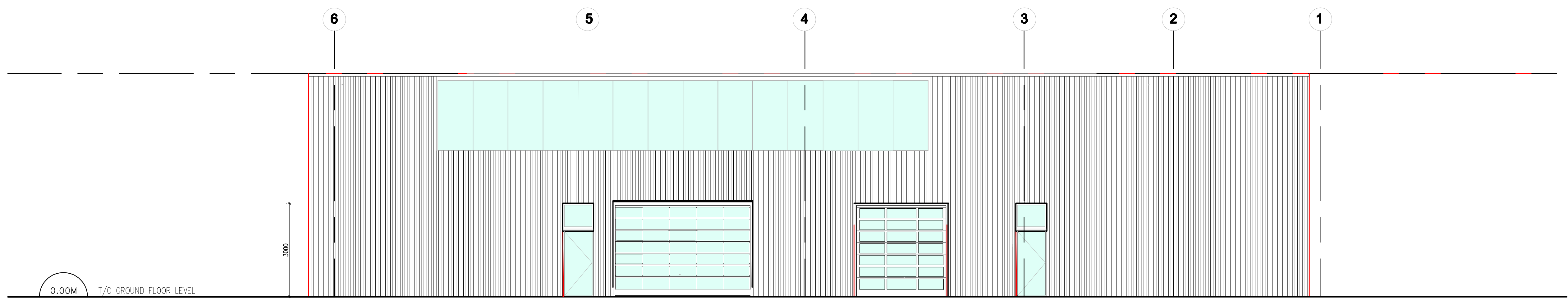
EAST ELEVATION

Project No: **1811** Drawn By: **DC** Scale: **1 : 75**
 Date: **12-OCT-2021**

North Arrow:

A007

EAST ELEVATION (MICHAEL ST.)



Lucy Ramirez
LUCY RAMIREZ
 PLANNER
 PLANNING, INFRASTRUCTURE & ECONOMIC
 DEVELOPMENT DEPARTMENT, CITY OF OTTAWA

APPROVED
 By Lucy Ramirez at 12:52 pm, Feb 22, 2024

1 EAST ELEVATION
 A007 SCALE: 1:75

D007-12-22-0012