
this report is related to trees protected under the City of Ottawa's Tree Protection By

documented in a TCR. A "tree" is defined in the By

by the City's

-

		(VP→E)			
					-

					-

Con't

		(VP→E)			
					-
					-

of Ontario's Endangered Species Act (2007) and so is protected from harm.

reader's attention is directed.







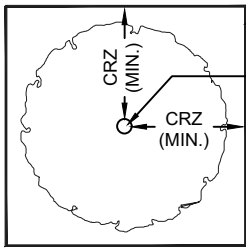


e the recommendations within this report. Recognition of changes to a tree's condition requires

to be on the client's property. A recent survey prepared by a Licensed Ontar

nt's

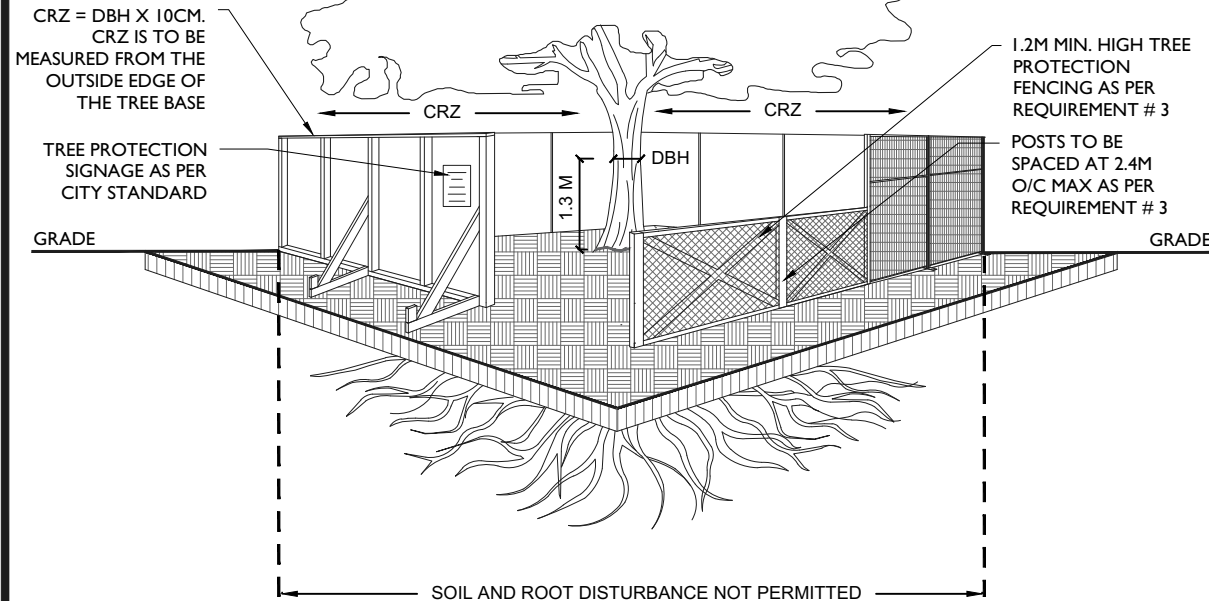




PLAN VIEW

TREE PROTECTION FENCING

TREE TRUNK



TREE PROTECTION REQUIREMENTS:

1. PRIOR TO ANY WORK ACTIVITY WITHIN THE CRITICAL ROOT ZONE (CRZ = 10 X DIAMETER) OF A TREE, TREE PROTECTION FENCING MUST BE INSTALLED SURROUNDING THE CRITICAL ROOT ZONE, AND REMAIN IN PLACE UNTIL THE WORK IS COMPLETE.
2. UNLESS PLANS ARE APPROVED BY CITY FORESTRY STAFF, FOR WORK WITHIN THE CRZ:
 - DO NOT PLACE ANY MATERIAL OR EQUIPMENT - INCLUDING OUTHOUSES;
 - DO NOT ATTACH ANY SIGNS, NOTICES OR POSTERS TO ANY TREE;
 - DO NOT RAISE OR LOWER THE EXISTING GRADE;
 - TUNNEL OR BORE WHEN DIGGING;
 - DO NOT DAMAGE THE ROOT SYSTEM, TRUNK, OR BRANCHES OR ANY TREE;
 - ENSURE THAT EXHAUST FUMES FROM ALL EQUIPMENT ARE NOT DIRECTED TOWARD ANY TREE CANOPY.
 - DO NOT EXTEND HARD SURFACE OR SIGNIFICANTLY CHANGE LANDSCAPING
3. TREE PROTECTION FENCING MUST BE AT LEAST 1.2M IN HEIGHT, AND CONSTRUCTED OF RIGID OR FRAMED MATERIALS (E.G. MODULOC - STEEL, PLYWOOD HOARDING, OR SNOW FENCE ON A 2"X4" WOOD FRAME) WITH POSTS 2.4M APART, SUCH THAT THE FENCE LOCATION CANNOT BE ALTERED. ALL SUPPORTS AND BRACING MUST BE PLACED OUTSIDE OF THE CRZ, AND INSTALLATION MUST MINIMISE DAMAGE TO EXISTING ROOTS. (SEE DETAIL)
4. THE LOCATION OF THE TREE PROTECTION FENCING MUST BE DETERMINED BY AN ARBORIST AND DETAILED ON ANY ASSOCIATED PLANS FOR THE SITE (E.G. TREE CONSERVATION REPORT, TREE DISCLOSURE REPORT, ETC). THE PLAN AND CONSTRUCTED FENCING MUST BE APPROVED BY CITY FORESTRY STAFF PRIOR TO THE COMMENCEMENT OF WORK.
5. IF THE FENCED TREE PROTECTION AREA MUST BE REDUCED TO FACILITATE CONSTRUCTION, MITIGATION MEASURES MUST BE PRESCRIBED BY AN ARBORIST AND APPROVED BY CITY FORESTRY STAFF. THESE MAY INCLUDE THE PLACEMENT OF PLYWOOD, WOOD CHIPS, OR STEEL PLATING OVER THE ROOTS FOR PROTECTION OR THE PROPER PRUNING AND CARE OF ROOTS WHERE ENCOUNTERED.

BY-LAWS

ALL CITY-OWNED TREES ARE PROTECTED UNDER THE MUNICIPAL TREES AND NATURAL AREAS PROTECTION BY-LAW (2006-279). WITHIN THE URBAN AREA, PRIVATELY-OWNED TREES GREATER THAN 50CM DIAMETER ON LOTS 1HA IN SIZE OR LESS, AND TREES GREATER THAN 10CM DIAMETER ON LOTS >1HA, ARE PROTECTED UNDER THE URBAN TREE CONSERVATION BY-LAW (2009-200).

ACCESSIBLE FORMATS AND COMMUNICATION SUPPORTS ARE AVAILABLE, UPON REQUEST



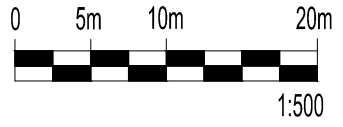
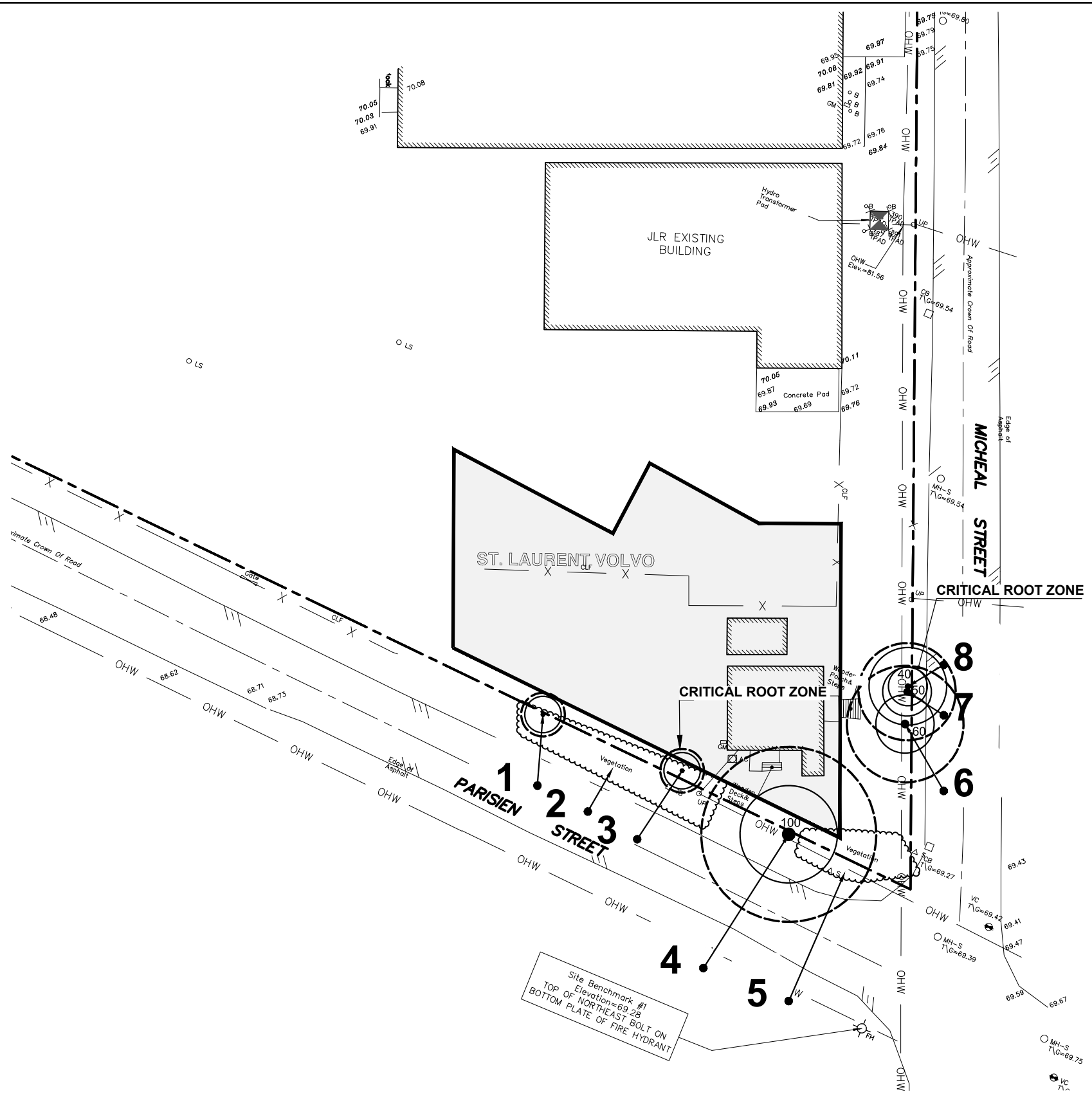
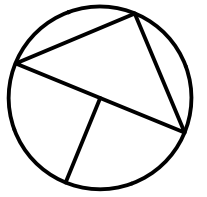
TREE PROTECTION SPECIFICATION

TO BE IMPLEMENTED FOR RETAINED TREES, BOTH ON SITE AND ON ADJACENT SITES, PRIOR TO ANY TREE REMOVAL OR SITE WORKS AND MAINTAINED FOR THE DURATION OF WORK ACTIVITIES ON SITE.

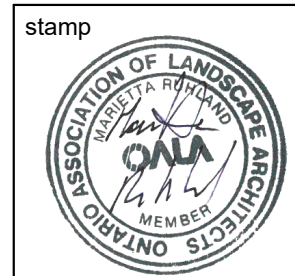
SCALE: NTS

DATE: MAY 2019

DRAWING NO.: 1 of 1



REFER TO CHART FOR TREE ID, CONDITION, ACTION

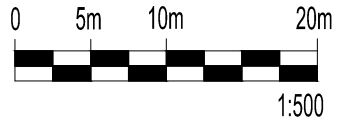
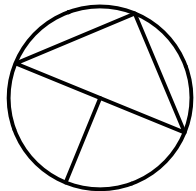
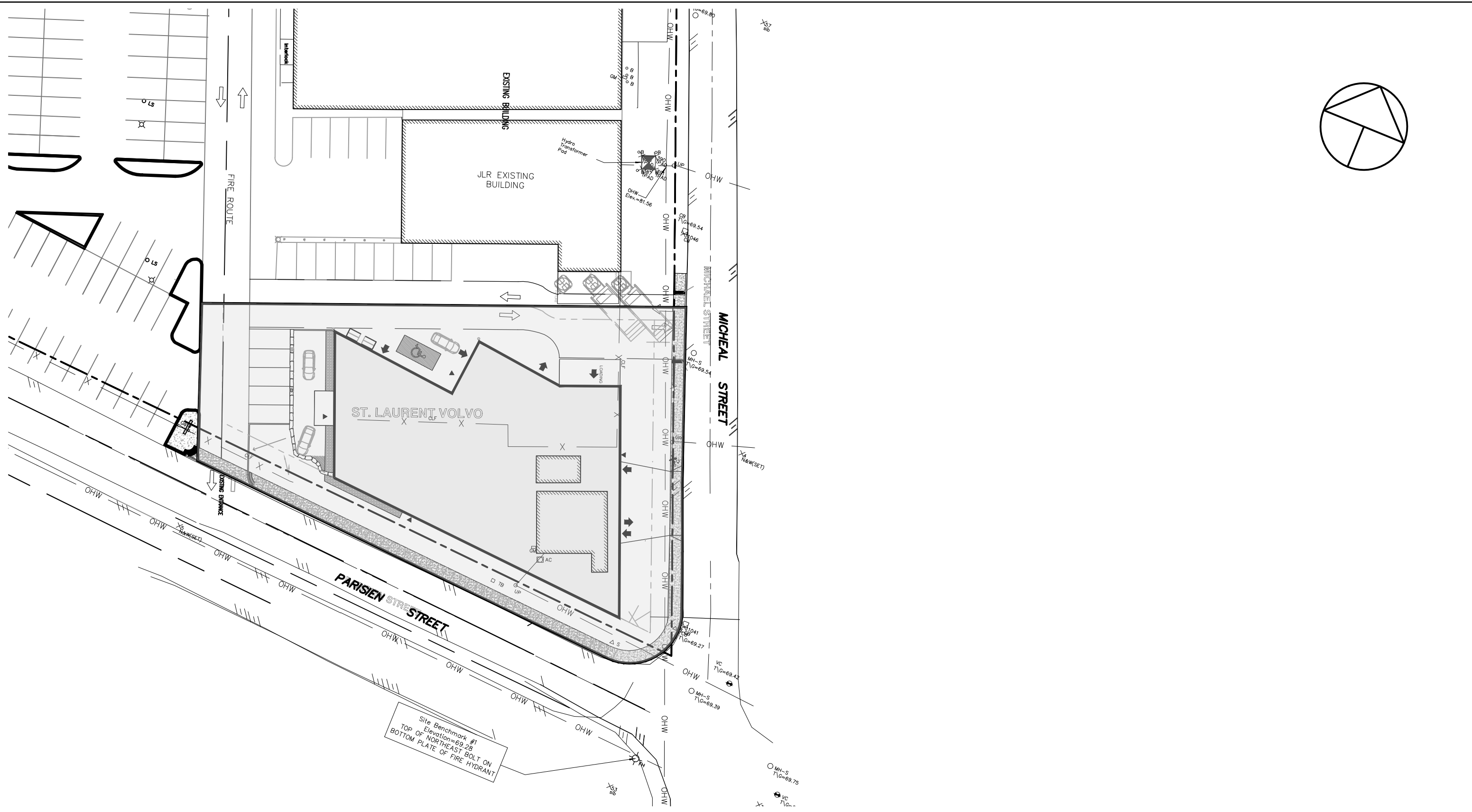


project **VOLVO SAINT LAURENT ADDITION**

Ruhland & Associates Ltd
 200-1750 Courtwood Crescent, Ottawa, Ontario K2C 2B5
 P (613) 224-4744 x 222 F (613) 224-1131 info@rala.ca www.rala.ca



drawing MAP # 1 - CURRENT VEGETATION		scale 1:500	date January, 2022	project no. 21-1635	dwg. no. MAP #1
drawn by M.Malkov	checked by M.Ruhland	revision no.			



stamp 	project <h2 style="text-align: center;">VOLVO SAINT LAURENT ADDITION</h2>			drawing <h3 style="text-align: center;">MAP # 2 - PROPOSED DEVELOPMENT</h3>			
	 200-1750 Courtwood Crescent, Ottawa, Ontario K2C 2B5 P (613) 224-4744 x 222 F (613) 224-1131 info@rala.ca www.rala.ca				scale 1:500	date January, 2022	project no. 21-1635
	drawn by M.Malkov	checked by M.Ruhland	revision no. 				