

DRAWING NOTES

- ① BLUE TINTED THERMAL UNITS
- ② SOLERA CURTAINWALL SYSTEM C/W SEMI OPAQUE THERMAL UNITS
- ③ ACM PANELS, SILVER METALLIC FINISH, TYPICAL
- ④ PREFINISHED RIBBED METAL SIDING, DARK GREY
- ⑤ SHOWROOM ENTRANCE AND VESTIBULE, PRODEMA WOOD GRAIN PANELS
- ⑥ CONTINUOUS LED STRIP LIGHTING AROUND PERIMETER
- ⑦ SHOP WINDOWS, CLEAR THERMAL UNITS C/W BUTT SILICONE JOINTS
- ⑧ ALL ALUMINUM ENTRANCES AND O/H DOORS TO BE CLEAR ANODIZED FINISH, TYPICAL
- ⑨ PAINTED STEEL DOORS TO BE DARK GREY TO MATCH SIDING
- ⑩ VOLVO WOODMARK AS PER VOLVO SIGN PROGRAM
- ⑪ DEALERSHIP NAME SIGN AS PER VOLVO SIGN PROGRAM
- ⑫ SERVICE SIGN AS PER SIGN PROGRAM

NOTES

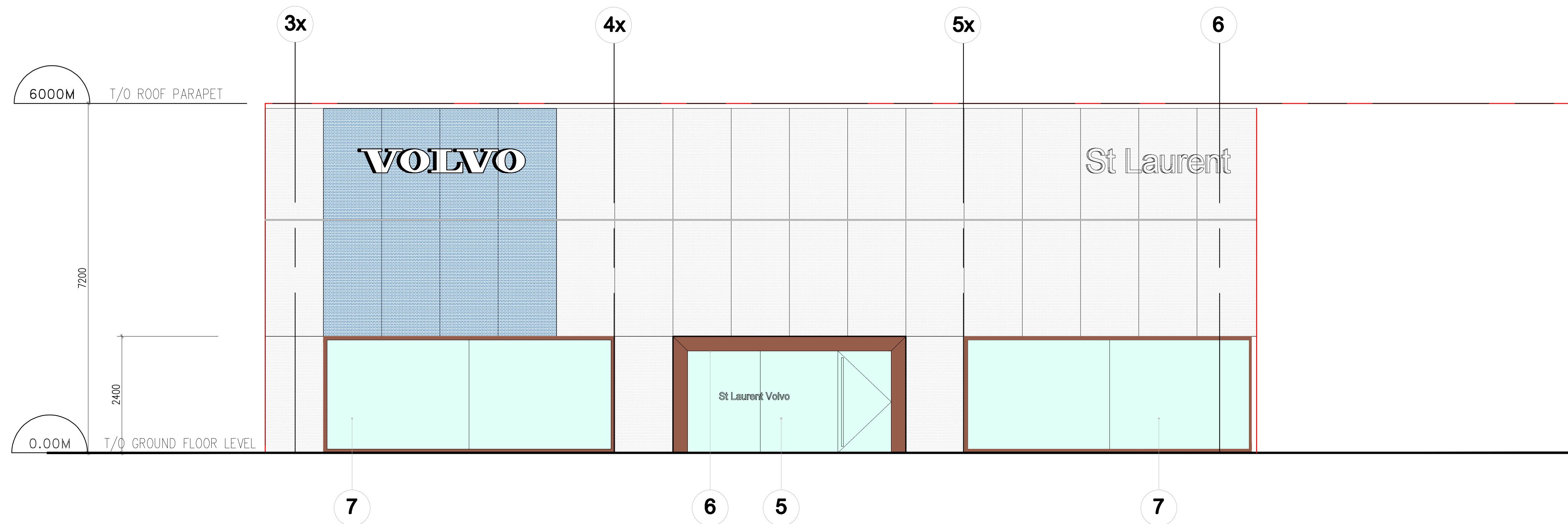
It is the responsibility of the appropriate contractor to check and verify all dimensions on site and report all errors and or omissions to the Architect.
 All contractors must comply with all pertinent codes and by-laws.
 Do not scale drawings.
 This drawing may not be used for construction until signed by the Architect.
 Copyright reserved.

LOCATION MAP



LEGAL DESCRIPTION

PART OF LOTS 17 AND 18
 REGISTERED PLAN 23
 CITY OF OTTAWA



WEST ELEVATION (ST. LAURENT)

1 WEST ELEVATION
 A005 SCALE: 1:50

no.	date	revision
4	20 JUN 2023	ISSUED FOR REVIEW
3	28 JUL 2022	ISSUED FOR REVIEW
2	26 MAY 2022	ISSUED FOR REVIEW
1	12 OCT 2021	ISSUED FOR REVIEW

no.	date	revision	Stamp:

brian k. clark
ARCHITECT
 141 Catherine Street, Suite 102
 Ottawa, Ontario K2P 1C3
 TEL: (613) 238-7412 · FAX: 238-1799
 Email: bkclarkarchitect@on.albn.com

Project:
VOLVO ST. LAURENT
1300 MICHAEL STREET
OTTAWA, ONTARIO

OTTAWA, ONTARIO
 Drawing:

WEST ELEVATION

Project No: **1811** Drawn By: **DC** Scale: **1 : 50**
 Date: **12-OCT-2021**

North Arrow:

A005

D007-12-22-0012

DRAWING NOTES

- ① BLUE TINTED THERMAL UNITS
- ② SOLERA CURTAINWALL SYSTEM C/W SEMI OPAQUE THERMAL UNITS
- ③ ACM PANELS, SILVER METALLIC FINISH, TYPICAL
- ④ PREFINISHED RIBBED METAL SIDING, DARK GREY
- ⑤ SHOWROOM ENTRANCE AND VESTIBULE, PRODEMA WOOD GRAIN PANELS
- ⑥ CONTINUOUS LED STRIP LIGHTING AROUND PERIMETER
- ⑦ SHOP WINDOWS, CLEAR THERMAL UNITS C/W BUTT SILICONE JOINTS
- ⑧ ALL ALUMINUM ENTRANCES AND O/H DOORS TO BE CLEAR ANODIZED FINISH, TYPICAL
- ⑨ PAINTED STEEL DOORS TO BE DARK GREY TO MATCH SIDING
- ⑩ VOLVO WOODMARK AS PER VOLVO SIGN PROGRAM
- ⑪ DEALERSHIP NAME SIGN AS PER VOLVO SIGN PROGRAM
- ⑫ SERVICE SIGN AS PER SIGN PROGRAM

NOTES

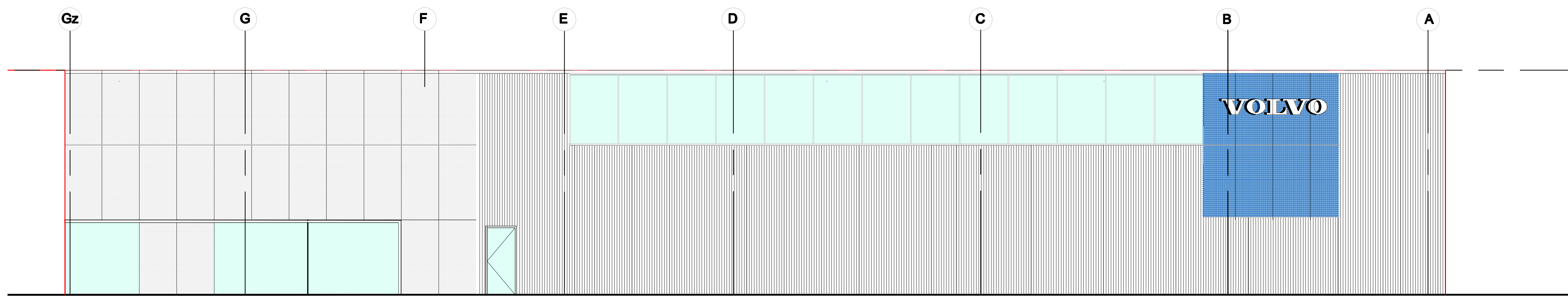
It is the responsibility of the appropriate contractor to check and verify all dimensions on site and report all errors and or omissions to the Architect.
 All contractors must comply with all pertinent codes and by-laws.
 Do not scale drawings.
 This drawing may not be used for construction until signed by the Architect.
 Copyright reserved.

LOCATION MAP



LEGAL DESCRIPTION

PART OF LOTS 17 AND 18
 REGISTERED PLAN 23
 CITY OF OTTAWA



SOUTH ELEVATION (PARISIEN)

no.	date	revision
4	20 JUN 2023	ISSUED FOR REVIEW
3	28 JUL 2022	ISSUED FOR REVIEW
2	26 MAY 2022	ISSUED FOR REVIEW
1	12 OCT 2021	ISSUED FOR REVIEW

no.	date	revision

brian k. clark
ARCHITECT
 141 Catherine Street, Suite 102
 Ottawa, Ontario K2P 1C3
 TEL: (613) 238-7412 · FAX: 238-1799
 Email: bkclarkarchitect@on.albn.com

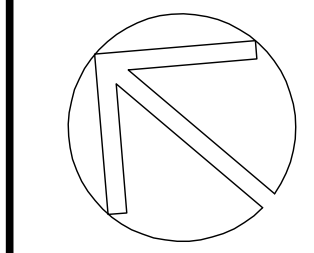
Project:
VOLVO ST. LAURENT
1300 MICHAEL STREET
OTTAWA, ONTARIO

OTTAWA, ONTARIO
 Drawing:

SOUTH ELEVATION

Project No. 1811	Drawn By: DC	Scale: 1 : 75
North Arrow:	Date: 12-OCT-2021	Drawing No. A006

1 SOUTH ELEVATION
 A005 SCALE: 1:75



DRAWING NOTES

- ① BLUE TINTED THERMAL UNITS
- ② SOLERA CURTAINWALL SYSTEM C/W SEMI OPAQUE THERMAL UNITS
- ③ ACM PANELS, SILVER METALLIC FINISH, TYPICAL
- ④ PREFINISHED RIBBED METAL SIDING, DARK GREY
- ⑤ SHOWROOM ENTRANCE AND VESTIBULE, PRODEMA WOOD GRAIN PANELS
- ⑥ CONTINUOUS LED STRIP LIGHTING AROUND PERIMETER
- ⑦ SHOP WINDOWS, CLEAR THERMAL UNITS C/W BUTT SILICONE JOINTS
- ⑧ ALL ALUMINUM ENTRANCES AND O/H DOORS TO BE CLEAR ANODIZED FINISH, TYPICAL
- ⑨ PAINTED STEEL DOORS TO BE DARK GREY TO MATCH SIDING
- ⑩ VOLVO WOODMARK AS PER VOLVO SIGN PROGRAM
- ⑪ DEALERSHIP NAME SIGN AS PER VOLVO SIGN PROGRAM
- ⑫ SERVICE SIGN AS PER SIGN PROGRAM

NOTES

It is the responsibility of the appropriate contractor to check and verify all dimensions on site and report all errors and or omissions to the Architect.
 All contractors must comply with all pertinent codes and by-laws.
 Do not scale drawings.
 This drawing may not be used for construction until signed by the Architect.
 Copyright reserved.

LOCATION MAP



LEGAL DESCRIPTION

PART OF LOTS 17 AND 18
 REGISTERED PLAN 23
 CITY OF OTTAWA

no.	date	revision
4	20 JUL 2023	ISSUED FOR REVIEW
3	26 JUL 2022	ISSUED FOR REVIEW
2	26 MAY 2022	ISSUED FOR REVIEW
1	12 OCT. 2021	ISSUED FOR REVIEW

no.	date	revision	Stamp:

brian k. clark
ARCHITECT
 141 Catherine Street, Suite 102
 Ottawa, Ontario K2P 1C3
 TEL: (613) 238-7412 · FAX: 238-1799
 Email: bkclarkarchitect@on.albn.com

Project:
VOLVO ST. LAURENT
1300 MICHAEL STREET
OTTAWA, ONTARIO

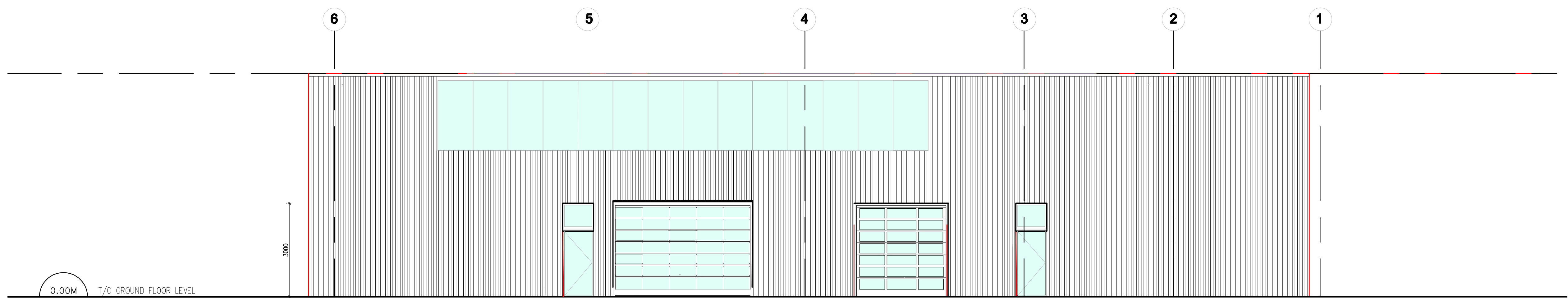
OTTAWA, ONTARIO
 Drawing:

EAST ELEVATION

Project No: **1811** Drawn By: **DC** Scale: **1 : 75**
 Date: **12-OCT-2021**

North Arrow:

A007



EAST ELEVATION (MICHAEL ST.)

1 EAST ELEVATION
A007 SCALE: 1:75

D007-12-22-0012

18651

DRAWING NOTES

- ① BLUE TINTED THERMAL UNITS
- ② SOLERA CURTAINWALL SYSTEM C/W SEMI OPAQUE THERMAL UNITS
- ③ ACM PANELS, SILVER METALLIC FINISH, TYPICAL
- ④ PREFINISHED RIBBED METAL SIDING, DARK GREY
- ⑤ SHOWROOM ENTRANCE AND VESTIBULE, PROCEMA WOOD GRAIN PANELS
- ⑥ CONTINUOUS LED STRIP LIGHTING AROUND PERIMETER
- ⑦ SHOP WINDOWS, CLEAR THERMAL UNITS C/W BUTT SILICONE JOINTS
- ⑧ ALL ALUMINUM ENTRANCES AND O/H DOORS TO BE CLEAR ANODIZED FINISH, TYPICAL
- ⑨ PAINTED STEEL DOORS TO BE DARK GREY TO MATCH SIDING
- ⑩ VOLVO WOODMARK AS PER VOLVO SIGN PROGRAM
- ⑪ DEALERSHIP NAME SIGN AS PER VOLVO SIGN PROGRAM
- ⑫ SERVICE SIGN AS PER SIGN PROGRAM

NOTES

It is the responsibility of the appropriate contractor to check and verify all dimensions on site and report all errors and or omissions to the Architect.
 All contractors must comply with all pertinent codes and by-laws.
 Do not scale drawings.
 This drawing may not be used for construction until signed by the Architect.
 Copyright reserved.

LOCATION MAP



LEGAL DESCRIPTION

PART OF LOTS 17 AND 18
 REGISTERED PLAN 23
 CITY OF OTTAWA

no.	date	revision
3	28 JUL. 2022	ISSUED FOR REVIEW
2	26 MAY 2022	ISSUED FOR REVIEW
1	12 OCT. 2021	ISSUED FOR REVIEW

no.	date	revision

brian k. clark
A·R·C·H·I·T·E·C·T
 141 Catherine Street, Suite 102
 Ottawa, Ontario K2P 1C3
 TEL: (613) 238-7412 · FAX: 238-1799
 Email: bkclarkarchitect@on.albn.com

Project:
VOLVO ST. LAURENT
1300 MICHAEL STREET
OTTAWA, ONTARIO

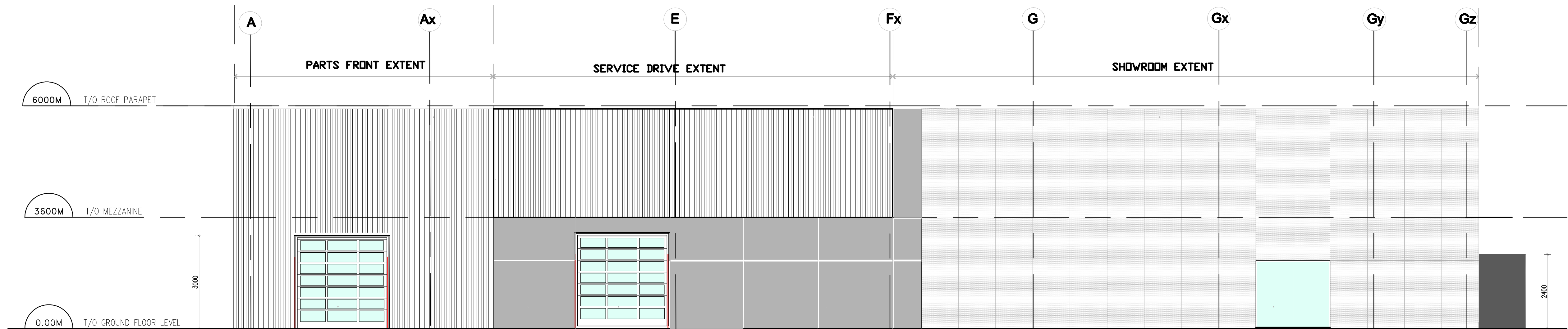
OTTAWA ONTARIO

Drawing:
NORTH ELEVATION

Project No. 1811	Drawn By: DC	Scale: 1 : 100
North Arrow:	Date: 12-OCT-2021	Drawing No.:



A008



NORTH ELEVATION (QUEENSWAY)

1 NORTH ELEVATION UNFOLDED
 A008 SCALE: 1:100