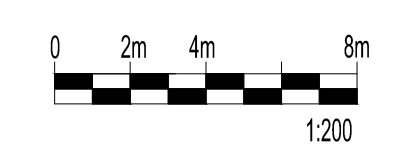
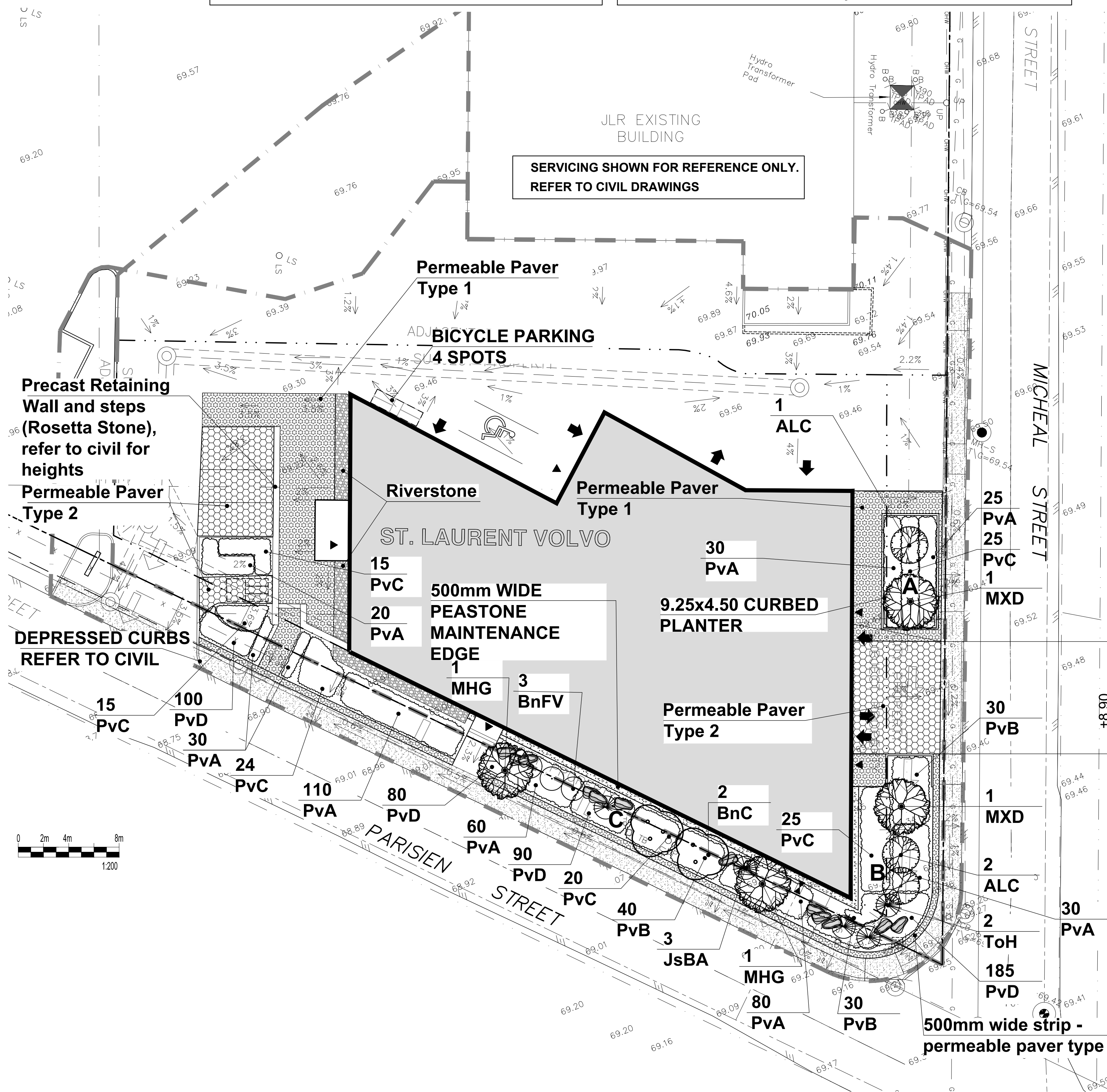


THIS PLAN IS ISSUED FOR SITE PLAN CONTROL ONLY. ADDITIONAL DETAILING AND SPECIFICATIONS ARE REQUIRED PRIOR TO TENDERING AND CONSTRUCTION.

PLAN TO BE READ IN CONJUNCTION WITH 'TREE CONSERVATION REPORT FOR 1300 MICHAEL STREET, OTTAWA' JANUARY 6, 2022 BY Andrew K. Boyd IFS ASSOCIATES.



1300 Michael				
Soil Volume Area, Tree Quantity and Size	Tree Quantity	OTTAWA Target Soil Volume (m ³)	Design Soil Volume	Soil Adequacy percentage
AREA A- 2 Ornamental trees plant bed (31.6 sq m x 0.6 metre deep)	2	18.0	19.0	105.33%
AREA B- 3 Ornamental trees, 2 columnar junipers/cedars* plant bed (65 sq m x 0.45 metre deep)	5	29.1	29.3	100.52%
AREA C - 4 Ornamental trees, 3 small ornamental trees,* 3 columnar junipers/cedars* plant bed (114 sq m x 0.45 metre deep)	10	49.7	51.3	103.32%

* Small ornamental trees with growth to 8-15cm DBH, columnar conifers calculated using 'How much soil to grow a big tree' by DeepRoot as a guide

ID	Qty	Botanical Name	Common Name	Scheduled Size	Remarks
Trees					
ALC	3	Amelanchier Laevis 'Cumulus'	Cumulus Allegheny Serviceberry	50mm cal.	WB, Staked
BnC	2	Betula nigra Clump	River Birch	50mm cal.	WB, Staked
MHG	2	Malus x 'Harvest Gold'	Harvest Gold Crabapple	50mm cal.	WB, Staked
MXD		Malus X Dreamweaver	Dreamweaver Columnar Crabapple	50mm cal.	WB, Staked
Small trees / Shrubs					
BnFV	3	Betula nigra 'Fox Valley'	Fox Valley River Birch	125cm ht.	Potted
JsBA	3	Juniperus scopulorum 'Blue Arrow'	Blue Arrow Juniper	100 cm ht.	Potted
ToH	2	Thuja occidentalis 'Holmstrup'	Holmstrup Cedar	120cm ht.	B&B / Potted
Perennials					
PvA	385	Flowering perennials		150mm Pot	50cm o.c.
PvB	100	Flowering perennials		150mm Pot	60cm o.c.
PvC	124	Ornamental Grasses		150mm Pot	70cm o.c.
PvD	460	Ground Cover Perennials		Plugs / Flats	35cm o.c.

CONTRACTOR TO REPORT ANY DISCREPANCIES FOUND BETWEEN PLAN & PLANT LIST PRIOR TO PLANTING

- Perennial types (invasive species such as Miscanthus are not to be planted)
- PvA:** Low to mid Flowering perennials up to 60cm ht (minimum 5 species mix): Cranesbill Geranium, Low Meadow Sage, Coral Bells, Dianthus, Phlox, Daylilies, Rudbeckia.
- PvB:** Tall Flowering Perennials (minimum 7 species mix): Shasta Daisy, Coneflower, Veronica, Tall Meadow and Russian Sage, Tall Phlox, Rudbeckia, Ostrich Fern, Joe Pye Weed, Turtlehead.
- PvC:** Ornamental Grasses (groupings): Feather Reed Grass, Switch Grass, Tufted Hairgrass
- PvD:** Ground Cover Perennials: varieties of Thyme, Stonecrop, low Sedum

LEGEND

- PROPOSED PLANTING
- PROPOSED PEASTONE MAINTENANCE EDGE
- PROPOSED RIVERSTONE
- PROPOSED STANDARD PAVERS
- PROPOSED PERMEABLE PAVER TYPE 1
- PROPOSED PERMEABLE PAVER TYPE 2
- A B C** SOIL VOLUME AREAS ID

FOR CONSTRUCTION

- GENERAL NOTES
- All general notes, conditions and specifications compiled from existing drawings, surveys and consultant's field notes. Report all changes and progress prior to any work. No responsibility is born by the Contractor for unknown subsurface conditions.
 - The location of the utilities is approximate only, and the exact location should be determined by consulting the municipal authorities and utility companies concerned. The Contractor shall prove the location of utilities and shall be responsible for adequate protection from damage.
 - All dimensions shown are to be verified on site prior to any construction. No deviations are to be made from the layouts as shown on this plan without prior consultation with the Landscape Architect and Owner.
 - No other trees to be removed without prior approval by Landscape Architect.

AS SHOWN

brian k. clark
ARCHITECT
141 Catherine Street, Suite 102
Ottawa, Ontario K2P 1C3
TEL: (613) 238-7412 • FAX: 238-1799
Email: bkclarkarchitect@on.aibn.com

Ruhland & Associates Ltd
200-1750 Courtwood Crescent, Ottawa, Ontario K3C 2B5
P: (613) 224-4744 x 232 F: (613) 224-6131 info@rsa.ca www.rsa.ca

PROJECT NORTH:

PROFESSIONAL STAMP:

PROFESSIONAL STAMP:

PROFESSIONAL STAMP:

PROJECT: **VOLVO ST. LAURENT
1328 MICHAEL STREET
OTTAWA, ONTARIO**

DRAWING: **LANDSCAPE PLAN**

DESIGN: M.R. DRAWING NO: **L-01**

DRAWN: M.M.

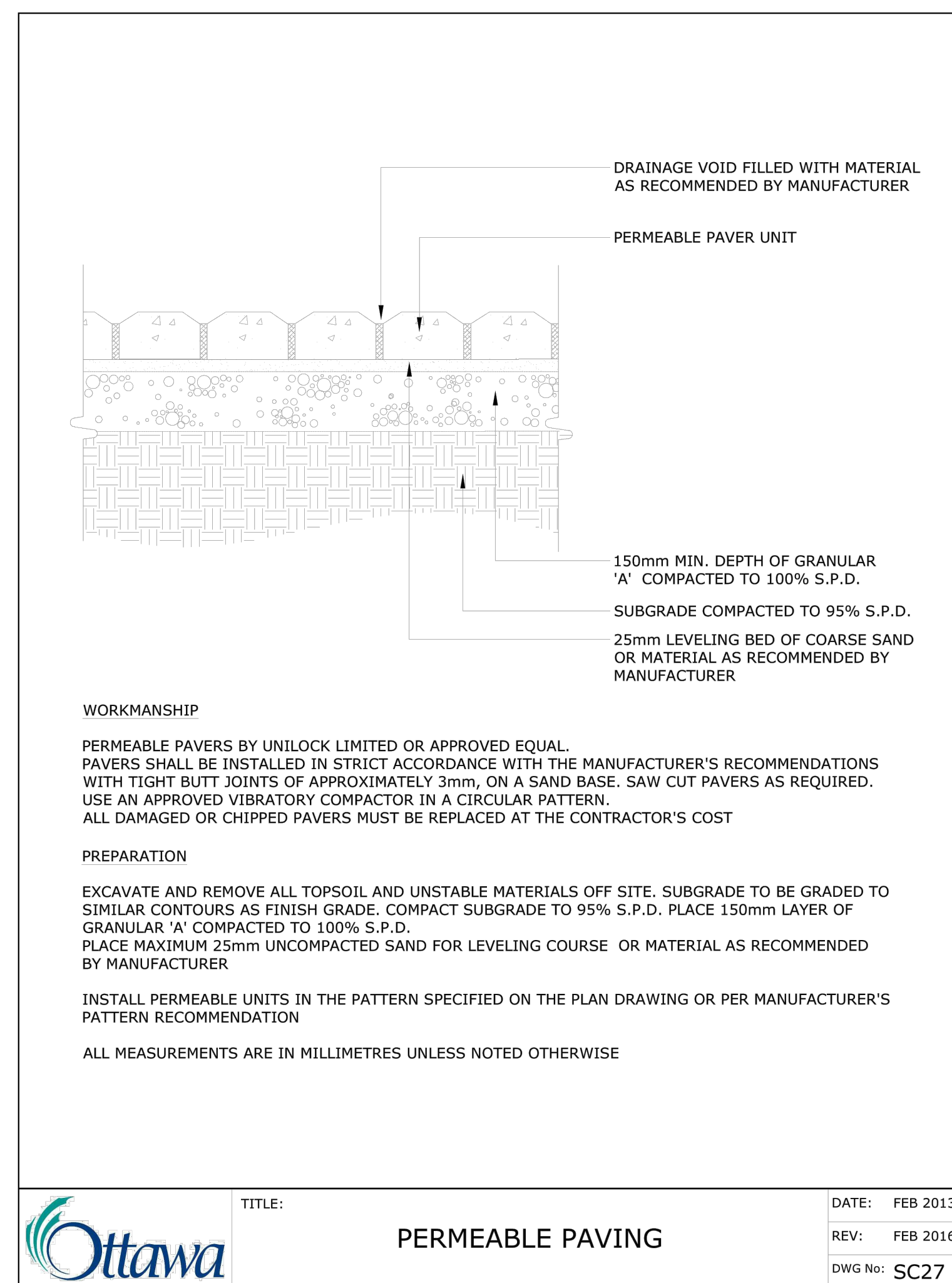
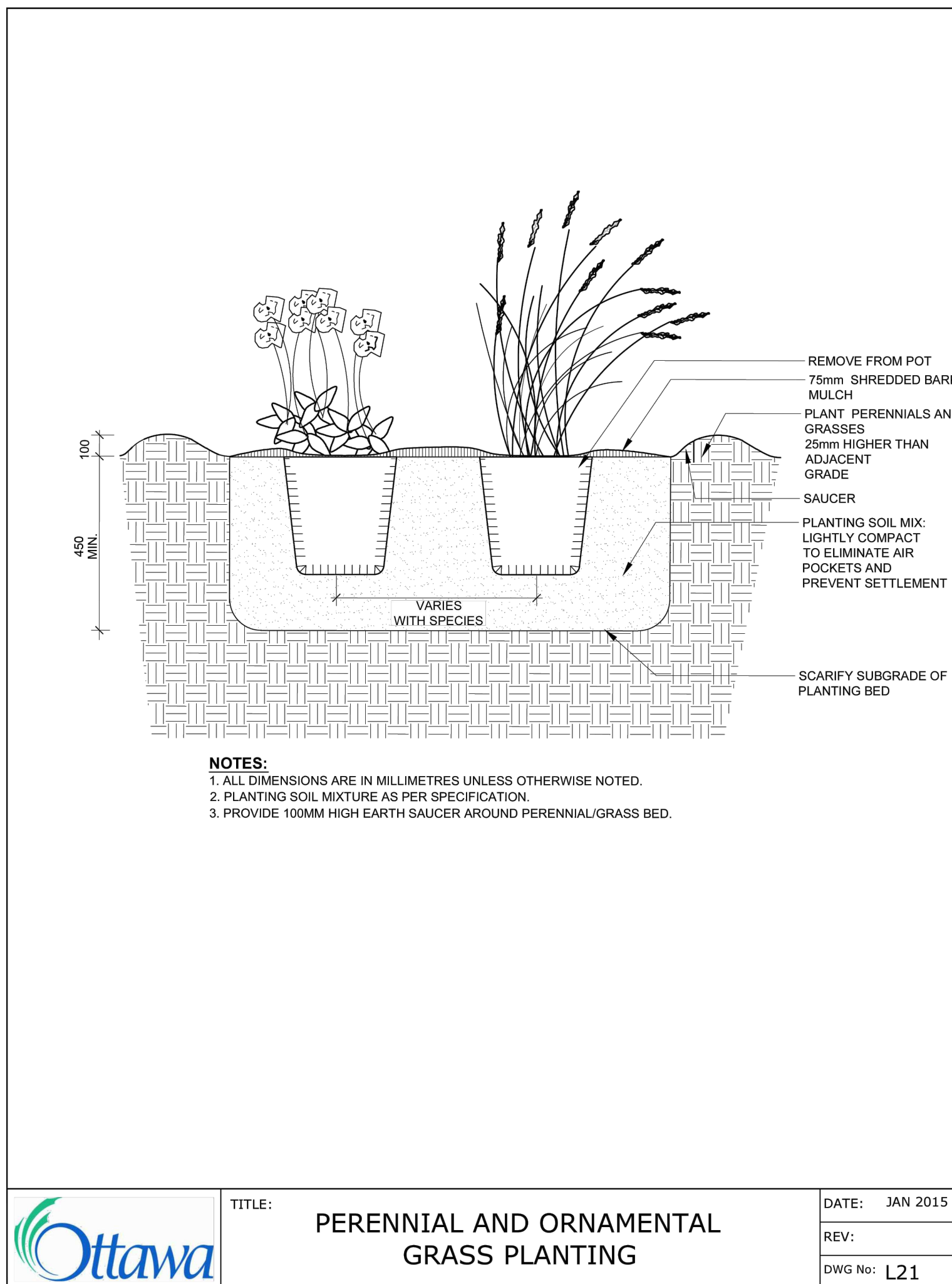
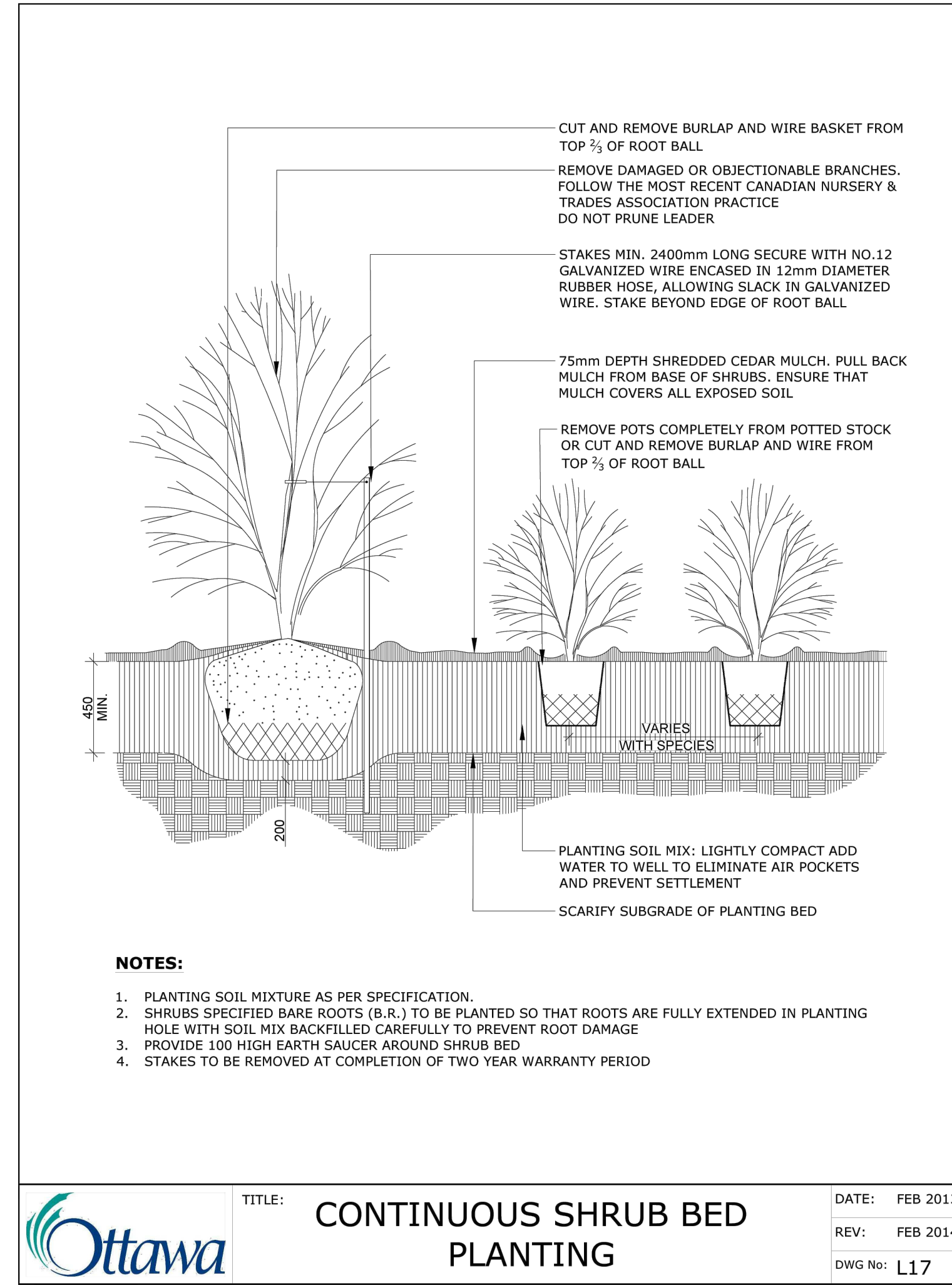
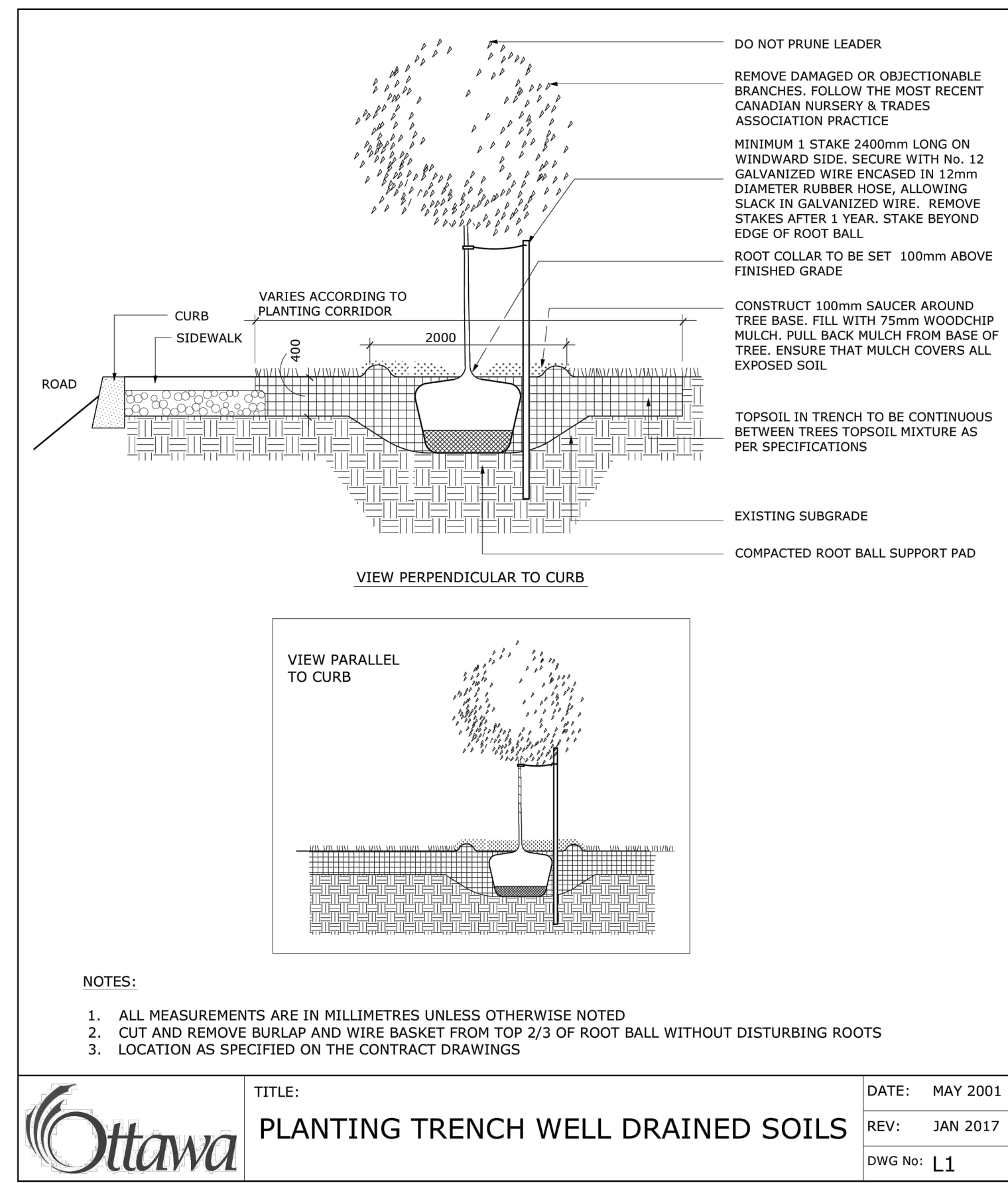
CHECKED: M.R. G-C NO:

PLOTTED:

File Location: C:\Users\Marina Makov\Documents\Projects\PCOMMERCIAL\2021\Volvo Dealership Addition\PA\LS\PC_TCR_21-1635_Volvo Saint Laurent Addition_2023.07.13.dwg Last Saved: December 13, 2021 Plotted: December 13, 2021

TREE SOIL VOLUME REQUIREMENTS:

- STANDARD TREE SOIL VOLUMES QUANTITIES INCLUDE THE TOP 900-1000mm OF SOIL/EXISTING SUBSOIL LAYER TO CALCULATE TOTAL SOIL VOLUMES REQUIRED BY CITY OF OTTAWA FOR SUSTAINABLE TREE GROWTH. WHERE LARGER SOFT AREAS ARE AVAILABLE, THE TOP 400-500mm LAYER IS USED TO CALCULATE SOIL VOLUMES.
- WHERE EXISTING MATERIAL BELOW THE SPECIFIED TOPSOIL IS NOT CONDUVIVE TO TREE GROWTH, AN ADDITIONAL LAYER OF PLANTING MEDIUM IS TO BE INSTALLED BELOW SPECIFIED TOPSOIL DEPTH TO OBTAIN 900-1000mm SOIL VOLUME DEPTH REQUIRED.
- REFER TO SOIL VOLUME CHART AND PLANS FOR AREA WHERE TREE SOIL VOLUMES ARE REQUIRED.



BASES FOR PERMEABLE PAVERS IN PEDESTRIAN AND VEHICULAR AREAS TO BE ADJUSTED TO SITE CONDITIONS AND AS PER GEOTECHNICAL RECOMMENDATIONS FOR PAVEMENT STRUCTURES AND PERMEABILITY REQUIREMENTS.

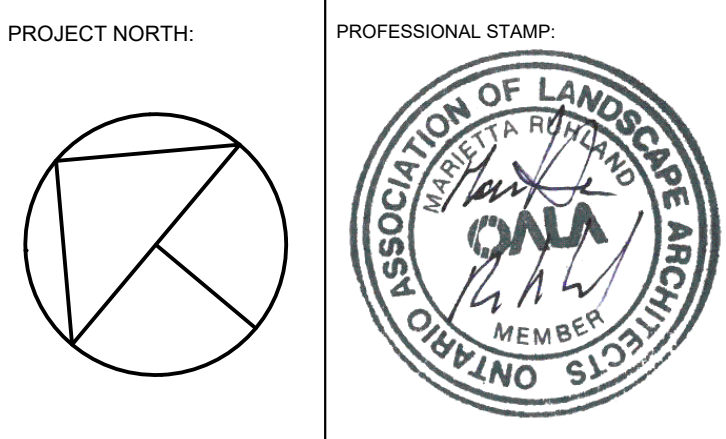
PRELIMINARY NOT FOR CONSTRUCTION

7		
6		
5		
4	Site Plan Control re-submission	Jul. 13/23
3	Site Plan Control re-submission	Dec. 20/22
2	Site Plan Control re-submission	Jul. 26/22
1	Site Plan Control submission	Jan. 12/22
No.	ISSUE	DATE

SCALE: AS SHOWN

brian k. clark
A.R.C.H.I.T.E.C.T
141 Catherine Street, Suite 102
Ottawa, Ontario K2P 1C3
TEL • (613) 238-7412 • FAX • 238-1799
Email • bkclarkarchitect@on.aibn.com

Ruhland & Associates Ltd
200-1750 Courtwood Crescent, Ottawa, Ontario K3C 2B5
P (613) 224-4744 x 232 F (613) 224-1131 info@ra.ca www.ra.ca



PROJECT NORTH: PROFESSIONAL STAMP:
PROFESSIONAL STAMP: PROFESSIONAL STAMP:

PROJECT: **VOLVO ST. LAURENT 1328 MICHAEL STREET OTTAWA, ONTARIO**

DRAWING: **LANDSCAPE DETAILS**

DESIGN:	M.R.	DRAWING NO:	L-02
DRAWN:	M.M.	G-C NO:	
CHECKED:	M.R.		
PLOTTED:			