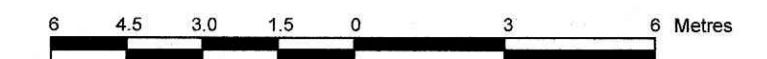


LOTS 376 AND 377 REGISTERED PLAN 403318 CITY OF OTTAWA

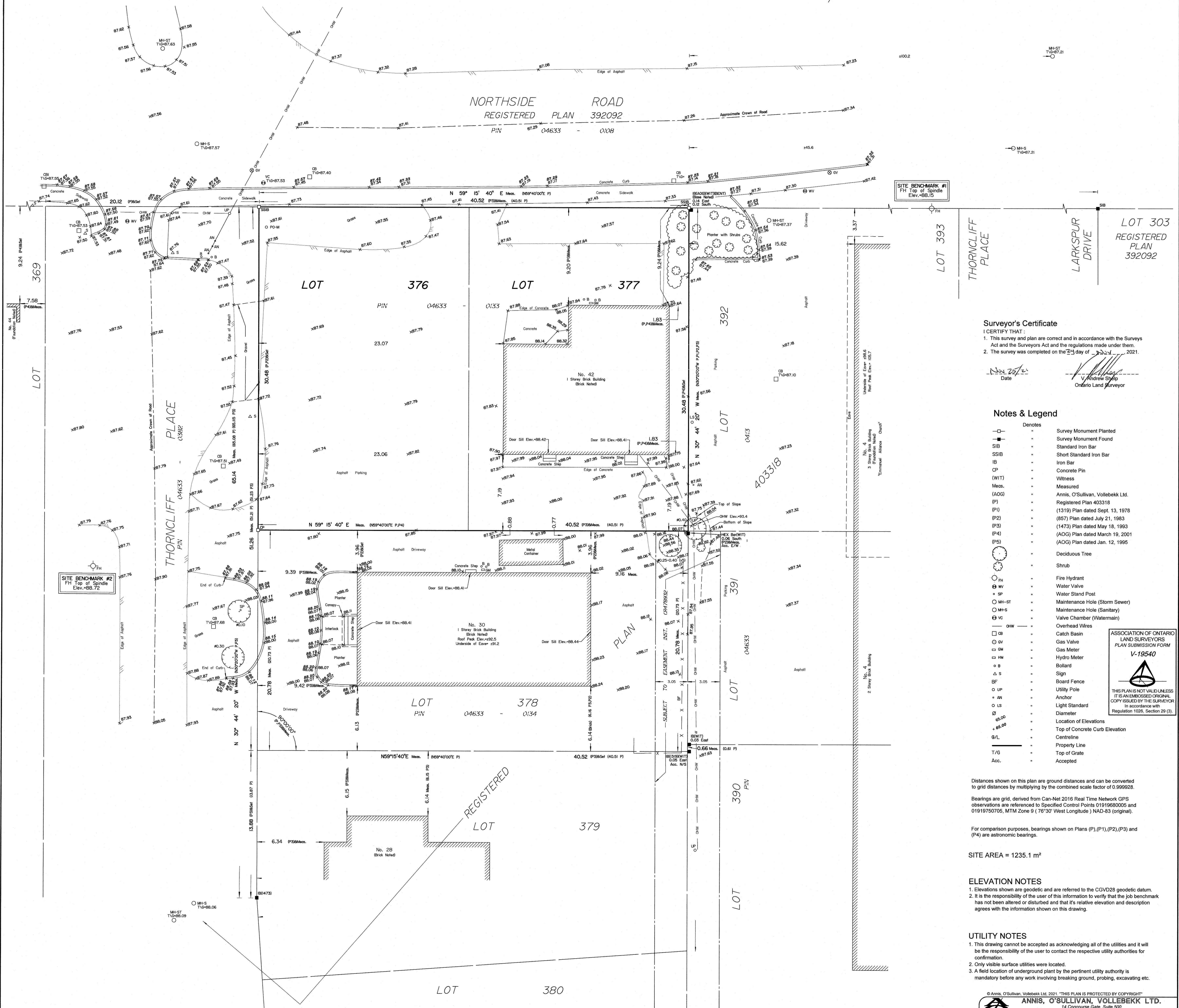
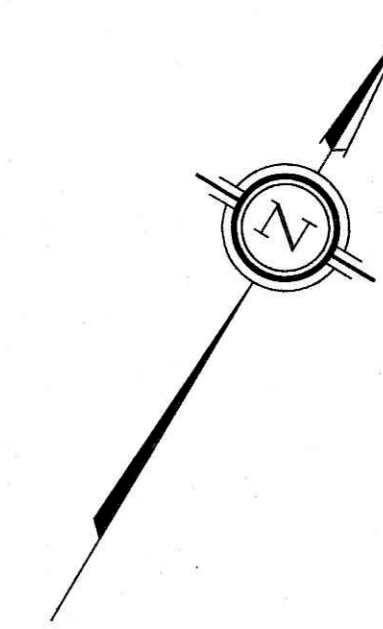
Prepared by Annis, O'Sullivan, Vollebakk Ltd.

Scale 1 : 150



Metric

DISTANCES SHOWN ON THIS PLAN ARE IN METRES AND CAN BE CONVERTED TO FEET BY DIVIDING BY 0.3048



SITE BENCHMARK #1  
FH Top of Spindle  
Elev. +88.15

SITE BENCHMARK #2  
FH Top of Spindle  
Elev. +88.72

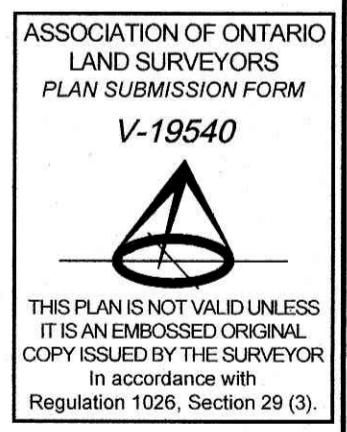
Surveyor's Certificate

I CERTIFY THAT:  
1. This survey and plan are correct and in accordance with the Surveys Act and the Surveyors Act and the regulations made under them.  
2. The survey was completed on the 21 day of 2021.

Date: Nov 20/21  
Andrew Stulp  
Ontario Land Surveyor

Notes & Legend

Denotes	
□	Survey Monument Planted
■	Survey Monument Found
SIB	Standard Iron Bar
SSIB	Short Standard Iron Bar
IB	Iron Bar
CP	Concrete Pin
(WIT)	Witness
Meas.	Measured
(AOG)	Annis, O'Sullivan, Vollebakk Ltd.
(P)	Registered Plan 403318
(P1)	(1319) Plan dated Sept. 13, 1978
(P2)	(857) Plan dated July 21, 1983
(P3)	(1473) Plan dated May 18, 1993
(P4)	(AOG) Plan dated March 19, 2001
(P5)	(AOG) Plan dated Jan. 12, 1995
○	Deciduous Tree
○	Shrub
○ FH	Fire Hydrant
○ W	Water Valve
○ SP	Water Stand Post
○ MH-ST	Maintenance Hole (Storm Sewer)
○ MH-S	Maintenance Hole (Sanitary)
○ VC	Valve Chamber (Watermain)
○ HW	Overhead Wires
□ CB	Catch Basin
○ GV	Gas Valve
○ GM	Gas Meter
○ HM	Hydro Meter
○ B	Bollard
△ S	Sign
BF	Board Fence
○ UP	Utility Pole
○ AN	Anchor
○ LS	Light Standard
○	Diameter
+88.00	Location of Elevations
+85.00	Top of Concrete Curb Elevation
G/L	Centreline
---	Property Line
T/G	Top of Grate
Acc.	Accepted



Distances shown on this plan are ground distances and can be converted to grid distances by multiplying by the combined scale factor of 0.999928.  
Bearings are grid, derived from Can-Net 2016 Real Time Network GPS observations are referenced to Specified Control Points 0191968005 and 01919750705, MTM Zone 9 ( 76°30' West Longitude ) NAD-83 (original).

For comparison purposes, bearings shown on Plans (P1),(P2),(P3) and (P4) are astronomic bearings.

SITE AREA = 1235.1 m<sup>2</sup>

ELEVATION NOTES

1. Elevations shown are geodetic and are referred to the CGVD28 geodetic datum.  
2. It is the responsibility of the user of this information to verify that the job benchmark has not been altered or disturbed and that its relative elevation and description agrees with the information shown on this drawing.

UTILITY NOTES

1. This drawing cannot be accepted as acknowledging all of the utilities and it will be the responsibility of the user to contact the respective utility authorities for confirmation.  
2. Only visible surface utilities were located.  
3. A field location of underground plant by the pertinent utility authority is mandatory before any work involving breaking ground, probing, excavating etc.