



LEGEND:

- PROPERTY LINE
- TREE PRESERVATION FENCE
- EXISTING CONIFEROUS
- EXISTING DECIDUOUS



- KEY MAP, NTS**
- L-TP1 GENERAL NOTES**
- All general site information and conditions compiled from architect's and engineer's plans and surveys.
 - Do not scale this drawing.
 - Report any discrepancies prior to commencing work. No responsibility is born by the Landscape Architect for unknown subsurface conditions.
 - Reinstate all areas and items damaged as a result of construction activities to the satisfaction of the Landscape Architect.
 - Drawing may not be used for construction until signed by Landscape Architect as issued for construction.
 - The accuracy of the position of utilities is not guaranteed.
 - Individual utility co. must be contacted for confirmation of utility existence and location prior to digging.
 - This drawing is an instrument of service and requires the permission of the Landscape Architect for use. Copyright is reserved by the Landscape Architect, David M. Lashley.

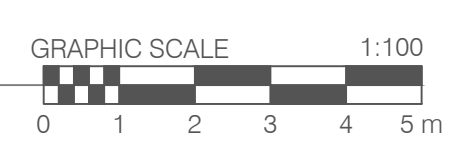
1 PRE-DEVELOPMENT VEGETATION PLAN

TREES ON CITY PROPERTY

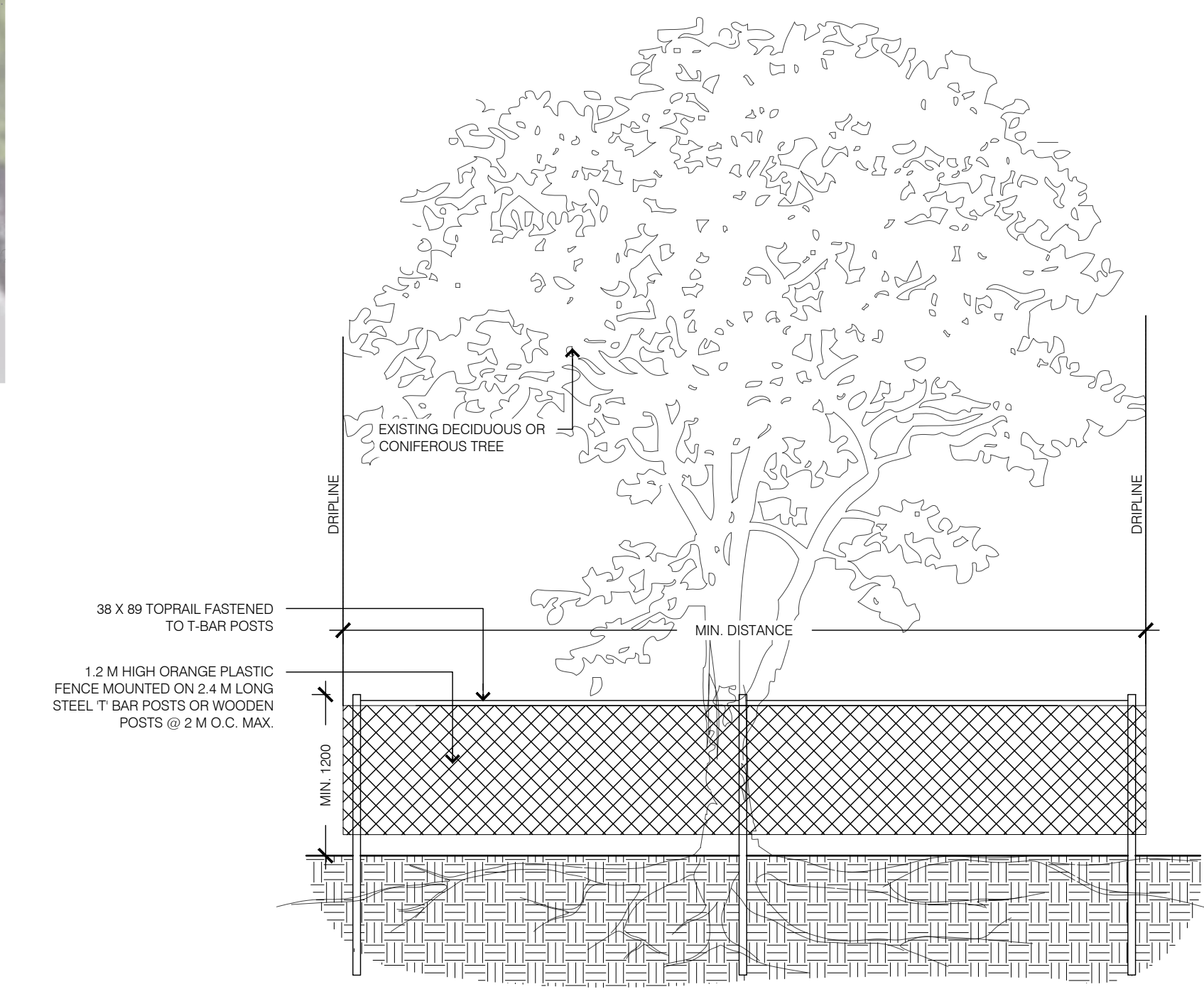
NO.	SPECIES	DBH (CM)	HEALTH	COMMENTS
1	Norway Maple / Acer Platanoides	40	Poor	Broken branch union, internal rot

TREES ON ADJACENT PROPERTY

NO.	SPECIES	DBH (CM)	HEALTH	COMMENTS
2	Honey Locust/ Gleditsia Triacanthos	20, 22, 22, 45	Fair	5 stems joined at 1.3m
3	American Elm / Ulmus americana	40	Poor	5 stems joined at 1.3m. Poorly pruned under hydro lines.



2 TREE PRESERVATION FENCE



- NOTES:**
- THE FOLLOWING PROTECTION MEASURES MUST BE IMPLEMENTED FOR RETAINED TREES, BOTH WITHIN THE WORK AREA AND ON ADJACENT PARCELS.
 - UNDER THE GUIDANCE OF AN ARBORIST, ERECT A MODULAR FENCE AT THE CRITICAL ROOT ZONE (CRZ) OF TREES WHERE THE CRZ IS ESTABLISHED AS BEING 10 CENTIMETERS FROM THE TRUNK FOR EVERY CENTIMETER OF TRUNK DIAMETER AT BREAST HEIGHT.
 - TREE PROTECTION SHALL BE ERECTED TO PROVIDE A CONTINUOUS BARRIAGE BETWEEN DESIGNATED TREES AND THE WORK AREA PRIOR TO CONSTRUCTION.
 - TUNNEL OR BORE WHEN DIGGING WITHIN THE CRZ OF A TREE.
 - ENSURE ALL EQUIPMENT AND CONSTRUCTION RELATED MATERIAL ARE NOT PLACED OR TEMPORARILY STORED WITHIN THE CRZ.
 - ENSURE EXHAUST FUMES FROM ALL EQUIPMENT ARE NOT DIRECTED TOWARDS ANY TREE'S CANOPY.
 - FLOODING OR DEPOSITION OF SEDIMENT SHALL BE PREVENTED WHERE TREES ARE LOCATED.
 - ALL DISTURBED ROOT SYSTEMS SHALL BE EXPOSED AND SHOWFILED IN ONE CONTINUOUS OPERATION TO MINIMIZE DESICCATION.
 - EXPOSED ROOTS SHALL BE KEPT CONTINUOUSLY MOIST DURING EXCAVATION.
 - REMOVE BROKEN AND DAMAGED ROOTS WITH SHARP PRUNING SHEARS.
 - THE TREE PROTECTION MODULAR FENCE IS TEMPORARY. SHALL BE MAINTAINED AT ALL TIMES DURING CONSTRUCTION OPERATIONS, AND SHALL BE REMOVED UPON COMPLETION OF WORK WHEN AGREED TO BY THE CONTRACT ADMINISTRATOR AND LANDSCAPE ARCHITECT.

NO.	DATE	DESCRIPTION
3	2022-04-29	ISSUED FOR SPA
2	2021-12-15	ISSUED FOR COORDINATION
1	2021-12-13	ISSUED FOR COORDINATION

NO. DATE DESCRIPTION

SEAL:

NORTH:

LASHLEY + ASSOCIATES

LANDSCAPE ARCHITECTURE AND SITE ENGINEERING

300 BROADSTONE AVENUE
OTTAWA, ON K1T 5E6
T 613 238 8519
F 613 238 6401
W LashleyA.com
E MAIL@LashleyA.com

CONSULTANT:

PROJECT:

**42 NORTHSIDE ROAD
BELLS CORNERS**
42 NORTHSIDE ROAD, NEPEAN
OTTAWA, ON

DRAWING TITLE:

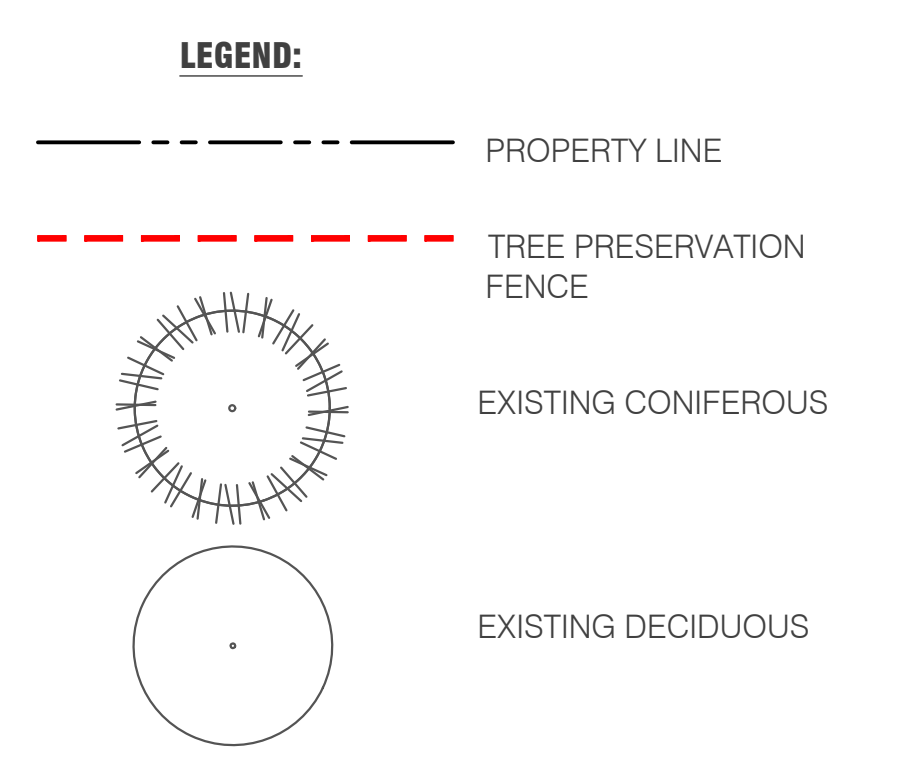
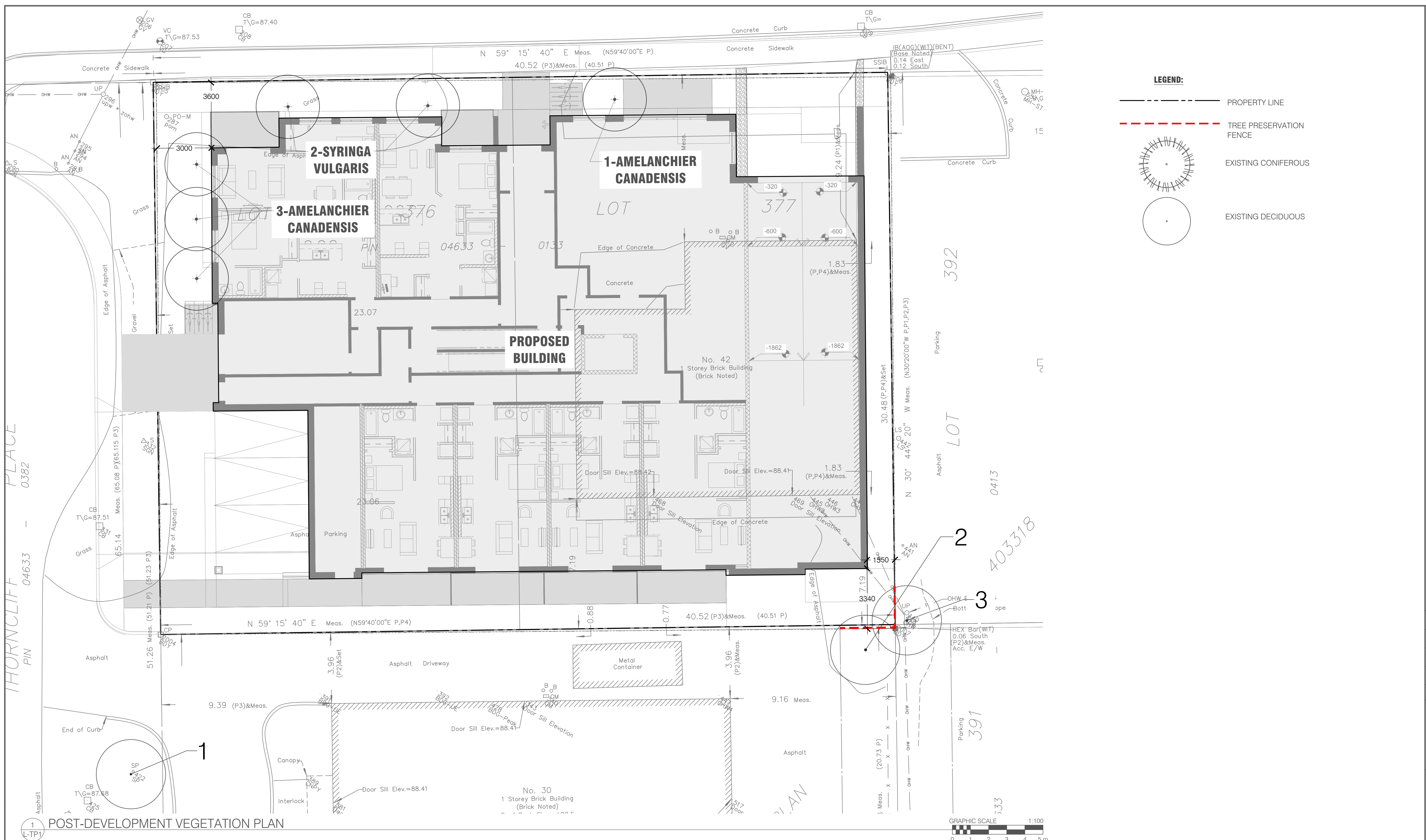
**PRE-DEVELOPMENT
VEGETATION**

DATE: 2021-11-17 **DRAWING NO.:**

SCALE: AS SHOWN

DRAWN BY: NG-RP **L-TP1**

LA PROJECT NO. 21826-1



- L-TP2 GENERAL NOTES**
- All general site information and conditions compiled from architect's and engineer's plans and surveys.
 - Do not scale this drawing.
 - Report any discrepancies prior to commencing work. No responsibility is born by the Landscape Architect for unknown subsurface conditions.
 - Reinstate all areas and items damaged as a result of construction activities to the satisfaction of the Landscape Architect.
 - Drawing may not be used for construction until signed by Landscape Architect as issued for construction.
 - The accuracy of the position of utilities is not guaranteed.
 - Individual utility co. must be contacted for confirmation of utility existence and location prior to digging.
 - This drawing is an instrument of service and requires the permission of the Landscape Architect for use. Copyright is reserved by the Landscape Architect, David M. Lashley.

NO.	DATE	DESCRIPTION
3	2022-04-29	ISSUED FOR SPA
2	2021-12-15	ISSUED FOR COORDINATION
1	2021-12-13	ISSUED FOR COORDINATION

SEAL: NORTH:

LASHLEY + ASSOCIATES
 LANDSCAPE ARCHITECTURE AND SITE ENGINEERING
 205 196 GLACIETTE AVENUE OTTAWA, ON K1Y 2E6
 TEL: 613 238 8871 FAX: 613 238 8871
 WWW.LASHLEY.COM EMAIL: info@lashley.com

CONSULTANT:

PROJECT:
**42 NORTHSIDE ROAD
 BELLS CORNERS**
 42 NORTHSIDE ROAD, NEPEAN
 OTTAWA, ON

DRAWING TITLE:
**POST-DEVELOPMENT
 VEGETATION**

DATE: 2021-11-17 DRAWING NO.:
 SCALE: AS SHOWN
 DRAWN BY: NG-RP
 LA PROJECT NO. 21826-1 **L-TP2**

TREES ON CITY PROPERTY

NO.	SPECIES	DBH (CM)	HEALTH	COMMENTS
1	Norway Maple / Acer Platanoides	40	Poor	

TREES ON ADJACENT PROPERTY

NO.	SPECIES	DBH (CM)	HEALTH	COMMENTS
2	Honey Locust/ Gleditsia Triacanthos	20,22, 22,22, 45	Fair	5 stems joined at 1.3m
3	American Elm / Ulmus americana	40	Poor	5 stems joined at 1.3m



#18658