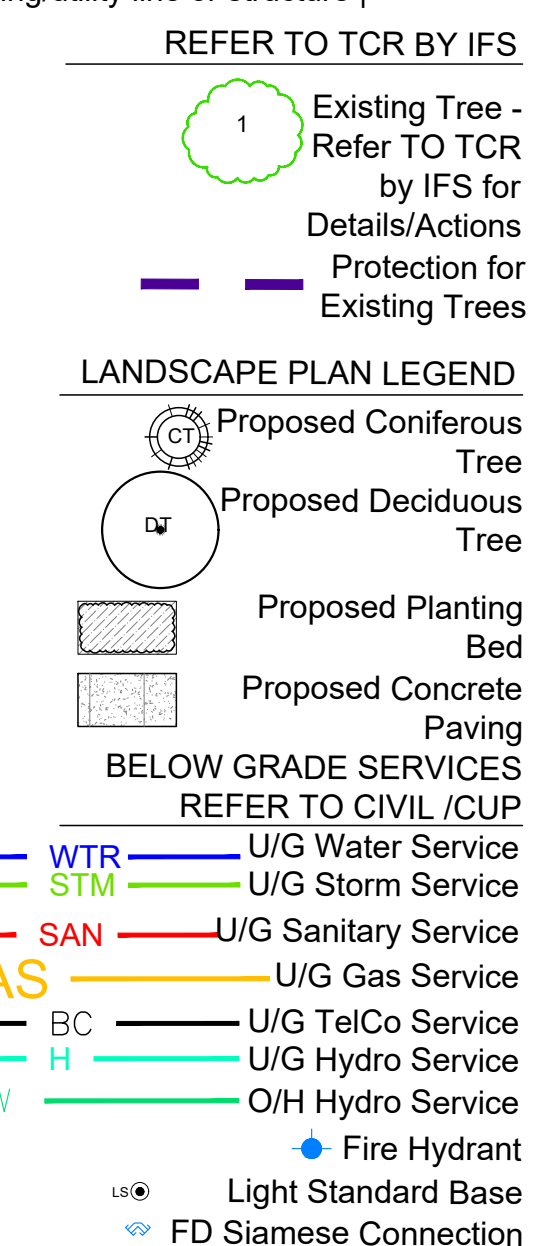
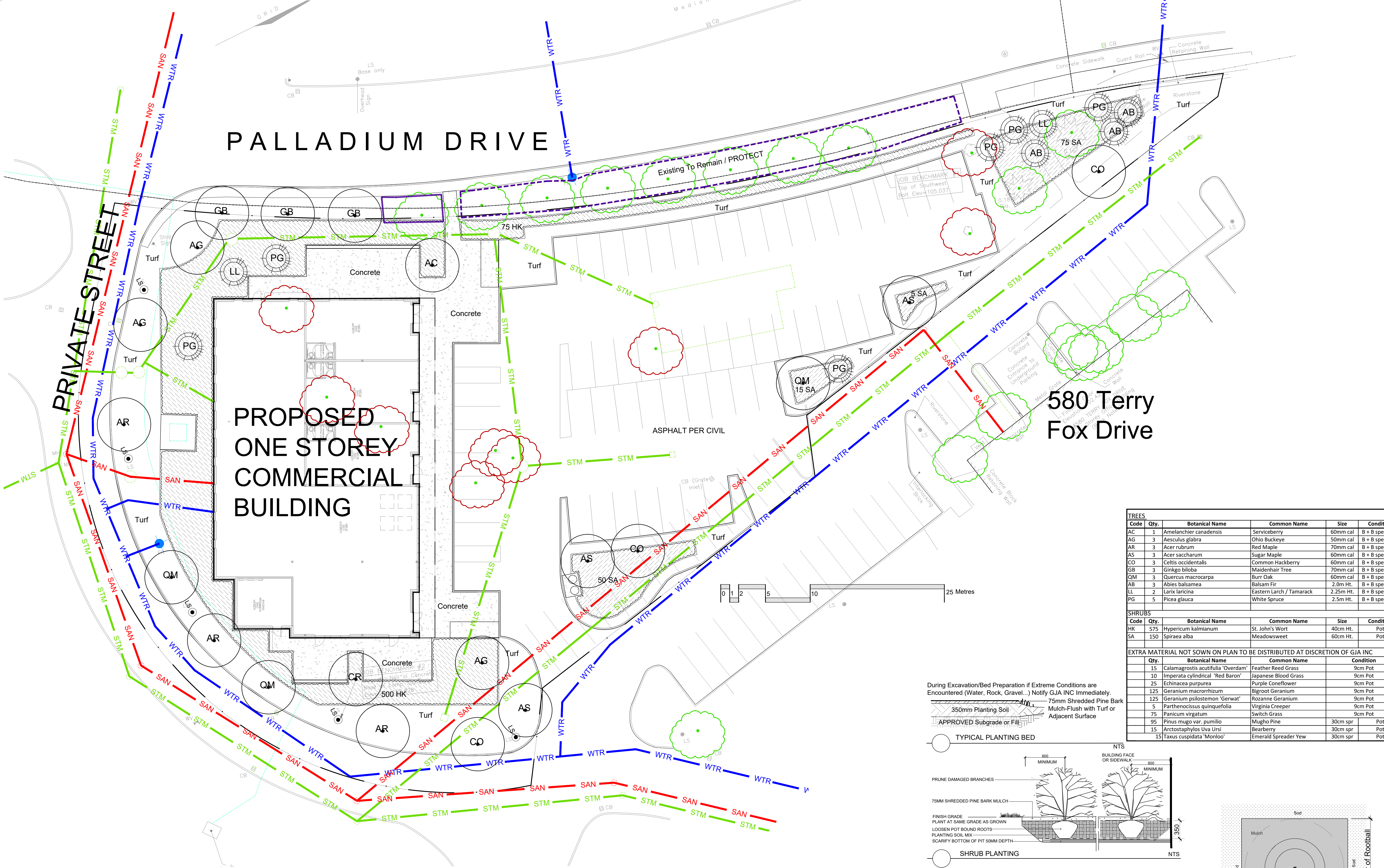


Drawing Remains the Property of/Copyright Reserved by Gino J. Aiello Landscape Architect. Do Not Use or Reproduce Without Approval of Gino J. Aiello.  
**NOT To Be Used For Construction Unless** indicated by Revision: **"FOR LANDSCAPE CONSTRUCTION"**.  
**Contractor is Responsible** for Verification of Site Locations of all Utilities. Report any Discrepancies Between Site and Drawing Immediately to Gino J. Aiello. Do NOT Proceed Until Clarified.  
 TURF AREAS TO BE SOD C/W 150MM DEPTH TOPSOIL ON APPROVED SUBGRADE | SOD TO BE #1 GRADE TURFGRASS NURSERY SOD per NSGA - Fine Fescue/Kentucky Bluegrass Sod | PLANTING MIX TO BE APPROVED BY LANDSCAPE ARCHITECT | PLANT MATERIAL TO MEET CNLA STANDARDS/BE APPROVED BY LANDSCAPE ARCHITECT PRIOR TO PLANTING | ALL MATERIALS & WORK TO BE MAINTAINED UNTIL FINAL ACCEPTANCE, (MOWING TURF, WEEDING BEDS, WATERING TURF & PLANTS) & INCLUDE 1 YEAR WARRANTY FROM DATE OF FINAL ACCEPTANCE | PROVIDE WATERING OF ALL PLANT MATERIAL AS REQUIRED FOR PROPER ESTABLISHMENT, UNTIL END OF WARRANTY PERIOD | REFER TO CIVIL ENGINEER'S DRAWING FOR ELEVATIONS / GRADING |  
 The Landscape Plan is to be read in conjunction with the grading, servicing, site and survey plan | Bare root material to be planted in season only | All plant material locations to be staked on site by the landscape contractor and checked by the landscape architect prior to planting | All trees to be preserved on or directly adjacent to the site will be protected | Plant material are to be installed a minimum of, 3.0m away from any part of any hydro transformer, 3.0m corridor between a fire hydrant and the curb, a 2.5m radius beside or behind a fire hydrant, 2.0m from any servicing/utility line or structure |



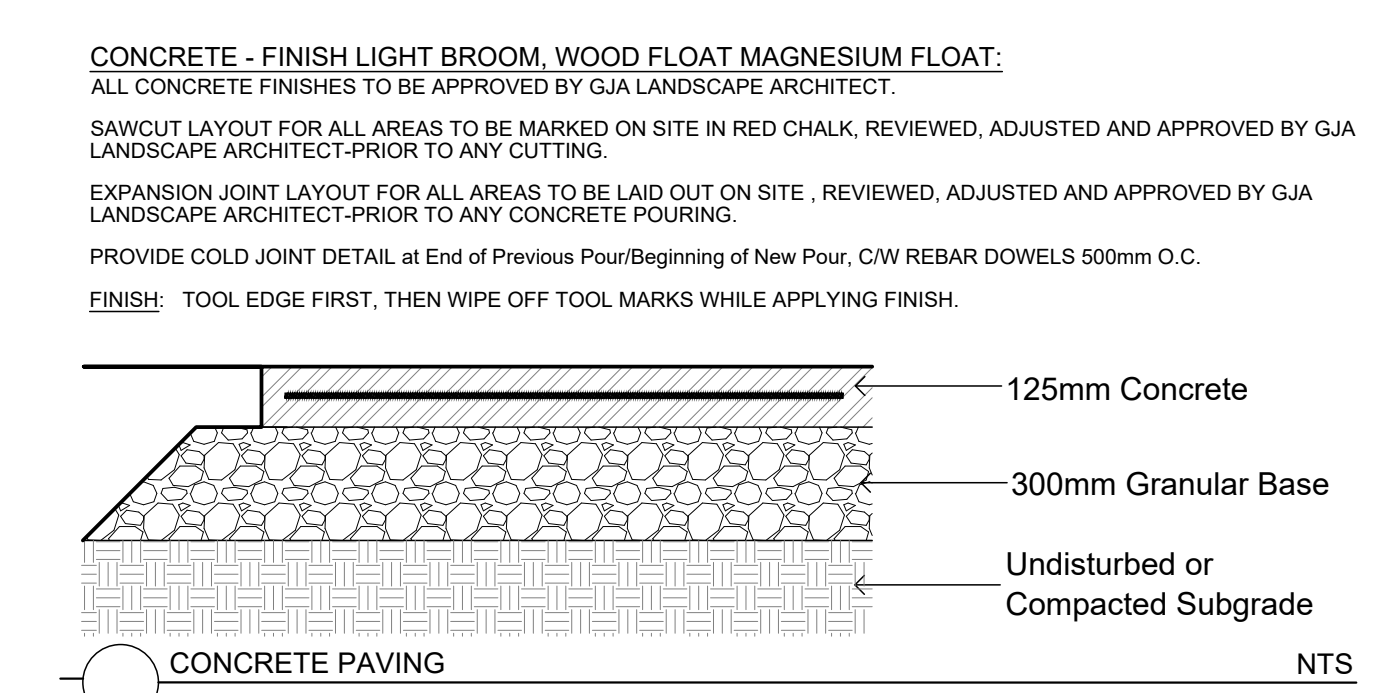
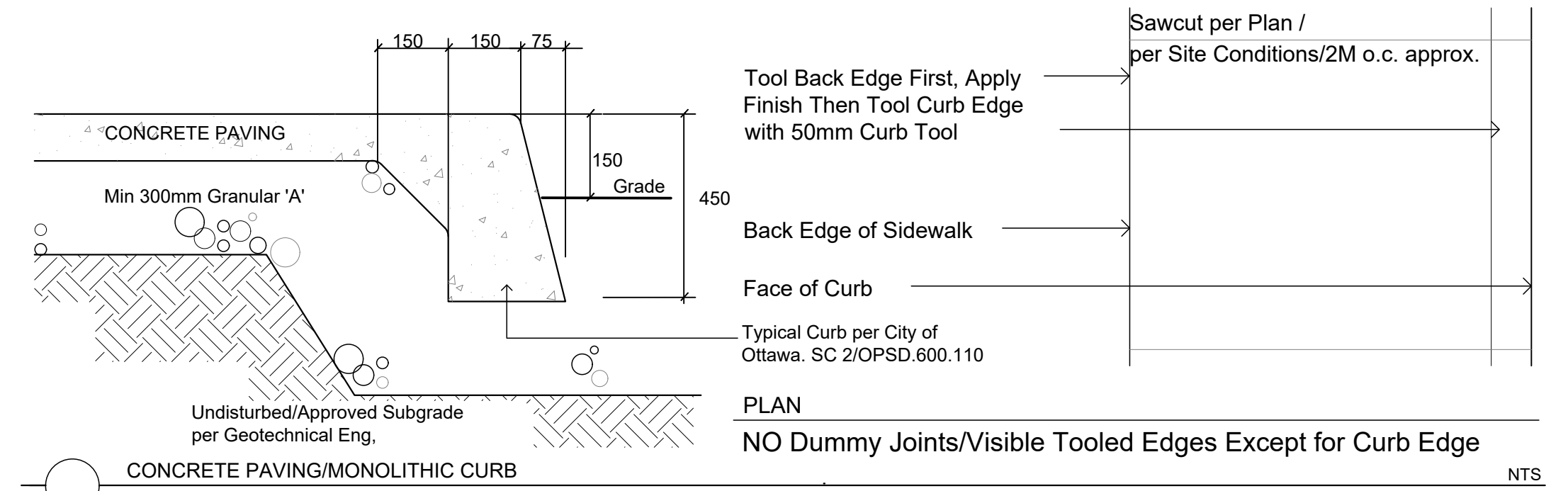
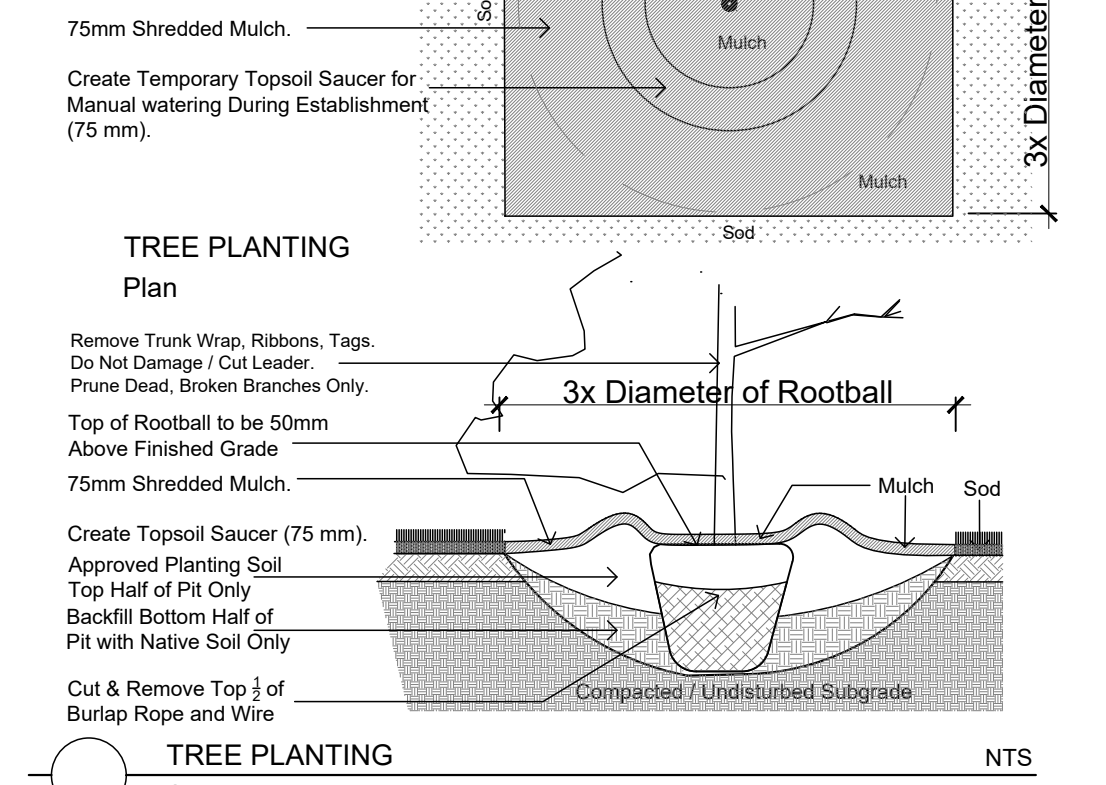
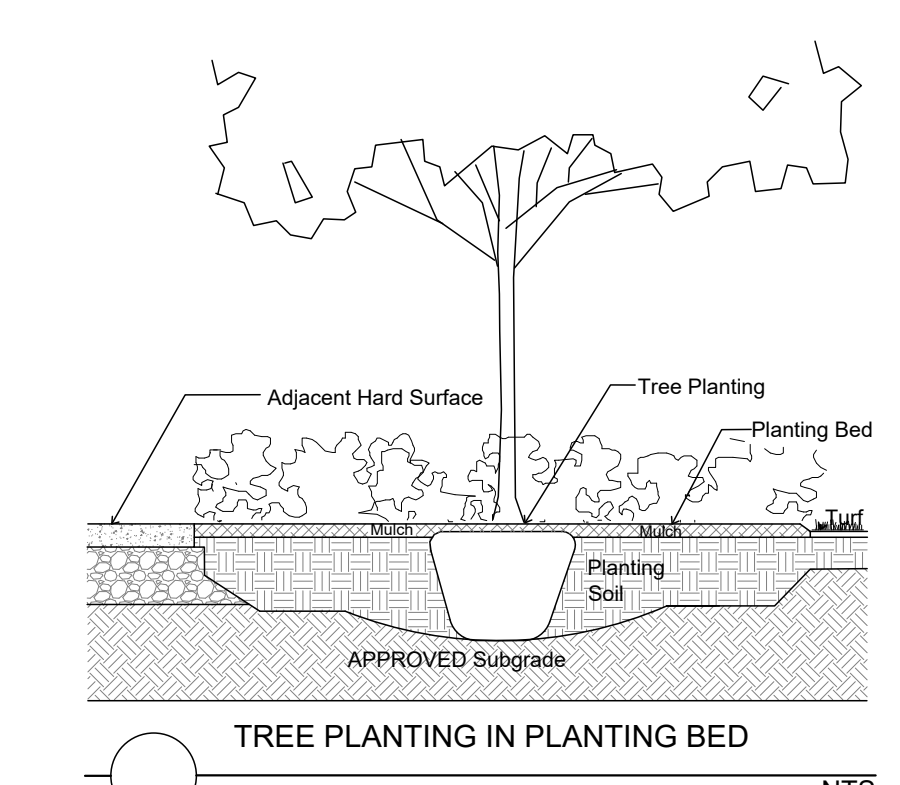
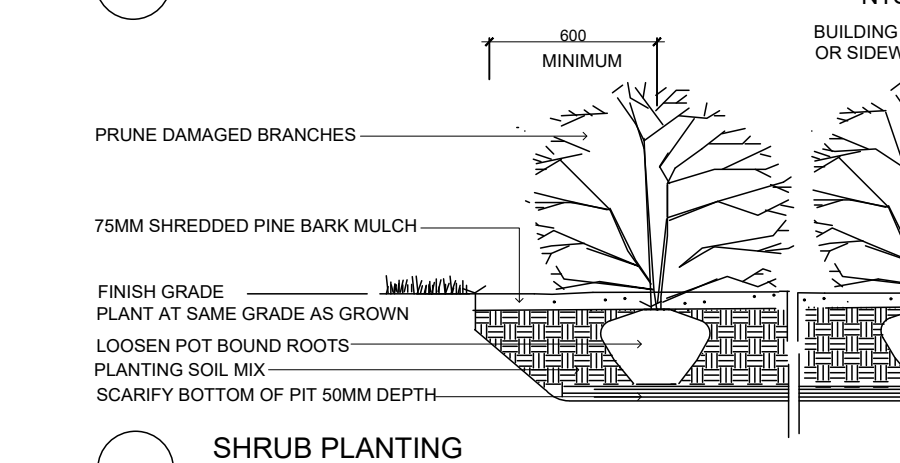
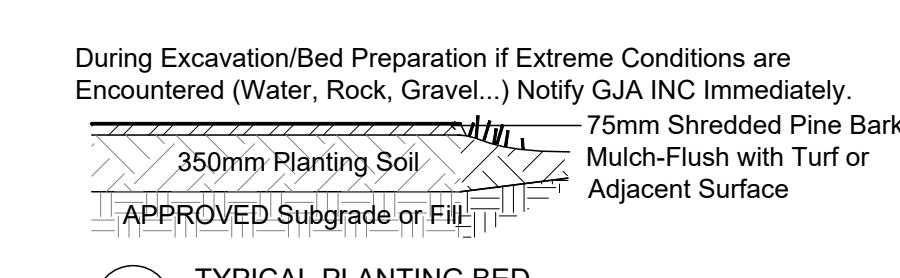
TREES	Code	Qty.	Botanical Name	Common Name	Size	Condition
AC	1	1	Amelanchier canadensis	Serviceberry	60mm cal	B + B specimen
AG	3	3	Aesculus glabra	Ohio Buckeye	50mm cal	B + B specimen
AR	3	3	Acer rubrum	Red Maple	70mm cal	B + B specimen
AS	3	3	Acer saccharum	Sugar Maple	60mm cal	B + B specimen
CO	3	3	Celtis occidentalis	Common Hackberry	60mm cal	B + B specimen
GB	3	3	Ginkgo biloba	Maidenhair Tree	70mm cal	B + B specimen
QM	3	3	Quercus macrocarpa	Burr Oak	60mm cal	B + B specimen
AB	3	3	Abies balsamea	Balsam Fir	2.0m Ht.	B + B specimen
LL	2	2	Larix laricina	Eastern Larch / Tamarack	2.25m Ht.	B + B specimen
PG	5	5	Picea glauca	White Spruce	2.5m Ht.	B + B specimen

SHRUBS	Code	Qty.	Botanical Name	Common Name	Size	Condition
HK	575	575	Hypericum kalmianum	St. John's Wort	40cm Ht.	Pot
SA	150	150	Spiraea alba	Meadowsweet	60cm Ht.	Pot

EXTRA MATERIAL NOT SOWN ON PLAN TO BE DISTRIBUTED AT DISCRETION OF GJA INC	Qty.	Botanical Name	Common Name	Condition
15	15	Calamagrostis acutiflora 'Overdam'	Feather Reed Grass	9cm Pot
10	10	Imperata cylindrical 'Red Baron'	Japanese Blood Grass	9cm Pot
25	25	Echinacea purpurea	Purple Coneflower	9cm Pot
125	125	Geranium macrorrhizum	Bigroot Geranium	9cm Pot
125	125	Geranium psilostemon 'Gerwat'	Rozanne Geranium	9cm Pot
5	5	Parthenocissus quinquefolia	Virginia Creeper	9cm Pot
75	75	Panicum virgatum	Switch Grass	9cm Pot
95	95	Pinus mugo var. pumilio	Mugho Pine	30cm spr
15	15	Arctostaphylos Uva Ursi	Bearberry	30cm spr
15	15	Taxus cuspidata 'Monlo'	Emerald Spreader Yew	30cm spr



1 SITE PLAN CONTROL SUBMISSION 1 JANUARY 21 2022

0 REVIEW/COORDINATION DEC. 2021 - JAN 2022

# Revision Date

Property Owner  
**MAZIN PROPERTIES**  
 4015 Carling Avenue Kanata Ontario  
 613 831 9943

Gino J. Aiello | landscape architect GJALA.com  
 GJA Inc. Gino@GJALA.com (613) 286 5130  
 110 Dabroy Road Unit # 9 | Ottawa Ontario | K2T 0C2

Project **One Storey Commercial Development**  
 301 Palladium Drive KANATA

Drawing **Landscape Plan**

Scale: 1:400  
 City of Ottawa  
 Dwg - 17805

Sheet Number **L1**

D07-12-15-0147