

| REMOVE | EXISTING TO REMAIN | NEW | ELECTRICAL LEGEND |
|--------|--------------------|-----|---|
| AA | AA | AA | EXTERIOR LIGHT STANDARD FIXTURE, LETTER DENOTES TYPE. |
| BB | BB | BB | WALL MOUNTED FIXTURE, LETTER DENOTES TYPE. |
| PC | PC | PC | PHOTOCELL. |

ABBREVIATIONS:
WP - WEATHER PROOF
UON - UNLESS OTHERWISE NOTED
NIC - NOT IN CONTRACT

| ELECTRICAL DRAWING LIST | |
|-------------------------|--|
| DRAWING No. | DESCRIPTION |
| ES1 | ELECTRICAL: LEGEND, DRAWING LIST AND DETAILS |
| ES2 | ELECTRICAL: SITE PLAN |

| LIGHTING FIXTURE SCHEDULE | | | | | |
|---------------------------|---|-----------|------|-------------|--|
| TYPE | DESCRIPTION | LAMPS | VOLT | MOUNTING | REMARKS |
| AA | LED AREA FLOOD LIGHT STANDARD LITHONIA LIGHTING DSX1 SERIES | 200W LED | 347 | POLE 5186mm | - RUGGED DIE CAST ALUMINUM, TYPE DA MOUNT - 4000K - C/W BACKLIGHT CONTROL - COLOUR TO BE SELECTED BY CLIENT |
| AB | LED AREA FLOOD LIGHT STANDARD LITHONIA LIGHTING DSX0 SERIES | 45W LED | 347 | POLE 2260mm | - RUGGED DIE CAST ALUMINUM, TYPE DA MOUNT - 4000K, TYPE II DISTRIBUTION - C/W HOUSE SIDE SHEILD - COLOUR TO BE SELECTED BY CLIENT |
| BA | LED WALL MOUNTED LIGHT FIXTURE CREE XSP-A SERIES | 42.7W LED | 347 | WALL | - RUGGED LIGHTWEIGHT DIE CAST ALUMINUM - 4000K, TYPE III DISTRIBUTION - COLOUR TO BE SELECTED BY CLIENT |
| BB | LED WALL MOUNTED LIGHT FIXTURE CREE XSP-A SERIES | 24.4W LED | 347 | WALL | - RUGGED LIGHTWEIGHT DIE CAST ALUMINUM - 4000K, TYPE III DISTRIBUTION - COLOUR TO BE SELECTED BY CLIENT |
| CC | EXISTING LIGHT STANDARD | | | | |

THESE DESIGN DOCUMENTS ARE PREPARED SOLELY FOR THE USE BY THE PARTY WITH WHOM THE DESIGN PROFESSIONAL HAS ENTERED INTO A CONTRACT AND THERE ARE NO REPRESENTATIONS OF ANY KIND MADE BY THE DESIGN PROFESSIONAL TO ANY PARTY WITH WHOM THE DESIGN PROFESSIONAL HAS NOT ENTERED INTO A CONTRACT.

THE PAPER COPY OF THE DRAWINGS ISSUED FOR BUILDING PERMIT AND/OR TENDER WILL TAKE PRECEDENCE OVER ELECTRONIC COPIES.

| REVISION No. | DESCRIPTION | DATE |
|--------------|--------------------|-----------|
| 1 | SITE PLAN APPROVAL | APR 18/16 |

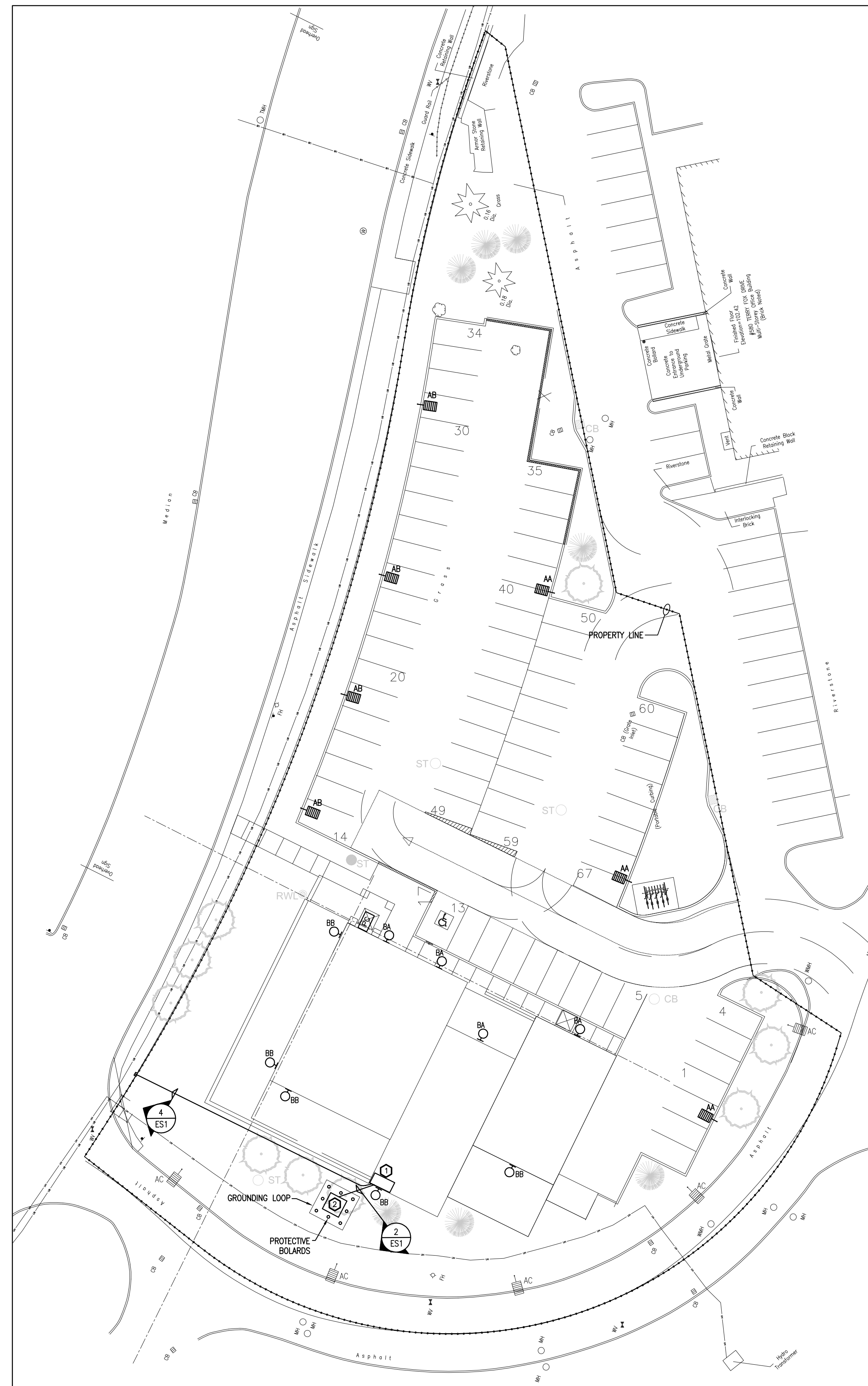
MCKEE ENGINEERING
R.J. MCKEE ENGINEERING LTD.
1785 Woodward Drive
Ottawa, ON K2C 0P9
CANADA
Tel: (613) 723-9585
Fax: (613) 723-9584
www.mckeeottawa.ca

PROJECT:
CITANT PALLADIUM DRIVE
NEW BUILDING
301 PALLADIUM DRIVE
OTTAWA, ONTARIO

DRAWING:
ELECTRICAL:
LEGEND, DRAWING LIST
AND DETAILS

DATE: MARCH 2016
DESIGNED BY: S. MILEK
DRAWN BY: S. MILEK
CHECKED BY: B.T.
SCALE: N.T.S.

No. DWGS: 2
PROJECT No.
DRAWING No.
16-108
ES1



1 SITE PLAN
ES2 SCALE 1:300

GENERAL NOTES

1. SITE LIGHTING FOR THIS PROJECT IS DESIGNED USING ONLY FIXTURES THAT MEET THE CRITERIA FOR FULL CUT-OFF (SHARP CUT-OFF) CLASSIFICATION, AS RECOGNIZED BY THE ILLUMINATING ENGINEERING SOCIETY OF NORTH AMERICA (IESNA OR IES). THE LAYOUT RESULTS IN MINIMAL LIGHT SPILLAGE ONTO ADJACENT PROPERTIES, WITH LESS THAN 0.5 FOOTCANDLE SPILLAGE AT THE PROPERTY LINE.
2. LIGHTING LEVELS ARE SHOWN IN FOOTCANDLES.

DRAWING NOTES

1. APPROXIMATE LOCATION OF ELECTRICAL ROOM.
2. PROPOSED LOCATION FOR NEW PAD-MOUNTED TRANSFORMER. PROVIDE CONCRETE BASE TO HYDRO OTTAWA STANDARD DETAIL UCS0001, GROUNDING UCS0002 AND BOLLARDS DETAIL UFS0001.

THESE DESIGN DOCUMENTS ARE PREPARED SOLELY FOR THE USE BY THE PARTY WITH WHOM THE DESIGN PROFESSIONAL HAS ENTERED INTO A CONTRACT AND THERE ARE NO REPRESENTATIONS OF ANY KIND MADE BY THE DESIGN PROFESSIONAL TO ANY PARTY WITH WHOM THE DESIGN PROFESSIONAL HAS NOT ENTERED INTO A CONTRACT.

THE PAPER COPY OF THE DRAWINGS ISSUED FOR BUILDING PERMIT AND/OR TENDER WILL TAKE PRECEDENCE OVER ELECTRONIC COPIES.

| REVISION No. | DESCRIPTION | DATE |
|--------------|--------------------|-----------|
| 1 | SITE PLAN APPROVAL | APR 18/16 |

MCKEE ENGINEERING
R.J. MCKEE ENGINEERING LTD.
1785 Woodward Drive
Ottawa, ON K2C 0P9
CANADA
Tel: (613) 723-9585
Fax: (613) 723-9584
www.mckeeottawa.ca

PROJECT:
CITANT PALLADIUM DRIVE
NEW BUILDING
301 PALLADIUM DRIVE
OTTAWA, ONTARIO

DRAWING:
ELECTRICAL:
SITE PLAN

DATE: MARCH 2016
DESIGNED BY: S. MILEK
DRAWN BY: S. MILEK
CHECKED BY: B.T.
SCALE: AS SHOWN

No. DWGS: 2
PROJECT No. 16-108
DRAWING No. ES2