

NOTE:
 CONTRACTOR SHALL IMPLEMENT BEST MANAGEMENT PRACTICES, AND ARE TO MAINTAIN THE EXISTING DRAINAGE PATTERNS / SYSTEMS, DURING CONSTRUCTION ACTIVITIES. THE CONTRACTOR ACKNOWLEDGES THAT FAILURE TO IMPLEMENT APPROPRIATE EROSION AND SEDIMENT CONTROL MEASURES MAY BE SUBJECT TO PENALTIES IMPOSED BY ANY APPLICABLE REGULATORY AGENCY.

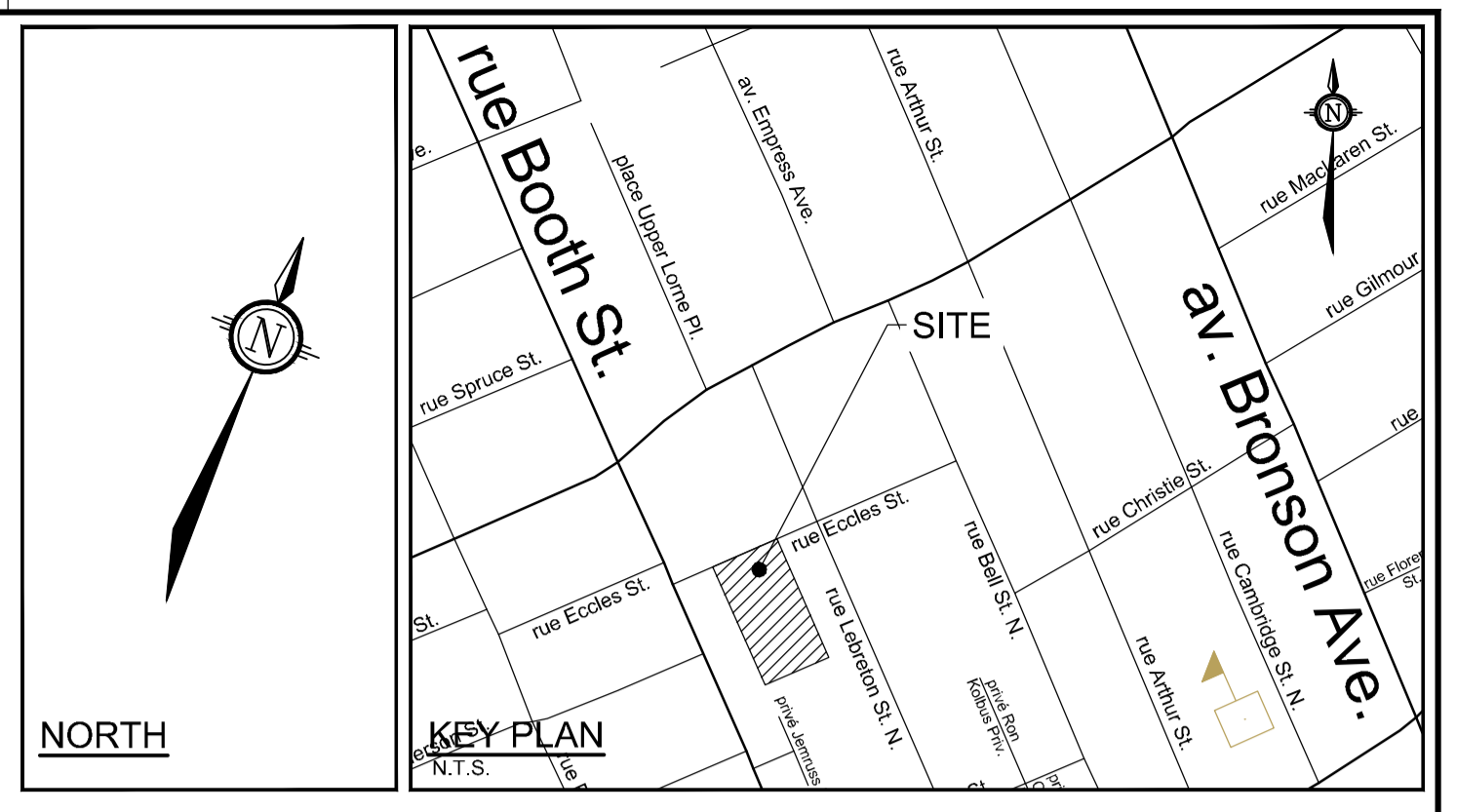
USE PROTECTION FENCING AND BEST EFFORTS TO REDUCE IMPACT TO ADJACENT LANDS' EXISTING FEATURES INCLUDING, BUT NOT LIMITED TO, RETAINING WALLS, FENCES, HARD AND SOFT LANDSCAPE. ANY DISTURBED AREA IS TO BE REINSTATED TO EXISTING CONDITIONS OR BETTER, TO THE SATISFACTION OF PROPERTY OWNER AND CITY.

DURING SERVICING, GRADING, AND REINSTATEMENT WORKS, TIE INTO EXISTING ELEVATIONS AND ELIMINATE ENCROACHMENT INTO ADJACENT PROPERTY LANDS, WHERE POSSIBLE. PERMISSION REQUIRED FOR WORKS ON ADJACENT PROPERTY LANDS.

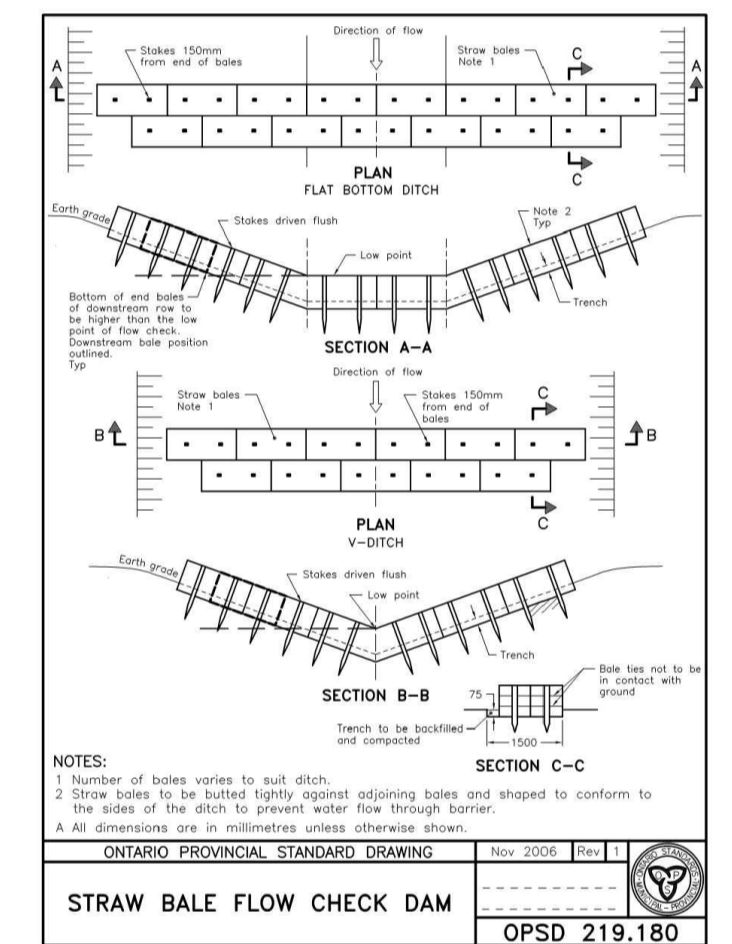
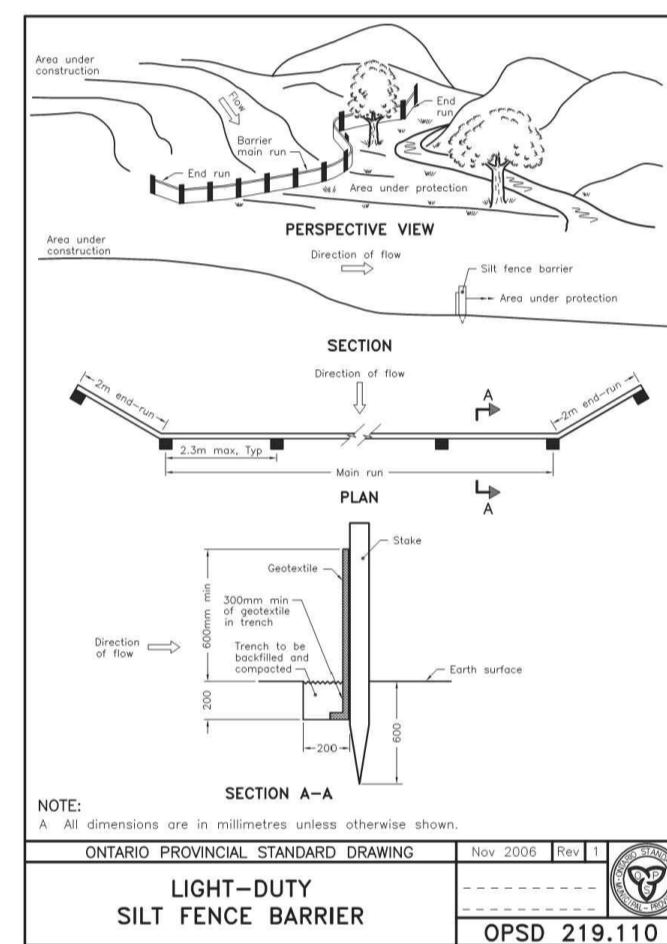
NOTE:
 THE POSITION OF ALL POLE LINES, CONDUITS, WATERMANS, SEWERS AND OTHER UNDERGROUND AND OVERGROUND UTILITIES AND STRUCTURES IS NOT NECESSARILY SHOWN ON THE CONTRACT DRAWINGS, AND WHERE SHOWN, THE ACCURACY OF THE POSITION OF SUCH UTILITIES AND STRUCTURES IS NOT GUARANTEED. BEFORE STARTING WORK, DETERMINE THE EXACT LOCATION OF ALL SUCH UTILITIES AND STRUCTURES AND ASSUME ALL LIABILITY FOR DAMAGE TO THEM.

EROSION AND SEDIMENT CONTROL NOTES:

- ALL EROSION AND SEDIMENT CONTROLS ARE TO BE INSTALLED TO THE SATISFACTION OF THE CITY OF OTTAWA AND MINISTRY OF ENVIRONMENT, CONSERVATION AND PARKS (MECP), APPROPRIATE TO THE SITE CONDITIONS, PRIOR TO UNDERTAKING ANY SITE ALTERATIONS (FILLING, GRADING, REMOVAL OF VEGETATION, ETC.) AND DURING ALL PHASES OF SITE PREPARATION AND CONSTRUCTION IN ACCORDANCE WITH THE CURRENT BEST MANAGEMENT PRACTICES FOR EROSION AND SEDIMENT CONTROL SUCH AS BUT NOT LIMITED TO INSTALLING SILTSACKS ACROSS MANHOLE/CATCHBASIN LIDS TO PREVENT SEDIMENTS FROM ENTERING STRUCTURES AND INSTALL AND MAINTAIN A LIGHT DUTY SILT FENCE BARRIER AS REQUIRED.
- TO PREVENT SURFACE EROSION FROM ENTERING THE STORM SYSTEM DURING CONSTRUCTION, SILTSACKS WILL BE PLACED UNDER ALL PROPOSED AND SURROUNDING CATCHBASINS AND MANHOLES. THE SILTSACKS WILL REMAIN IN PLACE UNTIL VEGETATION HAS BEEN ESTABLISHED AND CONSTRUCTION COMPLETE.
- CONTRACTOR IS TO INSTALL STRAW BALES AS PER OPSD 219.180 AS INDICATED AND DIRECTED BY THE ENGINEER PRIOR TO THE COMMENCEMENT OF CONSTRUCTION.
- ALL AREAS DISTURBED BY CONSTRUCTION ARE TO BE TREATED WITH IMPORTED TOPSOIL, SEED AND MULCH.
- THE CONTRACTOR ACKNOWLEDGES THAT FAILURE TO IMPLEMENT EROSION AND SEDIMENT CONTROL MEASURES MAY BE SUBJECT TO PENALTIES IMPOSED BY ANY APPLICABLE REGULATORY AGENCY.
- THE CONTRACTOR SHALL KEEP MATERIAL FOR ADDITIONAL EROSION AND SEDIMENT CONTROLS ONSITE AT ALL TIMES. THESE MATERIALS INCLUDE BUT ARE NOT LIMITED TO: SILT FENCES, STRAW BALES, SEDIMENT BAGS AND CLEAR STONE. A CONTINGENCY PLAN TO INCLUDE THE PROVISION OF ADDITIONAL LABOUR, EQUIPMENT OR MATERIALS TO INSTALL ADDITIONAL CONTROL MEASURES, AS WELL AS PROVIDE AN EMERGENCY RESPONSE PLAN IN CASE OF AN ACCIDENTAL OR RAINFALL EVENT. AS SUCH, THE CONTRACTORS SHALL HAVE ADDITIONAL CONTROL MEASURES ON SITE ALL TIMES WHICH ARE EASILY ACCESSIBLE AND MAY BE IMPLEMENTED AT A MOMENT'S NOTICE.
- MUD MATS ARE TO BE INSTALLED AND MAINTAINED AT CONSTRUCTION ACCESS POINTS TO MINIMIZE SEDIMENT TRANSFER TO EXISTING ROADWAYS (SEE MUD MAT DETAIL).
- COORDINATE ALL WORK WITH THE OWNER AND CONTRACT ADMINISTRATOR



- LEGEND**
- LIGHT DUTY SILT FENCE BARRIER AS PER OPSD 219.110
 - - - - TREE PROTECTION FENCE (REFER TO LANDSCAPE ARCHITECT'S DRAWINGS FOR FURTHER DETAILS ON TREE PROTECTION FENCE)
 - ▨ TEMPORARY LIGHT-DUTY STRAW BALE BARRIER AS PER OPSD 219.180
 - EXISTING ASPHALT



No.	REVISION	DATE	BY
1.	ISSUED FOR CITY REVIEW	FEB 02/22	BHB

SCALE

1:200

FOR REVIEW ONLY

DESIGN AN
 CHECKED BCS
 DRAWN AN
 CHECKED BCS
 APPROVED BHB

LICENSED PROFESSIONAL ENGINEER
 B. C. SWEET
 100206031
 FEB 2, 2022
 PROVINCE OF ONTARIO

LICENSED PROFESSIONAL ENGINEER
 B. H. BAHIA
 100164647
 FEB 02, 2022
 PROVINCE OF ONTARIO

NOVATECH
 Engineers, Planners & Landscape Architects
 Suite 200, 240 Michael Cowpland Drive
 Ottawa, Ontario, Canada K2M 1P6

Telephone (613) 254-9643
 Facsimile (613) 254-5867
 Website www.novatech-eng.com

LOCATION
 CITY OF OTTAWA
 44 ECCLES STREET

DRAWING NAME
EROSION AND SEDIMENT CONTROL PLAN

PROJECT No. 121255-00
 REV. REV # 1
 DRAWING No. 121255-ESC

M:\2021\121255\CAD\Design\121255-ESC.dwg, ESC, Feb 02, 2022 - 12:37pm, bawest

#XXXX
 XXX-XX-XX-XXXX
 DXX-XX-XX-XXXX