

**NOTE:**  
 CONTRACTOR SHALL IMPLEMENT BEST MANAGEMENT PRACTICES, AND ARE TO MAINTAIN THE EXISTING DRAINAGE PATTERNS / SYSTEMS, DURING CONSTRUCTION ACTIVITIES. THE CONTRACTOR ACKNOWLEDGES THAT FAILURE TO IMPLEMENT APPROPRIATE EROSION AND SEDIMENT CONTROL MEASURES MAY BE SUBJECT TO PENALTIES IMPOSED BY ANY APPLICABLE REGULATORY AGENCY.

USE PROTECTION FENCING AND BEST EFFORTS TO REDUCE IMPACT TO ADJACENT LANDS' EXISTING FEATURES INCLUDING, BUT NOT LIMITED TO, RETAINING WALLS, FENCES, HARD AND SOFT LANDSCAPE. ANY DISTURBED AREA IS TO BE REINSTATED TO EXISTING CONDITIONS OR BETTER, TO THE SATISFACTION OF PROPERTY OWNER AND CITY.

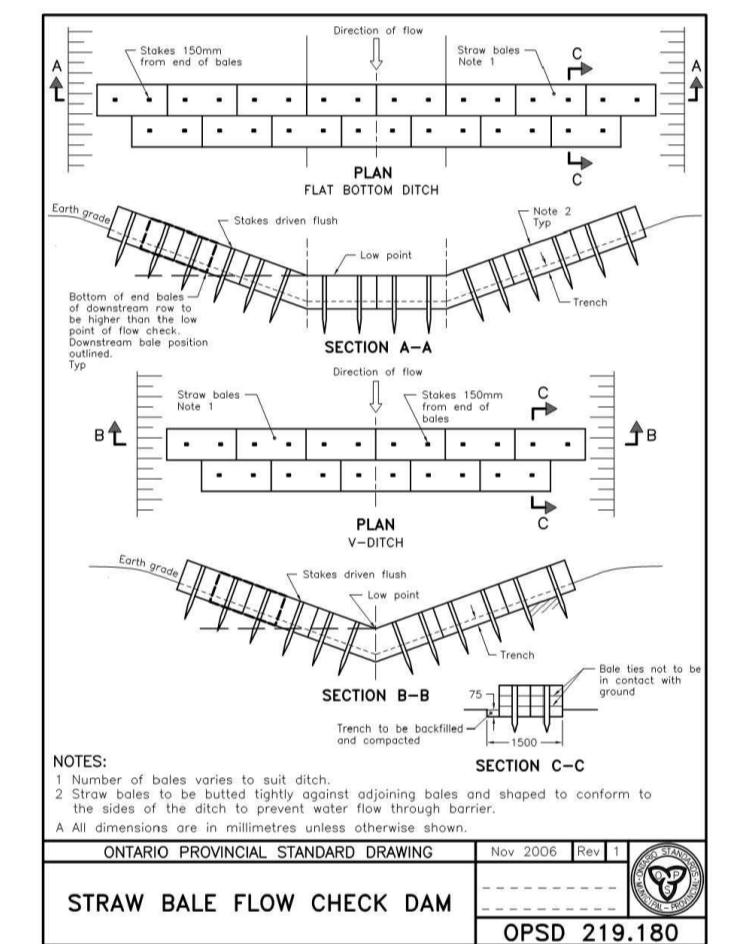
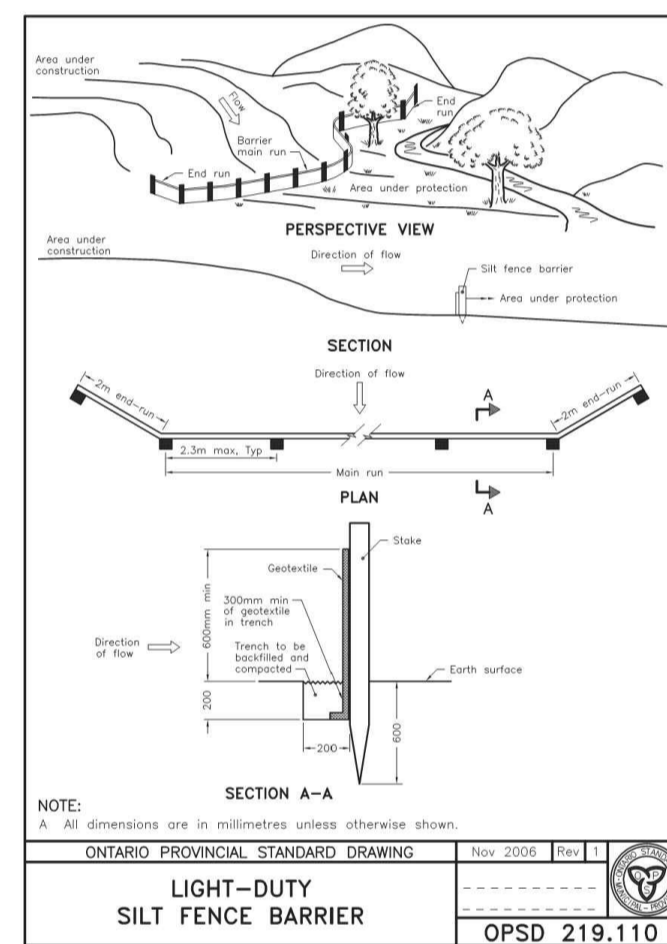
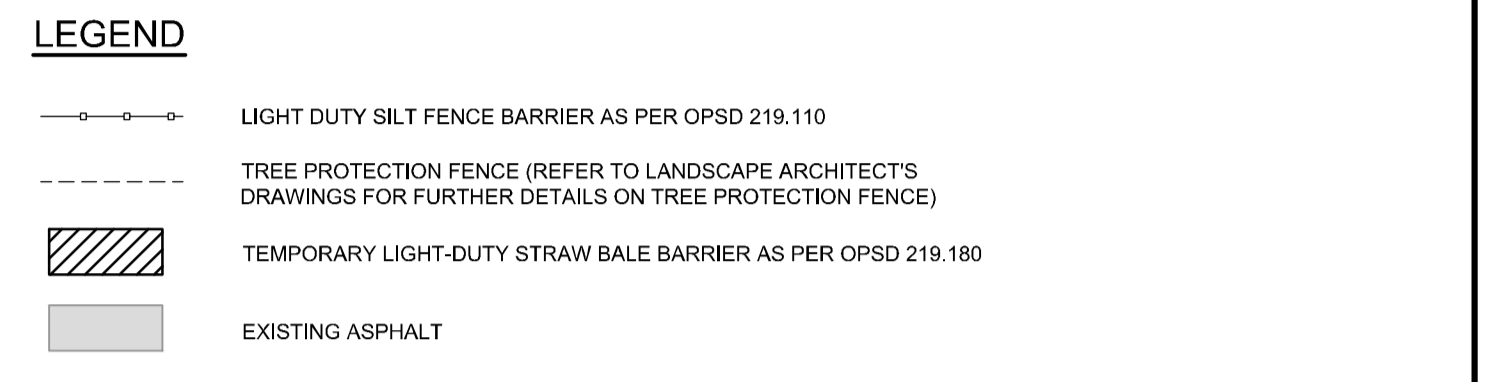
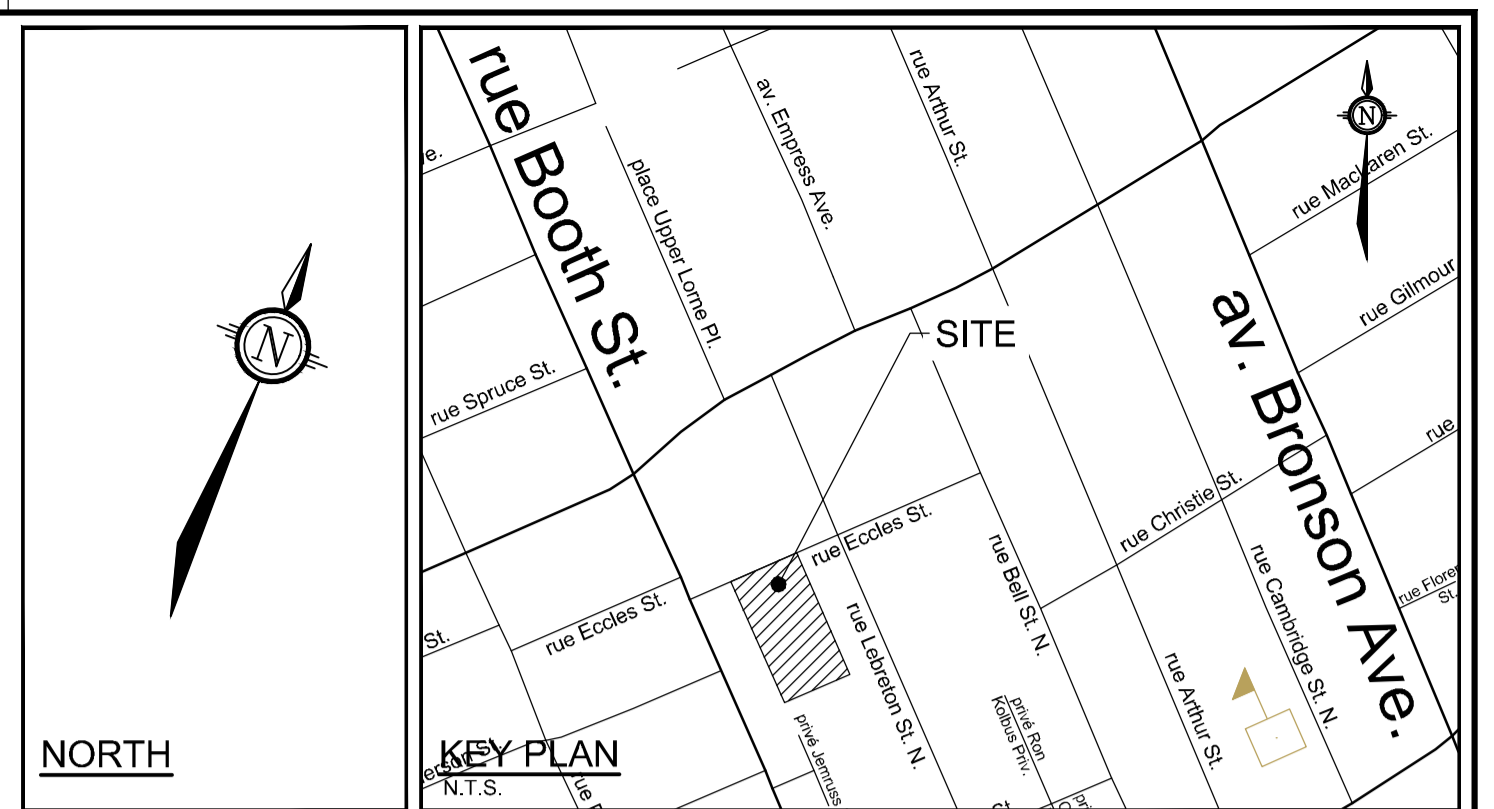
DURING SERVICING, GRADING, AND REINSTATEMENT WORKS, TIE INTO EXISTING ELEVATIONS AND ELIMINATE ENCROACHMENT INTO ADJACENT PROPERTY LANDS, WHERE POSSIBLE. PERMISSION REQUIRED FOR WORKS ON ADJACENT PROPERTY LANDS.

**NOTE:**  
 THE POSITION OF ALL POLE LINES, CONDUITS, WATERMANS, SEWERS AND OTHER UNDERGROUND AND OVERGROUND UTILITIES AND STRUCTURES IS NOT NECESSARILY SHOWN ON THE CONTRACT DRAWINGS, AND WHERE SHOWN, THE ACCURACY OF THE POSITION OF SUCH UTILITIES AND STRUCTURES IS NOT GUARANTEED. BEFORE STARTING WORK, DETERMINE THE EXACT LOCATION OF ALL SUCH UTILITIES AND STRUCTURES AND ASSUME ALL LIABILITY FOR DAMAGE TO THEM.

No.	REVISION	DATE	BY
3.	ISSUED FOR CITY REVIEW	APR 04/22	BHB
2.	REVISED PER CITY COMMENTS	MAR 29/22	BHB
1.	ISSUED FOR CITY REVIEW	FEB 02/22	BHB

**EROSION AND SEDIMENT CONTROL NOTES:**

- ALL EROSION AND SEDIMENT CONTROLS ARE TO BE INSTALLED TO THE SATISFACTION OF THE CITY OF OTTAWA AND MINISTRY OF ENVIRONMENT, CONSERVATION AND PARKS (MECP), APPROPRIATE TO THE SITE CONDITIONS, PRIOR TO UNDERTAKING ANY SITE ALTERATIONS (FILLING, GRADING, REMOVAL OF VEGETATION, ETC.) AND DURING ALL PHASES OF SITE PREPARATION AND CONSTRUCTION IN ACCORDANCE WITH THE CURRENT BEST MANAGEMENT PRACTICES FOR EROSION AND SEDIMENT CONTROL SUCH AS BUT NOT LIMITED TO INSTALLING SILTSACKS ACROSS MANHOLE/CATCHBASIN LIDS TO PREVENT SEDIMENTS FROM ENTERING STRUCTURES AND INSTALL AND MAINTAIN A LIGHT DUTY SILT FENCE BARRIER AS REQUIRED.
- TO PREVENT SURFACE EROSION FROM ENTERING THE STORM SYSTEM DURING CONSTRUCTION, SILTSACKS WILL BE PLACED UNDER ALL PROPOSED AND SURROUNDING CATCHBASINS AND MANHOLES. THE SILTSACKS WILL REMAIN IN PLACE UNTIL VEGETATION HAS BEEN ESTABLISHED AND CONSTRUCTION COMPLETE.
- CONTRACTOR IS TO INSTALL STRAW BALES AS PER OPSD 219.180 AS INDICATED AND DIRECTED BY THE ENGINEER PRIOR TO THE COMMENCEMENT OF CONSTRUCTION.
- ALL AREAS DISTURBED BY CONSTRUCTION ARE TO BE TREATED WITH IMPORTED TOPSOIL, SEED AND MULCH.
- THE CONTRACTOR ACKNOWLEDGES THAT FAILURE TO IMPLEMENT EROSION AND SEDIMENT CONTROL MEASURES MAY BE SUBJECT TO PENALTIES IMPOSED BY ANY APPLICABLE REGULATORY AGENCY.
- THE CONTRACTOR SHALL KEEP MATERIAL FOR ADDITIONAL EROSION AND SEDIMENT CONTROLS ONSITE AT ALL TIMES. THESE MATERIALS INCLUDE BUT ARE NOT LIMITED TO: SILT FENCES, STRAW BALES, SEDIMENT BAGS AND CLEAR STONE. A CONTINGENCY PLAN TO INCLUDE THE PROVISION OF ADDITIONAL LABOUR, EQUIPMENT OR MATERIALS TO INSTALL ADDITIONAL CONTROL MEASURES, AS WELL AS PROVIDE AN EMERGENCY RESPONSE PLAN IN CASE OF AN ACCIDENTAL OR RAINFALL EVENT. AS SUCH, THE CONTRACTORS SHALL HAVE ADDITIONAL CONTROL MEASURES ON SITE ALL TIMES WHICH ARE EASILY ACCESSIBLE AND MAY BE IMPLEMENTED AT A MOMENT'S NOTICE.
- MUD MATS ARE TO BE INSTALLED AND MAINTAINED AT CONSTRUCTION ACCESS POINTS TO MINIMIZE SEDIMENT TRANSFER TO EXISTING ROADWAYS (SEE MUD MAT DETAIL).
- COORDINATE ALL WORK WITH THE OWNER AND CONTRACT ADMINISTRATOR



M:\2021\121255-ESC\CAD\Design\121255-ESC.dwg, ESC, Mar 29, 2022 - 1:09pm, anickstym

D07-12-22-0024 #18671

**FOR REVIEW ONLY**

DESIGN AN  
 CHECKED BCS  
 DRAWN AN  
 CHECKED BCS  
 APPROVED BHB

**LICENCED PROFESSIONAL ENGINEER**  
 B. C. SWEET  
 100206031  
 April 4, 2022  
 PROVINCE OF ONTARIO

**NOVATECH**  
 Engineers, Planners & Landscape Architects  
 Suite 200, 240 Michael Cowpland Drive  
 Ottawa, Ontario, Canada K2M 1P6

Telephone (613) 254-9643  
 Facsimile (613) 254-5867  
 Website www.novatech-eng.com

LOCATION  
 CITY OF OTTAWA  
 44 ECCLES STREET

DRAWING NAME  
**EROSION AND SEDIMENT CONTROL PLAN**

PROJECT No.  
 121255-00

REV  
 REV # 3

DRAWING No.  
 121255-ESC