



Materials Legend:

- | | | | |
|-------------------------------------------------------------------------------------|--------------------|-------------------------------------------------------------------------------------|----------------------------|
|  | Existing Brick |  | New Glazing |
|  | Existing Masonry A |  | New Infill Panel |
|  | Existing Masonry B |  | New Prefin. Metal Cladding |

Andrew McCreight
 ANDREW MCCREIGHT
 MANAGER (A), DEVELOPMENT REVIEW CENTRAL
 PLANNING, REAL ESTATE & ECONOMIC DEVELOPMENT
 DEPARTMENT, CITY OF OTTAWA

APPROVED
 By Andrew McCreight at 2:46 pm, Sep 21, 2022

A3 CORNERSTONE ECCLES | NORTH ELEVATION

1 : 100 | 12/01/2022

CSV ARCHITECTS

sustainable design · conception écologique



Materials Legend:

- Existing Brick
- Existing Masonry A
- Existing Masonry B
- New Glazing
- New Infill Panel
- New Prefin. Metal Cladding

Andrew McCreight
 ANDREW MCCREIGHT
 MANAGER (A), DEVELOPMENT REVIEW CENTRAL
 PLANNING, REAL ESTATE & ECONOMIC DEVELOPMENT
 DEPARTMENT, CITY OF OTTAWA

APPROVED
 By Andrew McCreight at 2:46 pm, Sep 21, 2022

A4 CORNERSTONE ECCLES | SOUTH ELEVATION

1 : 100 | 12/01/2022

CSV ARCHITECTS

sustainable design · conception écologique



Materials Legend:

- | | |
|--------------------------------------------------------------------------------------------------------|----------------------------------------------------------------------------------------------------------------|
|  Existing Brick |  New Glazing |
|  Existing Masonry A |  New Infill Panel |
|  Existing Masonry B |  New Prefin. Metal Cladding |

Andrew McCreight
 ANDREW MCCREIGHT
 MANAGER (A), DEVELOPMENT REVIEW CENTRAL
 PLANNING, REAL ESTATE & ECONOMIC DEVELOPMENT
 DEPARTMENT, CITY OF OTTAWA

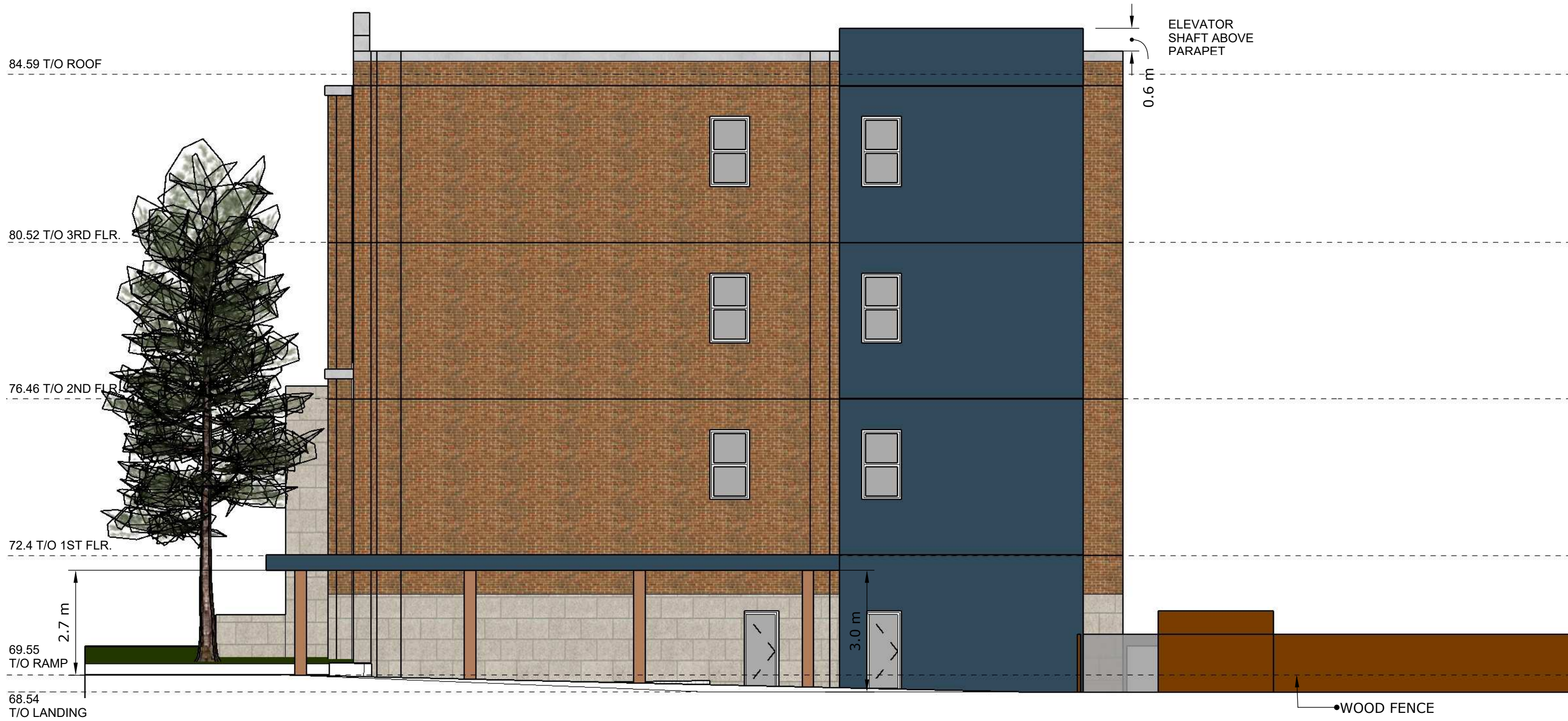
APPROVED
 By Andrew McCreight at 2:46 pm, Sep 21, 2022

A5 CORNERSTONE ECCLES | EAST ELEVATION

1 : 100 | 12/01/2022

CSV ARCHITECTS

sustainable design · conception écologique



Materials Legend:

- | | | | |
|-------------------------------------------------------------------------------------|--------------------|-------------------------------------------------------------------------------------|----------------------------|
|  | Existing Brick |  | New Glazing |
|  | Existing Masonry A |  | New Infill Panel |
|  | Existing Masonry B |  | New Prefin. Metal Cladding |

Andrew McCreight
 ANDREW MCCREIGHT
 MANAGER (A), DEVELOPMENT REVIEW CENTRAL
 PLANNING, REAL ESTATE & ECONOMIC DEVELOPMENT
 DEPARTMENT, CITY OF OTTAWA

APPROVED
 By Andrew McCreight at 2:46 pm, Sep 21, 2022

A6 CORNERSTONE ECCLES | WEST ELEVATION

1 : 100 | 12/01/2022

CSV ARCHITECTS

sustainable design · conception écologique