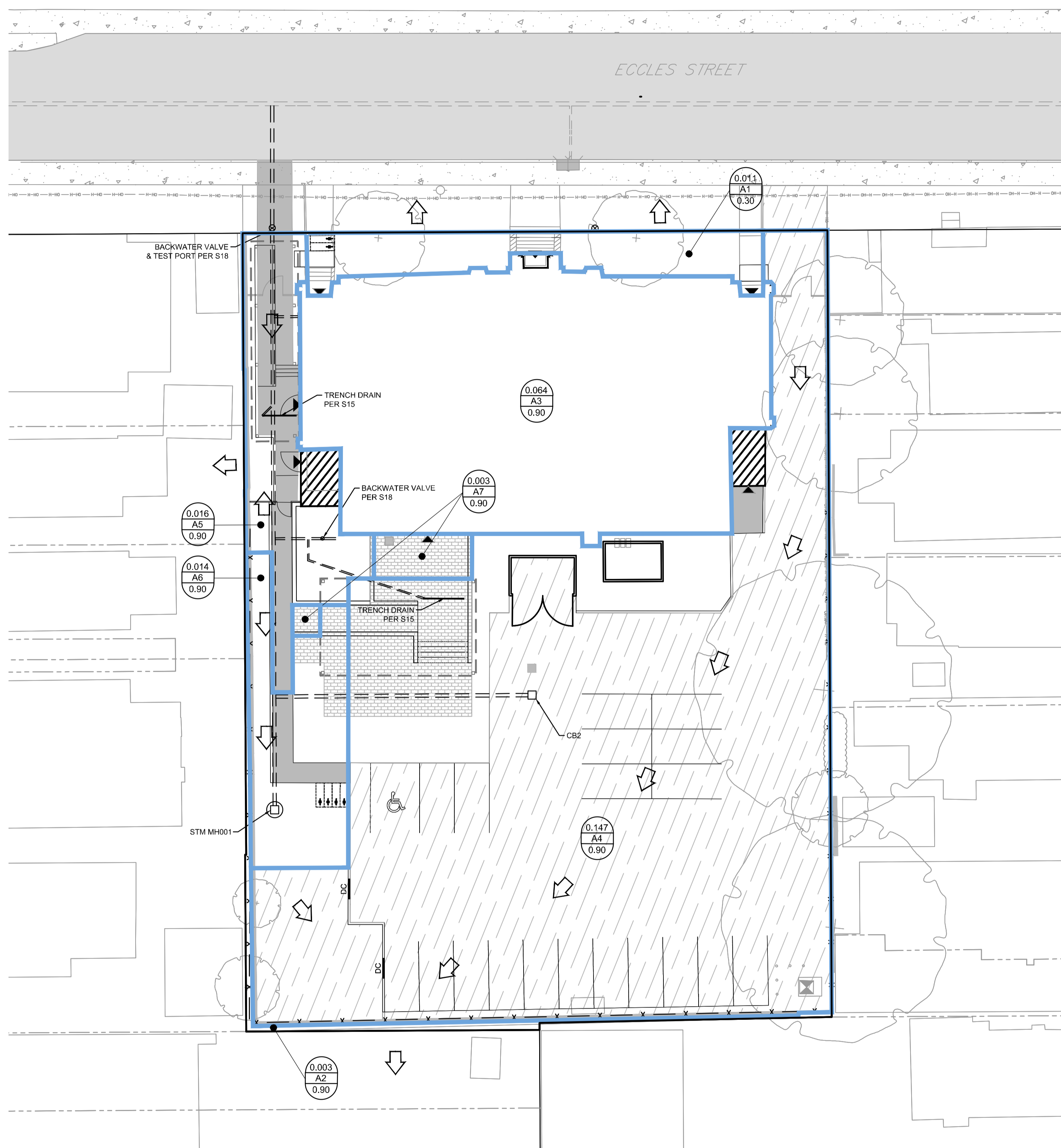
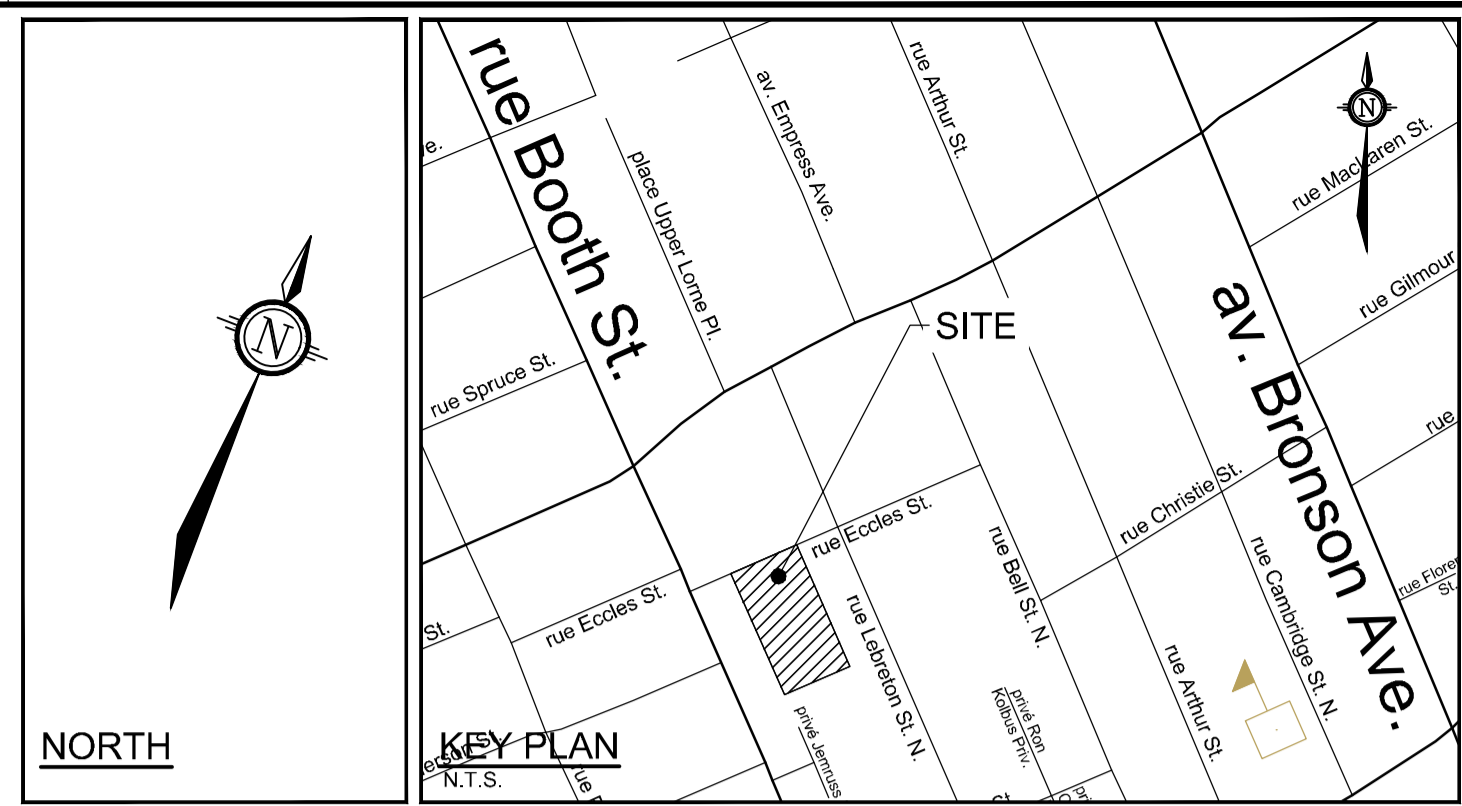


**GENERAL NOTES:**

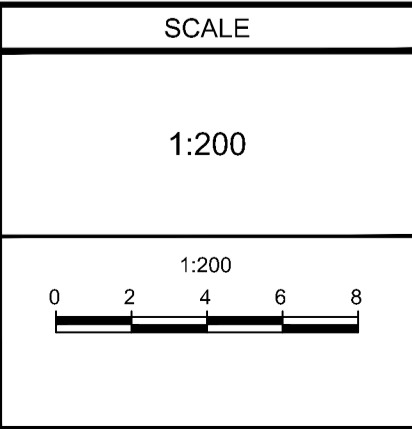
- 1) REFER TO ARCHITECT'S DRAWINGS FOR ADDITIONAL DETAILS ON THE PROPOSED BUILDING ADDITION / RETROFITS.
- 2) REFER TO LANDSCAPE ARCHITECT'S DRAWINGS FOR ADDITIONAL DETAILS ON THE HARDSCAPE AND SOFTSCAPE AREAS, AND PLANTINGS.
- 3) REFER TO THE 'SERVICING BRIEF AND STORMWATER MANAGEMENT REPORT' (R-2022-011) DATED FEBRUARY 2, 2022 PREPARED BY NOVATECH FOR ADDITIONAL DETAILS ON THE SITE SERVICING AND STORMWATER MANAGEMENT FOR THE SUBJECT SITE.



- LEGEND**
- DRAINAGE AREA BOUNDARY
  - 0.24 CATCHMENT AREA (ha)
  - A5 AREA ID
  - 0.43 RUNOFF COEFFICIENT
  - EMERGENCY OVERLAND FLOW
  - PROPOSED STORM MH & SEWER
  - LYCB ○ PROPOSED LANDSCAPE TEE CATCHBASIN & PERFORATED SUBDRAIN PER S29, S30, S31
  - LYCB ○ PROPOSED LANDSCAPE ELBOW CATCHBASIN & PERFORATED SUBDRAIN PER S29, S30, S31
  - RYCBM ○ PROPOSED REAR YARD CATCHBASIN MANHOLE & LEAD
  - RYCB □ PROPOSED REAR YARD CATCHBASIN & LEAD
  - CB □ PROPOSED ROAD CATCHBASIN

NOTE:  
THE POSITION OF ALL POLE LINES, CONDUITS, WATERMANS, SEWERS AND OTHER UNDERGROUND AND OVERGROUND UTILITIES AND STRUCTURES IS NOT NECESSARILY SHOWN ON THE CONTRACT DRAWINGS, AND WHERE SHOWN, THE ACCURACY OF THE POSITION OF SUCH UTILITIES AND STRUCTURES IS NOT GUARANTEED. BEFORE STARTING WORK, DETERMINE THE EXACT LOCATION OF ALL SUCH UTILITIES AND STRUCTURES AND ASSUME ALL LIABILITY FOR DAMAGE TO THEM.

No.	REVISION	DATE	BY
1.	ISSUED FOR CITY REVIEW	FEB 02/22	BHB



DESIGN	AN
CHECKED	BCS
DRAWN	AN
CHECKED	BCS
APPROVED	BHB

**FOR REVIEW ONLY**

**NOVATECH**  
Engineers, Planners & Landscape Architects  
Suite 200, 240 Michael Cowpland Drive  
Ottawa, Ontario, Canada K2M 1P6  
Telephone (613) 254-9643  
Facsimile (613) 254-9867  
Website www.novatech-eng.com

LOCATION CITY OF OTTAWA 44 ECCLES STREET	PROJECT No. 121255-00
DRAWING NAME STORM DRAINAGE AREA PLAN	REV REV # 1
	DRAWING No. 121255-STM

M:\2021\121255\CAD\Design\121255-STM.dwg, STM, Feb 02, 2022 - 12:27pm, bswaet

#XXXX  
XXXX-XX-XX-XXXX  
DXX-XX-XX-XXXX