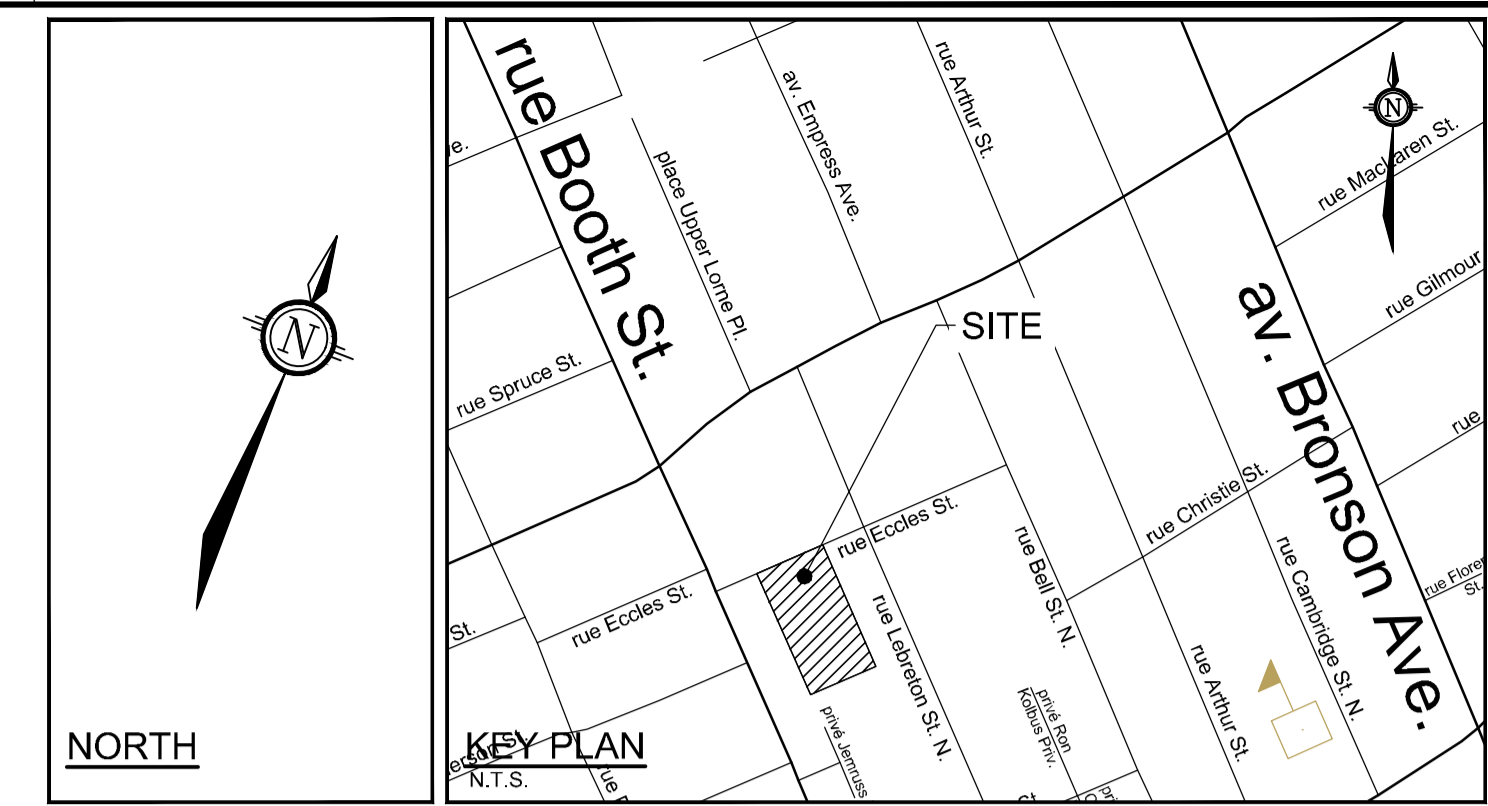


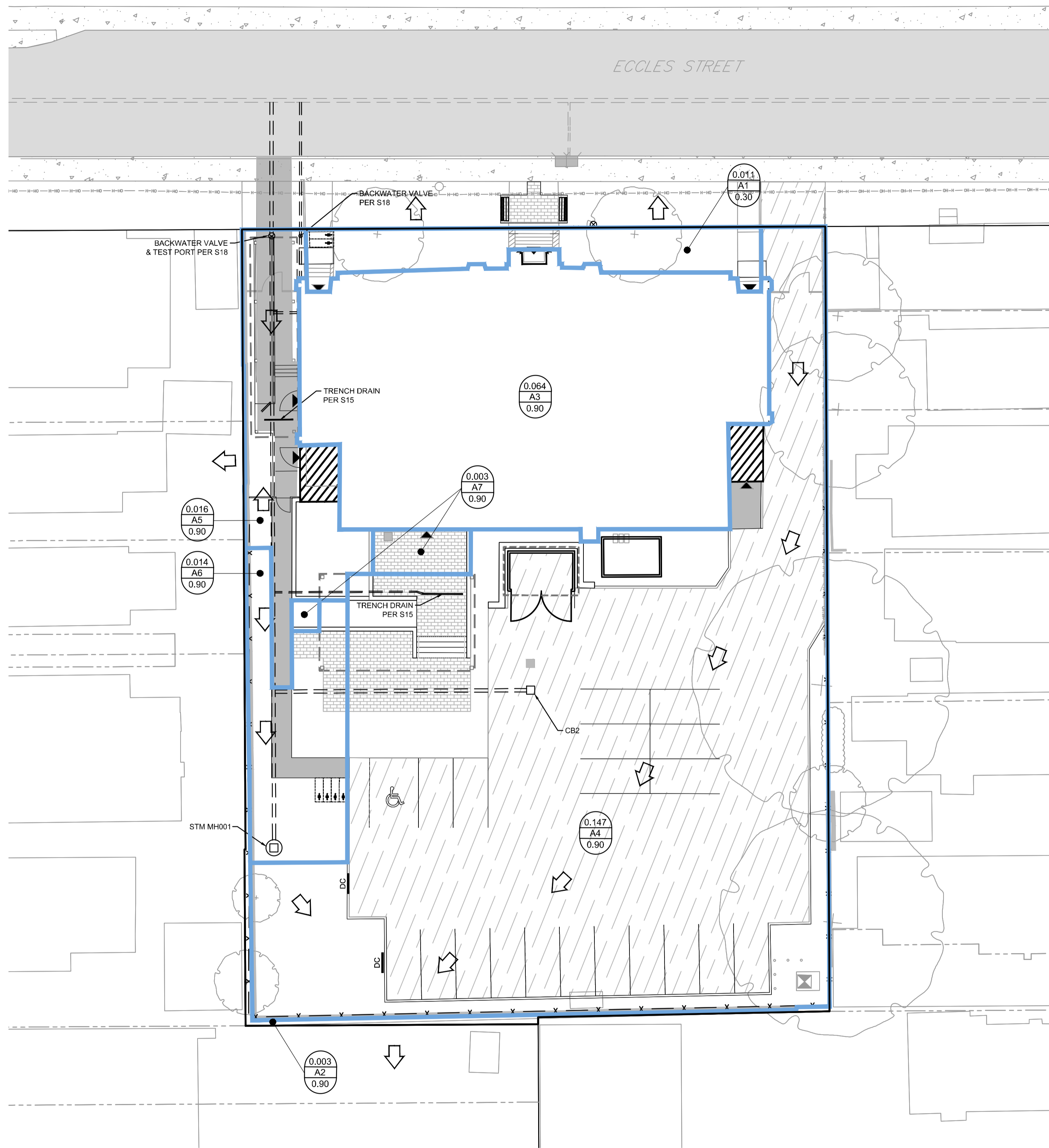
GENERAL NOTES:

- 1) REFER TO ARCHITECT'S DRAWINGS FOR ADDITIONAL DETAILS ON THE PROPOSED BUILDING ADDITION / RETROFITS.
- 2) REFER TO LANDSCAPE ARCHITECT'S DRAWINGS FOR ADDITIONAL DETAILS ON THE HARDSCAPE AND SOFTSCAPE AREAS, AND PLANTINGS.
- 3) REFER TO THE 'SERVICING BRIEF AND STORMWATER MANAGEMENT REPORT' (R-2022-011) DATED FEBRUARY 2, 2022 PREPARED BY NOVATECH FOR ADDITIONAL DETAILS ON THE SITE SERVICING AND STORMWATER MANAGEMENT FOR THE SUBJECT SITE.



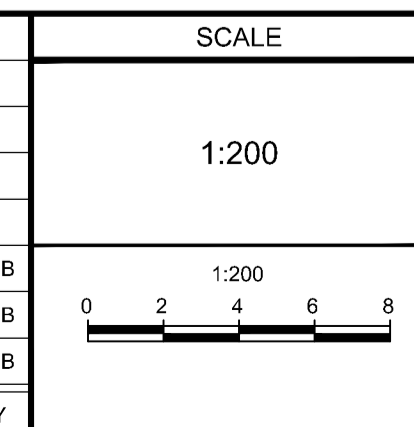
LEGEND

- DRAINAGE AREA BOUNDARY
- CATCHMENT AREA (ha)
AREA ID
RUNOFF COEFFICIENT
- EMERGENCY OVERLAND FLOW
- PROPOSED STORM MH & SEWER
- LYCB PROPOSED LANDSCAPE TEE CATCHBASIN & PERFORATED SUBDRAIN PER S29, S30, S31
- LYCB PROPOSED LANDSCAPE ELBOW CATCHBASIN & PERFORATED SUBDRAIN PER S29, S30, S31
- RYCBM PROPOSED REAR YARD CATCHBASIN MANHOLE & LEAD
- RYCB PROPOSED REAR YARD CATCHBASIN & LEAD
- CB PROPOSED ROAD CATCHBASIN



NOTE:
THE POSITION OF ALL POLE LINES, CONDUITS, WATERMANS, SEWERS AND OTHER UNDERGROUND AND OVERGROUND UTILITIES AND STRUCTURES IS NOT NECESSARILY SHOWN ON THE CONTRACT DRAWINGS, AND WHERE SHOWN, THE ACCURACY OF THE POSITION OF SUCH UTILITIES AND STRUCTURES IS NOT GUARANTEED. BEFORE STARTING WORK, DETERMINE THE EXACT LOCATION OF ALL SUCH UTILITIES AND STRUCTURES AND ASSUME ALL LIABILITY FOR DAMAGE TO THEM.

No.	REVISION	DATE	BY
3.	ISSUED FOR CITY REVIEW	APR 04/22	BHB
2.	REVISED PER CITY COMMENTS	MAR 29/22	BHB
1.	ISSUED FOR CITY REVIEW	FEB 02/22	BHB



DESIGN	AN
CHECKED	BCS
DRAWN	AN
CHECKED	BCS
APPROVED	BHB

FOR REVIEW ONLY

NOVATECH
Engineers, Planners & Landscape Architects
Suite 200, 240 Michael Cowpland Drive
Ottawa, Ontario, Canada K2M 1P6

Telephone (613) 254-9643
Facsimile (613) 254-9867
Website www.novatech-eng.com

LOCATION CITY OF OTTAWA 44 ECCLES STREET	PROJECT No. 121255-00
DRAWING NAME STORM DRAINAGE AREA PLAN	REV # 3
	DRAWING No. 121255-STM

M:\2021\121255\CAD\Design\121255-STM.dwg, STM, Mar 29, 2022 - 9:20am, bowest

D07-12-22-0024 #18671