



LEGEND

- MS-1 PREFINISHED VERTICAL METAL SIDING TYPE 1- IDEAL ROOFING HERITAGE SERIES- REGENT GRAY
- MS-2 PREFINISHED VERTICAL METAL SIDING TYPE 2- IDEAL ROOFING HERITAGE SERIES- BLACK MICA
- MF-1 PREFINISHED METAL FLASHING TYPE 1- TO MATCH REGENT GRAY
- MF-2 PREFINISHED METAL FLASHING TYPE 2- TO MATCH BLACK MICA
- HP-1 HARDIE PANEL MAGNOLIA COLLECTION- COLOUR: MIDNIGHT SOOT
- BV-1 BRICK VENEER TYPE 1- BELDEN BRICK - AMHERST BLEND DART-TEX
- BSC-1 BRICK SOLIDER COURSE TYPE 1 - BELDEN BRICK - AMHERST BLEND DART-TEX
- BLV-1 BLOCK VENEER- TYPE 1 BRAMPTON BRICK - FINESSSE MINERAL GRAY, SAUVE
- PC-1 PRECAST CONCRETE SILL BRAMPTON BRICK - FINESSSE MINERAL GRAY, SAUVE
- PC-2 PRECAST CONCRETE CAP BRAMPTON BRICK - FINESSSE MINERAL GRAY, SAUVE
- CP CEMENT PARING
- W1 WINDOW TYPE
- D1 EXTERIOR DOOR TYPE
- DEMOTES OPERABLE WINDOW
- SC OVERFLOW SCUPPER SEE ROOF PLAN
- CJ MASONRY CONTROL JOINT
- LF LIGHT FIXTURE - REFER TO ELEC
- GR CUSTOM POWDER COATED STEEL GUARD FRAME & PERFORATED STEEL SCREEN
- SO-1 PRE-FINISHED METAL SOFFIT c/w VENT STRIPS. COLOUR TO MATCH FASCIA.
- SO-2 CLEAR CEDAR SOFFIT c/w VENT STRIPS. CUTEK STAIN FINISH. COLOUR TBD.

GENERAL NOTES:

- REFER TO CIVIL DRAWINGS FOR GRADING ELEVATIONS
- REFER TO SPEC SECTION 09 00 02 EXTERIOR FINISHES COLOR LEGEND FOR FULL MATERIALS DESCRIPTION

no.	date	revision
14	2024-03-29	ISSUED ELEVATIONS FOR DARK SUBMISSION
13	2024-03-28	ISSUED RESPONSES TO CITY COMMENTS DATED (24.02.28)
12	2024-02-06	ISSUED RESPONSES TO CITY COMMENTS DATED (23.12.22)
11	2024-01-17	RE-ISSUED FOR SITE PLAN APPROVAL
10	2024-01-05	ISSUED FOR SITE PLAN APPROVAL
9	2023-12-22	ISSUED FOR TENDER
8	2023-12-12	ISSUED ZONING DEFICIENCY RESPONSE
7	2023-12-08	ISSUED FOR TENDER COORDINATION
6	2023-11-09	ISSUED FOR BUILDING PERMIT
5	2023-09-14	ISSUED TO LIGHTING CONSULTANT
4	2023-09-11	ISSUED FOR CONSULTANT COORDINATION
3	2023-07-13	RE-LABELLING FOR exp
2	2023-06-28	RE-ISSUED FOR ENERGY MODELING
1	2023-06-23	ISSUED FOR ENERGY MODELING

It is the responsibility of the appropriate contractor to check and verify all dimensions on site and report all errors and/or omissions to the architect.

All contractors must comply with all pertinent codes and by-laws.

Do not scale drawings.

This drawing may not be used for construction until signed.

Copyright reserved.

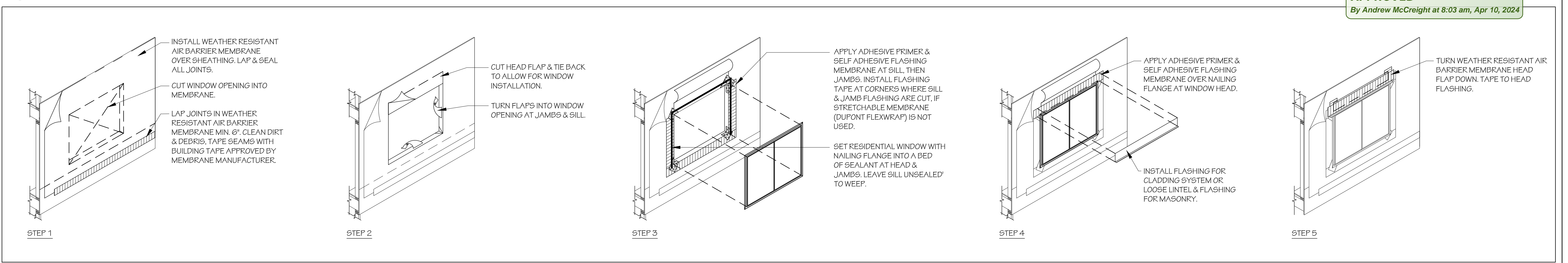
Andrew McCreight

ANDREW MCCREIGHT
MANAGER, DEVELOPMENT REVIEW CENTRAL
PLANNING, REAL ESTATE & ECONOMIC DEVELOPMENT
DEPARTMENT, CITY OF OTTAWA

APPROVED
By Andrew McCreight at 8:03 am, Apr 10, 2024



1 SOUTH ELEVATION
SCALE: 1/4"=1'-0"



2 TYPICAL WINDOW PENETRATION FLASHING INSULATION DETAIL
SCALE: N.T.S.

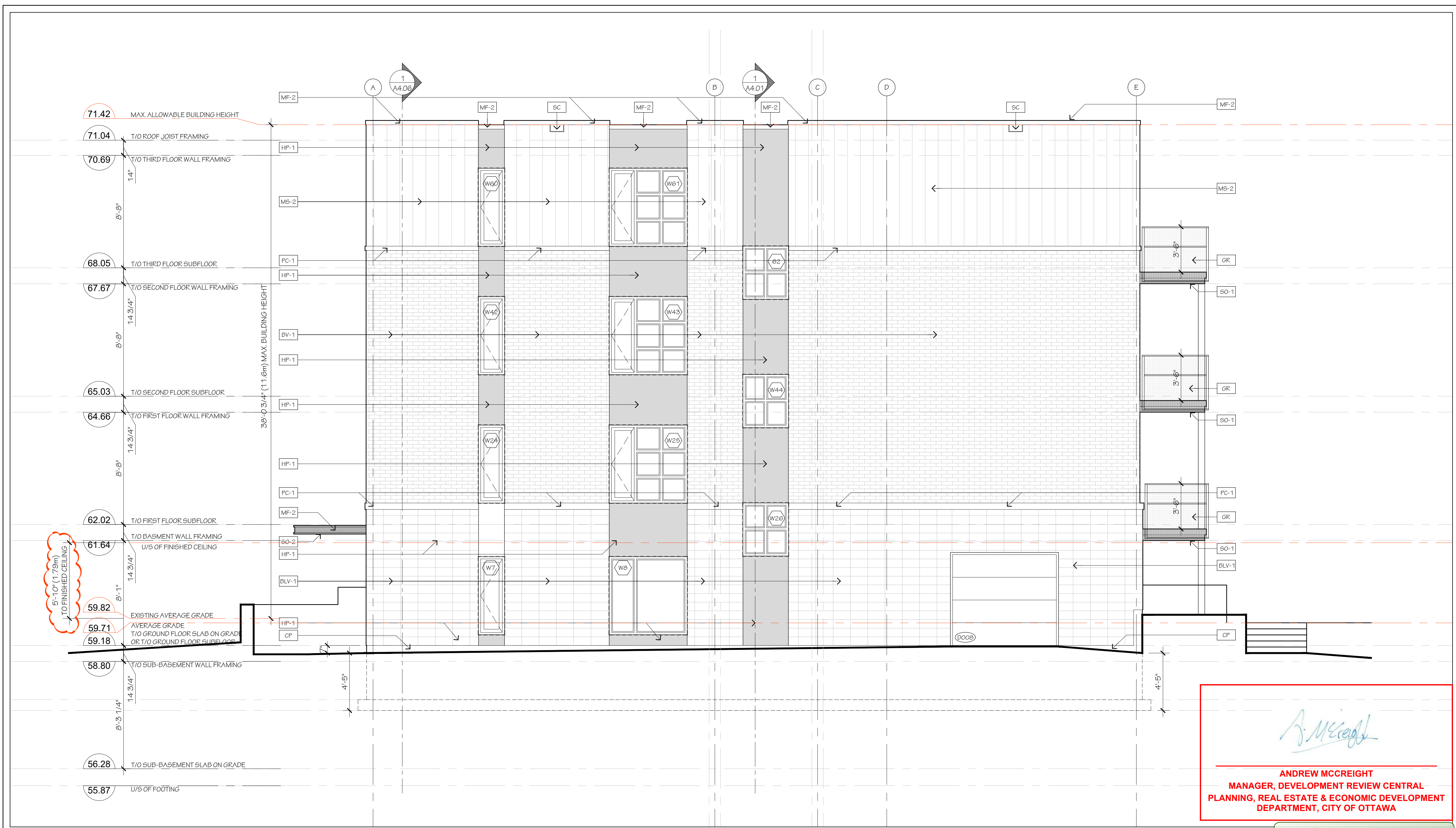
project title
LARCH APARTMENTS
15 LARCH ST, OTTAWA, ONTARIO

drawing title
FRONT ELEVATION

drawn SC	date JUNE 2023	scale AS NOTED
project 2024		drawing no. A3.01
project 2024		revision no.

ONTARIO ASSOCIATION OF ARCHITECTS
LARRY J. HOBIN
LICENCE 3049

D07-12-22-0027



LEGEND

- MS-1 PREFINISHED VERTICAL METAL SIDING TYPE 1 - IDEAL ROOFING HERITAGE SERIES - REGENT GRAY
- MS-2 PREFINISHED VERTICAL METAL SIDING TYPE 2 - IDEAL ROOFING HERITAGE SERIES - BLACK MICA
- MF-1 PREFINISHED METAL FLASHING TYPE 1 - TO MATCH REGENT GRAY
- MF-2 PREFINISHED METAL FLASHING TYPE 2 - TO MATCH BLACK MICA
- HP-1 HARDIE PANEL MAGNOLIA COLLECTION - COLOUR: MIDNIGHT SOOT
- BV-1 BRICK VENEER TYPE 1 - BELDEN BRICK - AMHERST BLEND DART-TEX
- BSC-1 BRICK SOLIDER COURSE TYPE 1 - BELDEN BRICK - AMHERST BLEND DART-TEX
- BLV-1 BLOCK VENEER TYPE 1 BRAMPTON BRICK - FINESSE MINERAL GRAY, SAUVE
- PC-1 PRECAST CONCRETE SILL BRAMPTON BRICK - FINESSE MINERAL GRAY, SAUVE
- PC-2 PRECAST CONCRETE CAP BRAMPTON BRICK - FINESSE MINERAL GRAY, SAUVE
- CP CEMENT PARING
- W1 WINDOW TYPE
- D1 EXTERIOR DOOR TYPE
- Denotes OPERABLE WINDOW
- SC OVER FLOW SCUPPER SEE ROOF PLAN
- CJ MASONRY CONTROL JOINT
- LF LIGHT FIXTURE - REFER TO ELEC
- GR CUSTOM POWDER COATED STEEL GUARD FRAME & PERFORATED STEEL SCREEN
- SO-1 PRE-FINISHED METAL SOFFIT c/w VENT STRIPS. COLOUR TO MATCH FASCIA.
- SO-2 CLEAR CEDAR SOFFIT c/w VENT STRIPS. CUTEK STAIN FINISH. COLOUR TBD.

GENERAL NOTES:

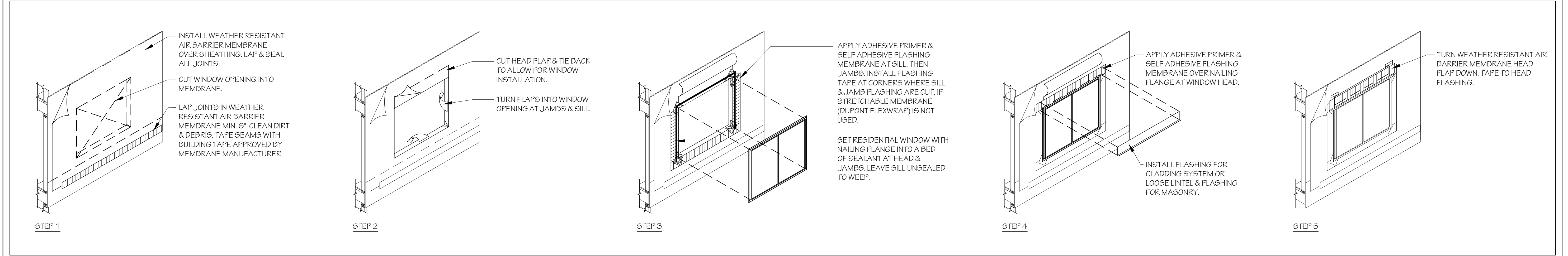
- REFER TO CIVIL DRAWINGS FOR GRADING ELEVATIONS
- REFER TO SPEC SECTION 09 00 02 EXTERIOR FINISHES COLOR LEGEND FOR FULL MATERIALS DESCRIPTION

no.	date	revision
14	2024-03-29	ISSUED ELEVATIONS FOR DARK SUBMISSION
13	2024-03-28	ISSUED RESPONSES TO CITY COMMENTS DATED (24.02.28)
12	2024-02-06	ISSUED RESPONSES TO CITY COMMENTS DATED (23.12.22)
11	2024-01-17	RE-ISSUED FOR SITE PLAN APPROVAL
10	2024-01-05	ISSUED FOR SITE PLAN APPROVAL
9	2023-12-22	ISSUED FOR TENDER
8	2023-12-12	ISSUED ZONING DEFICIENCY RESPONSE
7	2023-12-08	ISSUED FOR TENDER COORDINATION
6	2023-11-09	ISSUED FOR BUILDING PERMIT
5	2023-09-14	ISSUED TO LIGHTING CONSULTANT
4	2023-09-11	ISSUED FOR CONSULTANT COORDINATION
3	2023-07-13	RE-LABELLING FOR exp
2	2023-06-28	RE-ISSUED FOR ENERGY MODELING
1	2023-06-23	ISSUED FOR ENERGY MODELING


ANDREW MCCREIGHT
 MANAGER, DEVELOPMENT REVIEW CENTRAL
 PLANNING, REAL ESTATE & ECONOMIC DEVELOPMENT
 DEPARTMENT, CITY OF OTTAWA

APPROVED
 By Andrew McCreight at 8:03 am, Apr 10, 2024

1 EAST ELEVATION
SCALE: 1/4"=1'-0"



2 TYPICAL WINDOW PENETRATION FLASHING INSULATION DETAIL
SCALE: N.T.S.

no.	date	revision
14	2024-03-29	ISSUED ELEVATIONS FOR DARK SUBMISSION
13	2024-03-28	ISSUED RESPONSES TO CITY COMMENTS DATED (24.02.28)
12	2024-02-06	ISSUED RESPONSES TO CITY COMMENTS DATED (23.12.22)
11	2024-01-17	RE-ISSUED FOR SITE PLAN APPROVAL
10	2024-01-05	ISSUED FOR SITE PLAN APPROVAL
9	2023-12-22	ISSUED FOR TENDER
8	2023-12-12	ISSUED ZONING DEFICIENCY RESPONSE
7	2023-12-08	ISSUED FOR TENDER COORDINATION
6	2023-11-09	ISSUED FOR BUILDING PERMIT
5	2023-09-14	ISSUED TO LIGHTING CONSULTANT
4	2023-09-11	ISSUED FOR CONSULTANT COORDINATION
3	2023-07-13	RE-LABELLING FOR exp
2	2023-06-28	RE-ISSUED FOR ENERGY MODELING
1	2023-06-23	ISSUED FOR ENERGY MODELING

no. date revision

It is the responsibility of the appropriate contractor to check and verify all dimensions on site and report all errors and/or omissions to the architect.

All contractors must comply with all pertinent codes and by-laws.

Do not scale drawings.

This drawing may not be used for construction until signed.

Copyright reserved.



project title
LARCH APARTMENTS
15 LARCH ST. OTTAWA, ONTARIO

drawing title
RIGHT-SIDE ELEVATION

drawn	date	scale
SC	JUNE 2023	AS NOTED

project
2024

drawing no.
A3.02

revision no.



D07-12-22-0027



LEGEND

- MS-1 PREFINISHED VERTICAL METAL SIDING TYPE 1 - IDEAL ROOFING HERITAGE SERIES - REGENT GRAY
- MS-2 PREFINISHED VERTICAL METAL SIDING TYPE 2 - IDEAL ROOFING HERITAGE SERIES - BLACK MICA
- MF-1 PREFINISHED METAL FLASHING TYPE 1 - TO MATCH REGENT GRAY
- MF-2 PREFINISHED METAL FLASHING TYPE 2 - TO MATCH BLACK MICA
- HP-1 HARDIE PANEL MAGNOLIA COLLECTION - COLOUR: MIDNIGHT SOOT
- BV-1 BRICK VENEER TYPE 1 - BELDEN BRICK - AMHERST BLEND DART-TEX
- BSC-1 BRICK SOLIDER COURSE TYPE 1 - BELDEN BRICK - AMHERST BLEND DART-TEX
- BLV-1 BLOCK VENEER TYPE 1 BRAMPTON BRICK - FINESSE MINERAL GRAY, SAUVE
- PC-1 PRECAST CONCRETE SILL BRAMPTON BRICK - FINESSE MINERAL GRAY, SAUVE
- PC-2 PRECAST CONCRETE CAP BRAMPTON BRICK - FINESSE MINERAL GRAY, SAUVE
- CP CEMENT PARING
- W1 WINDOW TYPE
- D1 EXTERIOR DOOR TYPE
- OW DENOTES OPERABLE WINDOW
- SC OVER FLOW SCUPPER SEE ROOF PLAN
- CJ MASONRY CONTROL JOINT
- LF LIGHT FIXTURE - REFER TO ELEC
- GR CUSTOM POWDER COATED STEEL GUARD FRAME & PERFORATED STEEL SCREEN
- SO-1 PRE-FINISHED METAL SOFFIT c/w VENT STRIPS, COLOUR TO MATCH FASCIA.
- SO-2 CLEAR CEDAR SOFFIT c/w VENT STRIPS, CUTEK STAIN FINISH, COLOUR TBD.

GENERAL NOTES:

- REFER TO CIVIL DRAWINGS FOR GRADING ELEVATIONS
- REFER TO SPEC SECTION 09 00 02 EXTERIOR FINISHES COLOR LEGEND FOR FULL MATERIALS DESCRIPTION

no.	date	revision
14	2024-03-29	ISSUED ELEVATIONS FOR DARK SUBMISSION
13	2024-03-28	ISSUED RESPONSES TO CITY COMMENTS DATED (24.02.28)
12	2024-02-06	ISSUED RESPONSES TO CITY COMMENTS DATED (23.12.22)
11	2024-01-17	RE-ISSUED FOR SITE PLAN APPROVAL
10	2024-01-05	ISSUED FOR SITE PLAN APPROVAL
9	2023-12-22	ISSUED FOR TENDER
8	2023-12-12	ISSUED ZONING DEFICIENCY RESPONSE
7	2023-12-08	ISSUED FOR TENDER COORDINATION
6	2023-11-09	ISSUED FOR BUILDING PERMIT ELEVATIONS
5	2023-09-14	ISSUED TO LIGHTING CONSULTANT
4	2023-09-11	ISSUED FOR CONSULTANT COORDINATION
3	2023-07-13	RE-LABELLING FOR exp
2	2023-06-28	RE-ISSUED FOR ENERGY MODELING
1	2023-06-23	ISSUED FOR ENERGY MODELING


It is the responsibility of the appropriate contractor to check and verify all dimensions on site and report all errors and/or omissions to the architect.

All contractors must comply with all pertinent codes and by-laws.



Do not scale drawings.

This drawing may not be used for construction until signed.

Copyright reserved.



ANDREW MCCREIGHT
MANAGER, DEVELOPMENT REVIEW CENTRAL
PLANNING, REAL ESTATE & ECONOMIC DEVELOPMENT
DEPARTMENT, CITY OF OTTAWA

Hobin Architecture Incorporated
63 Pamela Street
Ottawa, Ontario
Canada K1S 3K7
T: 613 238-7200
E: email@hobinarc.com
hobinarc.com

project title
LARCH APARTMENTS
15 LARCH ST. OTTAWA, ONTARIO

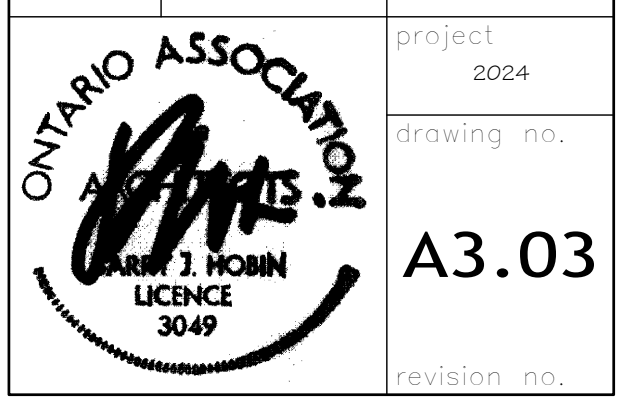
drawing title
REAR ELEVATION

drawn	date	scale
SC	JUNE 2023	AS NOTED

project	year
LARCH APARTMENTS	2024

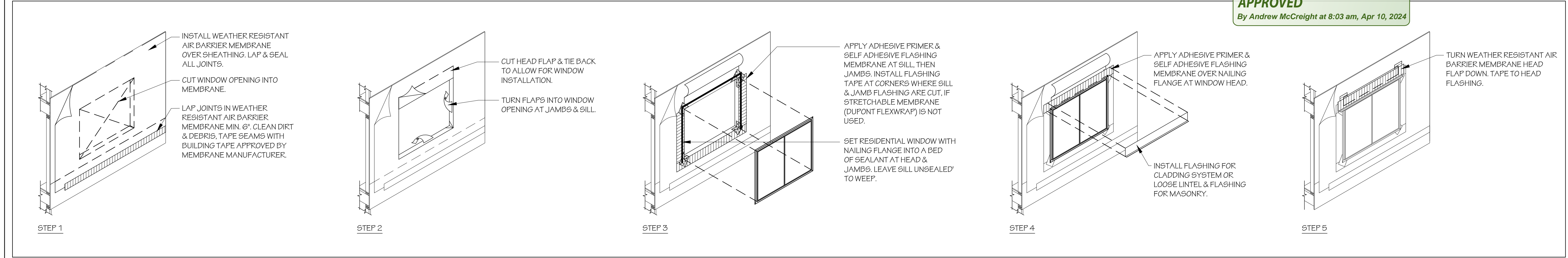
drawing no.
A3.03

revision no.



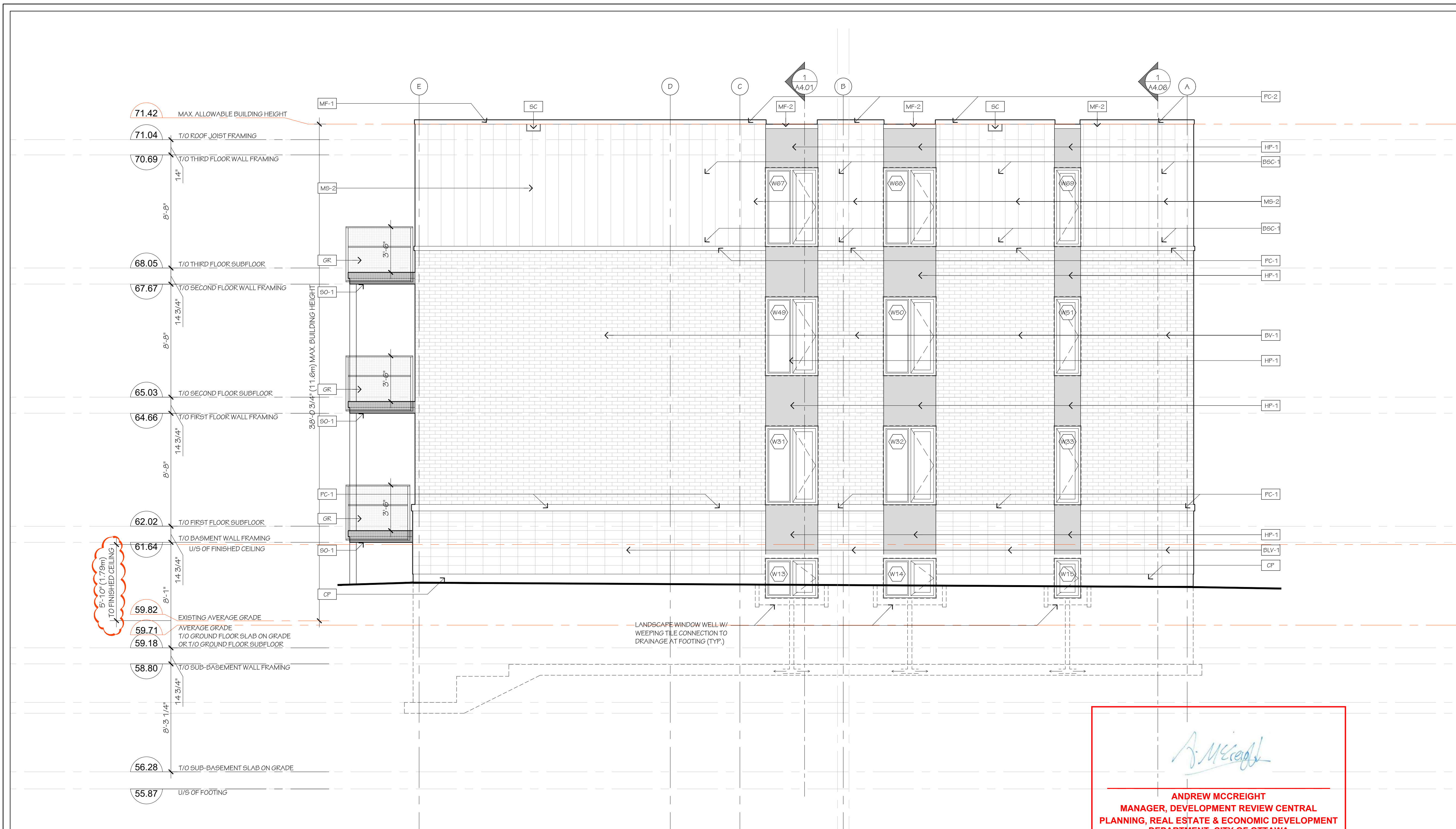
APPROVED
By Andrew McCreight at 8:03 am, Apr 10, 2024

1 NORTH ELEVATION
SCALE: 1/4"=1'-0"



2 TYPICAL WINDOW PENETRATION FLASHING INSULATION DETAIL
SCALE: N.T.S.

D07-12-22-0027



LEGEND

- MS-1 PREFINISHED VERTICAL METAL SIDING TYPE 1 - IDEAL ROOFING HERITAGE SERIES - REGENT GRAY
- MS-2 PREFINISHED VERTICAL METAL SIDING TYPE 2 - IDEAL ROOFING HERITAGE SERIES - BLACK MICA
- MF-1 PREFINISHED METAL FLASHING TYPE 1 - TO MATCH REGENT GRAY
- MF-2 PREFINISHED METAL FLASHING TYPE 2 - TO MATCH BLACK MICA
- HP-1 HARDIE PANEL MAGNOLIA COLLECTION - COLOUR: MIDNIGHT SOOT
- BV-1 BRICK VENEER TYPE 1 - BELDEN BRICK - AMHERST BLEND DART-TEX
- BSC-1 BRICK SOLIDER COURSE TYPE 1 - BELDEN BRICK - AMHERST BLEND DART-TEX
- BLV-1 BLOCK VENEER TYPE 1 BRAMPTON BRICK - FINESSE MINERAL GRAY, SAUVE
- PC-1 PRECAST CONCRETE SILL BRAMPTON BRICK - FINESSE MINERAL GRAY, SAUVE
- PC-2 PRECAST CONCRETE CAP BRAMPTON BRICK - FINESSE MINERAL GRAY, SAUVE
- CP CEMENT PARING
- W1 WINDOW TYPE
- D1 EXTERIOR DOOR TYPE
- Denotes OPERABLE WINDOW
- SC OVERFLOW SCUPPER SEE ROOF PLAN
- CJ MASONRY CONTROL JOINT
- LF LIGHT FIXTURE - REFER TO ELEC
- GR CUSTOM POWDER COATED STEEL GUARD FRAME & PERFORATED STEEL SCREEN
- SO-1 PRE-FINISHED METAL SOFFIT c/w VENT STRIPS, COLOUR TO MATCH FASCIA.
- SO-2 CLEAR CEDAR SOFFIT c/w VENT STRIPS, CUTEK STAIN FINISH, COLOUR TBD.

GENERAL NOTES:

- REFER TO CIVIL DRAWINGS FOR GRADING ELEVATIONS
- REFER TO SPEC SECTION 09 02 02 EXTERIOR FINISHES COLOR LEGEND FOR FULL MATERIALS DESCRIPTION

no.	date	revision
14	2024-03-29	ISSUED ELEVATIONS FOR DARK SUBMISSION
13	2024-03-28	ISSUED RESPONSES TO CITY COMMENTS DATED (24.02.28)
12	2024-02-06	ISSUED RESPONSES TO CITY COMMENTS DATED (23.12.22)
11	2024-01-17	RE-ISSUED FOR SITE PLAN APPROVAL
10	2024-01-05	ISSUED FOR SITE PLAN APPROVAL
9	2023-12-22	ISSUED FOR TENDER
8	2023-12-12	ISSUED ZONING DEFICIENCY RESPONSE
7	2023-12-08	ISSUED FOR TENDER COORDINATION
6	2023-11-09	ISSUED FOR BUILDING PERMIT
5	2023-09-14	ISSUED TO LIGHTING CONSULTANT
4	2023-09-11	ISSUED FOR CONSULTANT COORDINATION
3	2023-07-13	RE-LABELLING FOR exp
2	2023-06-28	RE-ISSUED FOR ENERGY MODELING
1	2023-06-23	ISSUED FOR ENERGY MODELING

It is the responsibility of the appropriate contractor to check and verify all dimensions on site and report all errors and/or omissions to the architect.

All contractors must comply with all pertinent codes and by-laws.

Do not scale drawings.

This drawing may not be used for construction until signed.

Copyright reserved.

Hobin Architecture Incorporated
 63 Pamela Street
 Ottawa, Ontario
 Canada K1S3K7
 T: 613-238-7200
 F: 613-238-2005
 E: mail@hobin.com
 hobin.com

project title
LARCH APARTMENTS
15 LARCH ST. OTTAWA, ONTARIO

drawing title
LEFT-SIDE ELEVATION

drawn	date	scale
SC	JUNE 2023	AS NOTED

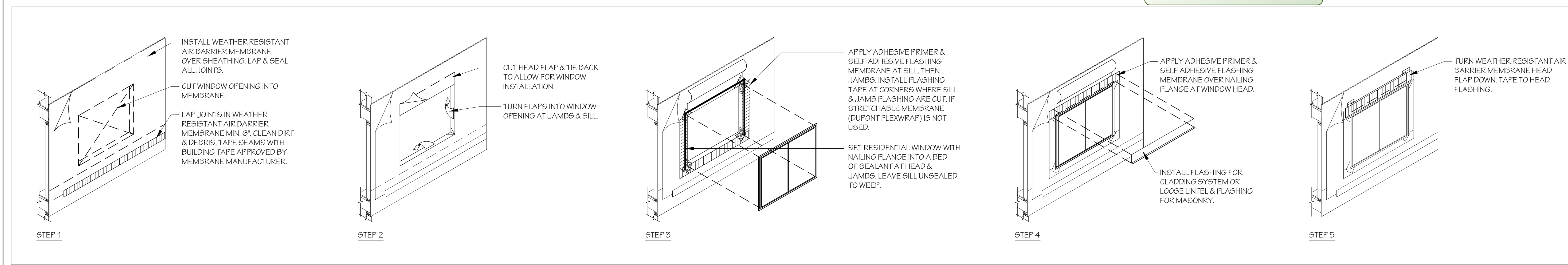
project
2024

drawing no.
A3.04

revision no.

APPROVED
 By Andrew McCreight at 8:03 am, Apr 10, 2024

1 WEST ELEVATION
 SCALE: 1/4"=1'-0"



2 TYPICAL WINDOW PENETRATION FLASHING INSULATION DETAIL
 SCALE: N.T.S.

project title
LARCH APARTMENTS
15 LARCH ST. OTTAWA, ONTARIO

drawing title
LEFT-SIDE ELEVATION

drawn	date	scale
SC	JUNE 2023	AS NOTED

project
2024

drawing no.
A3.04

revision no.

APPROVED
 By Andrew McCreight at 8:03 am, Apr 10, 2024

D07-12-22-0027