

TREE PROTECTION

- Implement the following protection measures for retained trees, both on site and on adjacent sites, prior to any work activity, including tree removal. Maintain tree protection fence in place and in good condition for the duration of site works:
- The Landscape Architect or Certified Arborist is to determine the location of the tree protection fencing and detail it on any associated plans for the site (e.g. tree conservation report, tree disclosure report, etc.).
 - Under the guidance of a Landscape Architect or Certified Arborist, erect a fence at the critical root zone (CRZ) of trees. Diameter at breast height (DBH) is the trunk diameter measured at 1.3m height on the tree trunk. The CRZ is calculated as DBH x 10. Refer to the Tree Protection Fence detail.
 - Refer to the Tree Protection Plan for fence location.
 - Do not place any material or equipment within 2m of the CRZ of any tree, including outhouses.
 - Do not attach any signs, notices, or posters to any tree.
 - Do not disturb, raise, or lower the existing grade within the CRZ without approval.
 - Only tunnel or bore when digging within the CRZ of a tree. Hand work only where required within the CRZ; absolutely no machinery permitted.
 - Do not damage the root system, trunk, or branches, or any tree.
 - Do not extend hard surface or significantly change landscaping.
 - Ensure that exhaust fumes from all equipment are directed away from any tree canopy.
 - When trees marked for removal overlap with the CRZ of trees marked for preservation: cut roots at the edge of the CRZ and grind down stumps after tree removals, do not pull out stumps. Ensure there is no root pulling or disturbance of the ground within the CRZ.
 - Prior to work taking place, notify and consult the Landscape Architect if roots must be cut. Roots 20mm or larger should be cut at right angles with clean, sharp horticultural tools without tearing, crushing, or pulling.
 - If damaged or objectionable branches are observed, consult the Landscape Architect, before any work is conducted. Do not prune leaders. Do not prune more than 1/4 of crown.
 - Set up a water and fertilizing program, if trees are being affected by site works, to the satisfaction of the Landscape Architect.
 - The Landscape Architect is to prescribe mitigation measures if the protected fenced area must be reduced to facilitate construction. Measures may include the placement of plywood, wood chips, or steel plating over the roots for protection.

GENERAL

- Read and interpret this drawing/ drawing set in conjunction with all the contract details and specifications, including related civil, utility, structural, architectural, mechanical, electrical, environmental, geotechnical, and survey information.
- The Contractor is to determine the exact location, size, material, and elevation of all existing utilities prior to commencing construction. Protect and assume responsibility for all existing utilities regardless of being shown on the drawings.
- It is essential to use the plans and details in conjunction with the specifications and notes.
- Do not scale drawings. Work to dimensions only.
- Protect all existing and retained vegetation for the duration of construction according to the contract details and specifications.
- Reinstate all areas and items damaged or disturbed, beyond the Limit of Work, because of construction activities, including but not limited to construction staging areas, haul roads, stockpile areas, etc. to the satisfaction of the Consultant. Unless otherwise noted, Contractor is to reinstate all areas to pre-construction condition or better to the satisfaction of the Contract Administrator.

EXISTING TREE INVENTORY:

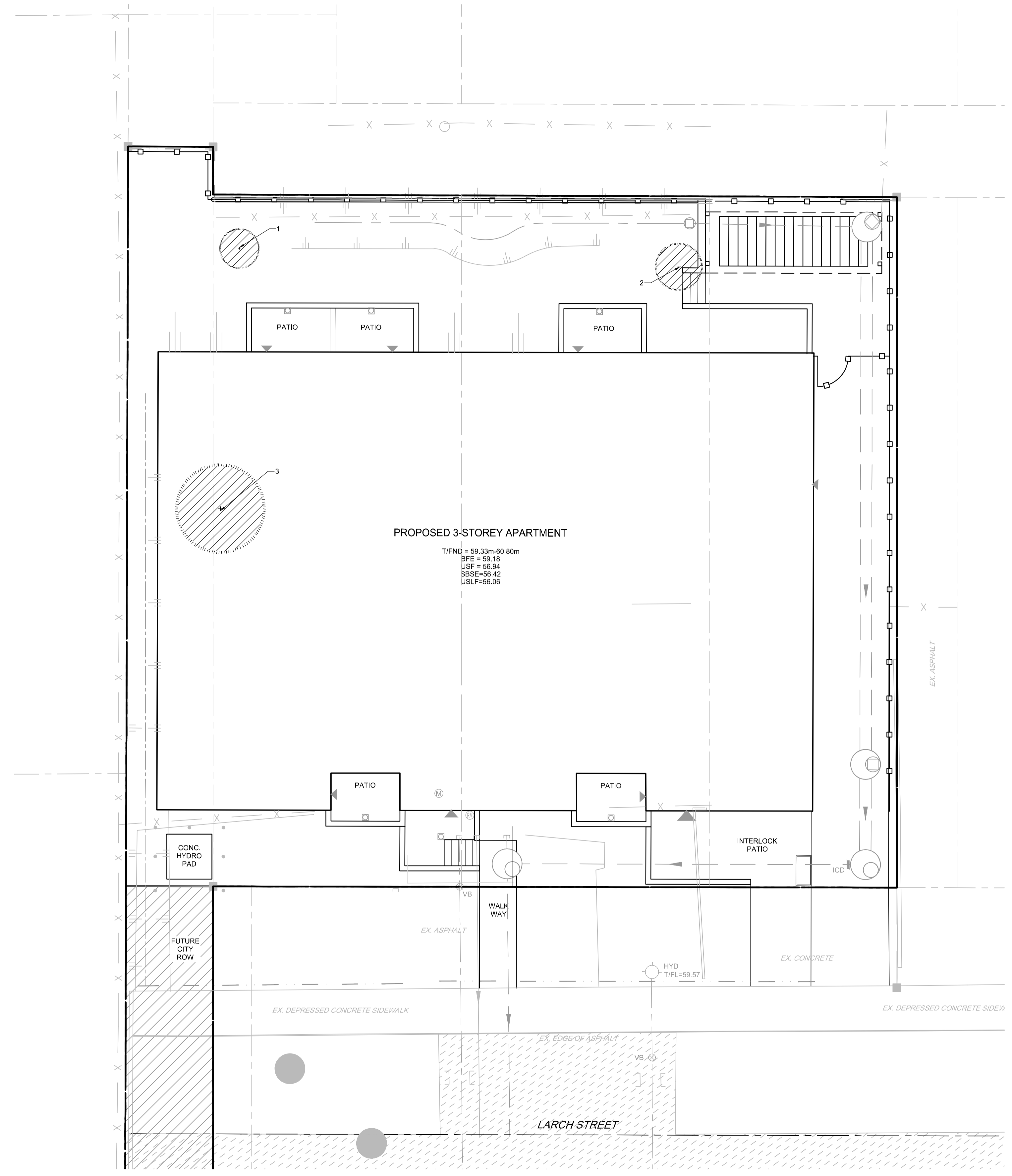
No.	Botanical Name	Common Name	DBH (cm)	CRZ (m)	Condition	Remarks	Recomm.
1	Pyrus sp.	Pear Tree	8.0	0.80	F	30cm vertical seam from ground level	Conflict
2	Magnolia sp.	Magnolia Tree	11.0	1.10	G		Conflict
3	Morus alba	Mulberry	18.0	1.80	G		Conflict

Legend

Condition	Conflict	Remarks
G	Good	Remove due to conflict with construction
F	Fair	Remove due to tree health or invasive status
P	Poor	PROTECT Protect as per detail D1 and related notes
VP	Very Poor	

Andrew McCreight
ANDREW MCCREIGHT
 MANAGER, DEVELOPMENT REVIEW CENTRAL
 PLANNING, REAL ESTATE & ECONOMIC DEVELOPMENT
 DEPARTMENT, CITY OF OTTAWA

APPROVED
 By Andrew McCreight at 8:01 am, Apr 10, 2024

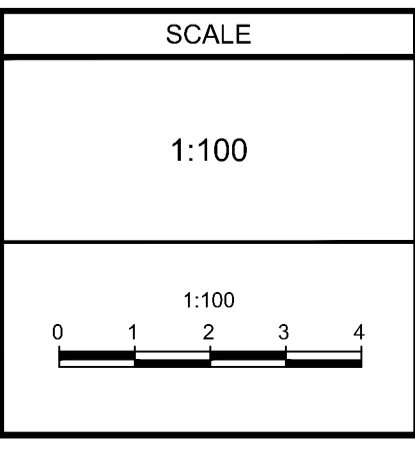


NOTE:
 THE POSITION OF ALL POLE LINES, CONDUITS, WATERMANS, SEWERS AND OTHER UNDERGROUND AND OVERGROUND UTILITIES AND STRUCTURES IS NOT NECESSARILY SHOWN ON THE CONTRACT DRAWINGS, AND WHERE SHOWN, THE ACCURACY OF THE POSITION OF SUCH UTILITIES AND STRUCTURES IS NOT GUARANTEED. BEFORE STARTING WORK, DETERMINE THE EXACT LOCATION OF ALL SUCH UTILITIES AND STRUCTURES AND ASSUME ALL LIABILITY FOR DAMAGE TO THEM.

OWNER INFORMATION
 15-19 LARCH ST. INC.
 359 KENT STREET, SUITE 503,
 OTTAWA, ONTARIO, K2P 0R6
 ROBERTO CAMPAGNA
 PHONE: (613) 851-7823
 roberto@rocahomes.ca

NOT FOR CONSTRUCTION

No.	REVISION	DATE	BY
8.	REISSUED FOR SITE PLAN APPROVAL	FEB 16/24	RGJ
7.	REISSUED FOR SITE PLAN APPROVAL	JAN 22/24	RGJ
6.	ISSUED FOR SITE PLAN APPROVAL	JAN 10/24	RGJ
5.	ISSUED FOR TENDER	DEC 15/23	RGJ
4.	ISSUED FOR BUILDING PERMIT	NOV 9/23	RGJ
3.	REVISED PER NEW SITE PLAN	OCT 30/23	RGJ
2.	REVISED PER CITY COMMENTS	SEPT 15/22	RGJ
1.	ISSUED FOR SITE PLAN APPROVAL	FEB 17/22	RGJ



DESIGN	MT
CHECKED	MT
DRAWN	JMK
CHECKED	MT
CHECKED	MT
APPROVED	RJ

FOR REVIEW ONLY

NOVATECH
 Engineers, Planners & Landscape Architects
 Suite 200, 240 Michael Cowpland Drive
 Ottawa, Ontario, Canada K2M 1P6
 Telephone: (613) 254-9643
 Facsimile: (613) 254-5867
 Website: www.novatech-eng.com

LOCATION	CITY OF OTTAWA
15 LARCH STREET <td></td>	
DRAWING NAME	TREE CONSERVATION PLAN
PROJECT No.	120251
REV	REV # 6
DRAWING No.	120251-TCR

M:\2020\120251\CAD\Landscapes\LP\Plan\120251-L.dwg, TCR, Feb 16, 2024, 11:11am, kearney

D07-12-22-0027

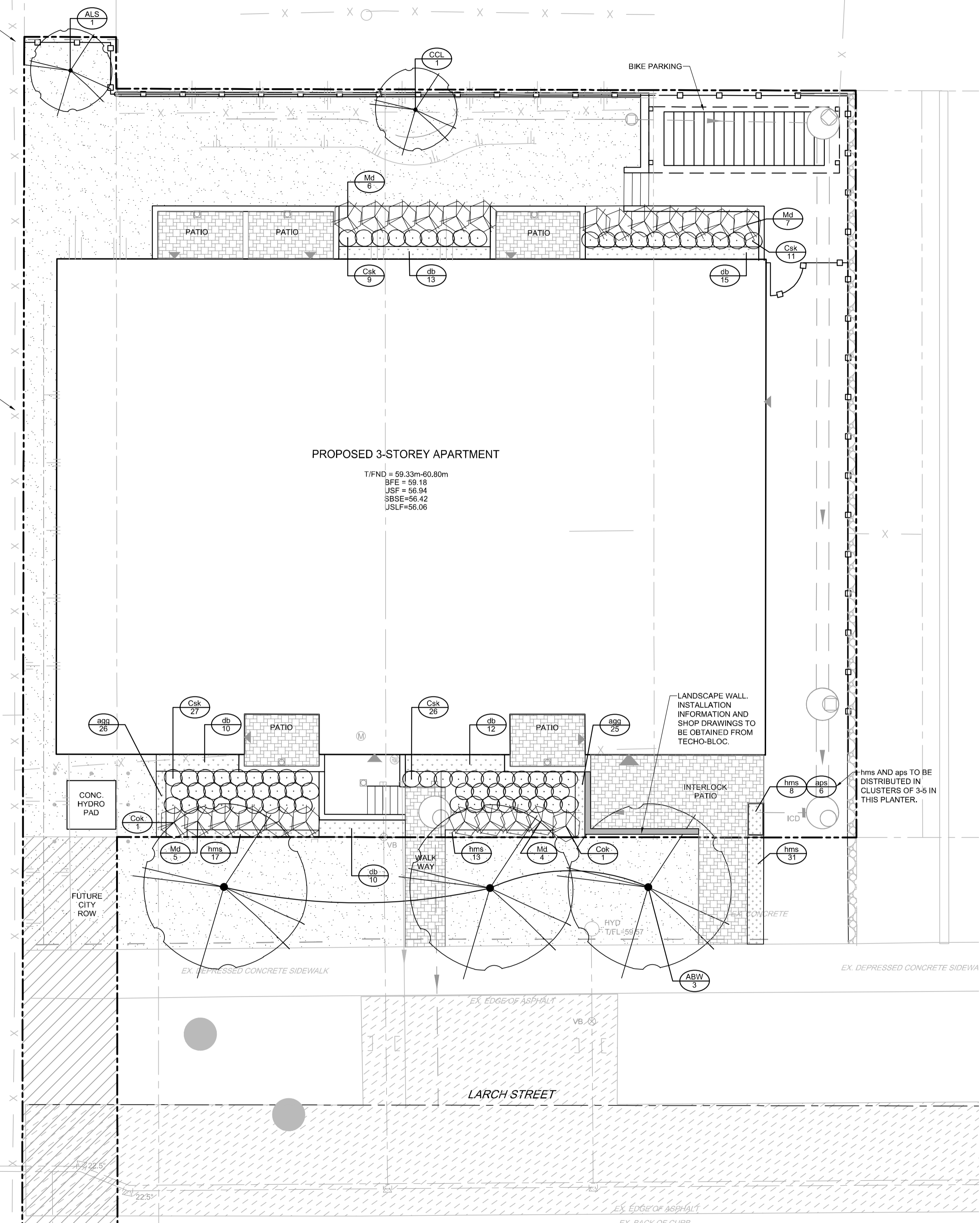
Andrew McCreight

ANDREW MCCREIGHT
MANAGER, DEVELOPMENT REVIEW CENTRAL
PLANNING, REAL ESTATE & ECONOMIC DEVELOPMENT
DEPARTMENT, CITY OF OTTAWA

APPROVED
 By Andrew McCreight at 8:01 am, Apr 10, 2024

TIE INTO EXISTING CHAINLINK FENCE

EXISTING CHAINLINK FENCE



PROPOSED 3-STOREY APARTMENT

T/FND = 59.33m-60.80m
 BFE = 59.18
 JSF = 59.94
 SBSF = 59.42
 USLF = 56.06

LEGEND

- PROPERTY LIMIT
- [Pattern] PROPOSED PAVERS
- [Pattern] RIVER STONE
- [Pattern] SOD
- [Pattern] PERENNIALS/BULBS
- [Pattern] ORNAMENTAL GRASSES
- [Symbol] PROPOSED DECIDUOUS TREE
- [Symbol] PROPOSED SHRUBS
- [Symbol] SPECIES (SEE PLANT LIST)
- [Symbol] QUANTITY
- [Symbol] WOODEN FENCE 1.8m HT
- [Symbol] PROPOSED LANDSCAPE WALL

PRODUCT INFORMATION

Install products as per manufacturer specifications. Shop drawings required for the Landscape Wall for review and approval before construction. Note that a finished face is required on the front and back of the wall.

PAVERS
 Edge of pavers to receive edge restraint.
 • Blu 80 Smooth Commercial by TECHO-BLOC
 Size: 80mm, Smooth
 Pattern: Modular laying pattern 02 for Blu collection
 Colour: Greyed Nickel

LANDSCAPE WALL
 • Refined Smooth Commercial by TECHO-BLOC
 Size: 180mm PILR/CRR/EDGE, Smooth
 Pattern:
 Colour: Greyed Nickel

LANDSCAPE WALL CAPS
 • Refined Smooth Commercial by TECHO-BLOC
 Size: 90mm, Smooth
 Pattern:
 Colour: Greyed Nickel

Contact person for TECHO-BLOC:
 Jada Blackwood
 Commercial Sales Representative
Techo-Bloc
 P: (647)-469-5493
 E: jada.blackwood@techo-bloc.com

GENERAL

1. Read and interpret this drawing/ drawing set in conjunction with all the contract details and specifications, including related civil, utility, structural, architectural, mechanical, electrical, environmental, geotechnical, and survey information.
2. The Contractor is to determine the exact location, size, material, and elevation of all existing utilities prior to commencing construction. Protect and assume responsibility for all existing utilities regardless of being shown on the drawings.
3. It is essential to use the plans and details in conjunction with the specifications and notes.
4. Do not scale drawings. Work to dimensions only.
5. Protect all existing and retained vegetation for the duration of construction according to the contract details and specifications.
6. Reinstate all areas and items damaged or disturbed, beyond the Limit of Work, because of construction activities, including but not limited to construction staging areas, haul roads, stockpile areas, etc. to the satisfaction of the Consultant. Unless otherwise noted, Contractor is to reinstate all areas to pre-construction condition or better to the satisfaction of the Contract Administrator.

PLANTING

1. Plant material to be No. 1 Grade and is to comply with Canadian Standards for Nursery Stock (latest edition) published by the Canadian Nursery Landscape Association.
2. Use structurally sound plant material with strong fibrous root system free of disease, defects, and injuries. Use trees with straight trunks, well and characteristically branched for species. Obtain approval from consultant of plant material at source prior to digging. All trees and shrubs to be container grown, potted, W/B or B/B, as indicated on Plant List. Bare root plants are only acceptable for certain species and as approved by the Landscape Architect.
3. Plant material substitutions are not to be permitted without the written approval from the Consultant, with 48 hours notice, prior to shipping plant material.
4. Plant locations are schematic / approximate only. Contractor is to stake out locations on site for approval by the Landscape Architect prior to installation.
5. The illustrated number of plants shown in the Planting Plan supersedes the estimated number in the Plant List. Contractor to report any discrepancies to the Landscape Architect prior to installation. Contractor will assume full responsibility if the Landscape Architect is not notified.
6. Ensure trees are thoroughly watered following planting. Monitor material and ensure adequate moisture until acceptance.
7. In heavy clay or poorly drained soils, set root ball with root collar 75-100mm higher than finished grade.
8. Approved topsoil depths are as follows:
 - a. Plant Beds - 450mm continuous depth. Applies to shrubs, perennials, vines, and groundcovers.
 - b. Sod/ Seed Areas - 100mm depth.
9. Sod to be No. 1 Kentucky Bluegrass Sod grown from minimum mixture of 3 Kentucky Bluegrass cultivars. Quality and source are to comply with Canadian Standards for Nursery Stock, Section 17, (latest edition) published by the Canadian Nursery Landscape Nursery Landscape Association.
10. Apply the following mineral fertilizer unless soil tests show other requirements:
 - a. Plant Beds - (8-32-16), i.e. 8% Nitrogen, 32% Phosphorus, 16% Potash per manufacturer specifications.
 - b. Sod Areas - (8-32-16), i.e. 8% Nitrogen, 32% Phosphorus, 16% Potash at a rate of 350kg/ha.
11. Where applicable, for any plant areas with a mix of species/ cultivars notes. Contractor is to cluster like plants in groups of 3-5 and evenly distribute these in the noted area.

NOVATECH DETAILS

- Found on Sheet L2.
- D1. Standard Deciduous Tree Planting
 - D2. Shrub and Perennial Planting
 - D3. Wooden Fence
 - D4. Riverstone

PLANT LIST

KEY	QTY	BOTANICAL NAME	COMMON NAME	SIZE	COND	SPACING
Deciduous Trees						
ABW	3	<i>Acer rubrum</i> 'Brandywine'	Brandywine Red Maple	50mm Cal	WB	As Shown
ALS	1	<i>Amelanchier laevis</i> 'Spring Flurry'	Spring Flurry Serviceberry	50mm Cal	WB	As Shown
CCL	1	<i>Carpinus caroliniana</i>	American Hornbeam Ironwood	50mm Cal	WB	As Shown
Coniferous Shrubs						
Cok	2	<i>Chamaecyparis obtusa</i> 'Koster'	Koster's Hinokie False Cypress	3g	PT	As Shown
Md	22	<i>Microbiota decussata</i>	Siberian Carpet Cypress	2g	PT	As Shown
Deciduous Shrubs						
Csk	73	<i>Cornus sericea</i> 'Kelsey'	Kelsey Dogwood	2g	PT	As Shown
Perennials						
agg	51	<i>Allium giganteum</i> 'Globemaster'	Ornamental Onion	1g	PT	20cm O.C.
aps	6	<i>Allium x 'Purple Sensation'</i>	Ornamental Onion	1g	PT	20cm O.C.
hms	69	<i>Hemerocallis 'Mini Stella D'oro'</i>	Mini Stella D'oro Daylily	1g	PT	30cm O.C.
Ornamental Grasses						
db	60	<i>Deschampsia cespitosa</i> 'Bronzeschleier'	Bronze Veil Tufted Hair Grass	1g	PT	50cm O.C.

NOTE:
 THE POSITION OF ALL POLE LINES, CONDUITS, WATERMANS, SEWERS AND OTHER UNDERGROUND AND OVERGROUND UTILITIES AND STRUCTURES IS NOT NECESSARILY SHOWN ON THE CONTRACT DRAWINGS, AND WHERE SHOWN, THE ACCURACY OF THE POSITION OF SUCH UTILITIES AND STRUCTURES IS NOT GUARANTEED. BEFORE STARTING WORK, DETERMINE THE EXACT LOCATION OF ALL SUCH UTILITIES AND STRUCTURES AND ASSUME ALL LIABILITY FOR DAMAGE TO THEM.

OWNER INFORMATION
 15-19 LARCH ST. INC.
 359 KENT STREET, SUITE 503,
 OTTAWA, ONTARIO, K2P 0R6
 ROBERTO CAMPAGNA
 PHONE: (613) 851-7823
 roberto@rocahomes.ca

NOT FOR CONSTRUCTION

No.	REVISION	DATE	BY
8.	REISSUED FOR SITE PLAN APPROVAL	FEB 16/24	RGJ
7.	REISSUED FOR SITE PLAN APPROVAL	JAN 22/24	RGJ
6.	ISSUED FOR SITE PLAN APPROVAL	JAN 10/24	RGJ
5.	ISSUED FOR TENDER	DEC 15/23	RGJ
4.	ISSUED FOR BUILDING PERMIT	NOV 9/23	RGJ
3.	REVISED PER NEW SITE PLAN	OCT 30/23	RGJ
2.	REVISED PER CITY COMMENTS	SEPT 15/22	RGJ
1.	ISSUED FOR SITE PLAN APPROVAL	FEB 17/22	RGJ

SCALE

1:100

1:100

FOR REVIEW ONLY

DESIGN	JMK
CHECKED	RGJ
DRAWN	JMK
CHECKED	RGJ
APPROVED	RGJ



NOVATECH
 Engineers, Planners & Landscape Architects
 Suite 200, 240 Michael Cowpland Drive
 Ottawa, Ontario, Canada K2M 1P6
 Telephone (613) 254-9643
 Facsimile (613) 254-5867
 Website www.novatech-eng.com

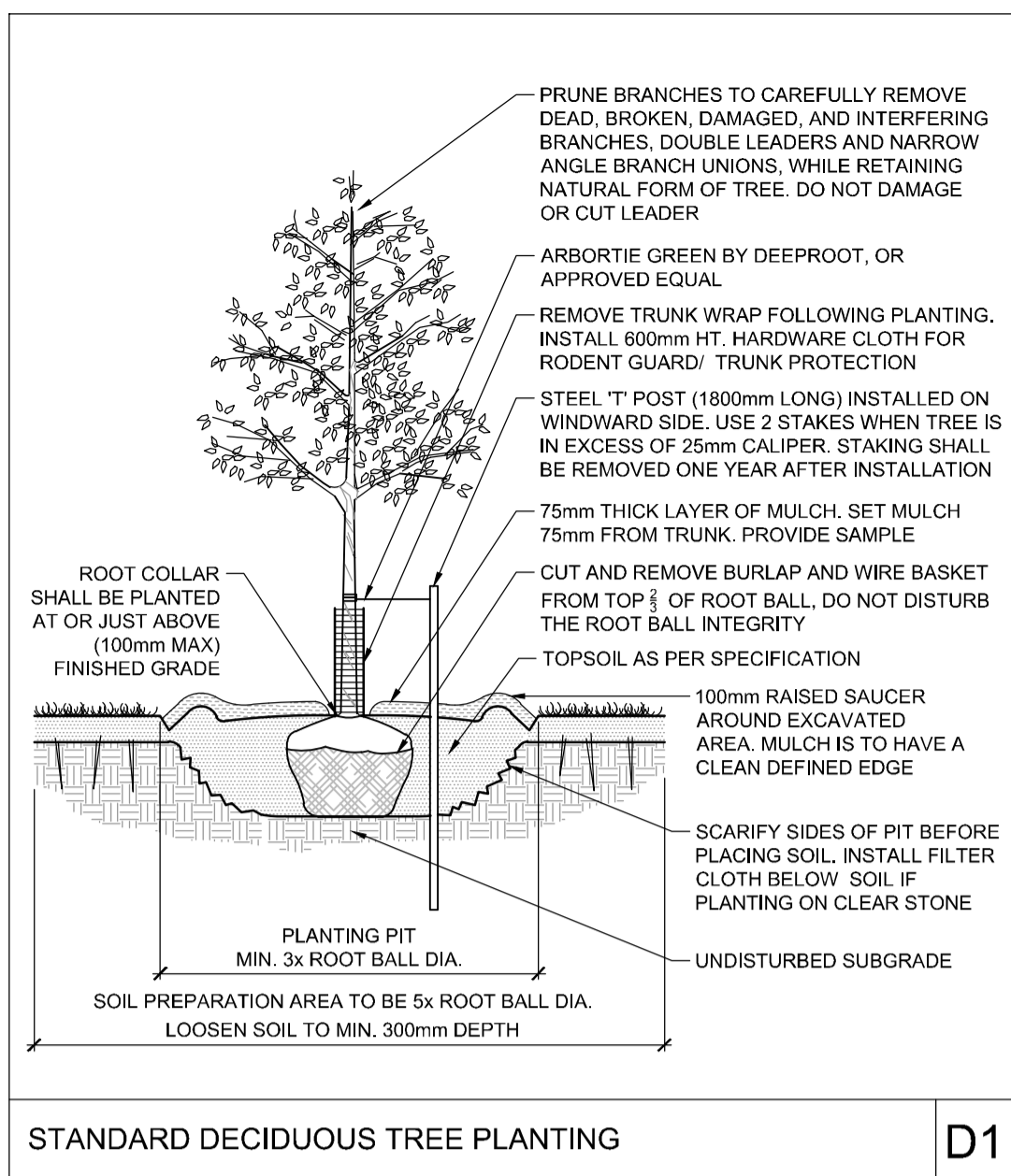
LOCATION
 CITY OF OTTAWA
 15 LARCH STREET

DRAWING NAME
 LANDSCAPE PLAN

PROJECT NO.	120251
REV #	REV # 8
DRAWING NO.	120251-L1

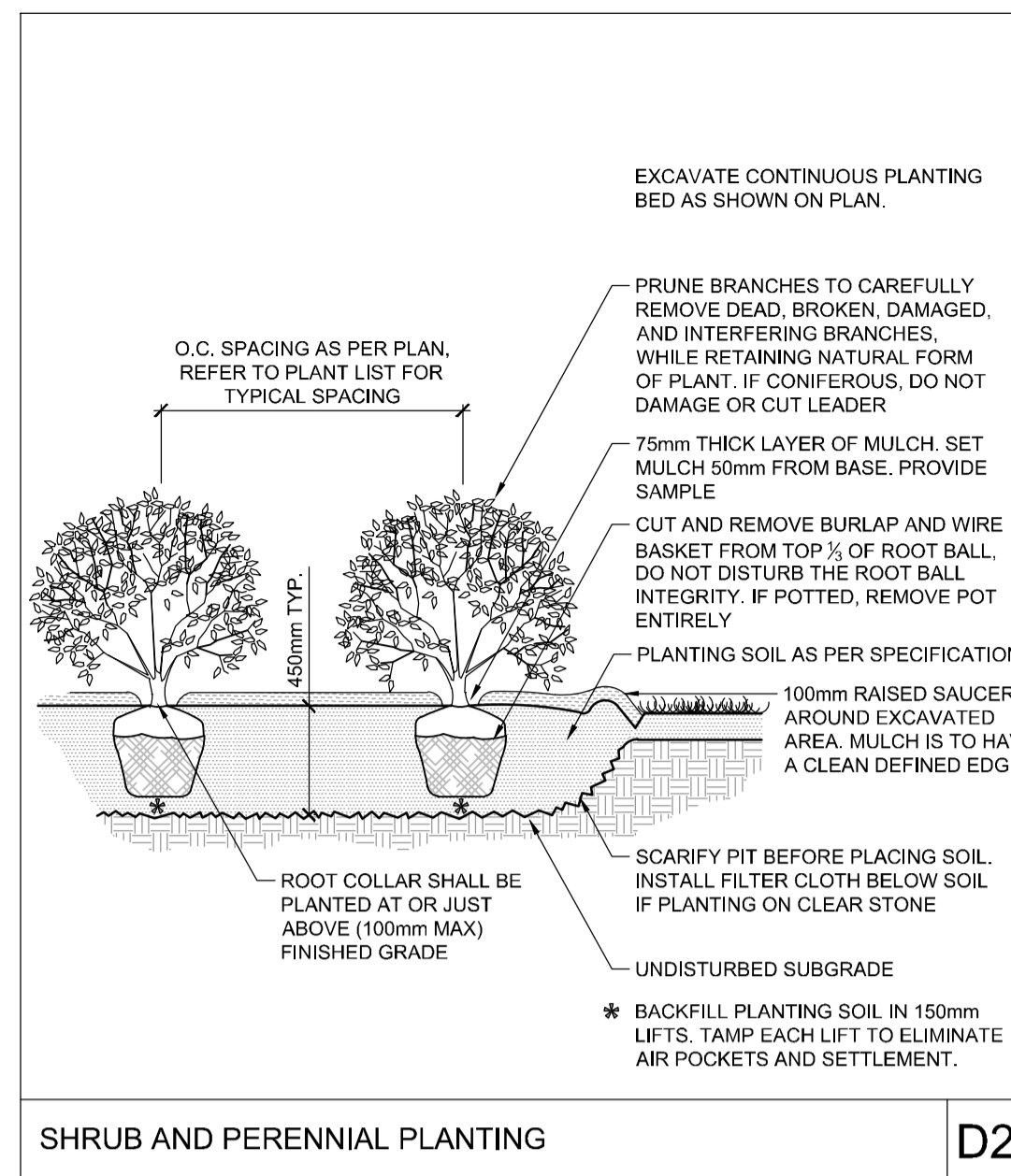
M:\2020\120251\CAD\Drawings\L1_Plan\120251-L1.dwg, L1 (landscape), Feb 16, 2024 - 11:11 am, jkranlly

D07-12-22-0027



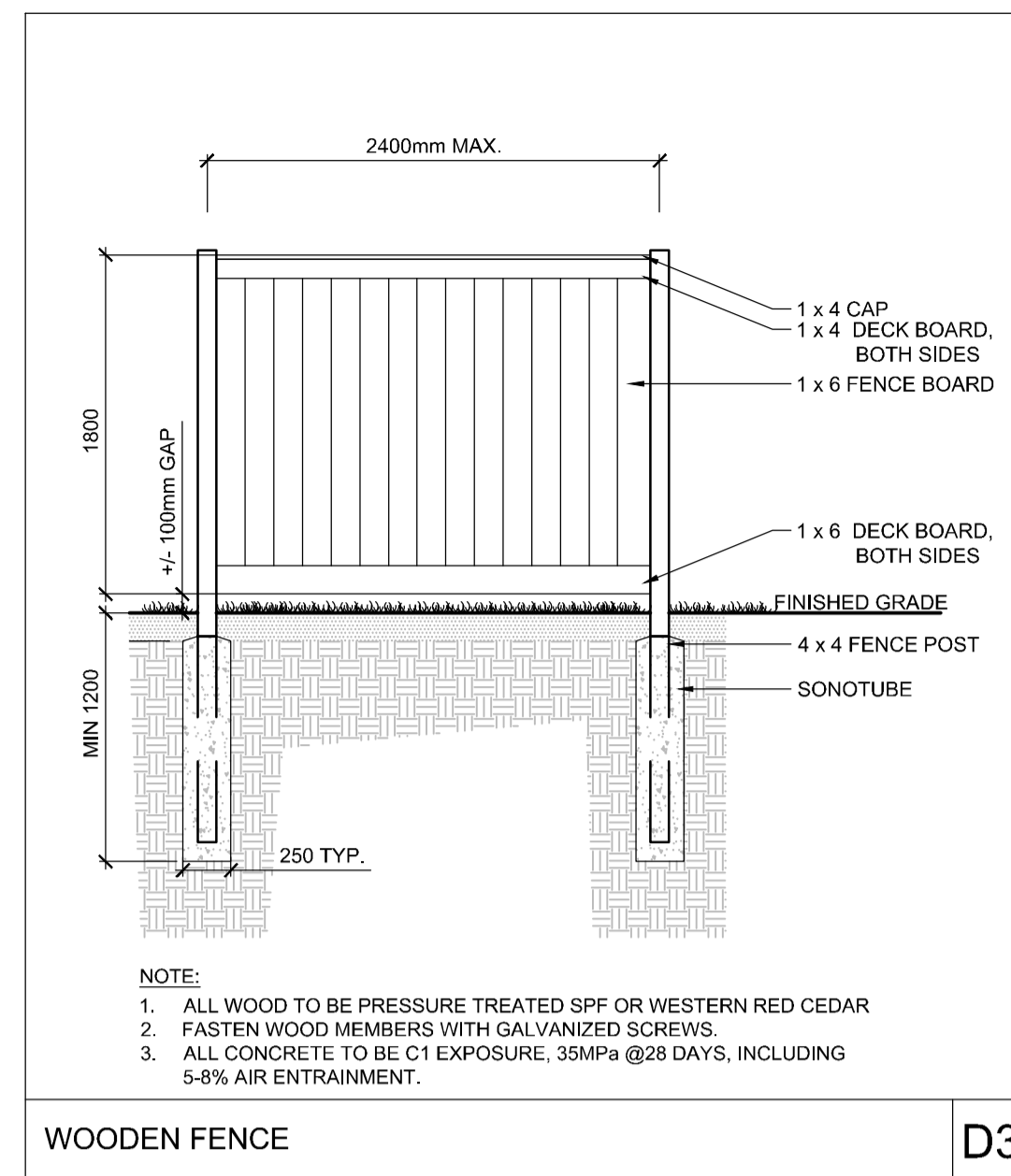
STANDARD DECIDUOUS TREE PLANTING

D1



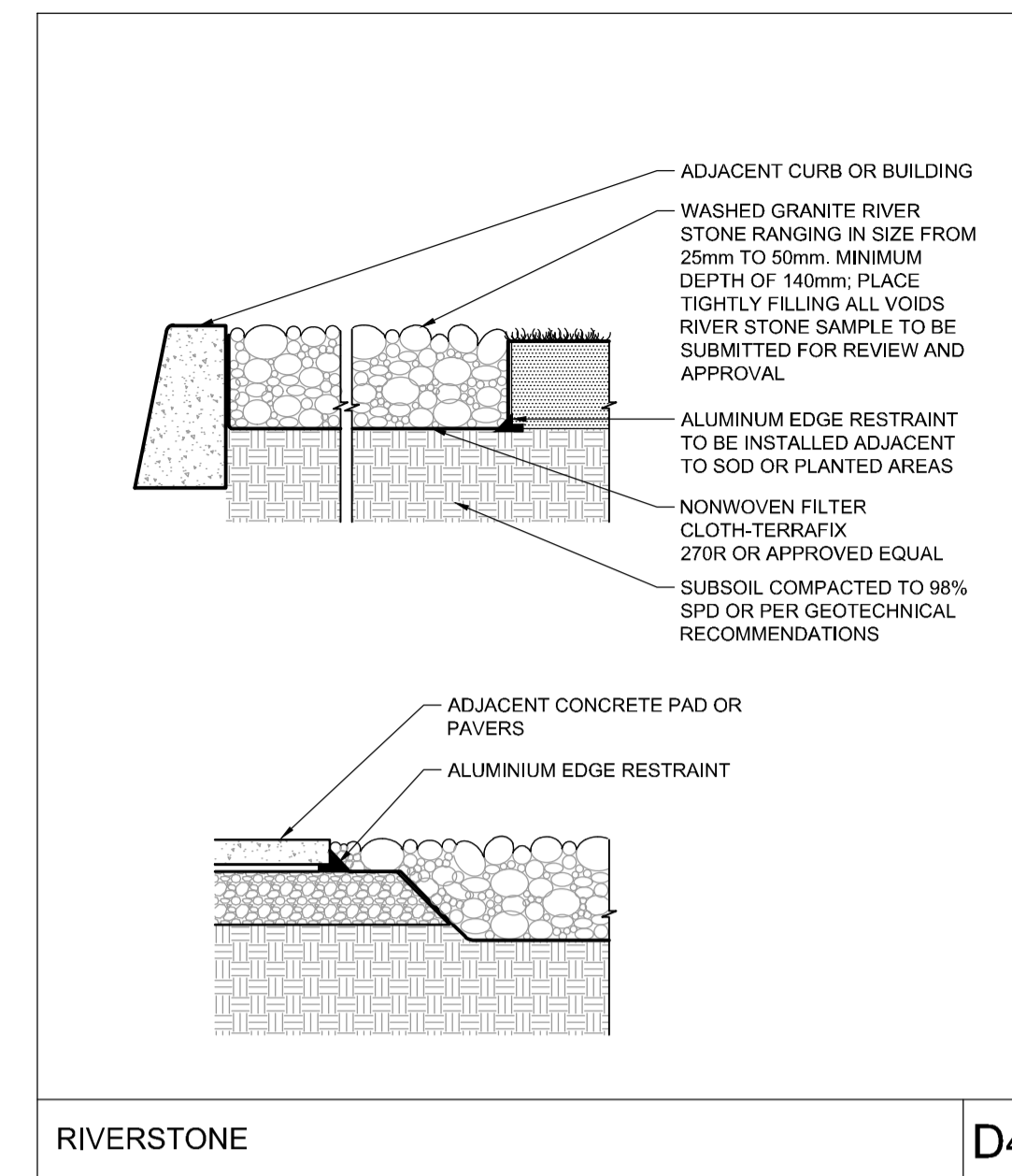
SHRUB AND PERENNIAL PLANTING

D2



WOODEN FENCE

D3



RIVERSTONE

D4

Andrew McCreight

ANDREW MCCREIGHT
MANAGER, DEVELOPMENT REVIEW CENTRAL
PLANNING, REAL ESTATE & ECONOMIC DEVELOPMENT
DEPARTMENT, CITY OF OTTAWA

APPROVED
 By Andrew McCreight at 8:01 am, Apr 10, 2024

NOTE:
 THE POSITION OF ALL POLE LINES, CONDUITS, WATERMANS, SEWERS AND OTHER UNDERGROUND AND OVERGROUND UTILITIES AND STRUCTURES IS NOT NECESSARILY SHOWN ON THE CONTRACT DRAWINGS, AND WHERE SHOWN, THE ACCURACY OF THE POSITION OF SUCH UTILITIES AND STRUCTURES IS NOT GUARANTEED. BEFORE STARTING WORK, DETERMINE THE EXACT LOCATION OF ALL SUCH UTILITIES AND STRUCTURES AND ASSUME ALL LIABILITY FOR DAMAGE TO THEM.

OWNER INFORMATION
 15-19 LARCH ST. INC.
 359 KENT STREET, SUITE 503,
 OTTAWA, ONTARIO, K2P 0R6
 ROBERTO CAMPAGNA
 PHONE: (613) 851-7823
 roberto@rocahomes.ca

NOT FOR CONSTRUCTION

No.	REVISION	DATE	BY
8.	REISSUED FOR SITE PLAN APPROVAL	FEB 16/24	RGJ
7.	REISSUED FOR SITE PLAN APPROVAL	JAN 22/24	RGJ
6.	ISSUED FOR SITE PLAN APPROVAL	JAN 10/24	RGJ
5.	ISSUED FOR TENDER	DEC 15/23	RGJ
4.	ISSUED FOR BUILDING PERMIT	NOV 9/23	RGJ
3.	REVISED PER NEW SITE PLAN	OCT 30/23	RGJ
2.	REVISED PER CITY COMMENTS	SEPT 15/22	RGJ
1.	ISSUED FOR SITE PLAN APPROVAL	FEB 17/22	RGJ

DESIGN	CHECKED	DRAWN	CHECKED	APPROVED
JMK	RGJ	JMK	RGJ	RGJ

SCALE: AS SHOWN

FOR REVIEW ONLY

NOVATECH
 Engineers, Planners & Landscape Architects
 Suite 200, 240 Michael Cowpland Drive
 Ottawa, Ontario, Canada K2M 1P6
 Telephone: (613) 254-9643
 Facsimile: (613) 254-5867
 Website: www.novatech-eng.com

LOCATION CITY OF OTTAWA 15 LARCH STREET	PROJECT No. 120251
DRAWING NAME LANDSCAPE DETAILS	REV # 6
	DRAWING No. 120251-L2