



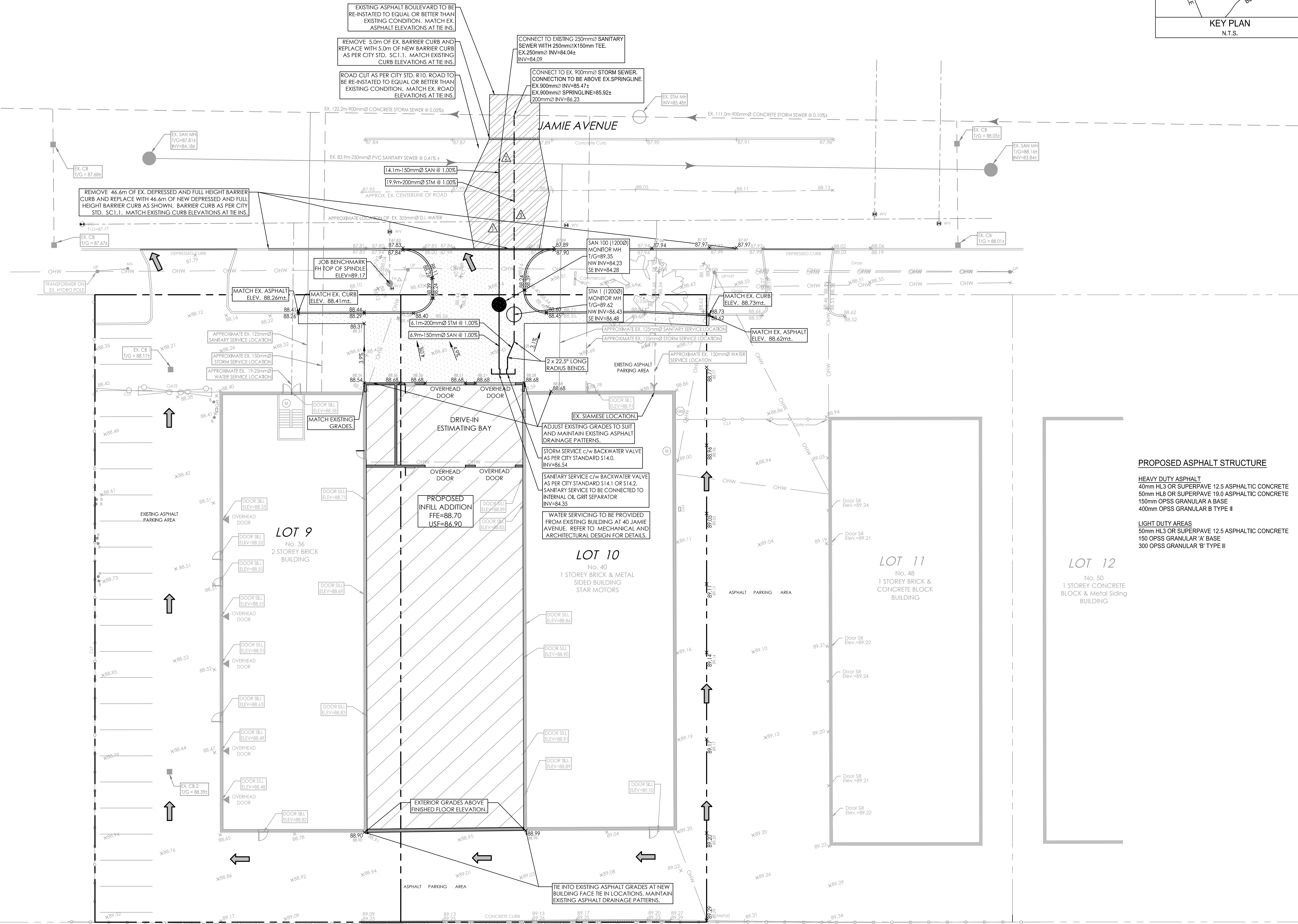
Copyright Reserved

The Contractor shall verify and be responsible for all dimensions. DO NOT scale the drawing - any errors or omissions shall be reported to Stantec without delay.  
The Copyrights to all designs and drawings are the property of Stantec. Reproduction or use for any purpose other than that authorized by Stantec is forbidden.

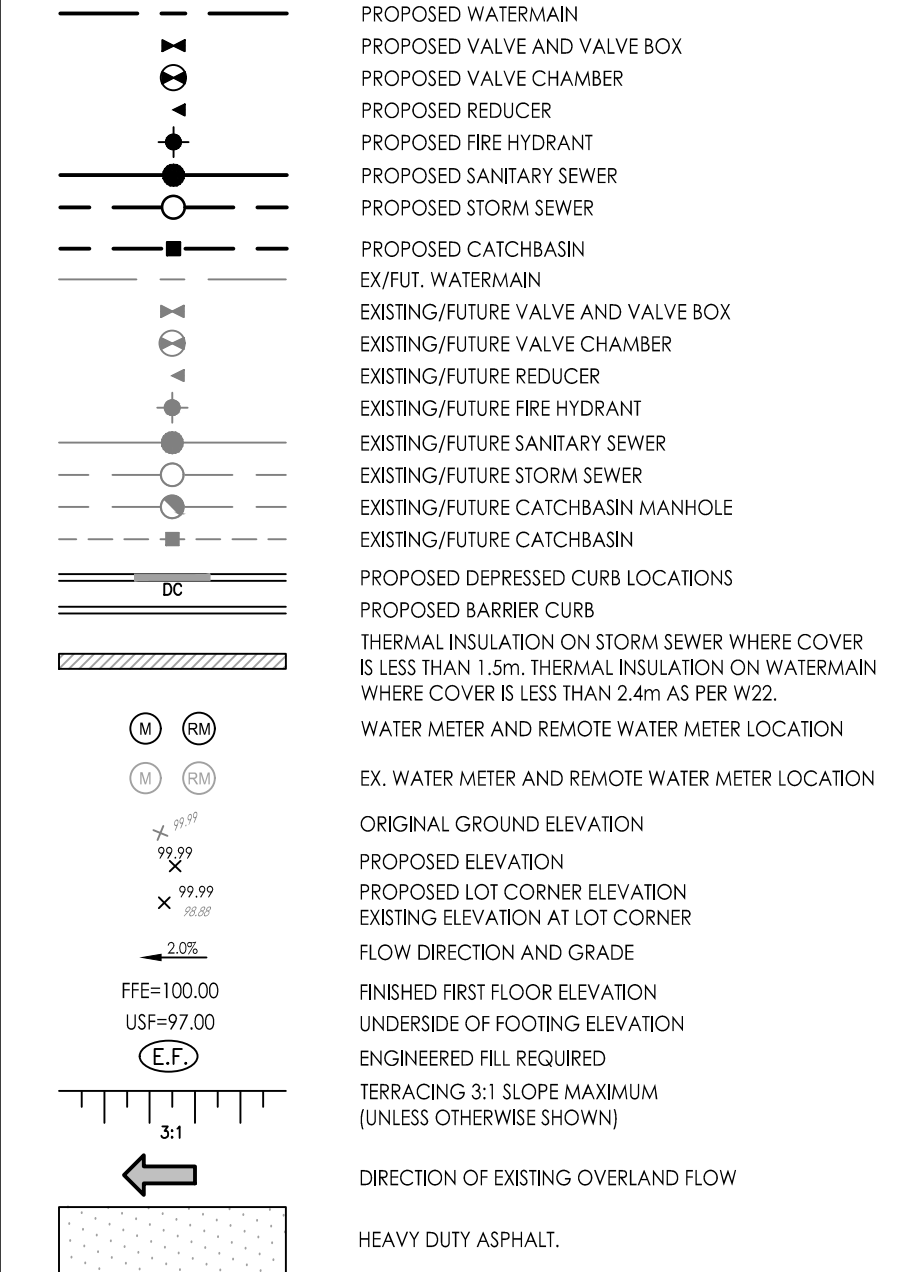


CROSSING	SEWER AND WATERMAIN CROSSING TABLE					
	STM INV	STM OBV	SAN INV	SAN OBV	WTR TOP	WTR BTM
▲	86.28	86.48	84.18	84.33	85.83	85.53
▲	86.34	86.54	84.09	84.24	85.84	85.54

\* BRACKETS DENOTE ADJUSTED VALUE WITH CONCRETE PIPE THICKNESS



Legend



Notes

- WATER SERVICING TO BE SUPPLIED FROM 40 JAMIE AVENUE. REFER TO MECHANICAL AND ARCHITECTURAL DRAWINGS FOR DETAILS.
- NEW BUILDING TO BE SPRINKLERED. DETAILS TO BE PROVIDED BY MECHANICAL ENGINEER.
- NEW BUILDING ADDITION TO INCLUDE OIL / GRIT SEPARATOR INSIDE BUILDING AS PART OF SANITARY PLUMBING PRIOR TO CONNECTING TO SANITARY SEWER SERVICE.
- FLOOR DRAINS IN SHOP AREA TO BE CONNECTED TO INTERNAL SANITARY PLUMBING.
- ONLY ROOF AND FOOTING DRAINAGE (IF REQUIRED) TO BE CONNECTED TO STORM SEWER SERVICE.
- DEPTH OF EX. 300mm D.I. WATERMAIN IN JAMIE AVENUE TAKE FROM AS BUILT PLAN No. 14-110 SHEET 2 OF 3 - 6.91 OR 2.1m.
- CONTRACTOR TO NOTIFY ENGINEER OR CONTRACT ADMINISTRATOR OF ANY DISCREPANCIES NOTED ON PLAN PRIOR TO CONTINUING WITH CONSTRUCTION.
- EXISTING DRAINAGE PATTERNS ON SITE TO BE MAINTAINED.
- FOR ELECTRICAL, COMMUNICATIONS AND GAS SERVICING, REFER TO MECHANICAL DRAWINGS.
- BOUNDARY AND TOPOGRAPHIC INFORMATION WAS DERIVED FROM PLANS PREPARED BY ANNIS, O'SULLIVAN, VOLLEBEK LTD. TOPOGRAPHICAL PLAN OF LOT 9 AND 10, REGISTERED PLAN 564663, CITY OF OTTAWA.

PROPOSED ASPHALT STRUCTURE

HEAVY DUTY ASPHALT  
40mm HL3 OR SUPERPAVE 12.5 ASPHALTIC CONCRETE  
50mm HL3 OR SUPERPAVE 19.0 ASPHALTIC CONCRETE  
150mm OPSS GRANULAR A BASE  
400mm OPSS GRANULAR B TYPE II

LIGHT DUTY AREAS  
50mm HL3 OR SUPERPAVE 12.5 ASPHALTIC CONCRETE  
150 OPSS GRANULAR A' BASE  
300 OPSS GRANULAR B' TYPE II

Revision	By	Appd.	YY.MM.DD	
1	REVISED AS PER CITY COMMENTS	MJS	EB	23.03.03
0	ISSUED TO CITY FOR SPA	MJS	KK	22.02.11

File Name:	MJS	KK	MJS	21.01.20
160401647.DB	Dwn.	Chkd.	Dgn.	YY.MM.DD

Permit-Seal

Client/Project  
STAR MOTORS

STAR MOTORS BODY SHOP  
36-40 JAMIE AVENUE INFILL ADDITION  
OTTAWA, ON, CANADA

Title  
SITE SERVICING AND GRADING PLAN

Project No.	Scale	Sheet	Revision
160401647	1:200		
Drawing No.			