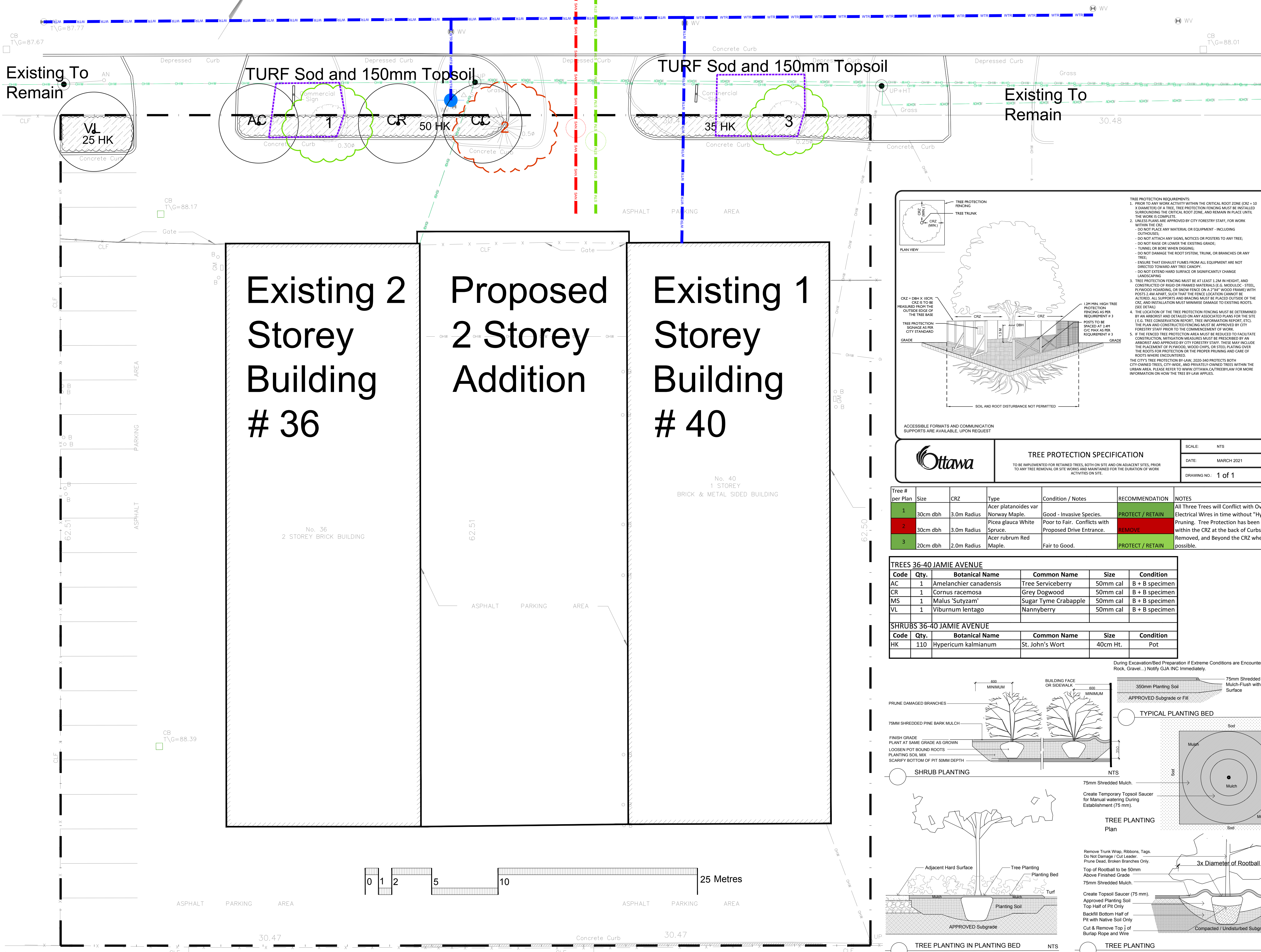


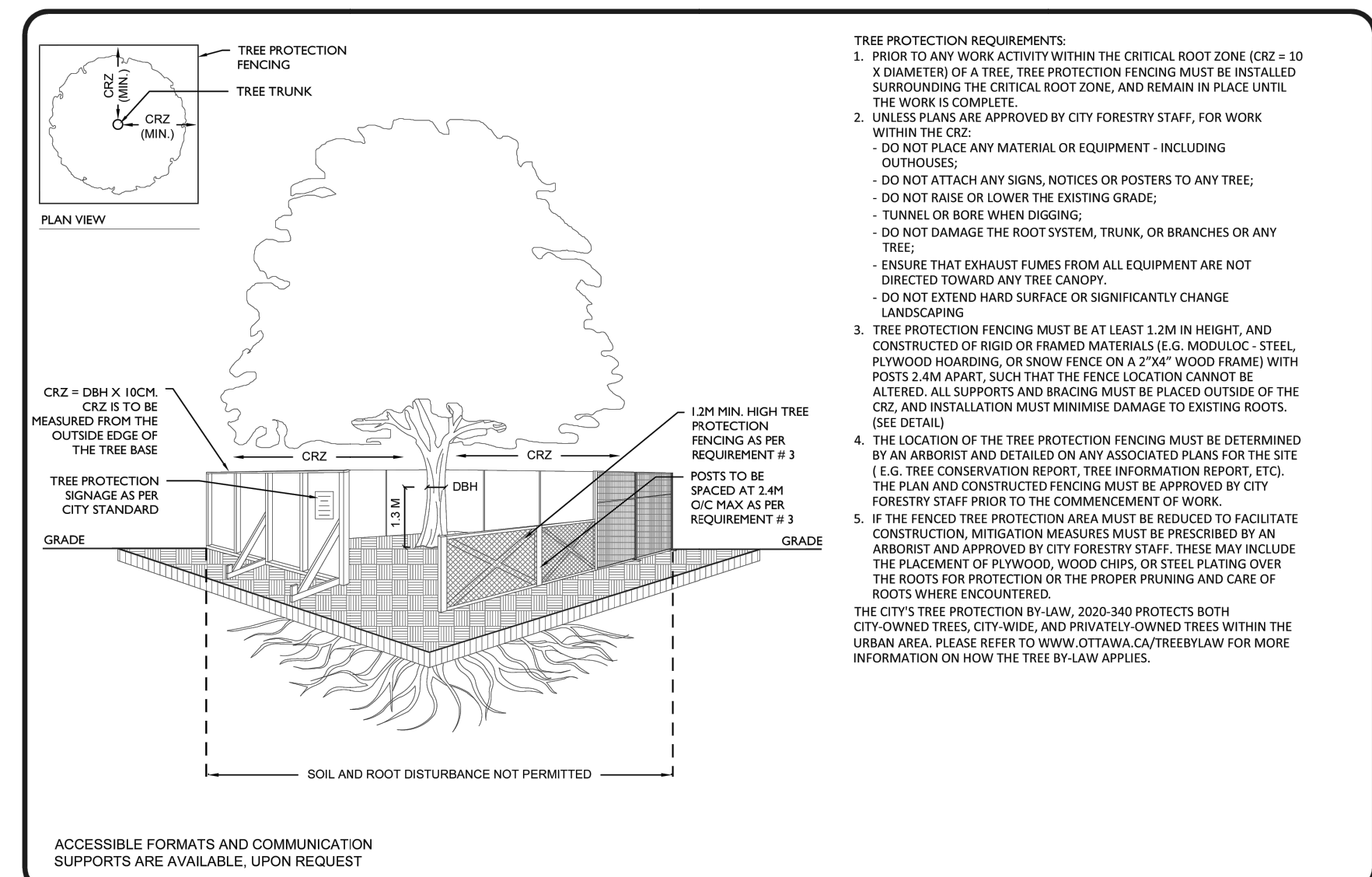
JAMIE AVENUE



Drawing Remains the Property of/Copyright Reserved by GJA INC. Do Not Use or Reproduce Without Approval of GJA INC. NOT To Be Used For Construction Unless indicated by Revision: "FOR LANDSCAPE CONSTRUCTION". Contractor is Responsible for Verification of Site Locations of all Utilities. Report any Discrepancies Between Site and Drawing Immediately to GJA INC. Do NOT Proceed Until Clarified.

TURF AREAS TO BE SOD C/W 150MM DEPTH TOPSOIL ON APPROVED SUBGRADE | SOD TO BE #1 GRADE TURFGRASS NURSERY SOD per NSGA - Fine Fescue/Kentucky Bluegrass Sod | PLANTING MIX TO BE APPROVED BY LANDSCAPE ARCHITECT | PLANT MATERIAL TO MEET CNLA STANDARDS/BE APPROVED BY LANDSCAPE ARCHITECT PRIOR TO PLANTING | ALL MATERIALS & WORK TO BE MAINTAINED UNTIL FINAL ACCEPTANCE. (MOWING TURF, WEEDING BEDS, WATERING TURF & PLANTS) & INCLUDE 1 YEAR WARRANTY FROM DATE OF FINAL ACCEPTANCE | PROVIDE WATERING OF ALL PLANT MATERIAL AS REQUIRED FOR PROPER ESTABLISHMENT UNTIL END OF WARRANTY PERIOD | REFER TO CIVIL ENGINEER'S DRAWING FOR ELEVATIONS / GRADING |

The Landscape Plan is to be read in conjunction with the grading, servicing, site and survey plan | Bare root material to be planted in season only | All plant material locations to be staked on site by the landscape contractor and checked by the landscape architect prior to planting | All trees to be preserved on or directly adjacent to the site will be protected | Plant material are to be installed a minimum of; 3.0m away from any part of any hydro transformer, 3.0m corridor between a fire hydrant and the curb, a 2.5m radius beside or behind a fire hydrant, 2.0m from any servicing/utility line or structure |



TREE PROTECTION SPECIFICATION	
TO BE IMPLEMENTED FOR RETAINED TREES, BOTH ON SITE AND ON ADJACENT SITES, PRIOR TO ANY TREE REMOVAL OR SITE WORKS AND MAINTAINED FOR THE DURATION OF WORK ACTIVITIES ON SITE.	
SCALE:	NTS
DATE:	MARCH 2021
DRAWING NO.:	1 of 1

Tree # per Plan	Size	CRZ	Type	Condition / Notes	RECOMMENDATION	NOTES
1	30cm dbh	3.0m Radius	Acer platanoides var Norway Maple.	Good - Invasive Species.	PROTECT / RETAIN	All Three Trees will Conflict with Overhead Electrical Wires in time without "Hydro" Pruning. Tree Protection has been Proposed within the CRZ at the back of Curbs to be Removed, and Beyond the CRZ where possible.
2	30cm dbh	3.0m Radius	Picea glauca White Spruce.	Poor to Fair. Conflicts with Proposed Drive Entrance.	REMOVE	
3	20cm dbh	2.0m Radius	Acer rubrum Red Maple.	Fair to Good.	PROTECT / RETAIN	

TREES 36-40 JAMIE AVENUE					
Code	Qty.	Botanical Name	Common Name	Size	Condition
AC	1	Amelanchier canadensis	Tree Serviceberry	50mm cal	B + B specimen
CR	1	Cornus racemosa	Grey Dogwood	50mm cal	B + B specimen
MS	1	Malus 'Sutyzam'	Sugar Tyme Crabapple	50mm cal	B + B specimen
VL	1	Viburnum lentago	Nannyberry	50mm cal	B + B specimen

SHRUBS 36-40 JAMIE AVENUE					
Code	Qty.	Botanical Name	Common Name	Size	Condition
HK	110	Hypericum kalmianum	St. John's Wort	40cm Ht.	Pot

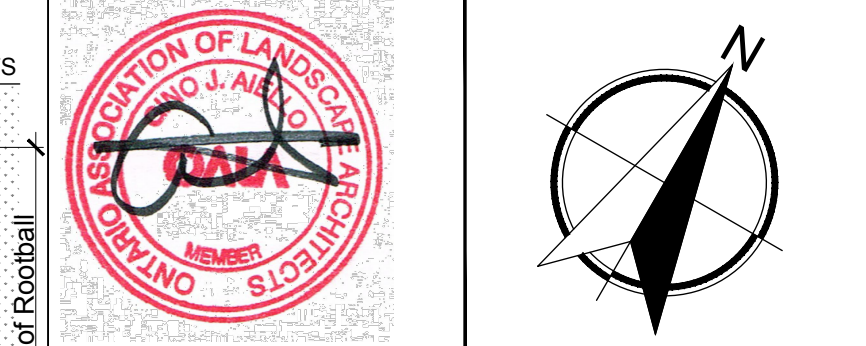
LEGEND

- Existing Tree to be Removed
- Existing Tree to Remain
- Existing Tree Protection to City of Ottawa Standards
- Proposed Deciduous Tree
- Proposed Planting Bed

BELOW GRADE SERVICES REFER TO CIVIL /CUP

- WTR - U/G Water Service
- STM - U/G Storm Service
- SAN - U/G Sanitary Service
- O/H - O/H Hydro Service

#	Revision	Date
3	PER CITY COMMENTS / TCR	2023 07 04
2	REVIEW / COORDINATION	2023 06 19
1	SITE PLAN CONTROL SUBMISSION 1	FEBRUARY 1 2022
0	REVIEW/COORDINATION	JANUARY 2022



Property Owner
1067005 Ontario Ltd.
 c/o Star Motors Ottawa 400 West Hunt Club Road Ottawa, K2E 1B2

GJA INC.
 GINO J. AIELLO | LANDSCAPE ARCHITECT
 GJALA.COM | 613.286.5130 | GINO@GJALA.COM
 110 DUNDAS ROAD UNIT #11 OTTAWA ONTARIO K2T 3G2

Project
STAR MOTORS BODY SHOP INFILL ADDITION
 36-40 JAMIE AVENUE

Landscape Plan

Scale: 1:125
 City of Ottawa
 Dwg # 18709

Sheet Number
L1
 D067-12-22-0031

