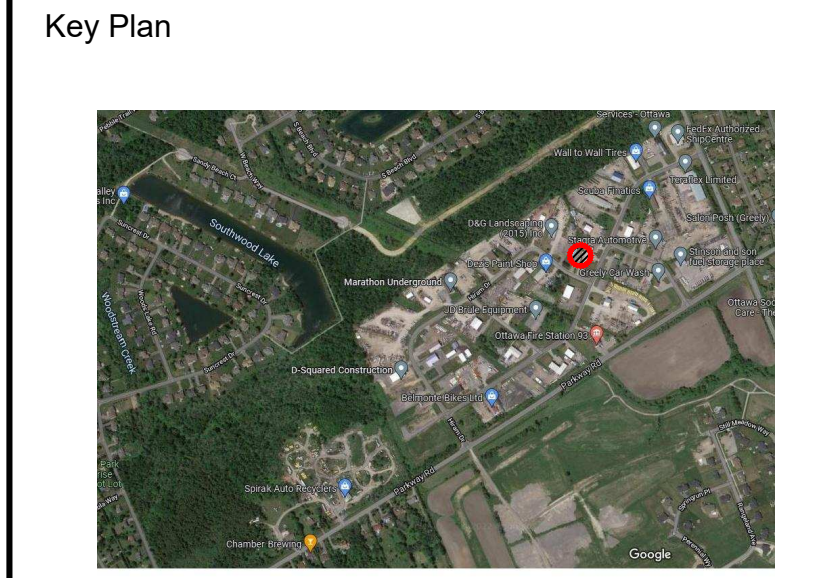


- LEGEND - PROPOSED DEVELOPMENT**
- SITE PROPERTY LINE
 - TREE IDENTIFICATION NUMBER
 - ✱ EXISTING TREE
 - CRITICAL ROOT ZONE
 - - - TREE PROTECTION FENCING
 - ✕ TREE TO BE REMOVED
 - ▒ PROPOSED BUILDING
 - ▨ ASPHALT SURFACE
 - ▩ GRANULAR SURFACE
 - SEED / SOD
 - PROPOSED CONIFEROUS TREE
 - PROPOSED LARGE SHRUB



No.	ISSUED FOR SPA	24 FEB 2022
Revision		Date

North:

Stamp:

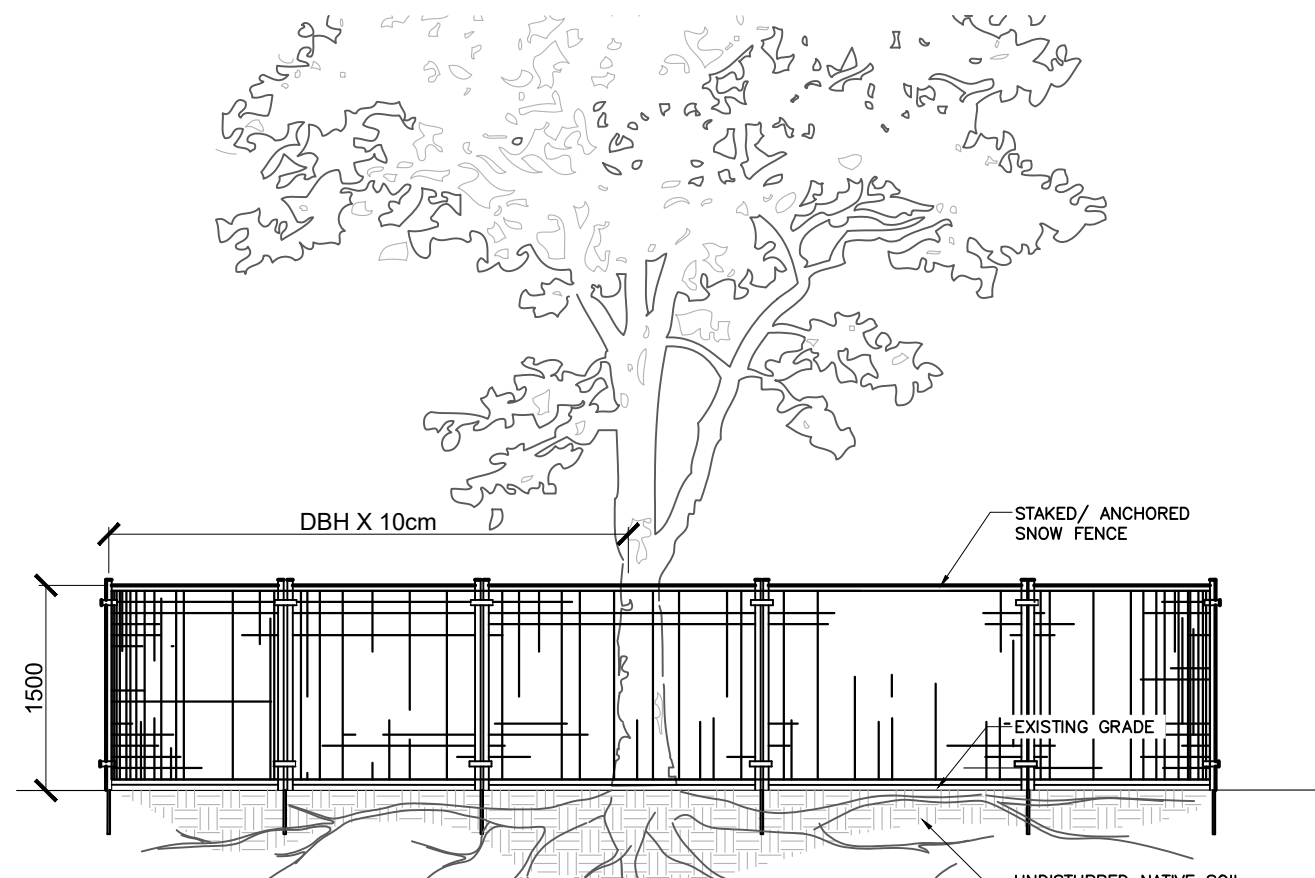
1 LANDSCAPE PLAN

Scale: 1:150

NOTES:

- 1.0 THE EXISTING PROPERTY IS LOCATED WITHIN AN AREA OF LIGHT INDUSTRIAL USE, BOUNDED BY INDUSTRIAL PROPERTIES TO THE EAST AND WEST AND COKER STREET TO THE SOUTH. THE SITE CONSISTS OF FLAT TOPOGRAPHY WITH AN EXISTING DRAINAGE DITCH TO THE NORTH. EXISTING VEGETATION IS PRIMARILY COMPRISED OF POPLAR AND WILLOW SPECIES ALONG THE DITCH AND OTHER RUDERAL SHRUB SPECIES. THE SOUTH END OF THE PROPERTY COMPRISES A LAWN AREA WITH THREE NORWAY MAPLE TREES. THE SITE CURRENTLY INCLUDES ONE SINGLE STORY LIGHT INDUSTRIAL BUILDING AND SEA CANS.
- APPROXIMATELY 326 m² TO BE COVERED BY THE PROPOSED BUILDING FOOTPRINT.
- 2.0 THE PROPOSED DEVELOPMENT DOES NOT REQUIRE THE REMOVAL OF ANY TREES.
- 3.0 THERE ARE 3 SMALL TREES AND 12 LARGE SHRUBS (STAGHORN SUMAC) PROPOSED ON THE DEVELOPMENT.
- 4.0 FOR RETAINED TREES:
 - ERECT A FENCE AT THE CRITICAL ROOT ZONE (CRZ) OF TREES;
 - DO NOT PLACE ANY MATERIAL OR EQUIPMENT WITHIN THE CRZ OF THE TREE;
 - DO NOT ATTACH ANY SIGNS, NOTICES OR POSTERS TO ANY TREE;
 - DO NOT RAISE OR LOWER THE EXISTING GRADE WITHIN THE CRZ WITHOUT APPROVAL;
 - TUNNEL OR BORE WHEN DIGGING WITHIN THE CRZ OF A TREE
 - DO NOT DAMAGE THE ROOT SYSTEM, TRUNK OR BRANCHES OF ANY TREE;
 - ENSURE THAT EXHAUST FUMES FROM ALL EQUIPMENT ARE NOT DIRECTED TOWARDS ANY TREE'S CANOPY.

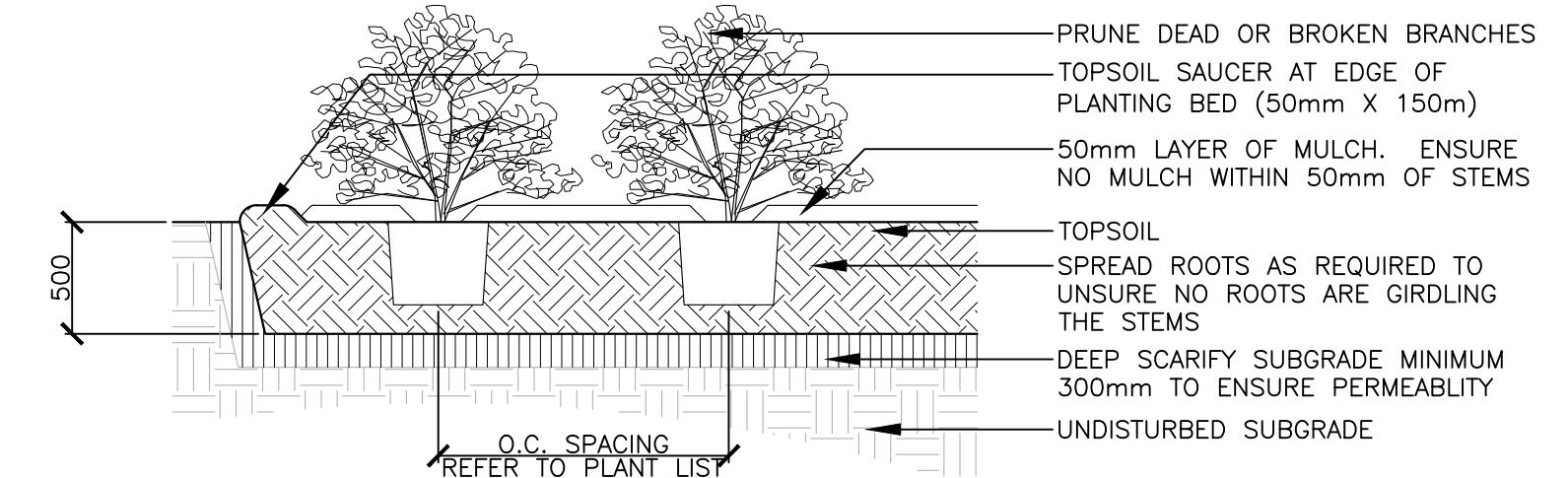
TREE INFORMATION REPORT - FIELD NOTES								
Tree #	Botanical Name	Common Name	DBH (cm)	Ownership	Condition	Comments	Arborist Recommendation	Removal Reason
1	Populus spp.	Poplar	25	Private	Moderate	Asymmetrical canopy, single stem, one broken limb	Remain	
2	Salix spp.	Willow	28	Private	Moderate	Asymmetrical canopy, single stem, pruned lower limbs, leaning	Remain	
3	Salix spp.	Willow	25	Private	Poor	Asymmetrical canopy, single stem, leaning, canopy die back 15%	Remain	
4	Populus spp.	Poplar	24	Private	Good/Moderate	Symmetrical canopy, single stem, split in bark at base	Remain	
5	Populus spp.	Poplar	20	Private	Poor	Asymmetrical canopy, single stem, broken limbs	Remain	
6	Salix spp.	Willow	30	Private	Moderate	Asymmetrical canopy, co-dominant leaders 2@3m above grade, canopy die back 10%, broken limbs, wires in tree	Remain	
7	Acer platanoides	Norway Maple	36	Private	Good	Symmetrical canopy, included bark at stem and limbs, split in trunk from base to 5m above grade	Remain	
8	Acer platanoides	Norway Maple	50	Private	Good	Symmetrical canopy, included bark at stem	Remain	
9	Acer platanoides	Norway Maple	43	Private	Good	Symmetrical canopy, included bark at stem, split in trunk from base to 2.5m above grade	Remain	



- NOTES:**
1. THE FOLLOWING PROTECTION MEASURES MUST BE IMPLEMENTED FOR RETAINED TREES, BOTH ON SITE AND ADJACENT SITES, PRIOR TO ANY TREE REMOVAL OR SITE WORKS AND MAINTAINED FOR THE DURATION OF CONSTRUCTION ON SITE.
 1. ERECT A FENCE AT THE CRITICAL ROOT ZONE (CRZ) OF TREES WHERE THE CRZ IS ESTABLISHED AS BEING 10 CENTIMETERS FROM THE TRUNK FOR EVERY CENTIMETER OF TRUNK DIAMETER AT BREAST HEIGHT. THE CRZ IS CALCULATED AS DBH X 10cm.
 2. DO NOT PLACE ANY MATERIAL OR EQUIPMENT WITHIN THE CRZ OF THE TREE
 3. DO NOT ATTACH ANY SIGNS, NOTICES OR POSTERS TO ANY TREE
 4. DO NOT RAISE OR LOWER THE GRADE WITHIN THE CRZ WITHOUT APPROVAL
 5. TUNNEL OR BORE WHEN DIGGING WITHIN THE CRZ OF A TREE
 6. DO NOT DAMAGE THE ROOT SYSTEM, TRUNK OR BRANCHES OF ANY TREE
 7. ENSURE THAT EXHAUST FUMES FROM ALL EQUIPMENT ARE NOT DIRECTED TOWARDS ANY TREE CANOPY

1 TREE PROTECTION

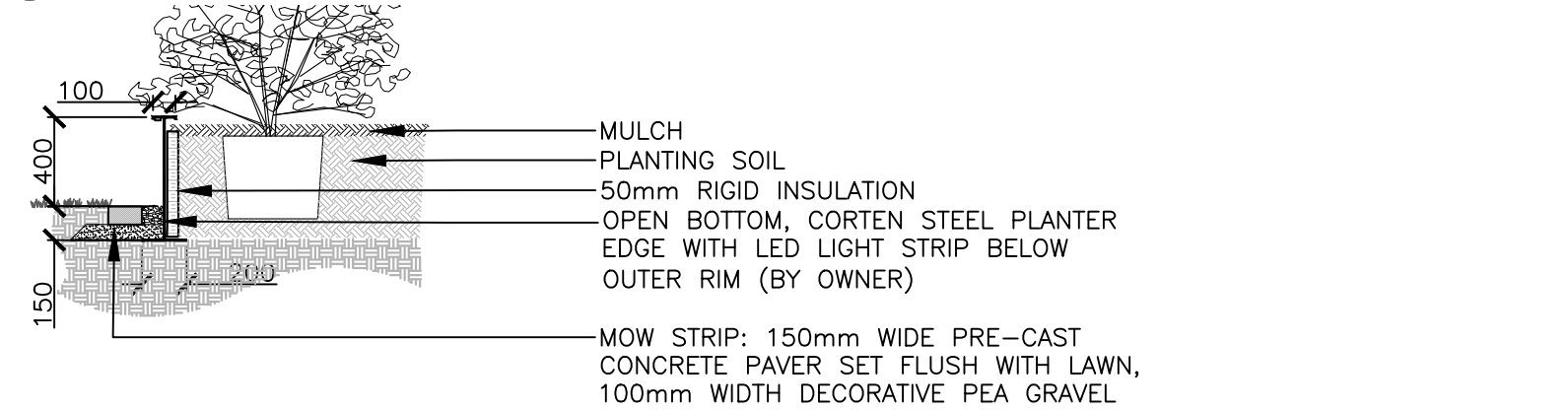
Scale: NTS



- NOTES:**
- TOP OF ROOT BALL TO RETAIN SAME ELEVATION AS GROWING CONDITIONS

2 PLANTING DETAILS

Scale: NTS

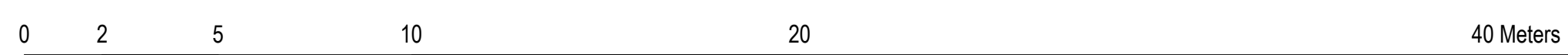


3 STEEL PLANTER EDGE

Scale: NTS

PROPOSED PLANTING: PLANT LIST

SYM.	BOTANICAL NAME	COMMON NAME	QTY.	SIZE	REMARKS
	CONIFEROUS TREES				
JSw	JUNIPERUS SCOPULORUM 'WITCHITA BLUE'	WITCHITA BLUE JUNIPER	03	1800mm HT.	CONTAINER
	SHRUBS				
JS	JUNIPERUS SABINA 'SKANDIA'	SKANDIA JUNIPER	05	450mm SPR.	CONTAINER
RT	RHUS TYPHINA	STAGHORN SUMAC	12	1800mm HT.	CONTAINER
	ORNAMENTAL GRASS / PERENNIAL				
CA	CLAMAGROSIS X ACUTIFLORA 'KARL FOERSTER'	FOERSTER REED GRASS	10	#2 POT	CONTAINER
PA	PEROVSKIA ATRIPLICIFOLIA 'LITTLE SPIRE'	LITTLE SPIRE RUSSIAN SAGE	15	#2 POT	CONTAINER



CSW Landscape Architecture
Urban Design
Site Planning
Recreation and Park Planning
Project Management

319 McRae Avenue, Suite 502, Ottawa, Ontario, K1Z 0B9
Tel: (613) 729-4536

1. All measurements in millimeters unless specified otherwise. Do not scale drawing. All drawings to be read in conjunction with written specifications.
2. Copyright reserved. This drawing is the exclusive property of CSW Landscape Architects Ltd. and shall not be used without the consent thereof.
3. This Drawing may not be used for construction until signed by the landscape architect. It is the responsibility of the contractor to:
 - check and verify all dimensions on site;
 - report all errors and/or omissions to the landscape architect;
 - comply with all pertinent codes and by-laws;
 - check and verify locations of all underground services with all local utilities prior to any digging.

Project: **DYMECH WAREHOUSE ADDITION**
1353 COKER STREET
GREELY, ONTARIO

Drawing: **LANDSCAPE PLAN AND TREE CONSERVATION REPORT**

Scale: 1:150	Date: FEB 2022
Report By: SE	Drawn By: SMc
Project Number: 2119-01	Sheet Number: L1.0