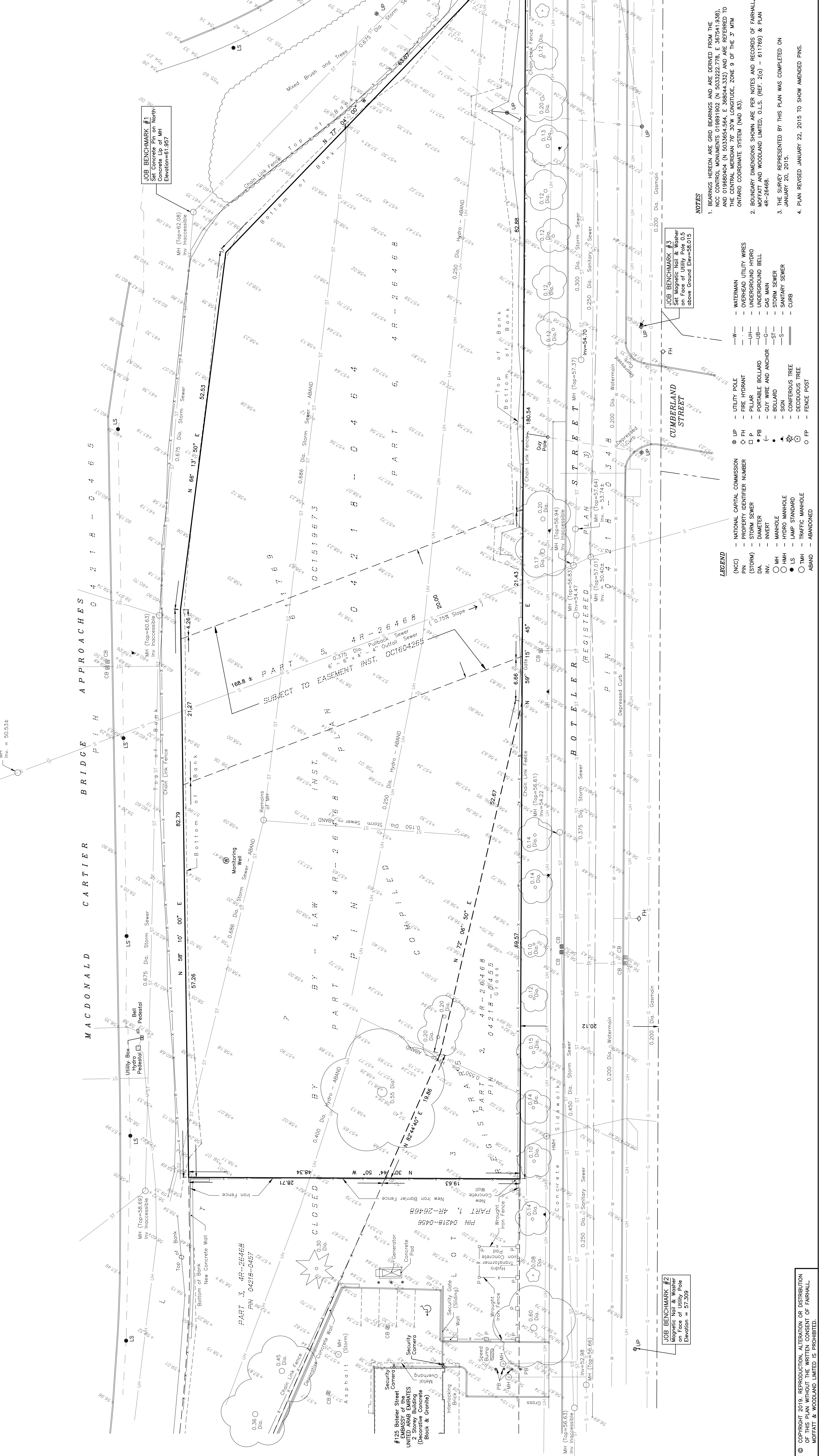
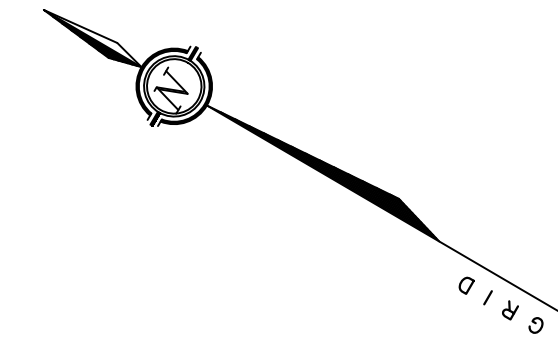


TOPOGRAPHIC SURVEY OF
PART OF LOTS 3 & 7
REGISTRAR'S COMPILED PLAN 611769
CITY OF OTTAWA

SCALE 1 : 250
0 5 10 20 25 metres
FAIRHALL, MOFFATT & WOODLAND LIMITED
ONTARIO LAND SURVEYORS

- ELEVATION NOTES**
- ELEVATIONS SHOWN HEREON ARE REFERRED TO GEODETIC DATUM.
 - ELEVATIONS FOR MANHOLE COVERS AND OTHER BENCH MARKS HAVE TO BE REFERRED TO THE DATUM UNLESS OTHERWISE SPECIFIED. THEY CAN BE ACCEPTED FOR FINAL DESIGN OR CONSTRUCTION PURPOSES.
 - IT IS THE RESPONSIBILITY OF THE USER OF THIS INFORMATION TO VERIFY THE ACCURACY OF THE DATA AND TO BE AWARE THAT THE DATA MAY BE DISTURBED AND THAT THEIR RELATIVE ELEVATION AND DESCRIPTION AGREE WITH THE INFORMATION SHOWN ON THIS DRAWING.

- UTILITY NOTES**
- THIS DRAWING CANNOT BE ACCEPTED AS ACKNOWLEDGING ALL OF THE UNDERGROUND UTILITIES AND IT WILL BE THE RESPONSIBILITY OF THE USER TO CONTACT THE RESPECTIVE UTILITY AUTHORITIES FOR CONFIRMATION OR LOCATION.
 - UNDERGROUND UTILITIES, AS REPORTED ON THIS DRAWING, ARE NOT BASED ON AN ACTUAL "FIELD LOCATE" BY THE RESPECTIVE UTILITY AGENCIES BUT HAVE BEEN COMPILED FROM DATA OBTAINED FROM THE CITY OF OTTAWA PUBLIC UTILITIES REGISTRY.
 - BEFORE ANY WORK INVOLVING PROBING, EXCAVATING, ETC., A FIELD LOCATE BY THE RESPECTIVE UTILITY AGENCY IS MANDATORY.



- LEGEND**
- (NSC) NATIONAL CAPITAL COMMISSION PROPERTY IDENTIFIER NUMBER
 - (STORM) STORM SEWER
 - DIA. DIAMETER
 - INV. INVERT
 - MH MANHOLE
 - HMH HYDRO MANHOLE
 - LS LAMP STANDARD
 - TMH TRAFFIC MANHOLE
 - ABAND ABANDONED
 - UP UTILITY POLE
 - FH FIRE HYDRANT
 - P PILLAR
 - PB PORTABLE BOLLARD
 - G GUY WIRE AND ANCHOR
 - B BOLLARD
 - S SIGN
 - C CONFEROUS TREE
 - D DECIDUOUS TREE
 - F FENCE POST
 - W WATERMAIN
 - UH UNDERGROUND UTILITY WIRES
 - UB UNDERGROUND HYDRO
 - UB UNDERGROUND BELL
 - G GAS MAIN
 - ST STORM SEWER
 - S SANITARY SEWER
 - C CURB

- NOTES**
- BENCHMARKS ARE GSD BENCHMARKS. ARE DERIVED FROM THE CENTRAL MERIDIAN 76° 30' W LONGITUDE, ZONE 9 OF THE 3° WTM AND 01888044 (N 5033854.864 E 368044.333) AND ARE REFERRED TO THE CENTRAL MERIDIAN 76° 30' W LONGITUDE, ZONE 9 OF THE 3° WTM ONTARIO COORDINATE SYSTEM (NAD 83).
 - BOUNDARY DIMENSIONS SHOWN ARE PER NOTES AND RECORDS OF FAIRHALL, MOFFATT AND WOODLAND LIMITED, O.L.S. (REF: 2(0) - 611769) & PLAN 4R-28468.
 - THE SURVEY REPRESENTED BY THIS PLAN WAS COMPLETED ON JANUARY 20, 2015.
 - PLAN REVISED JANUARY 22, 2015 TO SHOW AMENDED PINS.
 - PLAN REVISED JUNE 03, 2016 TO REFLECT CHANGES ON SITE - ADDED LOCATION OF ABANDONED INFRASTRUCTURE ON SITE.

JOB BENCHMARK #1
Set Magnetic Nail & Washer
on Face of Utility Pole
Elevation=61.957

JOB BENCHMARK #3
Set Magnetic Nail & Washer
on Face of Utility Pole
above Ground Elev=58.015

JOB BENCHMARK #2
Set Magnetic Nail & Washer
on Face of Utility Pole
Elevation = 57.309

#125 Baker Street
Security Camera
Generator
Concrete Pad
Decorative Concrete
(Black & Granite)

REMAINS OF
M.H. (Top=58.69)
Inv. Inaccessible

REMAINS OF
M.H. (Top=56.83)
Inv. Inaccessible

REMAINS OF
M.H. (Top=57.00)
Inv. Inaccessible

REMAINS OF
M.H. (Top=54.47)
Inv. Inaccessible

REMAINS OF
M.H. (Top=53.74)
Inv. Inaccessible

REMAINS OF
M.H. (Top=52.98)
Inv. Inaccessible

REMAINS OF
M.H. (Top=55.65)
Inv. Inaccessible

REMAINS OF
M.H. (Top=56.93)
Inv. Inaccessible

REMAINS OF
M.H. (Top=56.19)
Inv. Inaccessible

REMAINS OF
M.H. (Top=56.34)
Inv. Inaccessible

REMAINS OF
M.H. (Top=56.19)
Inv. Inaccessible

REMAINS OF
M.H. (Top=56.19)
Inv. Inaccessible

REMAINS OF
M.H. (Top=56.19)
Inv. Inaccessible

REMAINS OF
M.H. (Top=56.19)
Inv. Inaccessible

REMAINS OF
M.H. (Top=56.19)
Inv. Inaccessible

REMAINS OF
M.H. (Top=56.19)
Inv. Inaccessible

REMAINS OF
M.H. (Top=56.19)
Inv. Inaccessible

METRIC
DISTANCES AND ELEVATIONS SHOWN ON THIS PLAN ARE IN METRES
AND CAN BE CONVERTED TO FEET BY DIVIDING BY 0.3048

© COPYRIGHT 2019. REPRODUCTION, ALTERATION OR DISTRIBUTION
OF THIS PLAN WITHOUT THE WRITERS CONSENT OF FAIRHALL,
MOFFATT & WOODLAND LIMITED IS PROHIBITED.

**Fairhall
Moffatt &
Woodland**
Ontario Land Surveyors
9777 Ave A
Sturtevant and Land Information Services
100 West Beaver Creek Road, Suite 408
Richmond Hill, Ontario L4B 1N2
Tel: (905) 882-2800 Fax: (905) 882-1488
www.fmw.com

JOB No. 219700
E 367838, N 503371
REFERENCE No. 4 - 611769
Scale: 1:250
Date: 01/20/15
Drawn: J.D.M. (42)