

TREE PROTECTION REQUIREMENTS:

- PRIOR TO ANY WORK ACTIVITY WITHIN THE CRITICAL ROOT ZONE (CRZ = 10x DIAMETER OF A TREE), TREE PROTECTION FENCING MUST BE INSTALLED SURROUNDING THE CRITICAL ROOT ZONE AND REMAIN IN PLACE UNTIL THE WORK IS COMPLETE.
 - DO NOT PLACE ANY MATERIAL OR EQUIPMENT INCLUDING OUTHOUSES
 - DO NOT ATTACH ANY SIGNS, NOTICES OR POSTERS TO ANY TREE.
 - DO NOT RAISE OR LOWER THE EXISTING GRADE.
 - TUNNEL OR BORE WHEN DIGGING.
 - DO NOT DAMAGE THE ROOT SYSTEM, TRUNK OR BRANCHES OF ANY TREE.
 - ENSURE THAT EXHAUST FUMES FROM ALL EQUIPMENT ARE NOT DIRECTED TOWARD ANY TREE CANOPY.
 - DO NOT EXTEND HARD SURFACE OR SIGNIFICANTLY CHANGE LANDSCAPING.
- UNLESS PLANS ARE APPROVED BY CITY FORESTRY STAFF, FOR WORK WITHIN THE CRZ:
 - DO NOT RAISE OR LOWER THE EXISTING GRADE.
 - TUNNEL OR BORE WHEN DIGGING.
 - DO NOT DAMAGE THE ROOT SYSTEM, TRUNK OR BRANCHES OF ANY TREE.
 - ENSURE THAT EXHAUST FUMES FROM ALL EQUIPMENT ARE NOT DIRECTED TOWARD ANY TREE CANOPY.
 - DO NOT EXTEND HARD SURFACE OR SIGNIFICANTLY CHANGE LANDSCAPING.
- TREE PROTECTION FENCING MUST BE AT LEAST 1.2m IN HEIGHT, AND BE CONSTRUCTED OF RIGID OR FRAMED MATERIALS (E.G. MODULOC, STEEL PLYWOOD HOARDING, OR SNOW FENCE ON A 2"x4" WOOD FRAME) WITH POSTS 2.4m APART, SUCH THAT THE FENCE LOCATION CANNOT BE ALTERED. ALL SUPPORTS AND BRACINGS MUST BE PLACED OUTSIDE OF THE CRZ, AND INSTALLATION MUST MINIMIZE DAMAGE TO EXISTING ROOTS. (SEE DETAIL).
- THE LOCATION OF THE TREE PROTECTION FENCING MUST BE DETERMINED BY AN ARBORIST AND DETAILED ON ANY ASSOCIATED PLANS FOR THE SITE (E.G. TREE CONSERVATION REPORT, TREE DISCLOSURE REPORT, ETC). THE PLAN AND CONSTRUCTED FENCING MUST BE APPROVED BY CITY FORESTRY STAFF PRIOR TO THE COMMENCEMENT OF WORK.
- IF THE FENCED TREE PROTECTION AREA MUST BE REDUCED TO FACILITATE CONSTRUCTION, MITIGATION MEASURES MUST BE PRESCRIBED BY AN ARBORIST AND APPROVED BY CITY FORESTRY STAFF. THESE MAY INCLUDE THE PLACEMENT OF PLYWOOD, WOOD CHIPS OR STEEL PLATING OVER THE ROOTS FOR PROTECTION OR THE PROPER PRUNING AND CARE OF ROOTS WHERE ENCOUNTERED.

BY-LAWS:

ALL CITY-OWNED TREES ARE PROTECTED UNDER THE MUNICIPAL TREES AND NATURAL AREAS PROTECTION BY-LAW (2006-279), WITHIN THE URBAN AREA.

PRIVATELY-OWNED TREES GREATER THAN 50cm IN DIAMETER ON LOTS, 1 HECTARE IN SIZE OR LESS, AND TREES GREATER THAN 10cm IN DIAMETER ON LOTS GREATER THAN 1 HECTARE, ARE PROTECTED UNDER THE URBAN TREE CONSERVATION BY-LAW (2009-200).

2 TREE PROTECTION FENCING
SCALE 1:20

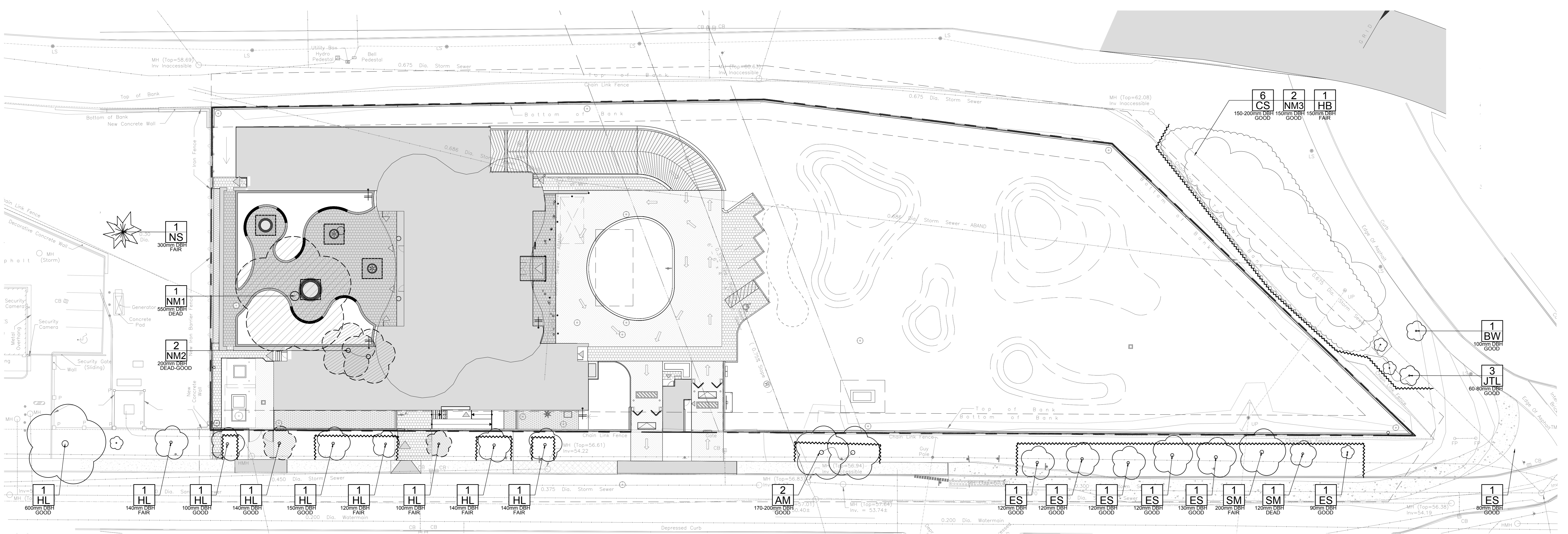
Andrew McCreight
ANDREW MCCREIGHT
MANAGER, DEVELOPMENT REVIEW CENTRAL
PLANNING, DEVELOPMENT & BUILDING SERVICES
DEVELOPMENT DEPARTMENT, CITY OF OTTAWA

APPROVED
By Andrew McCreight at 2:28 pm, Jul 30, 2024

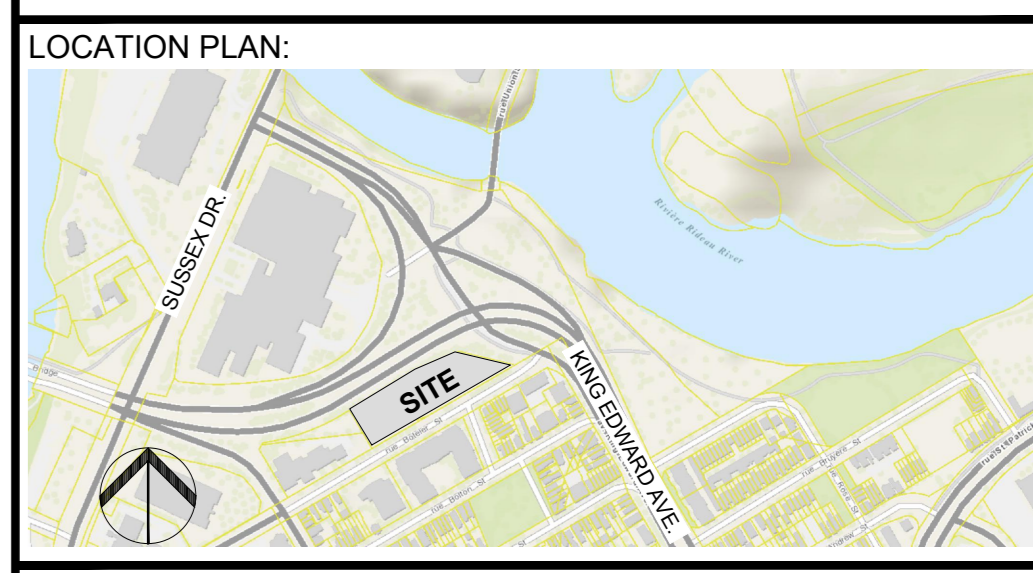
EXISTING TREE LIST							QTY	KEY
KEY	QTY	BOTANICAL NAME	COMMON NAME	SIZE	CONDITION	REMARKS	OWNERSHIP	
AM	2	Acer ginnale	Amur Maple	170-200mm DBH	GOOD	TO REMAIN	CITY OF OTTAWA (R.O.W. TREES)	
BW	1	Juglans nigra	Black Walnut	100mm DBH	GOOD	TO REMAIN	CITY OF OTTAWA	
CS	6	Picea pungens	Colorado Spruce	150-200mm DBH	GOOD	TO REMAIN	OUTSIDE PROPERTY LINE	
ES	7	Ulmus ssp.	Elm Species	80-120mm DBH	FAIR-GOOD	TO REMAIN	CITY OF OTTAWA (R.O.W. TREES)	
HB	1	Cedrus occidentalis	Honey Locust	100mm DBH	FAIR	TO REMAIN, LEAF GALL	CITY OF OTTAWA	
HL	9	Cercidiphyllum japonense	Honey Locust	100-500mm DBH	FAIR-GOOD	7 TO REMAIN, 2 TO BE REMOVED	CITY OF OTTAWA (R.O.W. TREES)	
JTL	3	Syringa reticulata	Japanese Tree Lilac	60-80mm DBH	GOOD	TO REMAIN	OUTSIDE PROPERTY LINE	
NM1	1	Acer platanoides	Norway Maple	150-500mm DBH	DEAD	TO BE REMOVED	PRIVATE (PROJECT SITE - 187 BOTELER STREET)	
NM2	2	Acer platanoides	Norway Maple	150-500mm DBH	DEAD-GOOD	TO BE REMOVED	PRIVATE (PROJECT SITE - 187 BOTELER STREET)	
NM3	1	Acer platanoides	Norway Maple	150-500mm DBH	GOOD	TO REMAIN	CITY OF OTTAWA	
NS	1	Picea abies	Norway Spruce	300mm DBH	FAIR	TO REMAIN	PRIVATE, 125 BOTELER STREET	
SM	2	Acer saccharum	Sugar Maple	120-200mm DBH	DEAD-GOOD	TO REMAIN	CITY OF OTTAWA (R.O.W. TREES)	

LEGEND

- PROPERTY LINE
- EXISTING TREE TO BE REMOVED
- EXISTING DECIDUOUS TREE TO REMAIN
- EXISTING CONIFEROUS TREE TO REMAIN
- EXISTING TREE GROUPING TREE TO REMAIN
- TREE PROTECTION FENCING
- TYPE 1 UNIT PAVERS
- TYPE 4 UNIT PAVERS
- PROPOSED ASPHALT DRIVEWAY (REFER TO CIVIL)
- PROPOSED CONCRETE (REFER TO CIVIL)
- PROPOSED INTERSTONE
- EXISTING CONCRETE SIDEWALK
- PROPOSED C.I.P. CONCRETE RETAINING PAVEMENT WALL
- PROPOSED GRANITE SEATING TOP
- 300mm WIDE CONCRETE CURB, 150mm ABOVE GRADE, 150mm DEPTH ON MEDIUM SAND BLAST FINISH (REFER TO CIVIL)



1 TREE CONSERVATION REPORT
SCALE 1:250



ARCHITECTS
grc architects
47 Clarence Street, Suite 401
Ottawa, Ontario K1N 9K1
t: 613-241-8203 f: 613-241-4180
info@grcarchitects.com www.grcarchitects.com

GENERAL NOTES

- IT IS THE RESPONSIBILITY OF THE APPROPRIATE CONTRACTOR OR OFFICIAL TO REPORT ANY ERRORS, OMISSIONS OR DISCREPANCIES ON THIS PLAN WITH ACTUAL SITE CONDITIONS TO THE LANDSCAPE ARCHITECT BEFORE PROCEEDING WITH CONSTRUCTION.
- THE CONTRACTOR IS TO NOTIFY ALL UTILITY COMPANIES AND AUTHORITIES PRIOR TO ANY EXCAVATION AND ASCERTAIN LOCATIONS OF UNDERGROUND SERVICES.
- THE CONTRACTOR IS TO REINSTATE ALL AREAS AND ITEMS DAMAGED AS A RESULT OF CONSTRUCTION ACTIVITY.
- THE CONTRACTOR IS TO COMPLY WITH ALL PERTINENT CODES AND BY-LAWS.
- THE CONTRACTOR IS TO MAINTAIN A POSITIVE SURFACE RUN-OFF THROUGHOUT THE ENTIRE CONSTRUCTION PERIOD.
- THE LANDSCAPE ARCHITECT IS NOT RESPONSIBLE FOR SUBSURFACE CONDITIONS.
- THE CONTRACTOR IS TO IDENTIFY ALL EXISTING TREES TO REMAIN ON SITE WITH THE LANDSCAPE ARCHITECT PRIOR TO CONSTRUCTION.
- THE CONTRACTOR IS TO STAKE THE PROPOSED LOCATION OF ALL PLANT MATERIAL IN CONJUNCTION WITH THE LANDSCAPE ARCHITECT PRIOR TO EXCAVATION.
- MINIMUM DISTANCES FOR SELECTED DECIDUOUS TREES ARE AS FOLLOWS:
 - BUILDING FOUNDATIONS 7.5M
 - SIDEWALKS 1.5M
 - PUBLIC STREETS 2.5M
 - UNDERGROUND INFRASTRUCTURE 2.0M
- ALL TREES WITHIN 1M OF UNDERGROUND UTILITY TRENCHES ARE TO BE EXCAVATED BY HAND.
- REMOVE ALL PROTECTIVE WRAPPING FROM TREE TRUNKS AFTER INSTALLATION.
- STAKING OF TREES SHALL ONLY BE PERFORMED IF NECESSARY.
- ENSURE THAT MULCH IS PULLED BACK A MIN. DISTANCE OF 75MM FROM BASE OF TREE TRUNK.

No.	Issue	Date	DR	CK
7	REISSUED FOR SITE PLAN CONTROL APPLICATION	11/03/23	LC	JL
6	REISSUED FOR SITE PLAN CONTROL	08/08/23	SL	JL
5	REVISED AS PER CITY 2nd REVIEW COMMENTS	04/14/23	LC	JL
4	REISSUED FOR SITE PLAN CONTROL	08/26/22	SL	JL
3	ISSUED FOR BUILDING PERMIT	04/12/22	LC	JL
2	ISSUED FOR 99%	03/18/22	LC	JL
1	ISSUED FOR SITE PLAN CONTROL APPLICATION	03/01/22	LC	JL

JAMES B. LENNOX & ASSOCIATES INC.
LANDSCAPE ARCHITECTS
332 CARLING AVENUE OTTAWA, ONTARIO K2H 5A8
Tel. (613) 722-5168 Fax. (1-866) 343-3942

PROJECT
QATAR NEW EMBASSY & CONSULATE
BOTELER STREET
OTTAWA, ON

DRAWING
TREE CONSERVATION REPORT

STAMP

SCALE

SEE PLAN

START DATE

JUNE, 2019

PROJECT NO.

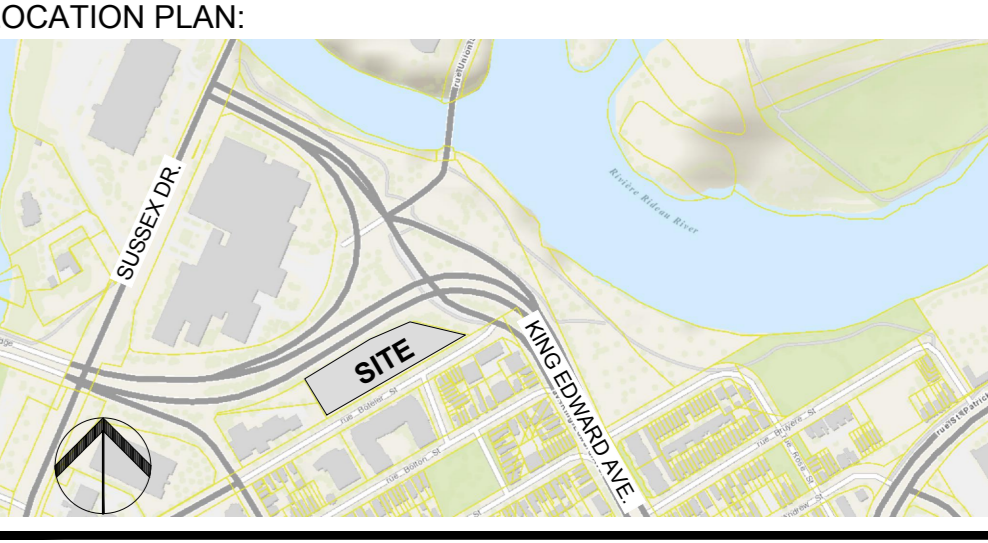
20-GR-2018

PROJECT NORTH

DRAWING NO.

TCR

PLLOT SIZE A.0



ARCHITECTS
grc architects
47 Clarence Street, Suite 401
Ottawa, Ontario K1N 9K1
t: 613-241-8203 f: 613-241-4180
info@grcarchitects.com www.grcarchitects.com

- GENERAL NOTES
- IT IS THE RESPONSIBILITY OF THE APPROPRIATE CONTRACTOR OR OFFICIAL TO REPORT ANY ERRORS, OMISSIONS OR DISCREPANCIES ON THIS PLAN WITH ACTUAL SITE CONDITIONS TO THE LANDSCAPE ARCHITECT BEFORE PROCEEDING WITH CONSTRUCTION.
 - THE CONTRACTOR IS TO NOTIFY ALL UTILITY COMPANIES AND AUTHORITIES PRIOR TO ANY EXCAVATION AND ASCERTAIN LOCATIONS OF UNDERGROUND SERVICES.
 - THE CONTRACTOR IS TO REINSTATE ALL AREAS AND ITEMS DAMAGED AS A RESULT OF CONSTRUCTION ACTIVITY.
 - THE CONTRACTOR IS TO COMPLY WITH ALL PERTINENT CODES AND BY-LAWS.
 - THE CONTRACTOR IS TO MAINTAIN A POSITIVE SURFACE RUN-OFF THROUGHOUT THE ENTIRE CONSTRUCTION PERIOD.
 - THE LANDSCAPE ARCHITECT IS NOT RESPONSIBLE FOR SUBSURFACE CONDITIONS.
 - THE CONTRACTOR IS TO IDENTIFY ALL EXISTING TREES TO REMAIN ON SITE WITH THE LANDSCAPE ARCHITECT PRIOR TO CONSTRUCTION.
 - THE CONTRACTOR IS TO STAKE THE PROPOSED LOCATION OF ALL PLANT MATERIAL IN CONJUNCTION WITH THE LANDSCAPE ARCHITECT PRIOR TO EXCAVATION.
 - MINIMUM DISTANCES FOR SELECTED DECIDUOUS TREES ARE AS FOLLOWS:
 - BUILDING FOUNDATIONS 7.5M
 - SIDEWALKS 1.5M
 - PUBLIC STREETS 2.5M
 - UNDERGROUND INFRASTRUCTURE 2.0M
 - ALL TREES WITHIN 1M OF UNDERGROUND UTILITY TRENCHES ARE TO BE EXCAVATED BY HAND.
 - REMOVE ALL PROTECTIVE WRAPPING FROM TREE TRUNKS AFTER INSTALLATION.
 - STAKING OF TREES SHALL ONLY BE PERFORMED IF NECESSARY.
 - ENSURE THAT MULCH IS PULLED BACK A MIN. DISTANCE OF 75MM FROM BASE OF TREE TRUNK.

No.	Issue	Date	DR	CK
7	REISSUED FOR SITE PLAN CONTROL APPLICATION	11/03/23	LC	JL
6	REISSUED FOR SITE PLAN CONTROL	08/08/23	SL	JL
5	REVISED AS PER CITY 2nd REVIEW COMMENTS	04/14/23	LC	JL
4	REISSUED FOR SITE PLAN CONTROL	08/26/22	SL	JL
3	ISSUED FOR BUILDING PERMIT	04/12/22	LC	JL
2	ISSUED FOR 99%	03/18/22	LC	JL
1	ISSUED FOR SITE PLAN CONTROL APPLICATION	03/01/22	LC	JL

JAMES B. LENNOX & ASSOCIATES INC.
LANDSCAPE ARCHITECTS
332 CARLING AVENUE OTTAWA, ONTARIO K3H 5A8
Tel. (613) 722-5168 Fax. 1(866) 343-3942

PROJECT
QATAR NEW EMBASSY & CONSULATE
BOTELER STREET
OTTAWA, ON

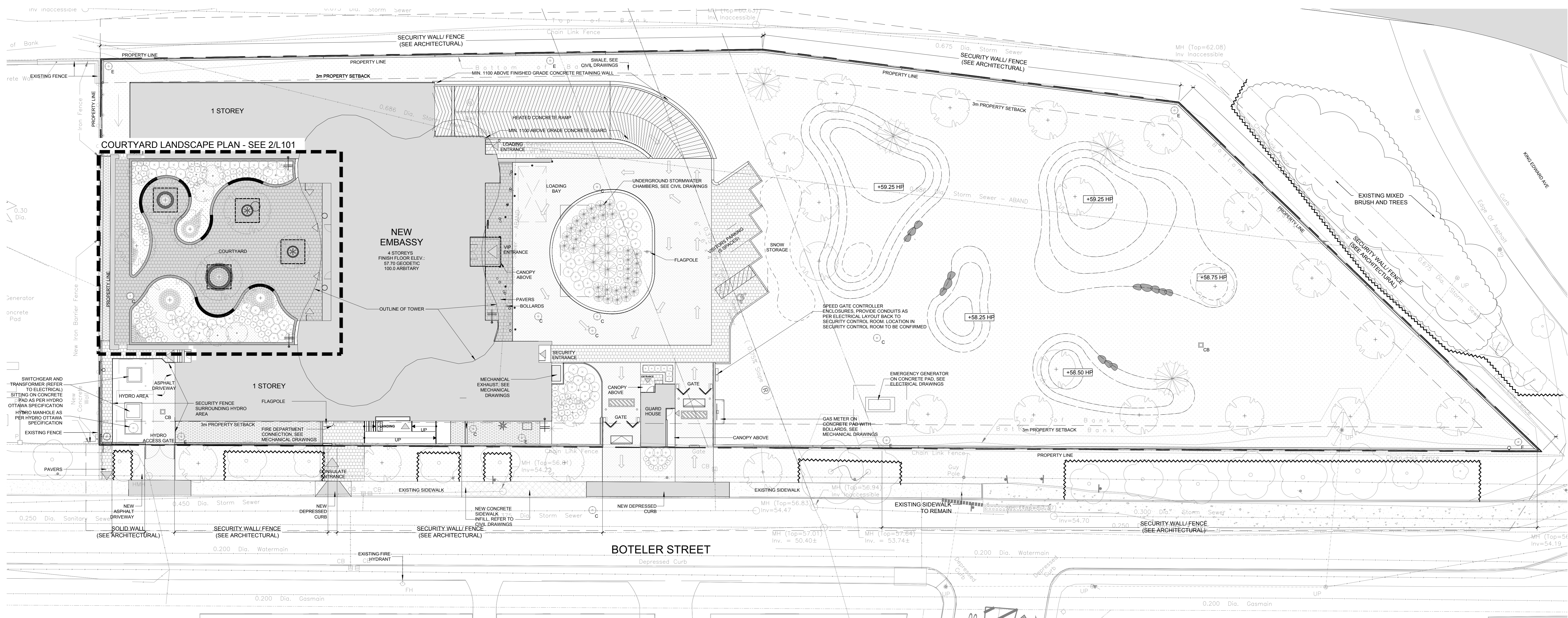
DRAWING
LANDSCAPE PLAN

STAMP	SCALE
	SEE PLAN
	START DATE
	JUNE, 2019
	PROJECT NO.
	20-GRC-2018

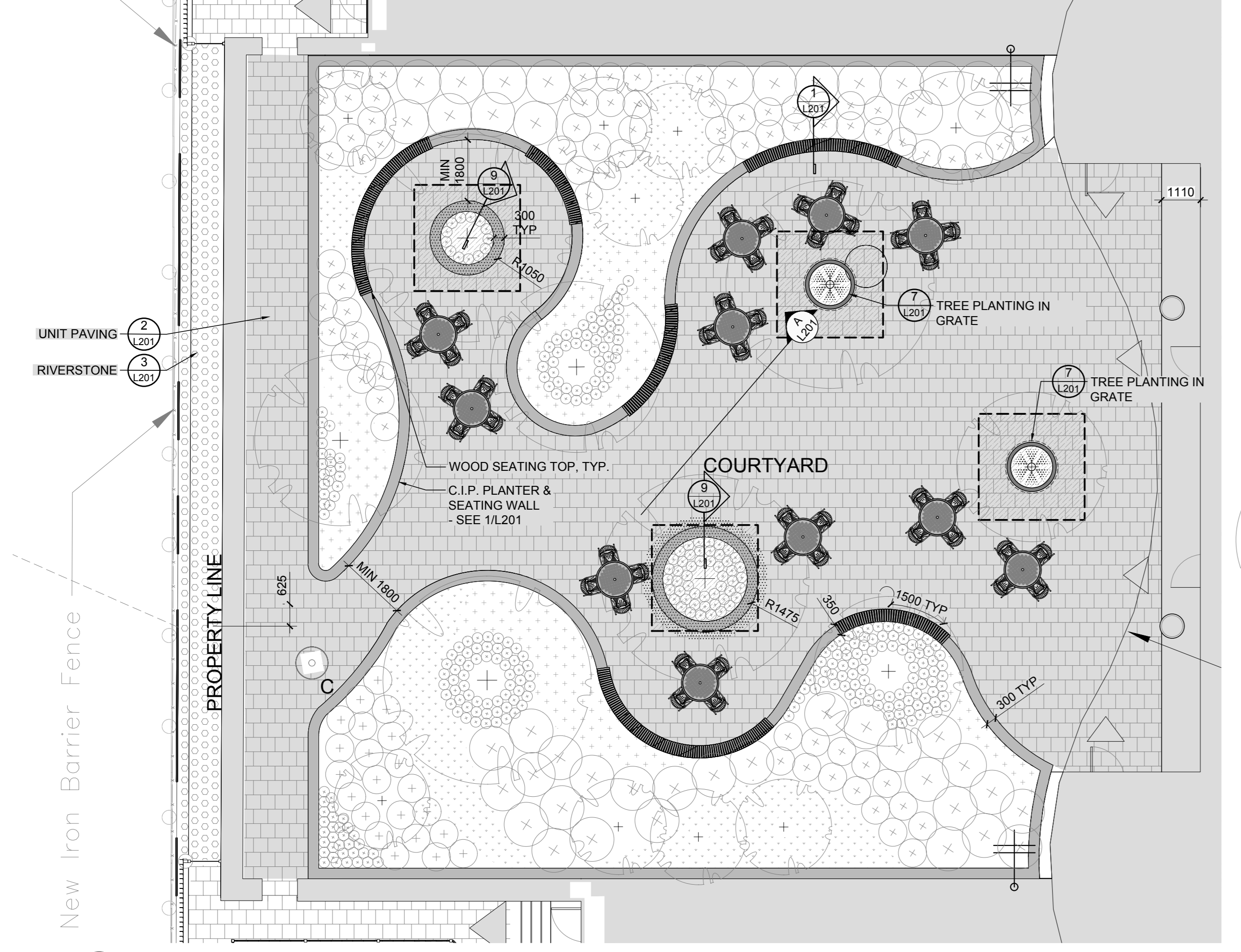
PROJECT NORTH

DRAWING NO.
L101
PLOT SIZE A.0

- LEGEND
- PROPERTY LINE
 - TYPE I UNIT PAVERS
 - TYPE II UNIT PAVERS
 - ASPHALT DRIVEWAY (REFER TO CIVIL)
 - CONCRETE (REFER TO CIVIL)
 - PROPOSED RIVERSTONE
 - EXISTING CONCRETE SIDEWALK
 - PROPOSED SOD
 - C.I.P. CONCRETE RETAINING/PLANTER WALL
 - PROPOSED SEATING BOULDERS
 - PROPOSED BERMS (0.25M INTERVAL)
 - TREE PROTECTION FENCING
 - EXISTING TREE GROUPING TO REMAIN
 - STRUCTURAL SOIL (3000mm x 3000mm)
 - 300mm WIDE CONCRETE CURB, 100mm ABOVE GRADE, 450mm DEPTH C/W MEDIUM SAND-BLAST FINISH (REFER TO SL201)
 - EXISTING TREE TO REMAIN
 - DECIDUOUS TREE
 - CONIFEROUS TREE
 - SHRUB & PERENNIAL PLANTING
 - PERENNIAL/GROUNDCOVER PLANTING
 - IRRIGATION SOURCE
 - HOSE BIB REFER TO MECH



1 LANDSCAPE PLAN
SCALE 1:200



2 COURTYARD LANDSCAPE PLAN
SCALE 1:100

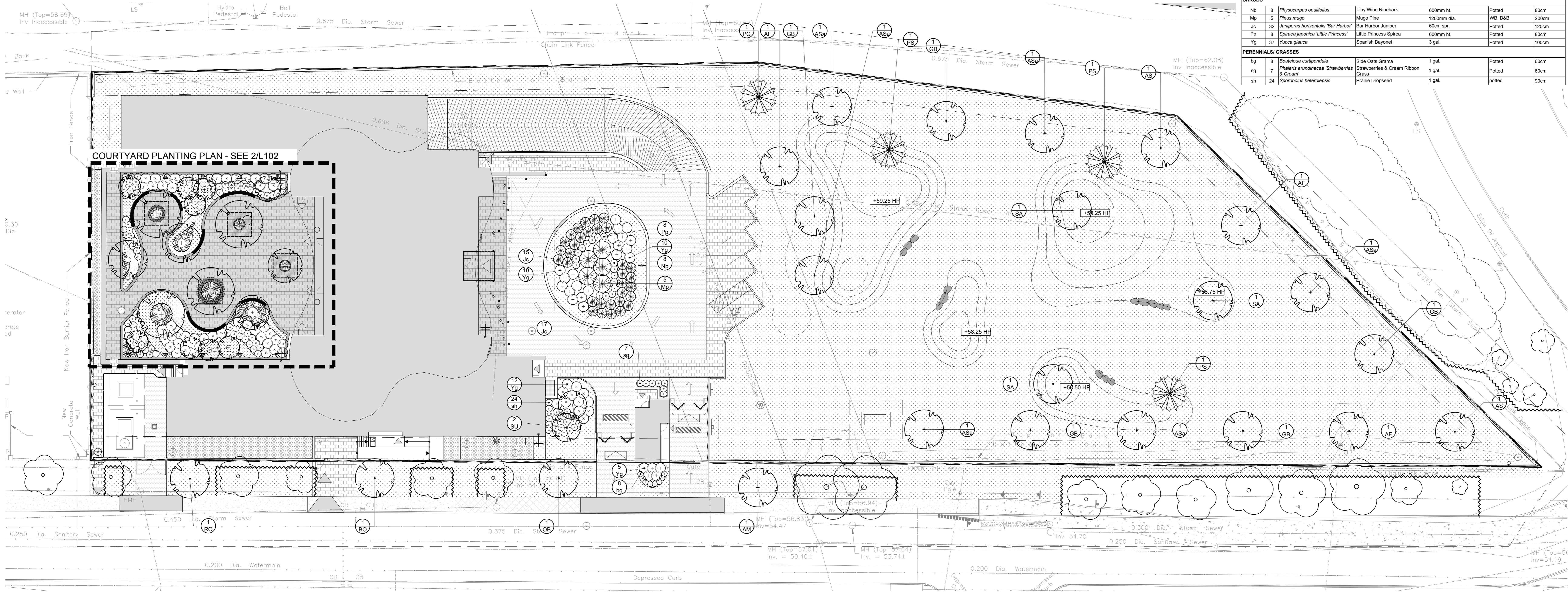
Andrew McCreight
ANDREW MCCREIGHT
MANAGER, DEVELOPMENT REVIEW CENTRAL
PLANNING, DEVELOPMENT & BUILDING SERVICES
DEVELOPMENT DEPARTMENT, CITY OF OTTAWA

APPROVED
By Andrew McCreight at 2:28 pm, Jul 30, 2024

LEGEND

	PROPERTY LINE		C.I.P. CONCRETE RETAINING PLANTER WALL		EXISTING TREE TO REMAIN
	TYPE I UNIT PAVERS		PROPOSED SEATING BOULDERS		DECIDUOUS TREE
	TYPE II UNIT PAVERS		PROPOSED BERMS (0.25M INTERVAL)		CONIFEROUS TREE
	ASPHALT DRIVEWAY (REFER TO CIVIL)		TREE PROTECTION FENCING		SHRUB & PERENNIAL PLANTING
	CONCRETE (REFER TO CIVIL)		EXISTING TREE GROUPING TO REMAIN		PERENNIAL/GROUNDCOVER PLANTING
	PROPOSED RIVERSTONE		STRUCTURAL SOIL (3000mm x 3000mm)		
	EXISTING CONCRETE SIDEWALK				
	PROPOSED SOD				

	IRRIGATION SOURCE
	HOSE BIB REFER TO MECH

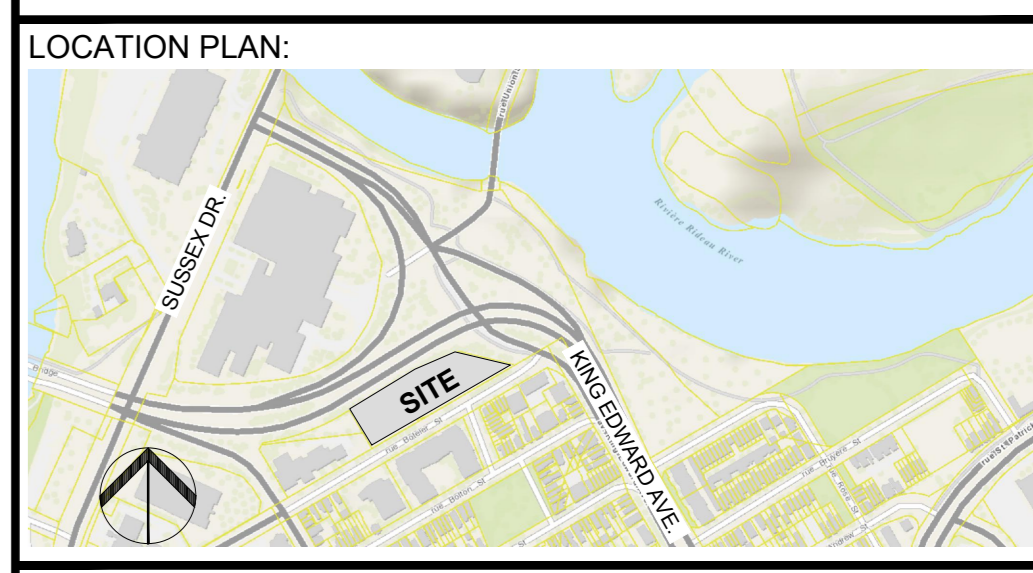


1 PLANTING PLAN
SCALE 1:200

PROPOSED PLANT LIST

KEY	QTY	BOTANICAL NAME	COMMON NAME	SIZE	CONDITION	SPACING
CONIFEROUS TREES						
PG	1	<i>Pinus glauca</i>	White Spruce	250cm	WB	n/a
PS	3	<i>Pinus sylvestris</i>	Scots Pine	200cm	WB	n/a
DECIDUOUS TREES (LARGE)						
AF	3	<i>Acer x freemantli 'Autumn Blaze'</i>	Autumn Blaze Maple	60mm dia.	WB, B&B	n/a
AM	1	<i>Acer ginnala</i>	Amur Maple	60mm dia.	WB, B&B	n/a
AS	2	<i>Acer saccharum</i>	Sugar Maple	60mm dia.	WB, B&B	n/a
ASa	6	<i>Acer saccharinum</i>	Spice Maple	60mm dia.	WB, B&B	n/a
BO	1	<i>Quercus macrocarpa</i>	Bur Oak	60mm dia.	WB, B&B	n/a
GB	5	<i>Ginkgo biloba</i>	Maidenhair Tree	60mm dia.	WB, B&B	n/a
GB	1	<i>Aesculus glabra</i>	Ohio buckeye	60mm dia.	WB, B&B	n/a
RO	1	<i>Quercus rubra</i>	Red Oak	60mm dia.	WB, B&B	n/a
SA	3	<i>Salix alba 'Trinity'</i>	Weeping Golden Willow	60mm dia.	WB, B&B	n/a
DECIDUOUS TREES (SMALL)						
SU	2	<i>Rhus typhina</i>	Staghorn Sumac	2000mm	WB, B&B, Specimen	n/a
SHRUBS						
Nb	8	<i>Physocarpus opulifolius</i>	Tiny Wine Nerebar	600mm ht.	Potted	80cm
Mp	5	<i>Pinus mugo</i>	Mugo Pine	1200mm dia.	WB, B&B	200cm
Jc	32	<i>Juniperus horizontalis 'Bar Harbor'</i>	Bar Harbor Juniper	60cm spr.	Potted	120cm
Pp	8	<i>Spiraea japonica 'Little Princess'</i>	Little Princess Spirea	600mm ht.	Potted	80cm
Yg	37	<i>Yucca glauca</i>	Spanish Bayonet	3 gal.	Potted	100cm
PERENNIALS/ GRASSES						
Dg	8	<i>Dioclea curtipendula</i>	Silk Oak Grass	1 gal.	Potted	60cm
Ph	7	<i>Pharitis arundinacea 'Strawberries & Cream'</i>	Strawberries & Cream Ribbon Grass	1 gal.	Potted	60cm
sh	24	<i>Sporobolus heterolepis</i>	Pearle Dropseed	1 gal.	Potted	60cm

وزارة الخارجية
Ministry of Foreign Affairs
State of Qatar دولة قطر



grc architects
47 Clarence Street, Suite 401
Ottawa, Ontario K1N 9K1
t: 613-241-8203 f: 613-241-4180
info@grcarchitects.com www.grcarchitects.com

- GENERAL NOTES**
- IT IS THE RESPONSIBILITY OF THE APPROPRIATE CONTRACTOR OR OFFICIAL TO REPORT ANY ERRORS, OMISSIONS OR DISCREPANCIES ON THIS PLAN WITH ACTUAL SITE CONDITIONS TO THE LANDSCAPE ARCHITECT BEFORE PROCEEDING WITH CONSTRUCTION.
 - THE CONTRACTOR IS TO NOTIFY ALL UTILITY COMPANIES AND AUTHORITIES PRIOR TO ANY EXCAVATION AND ASCERTAIN LOCATIONS OF UNDERGROUND SERVICES.
 - THE CONTRACTOR IS TO REINSTATE ALL AREAS AND ITEMS DAMAGED AS A RESULT OF CONSTRUCTION ACTIVITY.
 - THE CONTRACTOR IS TO COMPLY WITH ALL PERTINENT CODES AND BY-LAWS.
 - THE CONTRACTOR IS TO MAINTAIN A POSITIVE SURFACE RUN-OFF THROUGHOUT THE ENTIRE CONSTRUCTION PERIOD.
 - THE LANDSCAPE ARCHITECT IS NOT RESPONSIBLE FOR SUBSURFACE CONDITIONS.
 - THE CONTRACTOR IS TO IDENTIFY ALL EXISTING TREES TO REMAIN ON SITE WITH THE LANDSCAPE ARCHITECT PRIOR TO CONSTRUCTION.
 - THE CONTRACTOR IS TO STAKE THE PROPOSED LOCATION OF ALL PLANT MATERIAL IN CONJUNCTION WITH THE LANDSCAPE ARCHITECT PRIOR TO EXCAVATION.
 - MINIMUM DISTANCES FOR SELECTED DECIDUOUS TREES ARE AS FOLLOWS:
- BUILDING FOUNDATIONS 7.5M
- SIDEWALKS 1.5M
- PUBLIC STREETS 2.5M
- UNDERGROUND INFRASTRUCTURE 2.0M
 - ALL TREES WITHIN 1M OF UNDERGROUND UTILITY TRENCHES ARE TO BE EXCAVATED BY HAND.
 - REMOVE ALL PROTECTIVE WRAPPING FROM TREE TRUNKS AFTER INSTALLATION.
 - STAKING OF TREES SHALL ONLY BE PERFORMED IF NECESSARY.
 - ENSURE THAT MULCH IS PULLED BACK A MIN. DISTANCE OF 75MM FROM BASE OF TREE TRUNK.

7	REISSUED FOR SITE PLAN CONTROL APPLICATION	11/03/23	LC	JL
6	REISSUED FOR SITE PLAN CONTROL	08/08/23	SL	JL
5	REVISED AS PER CITY 2nd REVIEW COMMENTS	04/14/23	LC	JL
4	REISSUED FOR SITE PLAN CONTROL	08/26/22	SL	JL
3	ISSUED FOR BUILDING PERMIT	04/12/22	LC	JL
2	ISSUED FOR 99%	03/18/22	LC	JL
1	ISSUED FOR SITE PLAN CONTROL APPLICATION	03/01/22	LC	JL
No.	Issue	Date	DR	CK

JAMES B. LENNOX & ASSOCIATES INC.
LANDSCAPE ARCHITECTS
332 CARRING AVENUE OTTAWA, ONTARIO K3H 5A8
Tel. (613) 722-5168 Fax. 1(866) 343-3942

PROJECT
QATAR NEW EMBASSY & CONSULATE
BOTELER STREET
OTTAWA, ON

DRAWING
LANDSCAPE PLAN

STAMP

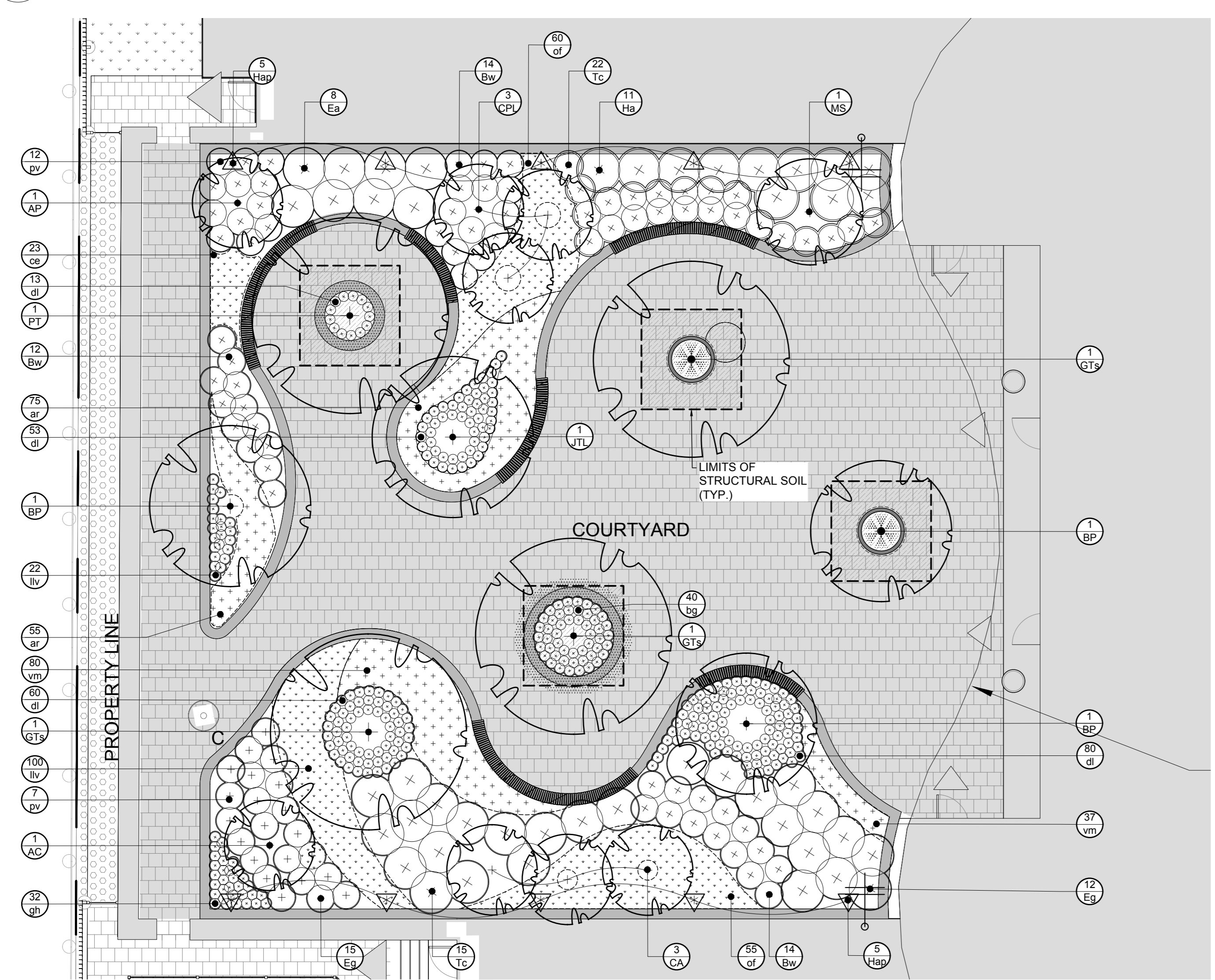
SCALE
SEE PLAN

START DATE
JUNE, 2019

PROJECT NO.
20-GR-2018

PROJECT NORTH

DRAWING NO.
L102
PLOT SIZE A.0



LEGEND

	TYPE I UNIT PAVERS		TREE GRATE
	TYPE II UNIT PAVERS		PROPOSED LARGE DECIDUOUS TREE 60mm Ø CALIPER
	C.I.P. CONCRETE RETAINING PLANTER WALL		PROPOSED SMALL DECIDUOUS TREE 15 GALLON POT
	SHRUB & PERENNIAL PLANTING		PERENNIAL/GROUNDCOVER PLANTING
	LANDSCAPE CATCH BASIN (REFER TO CIVIL)		IRRIGATION SOURCE
	300mm WIDE CONCRETE CURB, 100mm ABOVE GRADE, 400mm DEPTH C/W MEDIUM SAND-BLAST FINISH (REFER TO 9/201)		HOSE BIB REFER TO MECH

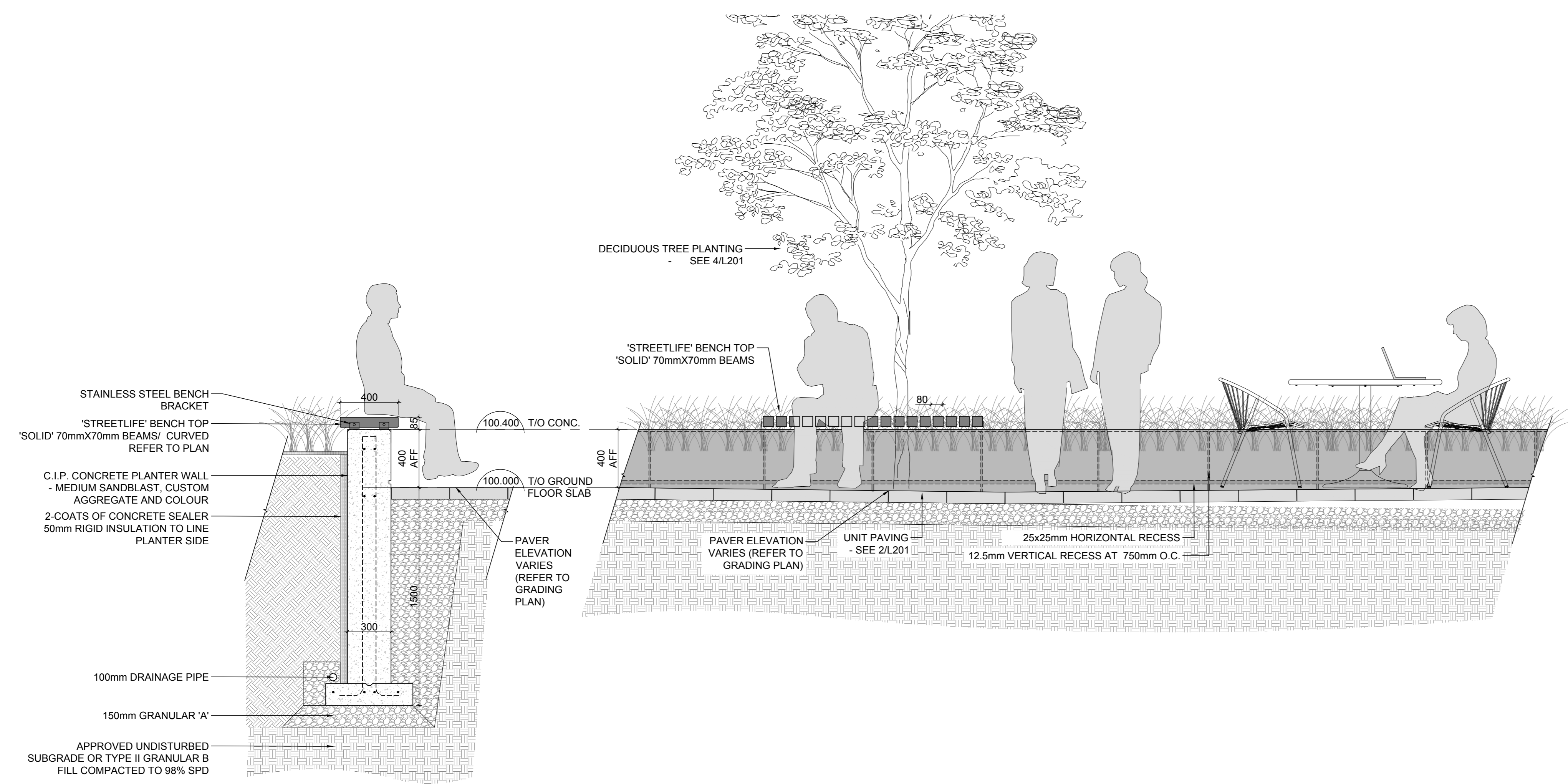
PROPOSED PLANT LIST - COURTYARD

KEY	QTY	BOTANICAL NAME	COMMON NAME	SIZE	CONDITION	SPACING
DECIDUOUS TREES (LARGE)						
BP	3	<i>Betula populifolia</i>	Gray Birch	50mm dia.	Clump, WB, Specimen	n/a
GTS	3	<i>Cedrela tomentosa var. neriis</i>	Shademaster Honeylocust	60mm dia.	WB, B&B, Specimen	n/a
PT	1	<i>Populus alba</i>	White Poplar	60mm dia.	WB, Specimen	n/a
DECIDUOUS TREES (SMALL)						
AC	17	<i>Acer palmatum 'Bloodgood'</i>	Bloodgood Japanese Maple	200mm ht.	WB, B&B, Treform	n/a
AP	1	<i>Acer palmatum 'Bloodgood'</i>	Bloodgood Japanese Maple	200mm ht.	B&B, Specimen	n/a
CA	3	<i>Cornus alternifolia</i>	Pagoda Dogwood	175cm ht., 10 gal.	Potted, Treform	n/a
CPL	3	<i>Syringa vulgaris 'Katharine Havemeyer'</i>	Katharine Havemeyer Lilac	200cm ht.	WB, B&B	n/a
JTL	1	<i>Syringa reticulata</i>	Japanese Tree Lilac	200cm ht.	WB, B&B	n/a
MS	1	<i>Magnolia stellata 'Royal Star'</i>	Royal Star Magnolia	200cm ht.	B&B, Specimen	n/a
SHRUBS						
Bw	43	<i>Buxus 'Green Velvet'</i>	Green Velvet Boxwood	3 gal.	Potted	80cm
Ea	8	<i>Euroymnus alatus 'Compactus'</i>	Dwarf Burning Bush	60cm ht.	p	100cm
EG	27	<i>Euroymnus alatus 'Blonde Ambition'</i>	Blonde Ambition Grama Grass	3 gal.	Potted	60cm
Ha	11	<i>Hydrangea arborescens 'Annabelle'</i>	Annabelle Hydrangea	60cm ht., 7 gal.	Potted	120cm
Tc	37	<i>Taxus cuspidata 'Nana'</i>	Dwarf Japanese Yew	50cm spr.	B&B	80cm
PERENNIALS/ GRASSES						
lg	40	<i>Bouteloua gracilis 'Blonde Ambition'</i>	Blonde Ambition Grama Grass	1 gal.	Potted	30cm
ce	23	<i>Carex eburnea</i>	Bristle Leaf Sedge	1 gal.	Potted	20cm
dl	206	<i>Hemerocallis 'Stella D'Or'</i>	Stella D'Or Day Lily	2 gal.	Potted	50cm
gn	32	<i>Hosta 'Guacamole'</i>	Guacamole Hosta	1 gal.	Potted	60cm
lv	122	<i>Convallaria majalis</i>	Lily-of-the-valley	1 gal.	Potted	40cm
pv	19	<i>Panicum virgatum 'Shenandoah'</i>	Shenandoah Switch Grass	1 gal.	Potted	90cm
of	115	<i>Matteuccia struthiopteris</i>	Ostrich Fern	2 gal.	Potted	60cm
GROUND COVER						
ar	130	<i>Aster reptans</i>	Bugweed	1 gal.	Potted	40cm
vm	117	<i>Vinca minor</i>	Periwinkle	18cm	pan	40cm
VINES						
Hap	10	<i>Hydrangea anomala petiolaris</i>	Climbing Hydrangea	15 gal.	Potted, Staked	n/a

ANDREW MCCREIGHT
MANAGER, DEVELOPMENT REVIEW CENTRAL
PLANNING, DEVELOPMENT & BUILDING SERVICES
DEVELOPMENT DEPARTMENT, CITY OF OTTAWA

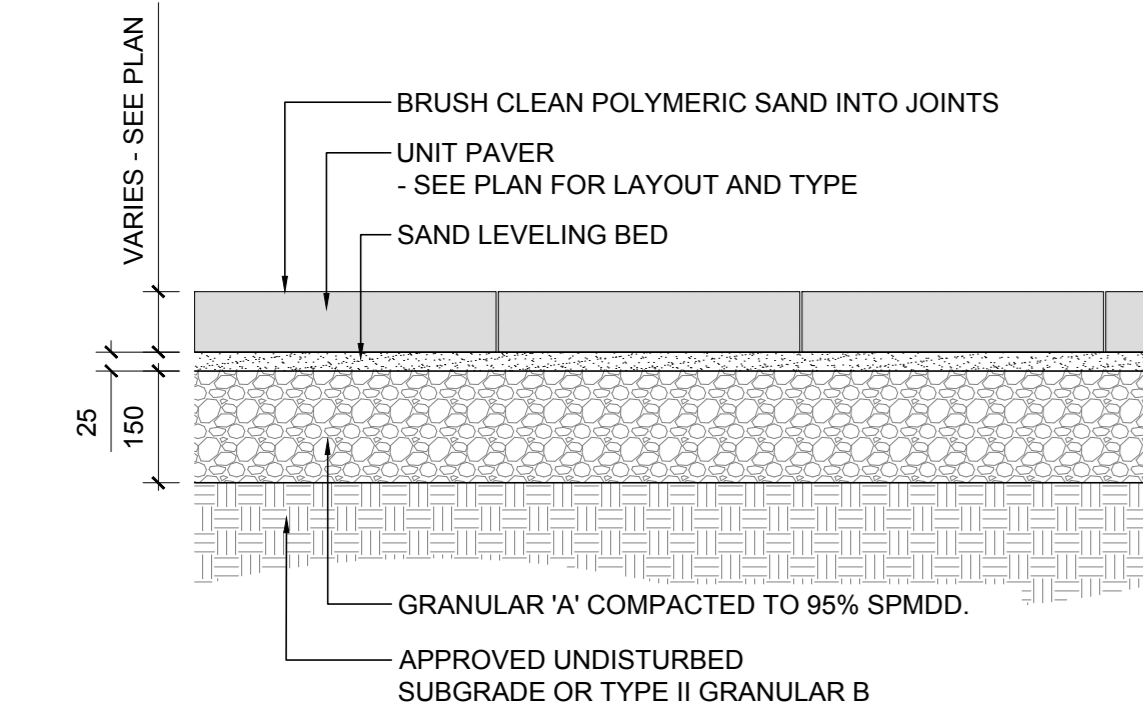
APPROVED
By Andrew McCreight at 2:28 pm, Jul 30, 2024

2 COURTYARD PLANTING PLAN
SCALE 1:100

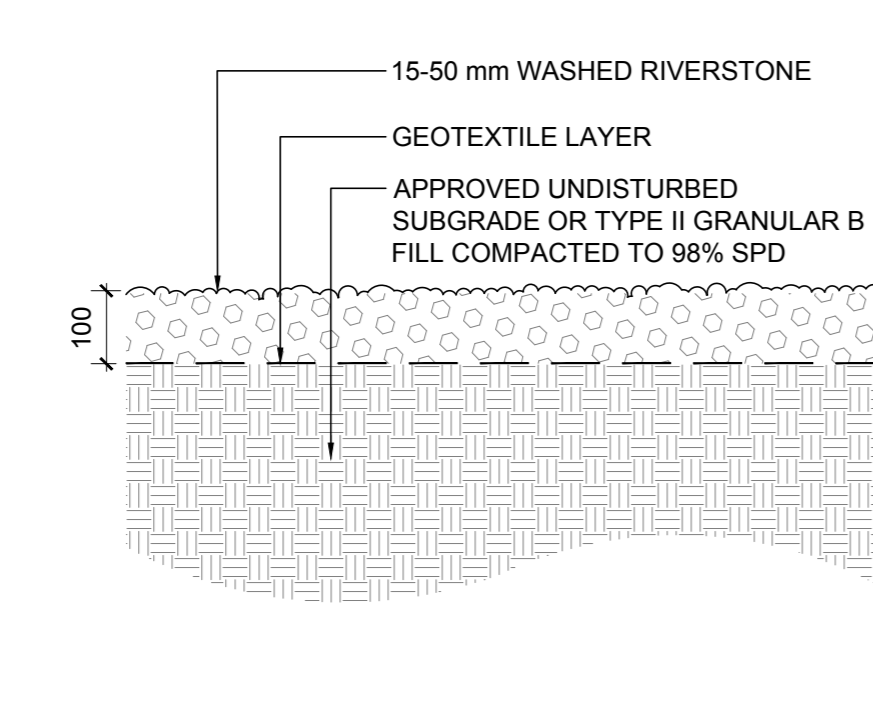


1
C.I.P. PLANTER & SEATING WALL
SCALE 1:20

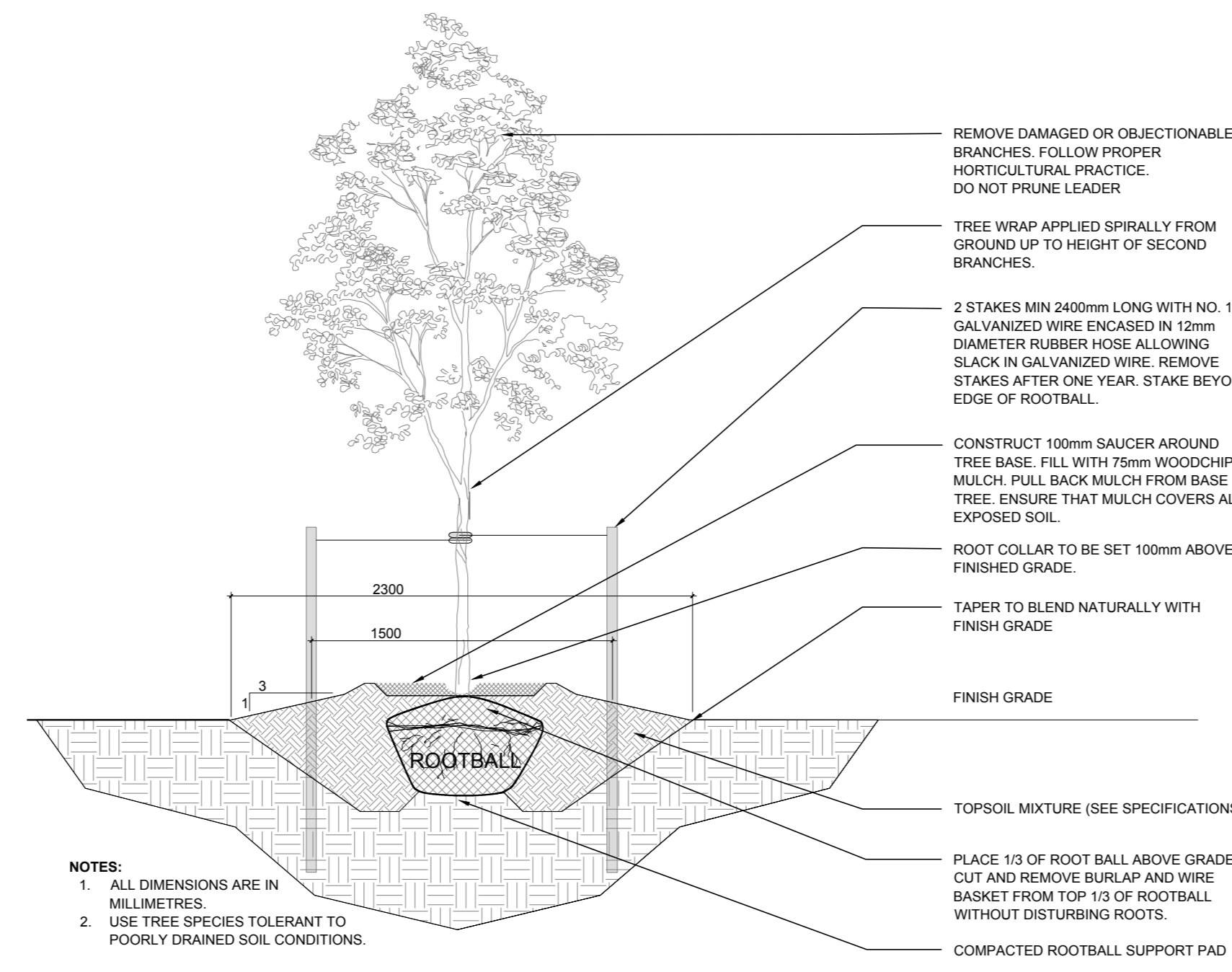
A
COURTYARD PLANTER & SEATING WALL ELEVATION
SCALE 1:20



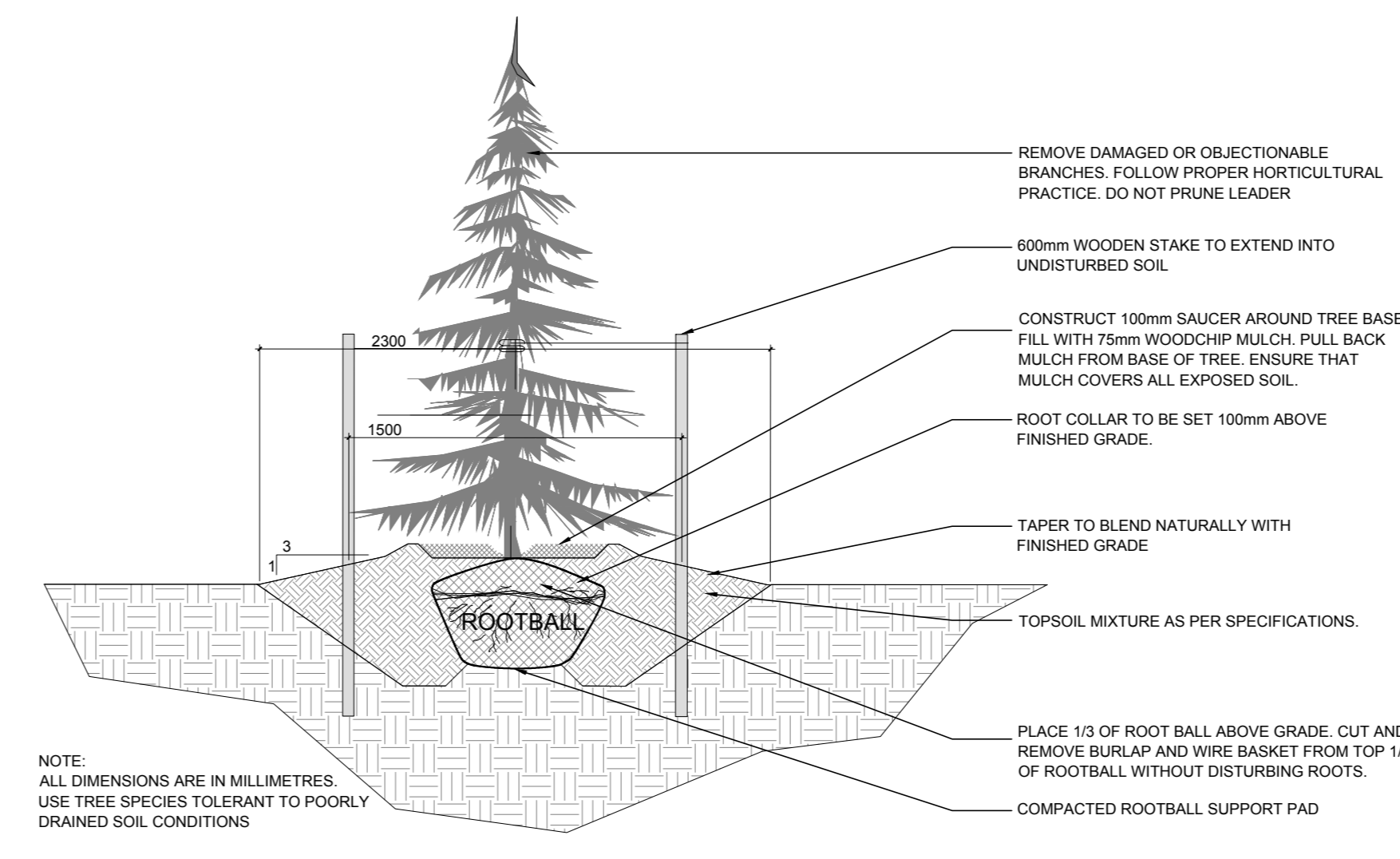
2
UNIT PAVING
SCALE 1:10



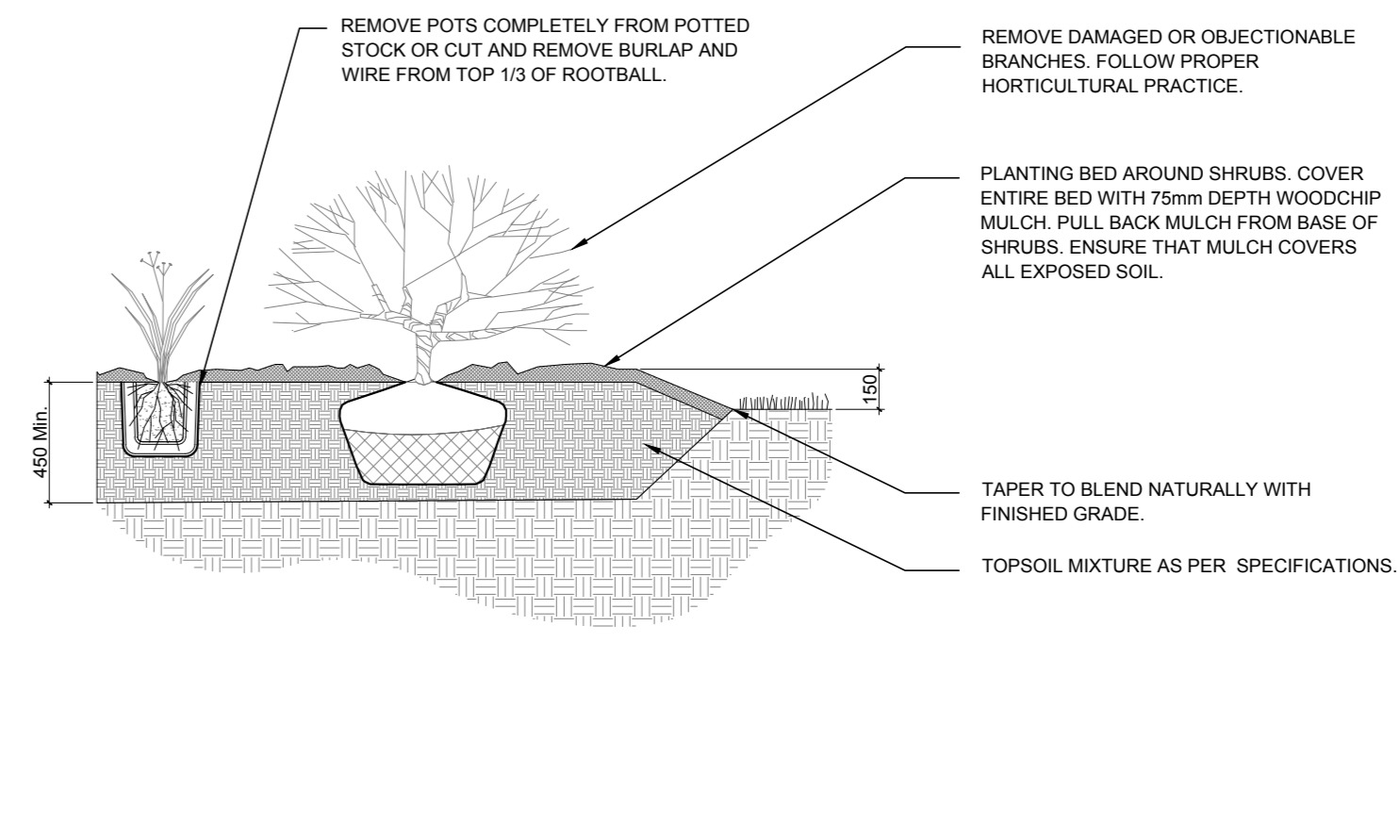
3
RIVERSTONE
SCALE 1:10



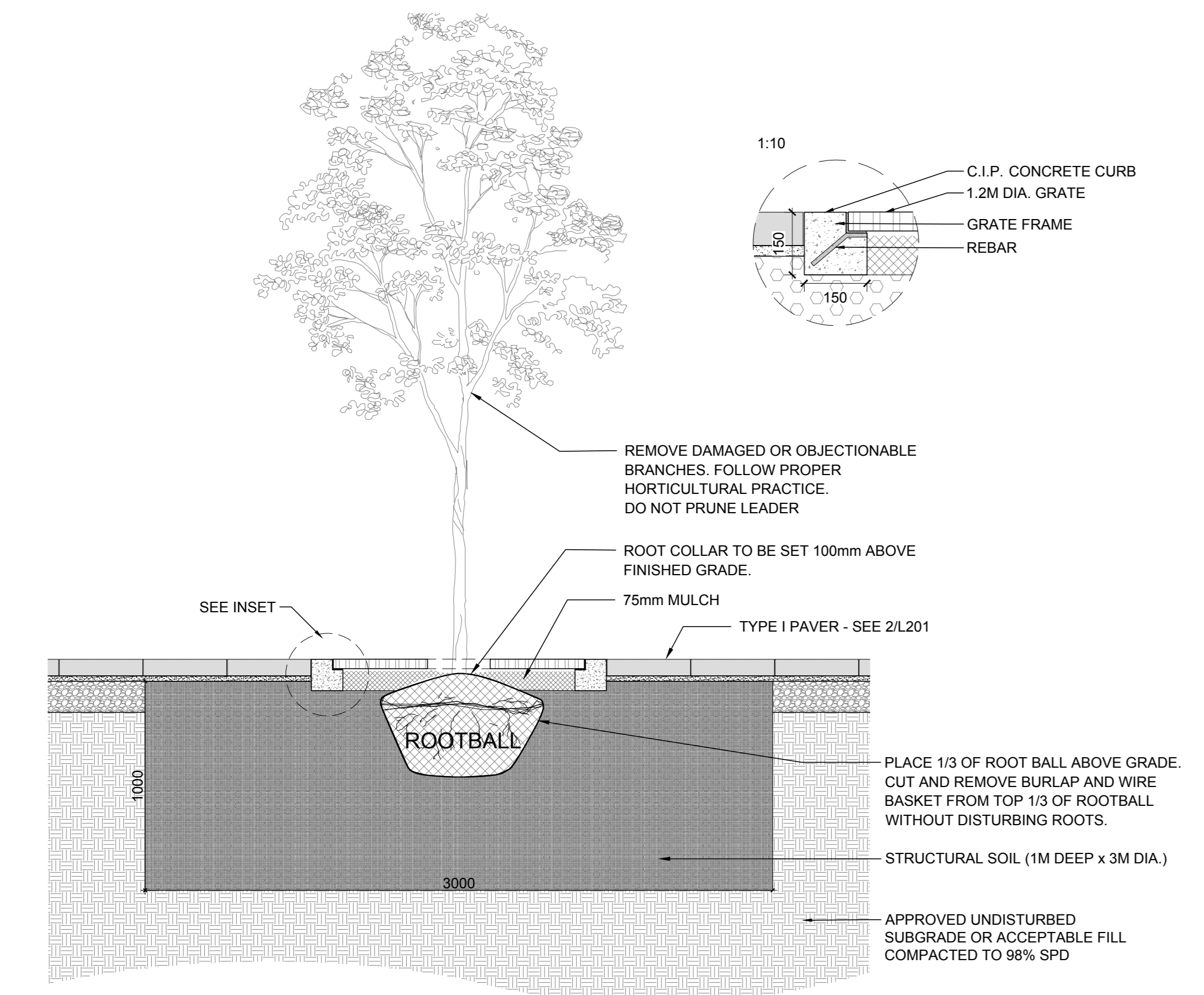
4
DECIDUOUS TREE PLANTING
SCALE NTS



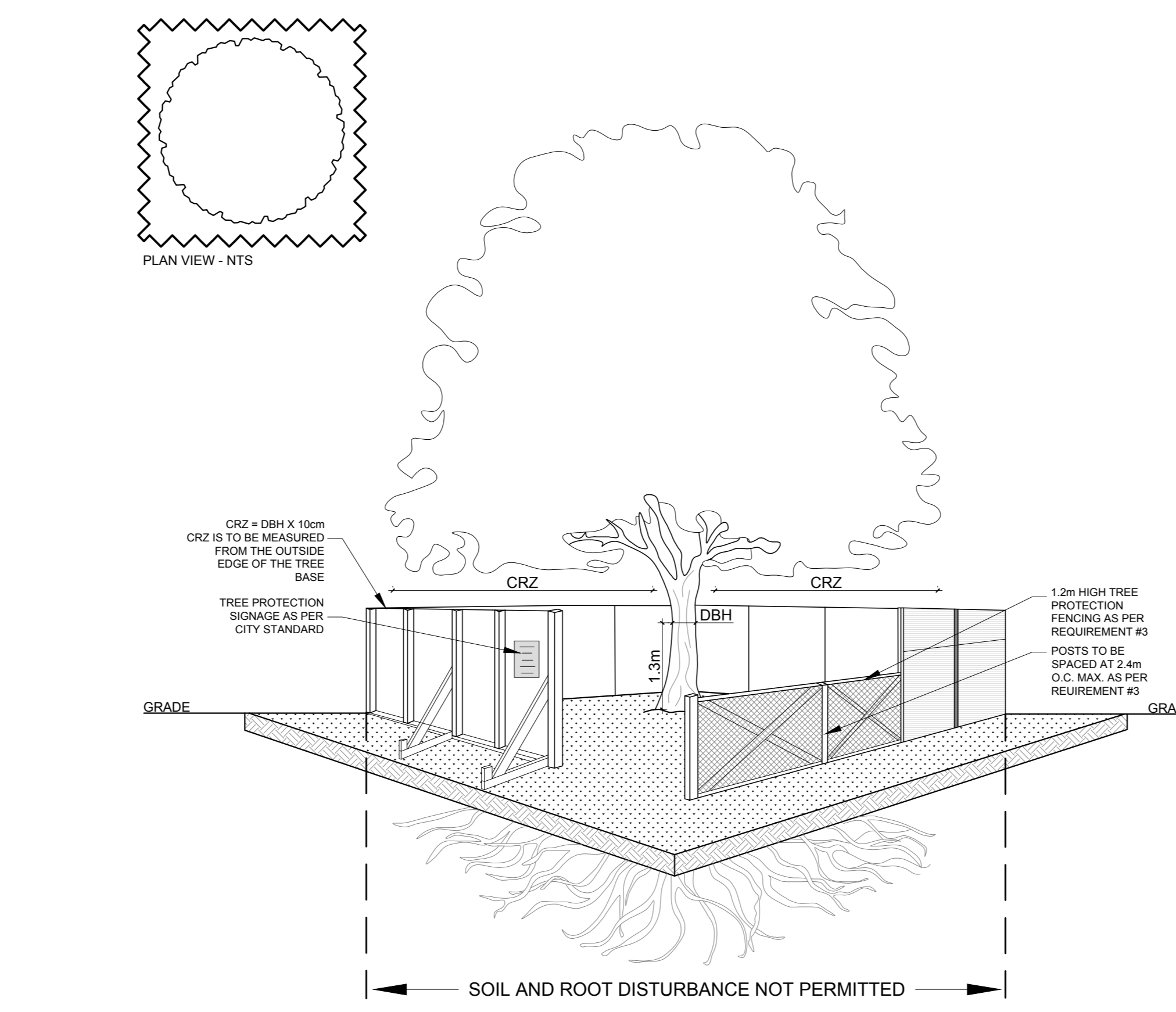
5
CONIFEROUS TREE PLANTING
SCALE NTS



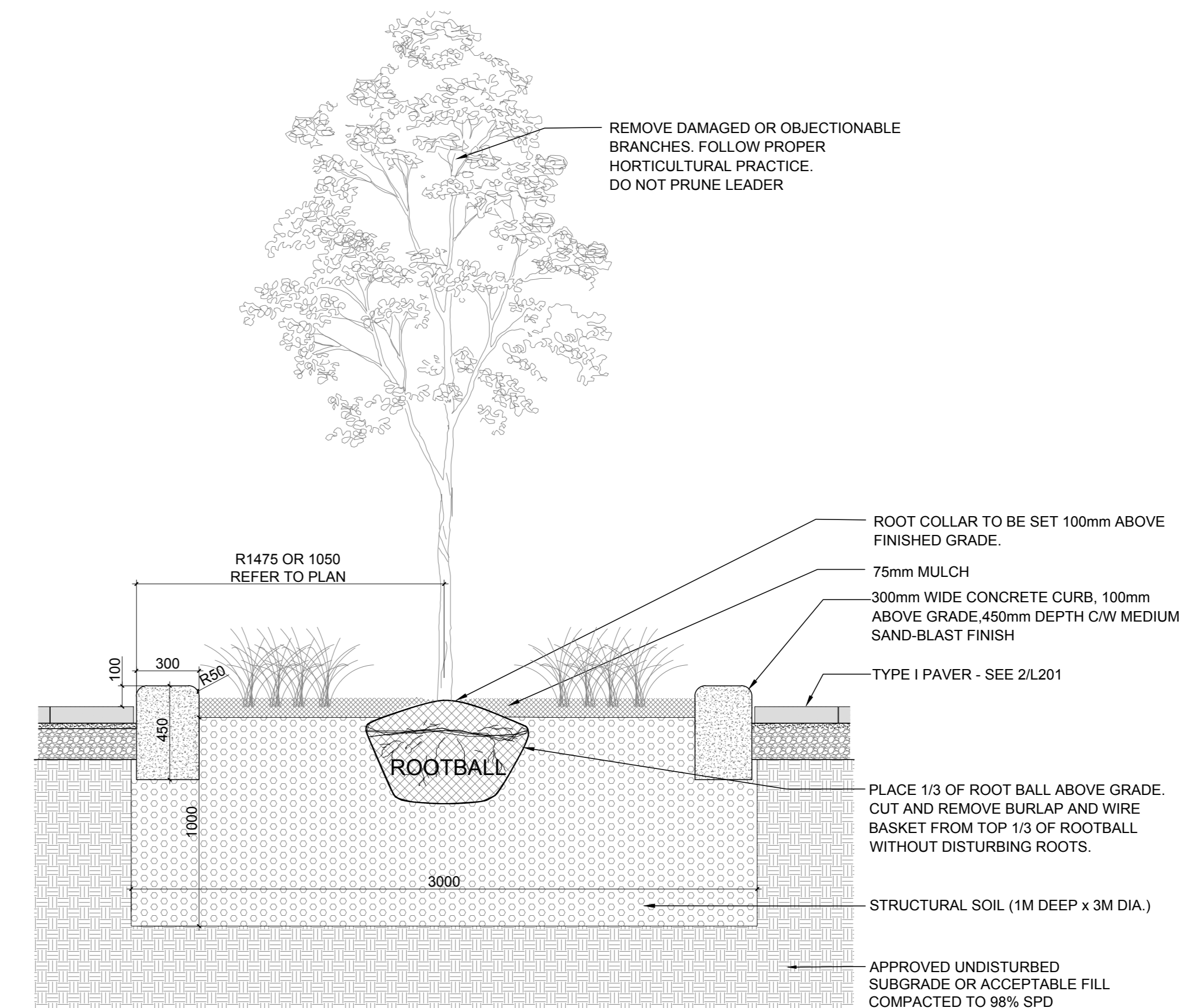
6
SHRUB/ PERENNIAL PLANTING
SCALE NTS



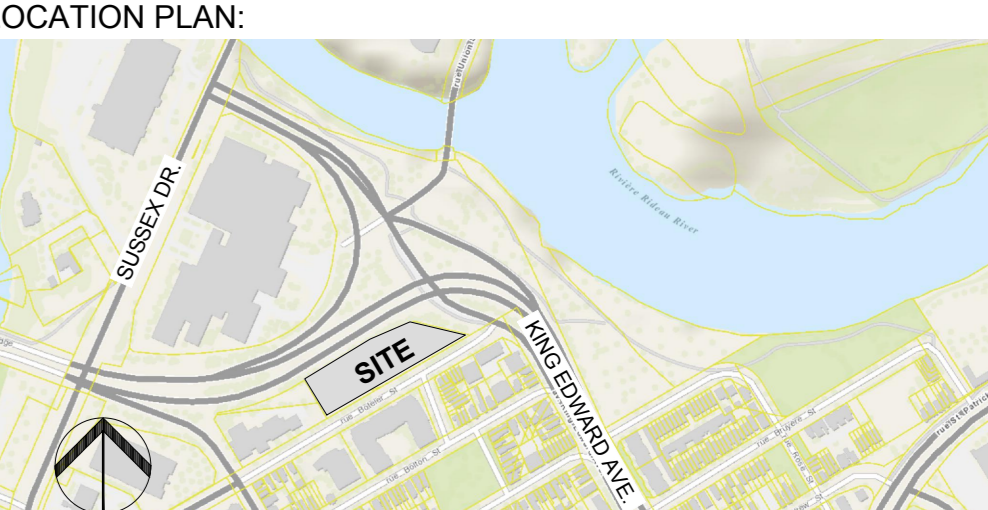
7
TREE PLANTING IN GRATE
SCALE 1:20



8
TREE PROTECTION FENCING
SCALE 1:20



9
TREE PLANTING IN CURB
SCALE 1:20



grc architects
47 Clarence Street, Suite 401
Ottawa, Ontario K1N 9K1
t: 613-241-8203 f: 613-241-4180
info@grcarchitects.com www.grcarchitects.com

APPROVED
By Andrew McCreight at 2:28 pm, Jul 30, 2024

- GENERAL NOTES**
- IT IS THE RESPONSIBILITY OF THE APPROPRIATE CONTRACTOR OR OFFICIAL TO REPORT ANY ERRORS, OMISSIONS OR DISCREPANCIES ON THIS PLAN WITH ACTUAL SITE CONDITIONS TO THE LANDSCAPE ARCHITECT BEFORE PROCEEDING WITH CONSTRUCTION.
 - THE CONTRACTOR IS TO NOTIFY ALL UTILITY COMPANIES AND AUTHORITIES PRIOR TO ANY EXCAVATION AND ASCERTAIN LOCATIONS OF UNDERGROUND SERVICES.
 - THE CONTRACTOR IS TO REINSTATE ALL AREAS AND ITEMS DAMAGED AS A RESULT OF CONSTRUCTION ACTIVITY.
 - THE CONTRACTOR IS TO COMPLY WITH ALL PERTINENT CODES AND BY-LAWS.
 - THE CONTRACTOR IS TO MAINTAIN A POSITIVE SURFACE RUN-OFF THROUGHOUT THE ENTIRE CONSTRUCTION PERIOD.
 - THE LANDSCAPE ARCHITECT IS NOT RESPONSIBLE FOR SUBSURFACE CONDITIONS.
 - THE CONTRACTOR IS TO IDENTIFY ALL EXISTING TREES TO REMAIN ON SITE WITH THE LANDSCAPE ARCHITECT PRIOR TO CONSTRUCTION.
 - THE CONTRACTOR IS TO STAKE THE PROPOSED LOCATION OF ALL PLANT MATERIAL IN CONJUNCTION WITH THE LANDSCAPE ARCHITECT PRIOR TO EXCAVATION.
 - MINIMUM DISTANCES FOR SELECTED DECIDUOUS TREES ARE AS FOLLOWS:
- BUILDING FOUNDATIONS 7.5M
- SIDEWALKS 1.5M
- PUBLIC STREETS 2.5M
- UNDERGROUND INFRASTRUCTURE 2.0M
 - ALL TREES WITHIN 1M OF UNDERGROUND UTILITY TRENCHES ARE TO BE EXCAVATED BY HAND.
 - REMOVE ALL PROTECTIVE WRAPPING FROM TREE TRUNKS AFTER INSTALLATION.
 - STAKING OF TREES SHALL ONLY BE PERFORMED IF NECESSARY.
 - ENSURE THAT MULCH IS PULLED BACK A MIN. DISTANCE OF 75MM FROM BASE OF TREE TRUNK.

6	REISSUED FOR SITE PLAN CONTROL APPLICATION	11/03/23	LC	JL
5	REISSUED FOR SITE PLAN CONTROL	08/08/23	SL	JL
4	REVISED AS PER CITY 2nd REVIEW COMMENTS	04/14/23	LC	JL
3	ISSUED FOR SITE PLAN CONTROL	08/26/22	SL	JL
2	ISSUED FOR BUILDING PERMIT	04/12/22	LC	JL
1	ISSUED FOR 99%	03/18/22	LC	JL
No.	Issue	Date	DR	CK

JAMES B. LENNOX & ASSOCIATES INC.
LANDSCAPE ARCHITECTS
3332 CARLING AVENUE OTTAWA, ONTARIO K3H 5A8
Tel. (613) 722-5168 Fax. (1-866) 343-3942

PROJECT
QATAR NEW EMBASSY & CONSULATE
BOTELER STREET
OTTAWA, ON

DRAWING
LANDSCAPE DETAILS

STAMP	SCALE
	SEE PLAN
	START DATE
	JUNE, 2019
	PROJECT NO.
	20-GRC-2018

PROJECT NORTH	DRAWING NO.
	L201
	PLANT SIZE A.0