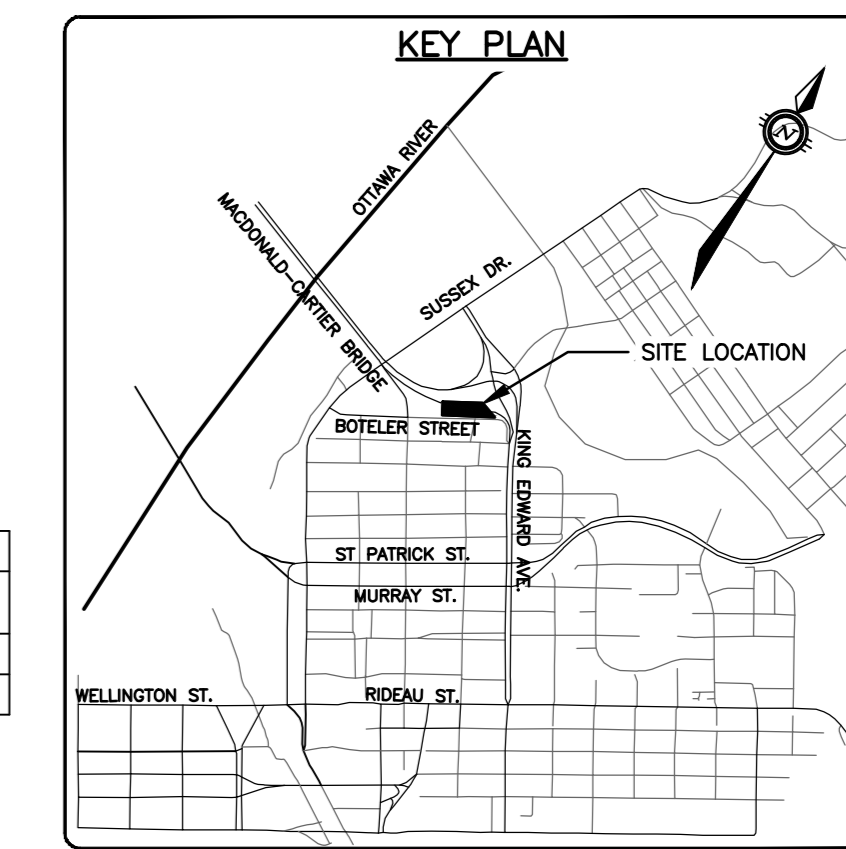


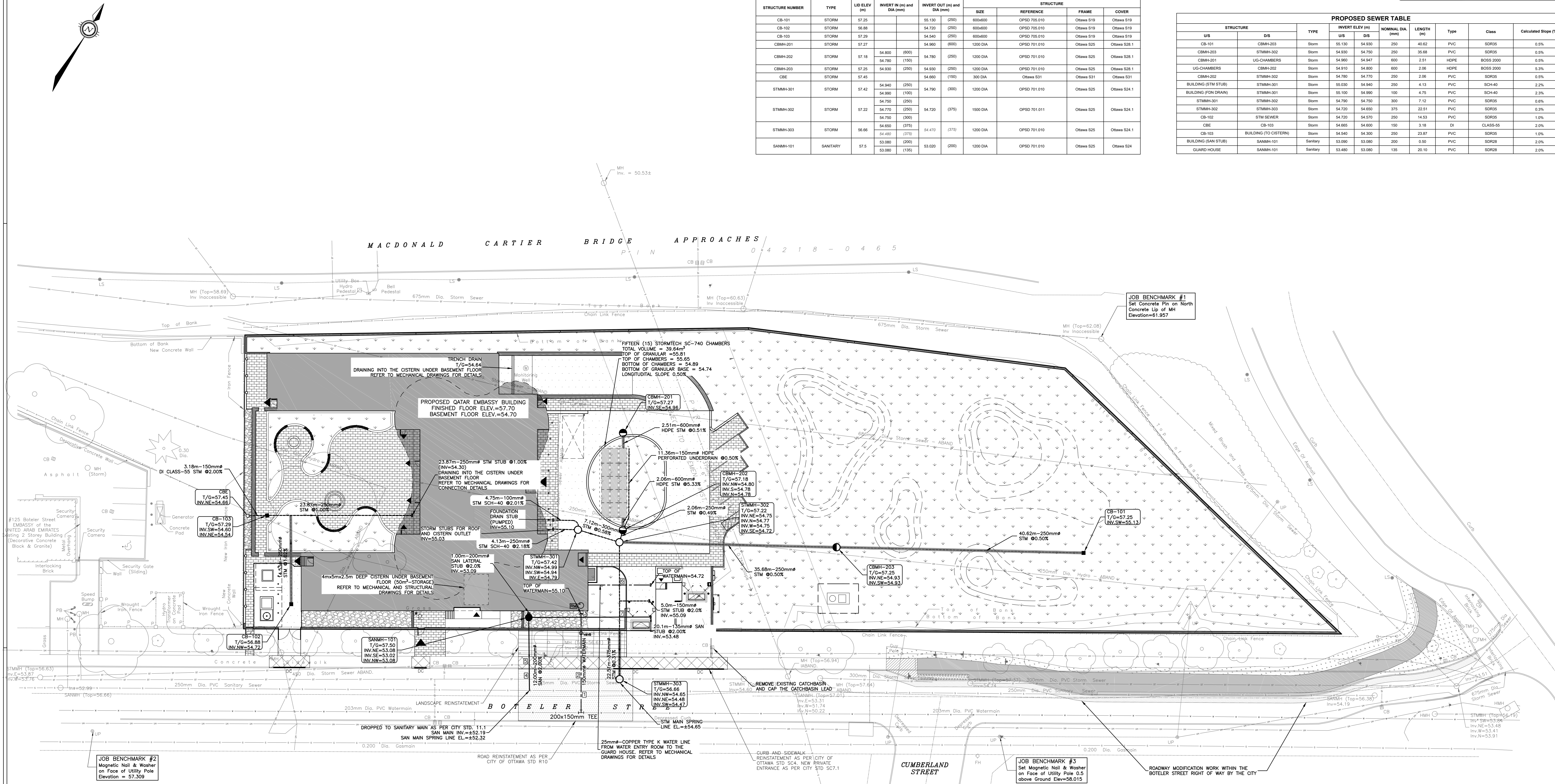
LOCATION	FINISHED GRADE (m)	SANITARY SEWER		STORM SEWER		WATERMAIN		CLEARANCES (mm)	COMMENTS			
		INV ELEV (m)	DIA (mm)	INV ELEV (m)	DIA (mm)	INV ELEV (m)	QRY ELEV (m)					
1	56.51	52.10	250	52.35	56.130	375	54.805	150	54.11	1610		
2	56.48	53.16	200	53.36	54.43	375	54.805	150	53.93	500	WATERMAIN BELOW SEWER AS PER CITY STD. W25	
3	57.50	52.82	200	53.02	54.38	375	54.755	150	55.10	1590		
4	56.47	52.65	200	52.85	54.19 (80% ¹)	450	54.64 (80% ¹)			1340		
5	57.36	52.65	200	52.85	54.65	375	55.025	54.325	25	54.35	300	WATER SERVICE BELOW SEWER AS PER CITY STD. W25
7	57.4	53.35	135	53.485	54.64	375	55.015			1155		



ICD SUMMARY TABLE				
Control Location	Prod. Dev. Area No.	Max Flow (L/sec)	Max Head (m)	Model
CBMH-203	A9, A10	6.00	2.6	Hydrotek 100-VHV-1
CBMH-202	A7	6.00	0.9	Hydrotek 75-VHV-1

STRUCTURE NUMBER	TYPE	LD ELEV (m)	INVERT IN (m) and DIA (mm)	INVERT OUT (m) and DIA (mm)	STRUCTURE			
					SIZE	REFERENCE	COVER	
CB-101	STORM	57.25		56.130 (250)	600x600	OPSD 705.010	Ottawa S19	Ottawa S19
CB-102	STORM	56.88		54.720 (250)	600x600	OPSD 705.010	Ottawa S19	Ottawa S19
CB-103	STORM	57.29		54.540 (250)	600x600	OPSD 705.010	Ottawa S19	Ottawa S19
CBMH-201	STORM	57.27		54.960 (800)	1200 DIA	OPSD 701.010	Ottawa S25	Ottawa S28.1
CBMH-202	STORM	57.18	54.800 (600)	54.780 (250)	1200 DIA	OPSD 701.010	Ottawa S25	Ottawa S28.1
CBMH-203	STORM	57.25	54.930 (250)	54.900 (250)	1200 DIA	OPSD 701.010	Ottawa S25	Ottawa S28.1
CBE	STORM	57.45		54.600 (150)	300 DIA	OTAWA S31	Ottawa S31	Ottawa S31
STMHM-301	STORM	57.42	54.940 (200)	54.790 (300)	1200 DIA	OPSD 701.010	Ottawa S25	Ottawa S24.1
STMHM-302	STORM	57.22	54.770 (200)	54.720 (375)	1500 DIA	OPSD 701.011	Ottawa S25	Ottawa S24.1
STMHM-303	STORM	56.66	54.650 (375)	54.470 (375)	1200 DIA	OPSD 701.010	Ottawa S25	Ottawa S24.1
SANMH-101	SANITARY	57.5	53.080 (135)	53.030 (200)	1200 DIA	OPSD 701.010	Ottawa S25	Ottawa S24

PROPOSED SEWER TABLE									
STRUCTURE	TYPE	INVERT ELEV (m)	NORMAL DIA (mm)	LENGTH (m)	Type	Class	Calculated Slope (%)		
US	US								
CB-101	CBMH-203	Storm	56.130	56.920	250	46.62	PVC	SDR35	0.5%
CBMH-201	STMHM-302	Storm	54.930	54.750	250	35.68	PVC	SDR35	0.5%
CBMH-203	UG-CHAMBERS	Storm	54.900	54.947	600	2.51	HDPE	BOSS 2000	0.0%
UG-CHAMBERS	CBMH-202	Storm	54.910	54.800	600	2.06	HDPE	BOSS 2000	5.3%
CBMH-202	STMHM-302	Storm	54.790	54.770	250	2.06	PVC	SDR35	0.5%
BUILDING (STM STUB)	STMHM-301	Storm	55.030	54.960	200	4.33	PVC	SDR40	2.2%
BUILDING (STN CHAMBER)	STMHM-301	Storm	55.150	54.960	100	4.75	PVC	SDR40	2.2%
STMHM-301	STMHM-302	Storm	54.790	54.790	300	7.12	PVC	SDR35	0.6%
STMHM-302	STMHM-303	Storm	54.720	54.600	375	22.51	PVC	SDR35	0.3%
CB-102	STM SEWER	Storm	54.720	54.570	250	14.53	PVC	SDR35	1.0%
CBE	CB-103	Storm	54.655	54.600	150	3.16	DI	CLASS-50	2.0%
CB-103	BUILDING TO CISTERN	Storm	54.450	54.300	250	23.87	PVC	SDR35	1.0%
BUILDING (SAN STUB)	SANMH-101	Sanitary	53.080	53.080	200	0.00	PVC	SDR35	2.0%
GUARD HOUSE	SANMH-101	Sanitary	53.080	53.080	135	20.10	PVC	SDR28	2.0%



CAUTION
THE POSITION OF ALL POLE LINES, CONDUITS, WATERMANS, SEWERS AND OTHER UNDERGROUND AND OVERGROUND UTILITIES AND STRUCTURES IS NOT NECESSARILY SHOWN ON THE CONTRACT DRAWINGS, AND WHERE SHOWN, THE ACCURACY OF THE POSITION OF SUCH UTILITIES AND STRUCTURES IS NOT GUARANTEED. BEFORE STARTING WORK, DETERMINE THE EXACT LOCATION OF ALL SUCH UTILITIES AND STRUCTURES AND ASSUME ALL LIABILITY FOR DAMAGE TO THEM.

no.	date	revision / issue	by
4	08/08/2023	RE-ISSUED FOR SITE PLAN CONTROL APPLICATION	AJ
3	26/08/2022	RE-ISSUED FOR SITE PLAN CONTROL APPLICATION	AJ
2	12/04/2022	ISSUED FOR BUILDING PERMIT	AJ
1	01/03/2022	ISSUED FOR SITE PLAN CONTROL APPLICATION	AJ

grc architects
47 Clarence Street, Suite 401
Ottawa, Ontario K1N 6K6
t: 613-241-8203 f: 613-241-4180
info@grcarchitects.com www.grcarchitects.com

exp. Services Inc.
Professional Engineer
Civil
• BUILDING • EARTH & ENVIRONMENT • ENERGY •
• INDUSTRIAL • INFRASTRUCTURE • SUSTAINABILITY •

Professional Stamp
Professional Engineer
M.A. ANSARI
2238810
Province of Ontario

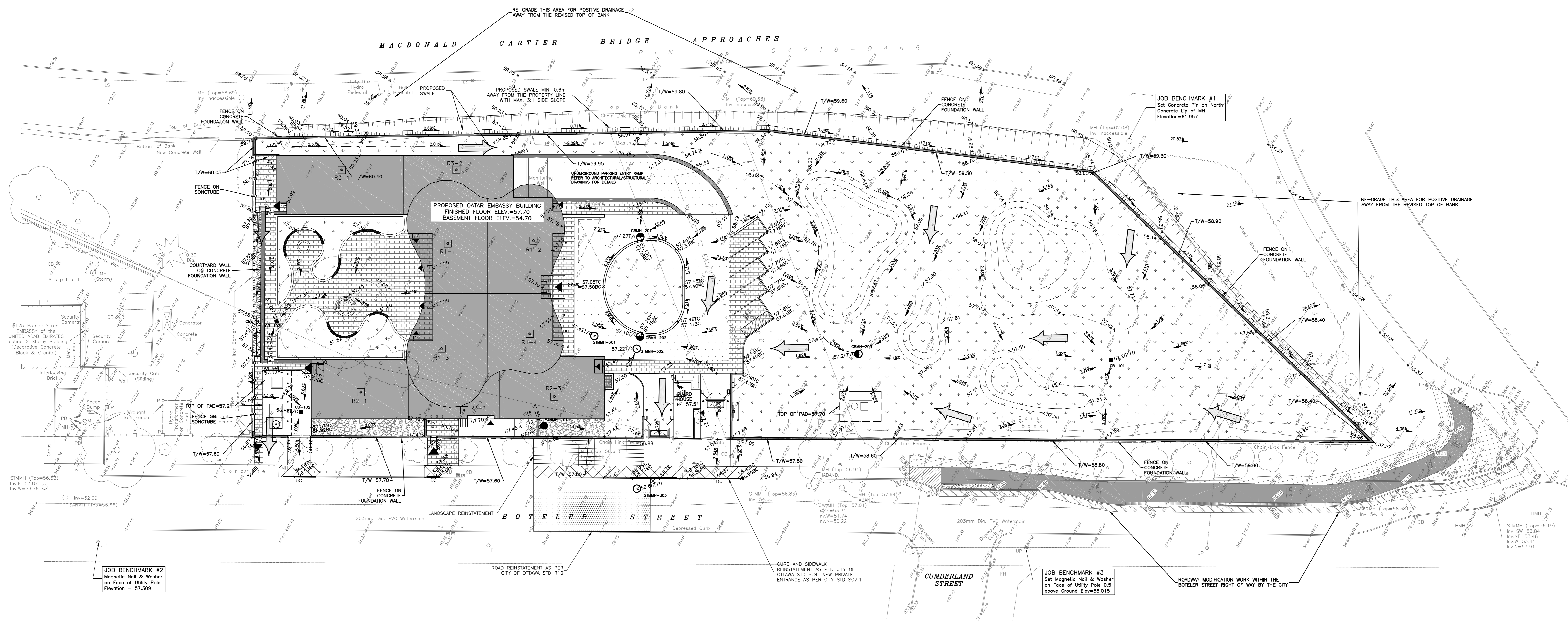
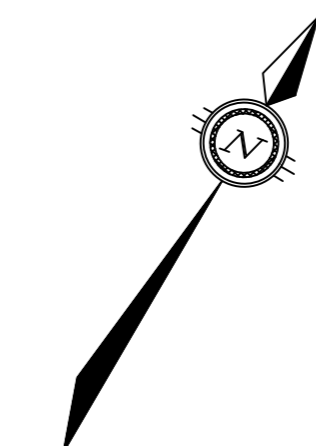
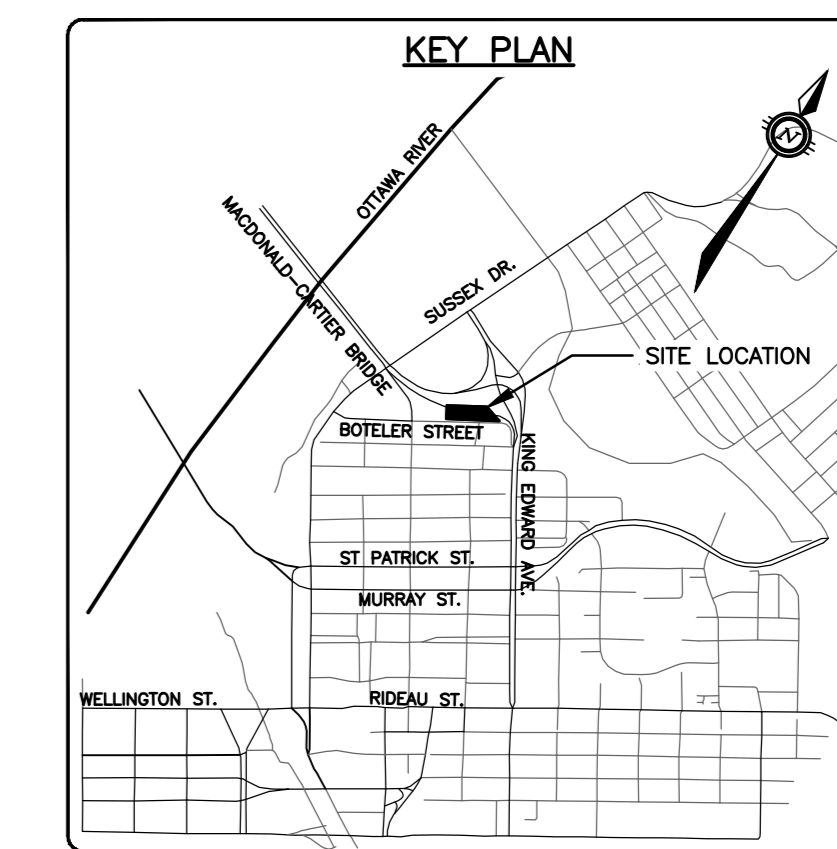
PROJECT TITLE
NEW QATAR EMBASSY AND CONSULATE
Ottawa Ontario

DRAWING TITLE
SITE SERVICING PLAN

DATE	JOB NO.
05/10/2021	OTT-00261664-AD
SCALE	DRAWING NO.
1:250	C-100
DESIGNER	APPROVED
A.Jarwal	A.Ansari

1. DO NOT SCALE THIS DRAWING.
2. CONTRACTOR TO VERIFY ALL DIMENSIONS AND NOTIFY THE ARCHITECT OF ANY DISCREPANCIES BEFORE WORK COMMENCES.
3. THIS DRAWING TO BE READ IN CONJUNCTION WITH THE FOLLOWING DRAWINGS: STRUCTURAL, MECHANICAL, ELECTRICAL.

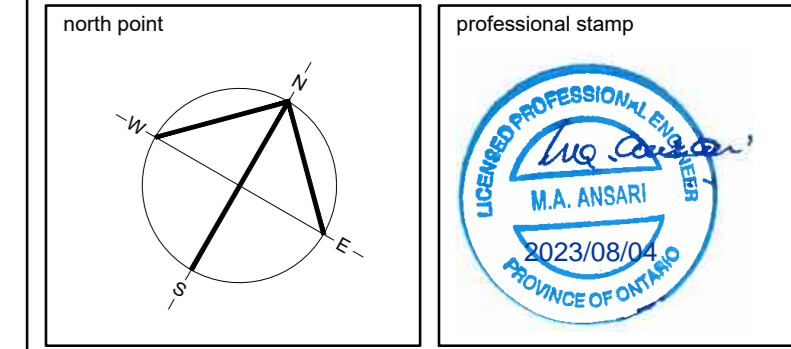
CAUTION
THE POSITION OF ALL POLE LINES, CONDUITS, WATERMANS, SERVICES AND OTHER UNDERGROUND AND OVERGROUND UTILITIES AND STRUCTURES IS NOT NECESSARILY SHOWN ON THE CONTRACT DRAWINGS, AND WHERE SHOWN, THE ACCURACY OF THE POSITION OF SUCH UTILITIES AND STRUCTURES IS NOT GUARANTEED. BEFORE STARTING WORK, DETERMINE THE EXACT LOCATION OF ALL SUCH UTILITIES AND STRUCTURES AND ASSUME ALL LIABILITY FOR DAMAGE TO THEM.



4	08/08/2023	RE-ISSUED FOR SITE PLAN CONTROL APPLICATION	AJ
3	26/08/2022	RE-ISSUED FOR SITE PLAN CONTROL APPLICATION	AJ
2	12/04/2022	ISSUED FOR BUILDING PERMIT	AJ
1	01/03/2022	ISSUED FOR SITE PLAN CONTROL APPLICATION	AJ
no.	date	revision / issue	by

grc architects
47 Clarence Street, Suite 401
Ottawa, Ontario K1N 1N6
t: 613-241-8203 f: 613-241-4180
info@grcarchitects.com www.grcarchitects.com

consultant
exp.
exp Services Inc.
1111 11th Street, Suite 100
Ottawa, Ontario K1N 1N6
Canada
• BUILDING • EARTH & ENVIRONMENT • ENERGY •
• INDUSTRIAL • INFRASTRUCTURE • SUSTAINABILITY •



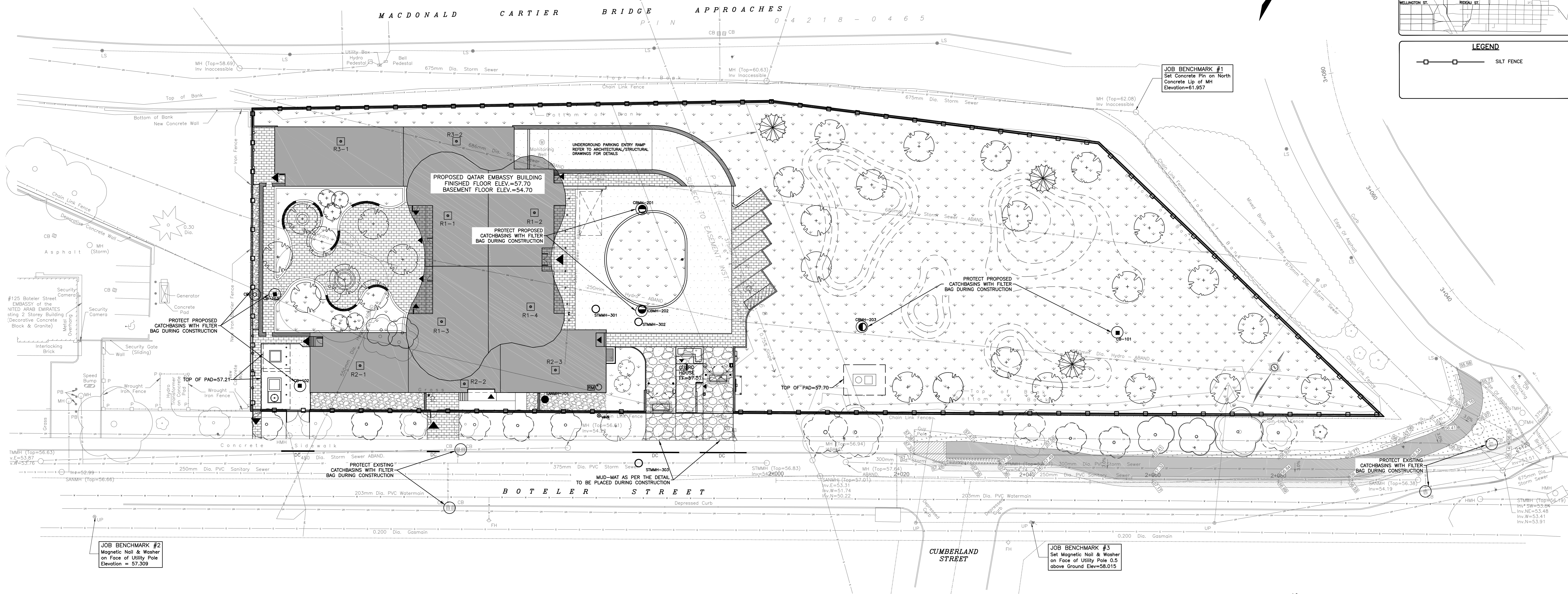
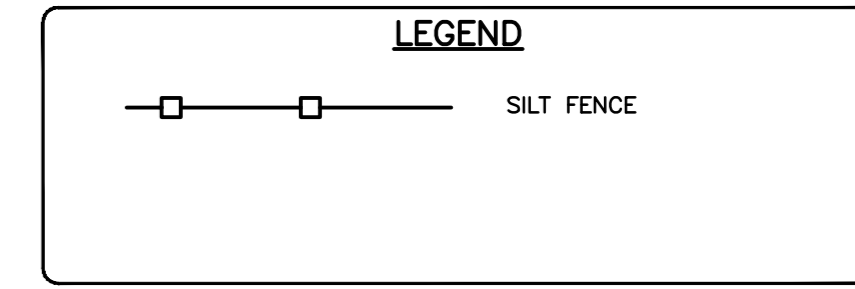
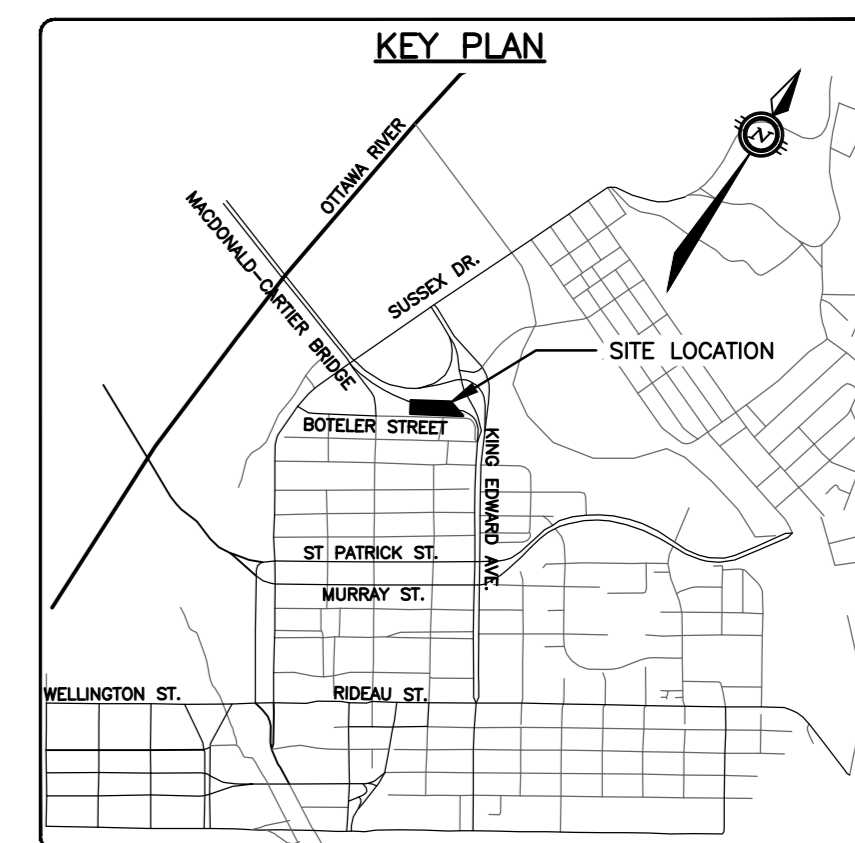
PROJECT TITLE
NEW QATAR EMBASSY AND CONSULATE
Ottawa, Ontario

DRAWING TITLE
SITE GRADING PLAN

date	job no.
scales	OTT-00261664-AD
drawn	drawing no.
approved	C-200
plot date	05/10/2021

1. DO NOT SCALE THIS DRAWING.
2. CONTRACTOR TO VERIFY ALL DIMENSIONS AND NOTIFY THE ARCHITECT OF ANY DISCREPANCIES BEFORE WORK COMMENCES.
3. THIS DRAWING TO BE READ IN CONJUNCTION WITH THE FOLLOWING DRAWINGS: STRUCTURAL, MECHANICAL, ELECTRICAL.

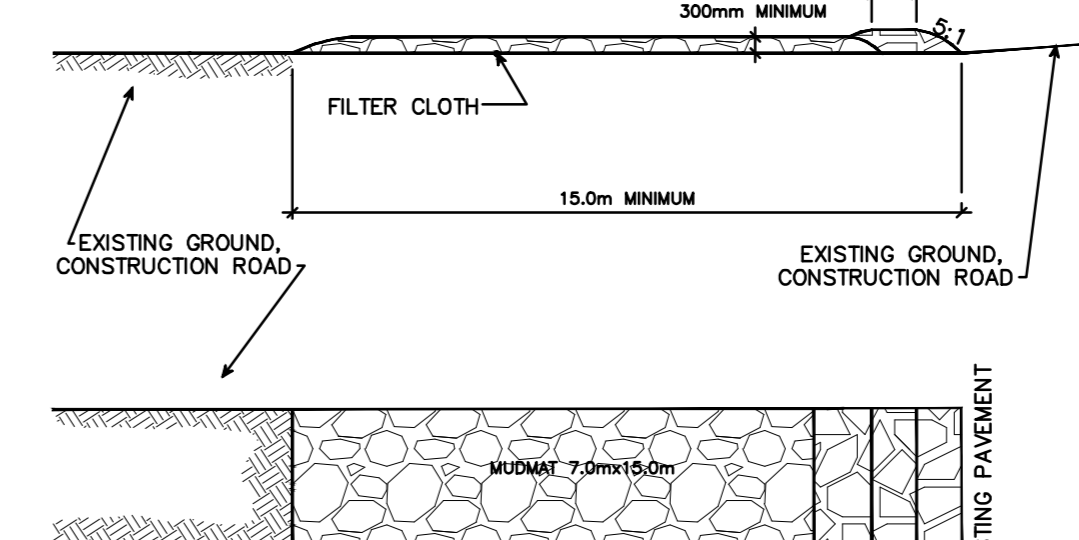
CAUTION
THE POSITION OF ALL POLE LINES, CONDUITS, WATERMANS, SEWERS AND OTHER UNDERGROUND AND OVERGROUND UTILITIES AND STRUCTURES IS NOT NECESSARILY SHOWN ON THE CONTRACT DRAWINGS, AND WHERE SHOWN, THE ACCURACY OF THE POSITION OF SUCH UTILITIES AND STRUCTURES IS NOT GUARANTEED. BEFORE STARTING WORK, DETERMINE THE EXACT LOCATION OF ALL SUCH UTILITIES AND STRUCTURES AND ASSUME ALL LIABILITY FOR DAMAGE TO THEM.



EROSION AND SEDIMENT CONTROLS DURING CONSTRUCTION

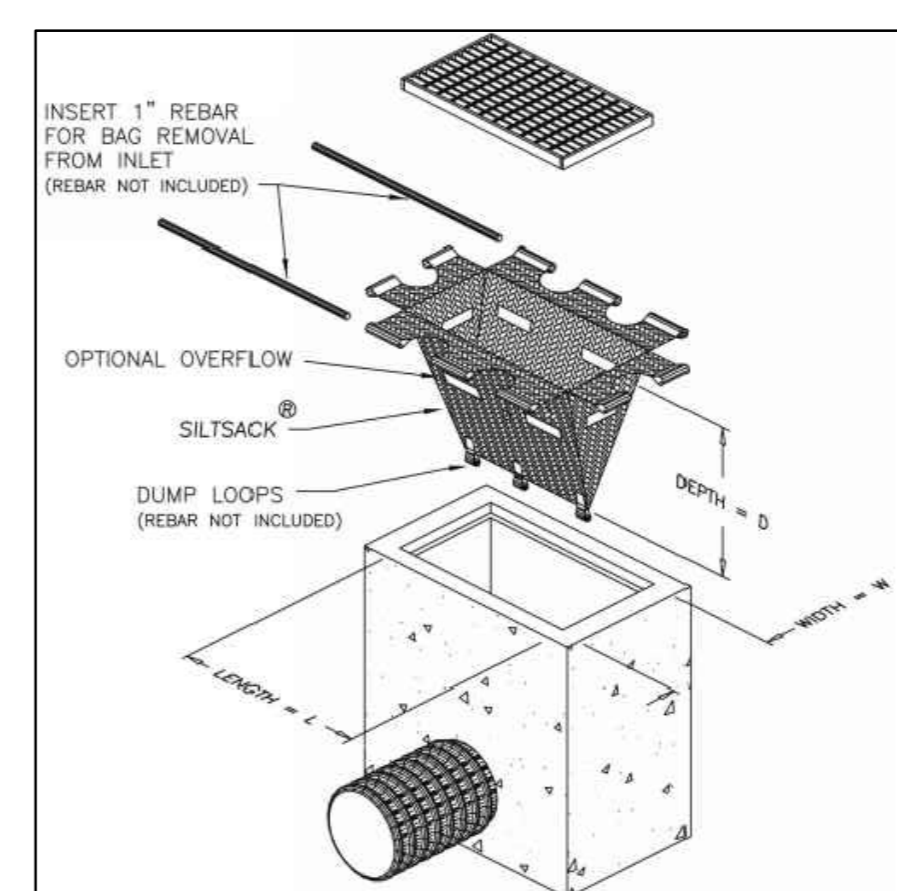
DURING ALL CONSTRUCTION ACTIVITIES, EROSION AND SEDIMENTATION SHALL BE CONTROLLED BY THE FOLLOWING TECHNIQUES:

1. A SILT FENCE TO BE INSTALLED 0.3m INSIDE THE SITE PROPERTY LINE TO LOCATIONS SHOWN ON THIS DRAWING BEFORE ANY TYPE OF EARTH DISTURBANCE BEGINS.
2. MUD MAT TO BE PROVIDED AT THE INGRESS-EGRESS LOCATION AS DETAILED ON THIS DRAWING TO MINIMIZE VEHICLE TRACK-OUT DURING ALL CONSTRUCTION ACTIVITIES.
3. SILT FENCE SHALL BE PROVIDED AROUND STOCKPILED SOIL/SEDIMENT.
4. WATERING AND/OR CALCIUM CHLORIDE SHALL BE USED TO PREVENT BLOWING DUST DURING CONSTRUCTION.
5. ALL EXCAVATED SLOPES SHALL BE COVERED WITH FILTER CLOTH, WHERE PRACTICALLY POSSIBLE. THE SIDE SLOPE OF EXCAVATION SHALL BE KEPT AT MAX. 3:1 TO KEEP THE SLOPE STABLE AND REDUCE SOIL EROSION. SILT FENCE SHALL BE PROVIDED TO TRAP THE SEDIMENTS WHERE PRACTICALLY POSSIBLE.
6. VEHICULAR TRAFFIC SHALL BE AVOIDED IN AREAS WHERE TOPSOIL IS USED. SEEDING SHALL BE DONE AS SOON AS POSSIBLE AFTER LAYING DOWN TOPSOIL IN THE LANDSCAPED AREAS. EXISTING VEGETATION SHALL BE PRESERVED WHERE PRACTICALLY POSSIBLE.
7. VEHICULAR TRAFFIC SHALL BE MINIMIZED WITHIN CONSTRUCTION SITE TO MINIMIZE SOIL COMPACTION WHERE POSSIBLE.
8. LIMIT THE EXTENT OF EXPOSED SOILS AT ANY GIVEN TIME.
9. MINIMIZE THE AREA TO BE CLEARED AND DISRUPTION TO ADJACENT AREAS.
10. INSTALL FILTER CLOTH BETWEEN FRAME AND COVER ON ALL PROPOSED STRUCTURES ON-SITE AND EXISTING STRUCTURES OFF-SITE ALONG THE FLOW ROUTE AS SHOWN ON THIS DRAWING. IN ANY CASE, DIRECT ENTRY OF SEDIMENTS IN TO THE CITY SEWERS SHALL BE AVOIDED.
11. GROUNDWATER SHALL BE TREATED ON-SITE TO MEET THE CITY OF OTTAWA DISCHARGE REQUIREMENTS BEFORE DISCHARGING IT INTO THE CITY SEWER.
12. WASTEWATER FROM CONCRETE WASHOUT, STUCCO, PAINT, OILS, CURING COMPOUNDS AND ANY OTHER CONSTRUCTION MATERIALS WASHOUT, FUELS, OILS OR OTHER POLLUTANTS USED IN VEHICLES AND EQUIPMENT, SOAP, SOLVENTS, DETERGENTS, TOXIC OR HAZARDOUS SUBSTANCES SHALL BE PROHIBITED FROM DISCHARGING INTO THE OPEN ENVIRONMENT OR SEWERS. NO FUELING, MAINTENANCE OR WASHING OF EQUIPMENT SHALL BE CARRIED ON SITE. FOR STORAGE, HANDLING OF CONSTRUCTION MATERIAL AND WASTE, PLASTIC COVERING SHALL BE PROVIDED AND MAINTAINED TO PREVENT STORMWATER CONTACT. FOR WASTE DISPOSAL, REGULAR SITE CLEANING AND COLLECTION OF WASTE IN DESIGNATED WASTE CONTAINERS SHALL BE FOLLOWED. IN NO CASE, CONTAMINATED WATER SHALL BE RELEASED IN STORMWATER SYSTEM.
13. A VISUAL INSPECTION SHALL BE COMPLETED DAILY ON SEDIMENT CONTROL BARRIERS BY THE GENERAL CONTRACTOR AND ANY DAMAGE REPAIRED IMMEDIATELY. CARE SHALL BE TAKEN TO PREVENT DAMAGE DURING CONSTRUCTION OPERATIONS.
14. IN SOME CASES SOME BARRIERS MAY BE REMOVED TEMPORARILY TO ACCOMMODATE THE CONSTRUCTION OPERATIONS. THE AFFECTED BARRIERS WILL BE REINSTATED AT NIGHT WHEN CONSTRUCTION IS COMPLETED.
15. THE SEDIMENT CONTROL DEVICES WILL BE CLEANED OF ACCUMULATED SILT AS REQUIRED. THE DEPOSITS WILL BE DISPOSED OF AS PER THE REQUIREMENTS OF THE CONTRACT, REQUIREMENTS OF THE LOCAL MUNICIPALITY OR THE MINISTRY OF ENVIRONMENT, CONSERVATION AND PARKS (MECP), WHICHEVER IS MORE STRINGENT.
16. IN THE CASE OF EMERGENCY SPILL OF CONTAMINATED OR HAZARDOUS MATERIALS, MINISTRY OF ENVIRONMENT, CONSERVATION AND PARKS (MECP), CITY OF OTTAWA AND THE OWNER SHALL BE NOTIFIED AS SOON AS POSSIBLE. ALL POSSIBLE ACTIONS SHALL BE TAKEN TO PREVENT THE FURTHER SPREAD OF CONTAMINANT INTO THE ENVIRONMENT.
17. DURING THE COURSE OF CONSTRUCTION IF THE ENGINEER BELIEVES THAT ADDITIONAL PREVENTION METHODS ARE REQUIRED TO CONTROL EROSION AND SEDIMENTATION, THE CONTRACTOR WILL INSTALL ADDITIONAL SILT FENCES OR OTHER METHODS AS REQUIRED TO THE SATISFACTION OF THE ENGINEER.
18. CONSTRUCTION AND MAINTENANCE REQUIREMENTS FOR EROSION AND SEDIMENT CONTROLS TO COMPLY WITH ONTARIO PROVINCIAL STANDARD SPECIFICATION (OPSS) 805, AND CITY OF OTTAWA SPECIFICATIONS.
19. SEDIMENT AND EROSION CONTROL MEASURES MAY BE MODIFIED IN THE FIELD AT THE DISCRETION OF THE CITY OF OTTAWA SITE INSPECTOR OR CONSERVATION AUTHORITY.
20. ALL POLLUTION PREVENTION MEASURES SHALL BE INSPECTED ONCE EVERY 7-CALENDAR DAY OR AS REQUIRED BY THE GENERAL CONTRACTOR. DAMAGED MEASURES SHALL BE REPAIRED OR REPLACED BEFORE COMMENCING THE WORK OR EARLIEST POSSIBLE.
21. AREAS WITH GROUND DISTURBANCE, EROSION, AND SEDIMENT CONTROL METHODS, ON-SITE OVERLAND FLOW AREAS, DISCHARGE POINTS, STABILIZED AREAS SHALL BE INSPECTED BY THE GENERAL CONTRACTOR. INSPECTION REPORT SHALL BE PREPARED WITHIN 24 HOURS OF INSPECTION BY THE GENERAL CONTRACTOR. DATE STAMPED PHOTOGRAPHS ARE TO BE INCLUDED IN THE REPORT.

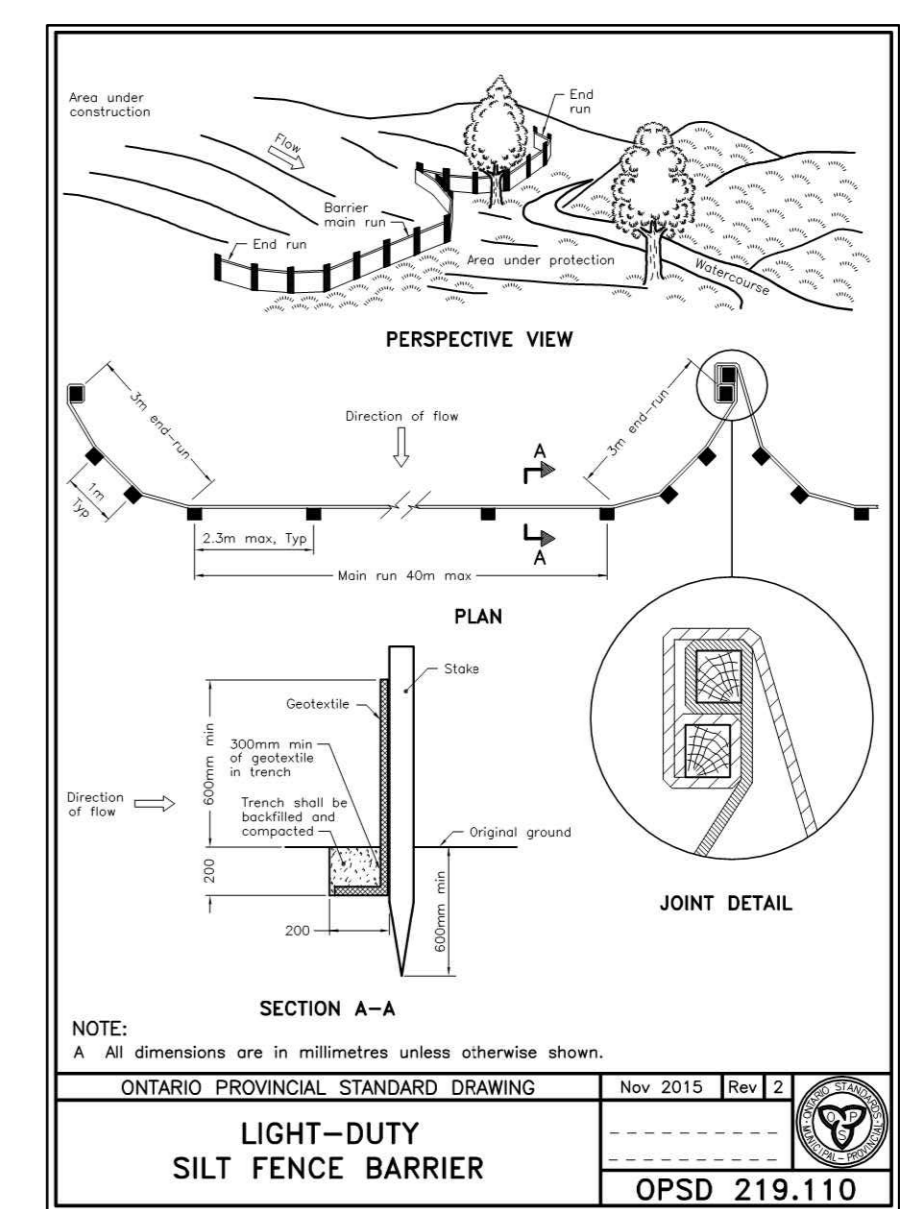


- NOTES:**
1. STONE - USE CLEAR CRUSHED 100mm STONE.
 2. LENGTH - AS REQUIRED BUT NOT LESS THAN 15.0m.
 3. THICKNESS - NOT LESS THAN 300mm.
 4. WIDTH - 7.0m MINIMUM, NOT LESS THAN THE WIDTH AT POINTS WHERE INGRESS OR EGRESS OCCURS.
 5. FILTER CLOTH - WILL BE PLACED OVER THE ENTIRE AREA PRIOR TO PLACING STONE.
 6. MAINTENANCE - THE ENTRANCE SHALL BE MAINTAINED IN A CONDITION WHICH WILL PREVENT TRACKING OR FLOWING OF SEDIMENT ONTO PUBLIC RIGHT-OF-WAY. THIS MAY REQUIRE PERIODIC TOP DRESSING WITH ADDITIONAL STONE AS CONDITIONS DEMAND AND REPAIR AND/OR CLEAN OUT OF ANY MEASURES USED TO TRAP SEDIMENT. ALL SEDIMENT SPILLED, DROPPED OR TRACKED ONTO THE PUBLIC RIGHT-OF-WAY MUST BE REMOVED IMMEDIATELY.
 7. PERIODIC INSPECTION AND NEEDED MAINTENANCE SHALL BE PROVIDED AFTER EACH RAIN.

MUD MAT DETAIL
N.T.S.



FILTER BAG DETAIL
N.T.S.

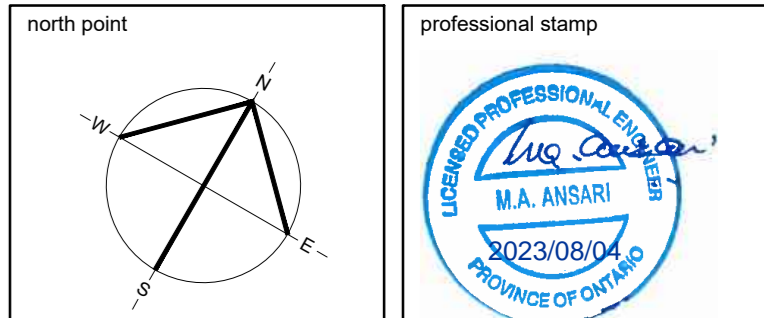


LIGHT-DUTY SILT FENCE BARRIER
OPSD 219.110

- NOTES:**
1. WOVEN WIRE FENCE TO BE FASTENED SECURELY TO WOOD POSTS WITH WIRE TIES OR STAPLES.
 2. POSTS TO BE SPACED AT 2.3 METRES CENTRE TO CENTRE.
 3. WHEN TWO SECTIONS OF FILTER CLOTH ADJOIN EACH OTHER THEY SHALL BE OVERLAPPED BY A MINIMUM OF 500mm.
 4. MAINTENANCE SHALL BE PERFORMED AS NEEDED AND MATERIAL REMOVED WHEN "BULGES" DEVELOP IN THE SILT FENCE.
 5. WOOD POSTS TO BE HARDWOOD TYPE (50mm x 50mm).
 6. GEOTEXTILE TO BE EMBEDDED 200mm INTO GROUND.
 7. GEOTEXTILE TO CONFORM TO OPSS 805 STANDARDS.
 8. SILT FENCE MUST BE INSTALLED BEFORE COMMENCEMENT OF CONSTRUCTION AND IN ACCORDANCE WITH DETAIL. SILT FENCE CAN BE REMOVED AFTER LANDSCAPING IS COMPLETE.
 9. SEDIMENTS MUST BE CLEARED AWAY WHEN THEY REACH HALF THE HEIGHT OF THE FENCE.



47 Clarence Street, Suite 401
Ottawa, Ontario K1N 6K6
T: 613-241-8203 F: 613-241-4180
info@grcarchitects.com www.grcarchitects.com



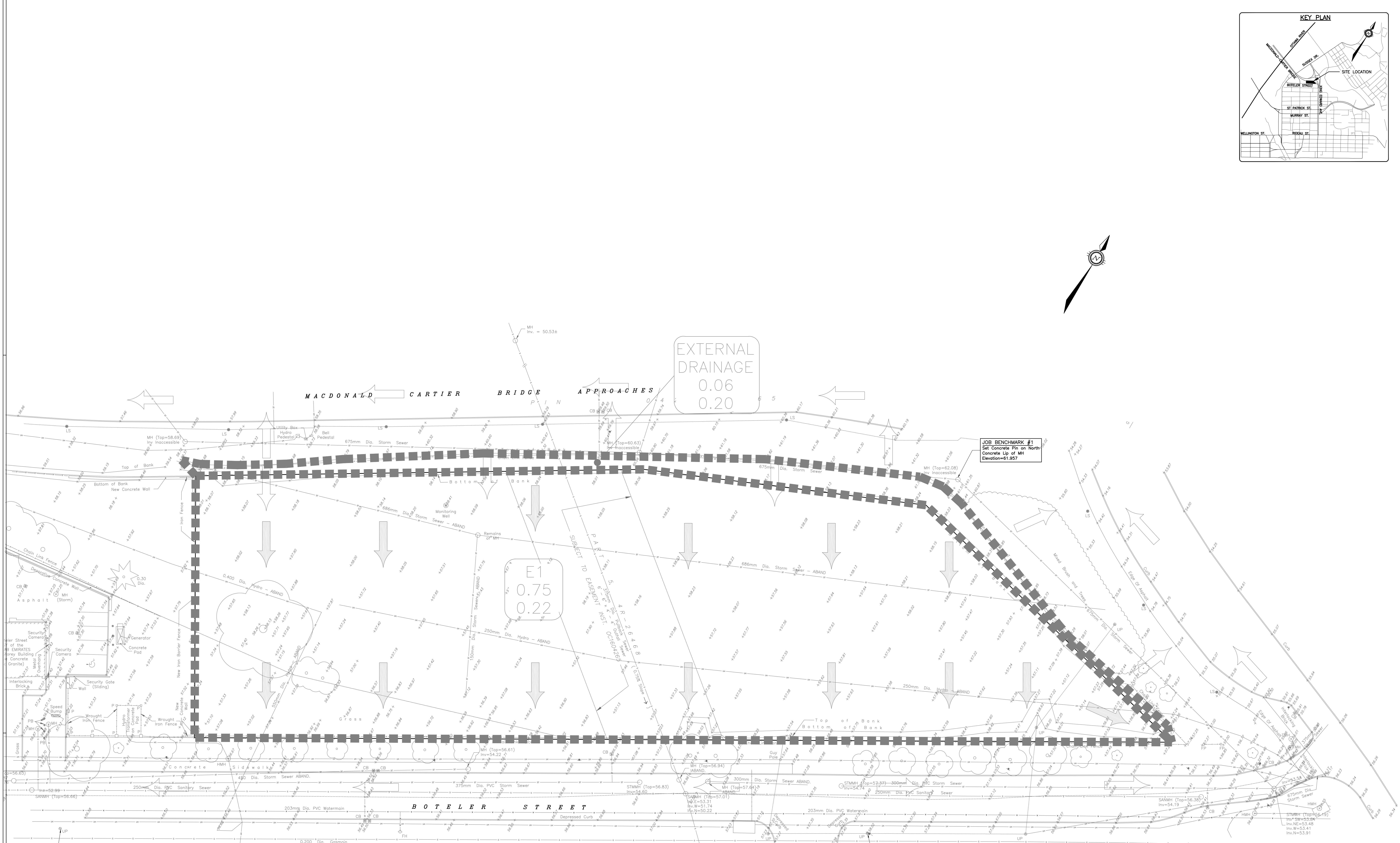
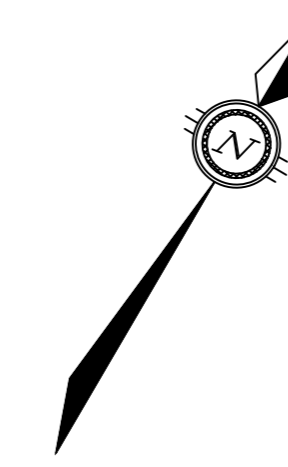
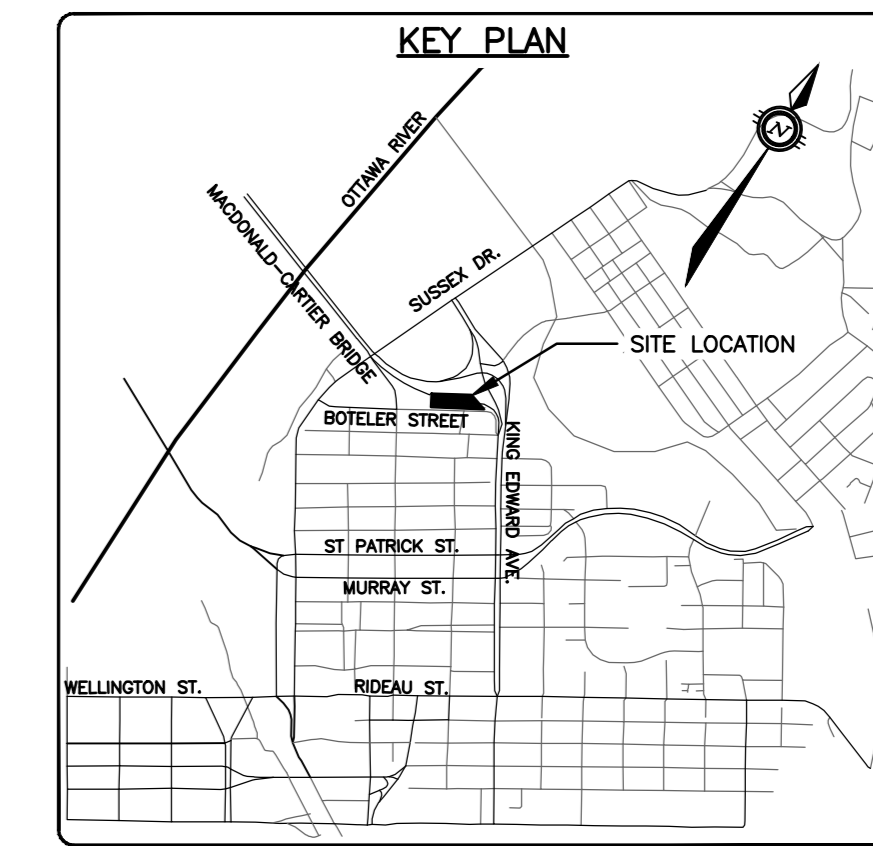
NEW QATAR EMBASSY AND CONSULATE

EROSION AND SEDIMENT CONTROL PLAN

date	job no.
scales 1:250	OTT-00261664-AD
drawn A.Jarwal	drawing no.
approved A.Ansari	C-300
plot date 05/10/2021	

1. DO NOT SCALE THIS DRAWING.
2. CONTRACTOR TO VERIFY ALL DIMENSIONS AND NOTIFY THE ARCHITECT OF ANY DISCREPANCIES BEFORE WORK COMMENCES.
3. THIS DRAWING TO BE READ IN CONJUNCTION WITH THE FOLLOWING DRAWINGS: STRUCTURAL, MECHANICAL, ELECTRICAL.

CAUTION
THE POSITION OF ALL POLE LINES, CONDUITS, WATERMANS, SEWERS AND OTHER UNDERGROUND AND OVERGROUND UTILITIES AND STRUCTURES IS NOT NECESSARILY SHOWN ON THE CONTRACT DRAWINGS. AND WHERE SHOWN, THE ACCURACY OF THE POSITION OF SUCH UTILITIES AND STRUCTURES IS NOT GUARANTEED. BEFORE STARTING WORK, DETERMINE THE EXACT LOCATION OF ALL SUCH UTILITIES AND STRUCTURES AND ASSUME ALL LIABILITY FOR DAMAGE TO THEM.



JOB BENCHMARK #2
Magnetic Nail & Washer
on Face of Utility Pole
Elevation = 57.309

JOB BENCHMARK #3
Set Magnetic Nail & Washer
on Face of Utility Pole 0.5
above Ground Elev=58.015

no.	date	revision / issue	by
4	08/08/2023	RE-ISSUED FOR SITE PLAN CONTROL APPLICATION	AJ
3	26/08/2022	RE-ISSUED FOR SITE PLAN CONTROL APPLICATION	AJ
2	12/04/2022	ISSUED FOR BUILDING PERMIT	AJ
1	01/03/2022	ISSUED FOR SITE PLAN CONTROL APPLICATION	AJ

grc architects
47 Clarence Street, Suite 401
Ottawa, Ontario K1N 1N6
t: 613-241-8203 f: 613-241-4180
info@grcarchitects.com www.grcarchitects.com

exp. **exp Services Inc.**
Professional Engineer
Civil
1000
• BUILDINGS • EARTH & ENVIRONMENT • ENERGY •
• INFRASTRUCTURE • INDUSTRIAL • MECHANICAL •

Professional Stamp
Professional Engineer
M.A. Ansari
2023/08/09
Province of Ontario

PROJECT TITLE
**NEW QATAR
EMBASSY AND
CONSULATE**
Ottawa Ontario

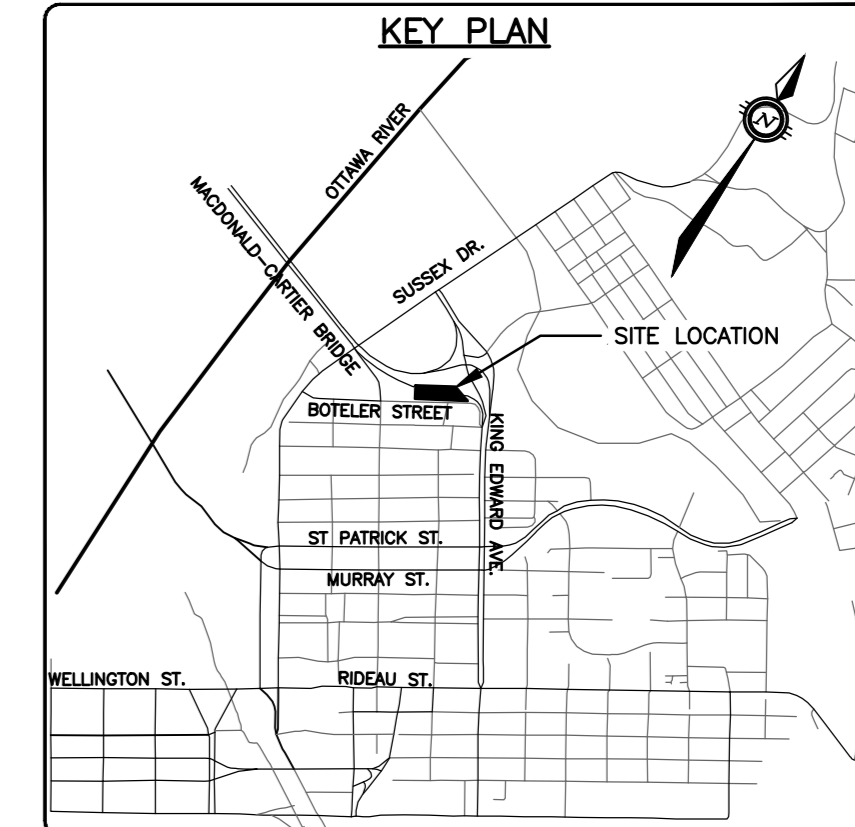
DRAWING TITLE
**PRE-DEV STORMWATER
MANAGEMENT PLAN**

date	job no.
1:250	OTT-00261664-AD
drawn A.Jarwal	drawing no.
approved A.Ansari	C-400
pkc date 05/10/2021	

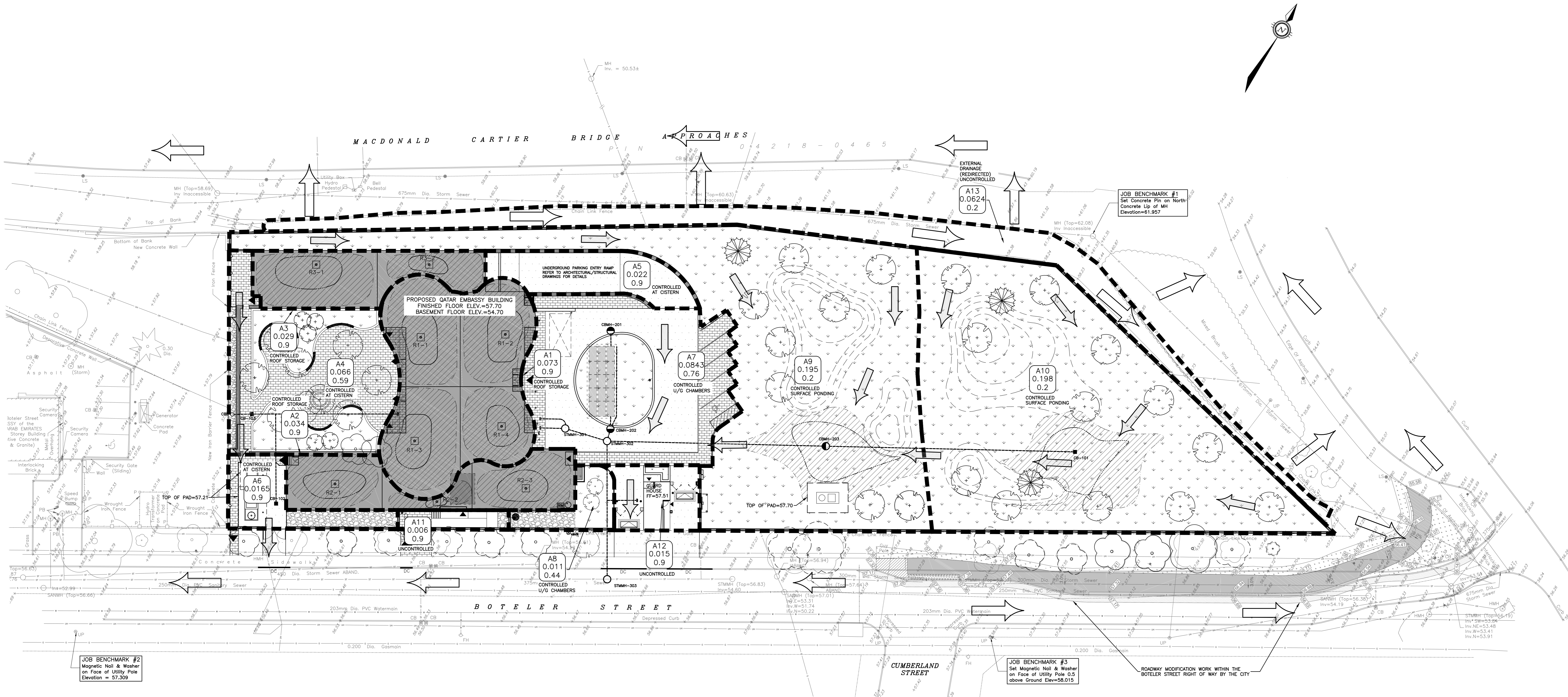
1 DO NOT SCALE THIS DRAWING.
2 CONTRACTOR TO VERIFY ALL DIMENSIONS AND NOTIFY THE ARCHITECT OF ANY DISCREPANCIES BEFORE WORK COMMENCES.
3 THIS DRAWING TO BE READ IN CONJUNCTION WITH THE FOLLOWING DRAWINGS: STRUCTURAL, MECHANICAL, ELECTRICAL.

CAUTION
THE POSITION OF ALL POLE LINES, CONDUITS, WATERMANS, SEWERS AND OTHER UNDERGROUND AND OVERGROUND UTILITIES AND STRUCTURES IS NOT NECESSARILY SHOWN ON THE CONTRACT DRAWINGS, AND WHERE SHOWN, THE ACCURACY OF THE POSITION OF SUCH UTILITIES AND STRUCTURES IS NOT GUARANTEED. BEFORE STARTING WORK, DETERMINE THE EXACT LOCATION OF ALL SUCH UTILITIES AND STRUCTURES AND ASSUME ALL LIABILITY FOR DAMAGE TO THEM.

ROOF PONDING TABLE					
Area #	2-year Ponding Depth (mm)	100-year Ponding Depth (mm)	Weir Type	No of Weirs per Drain	Weir Position
R1-1	94	144	WATTS ACCUTROL	1	3-1/4 open
R1-2	92	140	WATTS ACCUTROL	1	3-1/4 open
R1-3	93	141	WATTS ACCUTROL	1	3-1/4 open
R1-4	97	138	WATTS ACCUTROL	1	3-1/4 open
R2-1	88	136	WATTS ACCUTROL	1	3-1/4 open
R2-2	85	135	WATTS ACCUTROL	1	3-1/4 open
R2-3	88	136	WATTS ACCUTROL	1	3-1/4 open
R3-1	92	141	WATTS ACCUTROL	1	3-1/4 open
R3-2	81	129	WATTS ACCUTROL	1	3-1/4 open



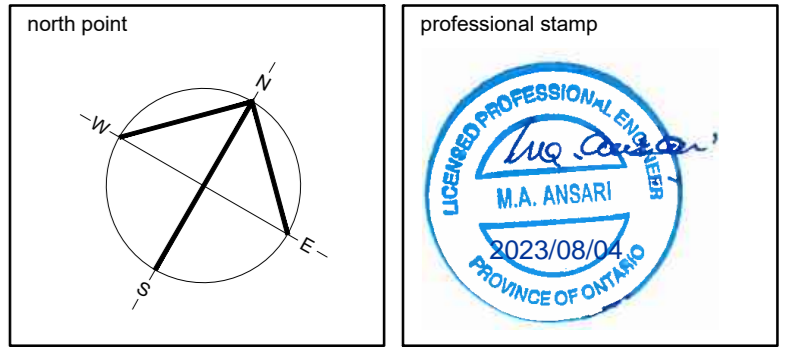
SURFACE PONDING TABLE						
Area #	2-year Ponding Depth (mm)	2-year Ponding Area (m2)	100-year Ponding Depth (mm)	100-year Ponding Area (m2)	Control Type	Ponding Location
A9	180	99	230	232	ICD (at CBM-203)	CBM-203 (TOH=57.20m)
A10	150	96	250	254	ICD (at CBM-203)	CB-101 (TOH=57.20m)



no.	date	revision / issue	by
4	08/08/2023	RE-ISSUED FOR SITE PLAN CONTROL APPLICATION	AJ
3	26/08/2022	RE-ISSUED FOR SITE PLAN CONTROL APPLICATION	AJ
2	12/04/2022	ISSUED FOR BUILDING PERMIT	AJ
1	01/03/2022	ISSUED FOR SITE PLAN CONTROL APPLICATION	AJ

grc architects
47 Clarence Street, Suite 401
Ottawa, Ontario K1N 1N6
T: 613-241-8203 F: 613-241-4180
info@grcarchitects.com www.grcarchitects.com

exp. **exp Services Inc.**
1111 Somerset Street West, Suite 100
Ottawa, Ontario K1R 7M7
T: 613-241-8203 F: 613-241-4180
info@exp-services.com www.exp-services.com



PROJECT TITLE
NEW QATAR EMBASSY AND CONSULATE
Ottawa, Ontario

DRAWING TITLE
POST-DEV STORMWATER MANAGEMENT PLAN

date	job no.
05/10/2021	OTT-00261664-AD
drawn: A.Jarwal	drawn no.
approved: A.Ansari	C-500

1. DO NOT SCALE THIS DRAWING.
2. CONTRACTOR TO VERIFY ALL DIMENSIONS AND NOTIFY THE ARCHITECT OF ANY DISCREPANCIES BEFORE WORK COMMENCES.
3. THIS DRAWING TO BE READ IN CONJUNCTION WITH THE FOLLOWING DRAWINGS: STRUCTURAL, MECHANICAL, ELECTRICAL.