

**TREE PROTECTION REQUIREMENTS:**

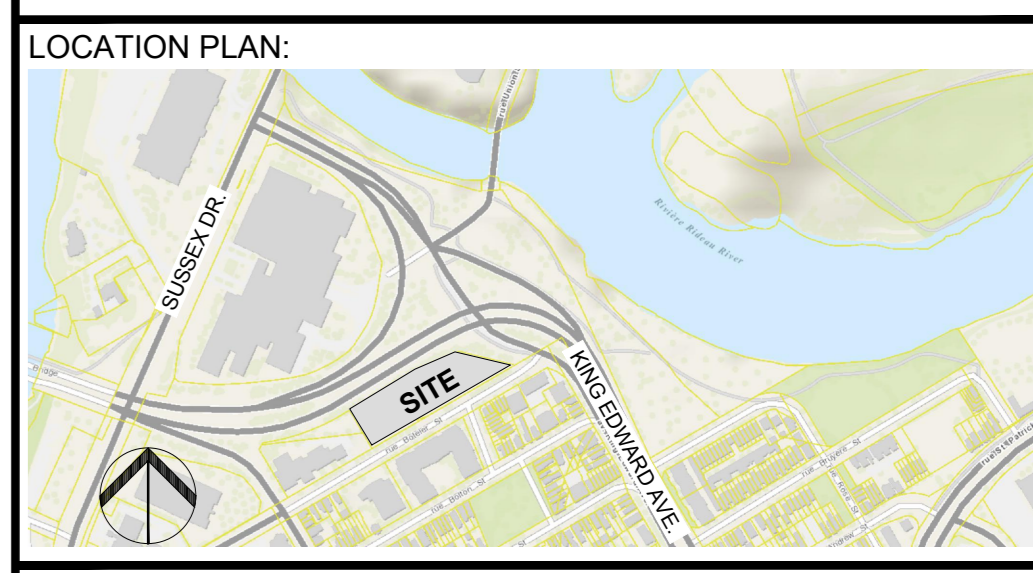
- PRIOR TO ANY WORK ACTIVITY WITHIN THE CRITICAL ROOT ZONE (CRZ = 10x DIAMETER OF A TREE), TREE PROTECTION FENCING MUST BE INSTALLED SURROUNDING THE CRITICAL ROOT ZONE AND REMAIN IN PLACE UNTIL THE WORK IS COMPLETE.
  - DO NOT PLACE ANY MATERIAL OR EQUIPMENT INCLUDING OUTHOUSES
  - DO NOT ATTACH ANY SIGNS, NOTICES OR POSTERS TO ANY TREE.
  - DO NOT RAISE OR LOWER THE EXISTING GRADE.
  - TUNNEL OR BORE WHEN DIGGING.
  - DO NOT DAMAGE THE ROOT SYSTEM, TRUNK, OR BRANCHES OF ANY TREE.
  - ENSURE THAT EXHAUST FUMES FROM ALL EQUIPMENT ARE NOT DIRECTED TOWARD ANY TREE CANOPY.
  - DO NOT EXTEND HARD SURFACE OR SIGNIFICANTLY CHANGE LANDSCAPING.
- UNLESS PLANS ARE APPROVED BY CITY FORESTRY STAFF, FOR WORK WITHIN THE CRZ:
  - DO NOT RAISE OR LOWER THE EXISTING GRADE.
  - TUNNEL OR BORE WHEN DIGGING.
  - DO NOT DAMAGE THE ROOT SYSTEM, TRUNK, OR BRANCHES OF ANY TREE.
  - ENSURE THAT EXHAUST FUMES FROM ALL EQUIPMENT ARE NOT DIRECTED TOWARD ANY TREE CANOPY.
  - DO NOT EXTEND HARD SURFACE OR SIGNIFICANTLY CHANGE LANDSCAPING.
- TREE PROTECTION FENCING MUST BE AT LEAST 1.2m IN HEIGHT, AND BE CONSTRUCTED OF RIGID OR FRAMED MATERIALS (E.G. MODULOC, STEEL PLYWOOD HOARDING, OR SNOW FENCE ON 2"x4" WOOD FRAME) WITH POSTS 2.4m APART, SUCH THAT THE FENCE LOCATION CANNOT BE ALTERED. ALL SUPPORTS AND BRACING MUST BE PLACED OUTSIDE OF THE CRZ, AND INSTALLATION MUST MINIMIZE DAMAGE TO EXISTING ROOTS. (SEE DETAIL)
- THE LOCATION OF THE TREE PROTECTION FENCING MUST BE DETERMINED BY AN ARBORIST AND DETAILED ON ANY ASSOCIATED PLANS FOR THE SITE (E.G. TREE CONSERVATION REPORT, TREE DISCLOSURE REPORT, ETC). THE PLAN AND CONSTRUCTED FENCING MUST BE APPROVED BY CITY FORESTRY STAFF PRIOR TO THE COMMENCEMENT OF WORK.
- IF THE FENCED TREE PROTECTION AREA MUST BE REDUCED TO FACILITATE CONSTRUCTION, MITIGATION MEASURES MUST BE PRESCRIBED BY AN ARBORIST AND APPROVED BY CITY FORESTRY STAFF. THESE MAY INCLUDE THE PLACEMENT OF PLYWOOD, WOOD CHIPS OR STEEL PLATING OVER THE ROOTS FOR PROTECTION OR THE PROPER PRUNING AND CARE OF ROOTS WHERE ENCOUNTERED.

**BY-LAWS:**

ALL CITY-OWNED TREES ARE PROTECTED UNDER THE MUNICIPAL TREES AND NATURAL AREAS PROTECTION BY-LAW (2006-279), WITHIN THE URBAN AREA.

PRIVATELY-OWNED TREES GREATER THAN 50cm IN DIAMETER ON LOTS, 1 HECTARE IN SIZE OR LESS, AND TREES GREATER THAN 10cm IN DIAMETER ON LOTS GREATER THAN 1 HECTARE, ARE PROTECTED UNDER THE URBAN TREE CONSERVATION BY-LAW (2009-200).

**2 TREE PROTECTION FENCING**  
SCALE 1:20



**ARCHITECTS**  
**grc architects**  
47 Clarence Street, Suite 401  
Ottawa, Ontario K1N 9K1  
t: 613-241-8203 f: 613-241-4180  
info@grcarchitects.com www.grcarchitects.com

**GENERAL NOTES**

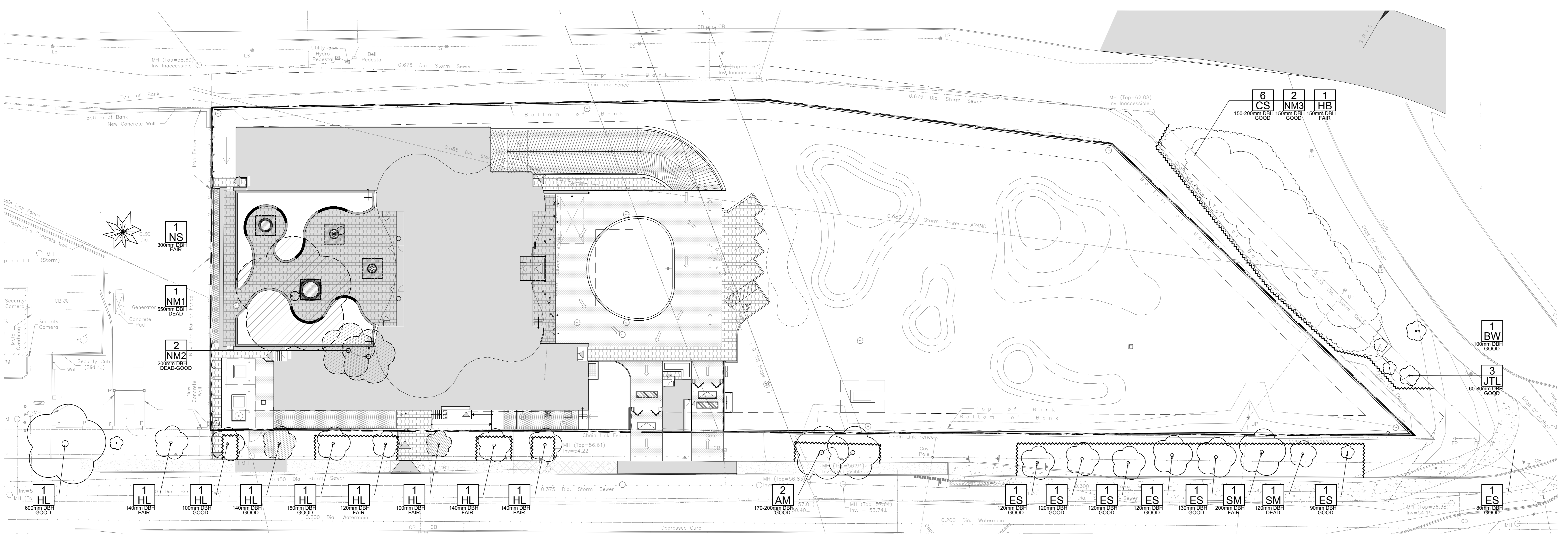
- IT IS THE RESPONSIBILITY OF THE APPROPRIATE CONTRACTOR OR OFFICIAL TO REPORT ANY ERRORS, OMISSIONS OR DISCREPANCIES ON THIS PLAN WITH ACTUAL SITE CONDITIONS TO THE LANDSCAPE ARCHITECT BEFORE PROCEEDING WITH CONSTRUCTION.
- THE CONTRACTOR IS TO NOTIFY ALL UTILITY COMPANIES AND AUTHORITIES PRIOR TO ANY EXCAVATION AND ASCERTAIN LOCATIONS OF UNDERGROUND SERVICES.
- THE CONTRACTOR IS TO REINSTATE ALL AREAS AND ITEMS DAMAGED AS A RESULT OF CONSTRUCTION ACTIVITY.
- THE CONTRACTOR IS TO COMPLY WITH ALL PERTINENT CODES AND BY-LAWS.
- THE CONTRACTOR IS TO MAINTAIN A POSITIVE SURFACE RUN-OFF THROUGHOUT THE ENTIRE CONSTRUCTION PERIOD.
- THE LANDSCAPE ARCHITECT IS NOT RESPONSIBLE FOR SUBSURFACE CONDITIONS.
- THE CONTRACTOR IS TO IDENTIFY ALL EXISTING TREES TO REMAIN ON SITE WITH THE LANDSCAPE ARCHITECT PRIOR TO CONSTRUCTION.
- THE CONTRACTOR IS TO STAKE THE PROPOSED LOCATION OF ALL PLANT MATERIAL IN CONJUNCTION WITH THE LANDSCAPE ARCHITECT PRIOR TO EXCAVATION.
- MINIMUM DISTANCES FOR SELECTED DECIDUOUS TREES ARE AS FOLLOWS:
  - BUILDING FOUNDATIONS 7.5M
  - SIDEWALKS 1.5M
  - PUBLIC STREETS 2.5M
  - UNDERGROUND INFRASTRUCTURE 2.0M
- ALL TREES WITHIN 1M OF UNDERGROUND UTILITY TRENCHES ARE TO BE EXCAVATED BY HAND.
- REMOVE ALL PROTECTIVE WRAPPING FROM TREE TRUNKS AFTER INSTALLATION.
- STAKING OF TREES SHALL ONLY BE PERFORMED IF NECESSARY.
- ENSURE THAT MULCH IS PULLED BACK A MIN. DISTANCE OF 75MM FROM BASE OF TREE TRUNK.

**LEGEND**

	PROPERTY LINE
	TYPE I LIMIT PAVERS
	TYPE II LIMIT PAVERS
	PROPOSED ASPHALT DRIVEWAY (REFER TO CIVIL)
	PROPOSED CONCRETE PAVEMENT (REFER TO CIVIL)
	PROPOSED RIVERSTONE
	EXISTING CONCRETE SIDEWALK
	PROPOSED C.I.P. CONCRETE RETAINING WALL
	PROPOSED GRANITE SEATING TOP
	300mm WIDE CONCRETE CURB, 150mm ABOVE GRADE, 150mm DEPTH ON MEDIUM SAND BLAST FINISH (REFER TO CIVIL)
	EXISTING TREE GROUPING TO REMAIN
	TREE PROTECTION FENCING

**EXISTING TREE LIST**

KEY	QTY.	BOTANICAL NAME	COMMON NAME	SIZE	CONDITION	REMARKS	OWNERSHIP
AM	2	Acer glabrate	Amur Maple	170-200mm DBH	GOOD	TO REMAIN	CITY OF OTTAWA (R.O.W. TREES)
BW	1	Juglans nigra	Black Walnut	100mm DBH	GOOD	TO REMAIN	CITY OF OTTAWA
CS	6	Picea pungens	Colorado Spruce	150-200mm DBH	GOOD	TO REMAIN	OUTSIDE PROPERTY LINE
ES	7	Ulmus ssp.	Elm Species	80-120mm DBH	FAIR-GOOD	TO REMAIN	CITY OF OTTAWA (R.O.W. TREES)
HB	1	Celtis occidentalis	Hickory	100mm DBH	FAIR	TO REMAIN, LEAF GALL	CITY OF OTTAWA
HL	9	Quercus bicolor	Honey Locust	100-500mm DBH	FAIR-GOOD	7 TO REMAIN, 2 TO BE REMOVED	CITY OF OTTAWA (R.O.W. TREES)
JTL	3	Syringa reticulata	Japanese Tree Lilac	60-80mm DBH	GOOD	TO REMAIN	OUTSIDE PROPERTY LINE
NM1	1	Acer platanoides	Norway Maple	150-500mm DBH	DEAD	TO BE REMOVED	PRIVATE (PROJECT SITE - 187 BOTELER STREET)
NM2	2	Acer platanoides	Norway Maple	150-500mm DBH	DEAD-GOOD	TO BE REMOVED	PRIVATE (PROJECT SITE - 187 BOTELER STREET)
NM3	2	Acer platanoides	Norway Maple	150-500mm DBH	GOOD	TO REMAIN	CITY OF OTTAWA
NS	1	Picea abies	Norway Spruce	300mm DBH	FAIR	TO REMAIN	PRIVATE, 125 BOTELER STREET
SM	2	Acer saccharum	Sugar Maple	120-200mm DBH	DEAD-GOOD	TO REMAIN	CITY OF OTTAWA (R.O.W. TREES)



**1 TREE CONSERVATION REPORT**  
SCALE 1:250

No.	Issue	Date	DR	CK
7	REISSUED FOR SITE PLAN CONTROL APPLICATION	11/03/23	LC	JL
6	REISSUED FOR SITE PLAN CONTROL	08/08/23	SL	JL
5	REVISED AS PER CITY 2nd REVIEW COMMENTS	04/14/23	LC	JL
4	REISSUED FOR SITE PLAN CONTROL	08/26/22	SL	JL
3	ISSUED FOR BUILDING PERMIT	04/12/22	LC	JL
2	ISSUED FOR 99%	03/18/22	LC	JL
1	ISSUED FOR SITE PLAN CONTROL APPLICATION	03/01/22	LC	JL

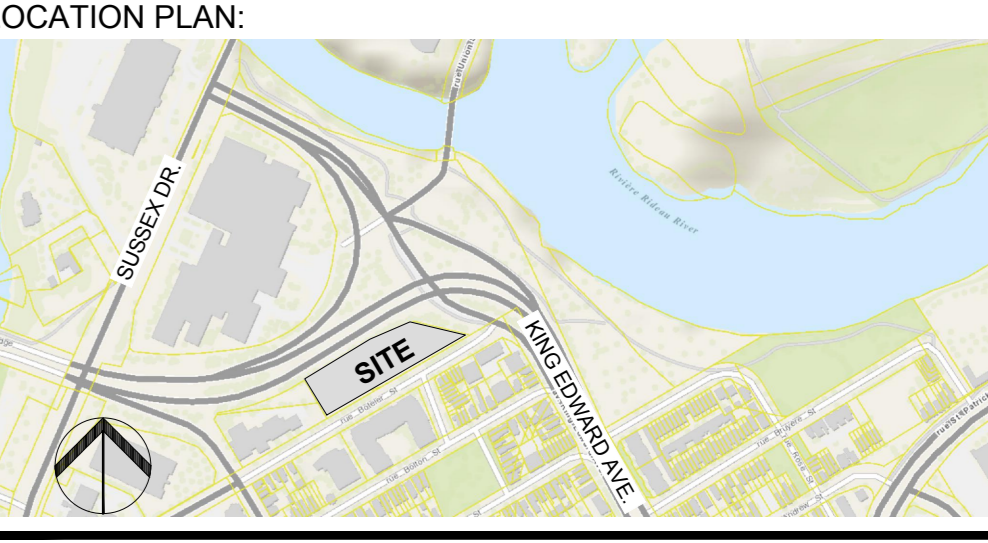
**JAMES B. LENNOX & ASSOCIATES INC.**  
**LANDSCAPE ARCHITECTS**  
3332 CARLING AVENUE OTTAWA, ONTARIO K2H 3A8  
Tel: (613) 722-5168 Fax: (1-866) 343-3942

**PROJECT**  
**QATAR NEW EMBASSY & CONSULATE**  
BOTELER STREET  
OTTAWA, ON

**DRAWING**  
**TREE CONSERVATION REPORT**

	<b>SCALE</b>
	SEE PLAN
	<b>START DATE</b>
	JUNE, 2019
<b>PROJECT NO.</b>	20-GRC-2018

<b>PROJECT NORTH</b>	<b>DRAWING NO.</b>
	TCR
	PLLOT SIZE A.0



**grc architects**  
47 Clarence Street, Suite 401  
Ottawa, Ontario K1N 9K1  
t: 613-241-8203 f: 613-241-4180  
info@grcarchitects.com www.grcarchitects.com

- GENERAL NOTES**
- IT IS THE RESPONSIBILITY OF THE APPROPRIATE CONTRACTOR OR OFFICIAL TO REPORT ANY ERRORS, OMISSIONS OR DISCREPANCIES ON THIS PLAN WITH ACTUAL SITE CONDITIONS TO THE LANDSCAPE ARCHITECT BEFORE PROCEEDING WITH CONSTRUCTION.
  - THE CONTRACTOR IS TO NOTIFY ALL UTILITY COMPANIES AND AUTHORITIES PRIOR TO ANY EXCAVATION AND ASCERTAIN LOCATIONS OF UNDERGROUND SERVICES.
  - THE CONTRACTOR IS TO REINSTATE ALL AREAS AND ITEMS DAMAGED AS A RESULT OF CONSTRUCTION ACTIVITY.
  - THE CONTRACTOR IS TO COMPLY WITH ALL PERTINENT CODES AND BY-LAWS.
  - THE CONTRACTOR IS TO MAINTAIN A POSITIVE SURFACE RUN-OFF THROUGHOUT THE ENTIRE CONSTRUCTION PERIOD.
  - THE LANDSCAPE ARCHITECT IS NOT RESPONSIBLE FOR SUBSURFACE CONDITIONS.
  - THE CONTRACTOR IS TO IDENTIFY ALL EXISTING TREES TO REMAIN ON SITE WITH THE LANDSCAPE ARCHITECT PRIOR TO CONSTRUCTION.
  - THE CONTRACTOR IS TO STAKE THE PROPOSED LOCATION OF ALL PLANT MATERIAL IN CONJUNCTION WITH THE LANDSCAPE ARCHITECT PRIOR TO EXCAVATION.
  - MINIMUM DISTANCES FOR SELECTED DECIDUOUS TREES ARE AS FOLLOWS:  
- BUILDING FOUNDATIONS 7.5M  
- SIDEWALKS 1.5M  
- PUBLIC STREETS 2.5M  
- UNDERGROUND INFRASTRUCTURE 2.0M
  - ALL TREES WITHIN 1M OF UNDERGROUND UTILITY TRENCHES ARE TO BE EXCAVATED BY HAND.
  - REMOVE ALL PROTECTIVE WRAPPING FROM TREE TRUNKS AFTER INSTALLATION.
  - STAKING OF TREES SHALL ONLY BE PERFORMED IF NECESSARY.
  - ENSURE THAT MULCH IS PULLED BACK A MIN. DISTANCE OF 75MM FROM BASE OF TREE TRUNK.

No.	Issue	Date	DR	CK
7	REISSUED FOR SITE PLAN CONTROL APPLICATION	11/03/23	LC	JL
6	REISSUED FOR SITE PLAN CONTROL	08/08/23	SL	JL
5	REVISED AS PER CITY 2ND REVIEW COMMENTS	04/14/23	LC	JL
4	REISSUED FOR SITE PLAN CONTROL	08/26/22	SL	JL
3	ISSUED FOR BUILDING PERMIT	04/12/22	LC	JL
2	ISSUED FOR 99%	03/18/22	LC	JL
1	ISSUED FOR SITE PLAN CONTROL APPLICATION	03/01/22	LC	JL

**JAMES B. LENNOX & ASSOCIATES INC.**  
**LANDSCAPE ARCHITECTS**  
332 CARLING AVENUE OTTAWA, ONTARIO K3H 5A8  
Tel: (613) 722-5168 Fax: 1(866) 343-3942

**PROJECT**  
**QATAR NEW EMBASSY & CONSULATE**  
BOTELER STREET  
OTTAWA, ON

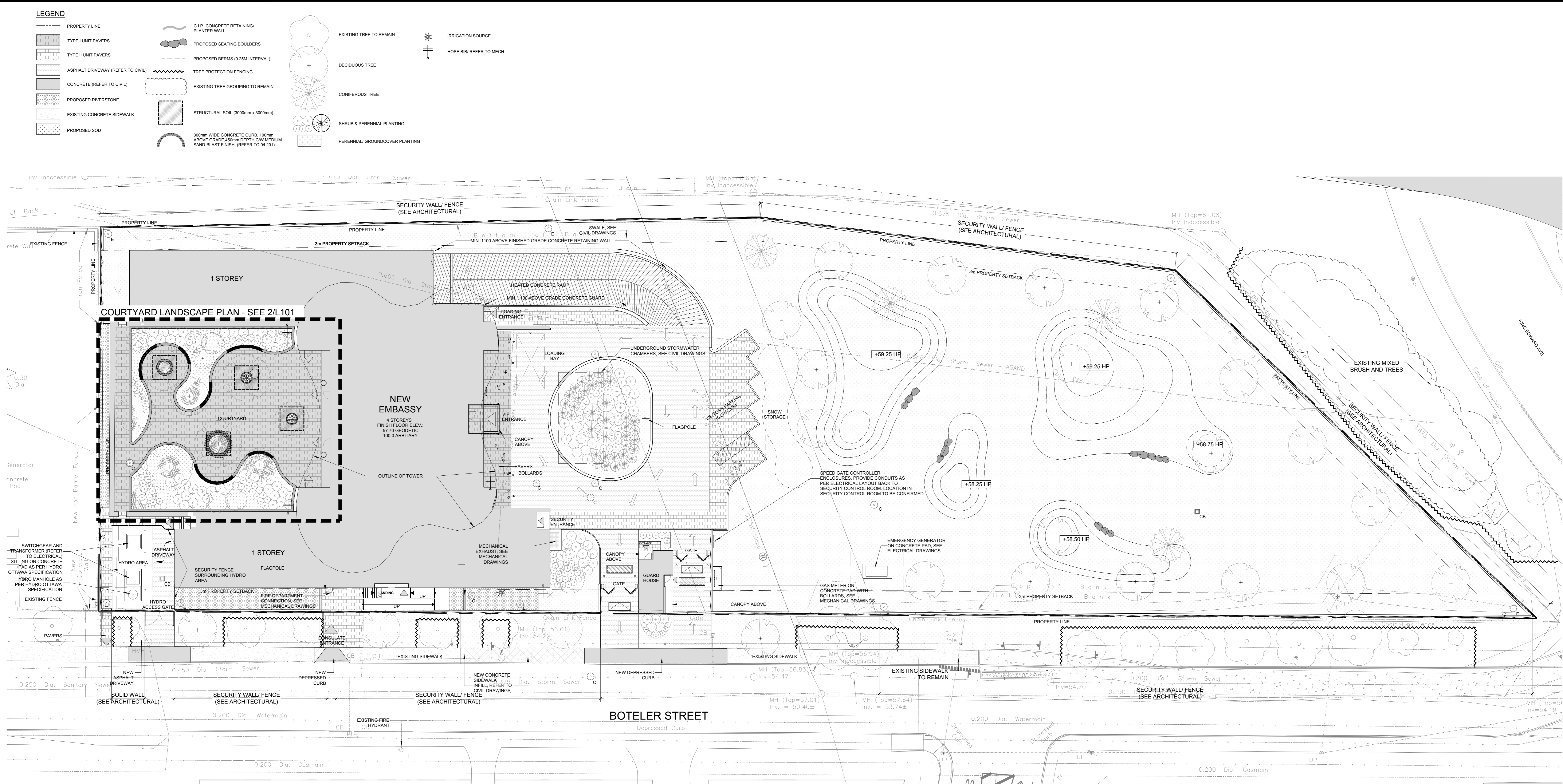
**DRAWING**  
**LANDSCAPE PLAN**

STAMP	SCALE
	SEE PLAN
	START DATE
	JUNE, 2019
	PROJECT NO.
	20-GRC-2018

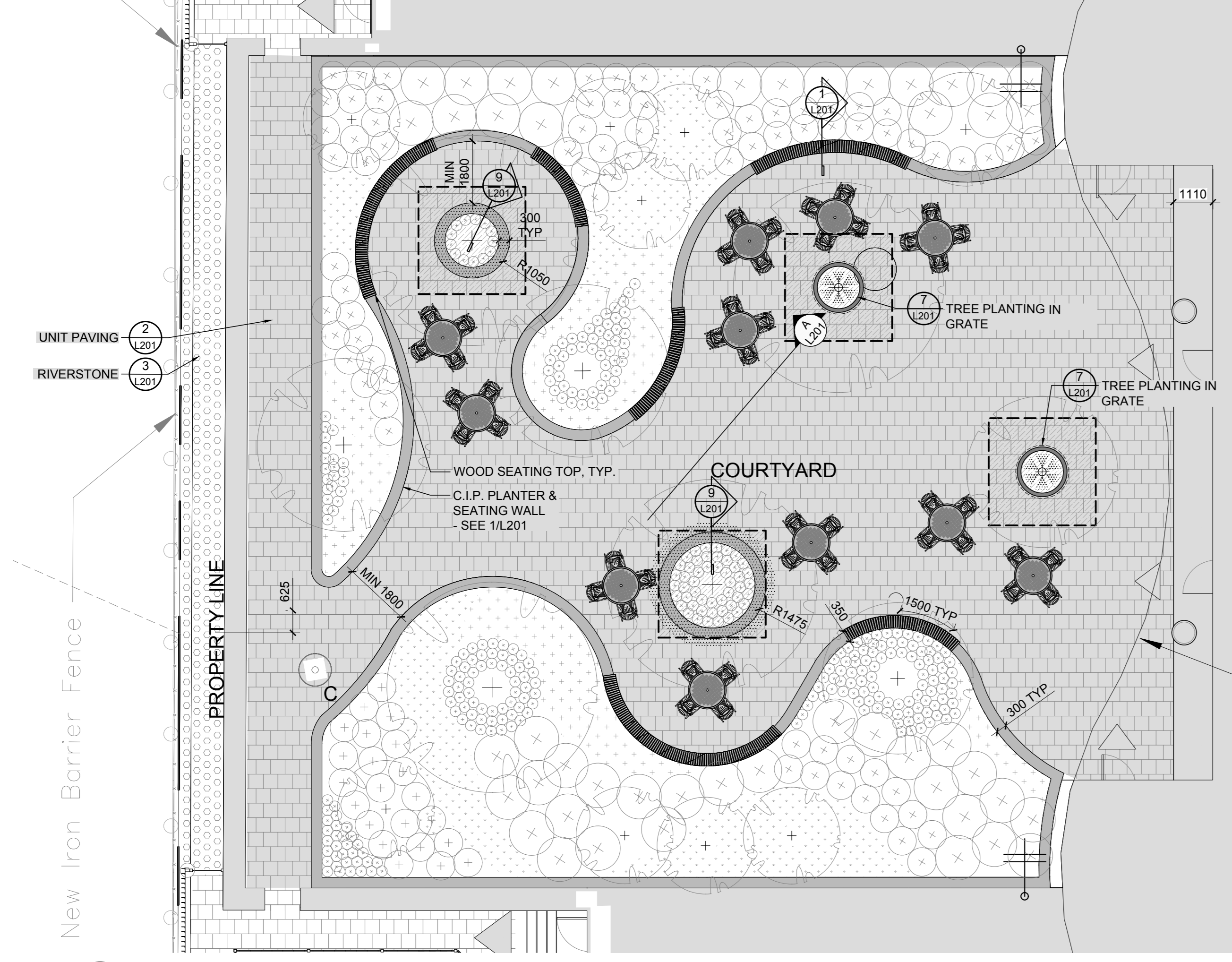
**PROJECT NORTH**

**DRAWING NO.**

**L101**  
PLOT SIZE A.0



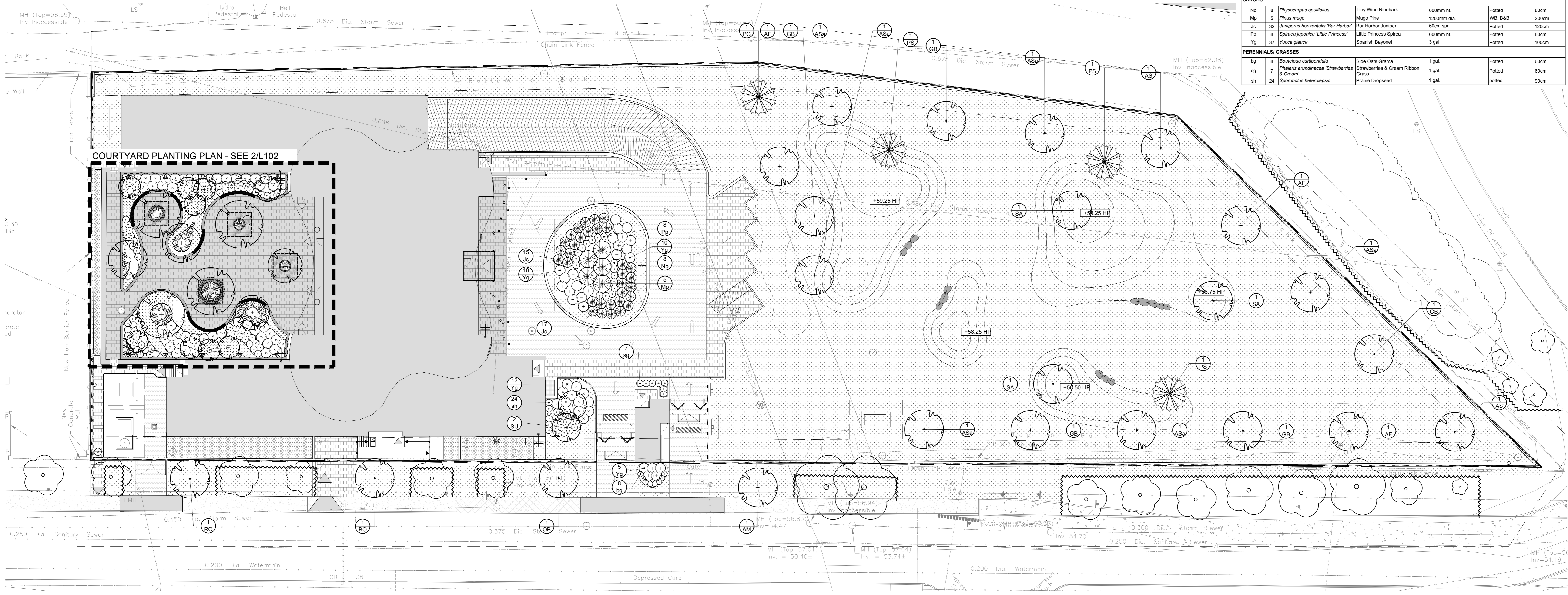
**1 LANDSCAPE PLAN**  
SCALE 1:200



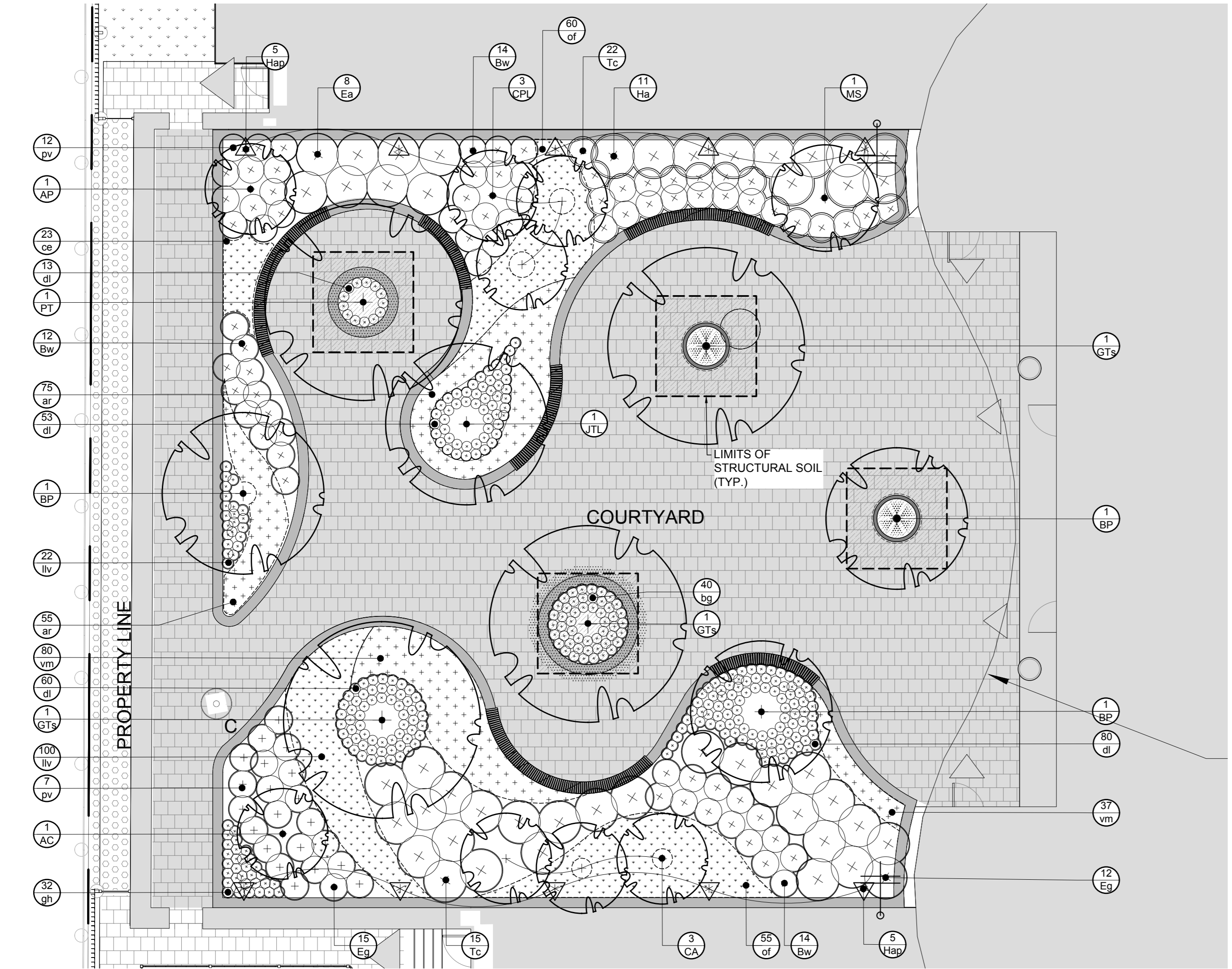
**2 COURTYARD LANDSCAPE PLAN**  
SCALE 1:100

**LEGEND**

	PROPERTY LINE		C.I.P. CONCRETE RETAINING PLANTER WALL		EXISTING TREE TO REMAIN
	TYPE I UNIT PAVERS		PROPOSED SEATING BOULDERS		DECIDUOUS TREE
	TYPE II UNIT PAVERS		PROPOSED BERMS (0.25m INTERVAL)		CONIFEROUS TREE
	ASPHALT DRIVEWAY (REFER TO CIVIL)		TREE PROTECTION FENCING		SHRUB & PERENNIAL PLANTING
	CONCRETE (REFER TO CIVIL)		EXISTING TREE GROUPING TO REMAIN		PERENNIAL/GROUNDCOVER PLANTING
	PROPOSED RIVERSTONE		STRUCTURAL SOIL (3000mm x 3000mm)		IRRIGATION SOURCE
	EXISTING CONCRETE SIDEWALK		300mm WIDE CONCRETE CURB, 100mm ABOVE GRADE, 400mm DEPTH C/W MEDIUM SAND-BLAST FINISH (REFER TO 9/201)		HOSE BIB REFER TO MECH
	PROPOSED SOD				



**1 PLANTING PLAN**  
SCALE 1:200



**2 COURTYARD PLANTING PLAN**  
SCALE 1:100

**LEGEND**

	TYPE I UNIT PAVERS		C.I.P. CONCRETE RETAINING PLANTER WALL
	TYPE II UNIT PAVERS		TREE GRATE
	PROPOSED LARGE DECIDUOUS TREE 60mm Ø CALIPER		PROPOSED SMALL DECIDUOUS TREE 15 GALLON POT
	SHRUB & PERENNIAL PLANTING		PERENNIAL/GROUNDCOVER PLANTING
	LANDSCAPE CATCH BASIN (REFER TO CIVIL)		300mm WIDE CONCRETE CURB, 100mm ABOVE GRADE, 400mm DEPTH C/W MEDIUM SAND-BLAST FINISH (REFER TO 9/201)
	IRRIGATION SOURCE		HOSE BIB REFER TO MECH

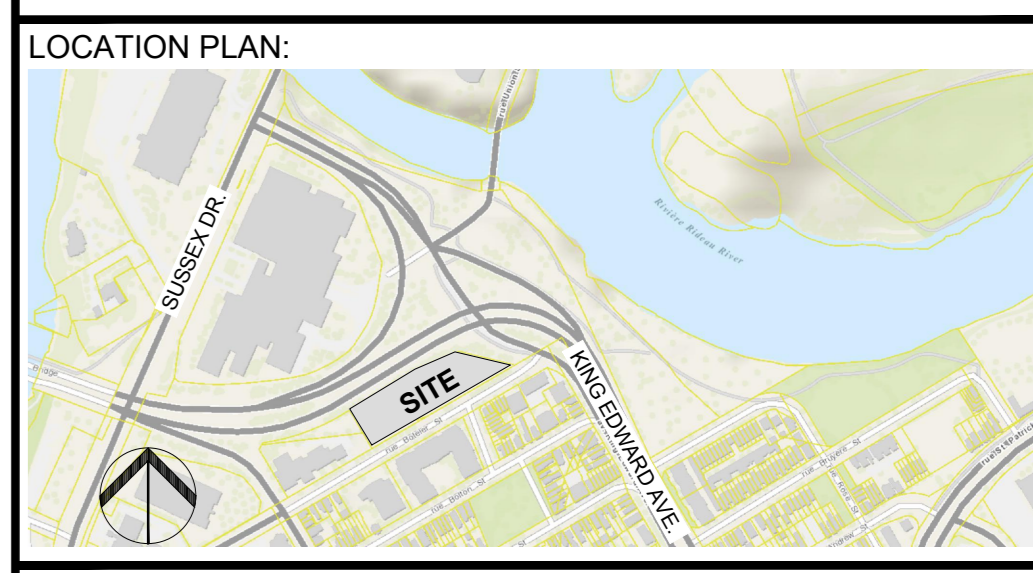
**PROPOSED PLANT LIST - COURTYARD**

KEY	QTY	BOTANICAL NAME	COMMON NAME	SIZE	CONDITION	SPACING
<b>DECIDUOUS TREES (LARGE)</b>						
BP	3	Betula populifolia	Gray Birch	50mm dia	Clump, WB, Specimen	n/a
GTS	3	Cedrela tomentosa var. neriis	Shademaster Honeylocust	60mm dia	WB, B&B, Specimen	n/a
PT	1	Populus alba	White Poplar	60mm dia	WB, Specimen	n/a
<b>DECIDUOUS TREES (SMALL)</b>						
AC	1	Acer palmatum 'Bloodgood'	Bloodgood Japanese Maple	200mm ht.	WB, B&B, Treform	n/a
AP	1	Acer palmatum 'Bloodgood'	Bloodgood Japanese Maple	200mm ht.	B&B, Specimen	n/a
CA	3	Cornus alternifolia	Pagoda Dogwood	175cm ht., 10 gal.	Potted, Treform	n/a
CPL	3	Syringa vulgaris 'Katherine Havemeyer'	Katherine Havemeyer Lilac	200cm ht.	WB, B&B	n/a
JTL	1	Syringa reticulata	Japanese Tree Lilac	200cm ht.	WB, B&B	n/a
MS	1	Magnolia stellata 'Royal Star'	Royal Star Magnolia	200cm ht.	B&B, Specimen	n/a
<b>SHRUBS</b>						
Bw	43	Buxus 'Green Velvet'	Green Velvet Boxwood	3 gal.	Potted	80cm
Ea	8	Euroyrmus alatus 'Compactus'	Dwarf Burning Bush	60cm ht.	p	100cm
EG	27	Euroyrmus torreyi 'Silvermist Candy'	Wintercreeper	3 gal.	Potted	80cm
Ha	11	Hydrangea arborescens 'Annabelle'	Annabelle Hydrangea	50cm ht., 7 gal.	Potted	120cm
Tc	37	Taxus cuspidata 'Nana'	Dwarf Japanese Yew	50cm spr.	B&B	80cm
<b>PERENNIALS/GRASSES</b>						
lg	40	Bouteloua gracilis 'Blonde Ambition'	Blonde Ambition Grama Grass	1 gal.	Potted	30cm
ce	23	Carex eburnea	Bristle Leaf Sedge	1 gal.	Potted	20cm
dl	206	Hemerocallis 'Stella D'Or'	Stella D'Or Day Lily	2 gal.	Potted	50cm
gn	32	Hosta 'Guacamole'	Guacamole Hosta	1 gal.	Potted	80cm
lv	122	Convallaria majalis	Lily-of-the-valley	1 gal.	Potted	40cm
pv	19	Panicum virgatum 'Shenandoah'	Shenandoah Switch Grass	1 gal.	Potted	90cm
of	115	Matteuccia struthiopteris	Ostrich Fern	2 gal.	Potted	50cm
<b>GROUND COVER</b>						
ar	130	Aster reptans	Bugweed	1 gal.	Potted	40cm
vm	117	Vinca minor	Periwinkle	18cm	pan	40cm
<b>VINES</b>						
Hap	10	Hydrangea anomala petiolaris	Climbing Hydrangea	15 gal.	Potted, Staked	n/a

**PROPOSED PLANT LIST**

KEY	QTY	BOTANICAL NAME	COMMON NAME	SIZE	CONDITION	SPACING
<b>CONIFEROUS TREES</b>						
PG	1	Pinus glauca	White Spruce	250cm	WB	n/a
PS	3	Pinus sylvestris	Scots Pine	200cm	WB	n/a
<b>DECIDUOUS TREES (LARGE)</b>						
AF	3	Acer x freemanii 'Autumn Blaze'	Autumn Blaze Maple	60mm dia.	WB, B&B	n/a
AM	1	Acer ginnala	Amur Maple	60mm dia.	WB, B&B	n/a
AS	2	Acer saccharum	Sugar Maple	60mm dia.	WB, B&B	n/a
ASa	6	Acer saccharinum	Shade Maple	60mm dia.	WB, B&B	n/a
BO	1	Quercus macrocarpa	Bur Oak	60mm dia.	WB, B&B	n/a
GB	5	Ginkgo biloba	Maidenhair Tree	60mm dia.	WB, B&B	n/a
GB	1	Aesculus glabra	Ohio buckeye	60mm dia.	WB, B&B	n/a
RO	1	Quercus rubra	Red Oak	60mm dia.	WB, B&B	n/a
SA	3	Salix alba 'Trinity'	Weeping Golden Willow	60mm dia.	WB, B&B	n/a
<b>DECIDUOUS TREES (SMALL)</b>						
SU	2	Rhus typhina	Staghorn Sumac	2000mm	WB, B&B, Specimen	n/a
<b>SHRUBS</b>						
Nb	8	Physocarpus opulifolius	Tiny Wine Nreibark	600mm ht.	Potted	80cm
Mp	5	Pinus mugo	Mugo Pine	1200mm dia	WB, B&B	200cm
Jc	32	Juniperus horizontalis 'Bar Harbor'	Bar Harbor Juniper	60cm spr.	Potted	120cm
Pp	8	Spirea japonica 'Little Princess'	Little Princess Spirea	600mm ht.	Potted	80cm
Yg	37	Yucca glauca	Spanish Bayonet	3 gal.	Potted	100cm
<b>PERENNIALS/GRASSES</b>						
Dg	8	Dicentra cupreus	Solo Oaks Grama	1 gal.	Potted	60cm
Fr	7	Pharisis arundinacea 'Strawberries & Cream'	Strawberries & Cream Ribbon Grass	1 gal.	Potted	80cm
sh	24	Sporobolus heterolepis	Pearle Dropseed	1 gal.	Potted	90cm

وزارة الخارجية  
Ministry of Foreign Affairs  
State of Qatar دولة قطر



ARCHITECTS  
**grc architects**  
47 Clarence Street, Suite 401  
Ottawa, Ontario K1N 9K1  
t: 613-241-8203 f: 613-241-4180  
info@grcarchitects.com www.grcarchitects.com

- GENERAL NOTES
- IT IS THE RESPONSIBILITY OF THE APPROPRIATE CONTRACTOR OR OFFICIAL TO REPORT ANY ERRORS, OMISSIONS OR DISCREPANCIES ON THIS PLAN WITH ACTUAL SITE CONDITIONS TO THE LANDSCAPE ARCHITECT BEFORE PROCEEDING WITH CONSTRUCTION.
  - THE CONTRACTOR IS TO NOTIFY ALL UTILITY COMPANIES AND AUTHORITIES PRIOR TO ANY EXCAVATION AND ASCERTAIN LOCATIONS OF UNDERGROUND SERVICES.
  - THE CONTRACTOR IS TO REINSTATE ALL AREAS AND ITEMS DAMAGED AS A RESULT OF CONSTRUCTION ACTIVITY.
  - THE CONTRACTOR IS TO COMPLY WITH ALL PERTINENT CODES AND BY-LAWS.
  - THE CONTRACTOR IS TO MAINTAIN A POSITIVE SURFACE RUN-OFF THROUGHOUT THE ENTIRE CONSTRUCTION PERIOD.
  - THE LANDSCAPE ARCHITECT IS NOT RESPONSIBLE FOR SUBSURFACE CONDITIONS.
  - THE CONTRACTOR IS TO IDENTIFY ALL EXISTING TREES TO REMAIN ON SITE WITH THE LANDSCAPE ARCHITECT PRIOR TO CONSTRUCTION.
  - THE CONTRACTOR IS TO STAKE THE PROPOSED LOCATION OF ALL PLANT MATERIAL IN CONJUNCTION WITH THE LANDSCAPE ARCHITECT PRIOR TO EXCAVATION.
  - MINIMUM DISTANCES FOR SELECTED DECIDUOUS TREES ARE AS FOLLOWS:  
- BUILDING FOUNDATIONS 7.5M  
- SIDEWALKS 1.5M  
- PUBLIC STREETS 2.5M  
- UNDERGROUND INFRASTRUCTURE 2.0M
  - ALL TREES WITHIN 1M OF UNDERGROUND UTILITY TRENCHES ARE TO BE EXCAVATED BY HAND.
  - REMOVE ALL PROTECTIVE WRAPPING FROM TREE TRUNKS AFTER INSTALLATION.
  - STAKING OF TREES SHALL ONLY BE PERFORMED IF NECESSARY.
  - ENSURE THAT MULCH IS PULLED BACK A MIN. DISTANCE OF 75MM FROM BASE OF TREE TRUNK.

7	REISSUED FOR SITE PLAN CONTROL APPLICATION	11/03/23	LC	JL
6	REISSUED FOR SITE PLAN CONTROL	08/08/23	SL	JL
5	REVISED AS PER CITY 2nd REVIEW COMMENTS	04/14/23	LC	JL
4	REISSUED FOR SITE PLAN CONTROL	08/26/22	SL	JL
3	ISSUED FOR BUILDING PERMIT	04/12/22	LC	JL
2	ISSUED FOR 99%	03/18/22	LC	JL
1	ISSUED FOR SITE PLAN CONTROL APPLICATION	03/01/22	LC	JL
No.	Issue	Date	DR	CK

**JAMES B. LENNOX & ASSOCIATES INC.**  
LANDSCAPE ARCHITECTS  
332 CARLING AVENUE OTTAWA, ONTARIO K3H 5A8  
Tel: (613) 722-5168 Fax: 1(866) 343-3942

PROJECT  
**QATAR NEW EMBASSY & CONSULATE**  
BOTELER STREET  
OTTAWA, ON

DRAWING  
**LANDSCAPE PLAN**

STAMP

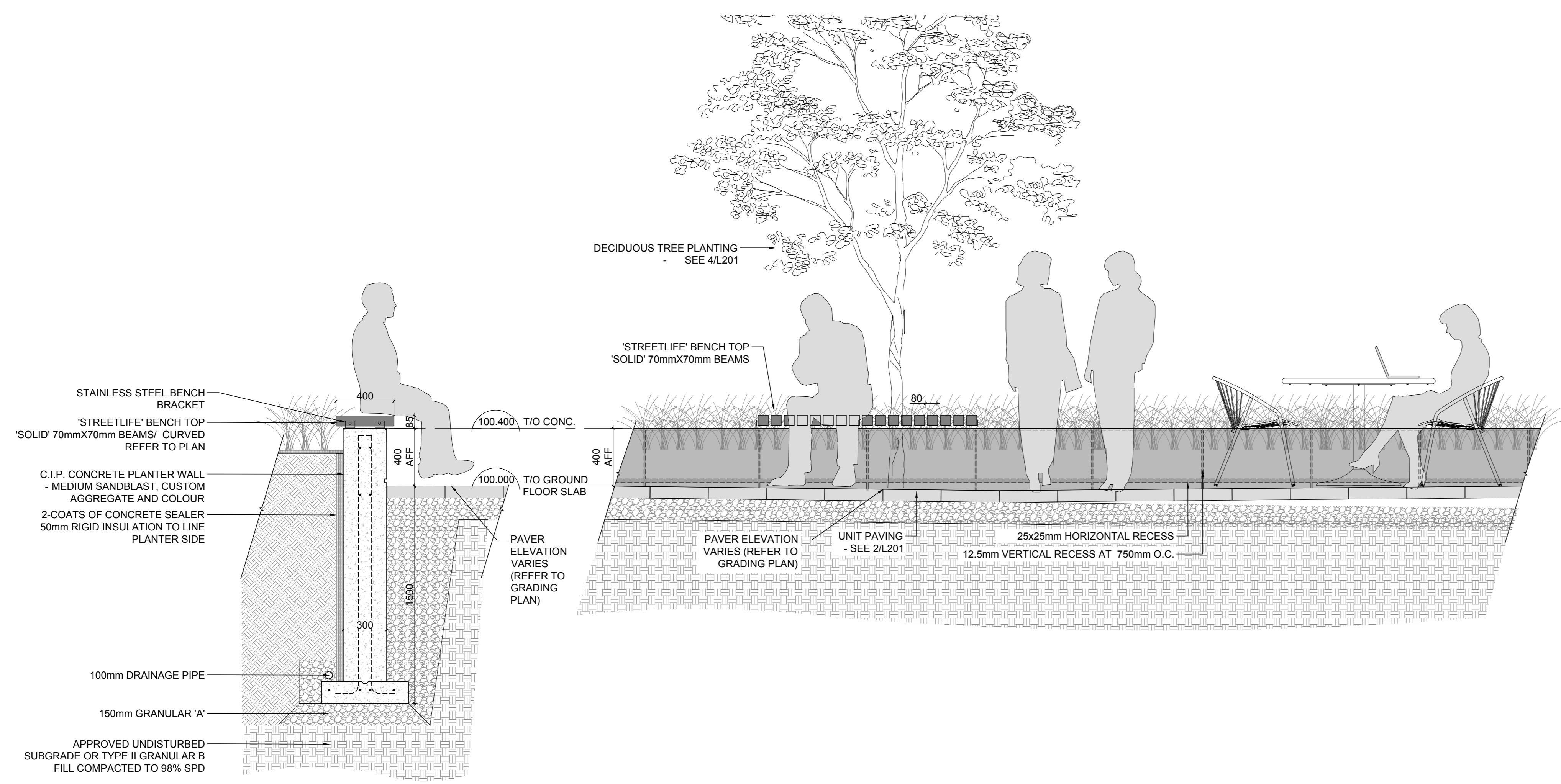
SCALE  
SEE PLAN

START DATE  
JUNE, 2019

PROJECT NO.  
20-GR-2018

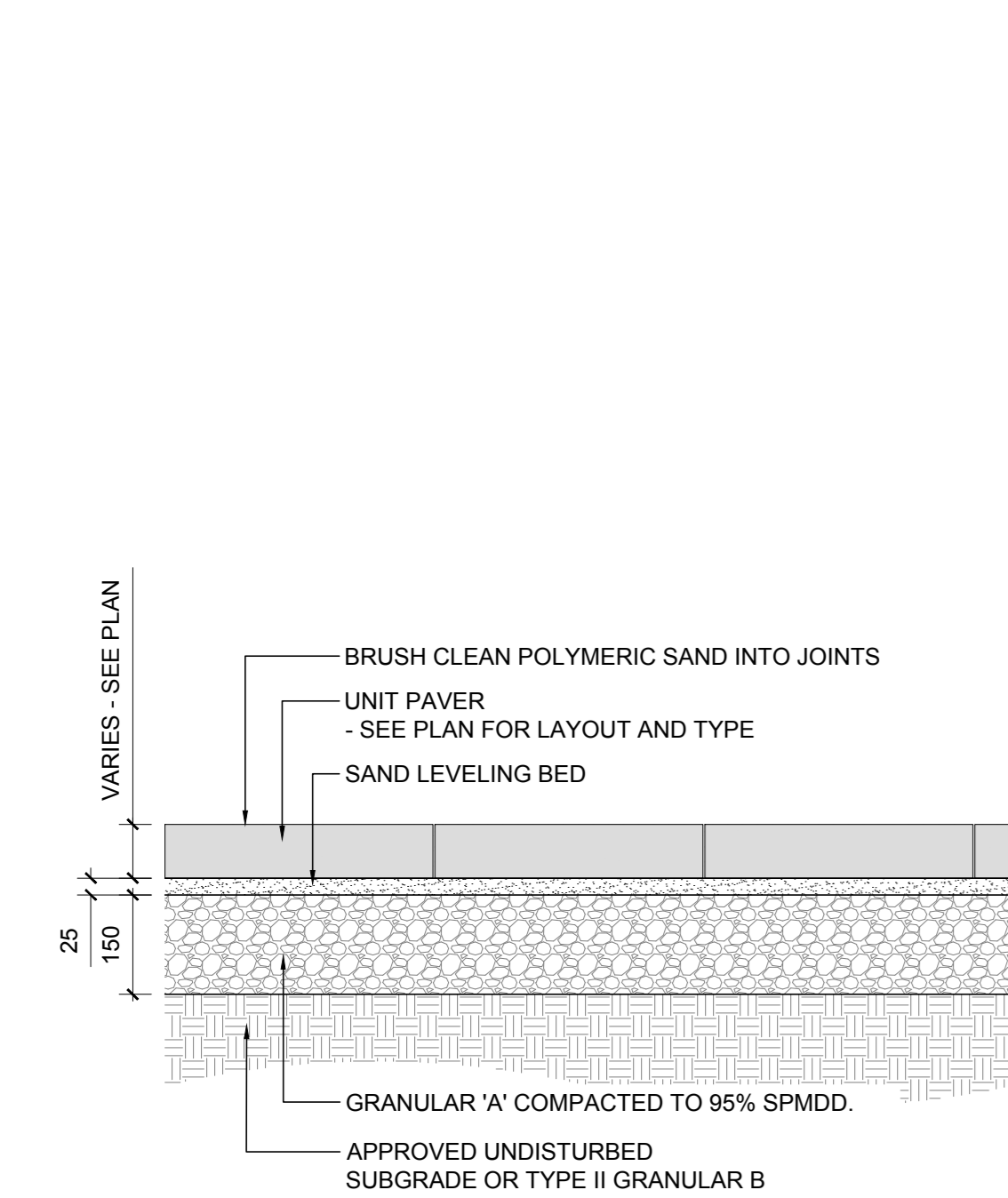
PROJECT NORTH

DRAWING NO.  
**L102**  
PLOT SIZE A.0

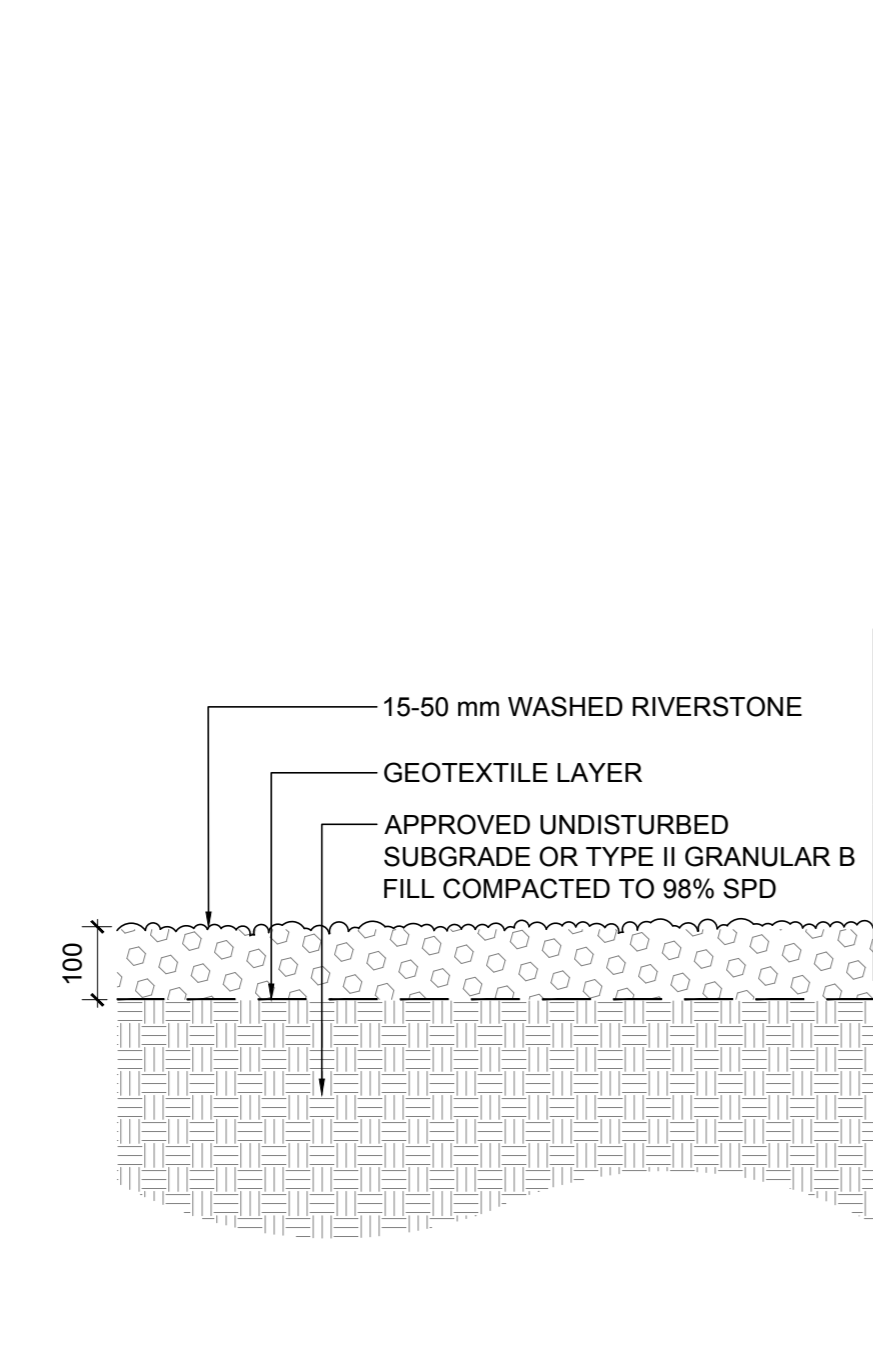


1 C.I.P. PLANTER & SEATING WALL  
SCALE 1:20

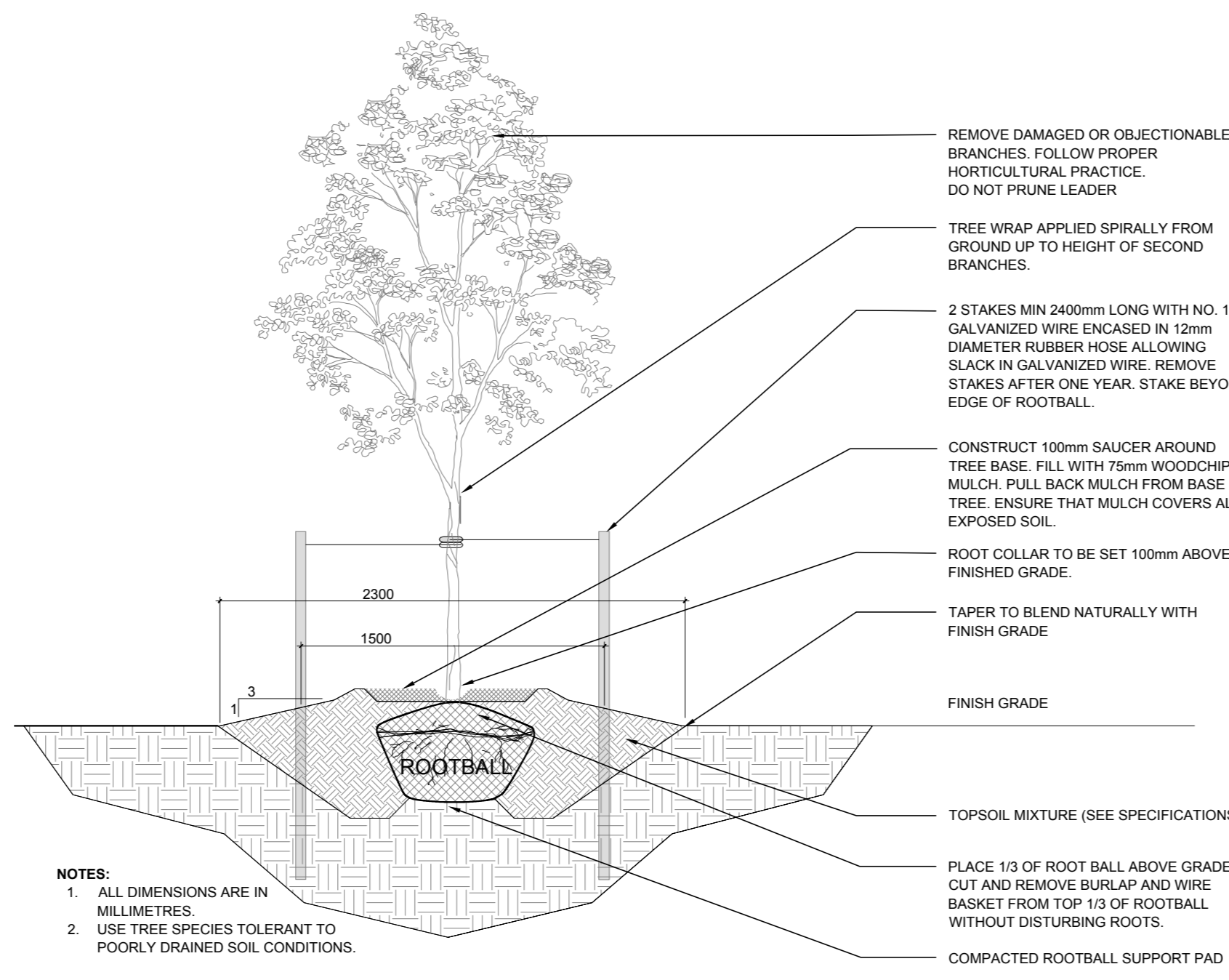
A COURTYARD PLANTER & SEATING WALL ELEVATION  
SCALE 1:20



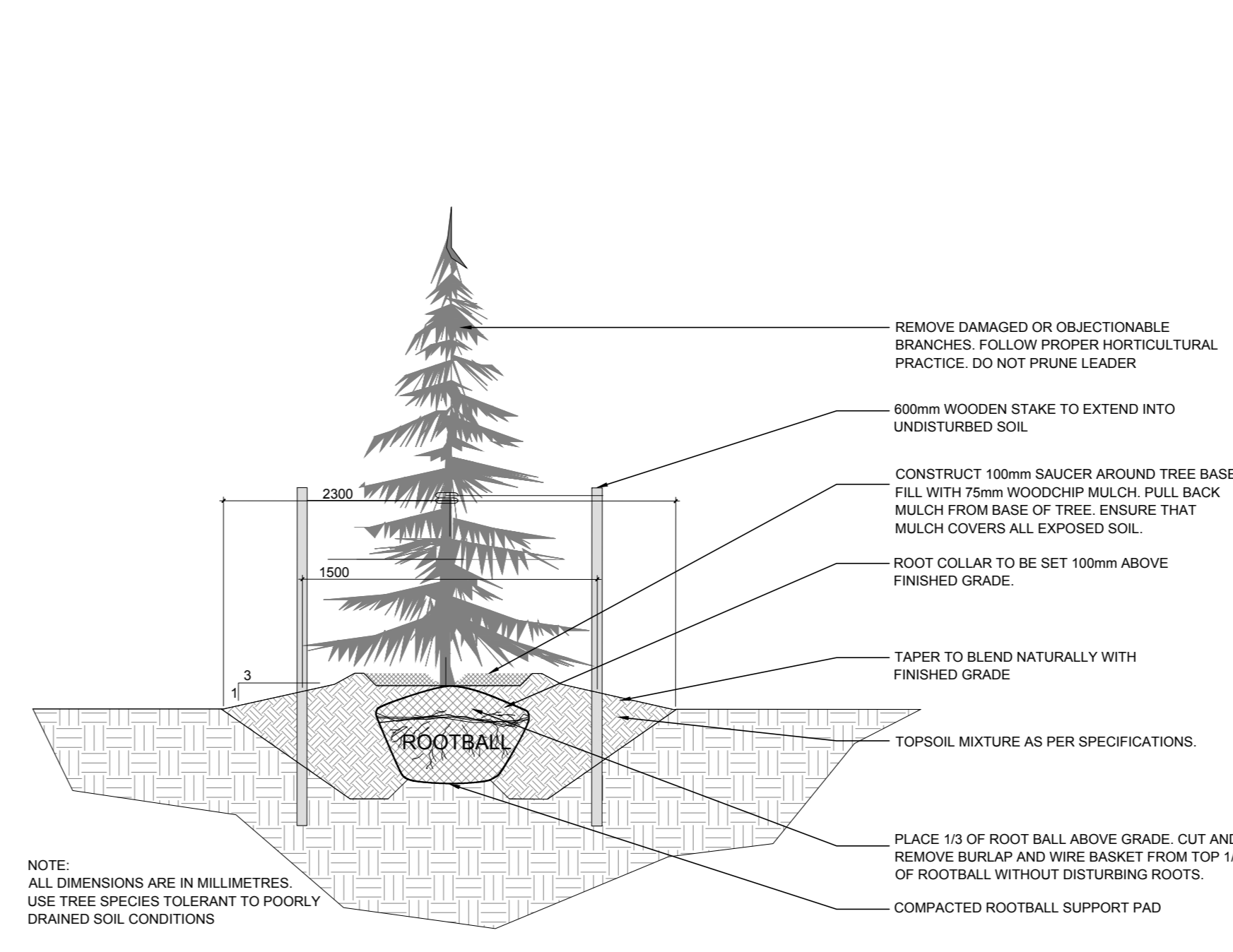
2 UNIT PAVING  
SCALE 1:10



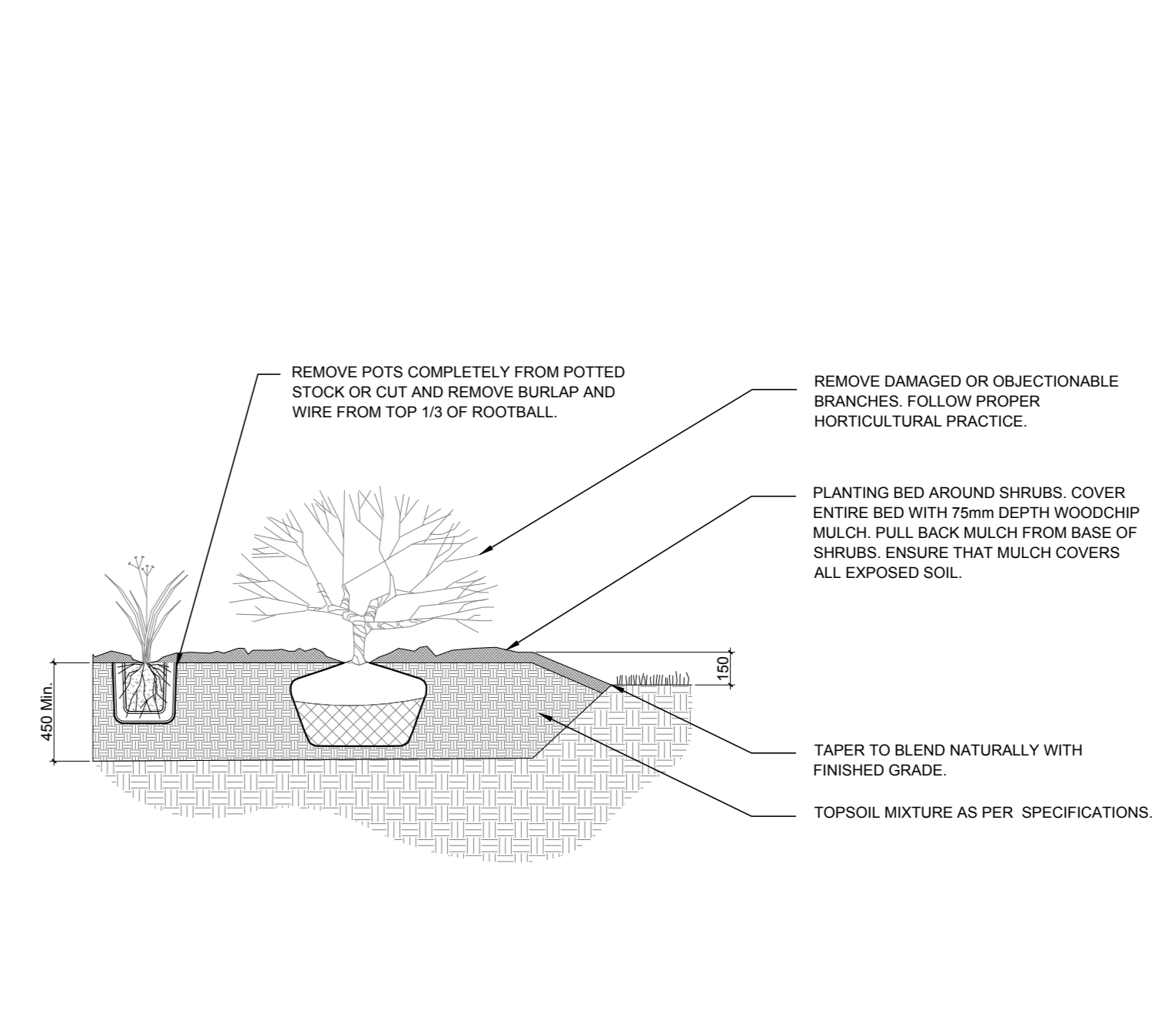
3 RIVERSTONE  
SCALE 1:10



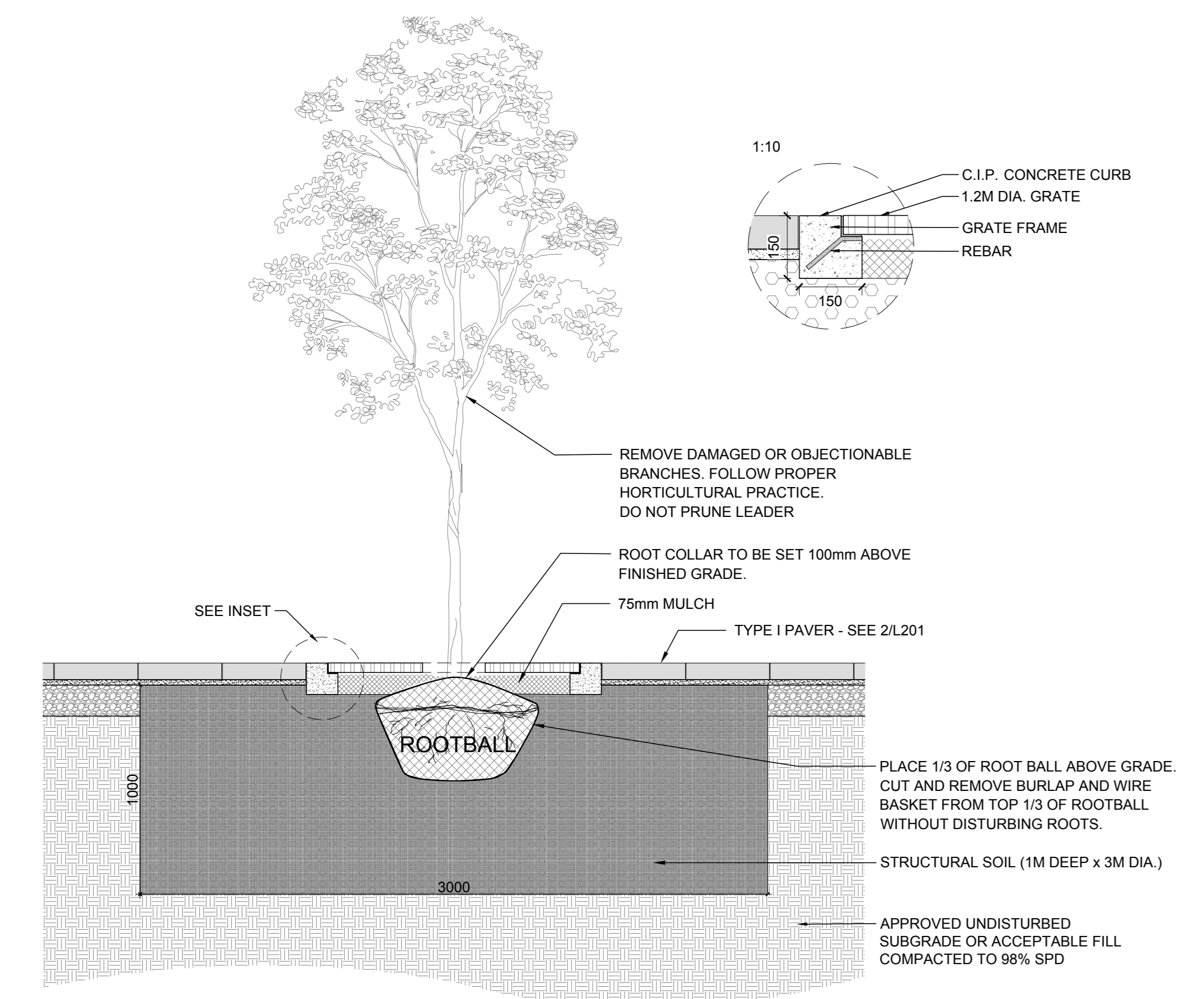
4 DECIDUOUS TREE PLANTING  
SCALE NTS



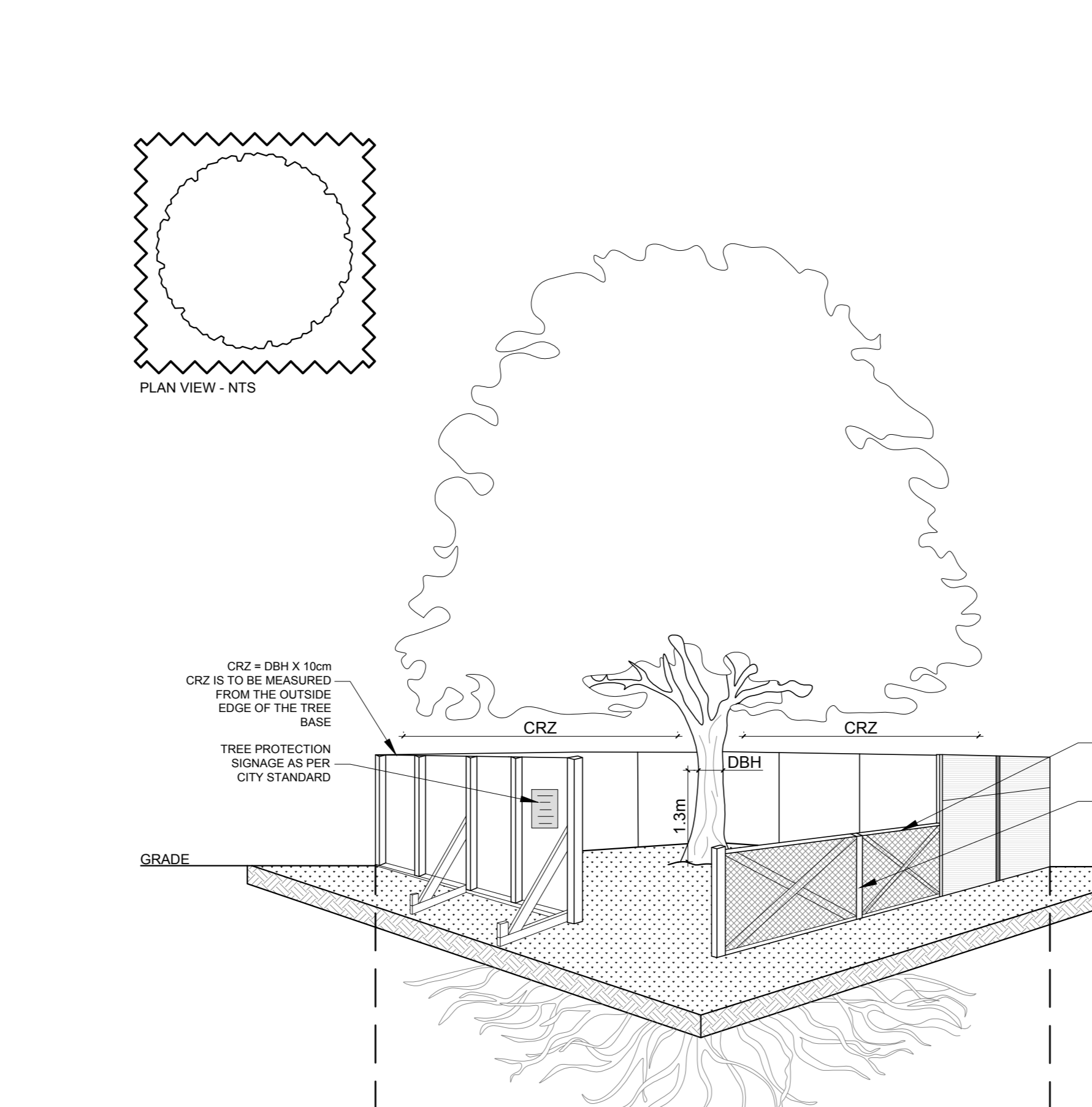
5 CONIFEROUS TREE PLANTING  
SCALE NTS



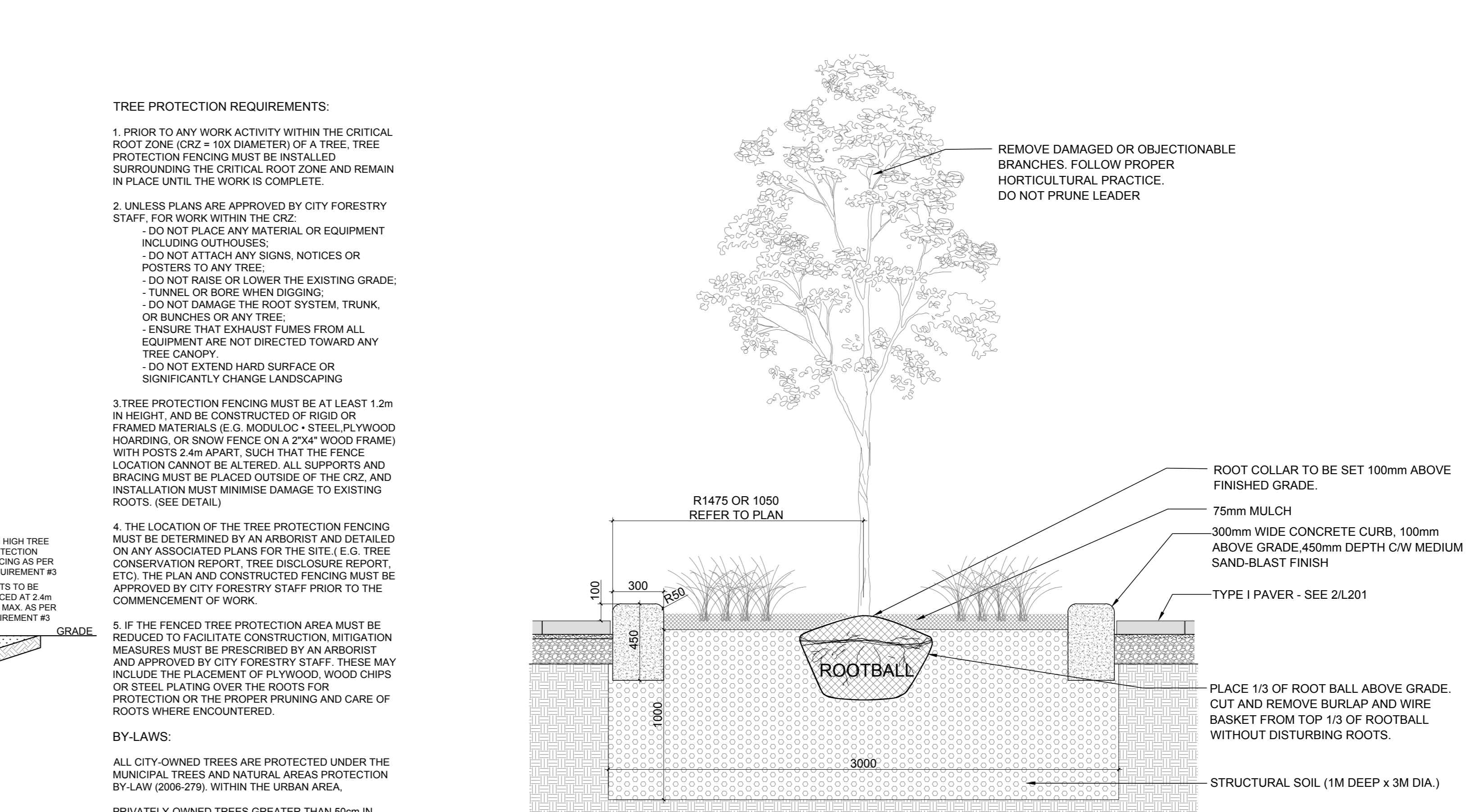
6 SHRUB/ PERENNIAL PLANTING  
SCALE NTS



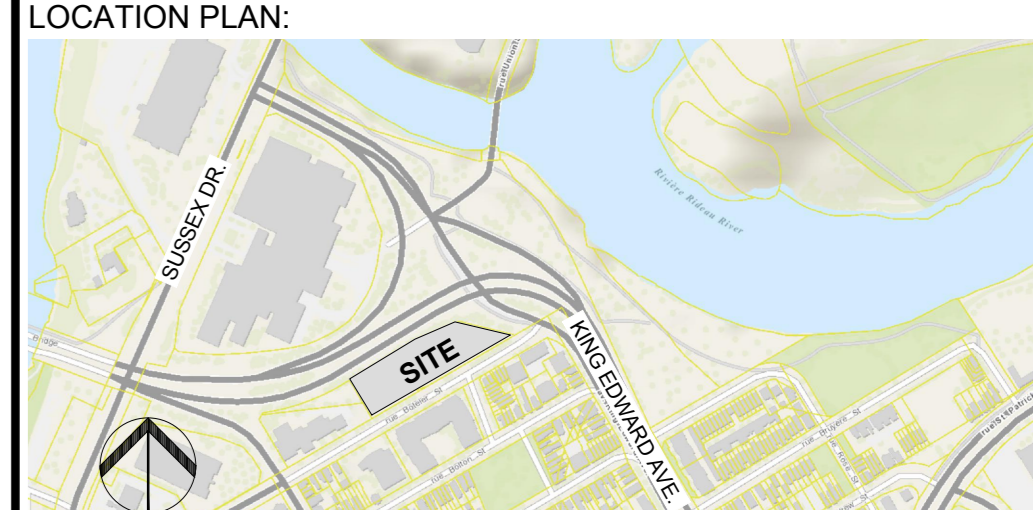
7 TREE PLANTING IN GRATE  
SCALE 1:20



8 TREE PROTECTION FENCING  
SCALE 1:20



9 TREE PLANTING IN CURB  
SCALE 1:20



ARCHITECTS  
**grc architects**  
47 Clarence Street, Suite 401  
Ottawa, Ontario K1N 9K1  
t: 613-241-8203 f: 613-241-4180  
info@grcarchitects.com www.grcarchitects.com

- GENERAL NOTES
- IT IS THE RESPONSIBILITY OF THE APPROPRIATE CONTRACTOR OR OFFICIAL TO REPORT ANY ERRORS, OMISSIONS OR DISCREPANCIES ON THIS PLAN WITH ACTUAL SITE CONDITIONS TO THE LANDSCAPE ARCHITECT BEFORE PROCEEDING WITH CONSTRUCTION.
  - THE CONTRACTOR IS TO NOTIFY ALL UTILITY COMPANIES AND AUTHORITIES PRIOR TO ANY EXCAVATION AND ASCERTAIN LOCATIONS OF UNDERGROUND SERVICES.
  - THE CONTRACTOR IS TO REINSTATE ALL AREAS AND ITEMS DAMAGED AS A RESULT OF CONSTRUCTION ACTIVITY.
  - THE CONTRACTOR IS TO COMPLY WITH ALL PERTINENT CODES AND BY-LAWS.
  - THE CONTRACTOR IS TO MAINTAIN A POSITIVE SURFACE RUN-OFF THROUGHOUT THE ENTIRE CONSTRUCTION PERIOD.
  - THE LANDSCAPE ARCHITECT IS NOT RESPONSIBLE FOR SUBSURFACE CONDITIONS.
  - THE CONTRACTOR IS TO IDENTIFY ALL EXISTING TREES TO REMAIN ON SITE WITH THE LANDSCAPE ARCHITECT PRIOR TO CONSTRUCTION.
  - THE CONTRACTOR IS TO STAKE THE PROPOSED LOCATION OF ALL PLANT MATERIAL IN CONJUNCTION WITH THE LANDSCAPE ARCHITECT PRIOR TO EXCAVATION.
  - MINIMUM DISTANCES FOR SELECTED DECIDUOUS TREES ARE AS FOLLOWS:  
- BUILDING FOUNDATIONS 7.5M  
- SIDEWALKS 1.5M  
- PUBLIC STREETS 2.5M  
- UNDERGROUND INFRASTRUCTURE 2.0M
  - ALL TREES WITHIN 1M OF UNDERGROUND UTILITY TRENCHES ARE TO BE EXCAVATED BY HAND.
  - REMOVE ALL PROTECTIVE WRAPPING FROM TREE TRUNKS AFTER INSTALLATION.
  - STAKING OF TREES SHALL ONLY BE PERFORMED IF NECESSARY.
  - ENSURE THAT MULCH IS PULLED BACK A MIN. DISTANCE OF 75MM FROM BASE OF TREE TRUNK.

6	REISSUED FOR SITE PLAN CONTROL APPLICATION	11/03/23	LC	JL
5	REISSUED FOR SITE PLAN CONTROL	08/08/23	SL	JL
4	REVISED AS PER CITY 2nd REVIEW COMMENTS	04/14/23	LC	JL
3	ISSUED FOR SITE PLAN CONTROL	08/26/22	SL	JL
2	ISSUED FOR BUILDING PERMIT	04/12/22	LC	JL
1	ISSUED FOR 99%	03/18/22	LC	JL
No.	Issue	Date	DR	CK

JAMES B. LENNOX & ASSOCIATES INC.  
LANDSCAPE ARCHITECTS  
3332 CARLING AVENUE OTTAWA, ONTARIO K2H 3A8  
Tel: (613) 722-5168 Fax: (1866) 343-3942

PROJECT  
**QATAR NEW EMBASSY & CONSULATE**  
BOTELER STREET  
OTTAWA, ON

DRAWING  
LANDSCAPE DETAILS

STAMP	SCALE
	SEE PLAN
	START DATE
	JUNE, 2019
	PROJECT NO.
	20-GRC-2018

PROJECT NORTH

DRAWING NO.  
**L201**  
PLOT SIZE A.0