

TREE PROTECTION REQUIREMENTS:

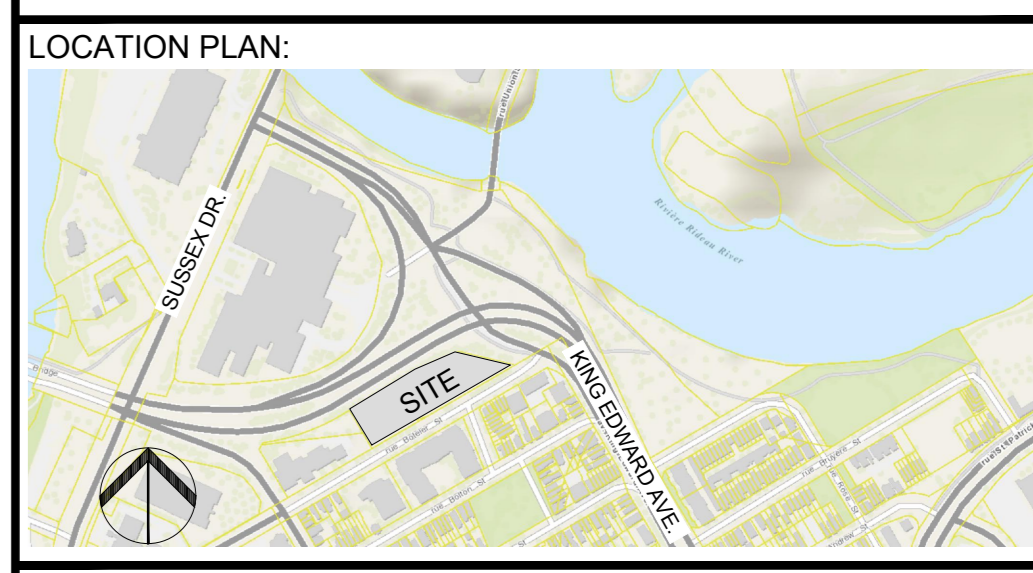
- PRIOR TO ANY WORK ACTIVITY WITHIN THE CRITICAL ROOT ZONE (CRZ = 10X DIAMETER OF A TREE), TREE PROTECTION FENCING MUST BE INSTALLED SURROUNDING THE CRITICAL ROOT ZONE AND REMAIN IN PLACE UNTIL THE WORK IS COMPLETE.
 - DO NOT PLACE ANY MATERIAL OR EQUIPMENT INCLUDING OUTHOUSES
 - DO NOT ATTACH ANY SIGNS, NOTICES OR POSTERS TO ANY TREE.
 - DO NOT RAISE OR LOWER THE EXISTING GRADE.
 - TUNNEL OR BORE WHEN DIGGING.
 - DO NOT DAMAGE THE ROOT SYSTEM, TRUNK, OR BRANCHES OF ANY TREE.
 - ENSURE THAT EXHAUST FUMES FROM ALL EQUIPMENT ARE NOT DIRECTED TOWARD ANY TREE CANOPY.
 - DO NOT EXTEND HARD SURFACE OR SIGNIFICANTLY CHANGE LANDSCAPING.
- UNLESS PLANS ARE APPROVED BY CITY FORESTRY STAFF, FOR WORK WITHIN THE CRZ:
 - DO NOT RAISE OR LOWER THE EXISTING GRADE.
 - DO NOT DAMAGE THE ROOT SYSTEM, TRUNK, OR BRANCHES OF ANY TREE.
 - ENSURE THAT EXHAUST FUMES FROM ALL EQUIPMENT ARE NOT DIRECTED TOWARD ANY TREE CANOPY.
 - DO NOT EXTEND HARD SURFACE OR SIGNIFICANTLY CHANGE LANDSCAPING.
- TREE PROTECTION FENCING MUST BE AT LEAST 1.2m IN HEIGHT, AND BE CONSTRUCTED OF RIGID OR FRAMED MATERIALS (E.G. MODULOC, STEEL PLYWOOD HOARDING, OR BRUSH FENCE ON 2"x4" WOOD FRAME) WITH POSTS 2.4m APART, SUCH THAT THE FENCE LOCATION CANNOT BE ALTERED. ALL SUPPORTS AND BRACINGS MUST BE PLACED OUTSIDE OF THE CRZ, AND INSTALLATION MUST MINIMIZE DAMAGE TO EXISTING ROOTS. (SEE DETAIL)
- THE LOCATION OF THE TREE PROTECTION FENCING MUST BE DETERMINED BY AN ARBORIST AND DETAILED ON ANY ASSOCIATED PLANS FOR THE SITE (E.G. TREE CONSERVATION REPORT, TREE DISCLOSURE REPORT, ETC). THE PLAN AND CONSTRUCTED FENCING MUST BE APPROVED BY CITY FORESTRY STAFF PRIOR TO THE COMMENCEMENT OF WORK.
- IF THE FENCED TREE PROTECTION AREA MUST BE REDUCED TO FACILITATE CONSTRUCTION, MITIGATION MEASURES MUST BE PRESCRIBED BY AN ARBORIST AND APPROVED BY CITY FORESTRY STAFF. THESE MAY INCLUDE THE PLACEMENT OF PLYWOOD, WOOD CHIPS OR STEEL PLATING OVER THE ROOTS FOR PROTECTION OR THE PROPER PRUNING AND CARE OF ROOTS WHERE ENCOUNTERED.

BY-LAWS:

ALL CITY-OWNED TREES ARE PROTECTED UNDER THE MUNICIPAL TREES AND NATURAL AREAS PROTECTION BY-LAW (2006-279), WITHIN THE URBAN AREA.

PRIVATELY-OWNED TREES GREATER THAN 50cm IN DIAMETER ON LOTS 1 HECTARE IN SIZE OR LESS, AND TREES GREATER THAN 10cm IN DIAMETER ON LOTS GREATER THAN 1 HECTARE, ARE PROTECTED UNDER THE URBAN TREE CONSERVATION BY-LAW (2009-200).

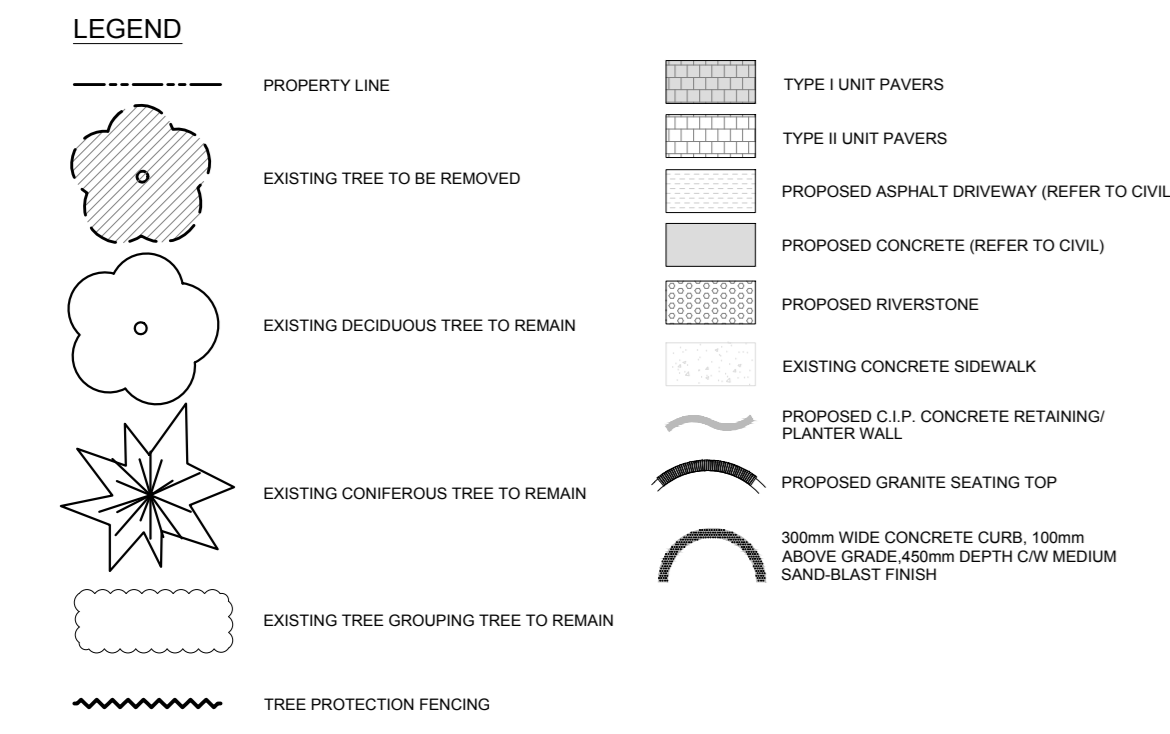
2 TREE PROTECTION FENCING
SCALE 1:20



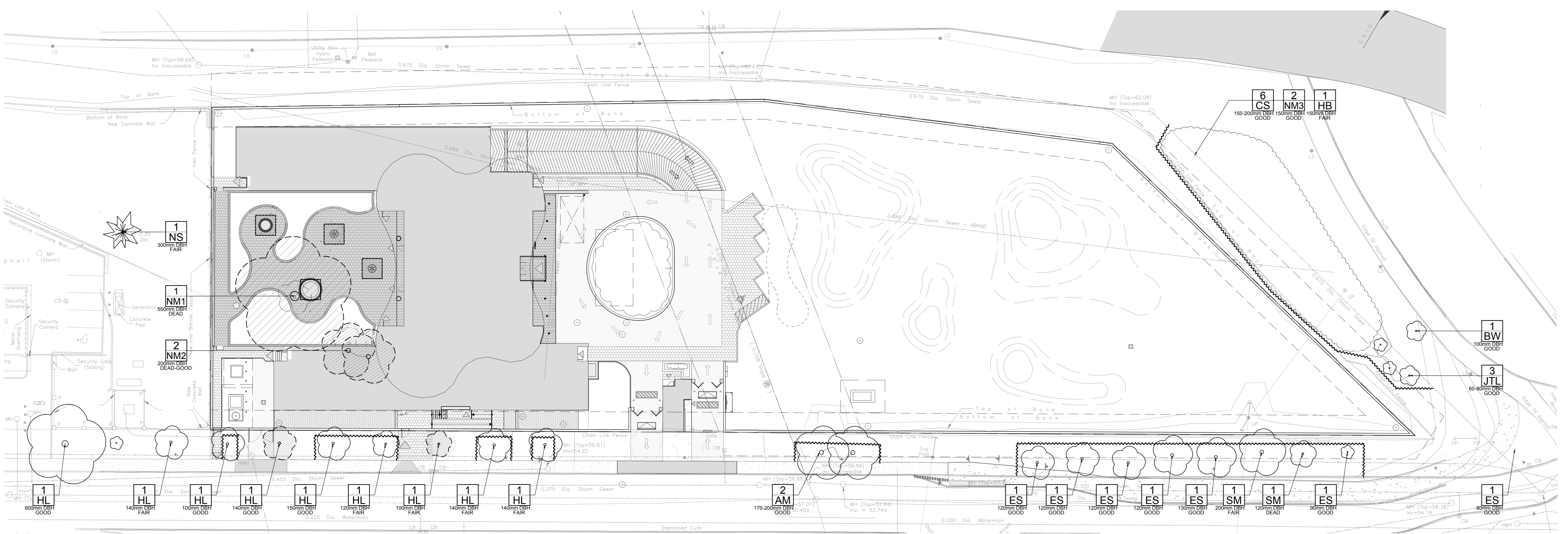
ARCHITECTS
grc architects
41 Clarence Street, Suite 401
Ottawa, Ontario K1N 9K1
t: 613-241-8203 f: 613-241-4180
info@grcarchitects.com www.grcarchitects.com

GENERAL NOTES

- IT IS THE RESPONSIBILITY OF THE APPROPRIATE CONTRACTOR OR OFFICIAL TO REPORT ANY ERRORS, OMISSIONS OR DISCREPANCIES ON THIS PLAN WITH ACTUAL SITE CONDITIONS TO THE LANDSCAPE ARCHITECT BEFORE PROCEEDING WITH CONSTRUCTION.
- THE CONTRACTOR IS TO NOTIFY ALL UTILITY COMPANIES AND AUTHORITIES PRIOR TO ANY EXCAVATION AND ASCERTAIN LOCATIONS OF UNDERGROUND SERVICES.
- THE CONTRACTOR IS TO REINSTATE ALL AREAS AND ITEMS DAMAGED AS A RESULT OF CONSTRUCTION ACTIVITY.
- THE CONTRACTOR IS TO COMPLY WITH ALL PERTINENT CODES AND BY-LAWS.
- THE CONTRACTOR IS TO MAINTAIN A POSITIVE SURFACE RUN-OFF THROUGHOUT THE ENTIRE CONSTRUCTION PERIOD.
- THE LANDSCAPE ARCHITECT IS NOT RESPONSIBLE FOR SUBSURFACE CONDITIONS.
- THE CONTRACTOR IS TO IDENTIFY ALL EXISTING TREES TO REMAIN ON SITE WITH THE LANDSCAPE ARCHITECT PRIOR TO CONSTRUCTION.
- THE CONTRACTOR IS TO STAKE THE PROPOSED LOCATION OF ALL PLANT MATERIAL IN CONJUNCTION WITH THE LANDSCAPE ARCHITECT PRIOR TO EXCAVATION.
- MINIMUM DISTANCES FOR SELECTED DECIDUOUS TREES ARE AS FOLLOWS:
 - BUILDING FOUNDATIONS 7.5M
 - SIDEWALKS 1.5M
 - PUBLIC STREETS 2.5M
 - UNDERGROUND INFRASTRUCTURE 2.0M
- ALL TREES WITHIN 1M OF UNDERGROUND UTILITY TRENCHES ARE TO BE EXCAVATED BY HAND.
- REMOVE ALL PROTECTIVE WRAPPING FROM TREE TRUNKS AFTER INSTALLATION.
- STAKING OF TREES SHALL ONLY BE PERFORMED IF NECESSARY.
- ENSURE THAT MULCH IS PULLED BACK A MIN. DISTANCE OF 75MM FROM BASE OF TREE TRUNK.



EXISTING TREE LIST		QTY	KEY				
KEY	QTY	BOTANICAL NAME	COMMON NAME	SIZE	CONDITION	REMARKS	OWNERSHIP
AM	2	Acer glabrate	Amur Maple	170-200mm DBH	GOOD	TO REMAIN	CITY OF OTTAWA (R.O.W. TREES)
BW	1	Juglans nigra	Black Walnut	100mm DBH	GOOD	TO REMAIN	CITY OF OTTAWA
CS	6	Picea pungens	Colorado Spruce	150-200mm DBH	GOOD	TO REMAIN	OUTSIDE PROPERTY LINE
ES	7	Ulmus ssp.	Elm Species	80-120mm DBH	FAIR-GOOD	TO REMAIN	CITY OF OTTAWA (R.O.W. TREES)
HB	1	Cedrus occidentalis	Honey Locust	100mm DBH	FAIR	TO REMAIN, LEAF GALL	CITY OF OTTAWA
HL	9	Cedrela odorata	Honey Locust	100-200mm DBH	FAIR-GOOD	7 TO REMAIN, 2 TO BE REMOVED	CITY OF OTTAWA (R.O.W. TREES)
JTL	3	Syringa reticulata	Japanese Tree Lilac	60-80mm DBH	GOOD	TO REMAIN	OUTSIDE PROPERTY LINE
NM1	1	Acer platanoides	Norway Maple	150-200mm DBH	DEAD	TO BE REMOVED	PRIVATE (PROJECT SITE - 187 BOTELER STREET)
NM2	2	Acer platanoides	Norway Maple	150-200mm DBH	DEAD-GOOD	TO BE REMOVED	PRIVATE (PROJECT SITE - 187 BOTELER STREET)
NM3	2	Acer platanoides	Norway Maple	150-200mm DBH	GOOD	TO REMAIN	CITY OF OTTAWA
NS	1	Picea abies	Norway Spruce	300mm DBH	FAIR	TO REMAIN	PRIVATE, 125 BOTELER STREET
SM	2	Acer saccharum	Sugar Maple	120-200mm DBH	DEAD-GOOD	TO REMAIN	CITY OF OTTAWA (R.O.W. TREES)



1 TREE CONSERVATION REPORT
SCALE 1:250

4	REISSUED FOR SITE PLAN CONTROL	08/26/22	SL	JL
3	ISSUED FOR BUILDING PERMIT	04/12/22	LC	JL
2	ISSUED FOR 99%	03/18/22	LC	JL
1	ISSUED FOR SITE PLAN CONTROL APPLICATION	03/01/22	LC	JL

JAMES B. LENNOX & ASSOCIATES INC.
LANDSCAPE ARCHITECTS
3332 CARLING AVENUE OTTAWA, ONTARIO K3H 3A8
Tel. (613) 722-5168 Fax. (866) 343-3942

PROJECT
QATAR NEW EMBASSY & CONSULATE
BOTELER STREET
OTTAWA, ON

DRAWING
TREE CONSERVATION REPORT

STAMP

SCALE

SEE PLAN

START DATE

JUNE, 2019

PROJECT NO.

20-GRC-2018

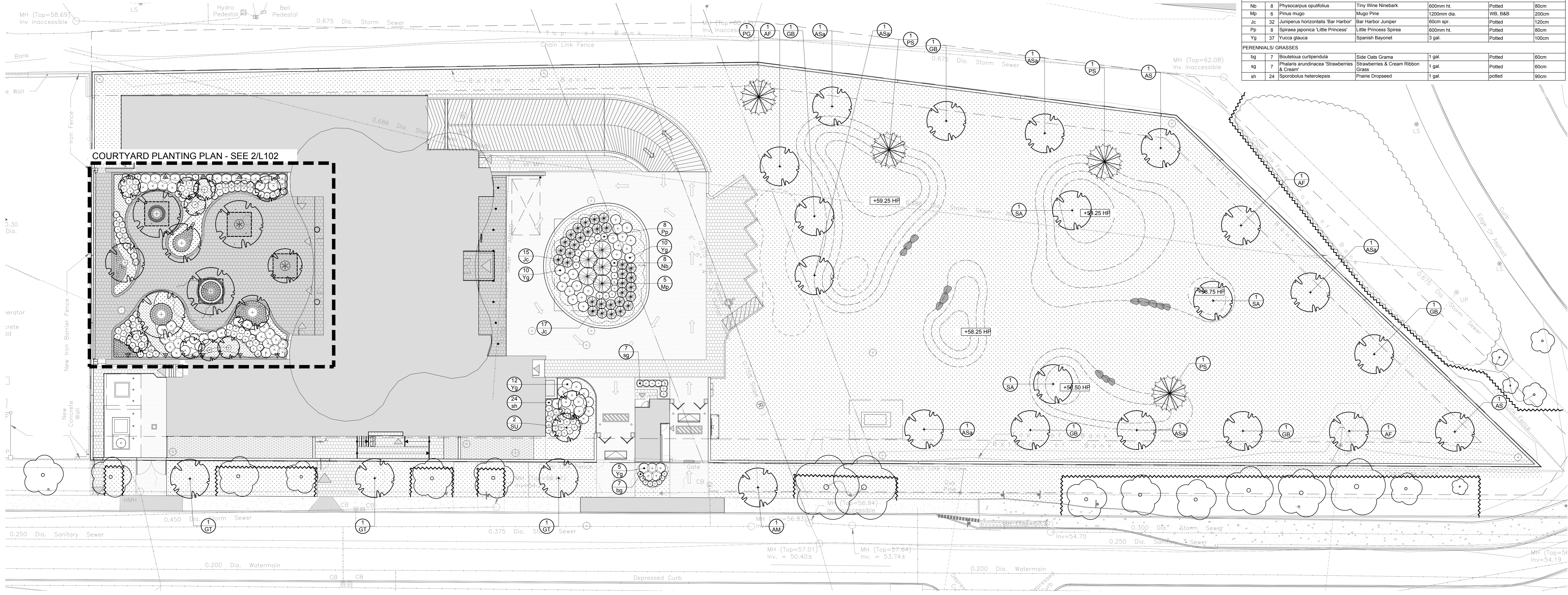
PROJECT NORTH

DRAWING NO.

TCR

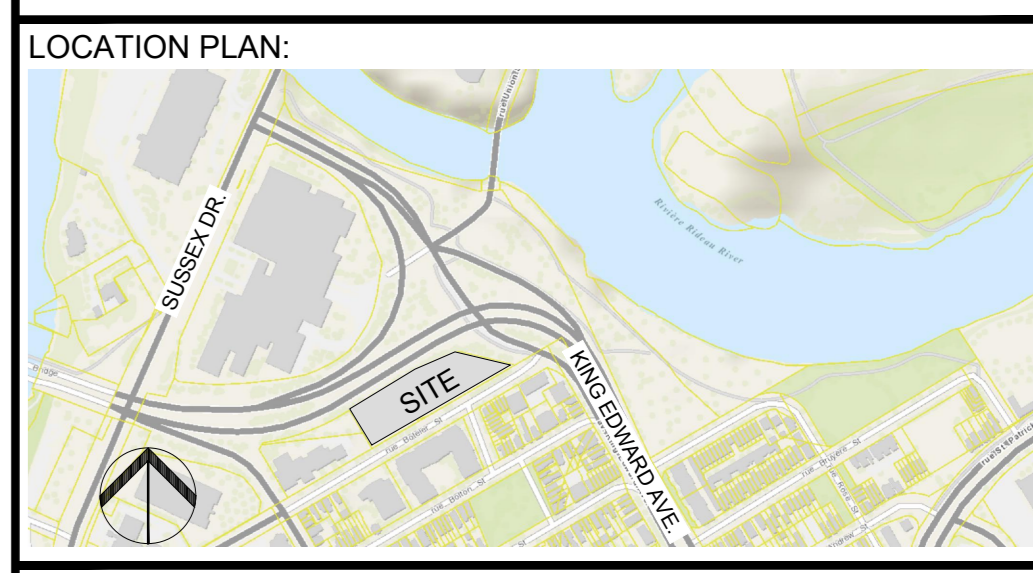
PLAN# 18699

LEGEND	
	PROPERTY LINE
	TYPE I UNIT PAVERS
	TYPE II UNIT PAVERS
	ASPHALT DRIVEWAY (REFER TO CIVIL)
	CONCRETE (REFER TO CIVIL)
	PROPOSED RIVERSTONE
	EXISTING CONCRETE SIDEWALK
	PROPOSED SOD
	C.I.P. CONCRETE RETAINING PLANTER WALL
	PROPOSED SEATING
	PROPOSED BERMS (0.25M INTERVAL)
	TREE PROTECTION FENCING
	EXISTING TREE GROUPING TO REMAIN
	STRUCTURAL SOIL (3000mm x 3000mm)
	300mm WIDE CONCRETE CURB, 100mm ABOVE GRADE, 400mm DEPTH CW MEDIUM SAND-BLAST FINISH
	EXISTING TREE TO REMAIN
	DECIDUOUS TREE
	CONIFEROUS TREE
	SHRUB & PERENNIAL PLANTING
	PERENNIAL/GROUNDCOVER PLANTING



1 PLANTING PLAN
SCALE 1:200

KEY	QTY	BOTANICAL NAME	COMMON NAME	SIZE	CONDITION	SPACING
PROPOSED PLANT LIST						
CONIFEROUS TREES						
PG	1	<i>Picea glauca</i>	White Spruce	250cm	WB	n/a
PS	3	<i>Pinus strobus</i>	Scots Pine	200cm	WB	n/a
DECIDUOUS TREES (LARGE)						
AF	3	<i>Acer freemanii</i> 'Autumn Blaze'	Autumn Blaze Maple	60mm dia.	WB, B&B	n/a
AM	1	<i>Acer ginnala</i>	Amur Maple	60mm dia.	WB, B&B	n/a
AS	2	<i>Acer saccharum</i>	Sugar Maple	60mm dia.	WB, B&B	n/a
ASa	6	<i>Acer saccharinum</i>	Silver Maple	60mm dia.	WB, B&B	n/a
GB	5	<i>Quercus bicolor</i>	Masthead Tree	60mm dia.	WB, B&B	n/a
GT	3	<i>Cotinus fracilis</i> var. <i>inermis</i>	Street Keeper Honeylocust	60mm dia.	WB, B&B	n/a
SA	3	<i>Salix alba</i> 'Trista'	Weeping Golden Willow	60mm dia.	WB, B&B	n/a
DECIDUOUS TREES (SMALL)						
SU	2	<i>Rhus typhina</i>	Staghorn Sumac	2000mm	WB, B&B, Specimen	n/a
SHRUBS						
Nb	8	<i>Physocarpus opulifolius</i>	Tiny Wine Ninebark	600mm ht.	Potted	80cm
Mp	6	<i>Pinus mugo</i>	Mugo Pine	1200mm dia.	WB, B&B	200cm
Jc	32	<i>Juniperus horizontalis</i> 'Bar Harbor'	Bar Harbor Juniper	60cm spr.	Potted	120cm
Pp	8	<i>Spiraea japonica</i> 'Little Princess'	Little Princess Spirea	600mm ht.	Potted	80cm
Yg	57	<i>Yucca glauca</i>	Spanish Bayonet	3 gal.	Potted	190cm
PERENNIALS/ GRASSES						
lg	7	<i>Bouteloua curtipendula</i>	Side Oats Grama	1 gal.	Potted	60cm
sg	7	<i>Phalaris arundinacea</i> 'Strawberries & Cream'	Strawberries & Cream Ribbon Grass	1 gal.	Potted	60cm
sh	24	<i>Sporobolus heterolepis</i>	Prairie Dropseed	1 gal.	Potted	90cm



ARCITECTS
grc architects
47 Clarence Street, Suite 401
Ottawa, Ontario K1N 9K1
t: 613-241-8203 f: 613-241-4180
info@grcarchitects.com www.grcarchitects.com

- GENERAL NOTES**
- IT IS THE RESPONSIBILITY OF THE APPROPRIATE CONTRACTOR OR OFFICIAL TO REPORT ANY ERRORS, OMISSIONS OR DISCREPANCIES ON THIS PLAN WITH ACTUAL SITE CONDITIONS TO THE LANDSCAPE ARCHITECT BEFORE PROCEEDING WITH CONSTRUCTION.
 - THE CONTRACTOR IS TO NOTIFY ALL UTILITY COMPANIES AND AUTHORITIES PRIOR TO ANY EXCAVATION AND ASCERTAIN LOCATIONS OF UNDERGROUND SERVICES.
 - THE CONTRACTOR IS TO REINSTATE ALL AREAS AND ITEMS DAMAGED AS A RESULT OF CONSTRUCTION ACTIVITY.
 - THE CONTRACTOR IS TO COMPLY WITH ALL PERTINENT CODES AND BY-LAWS.
 - THE CONTRACTOR IS TO MAINTAIN A POSITIVE SURFACE RUN-OFF THROUGHOUT THE ENTIRE CONSTRUCTION PERIOD.
 - THE LANDSCAPE ARCHITECT IS NOT RESPONSIBLE FOR SUBSURFACE CONDITIONS.
 - THE CONTRACTOR IS TO IDENTIFY ALL EXISTING TREES TO REMAIN ON SITE WITH THE LANDSCAPE ARCHITECT PRIOR TO CONSTRUCTION.
 - THE CONTRACTOR IS TO STAKE THE PROPOSED LOCATION OF ALL PLANT MATERIAL IN CONJUNCTION WITH THE LANDSCAPE ARCHITECT PRIOR TO EXCAVATION.
 - MINIMUM DISTANCES FOR SELECTED DECIDUOUS TREES ARE AS FOLLOWS:
- BUILDING FOUNDATIONS 7.5M
- SIDEWALKS 1.5M
- PUBLIC STREETS 2.5M
- UNDERGROUND INFRASTRUCTURE 2.0M
 - ALL TREES WITHIN 1M OF UNDERGROUND UTILITY TRENCHES ARE TO BE EXCAVATED BY HAND.
 - REMOVE ALL PROTECTIVE WRAPPING FROM TREE TRUNKS AFTER INSTALLATION.
 - STAKING OF TREES SHALL ONLY BE PERFORMED IF NECESSARY.
 - ENSURE THAT MULCH IS PULLED BACK A MIN. DISTANCE OF 75MM FROM BASE OF TREE TRUNK.

No.	Issue	Date	DR	CK
4	REISSUED FOR SITE PLAN CONTROL	08/26/22	SL	JL
3	ISSUED FOR BUILDING PERMIT	04/12/22	LC	JL
2	ISSUED FOR 99%	03/18/22	LC	JL
1	ISSUED FOR SITE PLAN CONTROL APPLICATION	03/01/22	LC	JL

JAMES B. LENNOX & ASSOCIATES INC.
LANDSCAPE ARCHITECTS
332 CARRING AVENUE OTTAWA, ONTARIO K2H 3A8
Tel: (613) 722-5168 Fax: (866) 343-3942

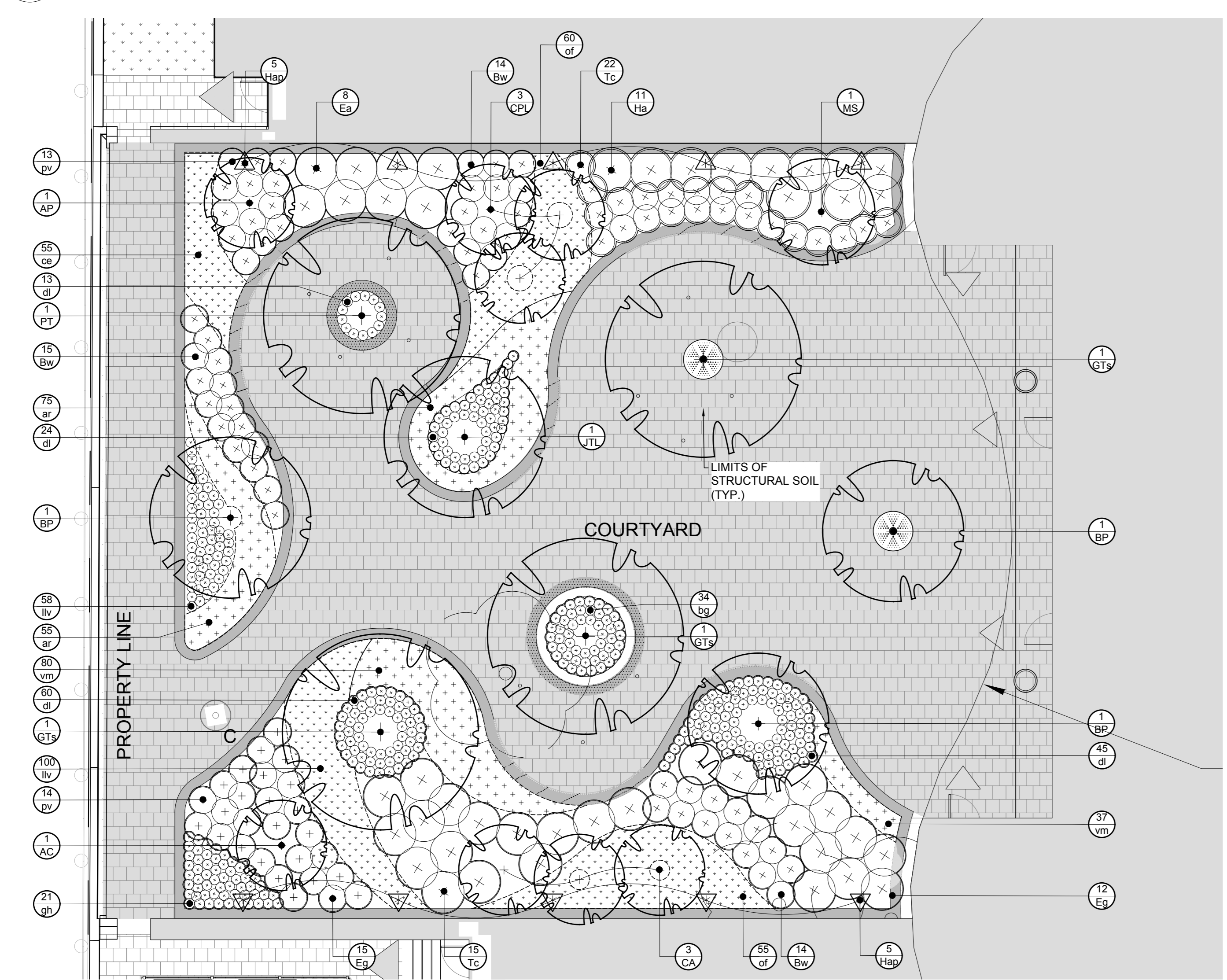
PROJECT
QATAR NEW EMBASSY & CONSULATE
BOTELER STREET
OTTAWA, ON

DRAWING
LANDSCAPE PLAN

STAMP	SCALE
	SEE PLAN
	START DATE
	JUNE, 2019
	PROJECT NO.
	20-GR-2018

PROJECT NORTH

DRAWING NO.
L102
PLOT SIZE A.0



LEGEND	
	TYPE I UNIT PAVERS
	TYPE II UNIT PAVERS
	C.I.P. CONCRETE RETAINING PLANTER WALL
	TREE GRATE
	PROPOSED LARGE DECIDUOUS TREE 60mm Ø CALIPER
	PROPOSED SMALL DECIDUOUS TREE 15 GALLON POT
	SHRUB & PERENNIAL PLANTING
	PERENNIAL/GROUNDCOVER PLANTING
	LANDSCAPE CATCH BASIN (REFER TO CIVIL)
	300mm WIDE CONCRETE CURB, 100mm ABOVE GRADE, 400mm DEPTH CW MEDIUM SAND-BLAST FINISH

KEY	QTY	BOTANICAL NAME	COMMON NAME	SIZE	CONDITION	SPACING
PROPOSED PLANT LIST - COURTYARD						
DECIDUOUS TREES (LARGE)						
BP	3	<i>Betula populifolia</i>	Gray Birch	50mm dia.	Clump, WB, Specimen	n/a
GTS	3	<i>Cotinus fracilis</i> var. <i>inermis</i>	Shademaster Honeylocust	60mm dia.	WB, B&B, Specimen	n/a
PT	1	<i>Populus alba</i>	White Poplar	60mm dia.	WB, Specimen	n/a
DECIDUOUS TREES (SMALL)						
AC	17	<i>Acer palmatum</i> 'Bloodgood'	Bloodgood Japanese Maple	200mm ht.	WB, B&B, Treatform	n/a
AP	1	<i>Acer palmatum</i> 'Bloodgood'	Bloodgood Japanese Maple	200mm ht.	B&B, Specimen	n/a
CA	3	<i>Cornus alternifolia</i>	Pagoda Dogwood	175cm ht., 10 gal.	Potted, Treatform	n/a
CPL	3	<i>Syringa vulgaris</i> 'Katherine Havemeyer'	Katherine Havemeyer Lilac	200cm ht.	WB, B&B	n/a
JTL	1	<i>Syringa reticulata</i>	Japanese Tree Lilac	200cm ht.	WB, B&B	n/a
MS	1	<i>Magnolia stellata</i> 'Royal Star'	Royal Star Magnolia	200cm ht.	B&B, Specimen	n/a
SHRUBS						
Bw	43	<i>Buxus</i> 'Green Velvet'	Green Velvet Boxwood	3 gal.	Potted	80cm
Ea	8	<i>Eurotymus alatus</i> 'Compactus'	Dwarf Burning Bush	60cm ht.	p	100cm
EG	27	<i>Eurotymus alatus</i> 'Silvermist Candy'	Wintercreeper	3 gal.	Potted	80cm
Ha	11	<i>Hydrangea arborescens</i> 'Annabelle'	Annabelle Hydrangea	50cm ht., 7 gal.	Potted	120cm
Tc	57	<i>Taxus cuspidata</i> 'Nana'	Dwarf Japanese Yew	50cm spr.	B&B	90cm
PERENNIALS/ GRASSES						
lg	34	<i>Bouteloua gracilis</i> 'Blonde Ambition'	Blonde Ambition Grama Grass	1 gal.	Potted	30cm
ce	55	<i>Carex eburnea</i>	Bristle Leaf Sedge	1 gal.	Potted	20cm
dl	142	<i>Hemerocallis</i> 'Stella D'Oro'	Stella D'Oro Day Lily	2 gal.	Potted	50cm
gn	21	<i>Hosta</i> 'Guacamole'	Guacamole Hosta	1 gal.	Potted	60cm
lv	158	<i>Convallaria majalis</i>	Lily-of-the-valley	1 gal.	Potted	40cm
pv	27	<i>Panicum virgatum</i> 'Shenandoah'	Shenandoah Switch Grass	1 gal.	Potted	90cm
of	115	<i>Matteuccia struthiopteris</i>	Ostrich Fern	2 gal.	Potted	50cm
GROUND COVER						
ar	130	<i>Asperula repens</i>	Bugleweed	1 gal.	Potted	40cm
vm	117	<i>Vinca minor</i>	Periwinkle	18cm	pan	40cm
VINES						
Hap	10	<i>Hydrangea anomala</i> petiolaris	Climbing Hydrangea	15 gal.	Potted, Staked	n/a

2 COURTYARD PLANTING PLAN
SCALE 1:100