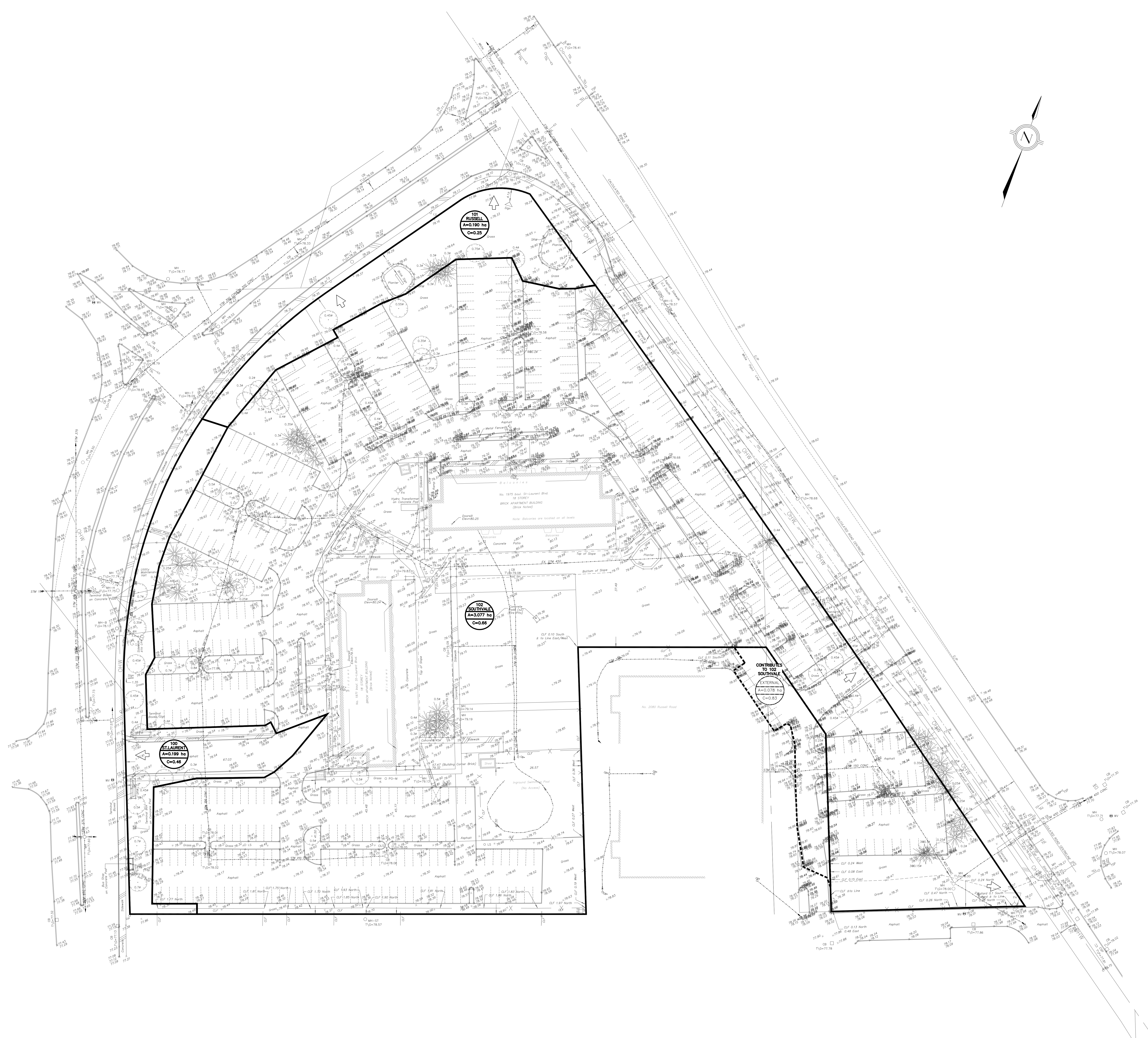


**LEGEND**

- EXISTING STORM SEWER
- TRIBUTARY NAME  
AREA (Ha)  
DRAINAGE COEFFICIENT
- PROPERTY LINE
- EXISTING DRAINAGE BOUNDARY
- EXISTING EXTERNAL DRAINAGE BOUNDARY
- EXISTING OVERLAND FLOW ROUTE



**LEGAL & TOPOGRAPHY**  
 PROVIDED BY: ANNE'S STUDIO, VOLLERSBACH LTD.  
 14 CONCORSE GATE, SUITE 500  
 MAPLETON, ONTARIO, CANADA L6L 1S6  
 PHONE: (613) 727-0850

**BENCHMARK**  
 NOTE: BEARINGS ARE ASTROMONIC, DERIVED FROM THE EASTERLY LIMIT OF ST. LAURENT BOULEVARD, SHOWN TO BE N01°12'57"W

**ELEVATION NOTE**  
 NOTES: ELEVATIONS SHOWN ARE GEODETIC AND ARE REFERRED TO THE CGVD28 GEODETIC DATUM.

No.	ISSUED FOR SITE PLAN APPLICATION APPROVAL #1	DATE	BY	CITY
01	ISSUED FOR SITE PLAN APPLICATION APPROVAL #1	MAR-11-2022	J.Y.	TORONTO

**counterpoint ENGINEERING**

COUNTERPOINT ENGINEERING INC.  
 8395 Ave St. Suite 100, Vaughan, ON L4K 5G2 Phone: 905-306-1104 Fax: 905-306-1405

**ENGINEER'S STAMP**  
 S. YOGANATHAN  
 101005046  
 PROFESSIONAL ENGINEER  
 PROVINCE OF ONTARIO

**APPLICANT:**  
 STARLIGHT DEVELOPMENTS INC.  
 3280 BLOOR STREET WEST, CENTRE TOWER - UNIT# 1400  
 TORONTO, ONTARIO M8X 2X3  
 PHONE: (416) 234-8444  
 FAX: (416) 855-0192  
 CONTACT: MATTHEW CELLUCCI

**SITE LOCATION:**  
 PROPOSED RESIDENTIAL DEVELOPMENT  
 MULTI-UNIT RESIDENTIAL TOWER DEVELOPMENT  
 1971 & 1975 ST. LAURENT BLVD., OTTAWA  
 SITE PLAN FILE No.:

**PRE-DEVELOPMENT STORM DRAINAGE PLAN**

DESIGNED BY: G.D.	CHECKED BY: J.Y.	DATE: MAR 11, 2022
DRAWING BY: G.D.	CHECKED BY: J.Y.	PROJECT: 21106
SCALE: 1:400m	DRAWING NO. SW-SWM1	