

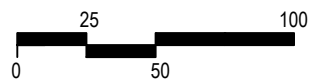
LEGEND

- - - PROPERTY LINE
- PROPOSED SHADOW LINE EXTENT
- AS OF RIGHT SHADOW LINE EXTENT
- - - AS OF RIGHT BUILDING ENVELOPE
- PROPOSED DEVELOPMENT
- APPROVED DEVELOPMENT
- NET SHADOW ON GRADE *

* PROPOSED MAXIMUM BUILDING HEIGHT = 54.0m (AS OF RIGHT)
 ADDITIONAL 6.27m (MECH. PENTHOUSE) PERMITTED PROJECTION ABOVE MAIN ROOF = 60.27m

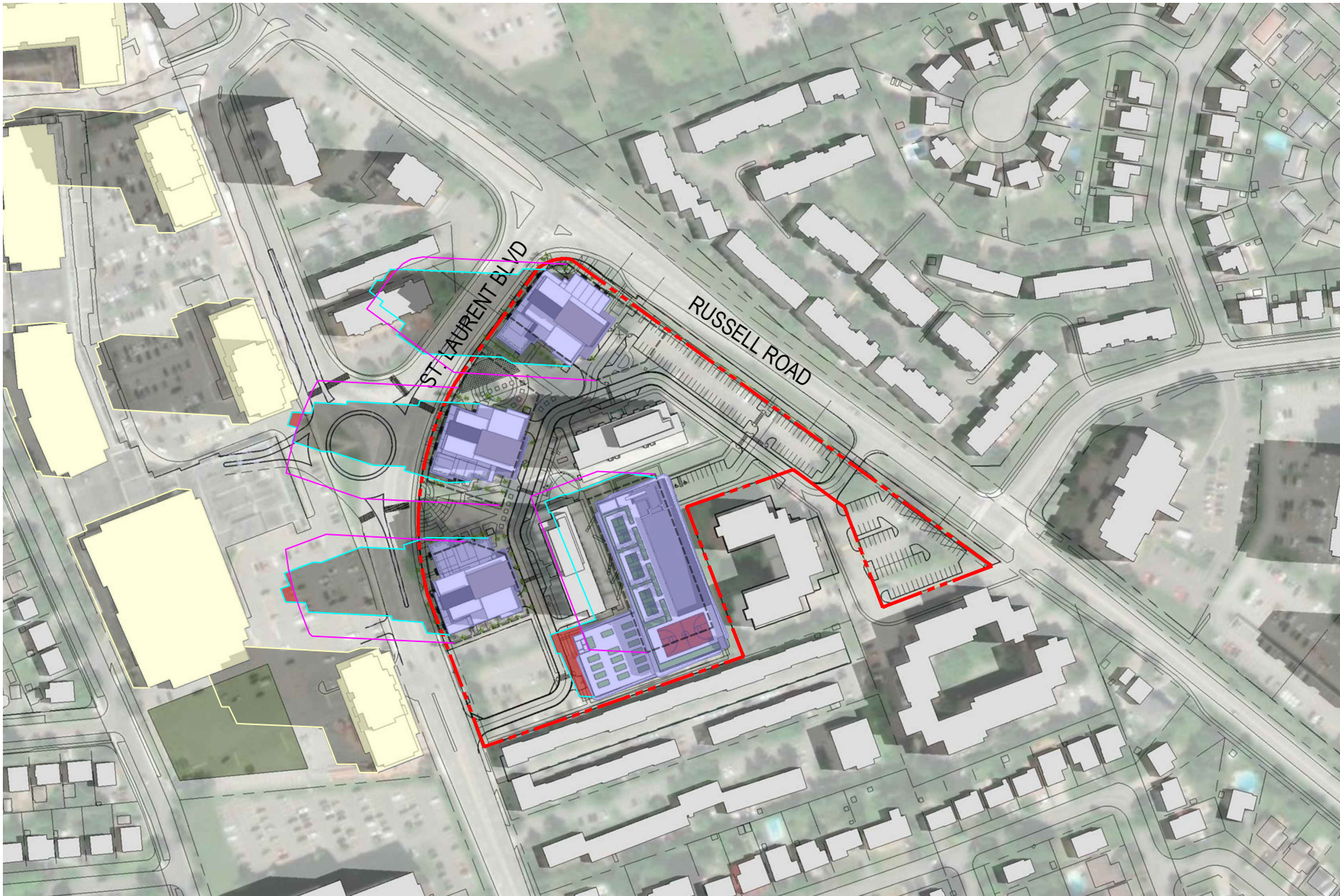
🕒 45.3990° N
 75.6238° W

JUNE 21 - 8AM EDT
 SUN SHADOW STUDY
 PROPOSED MULTI-FAMILY RESIDENTIAL DEVELOPMENT
 1971 & 1975 ST. LAURENT BLVD, OTTAWA, ON
 FOR: STARLIGHT DEVELOPMENTS



PETROFF

PETROFF PARTNERSHIP ARCHITECTS



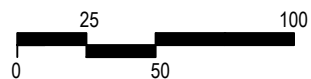
LEGEND

- - - PROPERTY LINE
- PROPOSED SHADOW LINE EXTENT
- AS OF RIGHT SHADOW LINE EXTENT
- AS OF RIGHT BUILDING ENVELOPE
- PROPOSED DEVELOPMENT
- APPROVED DEVELOPMENT
- NET SHADOW ON GRADE *

* PROPOSED MAXIMUM BUILDING HEIGHT = 54.0m (AS OF RIGHT)
 ADDITIONAL 6.27m (MECH PENTHOUSE) PERMITTED PROJECTION ABOVE MAIN ROOF = 60.27m

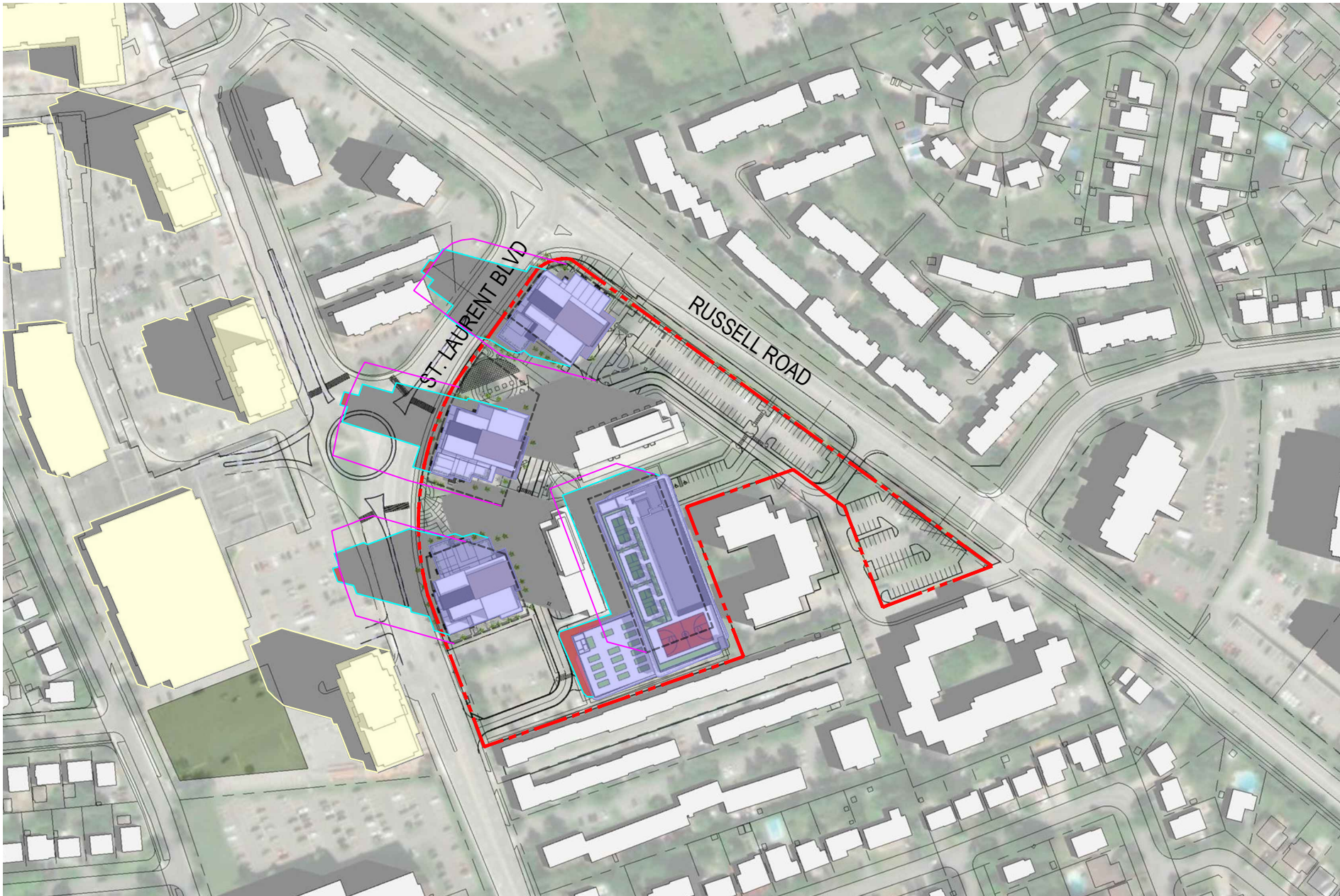
🕒 45.3990° N
 75.6238° W

JUNE 21 - 9AM EDT
 SUN SHADOW STUDY
 PROPOSED MULTI-FAMILY RESIDENTIAL DEVELOPMENT
 1971 & 1975 ST. LAURENT BLVD, OTTAWA, ON
 FOR: STARLIGHT DEVELOPMENTS



PETROFF

PETROFF PARTNERSHIP ARCHITECTS



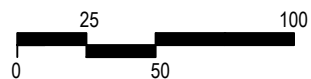
LEGEND

- - - PROPERTY LINE
- PROPOSED SHADOW LINE EXTENT
- AS OF RIGHT SHADOW LINE EXTENT
- AS OF RIGHT BUILDING ENVELOPE
- PROPOSED DEVELOPMENT
- APPROVED DEVELOPMENT
- NET SHADOW ON GRADE *

* PROPOSED MAXIMUM BUILDING HEIGHT = 54.0m (AS OF RIGHT)
 ADDITIONAL 6.27m (MECH PENTHOUSE) PERMITTED PROJECTION ABOVE MAIN ROOF = 60.27m

🕒 45.3990° N
 75.6238° W

JUNE 21 - 10AM EDT
 SUN SHADOW STUDY
 PROPOSED MULTI-FAMILY RESIDENTIAL DEVELOPMENT
 1971 & 1975 ST. LAURENT BLVD, OTTAWA, ON
 FOR: STARLIGHT DEVELOPMENTS



PETROFF

PETROFF PARTNERSHIP ARCHITECTS



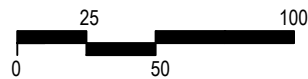
LEGEND

- - - PROPERTY LINE
- PROPOSED SHADOW LINE EXTENT
- AS OF RIGHT SHADOW LINE EXTENT
- AS OF RIGHT BUILDING ENVELOPE
- PROPOSED DEVELOPMENT
- APPROVED DEVELOPMENT
- NET SHADOW ON GRADE *

* PROPOSED MAXIMUM BUILDING HEIGHT = 54.0m (AS OF RIGHT)
 ADDITIONAL 6.27m (MECH PENTHOUSE) PERMITTED PROJECTION ABOVE MAIN ROOF = 60.27m

🕒 45.3990° N
 75.6238° W

JUNE 21 - 11AM EDT
 SUN SHADOW STUDY
 PROPOSED MULTI-FAMILY RESIDENTIAL DEVELOPMENT
 1971 & 1975 ST. LAURENT BLVD, OTTAWA, ON
 FOR: STARLIGHT DEVELOPMENTS



PETROFF

PETROFF PARTNERSHIP ARCHITECTS



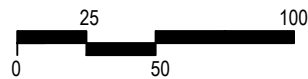
LEGEND

- - - PROPERTY LINE
- PROPOSED SHADOW LINE EXTENT
- AS OF RIGHT SHADOW LINE EXTENT
- AS OF RIGHT BUILDING ENVELOPE
- PROPOSED DEVELOPMENT
- APPROVED DEVELOPMENT
- NET SHADOW ON GRADE *

* PROPOSED MAXIMUM BUILDING HEIGHT = 54.0m (AS OF RIGHT)
 ADDITIONAL 6.27m (MECH PENTHOUSE) PERMITTED PROJECTION ABOVE MAIN ROOF = 60.27m

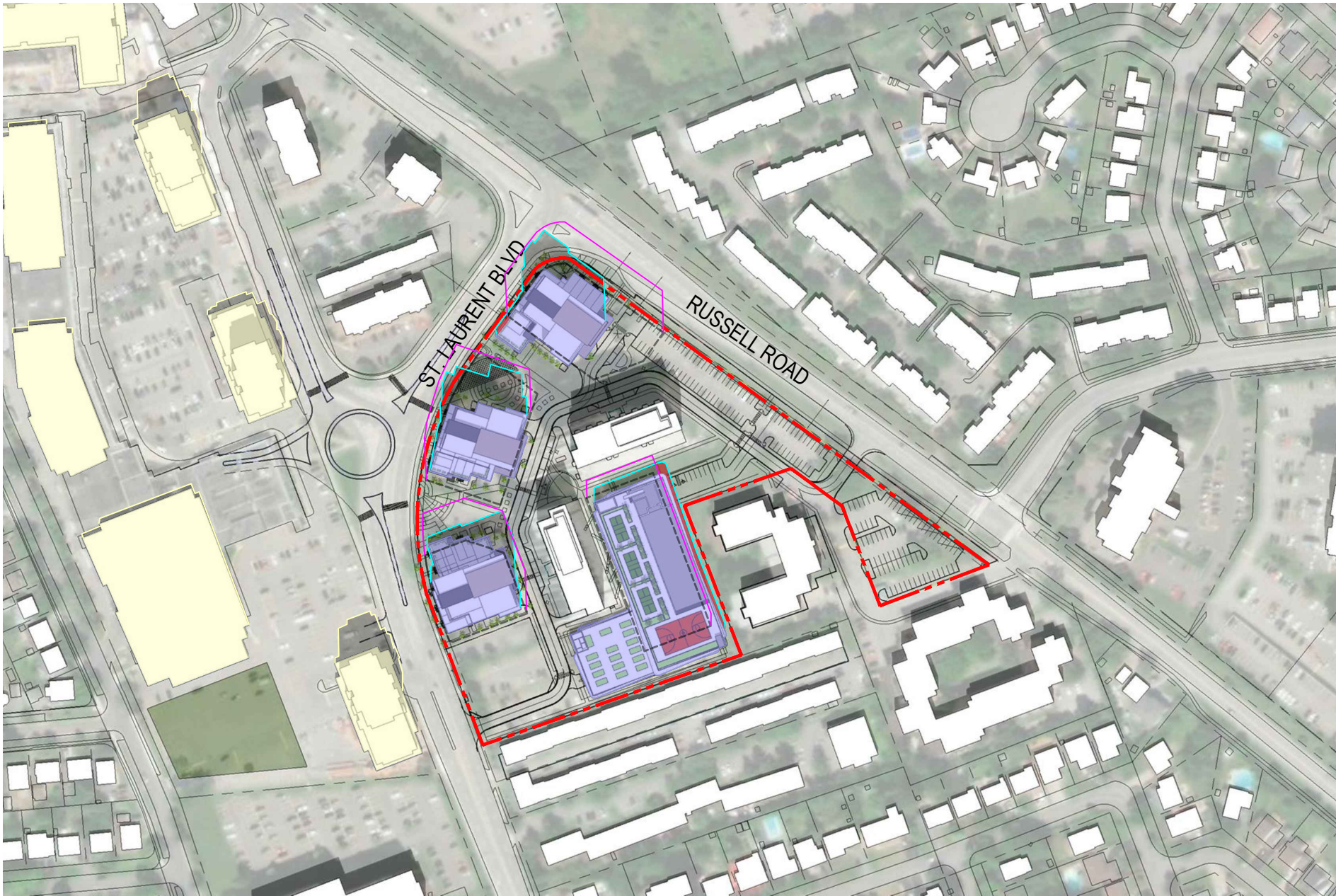
🕒 45.3990° N
 75.6238° W

JUNE 21 - 12PM EDT
 SUN SHADOW STUDY
 PROPOSED MULTI-FAMILY RESIDENTIAL DEVELOPMENT
 1971 & 1975 ST. LAURENT BLVD, OTTAWA, ON
 FOR: STARLIGHT DEVELOPMENTS



PETROFF

PETROFF PARTNERSHIP ARCHITECTS



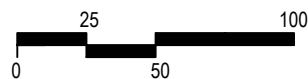
LEGEND

- - - PROPERTY LINE
- PROPOSED SHADOW LINE EXTENT
- AS OF RIGHT SHADOW LINE EXTENT
- AS OF RIGHT BUILDING ENVELOPE
- PROPOSED DEVELOPMENT
- APPROVED DEVELOPMENT
- NET SHADOW ON GRADE *

* PROPOSED MAXIMUM BUILDING HEIGHT = 54.0m (AS OF RIGHT)
 ADDITIONAL 6.27m (MECH PENTHOUSE) PERMITTED PROJECTION ABOVE MAIN ROOF = 60.27m

🕒 45.3990° N
 75.6238° W

JUNE 21 - 1PM EDT
 SUN SHADOW STUDY
 PROPOSED MULTI-FAMILY RESIDENTIAL DEVELOPMENT
 1971 & 1975 ST. LAURENT BLVD, OTTAWA, ON
 FOR: STARLIGHT DEVELOPMENTS



PETROFF

PETROFF PARTNERSHIP ARCHITECTS



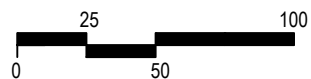
LEGEND

- - - PROPERTY LINE
- PROPOSED SHADOW LINE EXTENT
- AS OF RIGHT SHADOW LINE EXTENT
- AS OF RIGHT BUILDING ENVELOPE
- PROPOSED DEVELOPMENT
- APPROVED DEVELOPMENT
- NET SHADOW ON GRADE *

* PROPOSED MAXIMUM BUILDING HEIGHT = 54.0m (AS OF RIGHT)
 ADDITIONAL 6.27m (MECH PENTHOUSE) PERMITTED PROJECTION ABOVE MAIN ROOF = 60.27m

🕒 45.3990° N
 75.6238° W

JUNE 21 - 2PM EDT
 SUN SHADOW STUDY
 PROPOSED MULTI-FAMILY RESIDENTIAL DEVELOPMENT
 1971 & 1975 ST. LAURENT BLVD, OTTAWA, ON
 FOR: STARLIGHT DEVELOPMENTS



PETROFF

PETROFF PARTNERSHIP ARCHITECTS



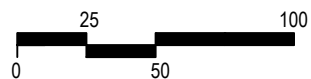
LEGEND

- - - PROPERTY LINE
- PROPOSED SHADOW LINE EXTENT
- AS OF RIGHT SHADOW LINE EXTENT
- AS OF RIGHT BUILDING ENVELOPE
- PROPOSED DEVELOPMENT
- APPROVED DEVELOPMENT
- NET SHADOW ON GRADE *

* PROPOSED MAXIMUM BUILDING HEIGHT = 54.0m (AS OF RIGHT)
 ADDITIONAL 6.27m (MECH PENTHOUSE) PERMITTED PROJECTION ABOVE MAIN ROOF = 60.27m

🕒 45.3990° N
 75.6238° W

JUNE 21 - 3PM EDT
 SUN SHADOW STUDY
 PROPOSED MULTI-FAMILY RESIDENTIAL DEVELOPMENT
 1971 & 1975 ST. LAURENT BLVD, OTTAWA, ON
 FOR: STARLIGHT DEVELOPMENTS



PETROFF

PETROFF PARTNERSHIP ARCHITECTS



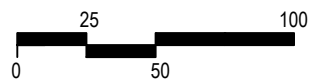
LEGEND

- - - PROPERTY LINE
- PROPOSED SHADOW LINE EXTENT
- AS OF RIGHT SHADOW LINE EXTENT
- AS OF RIGHT BUILDING ENVELOPE
- PROPOSED DEVELOPMENT
- APPROVED DEVELOPMENT
- NET SHADOW ON GRADE *

* PROPOSED MAXIMUM BUILDING HEIGHT = 54.0m (AS OF RIGHT)
 ADDITIONAL 6.27m (MECH PENTHOUSE) PERMITTED PROJECTION ABOVE MAIN ROOF = 60.27m

🕒 45.3990° N
 75.6238° W

JUNE 21 - 4PM EDT
 SUN SHADOW STUDY
 PROPOSED MULTI-FAMILY RESIDENTIAL DEVELOPMENT
 1971 & 1975 ST. LAURENT BLVD, OTTAWA, ON
 FOR: STARLIGHT DEVELOPMENTS



PETROFF

PETROFF PARTNERSHIP ARCHITECTS



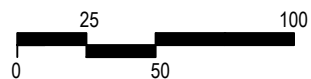
LEGEND

- - - PROPERTY LINE
- PROPOSED SHADOW LINE EXTENT
- AS OF RIGHT SHADOW LINE EXTENT
- AS OF RIGHT BUILDING ENVELOPE
- PROPOSED DEVELOPMENT
- APPROVED DEVELOPMENT
- NET SHADOW ON GRADE *

* PROPOSED MAXIMUM BUILDING HEIGHT = 54.0m (AS OF RIGHT)
 ADDITIONAL 6.27m (MECH PENTHOUSE) PERMITTED PROJECTION ABOVE MAIN ROOF = 60.27m

🕒 45.3990° N
 75.6238° W

JUNE 21 - 5PM EDT
 SUN SHADOW STUDY
 PROPOSED MULTI-FAMILY RESIDENTIAL DEVELOPMENT
 1971 & 1975 ST. LAURENT BLVD, OTTAWA, ON
 FOR: STARLIGHT DEVELOPMENTS



PETROFF

PETROFF PARTNERSHIP ARCHITECTS



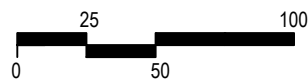
LEGEND

- - - PROPERTY LINE
- PROPOSED SHADOW LINE EXTENT
- AS OF RIGHT SHADOW LINE EXTENT
- AS OF RIGHT BUILDING ENVELOPE
- PROPOSED DEVELOPMENT
- APPROVED DEVELOPMENT
- NET SHADOW ON GRADE *

* PROPOSED MAXIMUM BUILDING HEIGHT = 54.0m (AS OF RIGHT)
 ADDITIONAL 6.27m (MECH PENTHOUSE) PERMITTED PROJECTION ABOVE MAIN ROOF = 60.27m

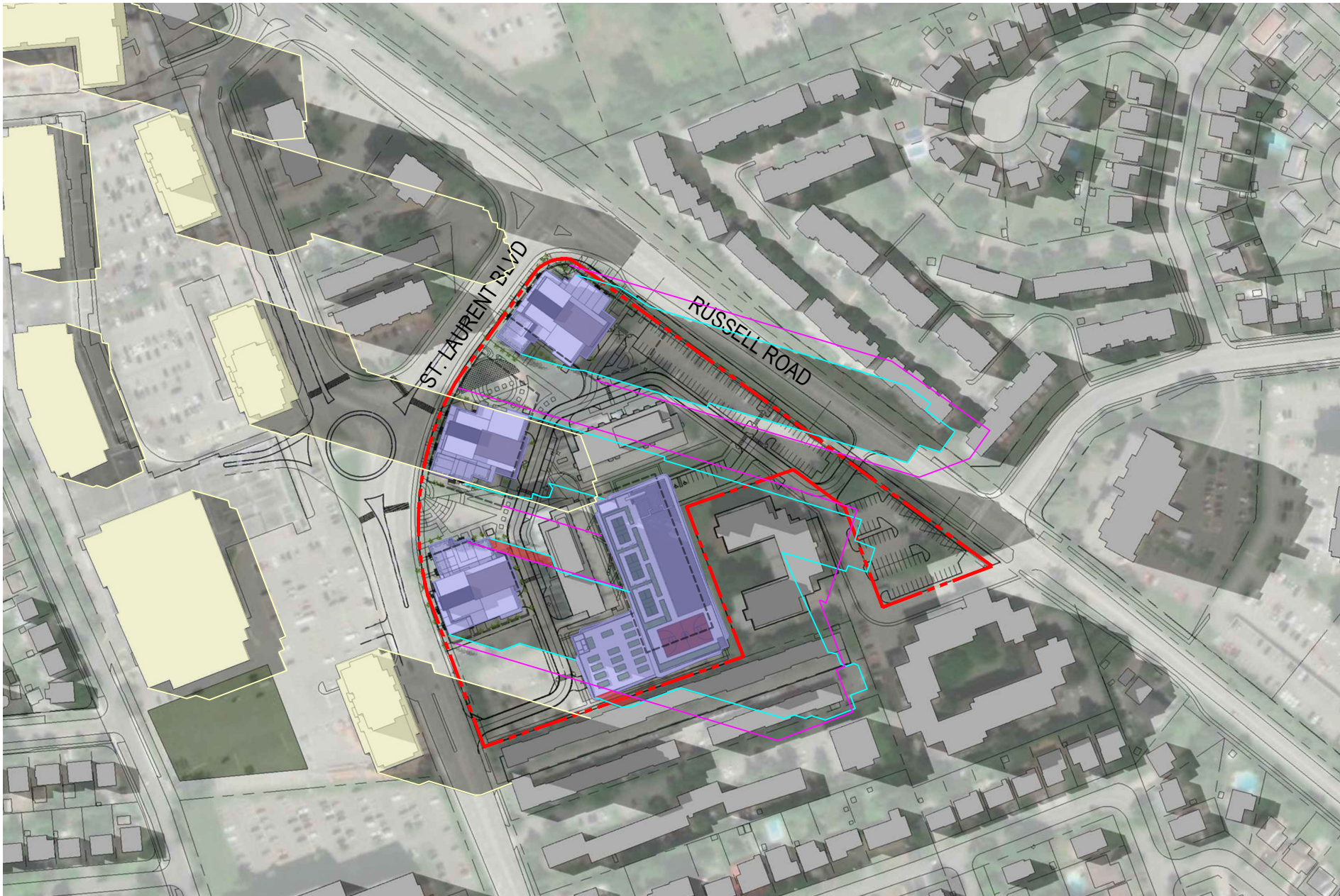
🕒 45.3990° N
 75.6238° W

JUNE 21 - 6PM EDT
 SUN SHADOW STUDY
 PROPOSED MULTI-FAMILY RESIDENTIAL DEVELOPMENT
 1971 & 1975 ST. LAURENT BLVD, OTTAWA, ON
 FOR: STARLIGHT DEVELOPMENTS



PETROFF

PETROFF PARTNERSHIP ARCHITECTS



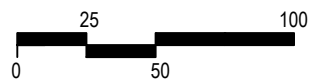
LEGEND

- - - PROPERTY LINE
- PROPOSED SHADOW LINE EXTENT
- AS OF RIGHT SHADOW LINE EXTENT
- AS OF RIGHT BUILDING ENVELOPE
- PROPOSED DEVELOPMENT
- APPROVED DEVELOPMENT
- NET SHADOW ON GRADE *

* PROPOSED MAXIMUM BUILDING HEIGHT = 54.0m (AS OF RIGHT)
 ADDITIONAL 6.27m (MECH PENTHOUSE) PERMITTED PROJECTION ABOVE MAIN ROOF = 60.27m

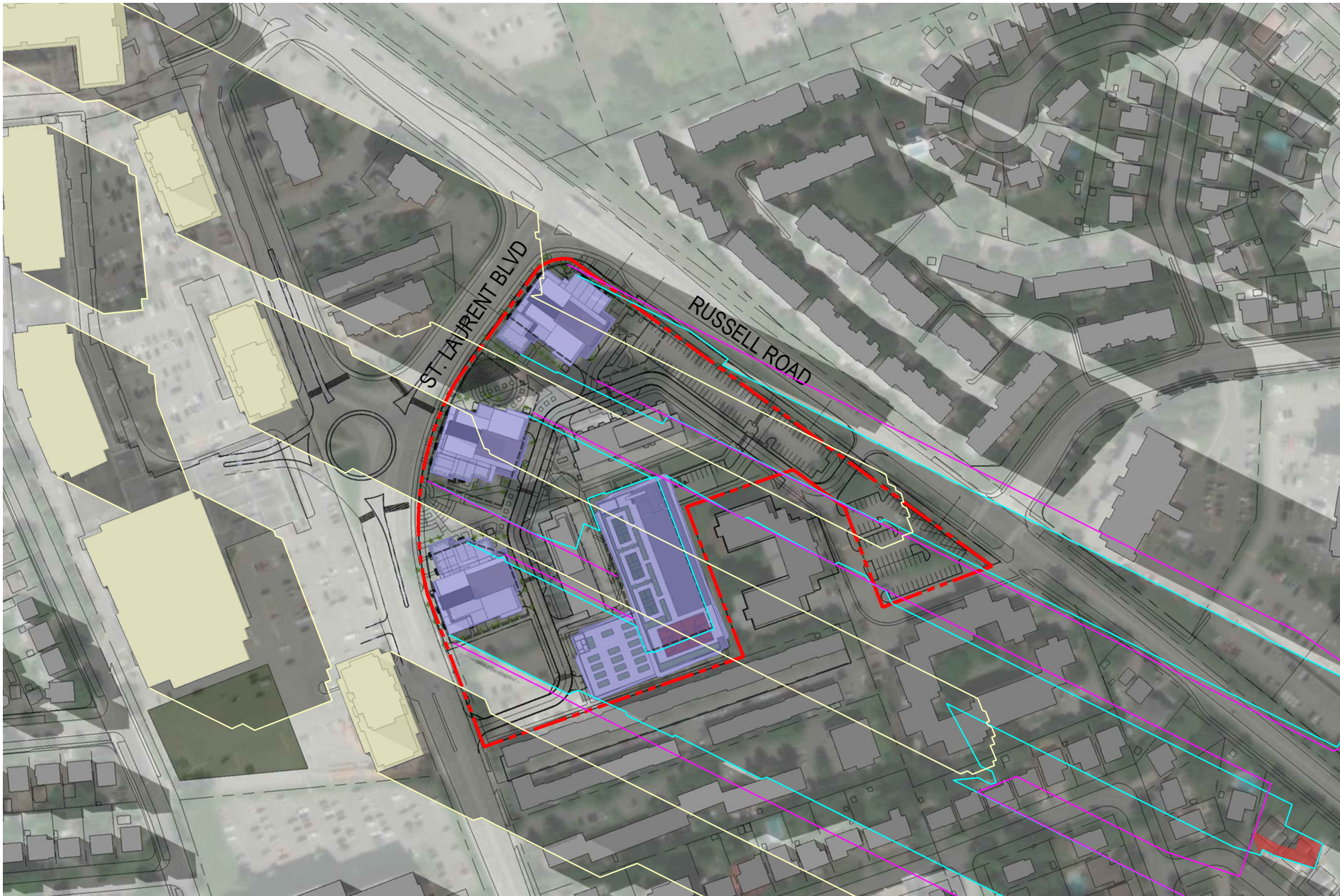
🕒 45.3990° N
 75.6238° W

JUNE 21 - 7PM EDT
 SUN SHADOW STUDY
 PROPOSED MULTI-FAMILY RESIDENTIAL DEVELOPMENT
 1971 & 1975 ST. LAURENT BLVD, OTTAWA, ON
 FOR: STARLIGHT DEVELOPMENTS



PETROFF

PETROFF PARTNERSHIP ARCHITECTS



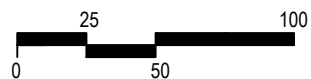
LEGEND

- - - PROPERTY LINE
- PROPOSED SHADOW LINE EXTENT
- AS OF RIGHT SHADOW LINE EXTENT
- AS OF RIGHT BUILDING ENVELOPE
- PROPOSED DEVELOPMENT
- APPROVED DEVELOPMENT
- NET SHADOW ON GRADE *

* PROPOSED MAXIMUM BUILDING HEIGHT = 54.0m (AS OF RIGHT)
 ADDITIONAL 6.27m (MECH PENTHOUSE) PERMITTED PROJECTION ABOVE MAIN ROOF = 60.27m

🕒 45.3990° N
 75.6238° W

JUNE 21 - 8PM EDT
 SUN SHADOW STUDY
 PROPOSED MULTI-FAMILY RESIDENTIAL DEVELOPMENT
 1971 & 1975 ST. LAURENT BLVD, OTTAWA, ON
 FOR: STARLIGHT DEVELOPMENTS



PETROFF

PETROFF PARTNERSHIP ARCHITECTS



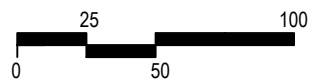
LEGEND

- - - PROPERTY LINE
- PROPOSED SHADOW LINE EXTENT
- AS OF RIGHT SHADOW LINE EXTENT
- AS OF RIGHT BUILDING ENVELOPE
- PROPOSED DEVELOPMENT
- APPROVED DEVELOPMENT
- NET SHADOW ON GRADE *

* PROPOSED MAXIMUM BUILDING HEIGHT = 54.0m (AS OF RIGHT)
 ADDITIONAL 6.27m (MECH PENTHOUSE) PERMITTED PROJECTION ABOVE MAIN ROOF = 60.27m

🕒 45.3990° N
 75.6238° W

SEPTEMBER 21 - 8AM EDT
 SUN SHADOW STUDY
 PROPOSED MULTI-FAMILY RESIDENTIAL DEVELOPMENT
 1971 & 1975 ST. LAURENT BLVD, OTTAWA, ON
 FOR: STARLIGHT DEVELOPMENTS



PETROFF

PETROFF PARTNERSHIP ARCHITECTS



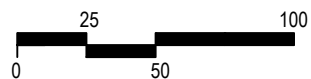
LEGEND

- - - PROPERTY LINE
- PROPOSED SHADOW LINE EXTENT
- AS OF RIGHT SHADOW LINE EXTENT
- AS OF RIGHT BUILDING ENVELOPE
- PROPOSED DEVELOPMENT
- APPROVED DEVELOPMENT
- NET SHADOW ON GRADE *

* PROPOSED MAXIMUM BUILDING HEIGHT = 54.0m (AS OF RIGHT)
 ADDITIONAL 6.27m (MECH PENTHOUSE) PERMITTED PROJECTION ABOVE MAIN ROOF = 60.27m

🕒 45.3990° N
 75.6238° W

SEPTEMBER 21 - 9AM EDT
 SUN SHADOW STUDY
 PROPOSED MULTI-FAMILY RESIDENTIAL DEVELOPMENT
 1971 & 1975 ST. LAURENT BLVD, OTTAWA, ON
 FOR: STARLIGHT DEVELOPMENTS



PETROFF

PETROFF PARTNERSHIP ARCHITECTS



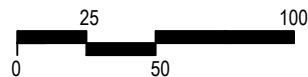
LEGEND

- - - PROPERTY LINE
- PROPOSED SHADOW LINE EXTENT
- AS OF RIGHT SHADOW LINE EXTENT
- AS OF RIGHT BUILDING ENVELOPE
- PROPOSED DEVELOPMENT
- APPROVED DEVELOPMENT
- NET SHADOW ON GRADE *

* PROPOSED MAXIMUM BUILDING HEIGHT = 54.0m (AS OF RIGHT)
 ADDITIONAL 6.27m (MECH PENTHOUSE) PERMITTED PROJECTION ABOVE MAIN ROOF = 60.27m

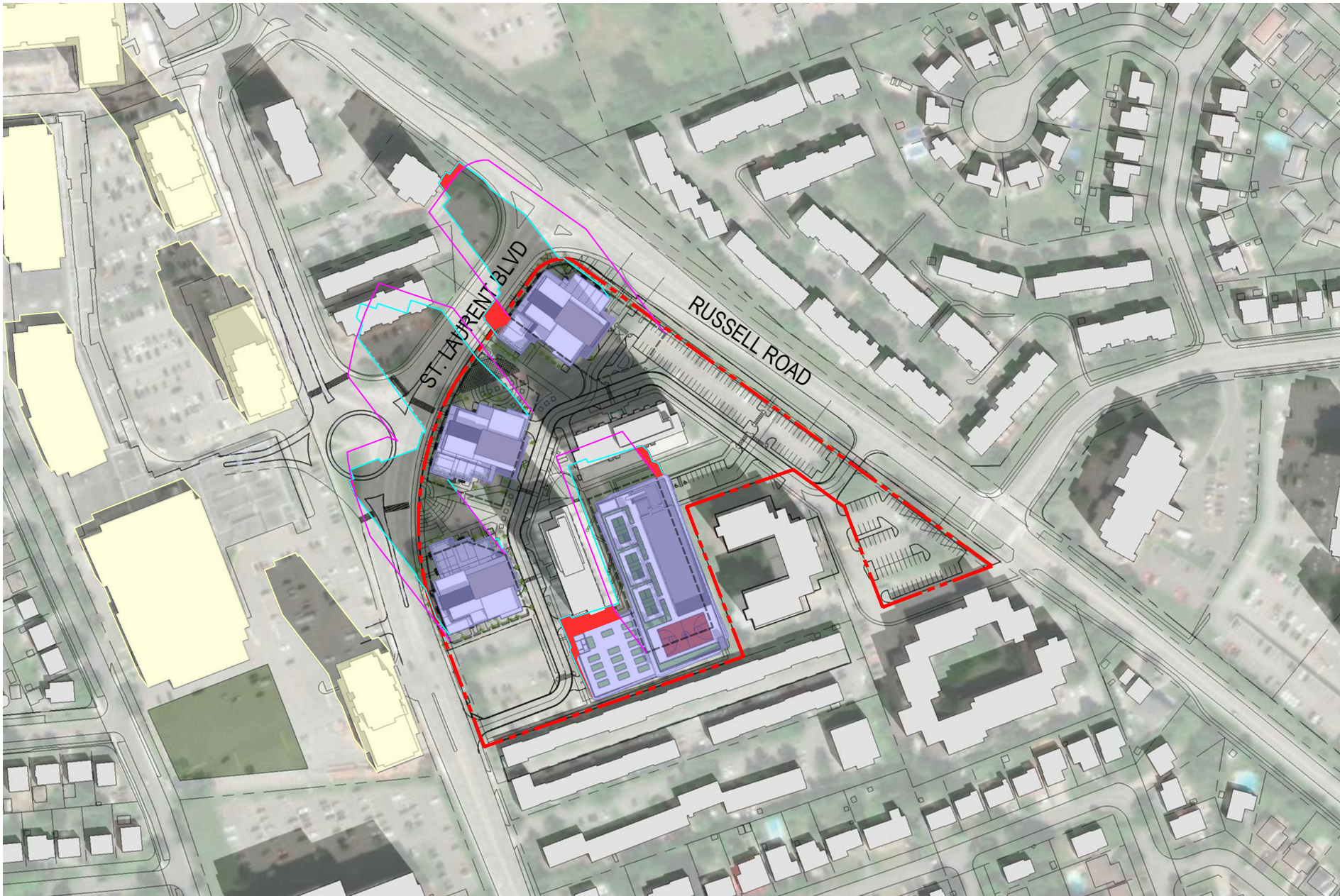
🕒 45.3990° N
 75.6238° W

SEPTEMBER 21 - 10AM EDT
 SUN SHADOW STUDY
 PROPOSED MULTI-FAMILY RESIDENTIAL DEVELOPMENT
 1971 & 1975 ST. LAURENT BLVD, OTTAWA, ON
 FOR: STARLIGHT DEVELOPMENTS



PETROFF

PETROFF PARTNERSHIP ARCHITECTS



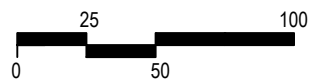
LEGEND

- - - PROPERTY LINE
- PROPOSED SHADOW LINE EXTENT
- AS OF RIGHT SHADOW LINE EXTENT
- AS OF RIGHT BUILDING ENVELOPE
- PROPOSED DEVELOPMENT
- APPROVED DEVELOPMENT
- NET SHADOW ON GRADE *

* PROPOSED MAXIMUM BUILDING HEIGHT = 54.0m (AS OF RIGHT)
 ADDITIONAL 6.27m (MECH PENTHOUSE) PERMITTED PROJECTION ABOVE MAIN ROOF = 60.27m

🕒 45.3990° N
 75.6238° W

SEPTEMBER 21 - 11AM EDT
 SUN SHADOW STUDY
 PROPOSED MULTI-FAMILY RESIDENTIAL DEVELOPMENT
 1971 & 1975 ST. LAURENT BLVD, OTTAWA, ON
 FOR: STARLIGHT DEVELOPMENTS



PETROFF

PETROFF PARTNERSHIP ARCHITECTS



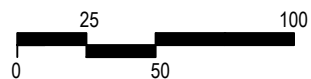
LEGEND

- - - PROPERTY LINE
- PROPOSED SHADOW LINE EXTENT
- AS OF RIGHT SHADOW LINE EXTENT
- AS OF RIGHT BUILDING ENVELOPE
- PROPOSED DEVELOPMENT
- APPROVED DEVELOPMENT
- NET SHADOW ON GRADE *

* PROPOSED MAXIMUM BUILDING HEIGHT = 54.0m (AS OF RIGHT)
 ADDITIONAL 6.27m (MECH PENTHOUSE) PERMITTED PROJECTION ABOVE MAIN ROOF = 60.27m

🕒 45.3990° N
 75.6238° W

SEPTEMBER 21 - 12PM EDT
 SUN SHADOW STUDY
 PROPOSED MULTI-FAMILY RESIDENTIAL DEVELOPMENT
 1971 & 1975 ST. LAURENT BLVD, OTTAWA, ON
 FOR: STARLIGHT DEVELOPMENTS



PETROFF

PETROFF PARTNERSHIP ARCHITECTS



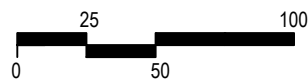
LEGEND

- - - PROPERTY LINE
- PROPOSED SHADOW LINE EXTENT
- AS OF RIGHT SHADOW LINE EXTENT
- AS OF RIGHT BUILDING ENVELOPE
- PROPOSED DEVELOPMENT
- APPROVED DEVELOPMENT
- NET SHADOW ON GRADE *

* PROPOSED MAXIMUM BUILDING HEIGHT = 54.0m (AS OF RIGHT)
 ADDITIONAL 6.27m (MECH PENTHOUSE) PERMITTED PROJECTION ABOVE MAIN ROOF = 60.27m

🕒 45.3990° N
 75.6238° W

SEPTEMBER 21 - 1PM EDT
 SUN SHADOW STUDY
 PROPOSED MULTI-FAMILY RESIDENTIAL DEVELOPMENT
 1971 & 1975 ST. LAURENT BLVD, OTTAWA, ON
 FOR: STARLIGHT DEVELOPMENTS



PETROFF

PETROFF PARTNERSHIP ARCHITECTS



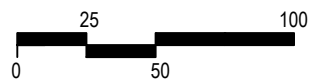
LEGEND

- - - PROPERTY LINE
- PROPOSED SHADOW LINE EXTENT
- AS OF RIGHT SHADOW LINE EXTENT
- AS OF RIGHT BUILDING ENVELOPE
- PROPOSED DEVELOPMENT
- APPROVED DEVELOPMENT
- NET SHADOW ON GRADE *

* PROPOSED MAXIMUM BUILDING HEIGHT = 54.0m (AS OF RIGHT)
 ADDITIONAL 6.27m (MECH PENTHOUSE) PERMITTED PROJECTION ABOVE MAIN ROOF = 60.27m

🕒 45.3990° N
 75.6238° W

SEPTEMBER 21 - 2PM EDT
 SUN SHADOW STUDY
 PROPOSED MULTI-FAMILY RESIDENTIAL DEVELOPMENT
 1971 & 1975 ST. LAURENT BLVD, OTTAWA, ON
 FOR: STARLIGHT DEVELOPMENTS



PETROFF

PETROFF PARTNERSHIP ARCHITECTS



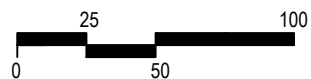
LEGEND

- - - PROPERTY LINE
- PROPOSED SHADOW LINE EXTENT
- AS OF RIGHT SHADOW LINE EXTENT
- AS OF RIGHT BUILDING ENVELOPE
- PROPOSED DEVELOPMENT
- APPROVED DEVELOPMENT
- NET SHADOW ON GRADE *

* PROPOSED MAXIMUM BUILDING HEIGHT = 54.0m (AS OF RIGHT)
 ADDITIONAL 6.27m (MECH PENTHOUSE) PERMITTED PROJECTION ABOVE MAIN ROOF = 60.27m

🕒 45.3990° N
 75.6238° W

SEPTEMBER 21 - 3PM EDT
 SUN SHADOW STUDY
 PROPOSED MULTI-FAMILY RESIDENTIAL DEVELOPMENT
 1971 & 1975 ST. LAURENT BLVD, OTTAWA, ON
 FOR: STARLIGHT DEVELOPMENTS



PETROFF

PETROFF PARTNERSHIP ARCHITECTS



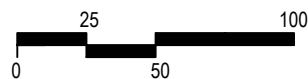
LEGEND

- - - PROPERTY LINE
- PROPOSED SHADOW LINE EXTENT
- AS OF RIGHT SHADOW LINE EXTENT
- - - AS OF RIGHT BUILDING ENVELOPE
- PROPOSED DEVELOPMENT
- APPROVED DEVELOPMENT
- NET SHADOW ON GRADE *

* PROPOSED MAXIMUM BUILDING HEIGHT = 54.0m (AS OF RIGHT)
 ADDITIONAL 6.27m (MECH PENTHOUSE) PERMITTED PROJECTION ABOVE MAIN ROOF = 60.27m

🕒 45.3990° N
 75.6238° W

SEPTEMBER 21 - 4PM EDT
 SUN SHADOW STUDY
 PROPOSED MULTI-FAMILY RESIDENTIAL DEVELOPMENT
 1971 & 1975 ST. LAURENT BLVD, OTTAWA, ON
 FOR: STARLIGHT DEVELOPMENTS



PETROFF

PETROFF PARTNERSHIP ARCHITECTS



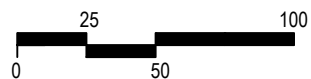
LEGEND

- - - PROPERTY LINE
- PROPOSED SHADOW LINE EXTENT
- AS OF RIGHT SHADOW LINE EXTENT
- AS OF RIGHT BUILDING ENVELOPE
- PROPOSED DEVELOPMENT
- APPROVED DEVELOPMENT
- NET SHADOW ON GRADE *

* PROPOSED MAXIMUM BUILDING HEIGHT = 54.0m (AS OF RIGHT)
 ADDITIONAL 6.27m (MECH PENTHOUSE) PERMITTED PROJECTION ABOVE MAIN ROOF = 60.27m

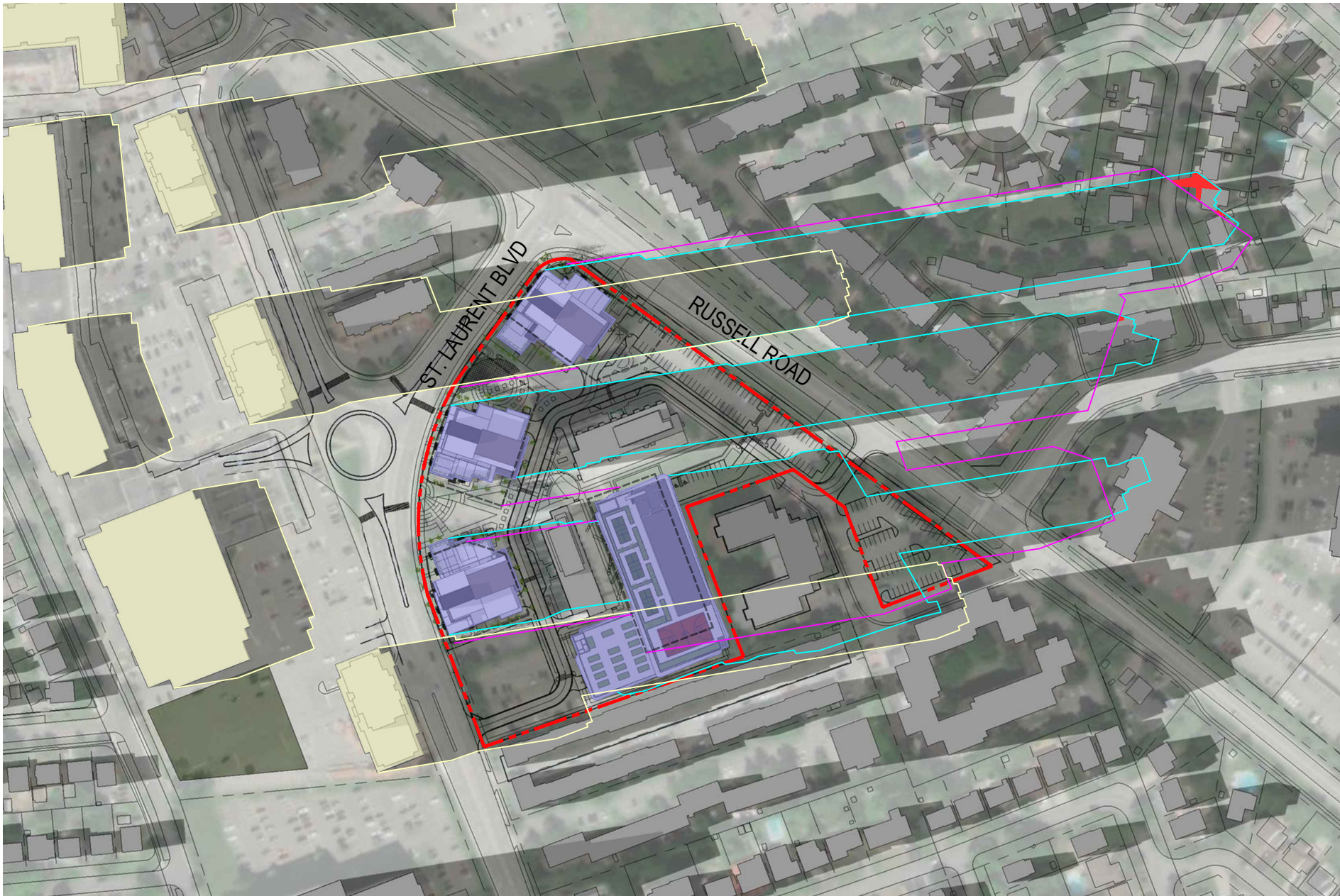
🕒 45.3990° N
 75.6238° W

SEPTEMBER 21 - 5PM EDT
 SUN SHADOW STUDY
 PROPOSED MULTI-FAMILY RESIDENTIAL DEVELOPMENT
 1971 & 1975 ST. LAURENT BLVD, OTTAWA, ON
 FOR: STARLIGHT DEVELOPMENTS



PETROFF

PETROFF PARTNERSHIP ARCHITECTS



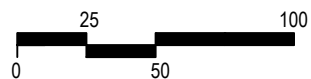
LEGEND

- - - PROPERTY LINE
- PROPOSED SHADOW LINE EXTENT
- AS OF RIGHT SHADOW LINE EXTENT
- AS OF RIGHT BUILDING ENVELOPE
- PROPOSED DEVELOPMENT
- APPROVED DEVELOPMENT
- NET SHADOW ON GRADE *

* PROPOSED MAXIMUM BUILDING HEIGHT = 54.0m (AS OF RIGHT)
 ADDITIONAL 6.27m (MECH PENTHOUSE) PERMITTED PROJECTION ABOVE MAIN ROOF = 60.27m

🕒 45.3990° N
 75.6238° W

SEPTEMBER 21 - 6PM EDT
 SUN SHADOW STUDY
 PROPOSED MULTI-FAMILY RESIDENTIAL DEVELOPMENT
 1971 & 1975 ST. LAURENT BLVD, OTTAWA, ON
 FOR: STARLIGHT DEVELOPMENTS



PETROFF

PETROFF PARTNERSHIP ARCHITECTS



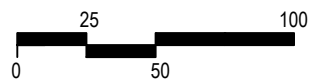
LEGEND

- - - PROPERTY LINE
- PROPOSED SHADOW LINE EXTENT
- AS OF RIGHT SHADOW LINE EXTENT
- AS OF RIGHT BUILDING ENVELOPE
- PROPOSED DEVELOPMENT
- APPROVED DEVELOPMENT
- NET SHADOW ON GRADE *

* PROPOSED MAXIMUM BUILDING HEIGHT = 54.0m (AS OF RIGHT)
 ADDITIONAL 6.27m (MECH PENTHOUSE) PERMITTED PROJECTION ABOVE MAIN ROOF = 60.27m

🕒 45.3990° N
 75.6238° W

DECEMBER 21 - 9AM EST
 SUN SHADOW STUDY
 PROPOSED MULTI-FAMILY RESIDENTIAL DEVELOPMENT
 1971 & 1975 ST. LAURENT BLVD, OTTAWA, ON
 FOR: STARLIGHT DEVELOPMENTS



PETROFF

PETROFF PARTNERSHIP ARCHITECTS



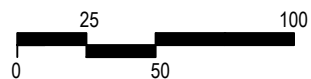
LEGEND

- - - PROPERTY LINE
- PROPOSED SHADOW LINE EXTENT
- AS OF RIGHT SHADOW LINE EXTENT
- AS OF RIGHT BUILDING ENVELOPE
- PROPOSED DEVELOPMENT
- APPROVED DEVELOPMENT
- NET SHADOW ON GRADE *

* PROPOSED MAXIMUM BUILDING HEIGHT = 54.0m (AS OF RIGHT)
 ADDITIONAL 6.27m (MECH PENTHOUSE) PERMITTED PROJECTION ABOVE MAIN ROOF = 60.27m

🕒 45.3990° N
 75.6238° W

DECEMBER 21 - 10AM EST
 SUN SHADOW STUDY
 PROPOSED MULTI-FAMILY RESIDENTIAL DEVELOPMENT
 1971 & 1975 ST. LAURENT BLVD, OTTAWA, ON
 FOR: STARLIGHT DEVELOPMENTS



PETROFF

PETROFF PARTNERSHIP ARCHITECTS



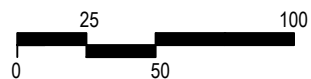
LEGEND

- - - PROPERTY LINE
- PROPOSED SHADOW LINE EXTENT
- AS OF RIGHT SHADOW LINE EXTENT
- AS OF RIGHT BUILDING ENVELOPE
- PROPOSED DEVELOPMENT
- APPROVED DEVELOPMENT
- NET SHADOW ON GRADE *

* PROPOSED MAXIMUM BUILDING HEIGHT = 54.0m (AS OF RIGHT)
 ADDITIONAL 6.27m (MECH PENTHOUSE) PERMITTED PROJECTION ABOVE MAIN ROOF = 60.27m

🕒 45.3990° N
 75.6238° W

DECEMBER 21 - 11AM EST
 SUN SHADOW STUDY
 PROPOSED MULTI-FAMILY RESIDENTIAL DEVELOPMENT
 1971 & 1975 ST. LAURENT BLVD, OTTAWA, ON
 FOR: STARLIGHT DEVELOPMENTS



PETROFF

PETROFF PARTNERSHIP ARCHITECTS



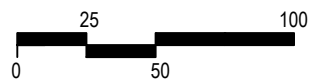
LEGEND

- - - PROPERTY LINE
- PROPOSED SHADOW LINE EXTENT
- AS OF RIGHT SHADOW LINE EXTENT
- AS OF RIGHT BUILDING ENVELOPE
- PROPOSED DEVELOPMENT
- APPROVED DEVELOPMENT
- NET SHADOW ON GRADE *

* PROPOSED MAXIMUM BUILDING HEIGHT = 54.0m (AS OF RIGHT)
 ADDITIONAL 6.27m (MECH PENTHOUSE) PERMITTED PROJECTION ABOVE MAIN ROOF = 60.27m

🕒 45.3990° N
 75.6238° W

DECEMBER 21 - 12PM EST
 SUN SHADOW STUDY
 PROPOSED MULTI-FAMILY RESIDENTIAL DEVELOPMENT
 1971 & 1975 ST. LAURENT BLVD, OTTAWA, ON
 FOR: STARLIGHT DEVELOPMENTS



PETROFF

PETROFF PARTNERSHIP ARCHITECTS



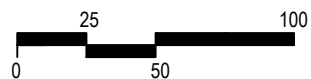
LEGEND

- - - PROPERTY LINE
- PROPOSED SHADOW LINE EXTENT
- AS OF RIGHT SHADOW LINE EXTENT
- AS OF RIGHT BUILDING ENVELOPE
- PROPOSED DEVELOPMENT
- APPROVED DEVELOPMENT
- NET SHADOW ON GRADE *

* PROPOSED MAXIMUM BUILDING HEIGHT = 54.0m (AS OF RIGHT)
 ADDITIONAL 6.27m (MECH PENTHOUSE) PERMITTED PROJECTION ABOVE MAIN ROOF = 60.27m

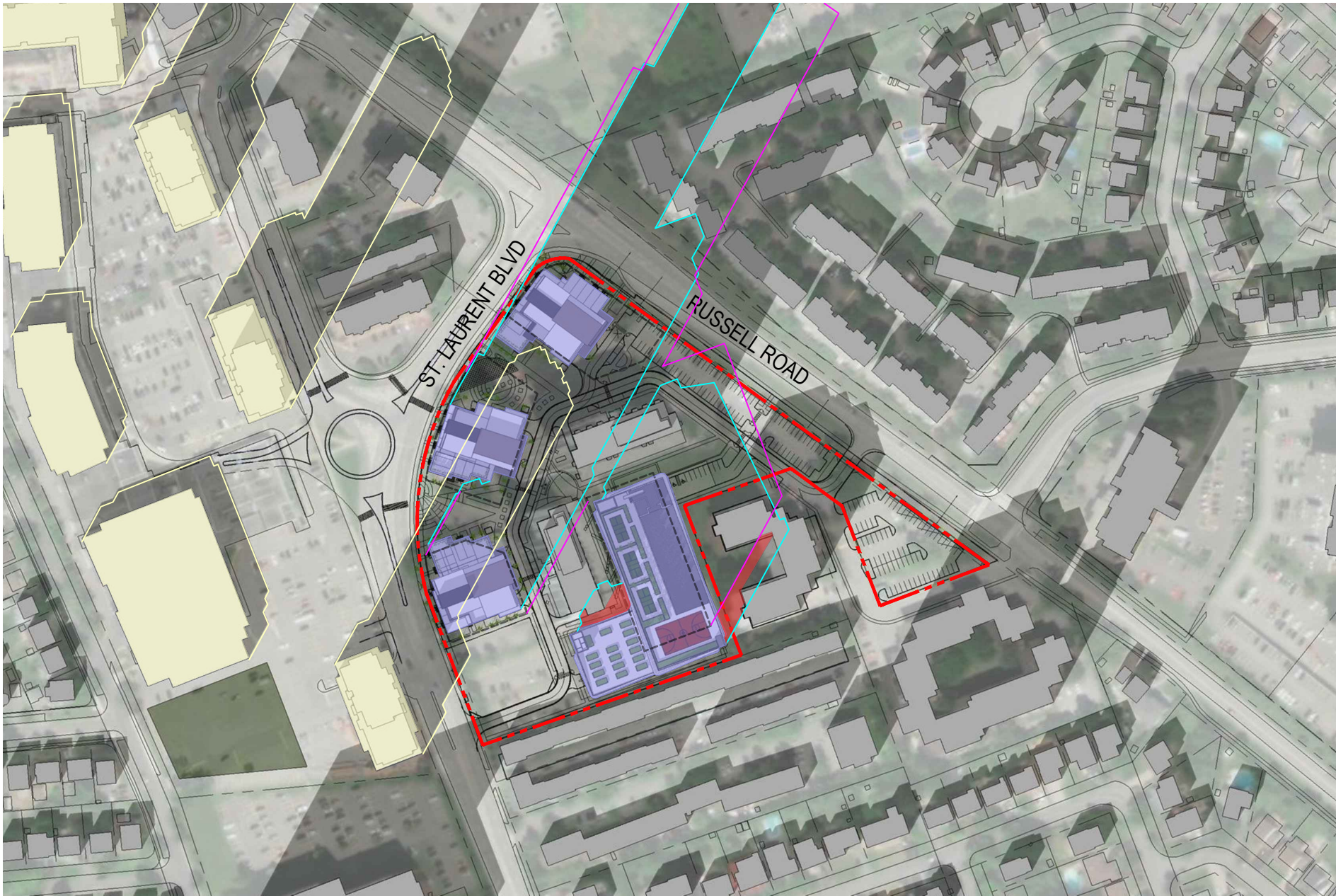
🕒 45.3990° N
 75.6238° W

DECEMBER 21 - 1PM EST
 SUN SHADOW STUDY
 PROPOSED MULTI-FAMILY RESIDENTIAL DEVELOPMENT
 1971 & 1975 ST. LAURENT BLVD, OTTAWA, ON
 FOR: STARLIGHT DEVELOPMENTS



PETROFF

PETROFF PARTNERSHIP ARCHITECTS



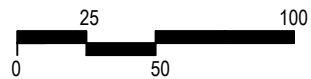
LEGEND

- - - PROPERTY LINE
- PROPOSED SHADOW LINE EXTENT
- AS OF RIGHT SHADOW LINE EXTENT
- AS OF RIGHT BUILDING ENVELOPE
- PROPOSED DEVELOPMENT
- APPROVED DEVELOPMENT
- NET SHADOW ON GRADE *

* PROPOSED MAXIMUM BUILDING HEIGHT = 54.0m (AS OF RIGHT)
 ADDITIONAL 6.27m (MECH PENTHOUSE) PERMITTED PROJECTION ABOVE MAIN ROOF = 60.27m

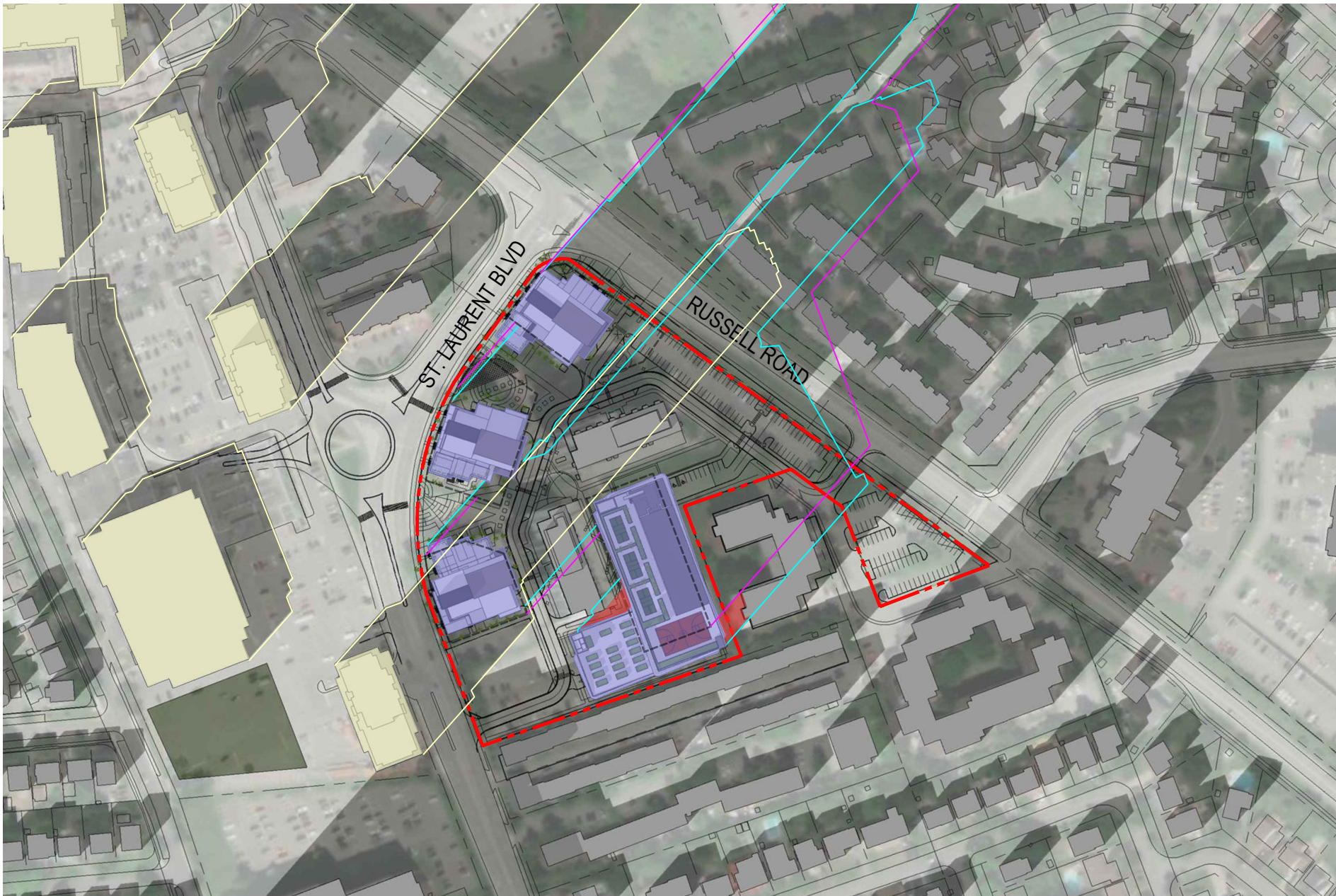
🕒 45.3990° N
 75.6238° W

DECEMBER 21 - 2PM EST
 SUN SHADOW STUDY
 PROPOSED MULTI-FAMILY RESIDENTIAL DEVELOPMENT
 1971 & 1975 ST. LAURENT BLVD, OTTAWA, ON
 FOR: STARLIGHT DEVELOPMENTS



PETROFF

PETROFF PARTNERSHIP ARCHITECTS



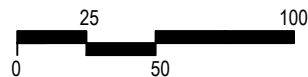
LEGEND

- - - PROPERTY LINE
- PROPOSED SHADOW LINE EXTENT
- AS OF RIGHT SHADOW LINE EXTENT
- AS OF RIGHT BUILDING ENVELOPE
- PROPOSED DEVELOPMENT
- APPROVED DEVELOPMENT
- NET SHADOW ON GRADE *

* PROPOSED MAXIMUM BUILDING HEIGHT = 54.0m (AS OF RIGHT)
 ADDITIONAL 6.27m (MECH PENTHOUSE) PERMITTED PROJECTION ABOVE MAIN ROOF = 60.27m

🕒 45.3990° N
 75.6238° W

DECEMBER 21 - 3PM EST
 SUN SHADOW STUDY
 PROPOSED MULTI-FAMILY RESIDENTIAL DEVELOPMENT
 1971 & 1975 ST. LAURENT BLVD, OTTAWA, ON
 FOR: STARLIGHT DEVELOPMENTS



PETROFF

PETROFF PARTNERSHIP ARCHITECTS