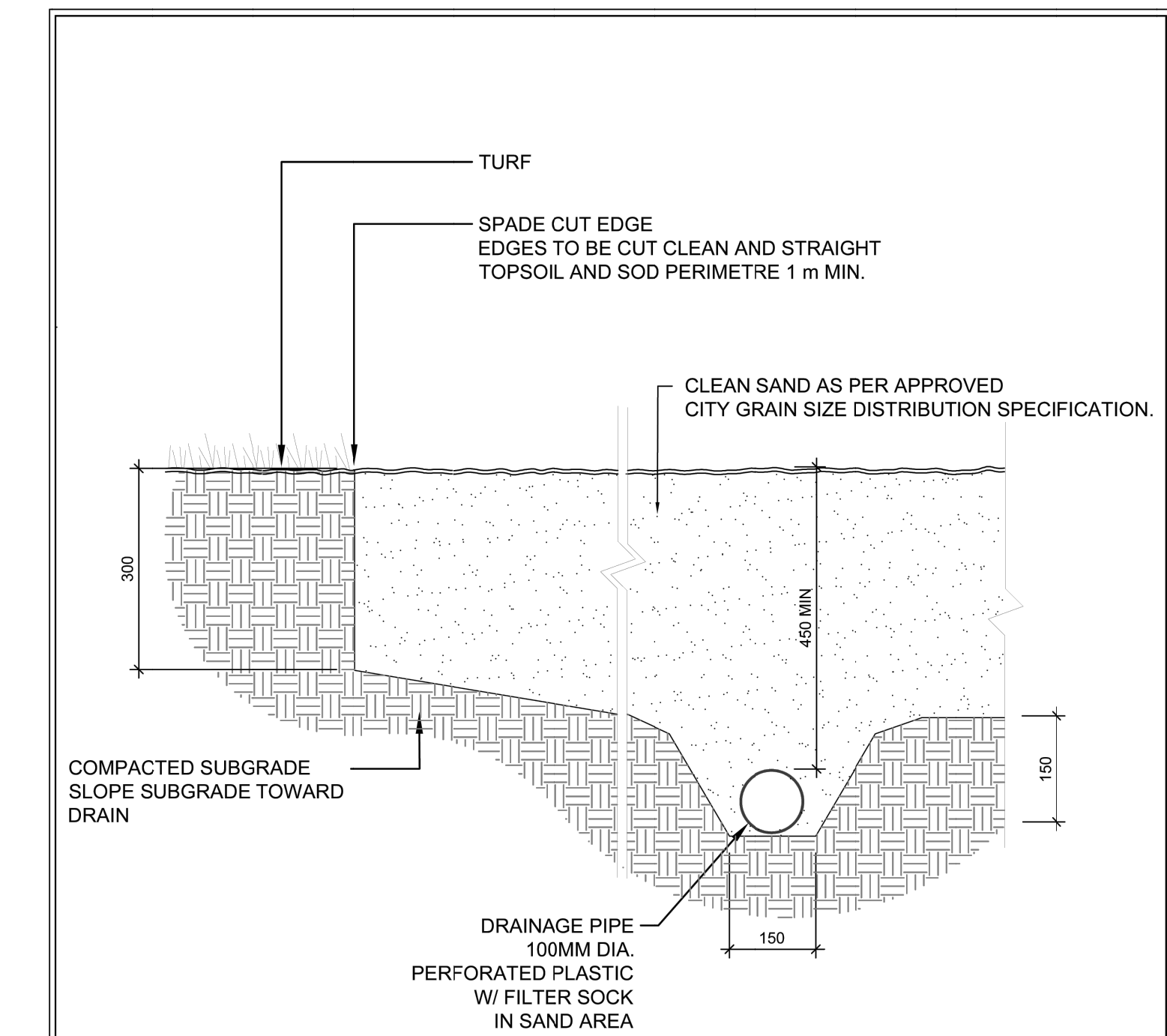


CALIPER B AND B TREES - CORKERY COMMUNITY HALL EXPANSION					
Code	Qty.	Botanical Name	Common Name	Size	Condition
AR	3	Acer rubrum	Red Maple	70mm cal	B + B specimen
AS	3	Acer saccharum	Sugar Maple	70mm cal	B + B specimen
CO	3	Celtis occidentalis	Common Hackberry	70mm cal	B + B specimen
QM	3	Quercus macrocarpa	Bur Oak	70mm cal	B + B specimen

SHRUBS - CORKERY COMMUNITY HALL EXPANSION					
Code	Qty.	Botanical Name	Common Name	Size	Condition
HK	150	Hypericum kalmianum	St. John's Wort	30cm Ht.	Pot



NOTE:
ALL MEASUREMENTS ARE IN MILLIMETRES UNLESS STATED OTHERWISE.

Ottawa
TITLE: SAND PLAY AREA/ SPADE EDGE (WITH DRAINAGE PIPE)
DATE: MAR 2012
SCALE: N.T.S.
DWG No: PL-02

ARCHITECT
CSV 190 Oconnor Street Ottawa K2P 2R3

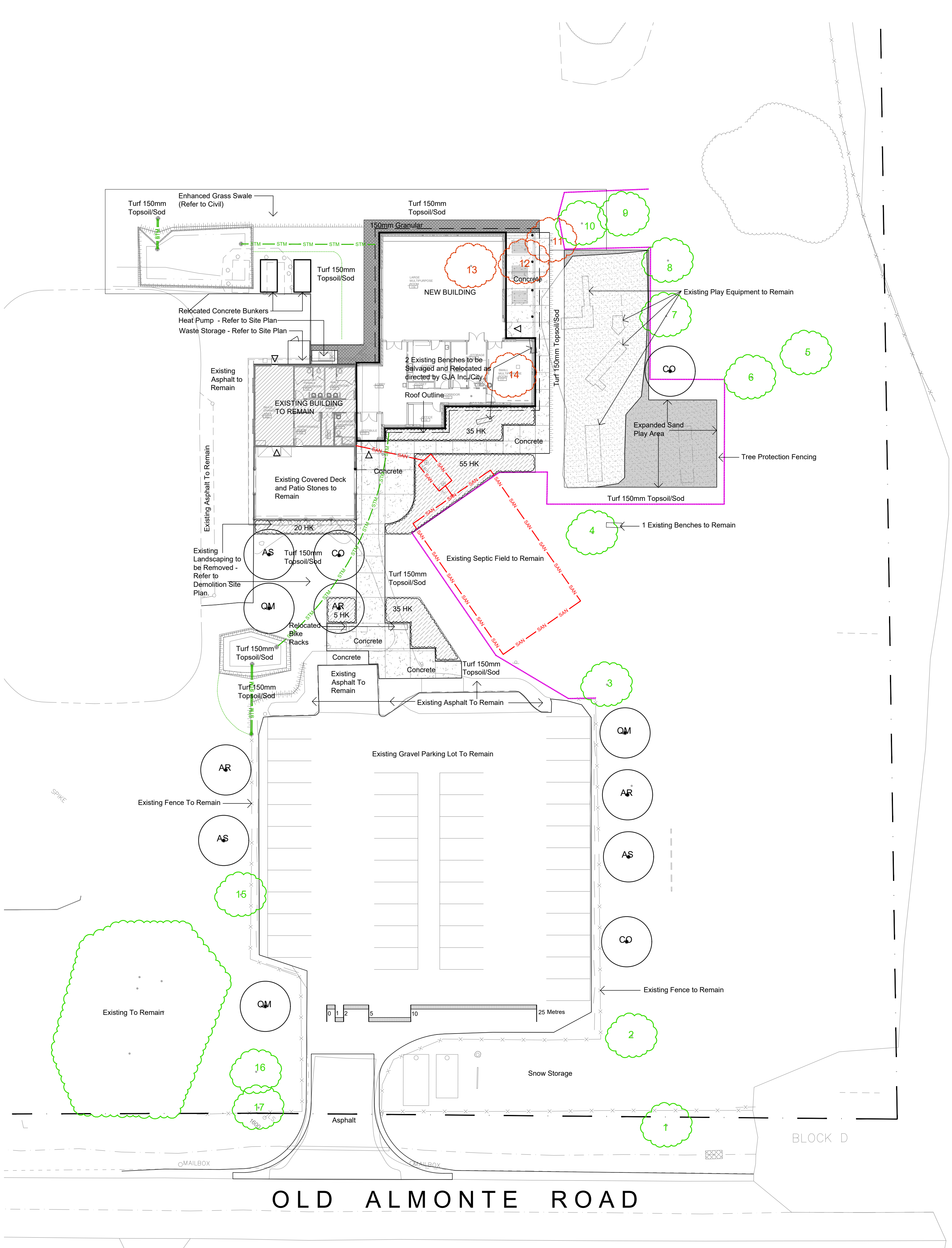
SURVEYOR
City of Ottawa 110 Laurier Avenue Ottawa K1P 1J1

CIVIL ENGINEER
McIntosh Perry 115 Walgreen Rd. Carp K0A 1L0

FORESTRY
IFS ASSOCIATES PO Box 13593 Ottawa K2K 1X6

No.	Tree Species	Caliber	Notes
1	Apple (Malus spp.)	18 mm	Fruit mature, tree has experienced frost damage, very close crown, ornamental value, to be preserved and protected.
2	Baldern (Quercus alba)	113	Fruit mature, tree has experienced frost damage, very close crown, ornamental value, to be preserved and protected.
3	Burnham (Picea canadensis)	51	Very good, mature, tree has experienced frost damage, very close crown, ornamental value, to be preserved and protected.
4	Burnham (Picea canadensis)	35	Very good, mature, tree has experienced frost damage, very close crown, ornamental value, to be preserved and protected.
5	Red Oak (Quercus macrocarpa)	35	Fruit mature, tree has experienced frost damage, very close crown, ornamental value, to be preserved and protected.
6	Baldern (Quercus alba)	161	Good, mature, tree has experienced frost damage, very close crown, ornamental value, to be preserved and protected.
7	Maple (Acer spp.)	24	Good, mature, tree has experienced frost damage, very close crown, ornamental value, to be preserved and protected.
8	Red Oak (Quercus macrocarpa)	23	Good, mature, tree has experienced frost damage, very close crown, ornamental value, to be preserved and protected.
9	White Spruce (Picea canadensis)	14	Good, mature, tree has experienced frost damage, very close crown, ornamental value, to be preserved and protected.
10	White Spruce (Picea canadensis)	141	Fruit mature, tree has experienced frost damage, very close crown, ornamental value, to be preserved and protected.
11	White Spruce (Picea canadensis)	143	Fruit mature, tree has experienced frost damage, very close crown, ornamental value, to be preserved and protected.
12	White Spruce (Picea canadensis)	134	Fruit mature, tree has experienced frost damage, very close crown, ornamental value, to be preserved and protected.
13	White Spruce (Picea canadensis)	134	Fruit mature, tree has experienced frost damage, very close crown, ornamental value, to be preserved and protected.
14	Maple (Acer spp.)	23	Fruit mature, tree has experienced frost damage, very close crown, ornamental value, to be preserved and protected.
15	Red Oak (Quercus macrocarpa)	35	Fruit mature, tree has experienced frost damage, very close crown, ornamental value, to be preserved and protected.
16	Red Oak (Quercus macrocarpa)	168	Fruit mature, tree has experienced frost damage, very close crown, ornamental value, to be preserved and protected.
17	Maple (Acer spp.)	12 mm	Fruit mature, tree has experienced frost damage, very close crown, ornamental value, to be preserved and protected.

REFER TO TREE CONSERVATION REPORT BY IFS ASSOCIATES FOR FULL AND LATEST REPORT FOR TREE PROTECTION, RETENTION, REMOVAL.

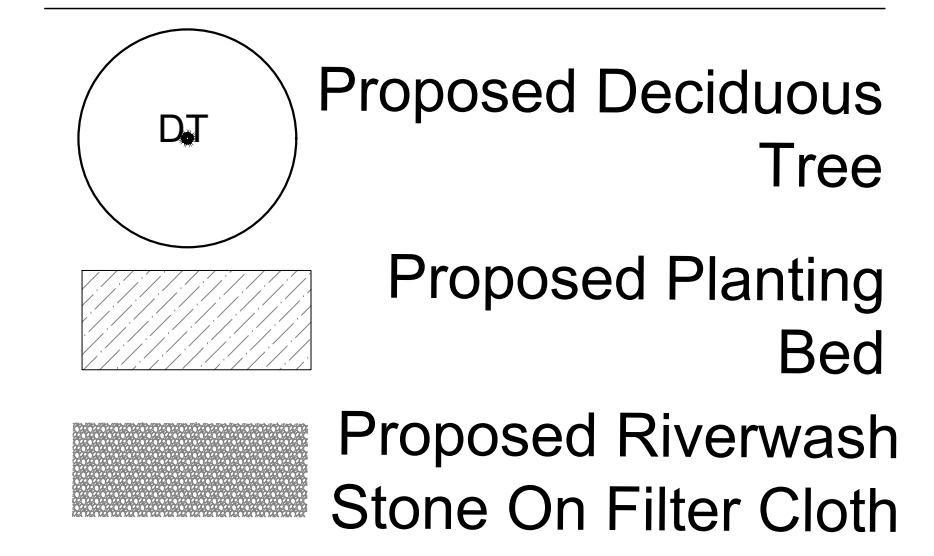


Drawing Represents the Property of Copyright Reserved by Gino J. Aiello Landscape Architect. Do Not Use or Reproduce Without Approval of Gino J. Aiello.
NOT To Be Used For Construction Unless indicated by Revision: "FOR LANDSCAPE CONSTRUCTION"
Contractor is Responsible for Verification of Site Locations of all Utilities. Report any Discrepancies Between Site and Drawing Immediately to Gino J. Aiello. Do NOT Proceed Until Clarified.
TURF AREAS TO BE SOD C/W 150MM DEPTH TOPSOIL ON APPROVED SUBGRADE | SOD TO BE #1 GRADE TURFGRASS NURSERY SOD per NSGA - Fine Fescue/Kentucky Bluegrass Sod | PLANTING MIX TO BE APPROVED BY LANDSCAPE ARCHITECT | PLANT MATERIAL TO MEET CNLA STANDARDS/BE APPROVED BY LANDSCAPE ARCHITECT PRIOR TO PLANTING | ALL MATERIALS & WORK TO BE MAINTAINED UNTIL FINAL ACCEPTANCE, (MOWING TURF, WEEDING BEDS, WATERING TURF & PLANTS) & INCLUDE 1 YEAR WARRANTY FROM DATE OF FINAL ACCEPTANCE | PROVIDE WATERING OF ALL PLANT MATERIAL AS REQUIRED FOR PROPER ESTABLISHMENT, UNTIL END OF WARRANTY PERIOD | REFER TO CIVIL ENGINEER'S DRAWING FOR ELEVATIONS / GRADING |
The Landscape Plan is to be read in conjunction with the grading, servicing, site and survey plan | Bare root material to be planted in season only | All plant material locations to be staked on site by the landscape contractor and checked by the landscape architect prior to planting | All trees to be preserved on or directly adjacent to the site will be protected | Plant material are to be installed a minimum of: 3.0m away from any part of any hydro transformer, 3.0m corridor between a fire hydrant and the curb, a 2.5m radius beside or behind a fire hydrant, 2.0m from any servicing/utility line or structure |

REFER TO TCR BY IFS



LANDSCAPE PLAN LEGEND



9	SPC SUBMISSION	MAY 29 2023
8	SPC SUBMISSION	APRIL 25 2023
7	IFC	DECEMBER 15 2022
6	SPC SUBMISSION	DECEMBER 2 2022
5	IFC	NOVEMBER 4 2022
4	SPC SUBMISSION 1 / TENDER	FEBRUARY 23 2022
3	99%	OCTOBER 27 2021
2	66%	SEPTEMBER 29 2021
1	33%	SEPTEMBER 2021
0	REVIEW / COORDINATION	SEPTEMBER 2021
No.	Revision	Date

Property Owner: **City of Ottawa**
110 Laurier Avenue Ottawa K1P 1J1

Gino J. Aiello | landscape architect
GJA Inc.
GJALA.com
Gino@GJALA.com (613) 286 5130
110 Dabury Road Unit # 9 | Ottawa Ontario | K2J 0C2

CORKERY COMMUNITY HALL EXPANSION
Project: 3447 Old Almonte Road

Landscape Plan
Drawing: Sheet Number L1

Scale: 1:250

City of Ottawa Logo

CORKERY COMMUNITY HALL EXPANSION
Project: 3447 Old Almonte Road

Landscape Plan
Drawing: Sheet Number L1

Scale: 1:250

D07-12-22-0048