

Drawing Remains the Property of/Copyright Reserved by GJA INC. Do Not Use or Reproduce Without Approval of GJA INC. NOT To Be Used For Construction Unless indicated by Revision: "FOR LANDSCAPE CONSTRUCTION". Contractor is Responsible for Verification of Site Locations of all Utilities. Report any Discrepancies Between Site and Drawing Immediately to GJA INC. Do NOT Proceed Until Clarified.

TURF AREAS TO BE SOD C/W 150MM DEPTH TOPSOIL ON APPROVED SUBGRADE | SOD TO BE #1 GRADE TURFGRASS NURSERY SOD per NSGA - Fine Fescue/Kentucky Bluegrass Sod | PLANTING MIX TO BE APPROVED BY LANDSCAPE ARCHITECT | PLANT MATERIAL TO MEET CNLA STANDARDS/BE APPROVED BY LANDSCAPE ARCHITECT PRIOR TO PLANTING | ALL MATERIALS & WORK TO BE MAINTAINED UNTIL FINAL ACCEPTANCE, (MOWING TURF, WEEDING BEDS, WATERING TURF & PLANTS) & INCLUDE 1 YEAR WARRANTY FROM DATE OF FINAL ACCEPTANCE | PROVIDE WATERING OF ALL PLANT MATERIAL AS REQUIRED FOR PROPER ESTABLISHMENT UNTIL END OF WARRANTY PERIOD | REFER TO CIVIL ENGINEER'S DRAWING FOR ELEVATIONS / GRADING |

The Landscape Plan is to be read in conjunction with the grading, servicing, site and survey plan | Bare root material to be planted in season only | All plant material locations to be staked on site by the landscape contractor and checked by the landscape architect prior to planting | All trees to be protected | Plant material are to be installed a minimum of: 3.0m away from any part of any hydro transformer, 3.0m corridor between a fire hydrant and the curb, a 2.5m radius beside or behind a fire hydrant, 2.0m from any servicing/utility line or structure |

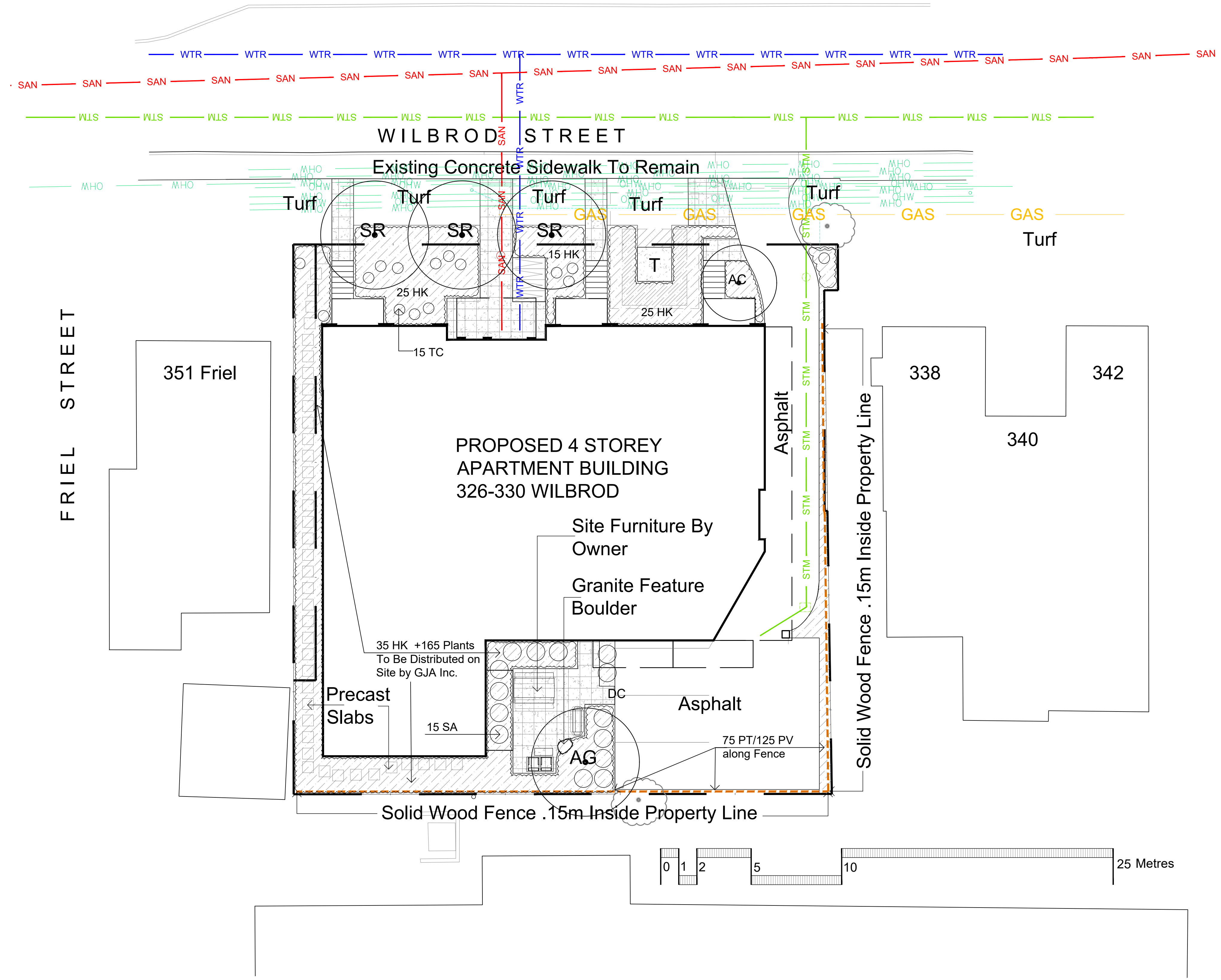
1 Existing Tree - Refer TO TCR by Others for Details/Actions

LANDSCAPE PLAN LEGEND

- Proposed Deciduous Tree
- Proposed Planting Bed
- Proposed Pedestrian Paving

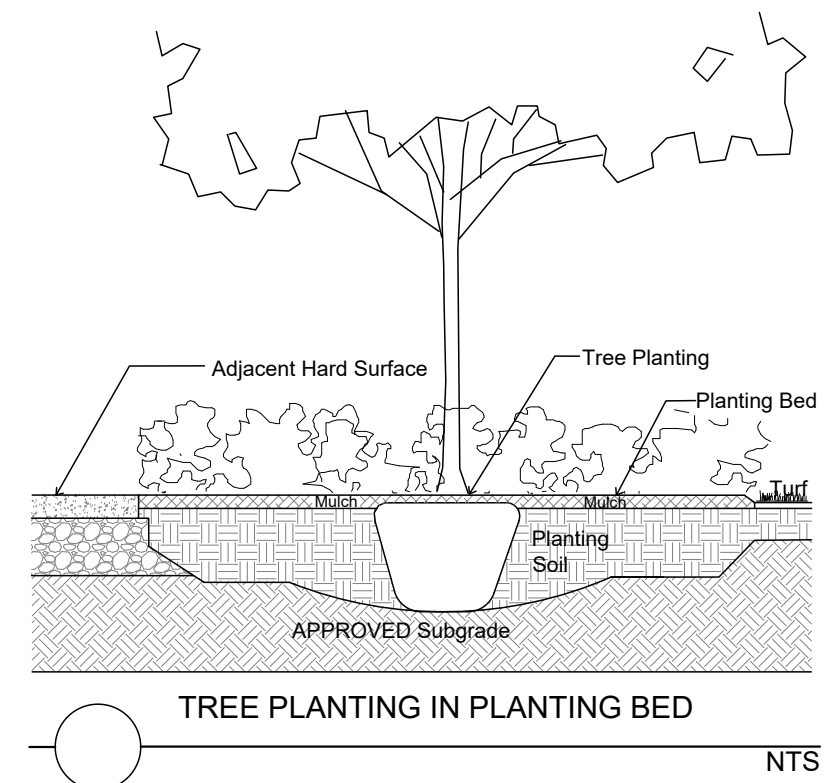
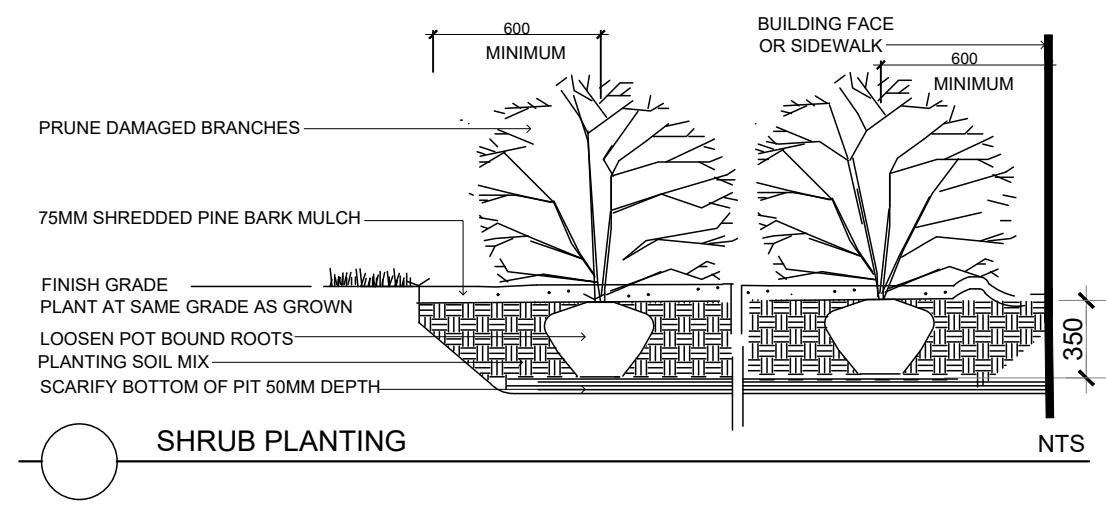
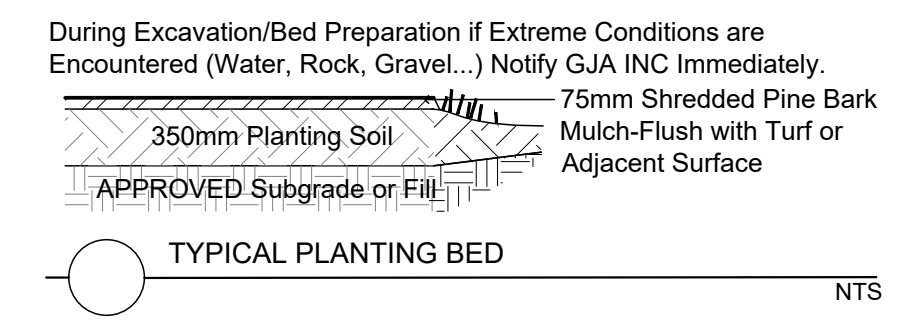
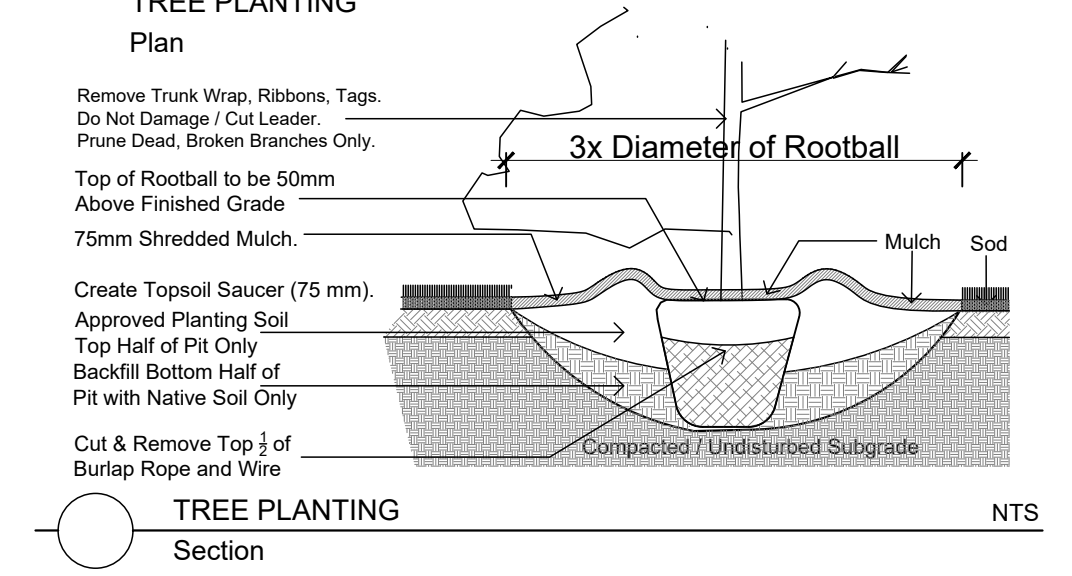
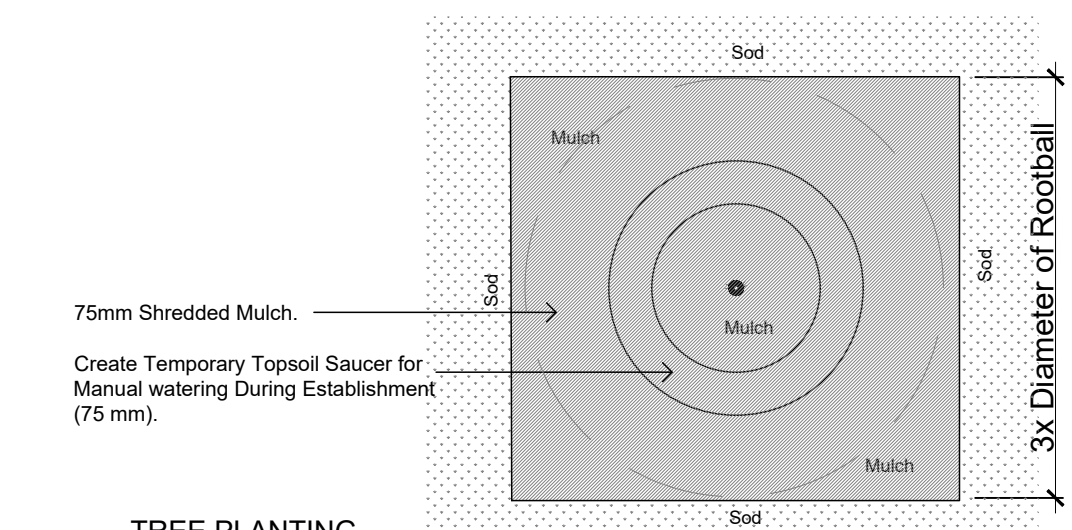
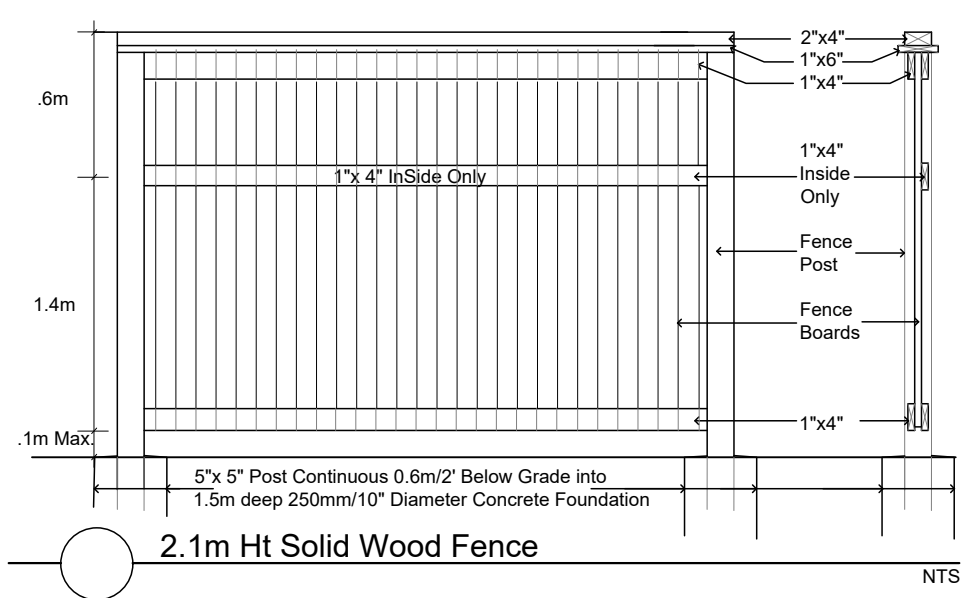
BELOW GRADE SERVICES REFER TO CIVIL /CUP

- WTR U/G Water Service
- STM U/G Storm Service
- SAN U/G Sanitary Service
- GAS U/G Gas Service
- BC U/G TelCo Service
- H U/G Hydro Service
- OHV O/H Hydro Service



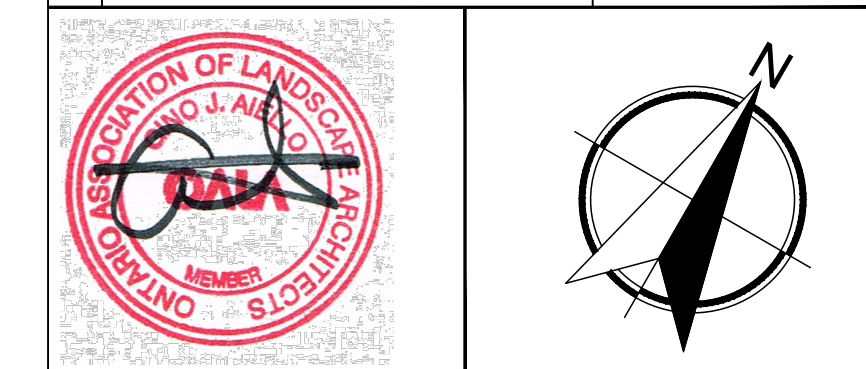
Andrew McCreight
ANDREW MCCREIGHT
 MANAGER (A), DEVELOPMENT REVIEW CENTRAL
 PLANNING, REAL ESTATE & ECONOMIC DEVELOPMENT
 DEPARTMENT, CITY OF OTTAWA

APPROVED
 By Andrew McCreight at 2:14 pm, Jun 09, 2023



TREES					
Code	Qty.	Botanical Name	Common Name	Size	Condition
AC	1	Amelanchier canadensis	Serviceberry	50mm cal	B + B specimen
AG	1	Aesculus glabra	Ohio Buckeye	50mm cal	B + B specimen
SR	3	Syringa reticulata	Japanese Tree Lilac	60mm cal	B + B specimen
SHRUBS					
Code	Qty.	Botanical Name	Common Name	Size	Condition
HK	100	Hypericum kalmianum	St. John's Wort	40cm Ht.	Pot
SA	15	Spiraea alba	Meadowsweet	60cm Ht.	Pot
PV	125	Panicum virgatum	Switch Grass		9cm Pot
PT	75	Parthenocissus tricuspidata	Boston Ivy		9cm Pot
TC	15	Taxus cuspidata 'Monloo'	Emerald Spreader Yew	30cm spr	Pot
EXTRA MATERIAL TO BE DISTRIBUTED AT DISCRETION OF GJA INC					
Qty.	Botanical Name	Common Name	Condition		
15	Calamagrostis acutifolia 'Overdam'	Feather Reed Grass	9cm Pot		
15	Imperata cylindrical 'Red Baron'	Japanese Blood Grass	9cm Pot		
5	Echinacea purpurea	Purple Coneflower	9cm Pot		
50	Geranium macrorrhizum	Bigroot Geranium	9cm Pot		
50	Geranium psilostemon 'Gerwat'	Rozanne Geranium	9cm Pot		
15	Panicum virgatum	Switch Grass	9cm Pot		
15	Arctostaphylos Uva Ursi	Bearberry	30cm spr		

No.	Revision	Date
4	FOURTH SUBMISSION SPC	MARCH 15 2023
3	THIRD SUBMISSION SPC	NOVEMBER 30 2022
2	SECOND SUBMISSION SPC	AUGUST 24 2022
1	FIRST SUBMISSION SPC	MARCH 15 2022
0	FOR REVIEW/COORDINATION	JANUARY 2022



DESIGN/BUILDER
DOLYN CONSTRUCTION

Gino J. Aiello | landscape architect GJALA.com
 GJA Inc. Gino@GJALA.com (613) 286 5130
 110 Dabury Road Unit # 9 | Ottawa Ontario | K2Z 0C2

Project
326-332 WILBROD STREET REDVELOPMENT

Drawing
LANDSCAPE PLAN

Scale: 1:125
 Sheet Number
L1

D 07-12-22-0049