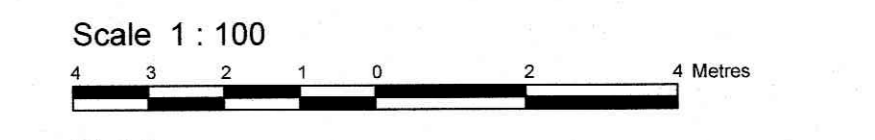


**SURVEYOR'S REAL PROPERTY REPORT**  
**PART 1** Plan of  
**PART OF LOTS 10 and 11**  
**in BLOCK B**  
**REGISTERED PLAN 8**  
**CITY OF OTTAWA**  
 Surveyed by Annis, O'Sullivan, Vollebek Ltd.



**Metric**  
 DISTANCES SHOWN ON THIS PLAN ARE IN METRES AND CAN BE CONVERTED TO FEET BY DIVIDING BY 0.3048

**Surveyor's Certificate**  
 I CERTIFY THAT:  
 1. This survey and plan are correct and in accordance with the Surveys Act and the Regulations made under them.  
 2. The survey was completed on the 8th day of August, 2021.  
 Date: Aug 6 2021  
 E. H. Herweyer  
 Ontario Land Surveyor

**PART 2**  
 THIS PLAN MUST BE READ IN CONJUNCTION WITH SURVEY REPORT DATED: AUGUST 6th, 2021

ANNIS, O'SULLIVAN, VOLLEBEK LTD. grants to KORNEIL KORNEIL, (The Client), their solicitors, mortgagees, and other related parties, permission to use original, signed, sealed copies of the Surveyor's Real Property Report in transactions involving The Client.

**Notes & Legend**

Denotes	
—□—	Survey Monument Planted
—■—	Survey Monument Found
SIB	Standard Iron Bar
SSIB	Short Standard Iron Bar
IB	Iron Bar
CP	Concrete Pin
CC	Cut Cross
Mes.	Measured
(AOG)	Annis, O'Sullivan, Vollebek Ltd.
(P1)	Registered Plan 8
(P2)	Plan 5R-8756
(P3)	(AOG) Plan September 17, 2018
(P4)	(AOG) Plan June 22, 2021
(P5)	(SG) Plan November 29, 2012
(ID)	Inst. N519747
⊕	Fire Hydrant
⊕ W	Water Valve
⊕ M+ST	Maintenance Hole (Storm Sewer)
⊕ M+S	Maintenance Hole (Sanitary)
⊕ VC	Valve Chamber (Watermain)
—ST—	Underground Storm Sewer
—S—	Underground Sanitary Sewer
—W—	Underground Water
—OW—	Overhead Wires
—G—	Underground Gas
—P—	Underground Power
□ CB	Catch Basin
□ CI	Catch Basin Inlet
□ G	Gas Meter
□ AC	Air Conditioner
⊕ UP	Utility Pole
+ AN	Anchor
CLF	Chain Link Fence
BF	Board Fence
⊕	Diameter
+ 48.00	Location of Elevations
+ 10.00	Top of Concrete Curb / Wall Elevation
C/L	Centreline
T/G	Top of Grate
Inv.	Invert
WRW	Wooden Retaining Wall
CRW	Concrete Retaining Wall
⊕	Deciduous Tree

Bearings are grid, derived from the southerly limit of Wilbrod Street shown to be N58°51'30"E on plan by (AOG) dated September 17, 2018 and are referred to the Central Meridian of MTM Zone 9 ( 76°30' West Longitude ) NAD-83 (original).  
 For bearing comparisons rotation of 0°07'00" clockwise was applied on P2.

**ELEVATION NOTES**  
 1. Elevations shown are geodetic, derived from City of Ottawa Vertical Control Monument No. C8-71 having an elevation of 70.903 metres and are referred to the CGVD25 geodetic datum.  
 2. It is the responsibility of the user of this information to verify that the job benchmark has not been altered or disturbed and that its relative elevation and description agrees with the information shown on this drawing.

**UTILITY NOTES**  
 1. This drawing cannot be accepted as acknowledging all of the utilities and it will be the responsibility of the user to contact the respective utility authorities for confirmation.  
 2. Only visible surface utilities were located.  
 3. A field location of underground plans by the pertinent utility authority is mandatory before any work involving breaking ground, probing, excavating etc.  
 4. Underground services and Inverts are taken from City of Ottawa Engineering Plans D-14-29, D-14-30 and Plan 2133 Sheet 1 of 4.

