



---

protected under the City of Ottawa's Tree Protection By

---





Con't

		(VP→E)		

---

---

of Ontario's Endangered Species Act (2007) and so is protected from harm.

---

---

reader's attention is directed.

Andrew Boyd









---

---

---





revise the recommendations within this report. Recognition of changes to a tree's condition requires

---

to be on the client's property. A recent survey prepared by a Licensed Ontario Land Surveyor

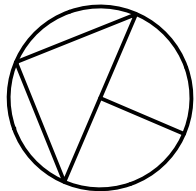
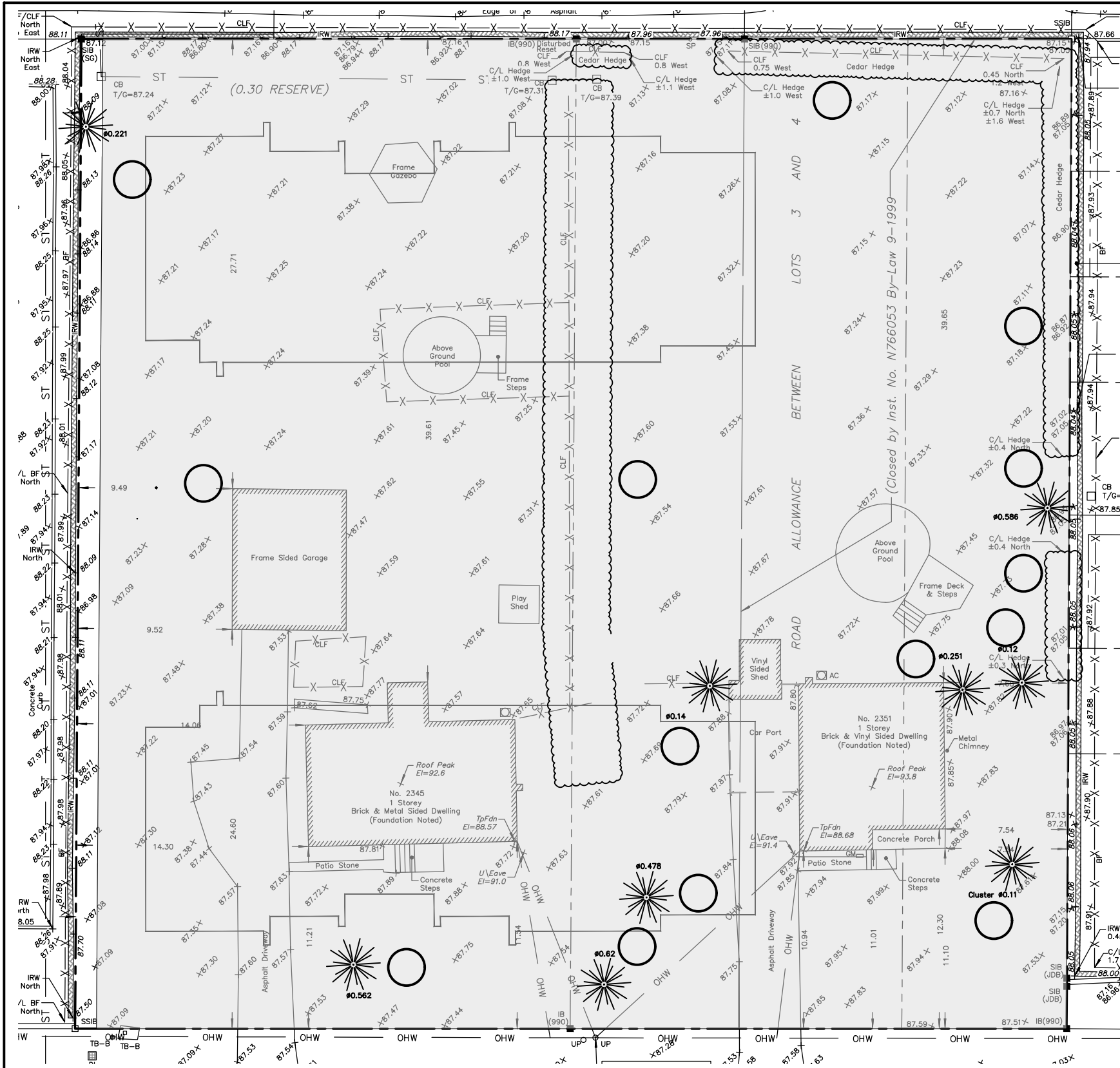
---

---

---

cant's





CRZ = DBH X 10CM. CRZ IS TO BE MEASURED FROM THE OUTSIDE EDGE OF THE TREE BASE

TREE PROTECTION SIGNAGE AS PER CITY STANDARD

GRADE

1.2M MIN. HIGH TREE PROTECTION FENCING AS PER REQUIREMENT # 3

POSTS TO BE SPACED AT 2.4M O/C MAX AS PER REQUIREMENT # 3

SOIL AND ROOT DISTURBANCE NOT PERMITTED

ACCESSIBLE FORMATS AND COMMUNICATION SUPPORTS ARE AVAILABLE, UPON REQUEST

**TREE PROTECTION REQUIREMENTS:**

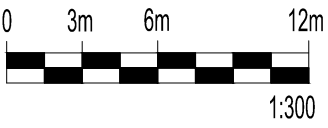
- PRIOR TO ANY WORK ACTIVITY WITHIN THE CRITICAL ROOT ZONE (CRZ = 10 X DIAMETER) OF A TREE, TREE PROTECTION FENCING MUST BE INSTALLED SURROUNDING THE CRITICAL ROOT ZONE, AND REMAIN IN PLACE UNTIL THE WORK IS COMPLETE.
- UNLESS PLANS ARE APPROVED BY CITY FORESTRY STAFF, FOR WORK WITHIN THE CRZ:
  - DO NOT PLACE ANY MATERIAL OR EQUIPMENT - INCLUDING OUTHOUSES;
  - DO NOT ATTACH ANY SIGNS, NOTICES OR POSTERS TO ANY TREE;
  - DO NOT RAISE OR LOWER THE EXISTING GRADE;
  - TUNNEL OR BORE WHEN DIGGING;
  - DO NOT DAMAGE THE ROOT SYSTEM, TRUNK, OR BRANCHES OR ANY TREE;
  - ENSURE THAT EXHAUST FUMES FROM ALL EQUIPMENT ARE NOT DIRECTED TOWARD ANY TREE CANOPY.
  - DO NOT EXTEND HARD SURFACE OR SIGNIFICANTLY CHANGE LANDSCAPING
- TREE PROTECTION FENCING MUST BE AT LEAST 1.2M IN HEIGHT, AND CONSTRUCTED OF RIGID OR FRAMED MATERIALS (E.G. MODULOC - STEEL, PLYWOOD HOARDING, OR SNOW FENCE ON A 2"x4" WOOD FRAME) WITH POSTS 2.4M APART, SUCH THAT THE FENCE LOCATION CANNOT BE ALTERED. ALL SUPPORTS AND BRACING MUST BE PLACED OUTSIDE OF THE CRZ, AND INSTALLATION MUST MINIMISE DAMAGE TO EXISTING ROOTS. (SEE DETAIL)
- THE LOCATION OF THE TREE PROTECTION FENCING MUST BE DETERMINED BY AN ARBORIST AND DETAILED ON ANY ASSOCIATED PLANS FOR THE SITE (E.G. TREE CONSERVATION REPORT, TREE DISCLOSURE REPORT, ETC). THE PLAN AND CONSTRUCTED FENCING MUST BE APPROVED BY CITY FORESTRY STAFF PRIOR TO THE COMMENCEMENT OF WORK.
- IF THE FENCED TREE PROTECTION AREA MUST BE REDUCED TO FACILITATE CONSTRUCTION, MITIGATION MEASURES MUST BE PRESCRIBED BY AN ARBORIST AND APPROVED BY CITY FORESTRY STAFF. THESE MAY INCLUDE THE PLACEMENT OF PLYWOOD, WOOD CHIPS, OR STEEL PLATING OVER THE ROOTS FOR PROTECTION OR THE PROPER PRUNING AND CARE OF ROOTS WHERE ENCOUNTERED.

**BY-LAWS**  
ALL CITY-OWNED TREES ARE PROTECTED UNDER THE MUNICIPAL TREES AND NATURAL AREAS PROTECTION BY-LAW (2006-279). WITHIN THE URBAN AREA, PRIVATELY-OWNED TREES GREATER THAN 50CM DIAMETER ON LOTS 1HA IN SIZE OR LESS, AND TREES GREATER THAN 10CM DIAMETER ON LOTS >1HA, ARE PROTECTED UNDER THE URBAN TREE CONSERVATION BY-LAW (2009-200).

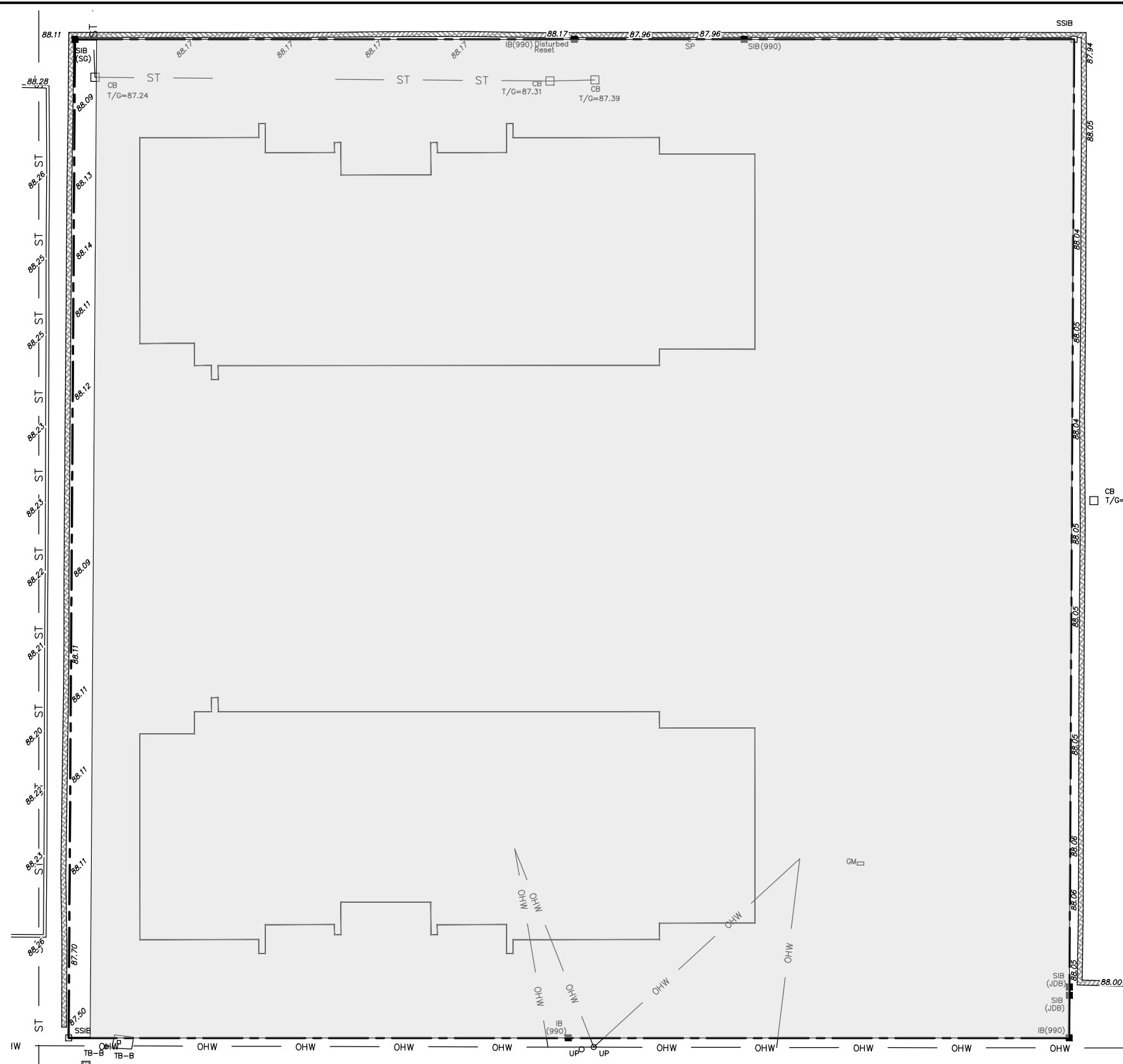
**TREE PROTECTION SPECIFICATION**

TO BE IMPLEMENTED FOR RETAINED TREES, BOTH ON SITE AND ON ADJACENT SITES, PRIOR TO ANY TREE REMOVAL OR SITE WORKS AND MAINTAINED FOR THE DURATION OF WORK ACTIVITIES ON SITE.

SCALE:	NTS
DATE:	MAY 2019
DRAWING NO.:	1 of 1



**Ruhland & Associates Ltd**  
 200-1750 Courtwood Crescent, Ottawa, Ontario K2C 2B5  
 P (613) 224-4744 x 222 F (613) 224-1931 info@rala.ca www.rala.ca



**Ruhland & Associates Ltd**  
 200-1750 Courtwood Crescent, Ottawa, Ontario K2C 2B5  
 P (613) 224-4744 x 222 F (613) 224-1931 info@rala.ca www.rala.ca
