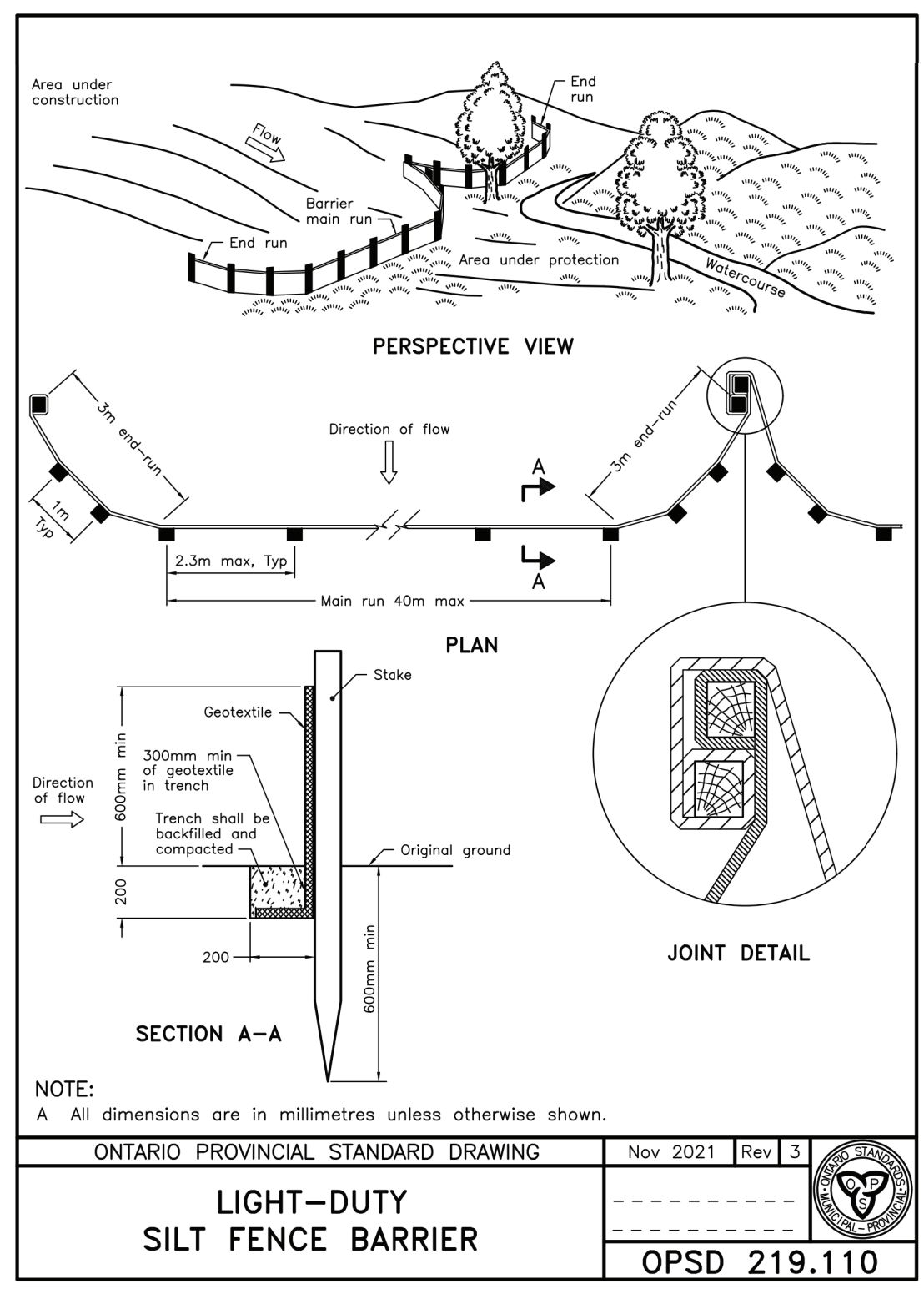


TITLEBLOCK 24383 VERT ENG 3.0
 PRINT DATE: 2022/04/07 (PAPER SIZE: ISO A4 (210.0 x 297.00 MM))
 PATH: Z:\Cma-C10\Dir_P\Projects\A01000-A01699\A01046_403 Richmond - Servicing Reports\04040_Civil\02_Sediment&Erosion.dwg / LAYOUT: C002



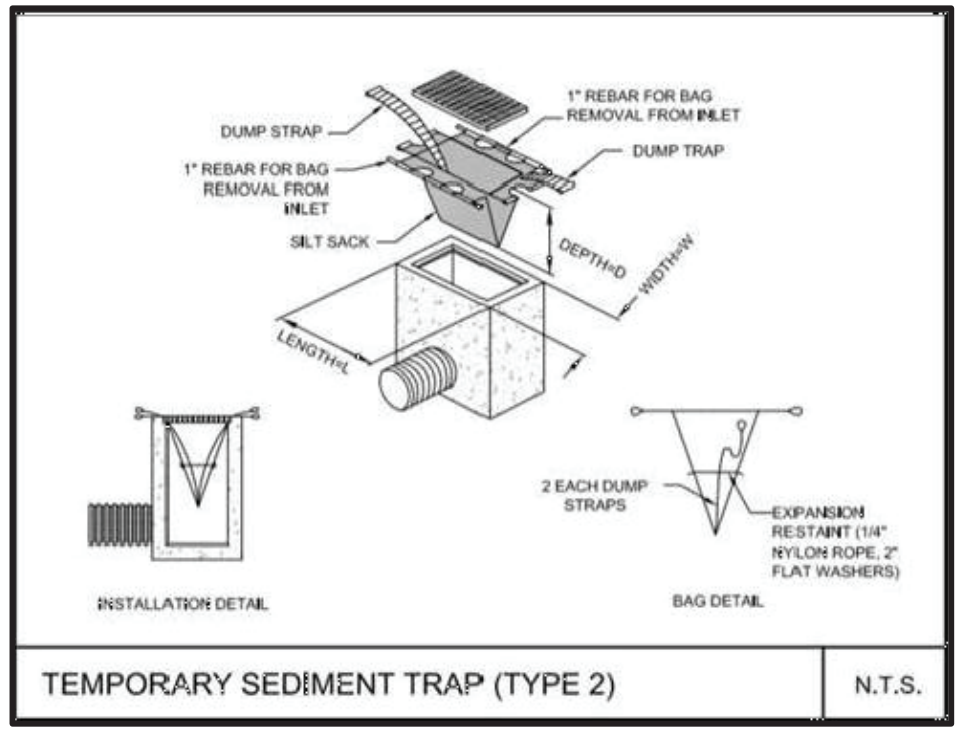
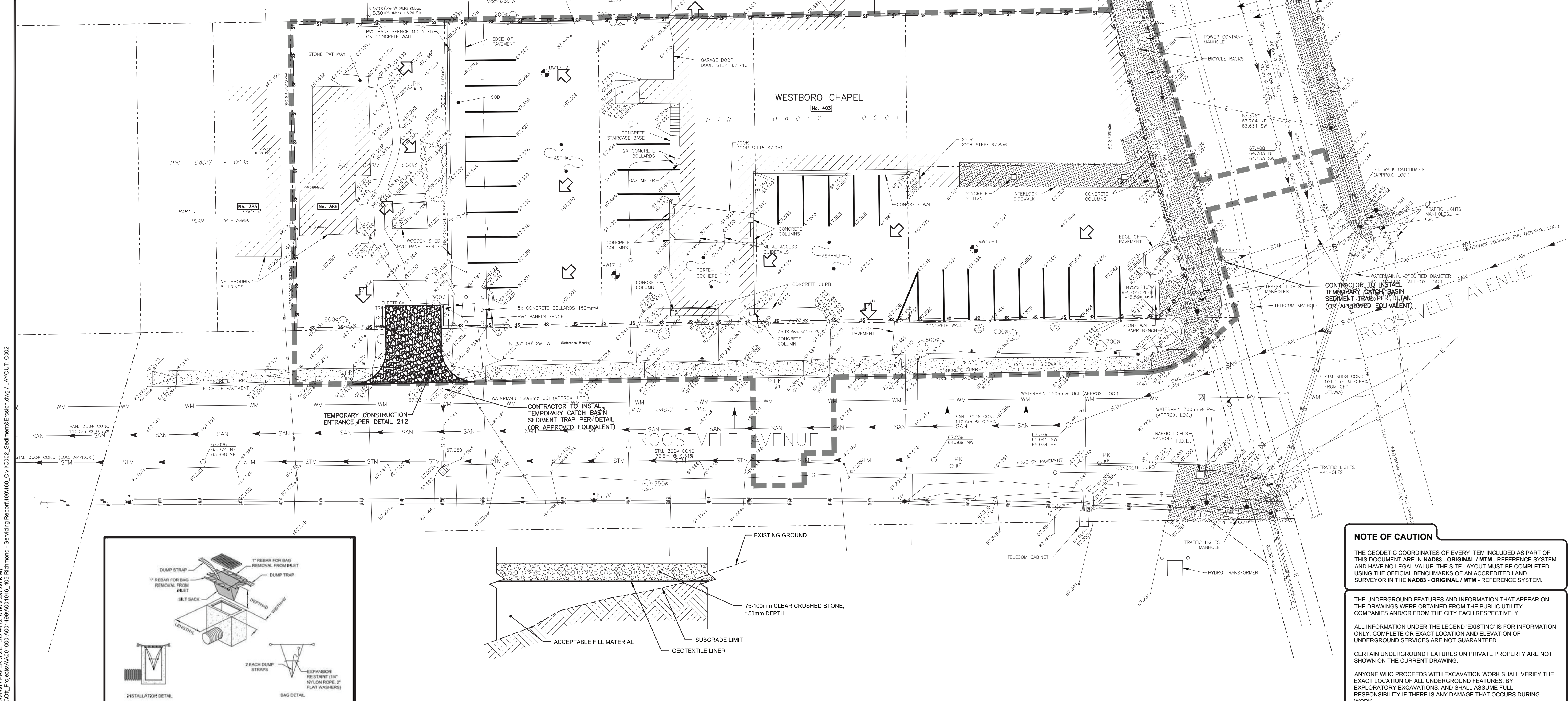
EXISTING

- WM WATERMAIN
- SAN SANITARY SEWER
- STM STORM SEWER
- D DRAIN
- G GAS LINE (APPROX. LOC.)
- T UNDERGROUND TELEPHONE (APPROX. LOC.)
- U UNDERGROUND CABLE (APPROX. LOC.)
- CA LOT LINE
- E UNDERGROUND ELECTRICITY (APPROX. LOC.)
- OVERHEAD WIRES
- RIGHT-OF-WAY LIMITS
- EASEMENT

PROPOSED

- TOP OF SLOPE
- DITCH CENTER
- BOTTOM OF SLOPE
- WOOD AREA
- GRADE CROSSING
- FLAGPOLE
- CATCHBASIN
- MANHOLE/CATCHBASIN
- MANHOLE
- FIRE HYDRANT
- VALVE
- REDUCER
- TEE
- VALVE CHAMBER
- PRIVATE UTILITIES (WATERMAIN)
- EXTERIOR WATER FAUCET
- SLUICEWAY
- NATURAL GAS VALVE
- SIGN
- STOP SIGN
- TRAFFIC LIGHT
- ELECTRICITY POLE
- TELEPHONE POLE
- ELECT.-TEL-STREET LIGHT POLE
- ELECT.-TEL-TRANSFORMER POLE
- PRIVATE STREET LIGHT
- ELECTRICITY MANHOLE
- TELEPHONE MANHOLE
- SURVEY STATION
- ELEVATION
- BOREHOLE (LOC. APPROX.)
- GROUND ELEVATION (BEDROCK ELEVATION)
- SILT FENCE PER OPSD 219.110
- OVERLAND FLOW
- TEMPORARY CONSTRUCTION ENTRANCE
- WORK LIMIT

1:200 0 2 4 8 12m



NOTE OF CAUTION

THE GEODETIC COORDINATES OF EVERY ITEM INCLUDED AS PART OF THIS DOCUMENT ARE IN NAD83 - ORIGINAL / MTM - REFERENCE SYSTEM AND HAVE NO LEGAL VALUE. THE SITE LAYOUT MUST BE COMPLETED USING THE OFFICIAL BENCHMARKS OF AN ACCREDITED LAND SURVEYOR IN THE NAD83 - ORIGINAL / MTM - REFERENCE SYSTEM.

THE UNDERGROUND FEATURES AND INFORMATION THAT APPEAR ON THE DRAWINGS WERE OBTAINED FROM THE PUBLIC UTILITY COMPANIES AND/OR FROM THE CITY EACH RESPECTIVELY.

ALL INFORMATION UNDER THE LEGEND 'EXISTING' IS FOR INFORMATION ONLY. COMPLETE OR EXACT LOCATION AND ELEVATION OF UNDERGROUND SERVICES ARE NOT GUARANTEED.

CERTAIN UNDERGROUND FEATURES ON PRIVATE PROPERTY ARE NOT SHOWN ON THE CURRENT DRAWING.

ANYONE WHO PROCEEDS WITH EXCAVATION WORK SHALL VERIFY THE EXACT LOCATION OF ALL UNDERGROUND FEATURES, BY EXPLORATORY EXCAVATIONS, AND SHALL ASSUME FULL RESPONSIBILITY IF THERE IS ANY DAMAGE THAT OCCURS DURING WORK.

THE CONTRACTOR WILL HAVE THE RESPONSIBILITY AND THE OBLIGATION TO VALIDATE, BY EXPLORATORY EXCAVATION, THE SIZE OF THE PUBLIC UTILITIES UNDERGROUND SERVICES AND TO WARN THE ENGINEER OF ANY CONFLICT WITH THE PROJECTED WORK.

No.	Date	Description	By
1	22/04/07	ISSUED FOR SITEPLAN CONTROL	T.K

DESIGNED BY: **T.G. KENNEDY**
 100173201
 APRIL 8, 2022
 PROVINCE OF ONTARIO

APPROVED BY:

CIMA+

The Hazelton
Westboro

PROJECT NAME:
403 RICHMOND ROAD & 389 ROOSEVELT AVENUE

SHEET TITLE:
SEDIMENT AND EROSION CONTROL PLAN

DISCIPLINE:
CIVIL

DRAWER:
 S.C. POGGIOLI

DESIGNER:
 G. JOSEPH

APPROVER:
 T. KENNEDY

PROJECT No.:
 A001046

SCALE:
 1:200

DATE:
 2022/04/07

APPROVER:
 T. KENNEDY

DRAWING No.:
C002

2 of 12