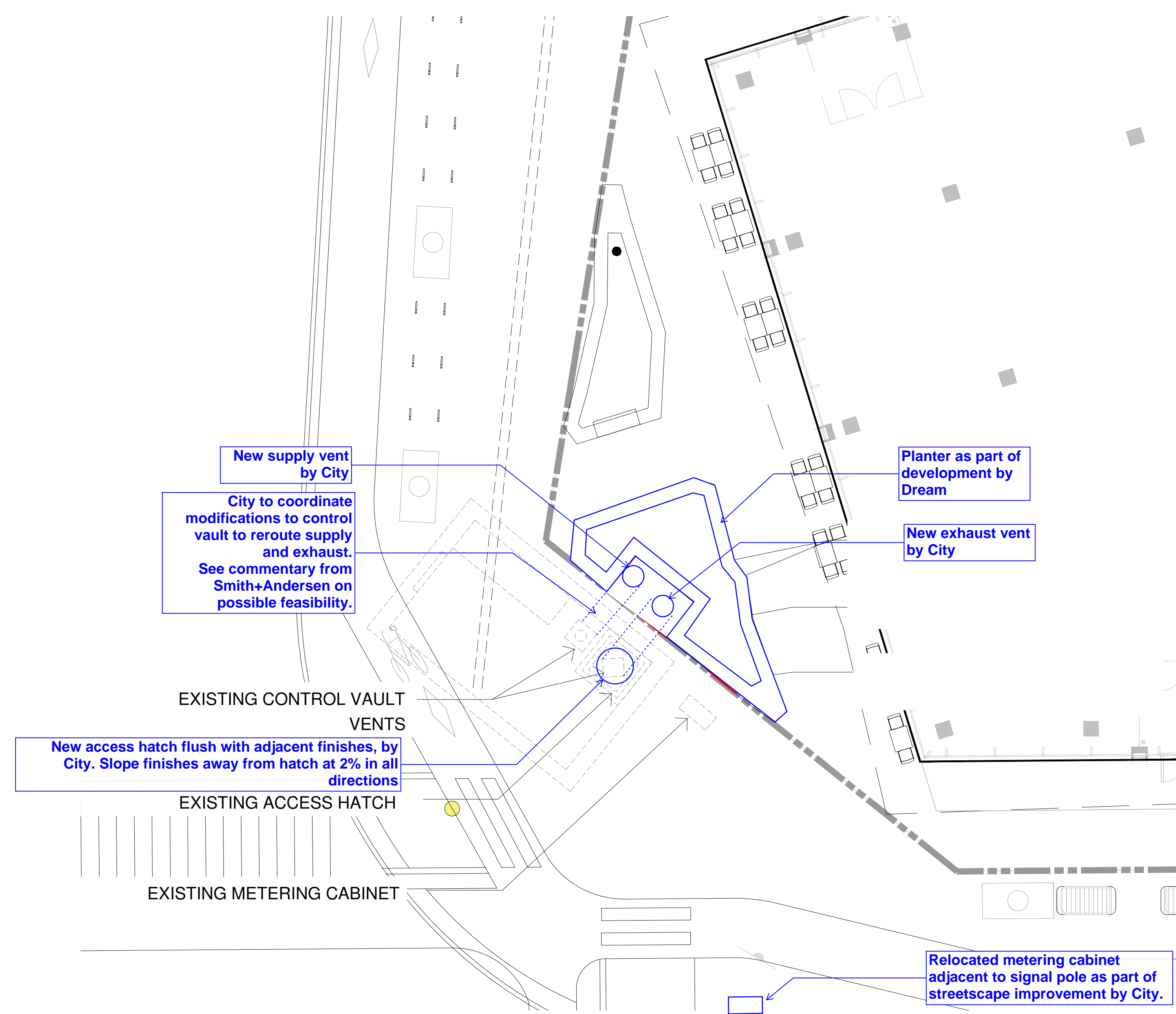
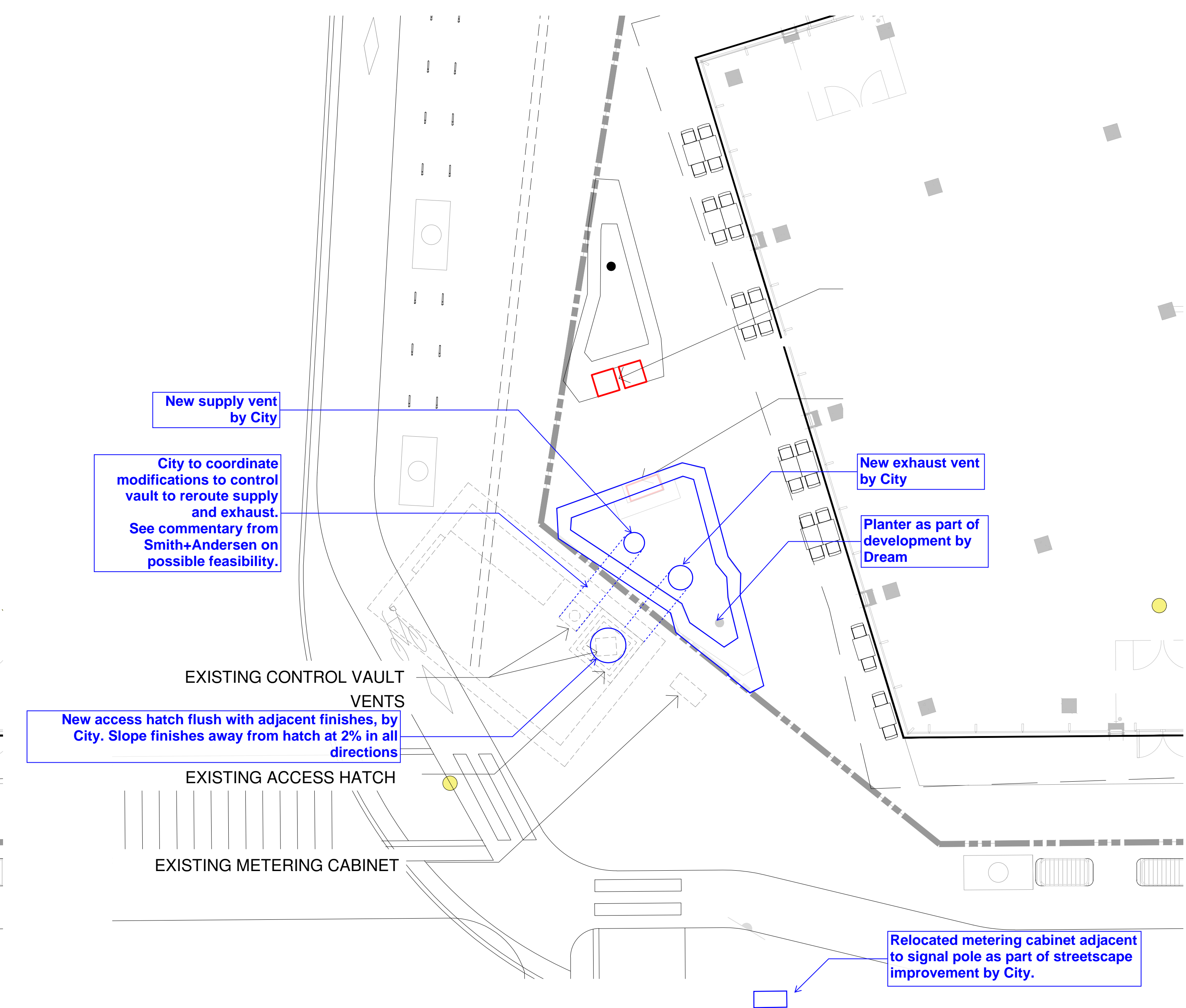


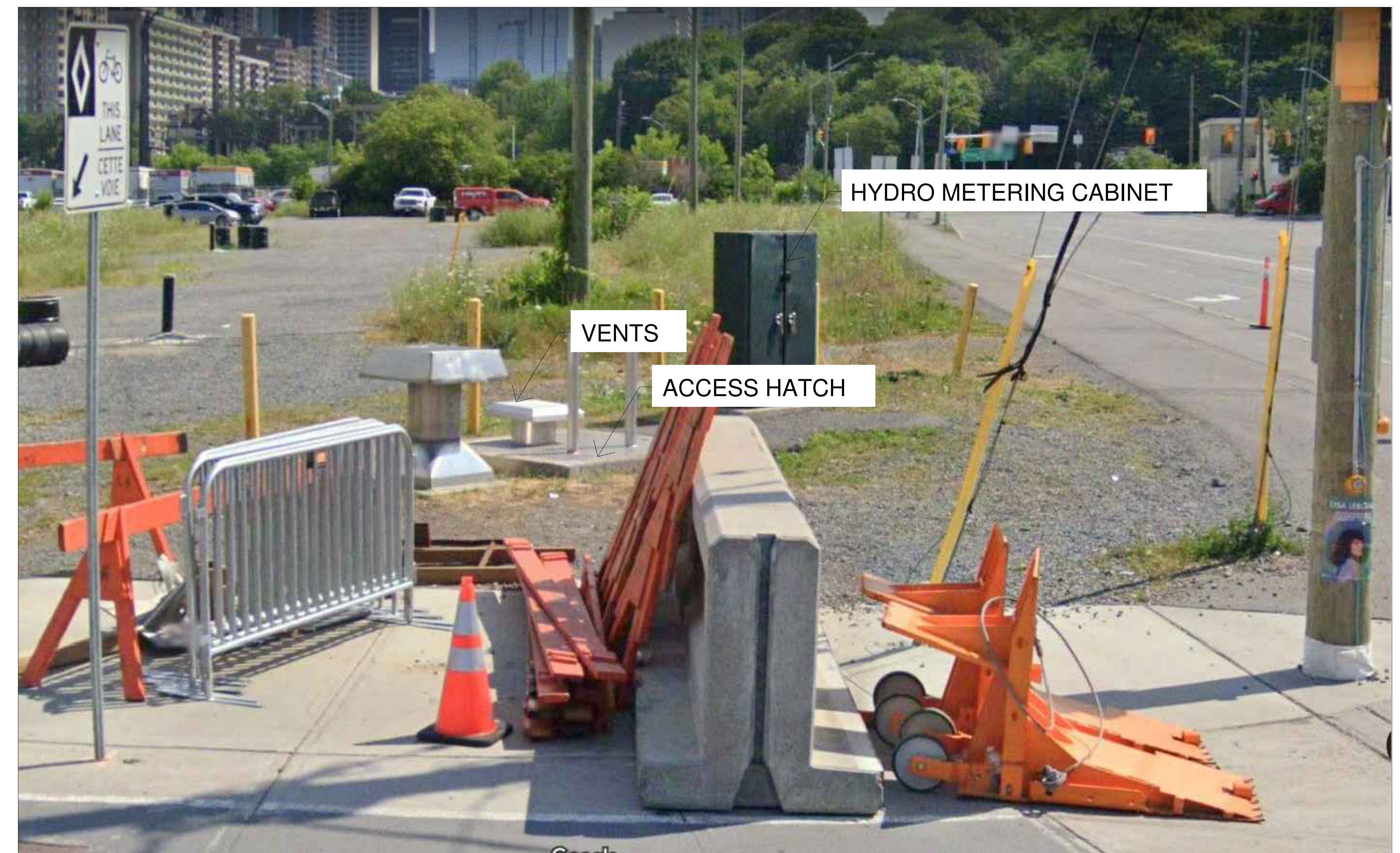
OPTION1: PLANTER TO BE PULLED OUTSIDE PL TO FRAME VENTS AND CABINET



OPTION2: VENTS AND CABINET TO BE TUCKED IN PLANTER



OPTION3: VENTS AND CABINET TO BE RELOCATED AND BLENDED INTO TWO RAISED PLANTED AREAS



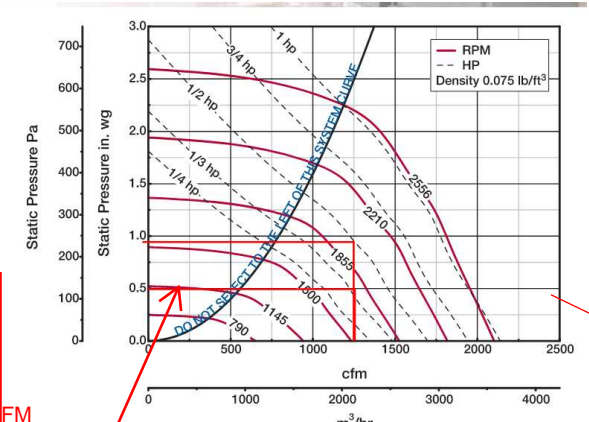
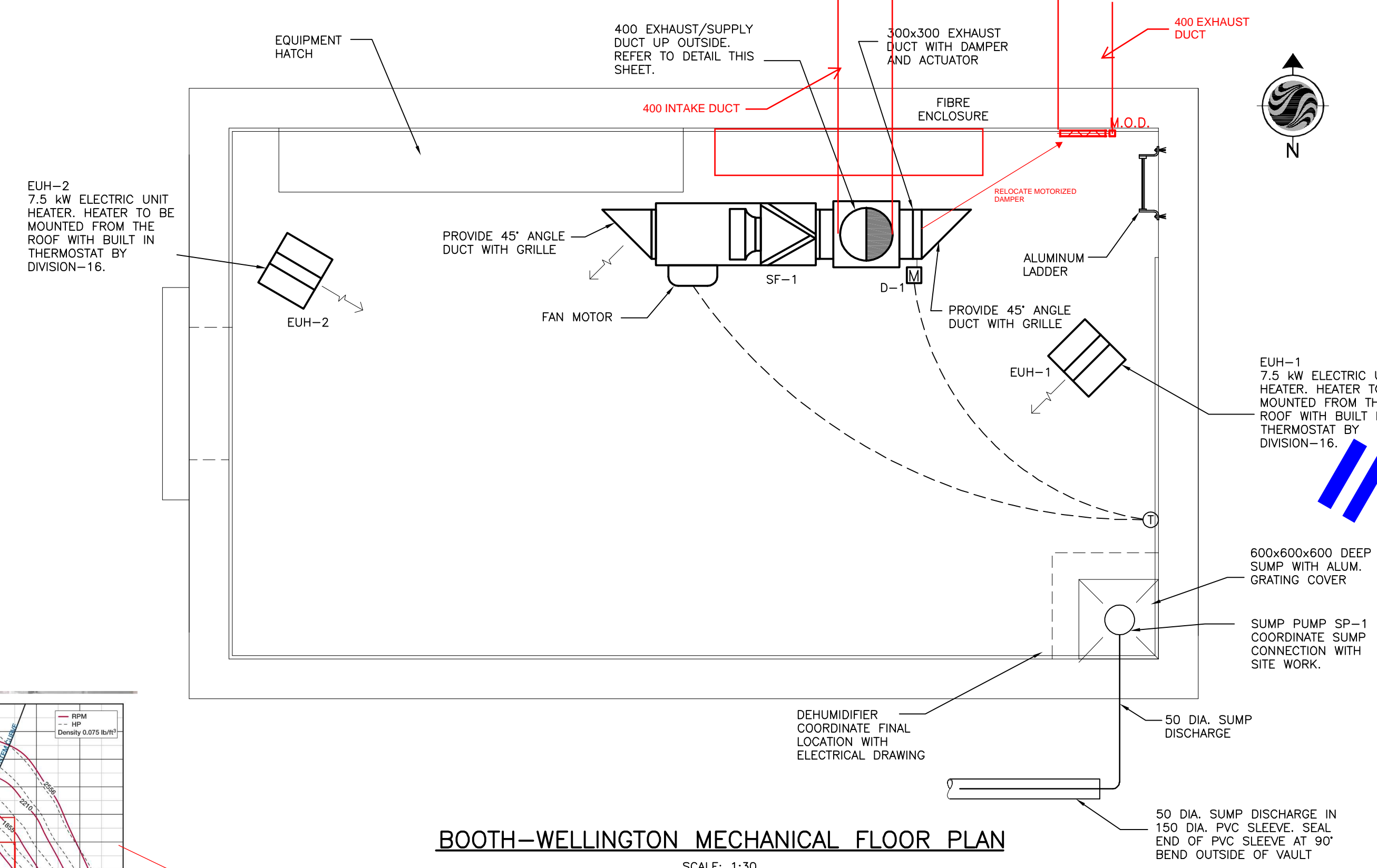
EXISTING CONDITIONS AT BOOTH ST AND ALBERT ST

**LEBRETON
LIBRARY
PARCEL
BOOTH
STREET
VAULT
2022-02-03**

E	AS BUILT	11.03.01
D	ISSUED FOR CONSTRUCTION	09.08.21
C	ISSUED FOR TENDER	09.04.09
B	ISSUED FOR 90% REVIEW	09.01.30
A	ISSUED FOR 60% REVIEW	08.11.21
No.	Revision	Date

DRAWING TITLE:
**REGULATOR CHAMBER
UPGRADES
BOOTH-WELLINGTON REGULATOR
CONTRACT No.ISB08-2017**

**BOOTH-WELLINGTON REGULATOR
CONTROL VAULT
MECHANICAL PLAN, DETAIL
& SCHEDULE**



EXHAUST FAN SCHEDULE

TAG	DESCRIPTION	LOCATION	MANUFACTURER	MODEL #	VOLUME (CFM)	S.P. ("WC)	ELECTRICAL (V/C/P)	MOTOR HP	MOTOR RPM	FLA (A)	REMARKS
SF-1	BELT DRIVE CENTRIFUGAL INLINE FAN	BOOTH-WELLINGTON VAULT	GREENHECK	BSQ-100-5	1250	0.5	115/60/1	1/2	1,429	9.5	CONTROLLED BY THERMOSTAT PROVIDED BY DIVISION-15.

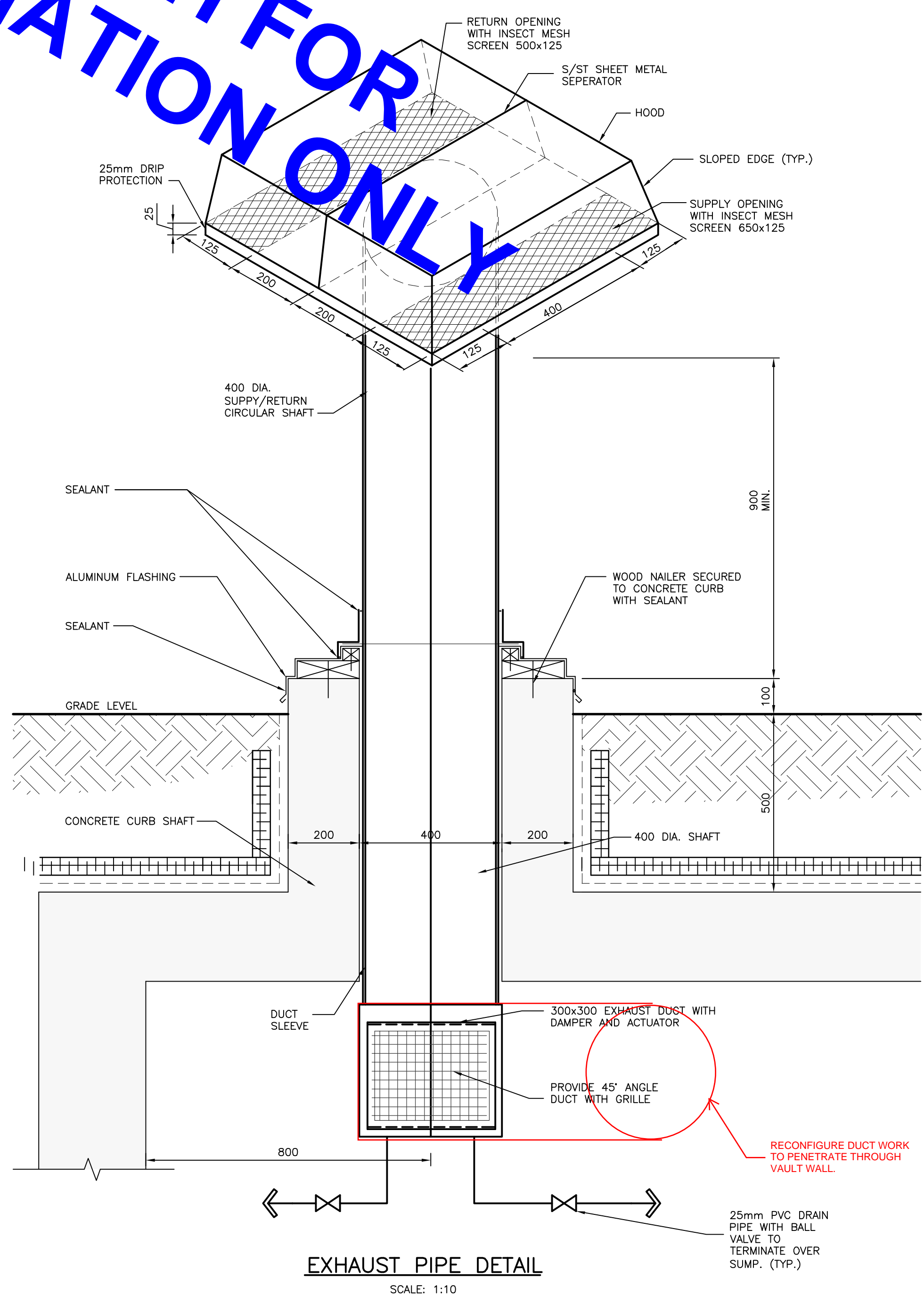
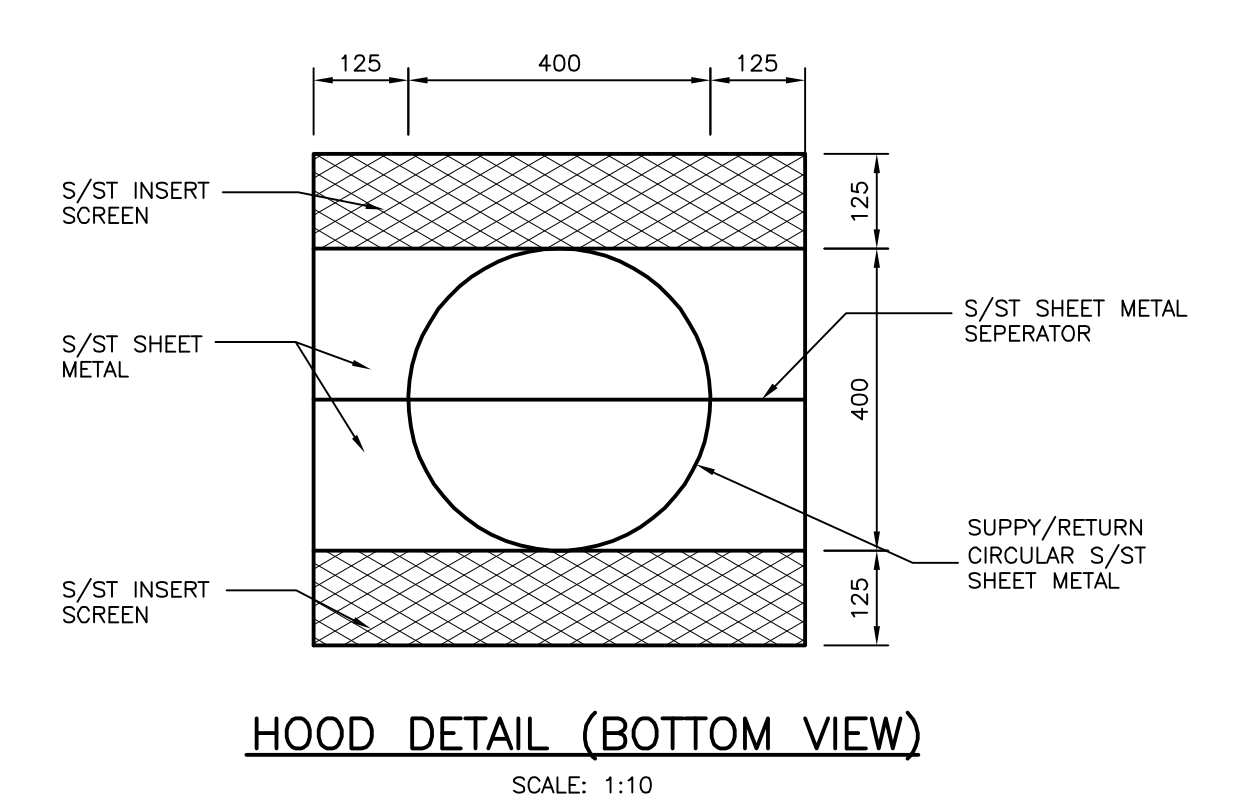
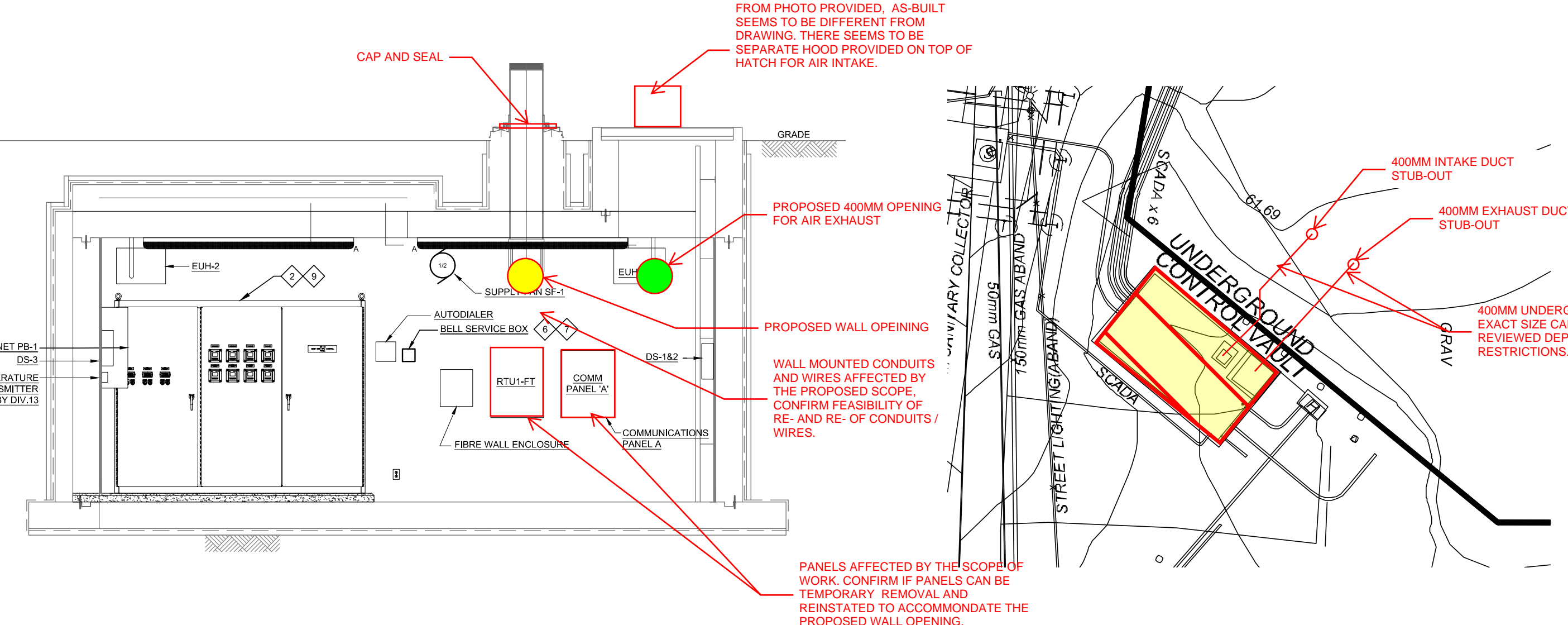
ELECTRIC UNIT HEATER

TAG	DESCRIPTION	LOCATION	MANUFACTURER	MODEL #	CAPACITY (kW)	ELECTRICAL (V/PH/Hz)	REMARKS
EUH-1	ELECTRIC UNIT HEATER	BOOTH-WELLINGTON VAULT	CALORITECH	GE-072	7.5	600/3/60	BUILT-IN THERMOSTAT
EUH-2	ELECTRIC UNIT HEATER	BOOTH-WELLINGTON VAULT	CALORITECH	GE-072	7.5	600/3/60	BUILT-IN THERMOSTAT

SUMP PUMP SCHEDULE

TAG	DESCRIPTION	LOCATION	MANUFACTURER	MODEL #	FLOWRATE (GPM)	SHUTOFF HEAD (FT.)	ELECTRICAL (V/C/P)	MOTOR HP	REMARKS
SP-1	SUMP PUMP	BOOTH-WELLINGTON VAULT	ITT FLYGT	READY 8	85	50	115/60/1	1.1	SEE NOTE 1

SUMP PUMP NOTES:
1. FURNISHED WITH CONTROL PANEL AND ALL NECESSARY ACCESSORIES. PROVIDE CHECK VALVE AT PUMP DISCHARGE. CONTROL PANEL TO HAVE UPS (1 HR. UNINTERRUPTIBLE POWER SUPPLY) BATTERY BACK-UP.



**SKETCH FOR
INFORMATION ONLY**