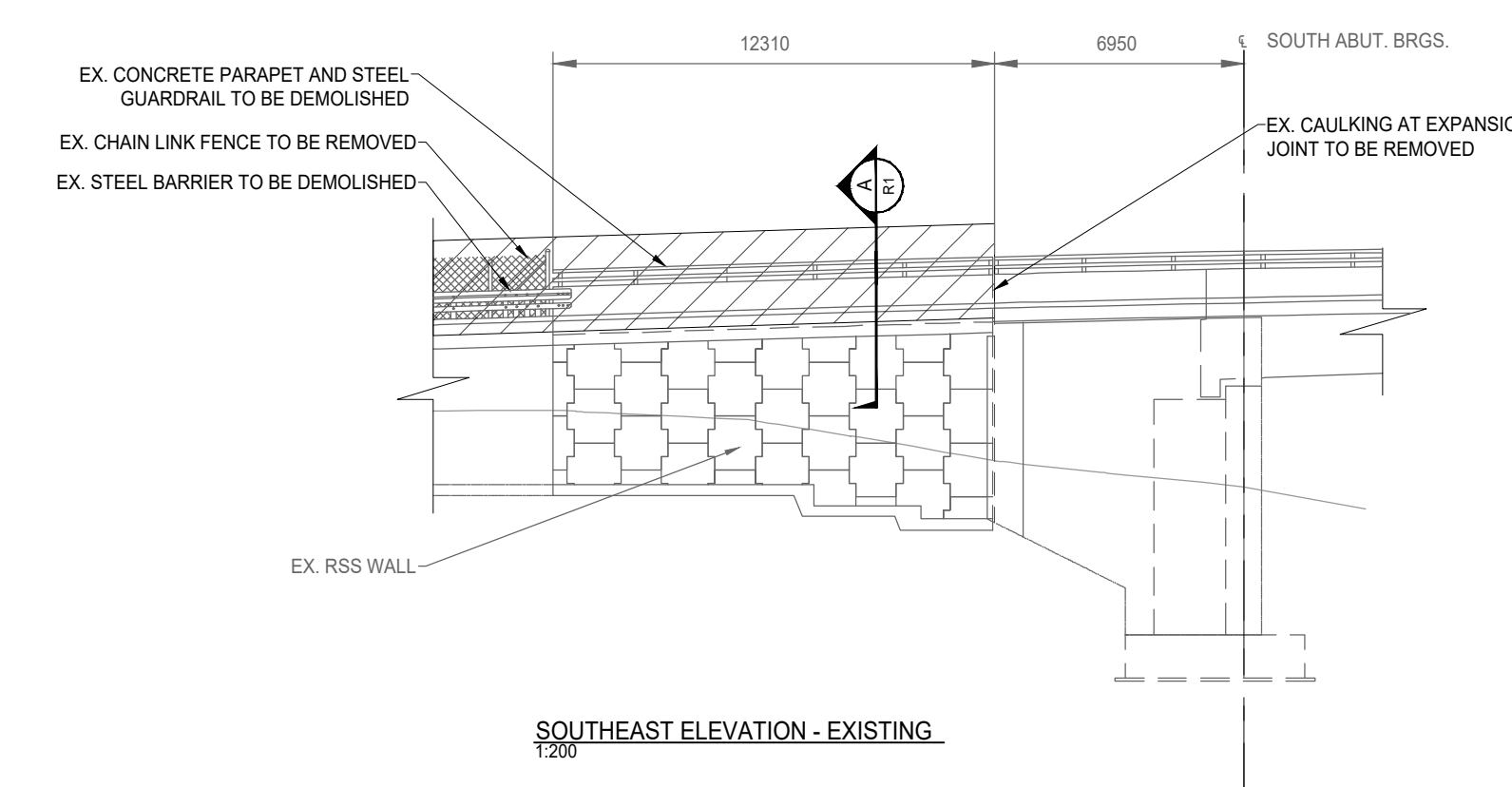
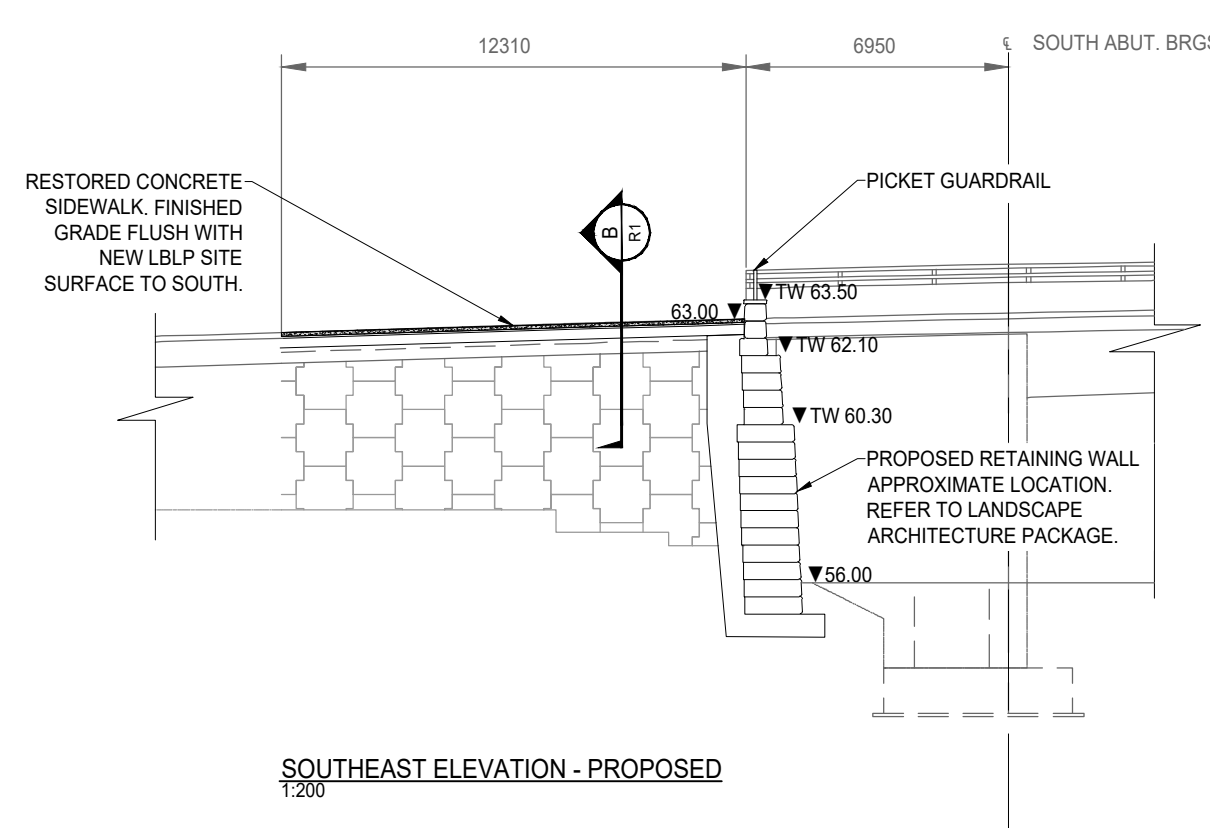


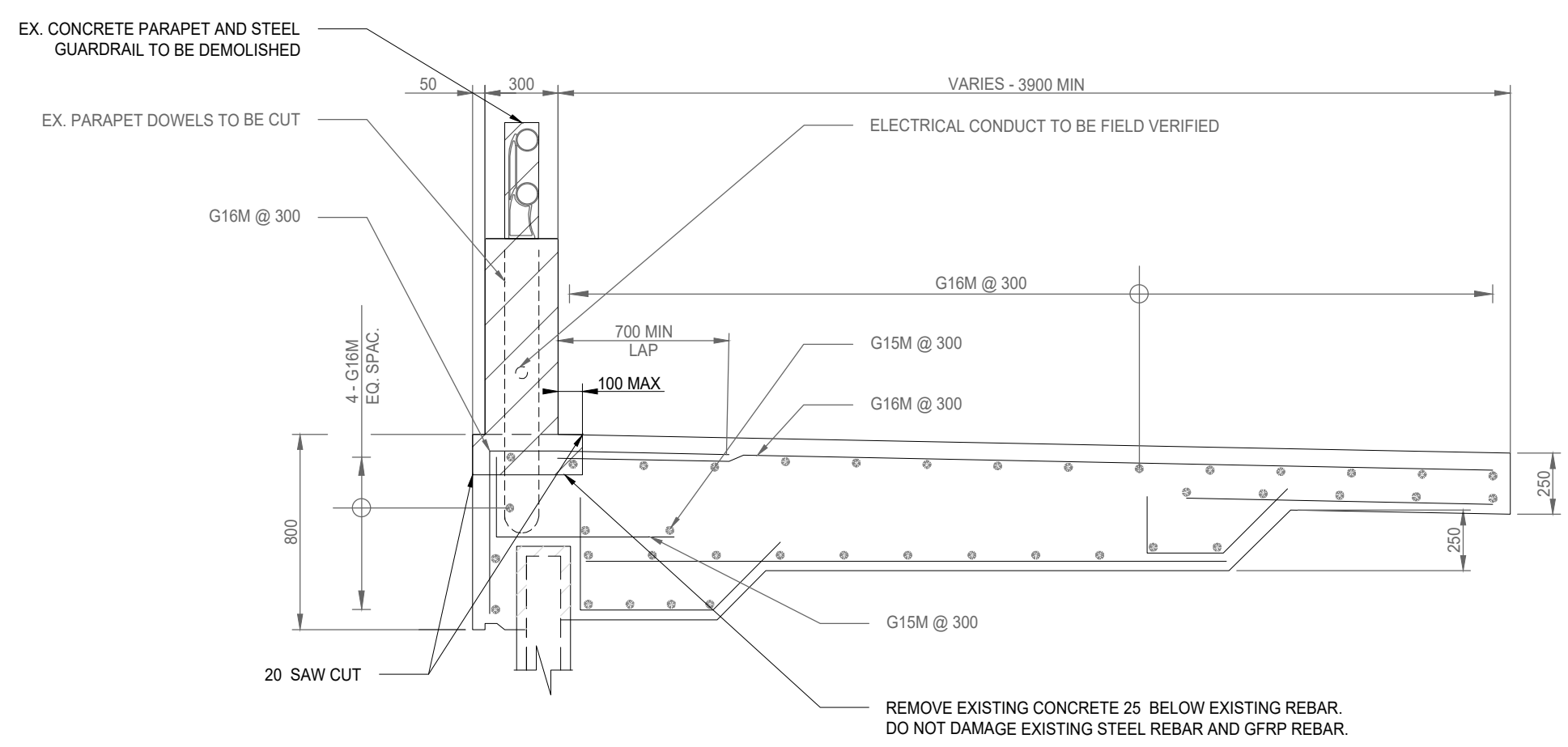
PLAN - EXISTING
1200



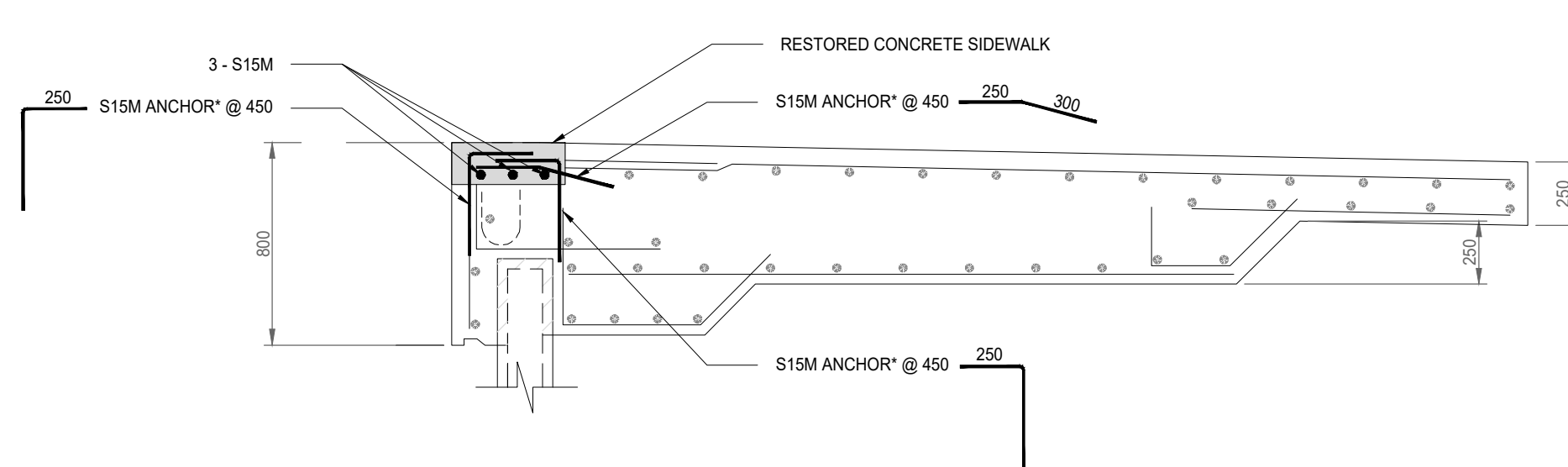
SOUTHEAST ELEVATION - EXISTING
1200



SOUTHEAST ELEVATION - PROPOSED
1200



SECTION - EXISTING
125



SECTION - PROPOSED
125

LEGEND:

	DEMOLITION
	NEW CONCRETE

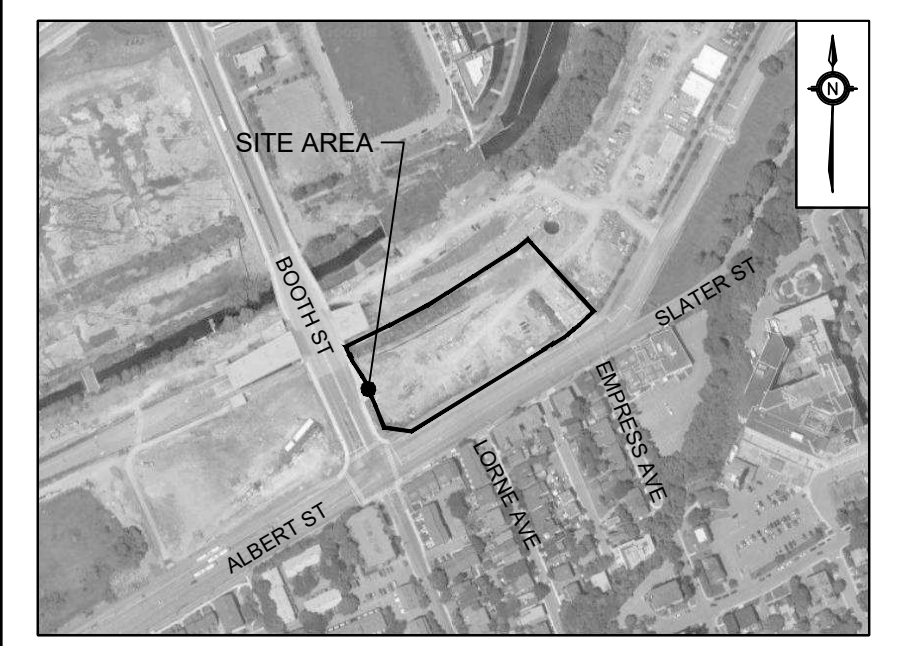
GENERAL NOTES:

- DESIGN CODE**
CSA-S6-19
- UNITS**
DIMENSIONS ARE IN mm.
- SPECIFICATIONS**
ONTARIO PROVINCIAL STANDARD SPECIFICATION:
904 - CONCRETE STRUCTURE
905 - STEEL REINFORCEMENT FOR CONCRETE
919 - FORMWORK AND FLASEWORK
929 - ABRASIVE BLAST CLEANING - CONCRETE CONSTRUCTION
930 - STRUCTURAL REHABILITATION - CONCRETE PATCHES AND OVERLAYS
1002 - AGGREGATES - CONCRETE
1301 - CEMENTING MATERIALS
1302 - WATER
1303 - ADMIXTURES FOR CONCRETE
1440 - STEEL REINFORCEMENT FOR CONCRETE

CITY OF OTTAWA SPECIAL PROVISION:
F-9040 CONCRETE STRUCTURES
F-9043 CEMENTING MATERIALS
F-9045 CONCRETE - MATERIALS AND PRODUCTION
- CLASS OF CONCRETE**
CLASS OF CONCRETE SHALL BE IN ACCORDANCE WITH CSA A23.1.
COMPONENT 28 DAYS COMPRESSIVE STRENGTH EXPOSURE CLASS
SIDEWALK 35 MPa C-1

THE RAPID CHLORINE PERMEABILITY OF CONCRETE SHALL NOT EXCEED 1000 COULOMBS AT 90 DAYS.
- CLEAR COVER TO REINFORCEMENT BAR**
SIDEWALK 70mm ±20
- REINFORCEMENT BAR**
EXISTING BAR MARKS WITH THE PREFIX 'G' DENOTE GFRP BAR.

NEW BAR MARKS WITH THE PREFIX 'S' DENOTE STAINLESS STEEL BAR TYPE 316LN OR DUPLEX 2205 (420MPa).
- CONSTRUCTION NOTES**
ALL MATERIALS SHALL BE IN ACCORDANCE WITH MTO DESIGNATED SOURCES FOR MATERIALS.
- REFERENCE DRAWINGS**
AS-BUILD DRAWINGS REM-27-1-BSBR-DRD.



KEY PLAN
N.T.S.
LEGEND
SEE ABBREVIATIONS BELOW

BENCHMARK: ELEVATIONS ARE GEODETIC, IN METRES, AND DERIVED FROM THE CAN-NET VRS NETWORK MONUMENT: OTTAWA
ELEVATION=95.230
BEARING: BEARINGS ARE GRID. DERIVED FROM THE CAN-NET VRS NETWORK OBSERVATIONS ON NCC HORZ CONTROL MONUMENTS 19773035 & 19680191, CENTRAL MERIDIAN, 76°30' W LONGITUDE MTM ZONE 9
SITE PLAN: KPMG, PERKINS & WILL
SURVEY: STANTEC GEOMATICS LTD., 220324

5			
4			
3			
2	ISSUED FOR REVIEW	230210	E.C.B.
1	ISSUED FOR REVIEW	221205	E.C.B.
NO.	ISSUE	DATE	BY

DRAWING NOTES NOT FOR CONSTRUCTION

- THIS DRAWING IS THE EXCLUSIVE PROPERTY OF THE MUNICIPAL INFRASTRUCTURE GROUP LTD (TMIG). THE REPRODUCTION OF ANY PART WITHOUT PRIOR WRITTEN CONSENT FROM TMIG IS STRICTLY PROHIBITED.
- THIS DRAWING IS TO BE READ AND UNDERSTOOD IN CONJUNCTION WITH ALL OTHER DRAWINGS AND DOCUMENTS APPLICABLE TO THIS PROJECT.
- THIS DRAWING IS NOT TO BE ISSUED FOR CONSTRUCTION UNTIL ALL REQUIRED PERMITS HAVE BEEN ISSUED.
- THE CONTRACTOR SHALL VERIFY ALL DIMENSIONS, ELEVATIONS, INVERTS AND DATA ON SITE AND REPORT ANY DISCREPANCIES OR OMISSIONS TO TMIG 48 HOURS PRIOR TO ANY CONSTRUCTION.

ABBREVIATIONS

GENERAL:	TW = TOP OF WALL	HDPE = HIGH DENSITY POLYETHYLENE
PROP = PROPOSED	BW = BOTTOM OF WALL	CONC = CONCRETE
EX = EXISTING	SERVICING:	STM = STORM
	STM = STORM	CB = CATCH BASIN
	SAN = SANITARY	DCB = DOUBLE CATCH BASIN
	WAT = WATER	AD = AREA DRAIN
ELEVATIONS:	PVC = POLYVINYL CHLORIDE	TD = TRENCH DRAIN
TC = TOP OF CURB		
BC = BOTTOM OF CURB		



SOUTHEAST CONCRETE PARAPET REMOVAL

LEBRETON LIBRARY PARCEL
DREAM

SCALE: NTS	PROJECT #
DATE: APRIL 2022	10399
DRAWN BY: A.N.	DRAWING #
DESIGNED BY: E.C.B.	R1
CHECKED BY: B.W.	