

CONSULTANTS

- civil
TMIG
8800 Dufferin St., Suite 200, Vaughan, ON L4K 0C5
STRUCTURAL
- RJC Engineers
1545 Carlin Ave., Suite 304, Ottawa, ON K1Z 8P9
- Smith+Anderson
1600 Carling Ave., Suite 530, Ottawa, ON K1Z 1G3
LANDSCAPING
- PFS Studio
1777 W 3rd Ave., Vancouver, BC V5J 1K1
- CONSULTANT
Two Row Architect
1804 6th Line, Orillia, ON N0A 1M0
- CONTRACTOR
EllisDon
2680 Queensview Dr., Ottawa, ON K2B 6J9

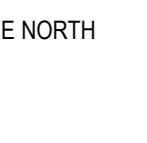
STAMP

PROJECT

**LEBRETON LIBRARY
PARCEL**
665 Albert St
Ottawa, ON
Canada



DREAM
30 Adelaide St. E., Suite 301,
Toronto, ON M5C 3H1
KEYPLAN



ISSUE CHART

NO.	ISSUE	DATE
3	ISSUED FOR 100% SD	2022-06-10
4	ISSUED FOR 66% DD	2022-06-19
5	ISSUED FOR 100% DD	2022-09-30
7	ISSUED FOR NCC 99% PLUGITA	2022-11-09

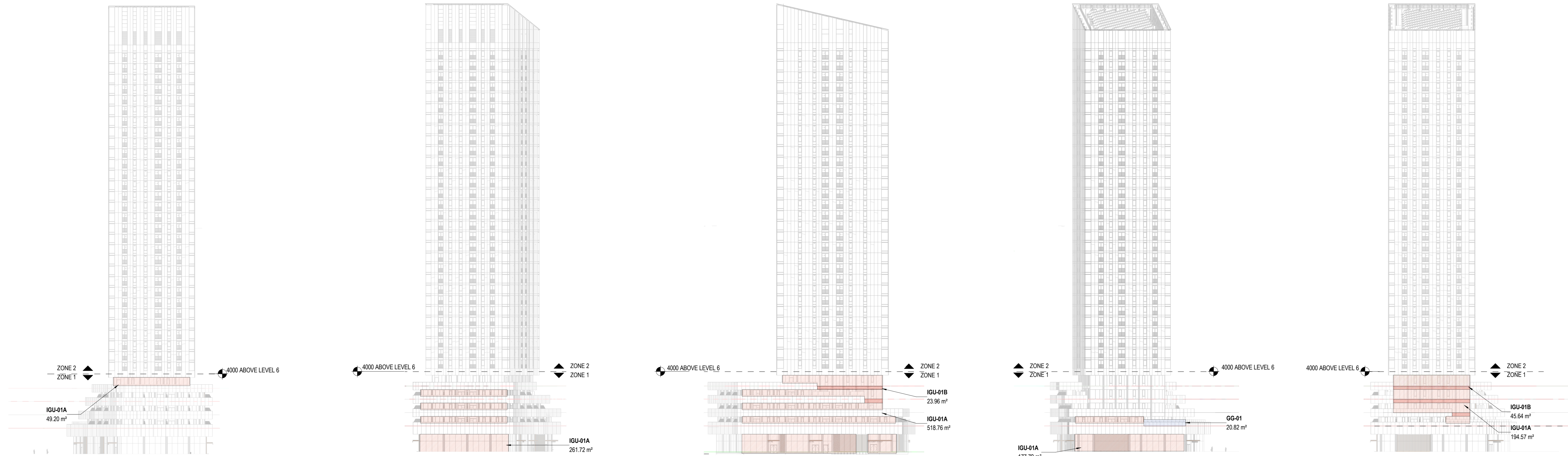
ISSUED FOR APPROVALS - NOT FOR CONSTRUCTION 2022-11-09

BUILDING ENCLOSURE

- **IGU-01A**
TRIPLE GLAZED INSULATED GLASS UNIT WITH STAGGERED 3MM DIAMETER ACID ETCHED DOT AT 50MM CENTRES ON SURFACE #1, LOW-E COATING ON SURFACE #2 AND #4.
- **IGU-01B**
TRIPLE GLAZED INSULATED GLASS UNIT WITH STAGGERED 3MM DIAMETER ACID ETCHED DOT AT 50MM CENTRES ON SURFACE #1, LOW-E COATING ON SURFACE #2 AND #4, 100% COVERAGE OPAQUE FRIT ON SURFACE #6

SITE ELEMENTS

- **GG-01**
TEMPERED LAMINATED GLASS NOISE AND WIND BARRIER WITH BIRD FRIENDLY PATTERN INTERLAYER IN COMPLIANCE WITH CSA 450-19



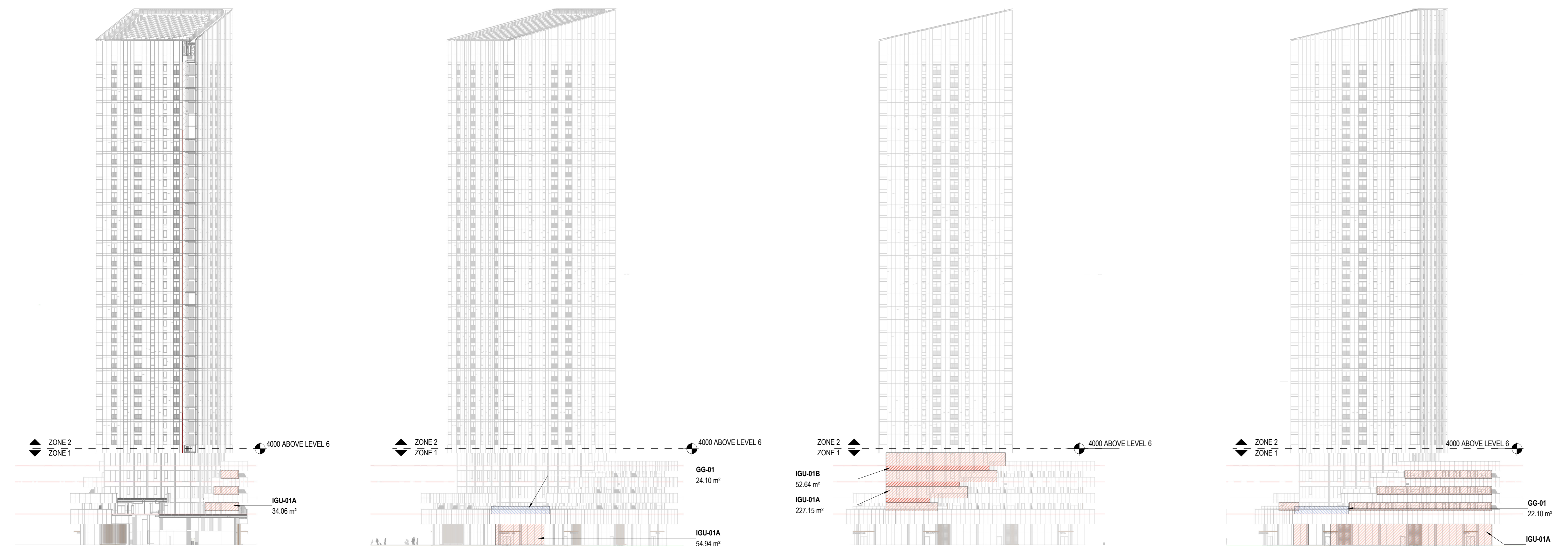
① ELEV - WEST BUILDING - WEST TOWER
1:500

⑤ ELEV - WEST BUILDING - WEST PODIUM
1:500

④ ELEV - WEST BUILDING - SOUTH ELEVATION
1:500

ELEV - WEST BUILDING - CENTRAL
PARKETTE
1:500

③ ELEV - WEST BUILDING - EAST TOWER
1:500



⑧ ELEV - WEST BUILDING - EAST
ELEVATION NORTH TERRACE
1:500

⑦ ELEV - WEST BUILDING - GATHERING
CIRCLE
1:500

② ELEV - WEST BUILDING - NORTH TOWER
1:500

⑥ ELEV - WEST BUILDING - NORTH
PODIUM
1:500

CONSULTANTS

- civil: TMIG
8800 Dufferin St., Suite 200, Vaughan, ON L4K 0C5
- STRUCTURAL: RJC Engineers
1545 Carlin Ave., Suite 304, Ottawa, ON K1Z 8P9
- Smith+Anderson
1600 Carling Ave., Suite 530, Ottawa, ON K1Z 1G3
- LANDSCAPING: PFS Studio
1777 W 3rd Ave., Vancouver, BC V5J 1K1
- CONSULTANT: Two Row Architect
1804 6th Line, Okesweken, ON N0A 1M0
- CONTRACTOR: EllisDon
2680 Queensview Dr., Ottawa, ON K2B 6J9

STAMP

PROJECT

LEBRETON LIBRARY
PARCEL
665 Albert St
Ottawa, ON
Canada



DREAM
30 Adelaide St. E., Suite 301,
Toronto, ON M5C 3H1
KEYPLAN



ISSUE CHART

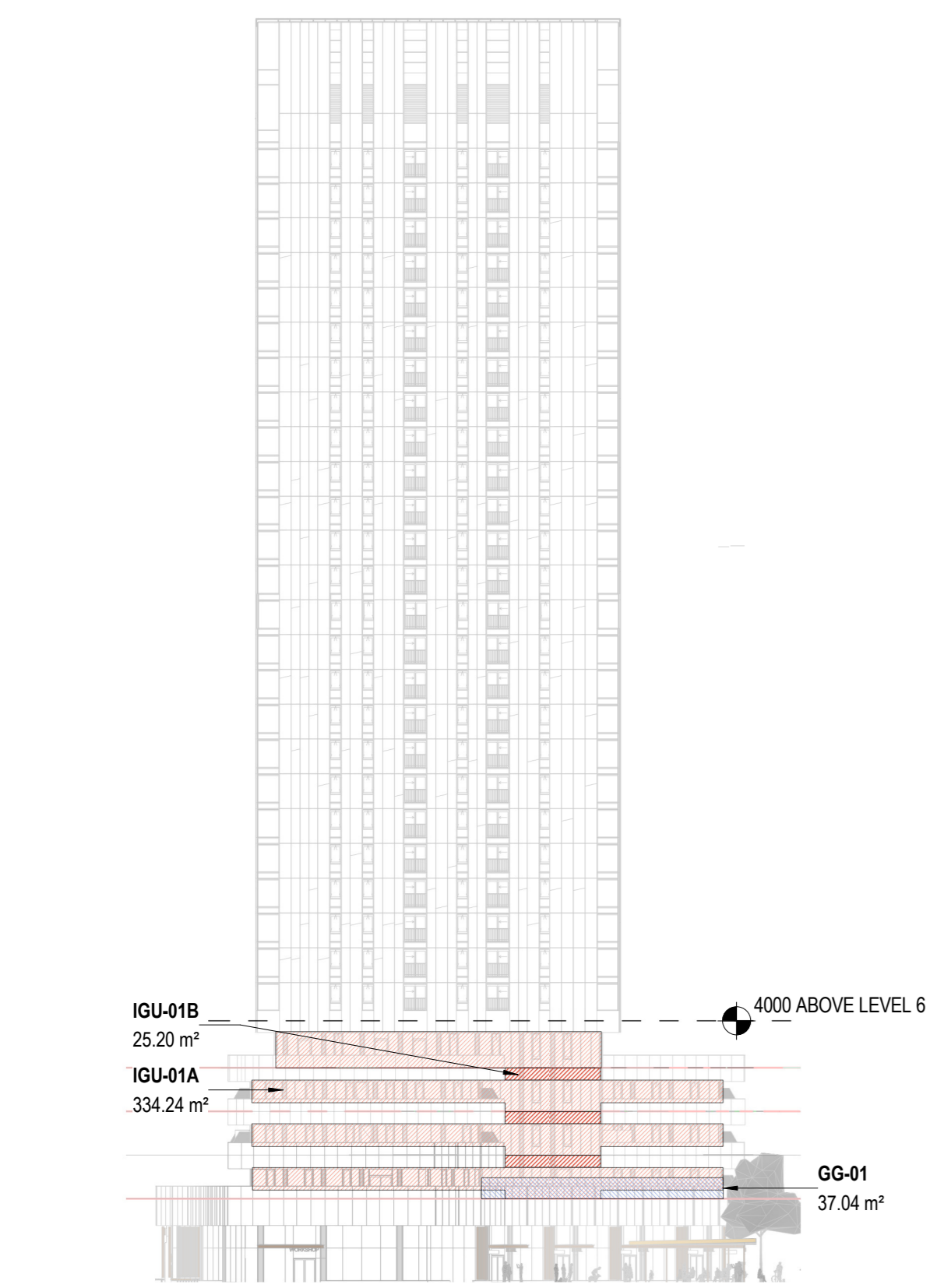
NO.	DATE	ISSUE
3	2022-06-10	ISSUED FOR 100% SD
4	2022-06-19	ISSUED FOR 66% DD
5	2022-09-30	ISSUED FOR 100% DD
7	2022-11-09	ISSUED FOR NCC 89% PLUGITA

BUILDING ENCLOSURE

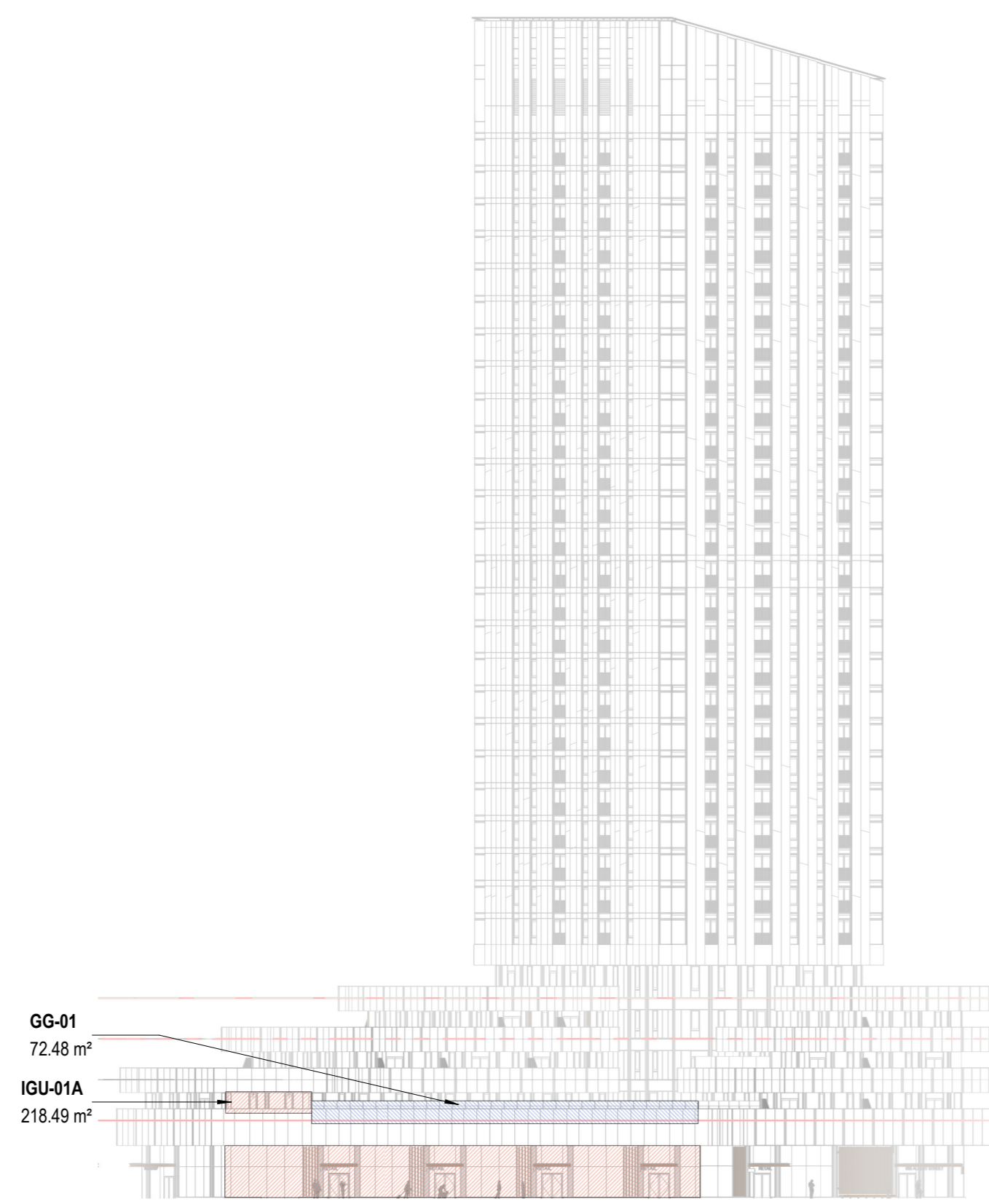
- IGU-01A**
TRIPLE GLAZED INSULATED GLASS UNIT WITH STAGGERED 3MM DIAMETER ACID ETCHED DOT AT 50MM CENTRES ON SURFACE #1, LOW-E COATING ON SURFACE #2 AND #4.
- IGU-01B**
TRIPLE GLAZED INSULATED GLASS UNIT WITH STAGGERED 3MM DIAMETER ACID ETCHED DOT AT 50MM CENTRES ON SURFACE #1, LOW-E COATING ON SURFACE #2 AND #4, 100% COVERAGE OPAQUE FRIT ON SURFACE #6

SITE ELEMENTS

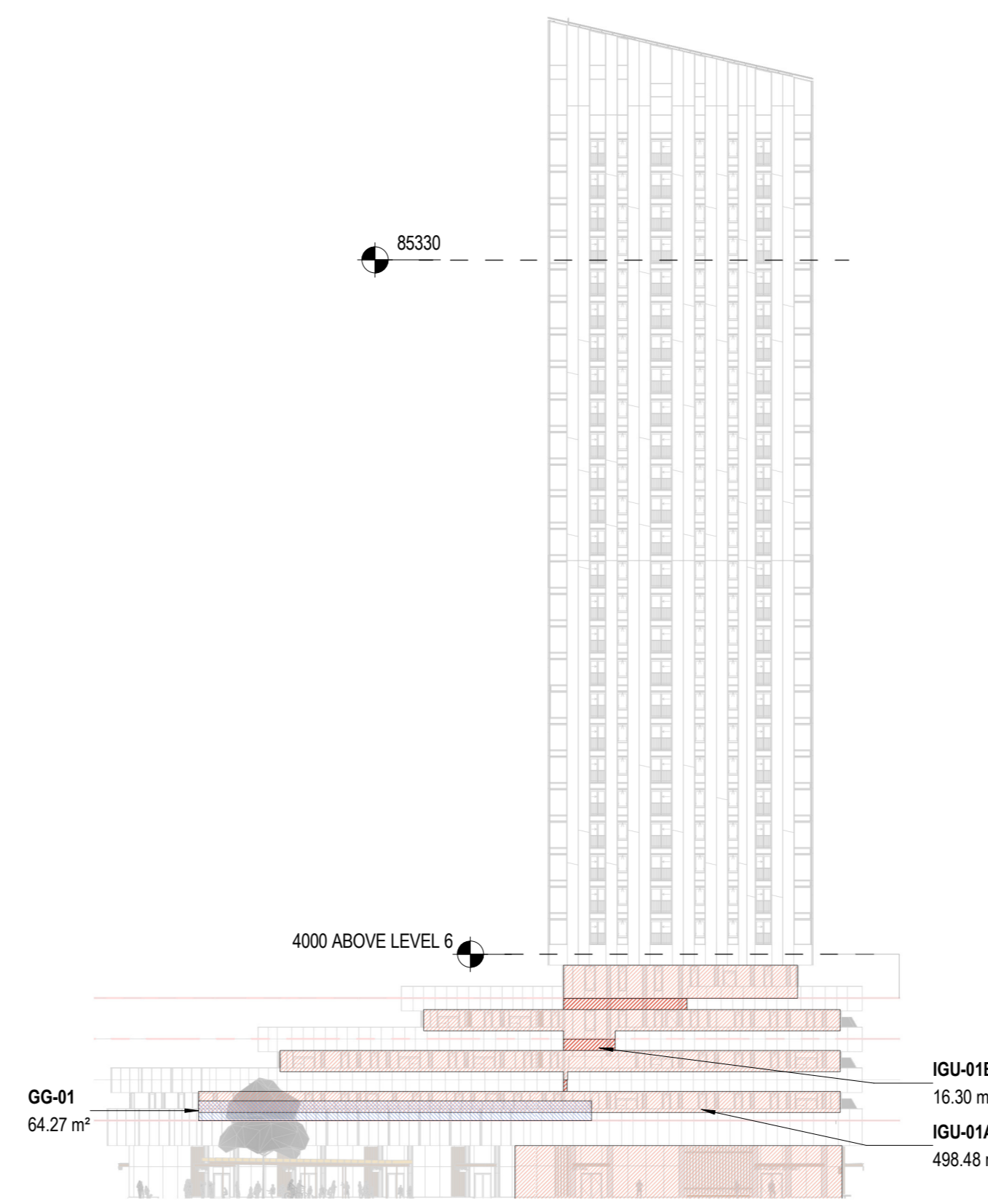
- GG-01**
TEMPERED LAMINATED GLASS NOISE AND WIND BARRIER WITH BIRD FRIENDLY PATTERN INTERLAYER IN COMPLIANCE WITH CSA 460.19



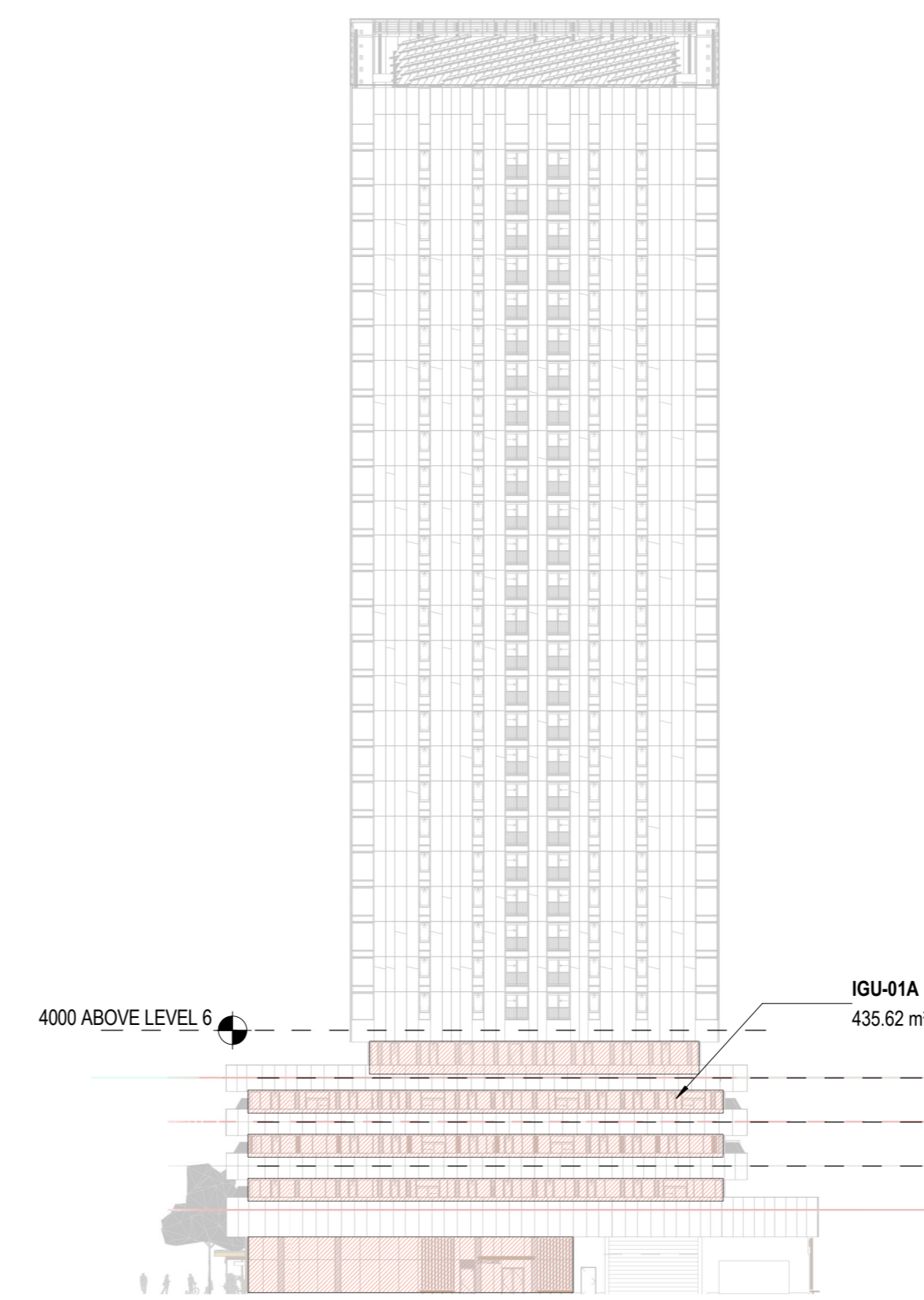
4 BIRD COLLISION DETERRENCE - EAST BUILDING - WEST ELEVATION
1: 500



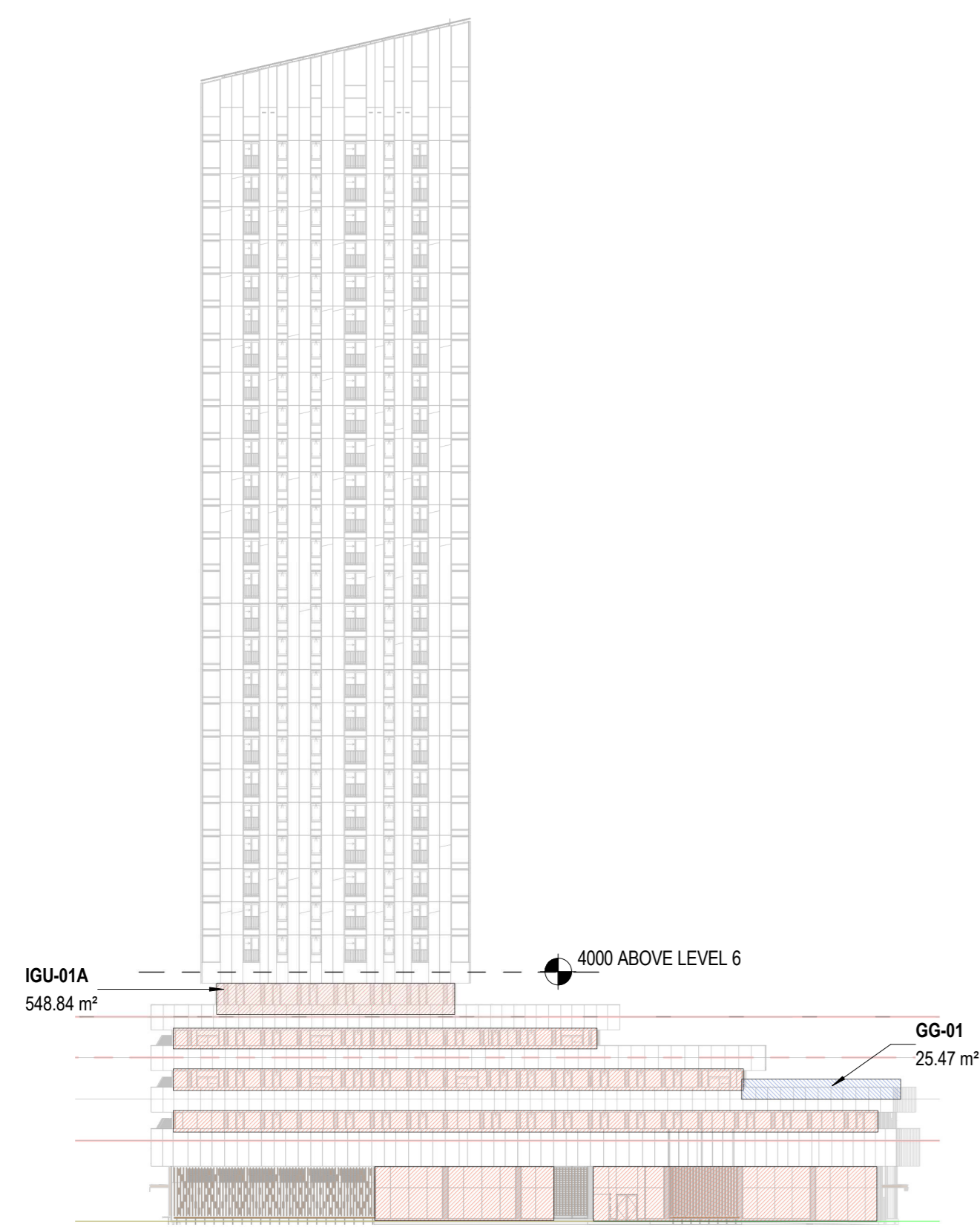
1 BIRD COLLISION DETERRENCE - EAST BUILDING - CENTRAL PARKETTE ELEVATION
1: 500



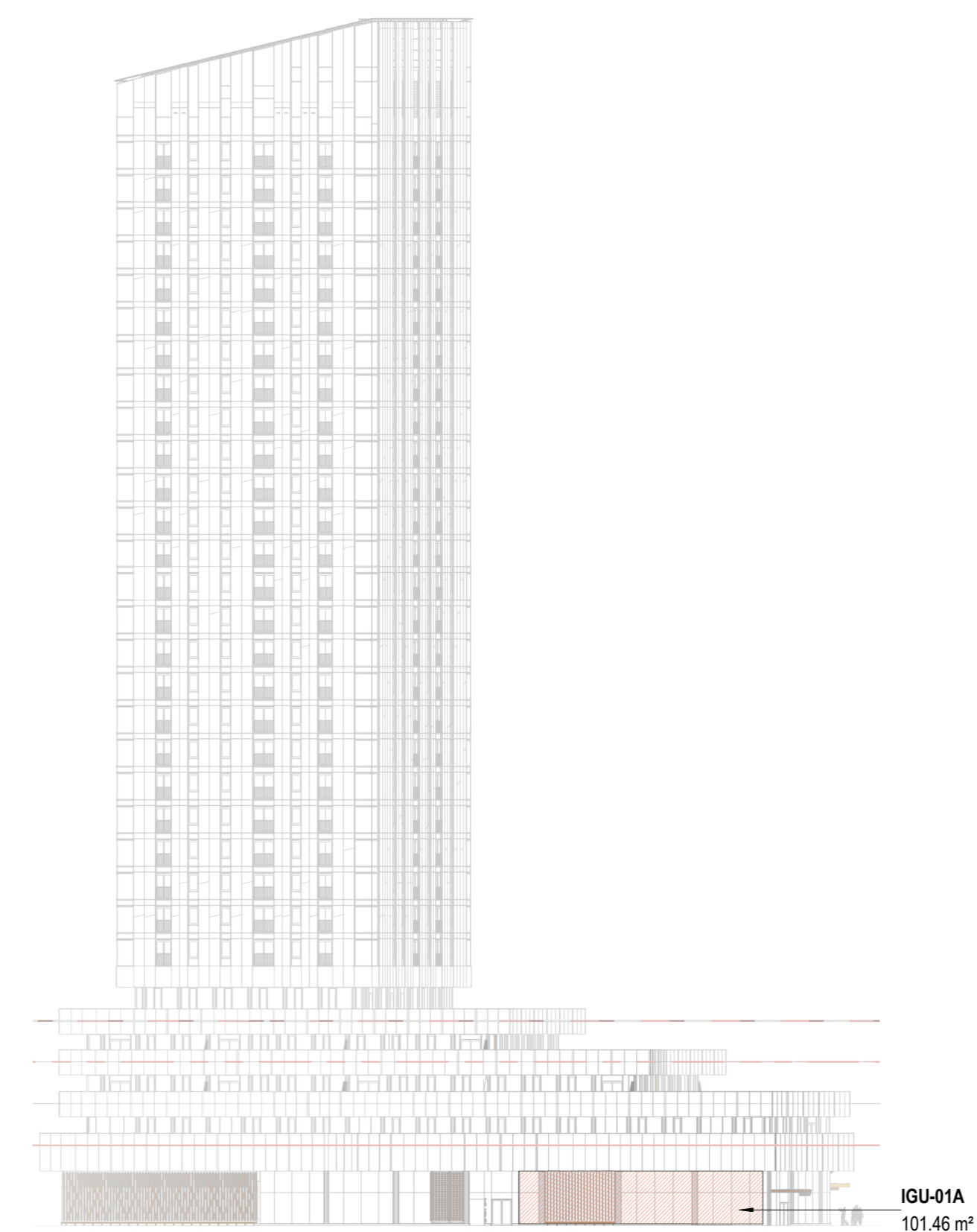
7 BIRD COLLISION DETERRENCE - EAST BUILDING - SOUTH ELEVATION
1: 500



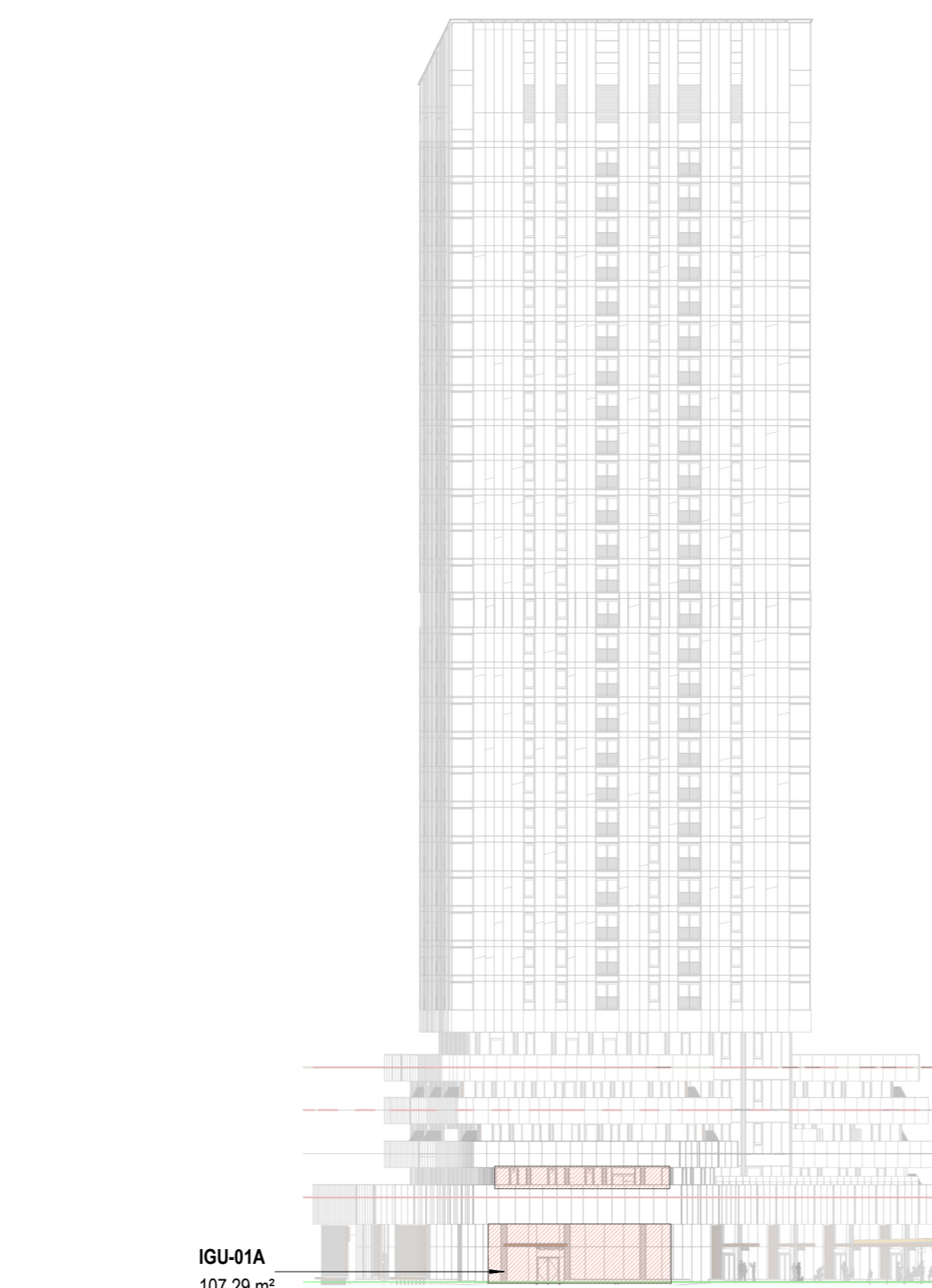
6 BIRD COLLISION DETERRENCE - EAST BUILDING - EAST ELEVATION
1: 500



5 BIRD COLLISION DETERRENCE - EAST BUILDING - NORTH ELEVATION
1: 500



3 BIRD COLLISION DETERRENCE - EAST BUILDING - PROMENADE ELEVATION
1: 500



2 BIRD COLLISION DETERRENCE - EAST BUILDING - GATHERING CIRCLE ELEVATION
1: 500