

CONSULTANTS

civil
TMIG
8800 Dufferin St., Suite 200, Vaughan, ON L4R 0C5

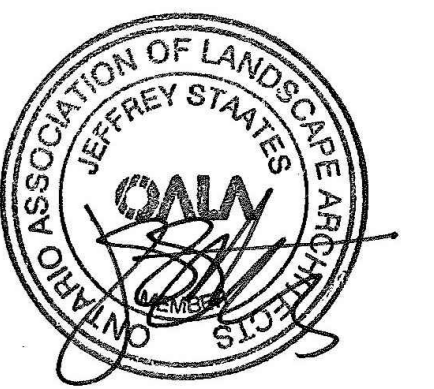
structural
RJC Engineers
1545 Carlin Ave., Suite 304, Ottawa, ON K1Z 8P9

Smith+Andersen
1600 Carling Ave., Suite 530, Ottawa, ON K1Z 1G3

LANDSCAPE
PFS Studio
1777 W 3rd Ave., Vancouver, BC V6J 1KJ

consultant
Two Row Architect
1804 6th Line, Oshawa, ON N6A 1M0

contractor
Eli-Dan
2680 Quorumview Dr., Ottawa, ON K2B 8J9



PROJECT

LEBRETON LIBRARY
PARCEL
665 Albert St
Ottawa, ON
Canada



DREAM
30 Adelaide St. E., Suite 301,
Toronto, ON M5C 3H1
KEYPLAN

ISSUED FOR SITE PLAN CONTROL - NOT FOR CONSTRUCTION 2023-03-24

ISSUE CHART

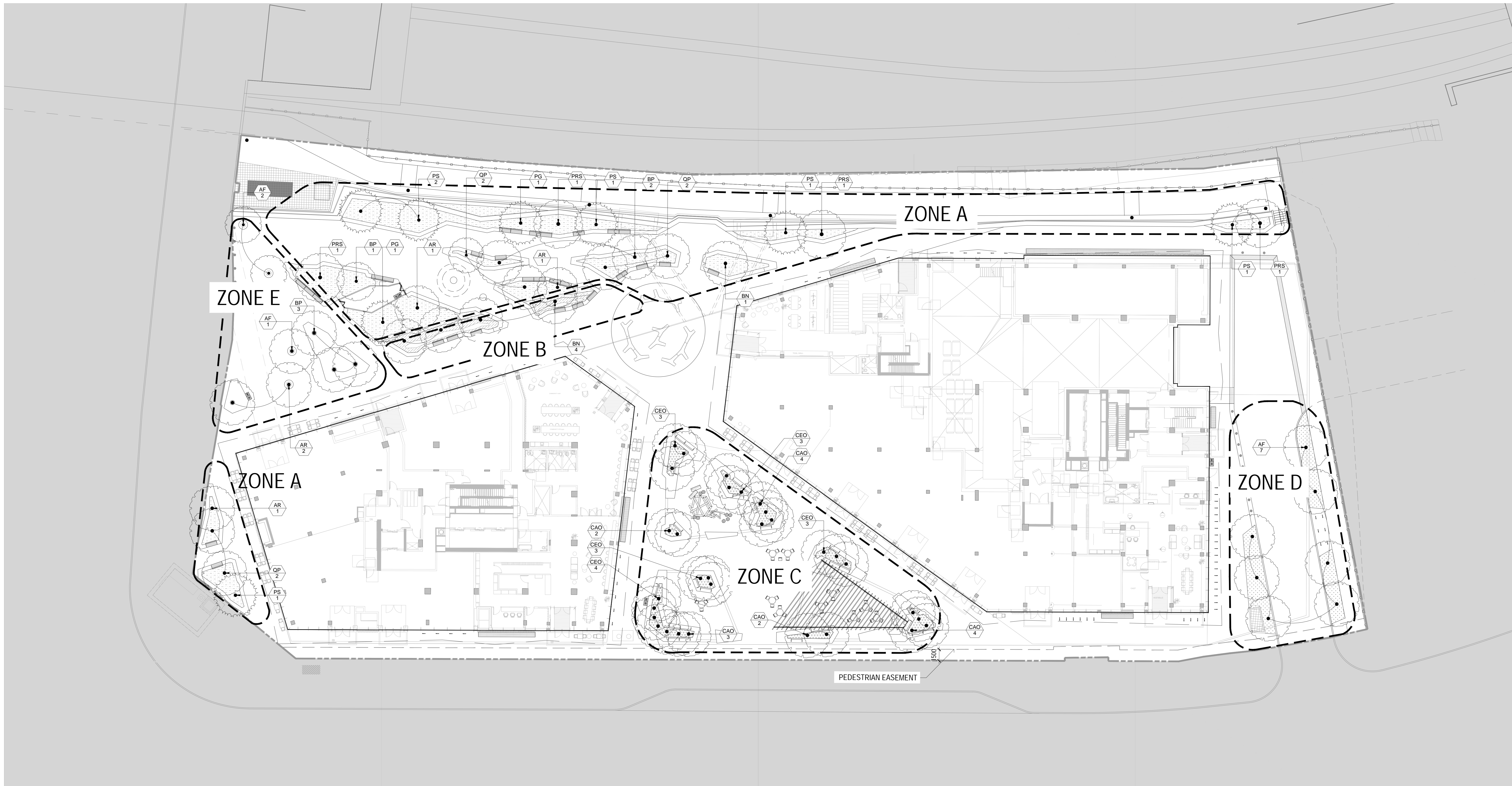
NO.	DESCRIPTION	DATE
1	ISSUED FOR SITE PLAN CONTROL	2023-03-24
2	REVISION FOR PUBLIC WORKS	2023-04-05
3	REVISION FOR PUBLIC WORKS	2023-04-05
4	REVISION FOR PUBLIC WORKS	2023-04-05

Job Number: _____ TITLE: _____

PLANTING PLAN
GROUND LEVEL

SHEET NUMBER

L05-10



PLANT SCHEDULE

ZONE A - WEDGE PARK (298 m2) - PM1

KEY	QTY	BOTANICAL NAME	COMMON NAME	SPACING	SIZE / DESCRIPTION	NOTES
Trees						
AR	3	Acer rubrum	Red Maple	Refer to Plan	3m ht, B&B	Native / Drought Tolerant
BP	3	Betula papyrifera	Paper Birch	Refer to Plan	3m ht, B&B	Native / Drought Tolerant
BN	1	Betula Nigra	Black Birch	Refer to Plan	3m ht, B&B	Native / Drought Tolerant
PG	2	Picea glauca	White Spruce	Refer to Plan	3m ht, B&B	Native / Drought Tolerant
PRS	4	Prunus serotina	Black Cherry	Refer to Plan	3m ht, B&B	Native / Drought Tolerant
PS	6	Pinus strobus	Eastern White Pine	Refer to Plan	3m ht, B&B	Native / Drought Tolerant
QP	6	Quercus palustris	Pin Oak	Refer to Plan	3m ht, B&B	Native / Drought Tolerant
Shrubs - (25%, 68 m2) TOTAL = 188						
Rv		Rosa virginiana	Virginia Rose	600mm o.c.	2 Gal. Pot	Native / Drought Tolerant
Csm		Cornus sanguineus	Blood Twig Dogwood	750mm o.c.	3 Gal. Pot	Drought Tolerant
Perennials and Grasses - (75%, 205 m2) TOTAL = 1033						
ab		Aster novae-belgii	Fall Aster	450mm o.c.	1 gal Pot	Drought Tolerant
as		Allium sphaerocephalon	Drumstick Allium	450mm o.c.	Bulb	Drought Tolerant
cac		Calamagrostis canadensis	Canada Blue Joint	450mm o.c.	1 gal Pot	Native
cp		Carex pensylvanica	Wood Sedge	300mm o.c.	1 gal Pot	Native / Drought Tolerant
ep		Echinacea pallida	Pale Coneflower	300m/2206m o.c.	1 gal Pot	Native / Drought Tolerant
hp		Hystrix patula	Bottlebrush Grass	300mm o.c.	1 gal Pot	Native / Drought Tolerant
ec		Elymus canadensis	Canada Wild Rye	450mm o.c.	1 gal Pot	Native / Drought Tolerant
bl		Liatris ligulistylis	Blazing Star	300mm o.c.	1 gal Pot	Native / Drought Tolerant
ss		Schizachyrium scoparium	Little Bluestem	450mm o.c.	1 gal Pot	Native / Drought Tolerant
snu		Sorghastrum nutans	Indian Grass	450mm o.c.	1 gal Pot	Native / Drought Tolerant
vw		Veronicastrum virginicum	Culver's Root	450mm o.c.	1 gal Pot	Native / Drought Tolerant

ZONE D - EMPRESS LANE (69.7 m2) - PM4

KEY	QTY	BOTANICAL NAME	COMMON NAME	SPACING	SIZE / DESCRIPTION	NOTES
Trees						
AF	7	Acer freemanii	Freeman Maple	Refer to Plan	3m ht, B&B	Native / Drought Tolerant
Perennials and Grasses - TOTAL = 350						
ag		Andropogon gerardii	Big Bluestem	450mm o.c.	1 gal Pot	Native / Drought Tolerant
pv		Panicum virgatum	Switch Grass	450mm o.c.	1 gal Pot	Native / Drought Tolerant
sc		Solidago canadensis	Canada Goldenrod	450mm o.c.	1 gal Pot	Native / Drought Tolerant
snu		Sorghastrum nutans	Indian Grass	450mm o.c.	1 gal Pot	Native / Drought Tolerant
sn		Symphoricarpos novae-angliae	New England Aster	300mm o.c.	1 gal Pot	Native / Drought Tolerant
ss		Schizachyrium scoparium	Little Bluestem	450mm o.c.	1 gal Pot	Native / Drought Tolerant

ZONE B - WET CREASE(33 m2) - PM2

KEY	QTY	BOTANICAL NAME	COMMON NAME	SPACING	SIZE / DESCRIPTION	NOTES
Trees						
BN	4	Betula Nigra	Black Birch	Refer to Plan	3m ht, B&B	Native / Drought Tolerant
Shrubs - (25%, 10 m2) TOTAL = 23						
Csa		Cornus sericea	Red Osier Dogwood	750mm o.c.	3 Gal. Pot	Native / Drought Tolerant
Perennials and Grasses - (75%, 31m2) TOTAL = 150						
ai		Asclepias incarnata	Swamp Milkweed	300mm o.c.	1 gal Pot	Native
cc		Carex crinita	Fringed Sedge	300mm o.c.	1 gal Pot	Native
cr		Carex rosea	Rosy Sedge	300mm o.c.	1 gal Pot	Native
iv		Iris versicolor	Blue Flag Iris	300mm o.c.	1 gal Pot	Native
lc		Lobelia cardinalis	Cardinal Flower	300mm o.c.	1 gal Pot	Native
vh		Verbena hastata	Blue Vervain	300mm o.c.	1 gal Pot	Native

ZONE E - PIMISI PLAZA - PMS

KEY	QTY	BOTANICAL NAME	COMMON NAME	SPACING	SIZE / DESCRIPTION	NOTES
Trees						
AF	3	Acer freemanii	Freeman Maple	Refer to Plan	3m ht, B&B	Native / Drought Tolerant
AR	2	Acer rubrum	Red Maple	Refer to Plan	3m ht, B&B	Native / Drought Tolerant
BP	3	Betula papyrifera	Paper Birch	Refer to Plan	3m ht, B&B	Native / Drought Tolerant

ZONE C - BOSQUE(51 m2) - PM3

KEY	QTY	BOTANICAL NAME	COMMON NAME	SPACING	SIZE / DESCRIPTION	NOTES
Trees						
CEO	15	Celtis occidentalis	Hackberry	Refer to Plan	3m ht, B&B	Native / Drought Tolerant
CAO	16	Carya ovalum	Shagbark Hickory	Refer to Plan	3m ht, B&B	Native / Drought Tolerant
Shrubs - (25%, 13m2) TOTAL = 27						
Csf		Cornus stolonifera	Yellow Twig Dogwood	750mm o.c.	Gal. Pot	Native / Drought Tolerant
Ck		Cornus x 'Kelsey'	Kelsey Dogwood	450mm o.c.	Gal. Pot	Native / Drought Tolerant
Perennials and Grasses - (75%, 38m2) TOTAL = 188						
epf		Echinacea purpurea	Purple Coneflower	300mm o.c.	1 gal Pot	Native / Drought Tolerant
snc		Salvia nemerosa	Meadow Sage	300mm o.c.	1 gal Pot	Native / Drought Tolerant
sb		Sedum telephium	Sedum	300mm o.c.	1 gal Pot	Drought Tolerant

Andrew McCreight
ANDREW MCCREIGHT
MANAGER (A), DEVELOPMENT REVIEW CENTRAL
PLANNING, REAL ESTATE & ECONOMIC DEVELOPMENT
DEPARTMENT, CITY OF OTTAWA

APPROVED
By Andrew McCreight at 2:08 pm, Dec 14, 2023

