

CONSULTANTS

- civil**
TMIG
8800 Dufferin St., Suite 200, Vaughan, ON L4K 0C5
- STRUCTURAL**
RJC Engineers
1545 Carling Ave., Suite 304, Ottawa, ON K1Z 9P9
- MEP**
Smith+Anderson
1600 Carling Ave., Suite 530, Ottawa, ON K1Z 1G3
- LANDSCAPING**
PFS Studio
1777 W 3rd Ave., Vancouver, BC V5U 1KJ
- CONSULTANT**
Two Row Architect
1804 6th Line, Oshawa, ON N4A 1M0
- CONTRACTOR**
EllisDon
2680 Queensview Dr., Ottawa, ON K2B 6J9

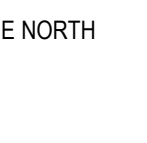
STAMP

PROJECT

**LEBRETON LIBRARY
PARCEL**
665 Albert St
Ottawa, ON
Canada



DREAM
30 Adelaide St. E., Suite 301,
Toronto, ON M5C 3H1
KEYPLAN



ISSUE CHART

ISSUE	DATE
3 ISSUED FOR 100% SD	2023-06-10
4 ISSUED FOR 66% DD	2022-06-19
5 ISSUED FOR 100% DD	2022-09-30
7 ISSUED FOR NCC 99% FLUORA	2022-11-09
10 REISSUED FOR SPA & NCC 99%	2023-02-03
12 ISSUED FOR PROGRESS REVIEW	2023-03-03
13 ISSUED FOR SITE PLAN CONTROL	2023-03-24

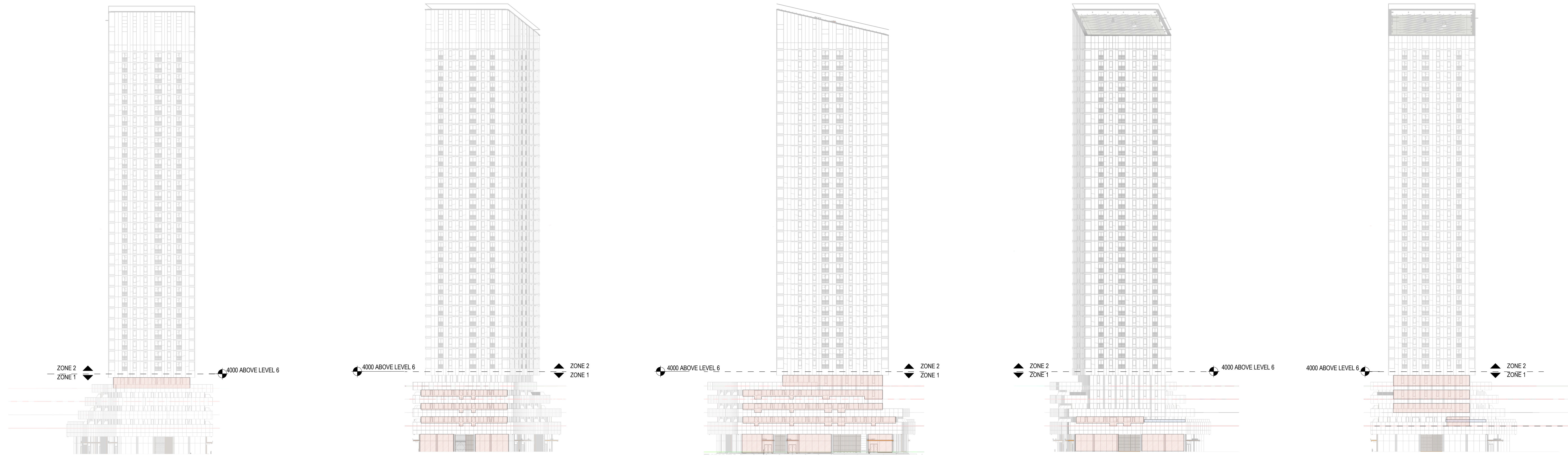
ISSUED FOR SITE PLAN CONTROL, 2023-03-24

BUILDING ENCLOSURE

ALL SURFACES CREATING FLY-THROUGH CONDITIONS (VISION & SPANDREL GLAZING)
TRIPLE GLAZED INSULATED GLASS UNIT WITH STAGGERED 3MM DIAMETER ACID ETCHED DOT AT 50MM CENTRES ON SURFACE #1, LOW-E COATING ON SURFACE #2 AND #4.

SITE ELEMENTS

WS-01 TEMPERED LAMINATED GLASS NOISE AND WIND BARRIER WITH STAGGERED 3MM DIAMETER ACID ETCHED DOT AT 50MM CENTRES ON SURFACE #1



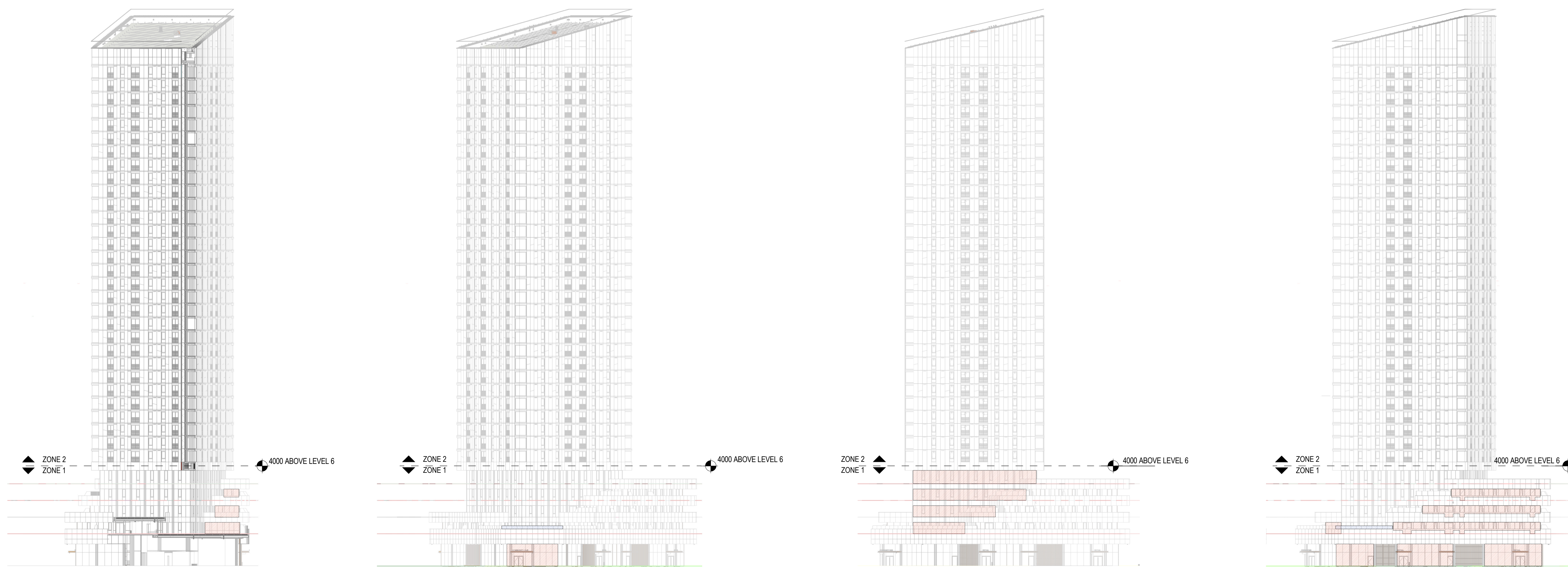
9 ELEV - WEST BUILDING - WEST TOWER
1:500

8 ELEV - WEST BUILDING - WEST PODIUM
1:500

7 ELEV - WEST BUILDING - SOUTH ELEVATION
1:500

6 ELEV - WEST BUILDING - CENTRAL PARKETTE
1:500

5 ELEV - WEST BUILDING - EAST TOWER
1:500



4 ELEV - WEST BUILDING - EAST ELEVATION NORTH TERRACE
1:500

3 ELEV - WEST BUILDING - GATHERING CIRCLE
1:500

2 ELEV - WEST BUILDING - NORTH TOWER
1:500

1 ELEV - WEST BUILDING - NORTH PODIUM
1:500

Andrew McCreight
ANDREW MCCREIGHT
MANAGER (A), DEVELOPMENT REVIEW CENTRAL
PLANNING, REAL ESTATE & ECONOMIC DEVELOPMENT
DEPARTMENT, CITY OF OTTAWA

APPROVED
By Andrew McCreight at 2:04 pm, Dec 14, 2023

CONSULTANTS

- civil**
TMIG
8800 Dufferin St., Suite 200, Vaughan, ON L4K 0C5
- STRUCTURAL**
RJC Engineers
1545 Carling Ave., Suite 304, Ottawa, ON K1Z 9P9
- MEP**
Smith+Anderson
1600 Carling Ave., Suite 530, Ottawa, ON K1Z 1G3
- LANDSCAPING**
PFS Studio
1777 W 3rd Ave., Vancouver, BC V5J 1KJ
- CONSULTANT**
Two Row Architect
1804 6th Line, Orillia, ON N0A 1M0
- CONTRACTOR**
EllisDon
2680 Queensview Dr., Ottawa, ON K2B 6J9

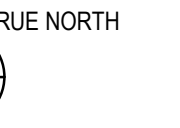
STAMP

PROJECT

**LEBRETON LIBRARY
PARCEL**
665 Albert St
Ottawa, ON
Canada



DREAM
30 Adelaide St. E., Suite 301,
Toronto, ON M5C 3H1
KEYPLAN



ISSUE CHART

NO.	DATE	ISSUE
3	2023-06-10	ISSUED FOR 100% SD
4	2022-06-19	ISSUED FOR 66% DD
5	2022-09-30	ISSUED FOR 100% DD
7	2022-11-09	ISSUED FOR NCC 99% REVIEW
10	2023-02-03	RESUBMITTED FOR SPA & NCC 99%
12	2023-03-03	ISSUED FOR PROGRESS REVIEW
13	2023-03-24	ISSUED FOR SITE PLAN CONTROL

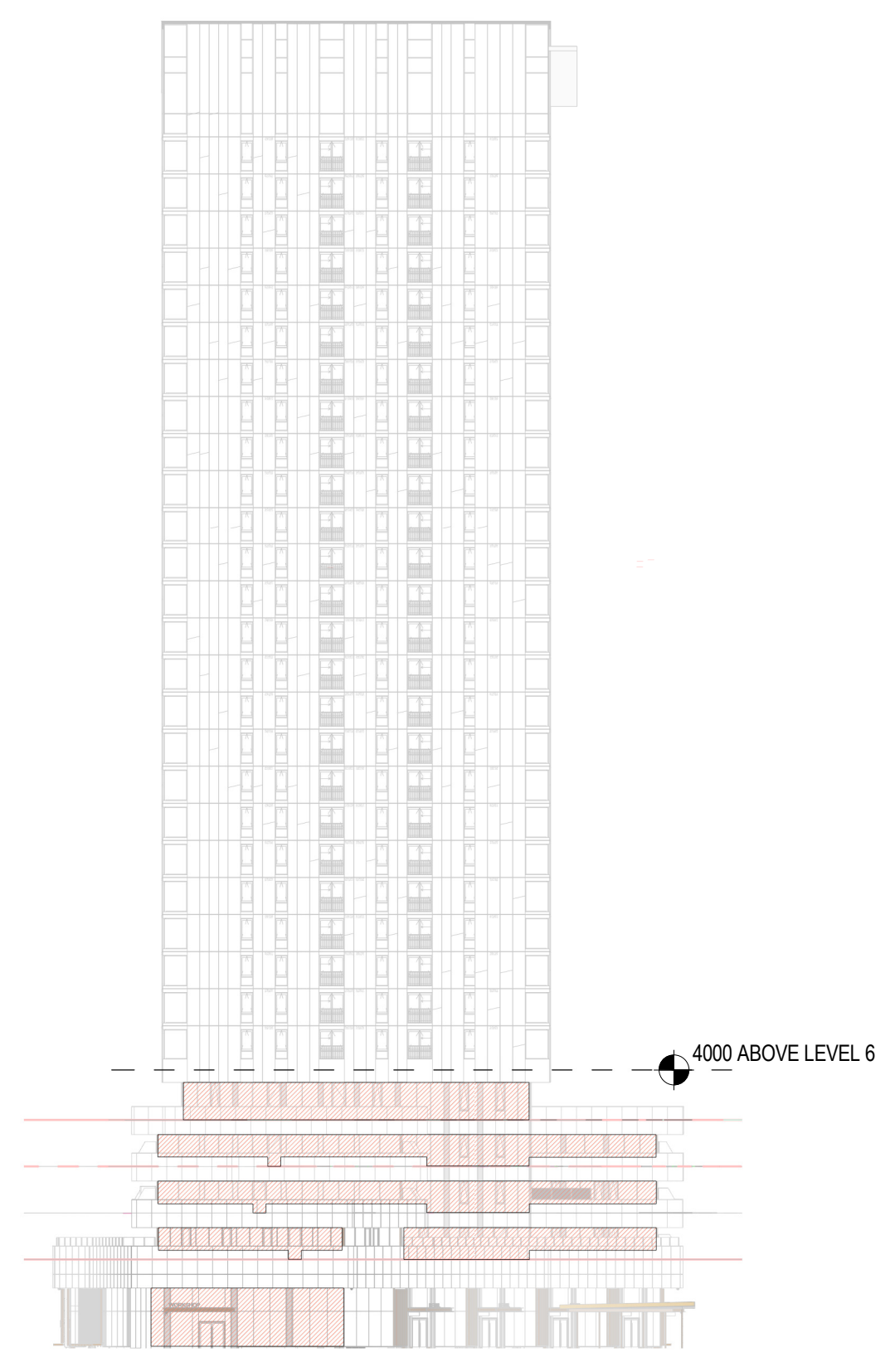
ISSUED FOR SITE PLAN CONTROL, 2023-03-24

BUILDING ENCLOSURE

ALL SURFACES CREATING FLY THROUGH CONDITIONS (VISION & SPANDREL GLAZING)
TRIPLE GLAZED INSULATED GLASS UNIT WITH STAGGERED 5MM DIAMETER ACID ETCHED DOT AT 50MM CENTRES ON SURFACE #1, LOW-E COATING ON SURFACE #2 AND #4.

SITE ELEMENTS

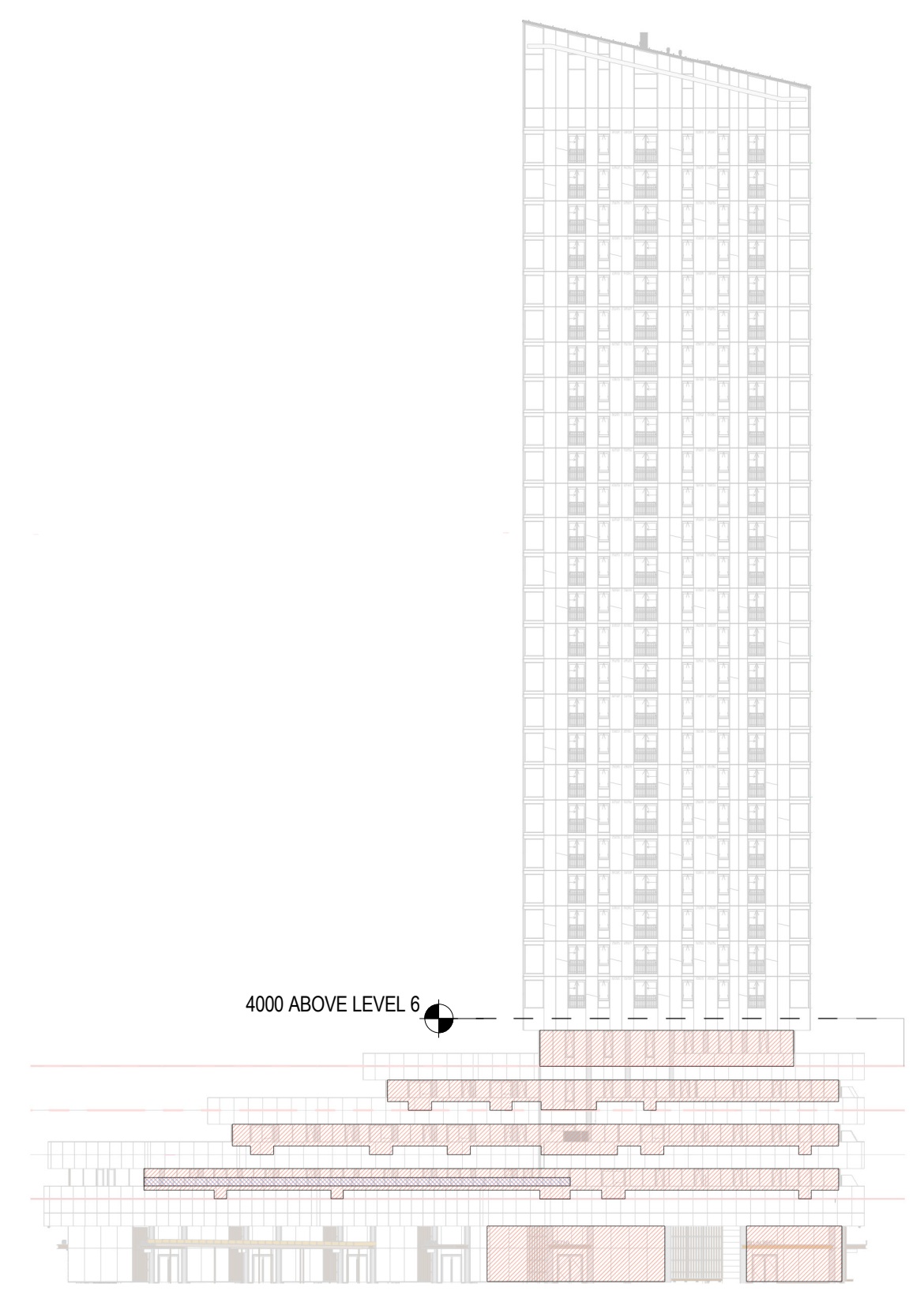
WS41 TEMPERED LAMINATED GLASS NOISE AND WIND BARRIER WITH STAGGERED 5MM DIAMETER ACID ETCHED DOT AT 50MM CENTRES ON SURFACE #1



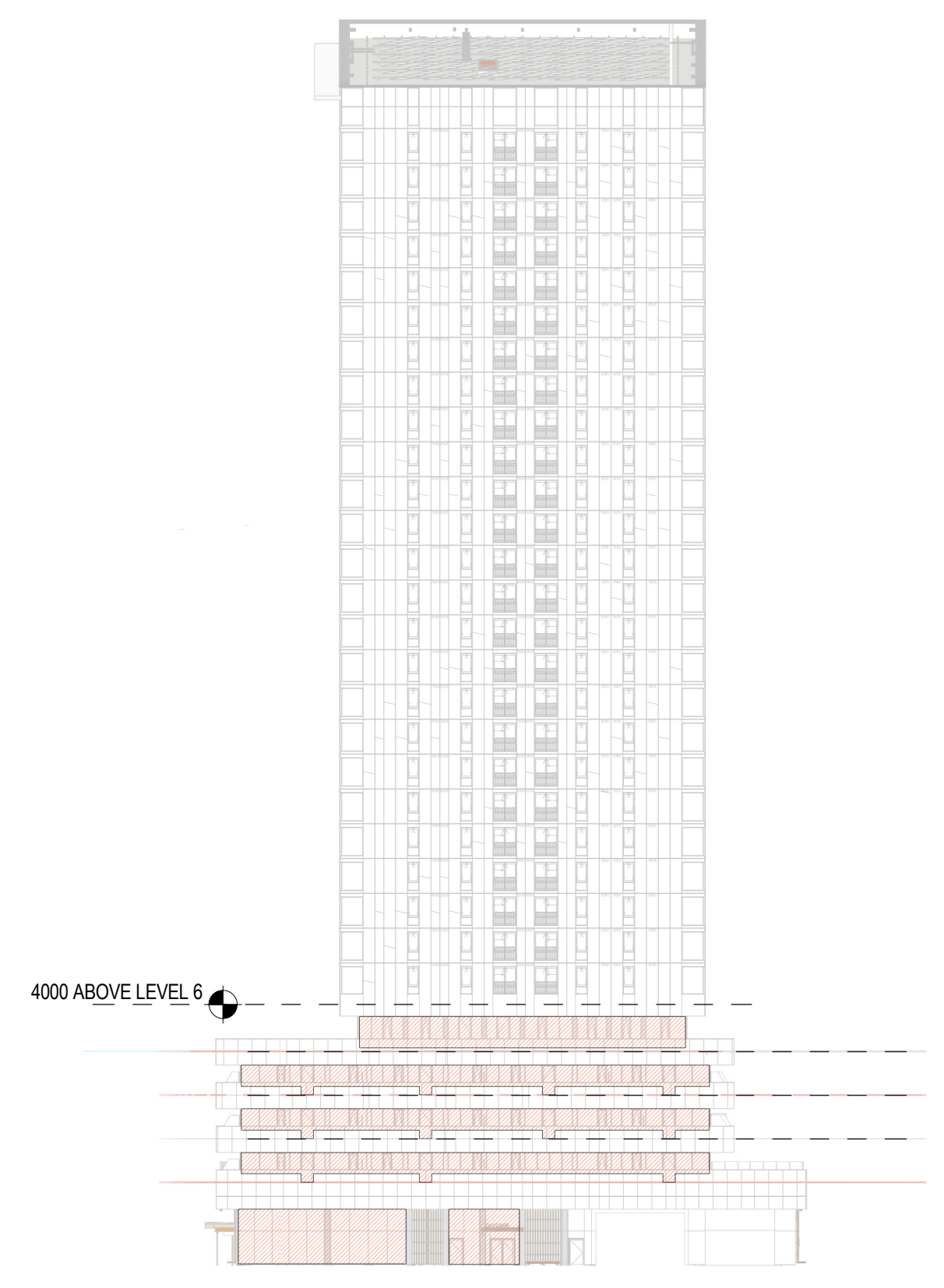
7 BIRD COLLISION DETERRENCE - EAST BUILDING - WEST ELEVATION
1:500



6 BIRD COLLISION DETERRENCE - EAST BUILDING - CENTRAL PARKETTE ELEVATION
1:500



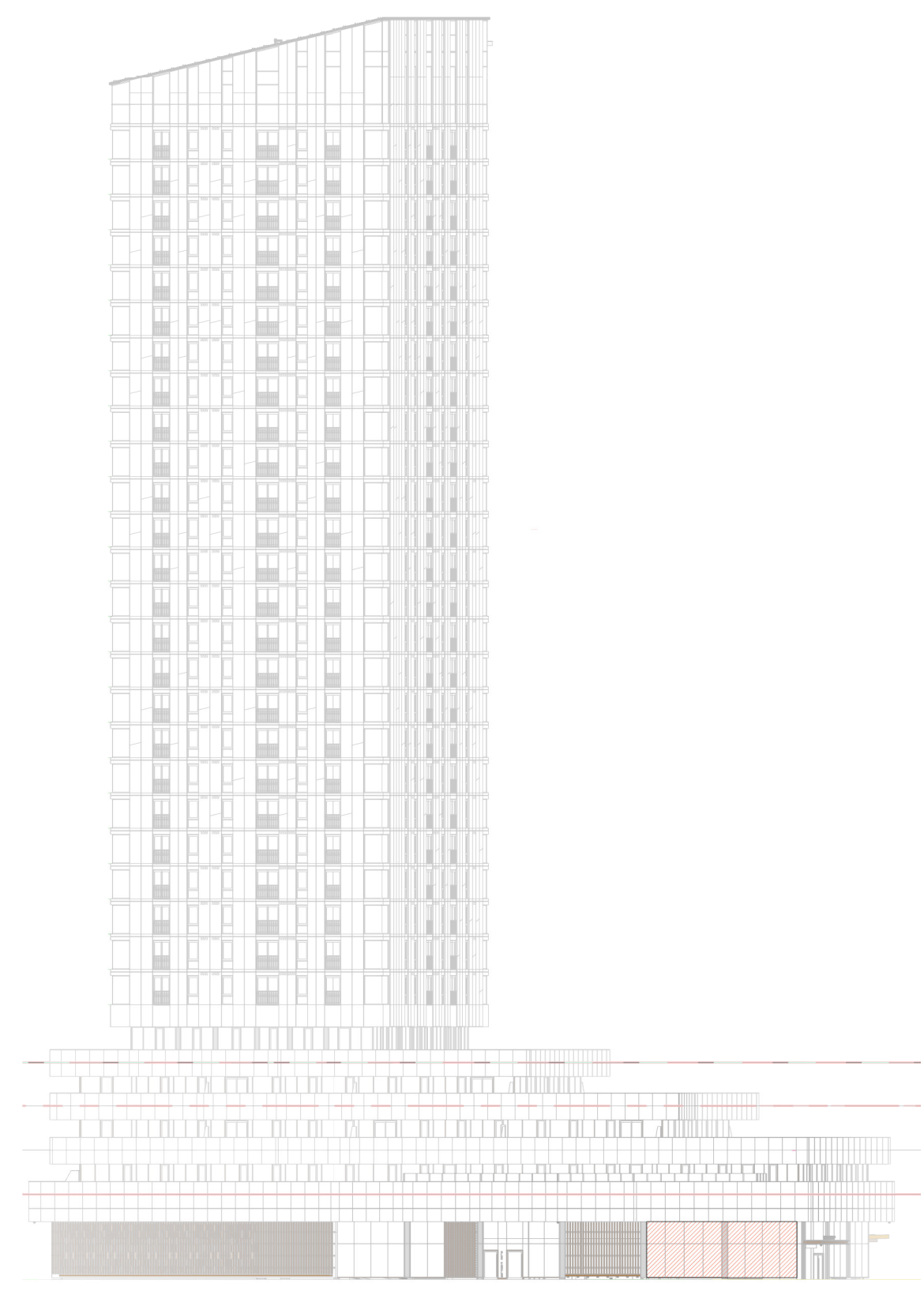
5 BIRD COLLISION DETERRENCE - EAST BUILDING - SOUTH ELEVATION
1:500



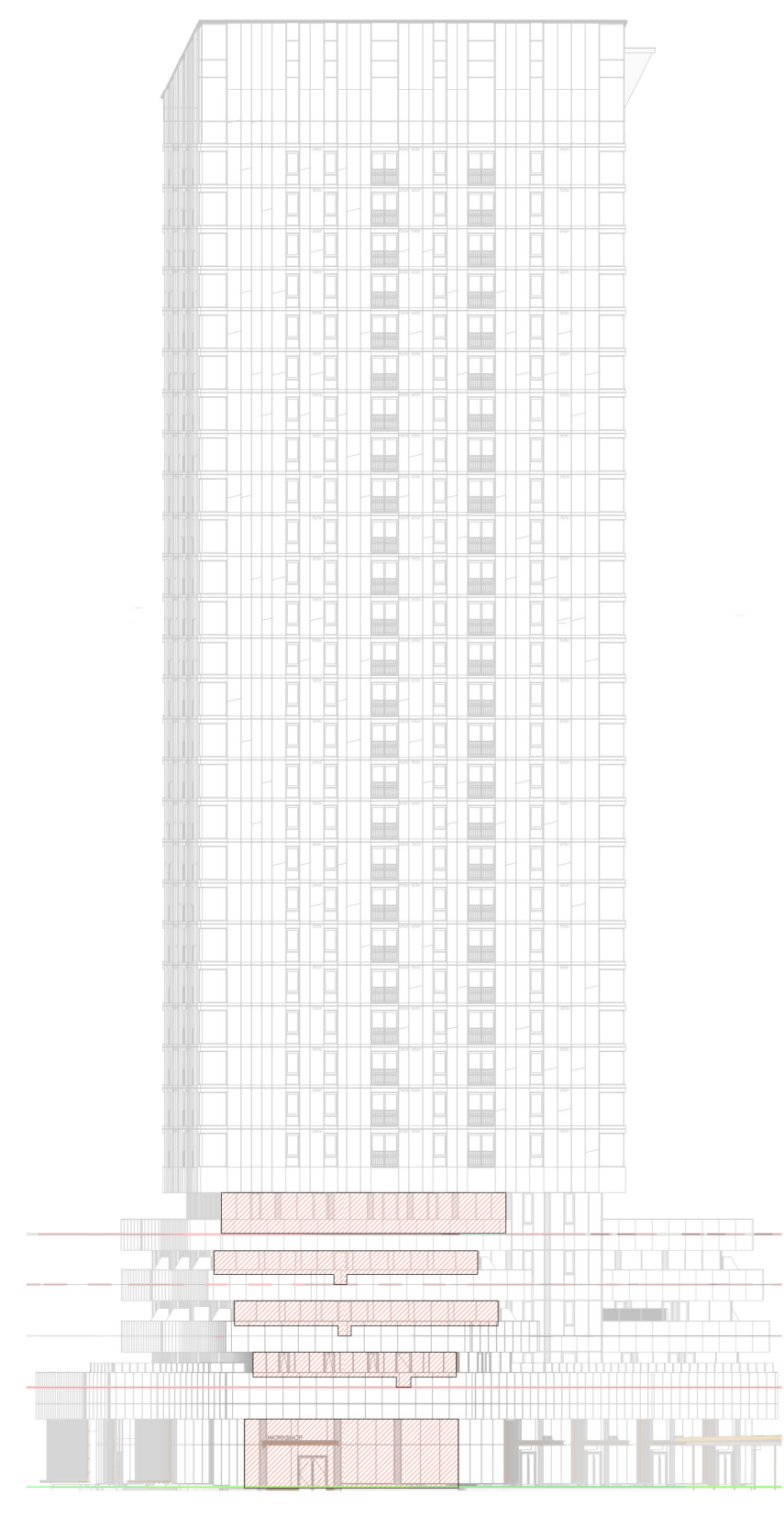
4 BIRD COLLISION DETERRENCE - EAST BUILDING - EAST ELEVATION
1:500



3 BIRD COLLISION DETERRENCE - EAST BUILDING - NORTH ELEVATION
1:500



2 BIRD COLLISION DETERRENCE - EAST BUILDING - PROMENADE ELEVATION
1:500



1 BIRD COLLISION DETERRENCE - EAST BUILDING - GATHERING CIRCLE ELEVATION
1:500

Andrew McCreight
ANDREW MCCREIGHT
MANAGER (A), DEVELOPMENT REVIEW CENTRAL
PLANNING, REAL ESTATE & ECONOMIC DEVELOPMENT
DEPARTMENT, CITY OF OTTAWA

APPROVED
By Andrew McCreight at 2:04 pm, Dec 14, 2023