

**CONSULTANTS**

TMG  
8800 Dufferin St., Suite 200, Vaughan, ON L4K 0C5  
STRUCTURAL

RJC Engineers  
1545 Carlin Ave., Suite 304, Ottawa, ON K1Z 9P9

Smith+Anderson  
1600 Carling Ave., Suite 530, Ottawa, ON K1Z 1G3  
LANDSCAPE

PFS Studio  
1777 W 3rd Ave., Vancouver, BC V6J 1K3

Two Row Architect  
1804 6th Line, Oshawa, ON N4A 1M0

ElisDon  
2680 Queensway Dr., Ottawa, ON K2B 8J9

**STAMP**



**PROJECT**

**LEBRETON LIBRARY**  
**PARCEL**  
665 Albert St  
Ottawa, ON  
Canada



**DREAM**  
30 Adelaide St. E., Suite 301,  
Toronto, ON M5C 3H1  
KEYPLAN



**ISSUE CHART**

NO.	DESCRIPTION	DATE
1	ISSUED FOR SPA RESUBMISSION	2022-11-09
2	ISSUED FOR SPA RESUBMISSION	2022-11-09
3	ISSUED FOR SPA RESUBMISSION	2022-11-09
4	ISSUED FOR SPA RESUBMISSION	2022-11-09
5	ISSUED FOR SPA RESUBMISSION	2022-11-09

ISSUED FOR SPA RESUBMISSION - NOT FOR CONSTRUCTION 2022 - 11 - 09



**KEY PLAN**  
N.T.S.

**LEGEND**

SEE ABBREVIATIONS BELOW

- 200.00 @ 0.5% PROPOSED ITEMS
- 200.00 @ 0.5% EXISTING ITEMS
- LIMIT OF PROPERTY LINE
- LIMIT OF UNDERGROUND STRUCTURE
- SANITARY SEWER
- STORM SEWER
- WATERMAIN
- MH
- CB / IAD / TD
- HYDRANT / SIEMSE / VALVE BOX
- BACKFLOW PREVENTER / WATER METER
- VALVE BOX / DETECTOR ASSEMBLY
- EX UTILITY - GAS
- EX UTILITY - JUNK BUILD
- EX UTILITY - BELL
- EX UTILITY - TRAFFIC
- EX UTILITY - HYDRO

**BENCHMARK:** ELEVATIONS ARE GEODETIC IN METRES AND DERIVED FROM THE CAN-NET VRS NETWORK MONUMENT, OTTAWA  
ELEVATION: 66.200

**BEARING:** BEARINGS ARE GRID, DERIVED FROM THE CAN-NET VRS NETWORK  
OBSERVATIONS ON NAD 83 CONTROL MONUMENTS 1977305 & 1960711, CENTRAL MERIDIAN, 76°39' W LONGITUDE WITH ZONE 18

**DRAWING NOTES**

- THIS DRAWING IS THE EXCLUSIVE PROPERTY OF THE MUNICIPAL INFRASTRUCTURE GROUP LTD (TMG). THE REPRODUCTION OF ANY PART WITHOUT PRIOR WRITTEN CONSENT FROM TMG IS STRICTLY PROHIBITED.
- THIS DRAWING IS TO BE READ AND UNDERSTOOD IN CONJUNCTION WITH ALL OTHER DRAWINGS AND DOCUMENTS APPLICABLE TO THIS PROJECT.
- THIS DRAWING IS NOT TO BE ISSUED FOR CONSTRUCTION UNTIL ALL REQUIRED PERMITS HAVE BEEN ISSUED.
- THE CONTRACTOR SHALL VERIFY ALL DIMENSIONS, ELEVATIONS, INVERTS AND DATA ON SITE AND REPORT ANY DISCREPANCIES OR OMISSIONS TO TMG 48 HOURS PRIOR TO ANY CONSTRUCTION.

**ABBREVIATIONS**

GENERAL:	PROPOSED	EXISTING	CONC	CONCRETE	HTW	TOP OF WALL	HDPE	HIGH DENSITY POLYETHYLENE
PROP	PROPOSED	EXISTING	CONC	CONCRETE	HTW	TOP OF WALL	HDPE	HIGH DENSITY POLYETHYLENE
EX	EXISTING	CONC	CONCRETE	HTW	TOP OF WALL	HDPE	HIGH DENSITY POLYETHYLENE	
STM	STORM	STM	STORM	HTW	TOP OF WALL	HDPE	HIGH DENSITY POLYETHYLENE	
SAN	SANITARY	SAN	SANITARY	HTW	TOP OF WALL	HDPE	HIGH DENSITY POLYETHYLENE	
WAT	WATER	WAT	WATER	HTW	TOP OF WALL	HDPE	HIGH DENSITY POLYETHYLENE	
PVC	POLYVINYL CHLORIDE	PVC	POLYVINYL CHLORIDE	HTW	TOP OF WALL	HDPE	HIGH DENSITY POLYETHYLENE	
AD	AREA DRAIN	AD	AREA DRAIN	HTW	TOP OF WALL	HDPE	HIGH DENSITY POLYETHYLENE	
TD	TRENCH DRAIN	TD	TRENCH DRAIN	HTW	TOP OF WALL	HDPE	HIGH DENSITY POLYETHYLENE	

SCALE: 1:200  
DATE: APRIL 2022  
DRAWN BY: B.G.  
DESIGNED BY: B.G.  
CHECKED BY: B.D.

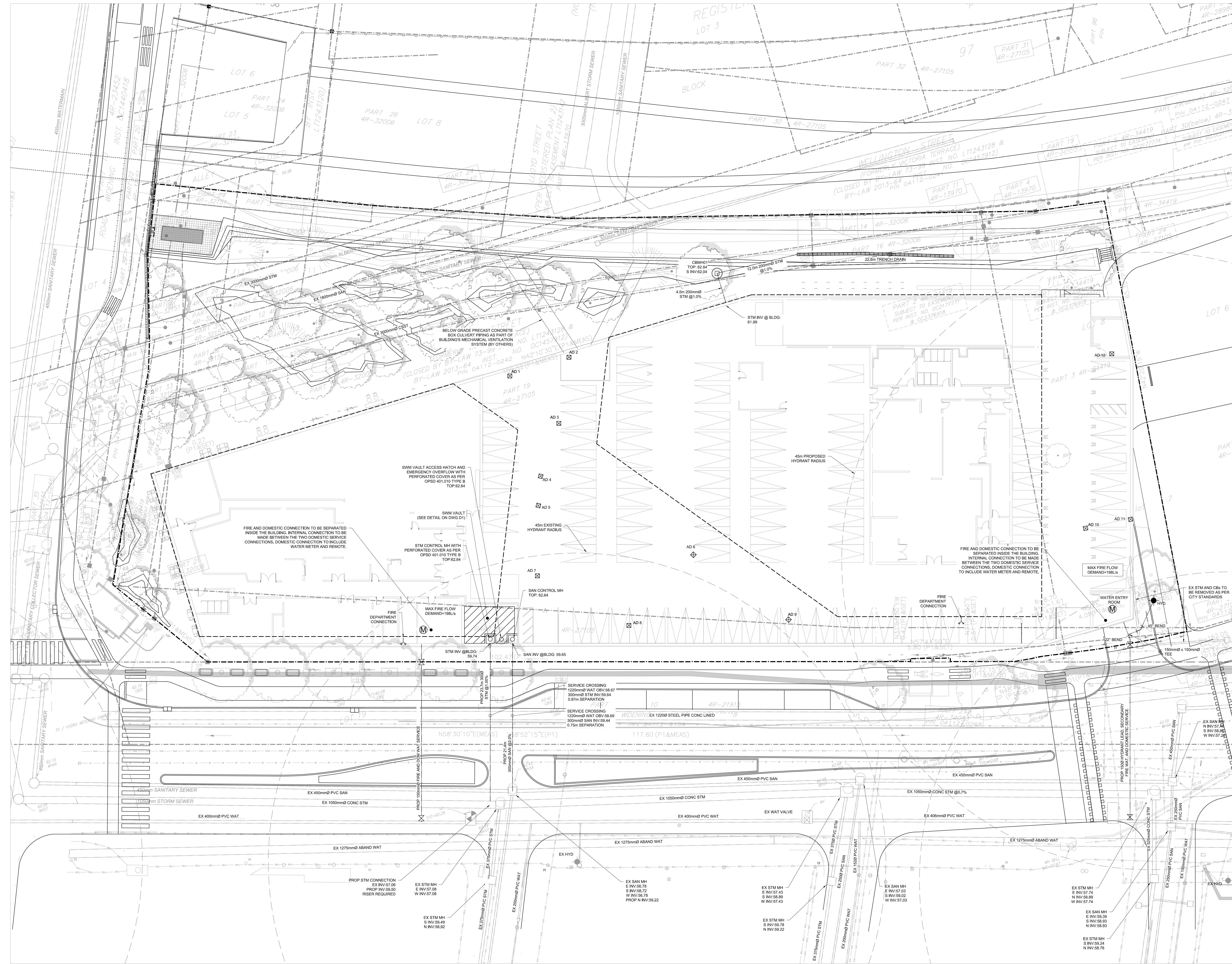
TMG PROJECT # 10399

DATE: APRIL 2022

DRAWN BY: B.G.

DESIGNED BY: B.G.

CHECKED BY: B.D.



Job Number 44220

TITLE

**SERVICING PLAN**

SHEET NUMBER