

ISSUED FOR APPROVALS - NOT FOR CONSTRUCTION

2022 - 11 - 09



G SERIES SHEET LIST							
SHEET NUMBER	SHEET NAME	ISSUED FOR OP/2B/SPA 2022-04-22	ISSUED FOR 86% SD 2022-05-27	ISSUED FOR 100% SD 2022-06-10	ISSUED FOR 66% DD 2022-08-19	ISSUED FOR SPA RESUBMISSION 2022-11-09	ISSUED FOR NCC 99% FLUOTA 2022-11-09
G00-00	COVER AND SHEET LIST	•	•	•	•	•	•
G00-01	STANDARD ABBREVIATIONS, SYMBOLS & NOTES	•	•	•	•	•	•
G00-02	CONTEXT PLAN & STATISTICS	•	•	•	•	•	•
G01-01	SITE PLAN & STATISTICS	•	•	•	•	•	•

A SERIES SHEET LIST							
SHEET NUMBER	SHEET NAME	ISSUED FOR OP/2B/SPA 2022-04-22	ISSUED FOR 86% SD 2022-05-27	ISSUED FOR 100% SD 2022-06-10	ISSUED FOR 66% DD 2022-08-19	ISSUED FOR SPA RESUBMISSION 2022-11-09	ISSUED FOR NCC 99% FLUOTA 2022-11-09
A10-00A	LEVEL P2 FLOOR PLAN	•	•	•	•	•	•
A10-00B	LEVEL P1 FLOOR PLAN	•	•	•	•	•	•
A10-01	LEVEL 01 FLOOR PLAN	•	•	•	•	•	•
A10-02	LEVEL 02 FLOOR PLAN	•	•	•	•	•	•
A10-03	LEVEL 03 FLOOR PLAN	•	•	•	•	•	•
A10-04	LEVEL 04 FLOOR PLAN	•	•	•	•	•	•
A10-05	LEVEL 05 FLOOR PLAN	•	•	•	•	•	•
A10-06	LEVEL 06 FLOOR PLAN	•	•	•	•	•	•
A10-07	LEVEL 07-17 FLOOR PLAN	•	•	•	•	•	•
A10-08	LEVEL 18-31 FLOOR PLAN	•	•	•	•	•	•
A10-09	LEVEL 32-36 FLOOR PLAN	•	•	•	•	•	•
A10-10	MECH PENTHOUSE PLANS	•	•	•	•	•	•
A10-11	ROOF PLAN	•	•	•	•	•	•
A20-01	OVERALL NORTH ELEVATION	•	•	•	•	•	•
A20-02	OVERALL SOUTH ELEVATION	•	•	•	•	•	•
A20-03	EAST BUILDING OVERALL ELEVATIONS	•	•	•	•	•	•
A20-04	WEST BUILDING OVERALL ELEVATIONS	•	•	•	•	•	•
A21-90	ENLARGED RENDERED ELEVATION	•	•	•	•	•	•
A22-01	OVERALL BUILDING SECTION	•	•	•	•	•	•
A23-01	PARTIAL BUILDING SECTIONS	•	•	•	•	•	•
A64-01	EXTERIOR FINISH SCHEDULE	•	•	•	•	•	•
A70-01	STREET VIEWS	•	•	•	•	•	•
A70-02	STREET VIEWS	•	•	•	•	•	•
A70-03	STREET VIEWS	•	•	•	•	•	•

SPA RESUBMISSION PDF 1 of 2

SPA RESUBMISSION PDF 2 of 2

ABBREVIATIONS LEGEND

NOTE 1: ABBREVIATIONS WHEN USED IN COMPOSITION MAY INCLUDE PERIODS FOR CLARIFICATION
NOTE 2: ABBREVIATIONS MAY BE DIFFERENT WHEN A PART OF A LEGEND

AC	AIR CONDITION(ING)(ED)	CW	COLD WATER PIPING/CHEMICAL WASTELINE	FRG	FIRE RESISTIVE GLASS	M	METER	R	THERMAL RESISTANCE, RADIUS, RISER	TC	TRAFFIC COATING
ACC	ACCESSIBLE			FRMG	FRAMING	M1	UNFRAMED MIRRORS	TEL	TELEPHONE	TEMP	TEMPORARY
ACM	ALUMINUM COMPOSITE MATERIAL	CWP	CEMENTITIOUS WOOD FIBER PANELS	FRTW	FIRE RETARDANT TREATED WOOD	M2	TILED MIRRORS	RBF	RUBBER BASE	TER	TERRAZZO
ACMU	ARCHITECTURAL CONCRETE MASONRY UNIT	CWS	CURTAIN WALL SYSTEM	FSS	FOLDING SHOWER SEATS	MAINT	MAINTENANCE	RCS	RUBBER SPORTS FLOORING	TH	TOWEL HOOKS
ACP	LARGE SCALE ACOUSTIC CEILING PANEL	D	DEEP, DEPTH, PENNY (NAIL)	FT	FOOT (FEET) FIRE TREATED	MATL	MATERIAL	RCPTN	REFLECTED CEILING PLAN	THK	THICK
ACST	ACOUSTIC(AL)	DBL	DOUBLE	FTG	FOOTING	MAX	MAXIMUM	RD	ROOF DRAIN	TI	TENANT IMPROVEMENT
ACT	ACOUSTICAL PANEL CEILING SYSTEM	DEG	DEGREE	FURF	FURRING	MB	MARKER BOARD	REC	RECESSED	TKBD	TACKBOARD
AD	AREA DRAIN	DEMO	DEMOLISH, DEMOLITION	FURN	FURNISH, FURNITURE	MBWC	MARKER BOARD WALL COVERING	REF	REFERENCE, REFRIGERATOR	TOPO	TOPOGRAPHY, TOPOGRAPHIC
ADJ	ADJUSTABLE/ ADJACENT	DEPT	DEPARTMENT	FV	FUTURE	MCP	METAL CEILING PANEL	REINF	REINFORCE, REINFORCING	TPG	TEMPERED GLASS
AFC	ABOVE FINISHED COUNTER	DF	DRINKING FOUNTAIN			MDF	MEDIUM DENSITY FIBREBOARD	REQ(D)	REQUIRE, REQUIRED	TRTD	TREATED
AFF	ABOVE FINISHED FLOOR	DIA	DIAMETER (EXTERIOR)	GA	GAGE	MECH	MECHANICAL	RES	RESINIOUS FLOORING	TS	TUBE STEEL
AFG	ABOVE FINISHED GRADE	DIAG	DIAGONAL	GALV	GALVANIZED	MEL	MELAMINE	REQU	REQUIRE, REQUIRED	TTD	TOILET TISSUE DISPENSER
AG	ALUMINUM GUARD	DIFF	DIFFUSER/ DIFFERENCE	GB	GRAB BAR	MEMB	MEMBRANE	RESIL	RESILIENT	TV	TELEVISION
AGGR	AGGREGATE	DISP	DIMENSION	GBS	GYPSPUM BOARD - SHAFT LINER	MEP	MECHANICAL, ELECTRICAL, PLUMBING, FIRE PROTECTION	REV	REVISION	TYP	TYPICAL
AHU	AIR HANDLING UNIT	DIV	DIVISION	GBX	FIRE RATED GYPSPUM BOARD TYPE X	MEZZ	MEZZANINE	RF	ROOF	U	HEAT TRANSFER COEFFICIENT
ALT	ALTERNATE	DJ	DRY JOINT	GEN	GENERAL	MFR	MANUFACTURER	RFT	RUBBER TREADS, RISERS AND LANDINGS	U/S	UNDERSIDE
ALUM	PREFINISHED ALUMINUM ANOD	DL	DEAD LOAD	GFRC	GLASS FIBER REINFORCED CONCRETE	MFG	GLASS MARKER BOARD	RH	RIGHT HAND	UH	UNIT HEATER
ANOD	ANODIZE(D)	DR	DOOR/ DRAIN	GFRG	GLASS FIBER REINFORCED GYPSPUM	MGL	MAGNETIC GLASS MARKER BOARD	RM	ROOM	UL	UNDERWRITER'S LABORATORIES
APPROX	APPROXIMATE	DS	DOWNSPOUT	GG-1	STRUCTURAL GLASS WINDSCREEN WITH BASE SHOE ATTACHMENT	MH	MANHOLE	RO	ROUGH OPENING	UNEX	UNEXCAVATED
AR	AREA RUG	DW	DISHWASHER	GG-2	FRAMED GLASS PRIVACY SCREEN	MHO	MAGNETIC HOLD OPEN	ROW	RIGHT OF WAY	UNFIN	UNFINISHED
ARCH	ARCHITECT(URAL), ARCHITECT	DWS-1	STAINLESS STEEL DOME BOARD			MIN	MINIMUM	RSF	RESILIENT SHEET FLOORING	UNO	UNLESS NOTED OTHERWISE
ARGB	ABUSE-RESISTANT GYPSPUM BOARD	DWS-2	TACTILE WARNING TILING			MISC	MISCELLANEOUS	RSSF	RESILIENT SAFETY SHEET FLOORING	UR	URNAL
AS	ALUMINUM STOREFRONT SCREENS	DWS-3	VISUAL WARNING TAPE			MM	MILLIMETER	RVL	REVEAL	UTIL	UTILITY
ASPH	ASPHALT	E	EAST	GL	GLASS	MO	MASONRY OPENING	RWB	RUBBER TILE FLOOR	VB	VINYL BASE
AUTO	AUTOMATIC	EA	EACH	GL BLK	GLASS BLOCK	MOH	MOP HOLDER	RWB-B	DUAL ROLLER WINDOW SHADES AND BLACKOUT BLINDS, MANUAL OPERATED	VCT	VINYL COMPOSITION TILE
AVB	AIR/VAPOUR BARRIER	EA	EACH	GL-LK	GLASS LOCKERS	MTL	METAL			VENT	VENTILATION
AWCP	ACOUSTIC WOOD CEILING PANEL BOARD	ECT	ELECTRO CONDUCTIVE TILE	GLU LAM	GLUED LAMINATED WOOD	MTL-LK	METAL LOCKERS			VERT	VERTICAL
AWP	ACoustic WOOD CEILING PANEL	EHD	ELECTRIC HAND DRYER	GR-LN	GRADE LINE	MTL-TP	METAL TOILET PARTITIONS AND URINAL SCREENS			VEST	VESTIBULE
AWP	LARGE SCALE ACOUSTIC WOOD CEILING PANEL	EHS	EXTERIOR INSULATION & FINISH SYSTEM	GRFL	GRADE FLOOR	MTL-G	METAL TOILET PARTITIONS AND URINAL SCREENS			VIF	VERIFY IN FIELD
AWT	ACOUSTICAL WALL TREATMENT	GT	GREASE TRAP	GRFL	GRADE FLOOR	MTL-G	METAL GRILLE PANEL			VNR	VENEER
AWWP	ACOUSTIC WOOD WALL PANEL	GW	STANDARD GYPSPUM BOARD	GT	GREASE TRAP	MWP	METAL WALL PANEL			VOL	VOLUME
		GWT	GLASS WALL TILES	GW	GLASS WALL TILES					VS	VISION STRIPS
		GYP	GYPSPUM							VWC	VINYL WALL COVERING
		EL	ELEVATION			N	NORTH			W	WEST
		ELAST	ELASTOMERIC			NA	NOT AVAILABLE			W	WITH
		ELEC	ELECTRIC(AL)			NIC	NOT IN CONTRACT			WO	WITHOUT
		ELEV	ELEVATOR			NO	NUMBER			WCSS	SOLID SURFACE WALL COVERING
		EMER	EMERGENCY			H	HIGH			WCV	WALL COVERING
		EMER SHR	EMERGENCY SHOWER			HB	HOSE BIBB			WD	NATURAL WOOD AND VENEER FINISH
		EMR	EMERGENCY SHOWER			HC	HOLLOW CORE			WD-LK	WOOD VENEER LOCKERS
		ENGR	ELEVATOR MACHINE ROOM			HDL	HIGH DENSITY COMPOSITE PANEL			WD-TP	WOOD VENEER TOILET PARTITIONS AND URINAL SCREENS
		ENR	ENGINEER			HDW	HARDWARE			WG	WALL GUARD
		ENR	ENGINEER			HDWD	HARDWOOD			WH	WATER HEATER
		ENTR	ENTRANCE			HM	HOLLOW METAL			WI	WROUGHT IRON
		EO	ELECTRIC OUTLET			HMS	HOLLOW METAL DOORS AND FRAMES			WMP	WIRE MESH PARTITION
		EOS	EDGE OF SLAB			HORIZ	HORIZONTAL			WPG	WIRE MESH PARTITION
		EP	ELECTRICAL PANEL			HPL	HIGH PRESSURE LAMINATE			WPM	MEMBRANE WATERPROOFING
		EPFC	EPOXY FLOOR COATING			HPT	HIGH POINT			WR	WASTE RECEPTACLE
		EQ	EQUAL			HS	HEAT STRENGTHENED GLASS			WSCOT	WAINSCOT
		EQUIP	EQUIPMENT			HSKPG	HOUSEKEEPING			WT	WEIGHT
		ETC	ET CETERA			HSLG	HEAT STRENGTHENED LAMINATED SAFETY GLASS			WW	WINDOW WALL
		ETZ	EPOXY TERRAZZO FLOORING			HT	HEIGHT			WWM	WELDED WIRE FABRIC
		EW	EACH WAY			HVAC	HEATING, VENTILATION, AIR CONDITIONING			WWS	WELDED WIRE MESH
		EWC	ELECTRIC WATER COOLER			HW	HOT WATER			X	BY
		EXH	EXHAUST			HWC	HIGH IMPACT WALL PROTECTION				
		EXIST	EXISTING			ID	INSIDE DIAMETER				
		EXP	EXPANSION			IFRM	INTUMESCENT MASTIC				
		EXT	EXTERIOR, EXTERNAL			IGU	INSULATED GLASS UNIT				
		CFM	CUBIC FEET PER MINUTE			INCAND	INCANDESCENT				
		CFMF	COLD-FORMED METAL FRAMING			INSUL	INSULATION				
		CG	CORNER GUARD			INT	INTERIOR				
		CGS	COMPOSITE GLASS SURFACING FABRICATION			INV	INVERT				
		CH	CHANNEL			JAN CLO	JANITOR'S CLOSET				
		CHK	COAT HOOKS			PLAS	PLASTER				
		CI	CAST IRON, CURB INLET			PLBG	PLUMBING				
		CIP	CAST-IN-PLACE			PLYWD	PLYWOOD				
		CJ	CONTROL JOINT			POL	POLISHED				
		CL	CENTER LINE			PREFAB	PREFABRICATE(D)				
		CLF	CLEAR FINISH			PROJ	PROJECT				
		CLG	CEILING			PROP	PROPERTY				
		CLO	CLOSET			PSD	PIT SCUPPER DRAIN				
		CLR	CLEAR			PSH	PURSE SHELF				
		CM	CENTIMETER			PSS	POLYMER BASED SOLID SURFACE				
		CMT	CERAMIC MOSAIC TILE			PT	PAINT(ING)				
		CMU	CONCRETE MASONRY UNIT			PTD	PAPER TOWEL DISPENSER				
		CO	CLEANOUT			PTN	PARTITION				
		COL	COLUMN			PVC	POLYVINYL CHLORIDE				
		CONC	CONCRETE			PVG	PAVING				
		CONF	CONFERENCE			PWC	POWDER COAT FINISH				
		CONT	CONTINUOUS			L	LONG, LENGTH				
		COORD	COORDINATE			LAM	LAMINATE(D)				
		COR MTL	CORRUGATED METAL			LAV	LAVATORY				
		CORR	CORRIDOR			LH	LEFT HAND				
		CP	CARPET			LIB	LIBRARY				
		CPT	CARPET TILES			LIN	LINOLEUM FLOORING				
		CQS	COMPOSITE QUARTZ SURFACING FABRICATION			LK	LOCKER				
		CR	CRASH RAIL			LL	LIVE LOAD				
		CT	CERAMIC TILE			LOC	LOCATION				
		CTR	CENTER/CONTOUR			LONG	LONGITUDINAL				
		CU	CUBIC			LPT	LOW POINT				
						LQR	LACQUER FINISH				
						LT	LIGHT				
						LQ	LACQUER FINISH				
						LTPG	LAMINATED TEMPERED SAFETY GLASS				
						LTV	LUXURY VINYL TILE				

M	METER	R	THERMAL RESISTANCE, RADIUS, RISER	TC	TRAFFIC COATING
M1	UNFRAMED MIRRORS	TEL	TELEPHONE	TEMP	TEMPORARY
M2	TILED MIRRORS	TER	TERRAZZO	TH	TOWEL HOOKS
MACH	MACHINE	THK	THICK	TI	TENANT IMPROVEMENT
MAINT	MAINTENANCE	TKBD	TACKBOARD	TOPO	TOPOGRAPHY, TOPOGRAPHIC
MATL	MATERIAL	TPG	TEMPERED GLASS	TRTD	TREATED
MAX	MAXIMUM	TRTD	TREATED	TS	TUBE STEEL
MB	MARKER BOARD	TTD	TOILET TISSUE DISPENSER	TV	TELEVISION
MBWC	MARKER BOARD WALL COVERING	TYP	TYPICAL	U	HEAT TRANSFER COEFFICIENT
MCP	METAL CEILING PANEL	U/S	UNDERSIDE	UH	UNIT HEATER
MDF	MEDIUM DENSITY FIBREBOARD	UL	UNDERWRITER'S LABORATORIES	UNEX	UNEXCAVATED
MECH	MECHANICAL	UNFIN	UNFINISHED	UNO	UNLESS NOTED OTHERWISE
MEL	MELAMINE	UR	URNAL	UTIL	UTILITY
MEMB	MEMBRANE	UR	URNAL	UTIL	UTILITY
MEP	MECHANICAL, ELECTRICAL, PLUMBING, FIRE PROTECTION	UR	URNAL	UTIL	UTILITY
MEZZ	MEZZANINE	UR	URNAL	UTIL	UTILITY
MFR	MANUFACTURER	UR	URNAL	UTIL	UTILITY
MG	GLASS MARKER BOARD	UR	URNAL	UTIL	UTILITY
MGL	MAGNETIC GLASS MARKER BOARD	UR	URNAL	UTIL	UTILITY
MH	MANHOLE	UR	URNAL	UTIL	UTILITY
MHO	MAGNETIC HOLD OPEN	UR	URNAL	UTIL	UTILITY
MIN	MINIMUM	UR	URNAL	UTIL	UTILITY
MISC	MISCELLANEOUS	UR	URNAL	UTIL	UTILITY
MM	MILLIMETER	UR	URNAL	UTIL	UTILITY
MO	MASONRY OPENING	UR	URNAL	UTIL	UTILITY
MOH	MOP HOLDER	UR	URNAL	UTIL	UTILITY
MTL	METAL	UR	URNAL	UTIL	UTILITY
MTL-LK	METAL LOCKERS	UR	URNAL	UTIL	UTILITY
MTL-TP	METAL TOILET PARTITIONS AND URINAL SCREENS	UR	URNAL	UTIL	UTILITY
MTL-G	METAL GRILLE PANEL	UR	URNAL	UTIL	UTILITY
MWP	METAL WALL PANEL	UR	URNAL	UTIL	UTILITY
N	NORTH	UR	URNAL	UTIL	UTILITY
NA	NOT AVAILABLE	UR	URNAL	UTIL	UTILITY
NIC	NOT IN CONTRACT	UR	URNAL	UTIL	UTILITY
NO	NUMBER	UR	URNAL	UTIL	UTILITY
NOM	NOMINAL	UR	URNAL	UTIL	UTILITY
NTS	NOT TO SCALE	UR	URNAL	UTIL	UTILITY
O/O	OUT TO OUT	UR	URNAL	UTIL	UTILITY
OC	ON CENTER	UR	URNAL	UTIL	UTILITY
OD	OUTSIDE DIAMETER	UR	URNAL	UTIL	UTILITY
OF/CI	OWNER FURNISHED, CONTRACTOR INSTALLED	UR	URNAL	UTIL	UTILITY
OF/OI	OWNER FURNISHED, OWNER INSTALLED	UR	URNAL	UTIL	UTILITY
OFF	OFFICE	UR	URNAL	UTIL	UTILITY
OPH	OPENING HAND	UR	URNAL	UTIL	UTILITY
OPNG	OPENING	UR	URNAL	UTIL	UTILITY
OPP	OPPOSITE	UR	URNAL	UTIL	UTILITY
ORD	OVERFLOW ROOF DRAIN	UR	URNAL	UTIL	UTILITY
PA	PUBLIC ADDRESS	UR	URNAL	UTIL	UTILITY
PAR	PARAPET, PARALLEL	UR	URNAL	UTIL	UTILITY
PCC	PRE-CAST CONCRETE	UR	URNAL	UTIL	UTILITY
PCT	PROCELAN TILE	UR	URNAL	UTIL	UTILITY
PCTZ	PRE-CAST EPOXY TERRAZZO FLOORING	UR	URNAL	UTIL	UTILITY
PDO	POWER DOOR OPERATOR	UR	URNAL	UTIL	UTILITY
PERF	PERFORATED	UR	URNAL	UTIL	UTILITY
PERP	PERPENDICULAR	UR	URNAL	UTIL	UTILITY
PH-LK	PHENOLIC LOCKERS	UR	URNAL	UTIL	UTILITY
PH-TP	PHENOLIC TOILET PARTITIONS AND URINAL SCREENS	UR	URNAL	UTIL	UTILITY
PLAM	PLASTIC LAMINATE	UR	URNAL	UTIL	UTILITY
PLAM-LK	PLASTIC LAMINATE LOCKERS	UR	URNAL	UTIL	UTILITY
PLAM-TP	PLASTIC LAMINATE TOILET PARTITIONS AND URINAL SCREENS	UR	URNAL	UTIL	UTILITY
PLAS	PLASTER	UR	URNAL	UTIL	UTILITY
PLBG	PLUMBING	UR	URNAL	UTIL	UTILITY
PLYWD	PLYWOOD	UR	URNAL	UTIL	UTILITY
POL	POLISHED	UR	URNAL	UTIL	UTILITY
PREFAB	PREFABRICATE(D)	UR	URNAL	UTIL	UTILITY
PROJ	PROJECT	UR	URNAL	UTIL	UTILITY
PROP	PROPERTY	UR	URNAL	UTIL	UTILITY
PSD	PIT SCUPPER DRAIN	UR	URNAL	UTIL	UTILITY
PSH	PURSE SHELF	UR	URNAL	UTIL	UTILITY
PSS	POLYMER BASED SOLID SURFACE	UR	URNAL	UTIL	UTILITY
PT	PAINT(ING)	UR	URNAL	UTIL	UTILITY
PTD	PAPER TOWEL DISPENSER	UR	URNAL	UTIL	UTILITY
PTN	PARTITION	UR	URNAL	UTIL	UTILITY
PVC	POLYVINYL CHLORIDE	UR	URNAL	UTIL	UTILITY
PVG	PAVING	UR	URNAL	UTIL	UTILITY
PWC	POWDER COAT FINISH	UR	URNAL	UTIL	UTILITY
L	LONG, LENGTH	UR	URNAL	UTIL	UTILITY
LAM	LAMINATE(D)	UR	URNAL	UTIL	UTILITY
LAV	LAVATORY	UR	URNAL	UTIL	UTILITY
LH	LEFT HAND	UR	URNAL	UTIL	UTILITY
LIB	LIBRARY	UR	URNAL	UTIL	UTILITY
LIN	LINOLEUM FLOORING	UR	URNAL	UTIL	UTILITY
LK	LOCKER	UR	URNAL	UTIL	UTILITY
LL	LIVE LOAD	UR	URNAL	UTIL	UTILITY
LOC					

CONSULTANTS

- civil**
TMIG
8800 Dufferin St., Suite 200, Vaughan, ON L4K 0C5
- STRUCTURAL**
RJC Engineers
1545 Carlin Ave., Suite 304, Ottawa, ON K1Z 8P9
- Smith-Anderson**
1600 Carling Ave., Suite 530, Ottawa, ON K1Z 1G3
- LANDSCAPE**
PFS Studio
1777 W 3rd Ave., Vancouver, BC V6J 1K1
- CONSULTANT**
Two Row Architect
1804 6th Line, Oshawa, ON N4A 1M0
- CONTRACTOR**
EllisDon
2680 Queensview Dr., Ottawa, ON K2B 8J9

STAMP

PROJECT

LEBRETON LIBRARY PARCEL
665 Albert St
Ottawa, ON
Canada



DREAM
30 Adelaide St. E., Suite 301,
Toronto, ON M5C 3H1
KEYPLAN



ISSUE CHART

NO.	DATE	DESCRIPTION
1	2022-04-23	ISSUED FOR SPA / ZBA / SPA
2	2022-05-27	ISSUED FOR 66% SD
3	2022-06-10	ISSUED FOR 100% SD
4	2022-08-19	ISSUED FOR 66% SD
5	2022-09-30	ISSUED FOR 100% SD
6	2022-11-09	ISSUED FOR SPA RESUBMISSION
7	2022-11-09	ISSUED FOR NCC 99% FLUGTA

ISSUED FOR APPROVALS - NOT FOR CONSTRUCTION 2022-11-09

ELEVATIONS LEGEND

- M-01 PREFINISHED ALUMINUM PLATE (COLOUR 1)
- M-02 PREFINISHED ALUMINUM PLATE (COLOUR 2)
- M-03 PREFINISHED ALUMINUM PLATE (COLOUR 3)
- M-04 PREFINISHED ALUMINUM PLATE (COLOUR 4)
- M-05 PREFINISHED ALUMINUM PLATE (COLOUR 5)
- M-06 PREFINISHED ALUMINUM PLATE (COLOUR 6)
- M-07 PREFINISHED ALUMINUM PLATE (COLOUR 7)

- STN-01 GRANITE BASE
- IGU-01A VISION GLAZING (NOTE 1)
- IGU-02A VISION GLAZING (NOTE 1)
- IGU-01B SPANDREL GLAZING (NOTE 1)
- IGU-02B SPANDREL GLAZING (NOTE 1)

- GG-01 WIND & NOISE BARRIER, VISION GLASS 1.8M HIGH (NOTE 1)
- GG-02 PRIVACY SCREEN, PATTERNED GLASS (NOTE 1)

- LVR-01 PREFINISHED STORM-RESISTANT LOUVER HORIZONTAL
- LVR-02 PREFINISHED STORM-RESISTANT LOUVER VERTICAL

- FIN-01 PREFINISHED ALUMINUM FIN, GLAZED/OPAQUE BEHIND, AS NOTED (COLOUR M-06)

- SF-01 WESTERN HEMLOCK EXTERIOR WOOD SOFFIT
- SF-02 PREFINISHED ALUMINUM PLATE SOFFIT (MILL FINISH)
- SF-03 PREFINISHED ALUMINUM PLATE SOFFIT (COLOUR M-07)

- WW-01 ALUMINUM EXTRUSION CHANNEL PODIUM (M-06)
- WW-02 ALUMINUM EXTRUSION CHANNEL TOWER REVEAL (M-07)
- WW-03 ALUMINUM EXTRUSION CHANNEL TOWER (M-07)

- CW-01 PREFINISHED ALUMINUM MULLION (COLOUR M-06)
- CH-01 DECORATIVE METAL CHANNEL (COLOUR M-07)

- BIPV-01 BUILDING INTEGRATED PHOTOVOLTAIC PANELS

- AG-01 PREFINISHED ALUMINUM PLATE, MILL FINISH, CUSTOM PERFORATED PICKET GUARD (COLOUR M-07)
- AG-02

NOTE

1. REFER TO A70 SERIES BIRD COLLISION DETERRENCE DRAWINGS FOR BIRD COLLISION DETERRENCE STRATEGIES AND ASSOCIATED EXTENTS



1 NORTH ELEVATION
1:200

OVERALL NORTH ELEVATION

SHEET NUMBER

A20-01

CONSULTANTS

- civil**
- TMIG**
8800 Dufferin St., Suite 200, Vaughan, ON L4K 0C5
- RJC Engineers**
1545 Carlin Ave., Suite 304, Ottawa, ON K1Z 8P9
- Smith+Anderson**
1600 Carling Ave., Suite 530, Ottawa, ON K1Z 1G3
- PFS Studio**
1777 W 3rd Ave., Vancouver, BC V6J 1K7
- Two Row Architect**
1804 6th Line, Oshawa, ON N4A 1M0
- EllisDon**
2680 Queensview Dr., Ottawa, ON K2B 8J9

STAMP

PROJECT

LEBRETON LIBRARY PARCEL
665 Albert St
Ottawa, ON
Canada



DREAM
30 Adelaide St. E., Suite 301,
Toronto, ON M5C 3H1
KEYPLAN

ISSUE CHART

NO.	DATE	DESCRIPTION
1	2022-04-23	ISSUED FOR SPA / ZBA / SPA
2	2022-05-27	ISSUED FOR 66% SD
3	2022-06-10	ISSUED FOR 100% SD
4	2022-08-19	ISSUED FOR 66% DD
5	2022-09-30	ISSUED FOR 100% DD
6	2022-11-09	ISSUED FOR SPA RESUBMISSION
7	2022-11-09	ISSUED FOR NCC 99% FLUGTA

ELEVATIONS LEGEND

- M-01 PREFINISHED ALUMINUM PLATE (COLOUR 1)
- M-02 PREFINISHED ALUMINUM PLATE (COLOUR 2)
- M-03 PREFINISHED ALUMINUM PLATE (COLOUR 3)
- M-04 PREFINISHED ALUMINUM PLATE (COLOUR 4)
- M-05 PREFINISHED ALUMINUM PLATE (COLOUR 5)
- M-06 PREFINISHED ALUMINUM PLATE (COLOUR 6)
- M-07 PREFINISHED ALUMINUM PLATE (COLOUR 7)
- STN-01 GRANITE BASE
- IGU-01A VISION GLAZING (NOTE 1)
- IGU-02A VISION GLAZING (NOTE 1)
- IGU-01B SPANDREL GLAZING (NOTE 1)
- IGU-02B SPANDREL GLAZING (NOTE 1)
- GG-01 WIND & NOISE BARRIER, VISION GLASS 1.8M HIGH (NOTE 1)
- GG-02 PRIVACY SCREEN, PATTERNED GLASS (NOTE 1)
- LVR-01 PREFINISHED STORM-RESISTANT LOUVER HORIZONTAL
- LVR-02 PREFINISHED STORM-RESISTANT LOUVER VERTICAL
- FIN-01 PREFINISHED ALUMINUM FIN, GLAZED/OPAQUE BEHIND, AS NOTED (COLOUR M-06)
- SF-01 WESTERN HEMLOCK EXTERIOR WOOD SOFFIT
- SF-02 PREFINISHED ALUMINUM PLATE SOFFIT (MILL FINISH)
- SF-03 PREFINISHED ALUMINUM PLATE SOFFIT (COLOUR M-07)
- WW-01 ALUMINUM EXTRUSION CHANNEL PODIUM (M-06)
- WW-02 ALUMINUM EXTRUSION CHANNEL TOWER REVEAL (M-07)
- WW-03 ALUMINUM EXTRUSION CHANNEL TOWER (M-07)
- CW-01 PREFINISHED ALUMINUM MULLION (COLOUR M-06)
- CH-01 DECORATIVE METAL CHANNEL (COLOUR M-07)
- BIPV-01 BUILDING INTEGRATED PHOTOVOLTAIC PANELS
- AG-01 PREFINISHED ALUMINUM PLATE, MILL FINISH, CUSTOM PERFORATED PICKET GUARD (COLOUR M-07)
- AG-02

NOTE
1. REFER TO A70 SERIES BIRD COLLISION DETERRENCE DRAWINGS FOR BIRD COLLISION DETERRENCE STRATEGIES AND ASSOCIATED EXTENTS



1 SOUTH ELEVATION
1:200

Job Number _____
TITLE _____

OVERALL SOUTH ELEVATION

SHEET NUMBER

A20-02

CONSULTANTS

- civil**
TMIG
8800 Dufferin St., Suite 200, Vaughan, ON L4K 0C5
- STRUCTURAL**
RJC Engineers
1545 Carlin Ave., Suite 304, Ottawa, ON K1Z 8P9
- Smith+Anderson**
1600 Carling Ave., Suite 530, Ottawa, ON K1Z 1G3
- LANDSCAPING**
PFS Studio
1777 W 3rd Ave., Vancouver, BC V6J 1K1
- CONSULTANT**
Two Row Architect
1804 6th Line, Oshawa, ON N4A 1M0
- CONTRACTOR**
EllisDon
2680 Queensview Dr., Ottawa, ON K2B 8J9

STAMP

PROJECT

**LEBRETON LIBRARY
PARCEL**
665 Albert St
Ottawa, ON
Canada



DREAM
30 Adelaide St. E., Suite 301,
Toronto, ON M5C 3H1
KEYPLAN



ISSUE CHART

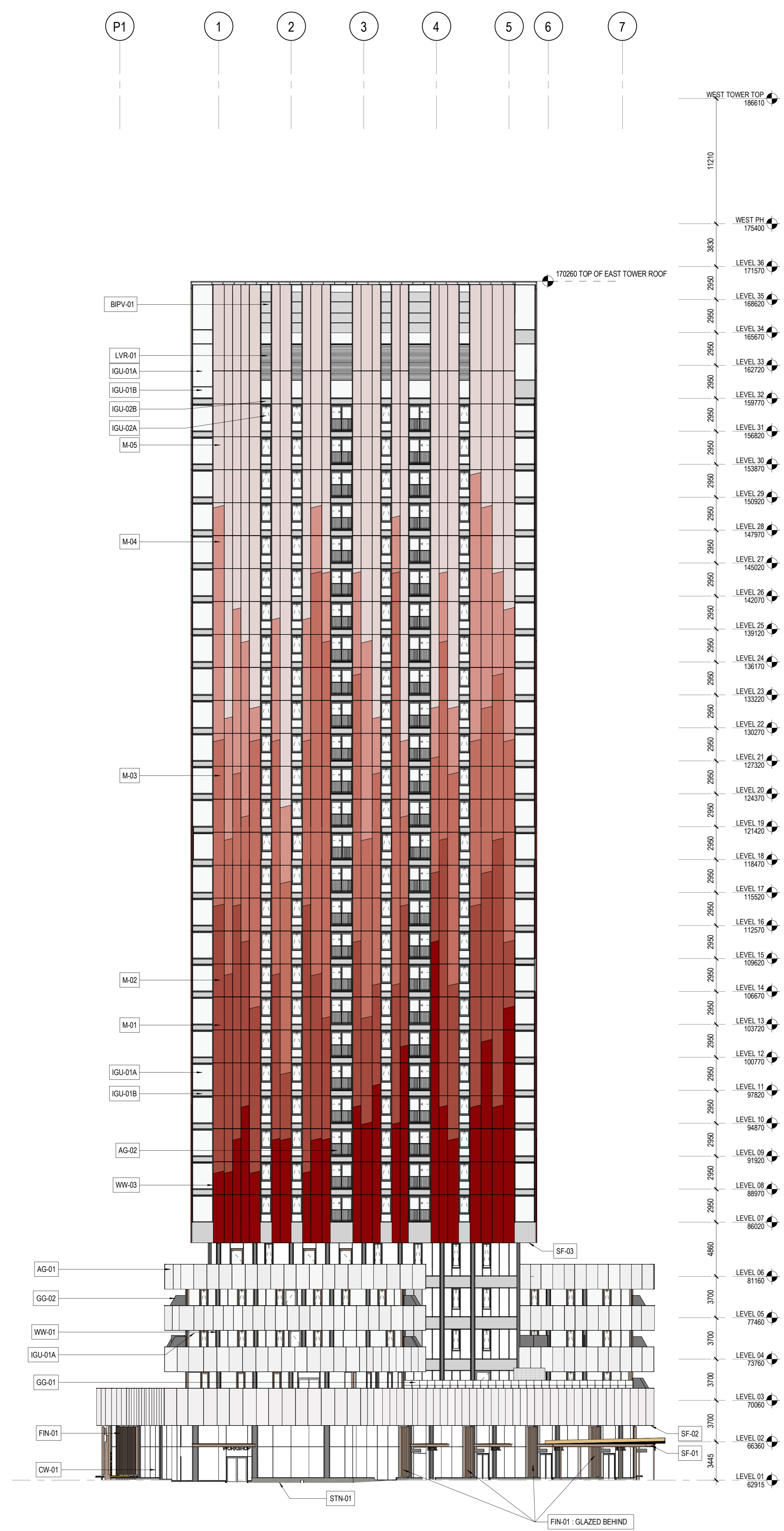
NO.	DATE	DESCRIPTION
1	2022-04-29	ISSUED FOR SPA / ZBA / SPA
2	2022-05-27	ISSUED FOR 66% SD
3	2022-06-10	ISSUED FOR 100% SD
4	2022-08-19	ISSUED FOR 66% SD
5	2022-09-30	ISSUED FOR 100% SD
6	2022-11-09	ISSUED FOR SPA RESUBMISSION
7	2022-11-09	ISSUED FOR NCC 99% FLIGHT

ISSUED FOR APPROVALS - NOT FOR CONSTRUCTION 2022 - 11 - 09

ELEVATIONS LEGEND

- M-01 PREFINISHED ALUMINUM PLATE (COLOUR 1)
- M-02 PREFINISHED ALUMINUM PLATE (COLOUR 2)
- M-03 PREFINISHED ALUMINUM PLATE (COLOUR 3)
- M-04 PREFINISHED ALUMINUM PLATE (COLOUR 4)
- M-05 PREFINISHED ALUMINUM PLATE (COLOUR 5)
- M-06 PREFINISHED ALUMINUM PLATE (COLOUR 6)
- M-07 PREFINISHED ALUMINUM PLATE (COLOUR 7)
- STN-01 GRANITE BASE
- IGU-01A VISION GLAZING (NOTE 1)
- IGU-02A VISION GLAZING (NOTE 1)
- IGU-01B SPANDREL GLAZING (NOTE 1)
- IGU-02B SPANDREL GLAZING (NOTE 1)
- GG-01 WIND & NOISE BARRIER, VISION GLASS 1.8M HIGH (NOTE 1)
- GG-02 PRIVACY SCREEN, PATTERNED GLASS (NOTE 1)
- LVR-01 PREFINISHED STORM-RESISTANT LOUVER HORIZONTAL
- LVR-02 PREFINISHED STORM-RESISTANT LOUVER VERTICAL
- FIN-01 PREFINISHED ALUMINUM FIN, GLAZED/OPAQUE BEHIND, AS NOTED (COLOUR M-06)
- SF-01 WESTERN HEMLOCK EXTERIOR WOOD SOFFIT
- SF-02 PREFINISHED ALUMINUM PLATE SOFFIT (MILL FINISH)
- SF-03 PREFINISHED ALUMINUM PLATE SOFFIT (COLOUR M-07)
- WW-01 ALUMINUM EXTRUSION CHANNEL PODIUM (M-06)
- WW-02 ALUMINUM EXTRUSION CHANNEL TOWER REVEAL (M-07)
- WW-03 ALUMINUM EXTRUSION CHANNEL TOWER (M-07)
- CW-01 PREFINISHED ALUMINUM MULLION (COLOUR M-06)
- CH-01 DECORATIVE METAL CHANNEL (COLOUR M-07)
- BIPV-01 BUILDING INTEGRATED PHOTOVOLTAIC PANELS
- AG-01 PREFINISHED ALUMINUM PLATE, MILL FINISH, CUSTOM PERFORATED PICKET GUARD (COLOUR M-07)
- AG-02

NOTE
1. REFER TO A70 SERIES BIRD COLLISION DETERRENCE DRAWINGS FOR BIRD COLLISION DETERRENCE STRATEGIES AND ASSOCIATED EXTENTS

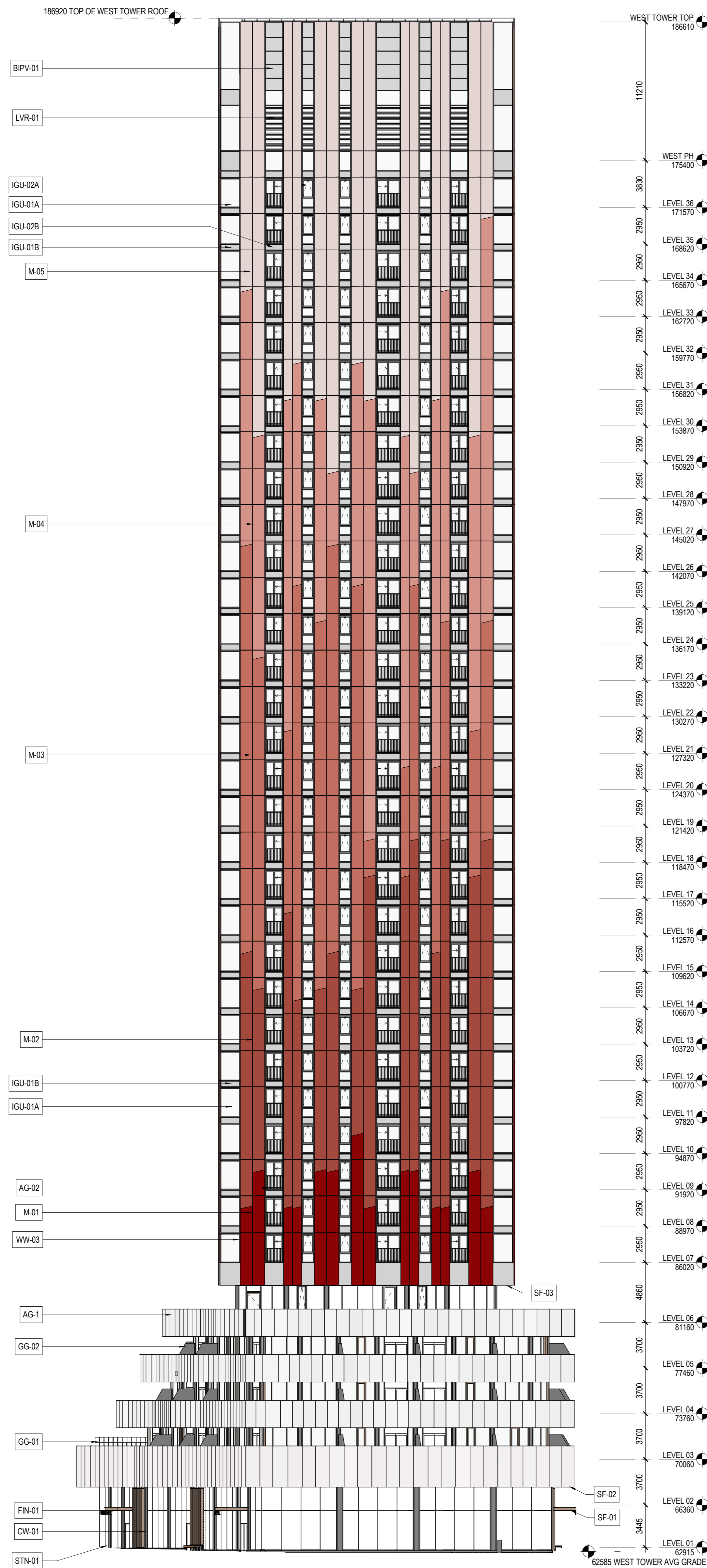


1 EAST BUILDING - WEST ELEVATION
1:200



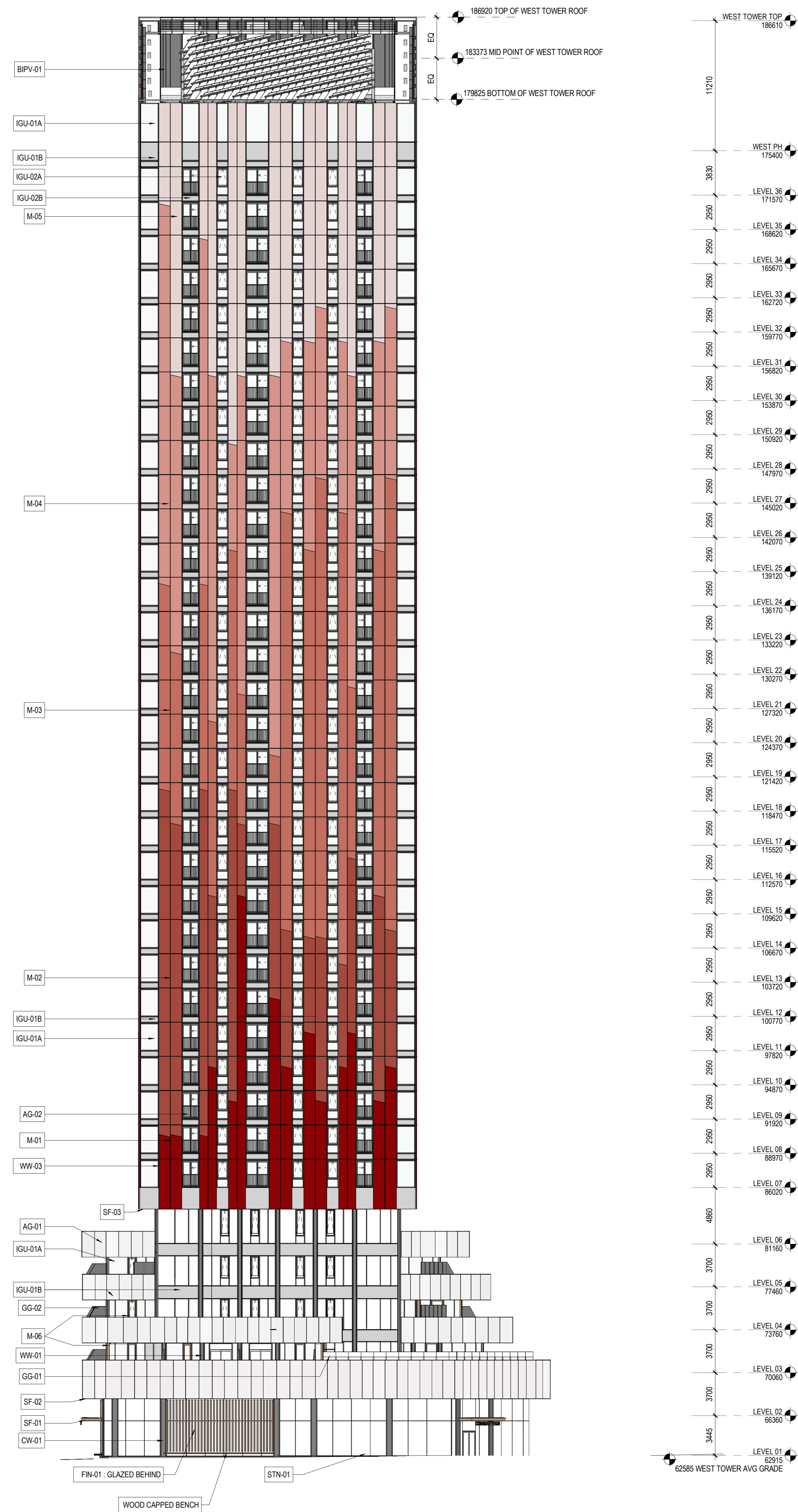
2 EAST BUILDING - EAST ELEVATION
1:200

P1 1 2 3 4 5 6 7
W1 W2 W3 W4 W5



1 WEST BUILDING - WEST ELEVATION
1:200

7 6 5 4 3 2 1
W5 W4 W3 W2 W1 P1



2 WEST BUILDING - EAST ELEVATION
1:200

ELEVATIONS LEGEND

- M-01 PREFINISHED ALUMINUM PLATE (COLOUR 1)
- M-02 PREFINISHED ALUMINUM PLATE (COLOUR 2)
- M-03 PREFINISHED ALUMINUM PLATE (COLOUR 3)
- M-04 PREFINISHED ALUMINUM PLATE (COLOUR 4)
- M-05 PREFINISHED ALUMINUM PLATE (COLOUR 5)
- M-06 PREFINISHED ALUMINUM PLATE (COLOUR 6)
- M-07 PREFINISHED ALUMINUM PLATE (COLOUR 7)

- STN-01 GRANITE BASE
- IGU-01A VISION GLAZING (NOTE 1)
- IGU-02A VISION GLAZING (NOTE 1)
- IGU-01B SPANDREL GLAZING (NOTE 1)
- IGU-02B SPANDREL GLAZING (NOTE 1)
- GG-01 WIND & NOISE BARRIER, VISION GLASS 1.8M HIGH (NOTE 1)
- GG-02 PRIVACY SCREEN, PATTERNED GLASS (NOTE 1)
- LVR-01 PREFINISHED STORM-RESISTANT LOUVER HORIZONTAL
- LVR-02 PREFINISHED STORM-RESISTANT LOUVER VERTICAL
- FIN-01 PREFINISHED ALUMINUM FIN, GLAZED/OPAQUE BEHIND, AS NOTED (COLOUR M-06)
- SF-01 WESTERN HEMLOCK EXTERIOR WOOD SOFFIT
- SF-02 PREFINISHED ALUMINUM PLATE SOFFIT (MILL FINISH)
- SF-03 PREFINISHED ALUMINUM PLATE SOFFIT (COLOUR M-07)
- WW-01 ALUMINUM EXTRUSION CHANNEL PODIUM (M-06)
- WW-02 ALUMINUM EXTRUSION CHANNEL TOWER REVEAL (M-07)
- WW-03 ALUMINUM EXTRUSION CHANNEL TOWER (M-07)
- CW-01 PREFINISHED ALUMINUM MULLION (COLOUR M-06)
- CH-01 DECORATIVE METAL CHANNEL (COLOUR M-07)
- BIPV-01 BUILDING INTEGRATED PHOTOVOLTAIC PANELS
- AG-01 PREFINISHED ALUMINUM PLATE, MILL FINISH, CUSTOM PERFORATED PICKET GUARD (COLOUR M-07)
- AG-02

NOTE
1. REFER TO A70 SERIES BIRD COLLISION DETERRENCE DRAWINGS FOR BIRD COLLISION DETERRENCE STRATEGIES AND ASSOCIATED EXTENTS

CONSULTANTS

- civil: TMIG (8800 Dufferin St., Suite 200, Vaughan, ON L4K 0C5)
- STRUCTURAL: RJC Engineers (1545 Carlin Ave., Suite 304, Ottawa, ON K1Z 8P9)
- Smith+Anderson (1600 Carling Ave., Suite 530, Ottawa, ON K1Z 1G3)
- LANDSCAPE: PFS Studio (1777 W 3rd Ave., Vancouver, BC V6J 1KJ)
- CONSULTANT: Two Row Architect (1804 6th Line, Chatham, ON N0A 1M0)
- CONTRACTOR: EllisDon (2890 Queensview Dr., Ottawa, ON K2B 8J9)

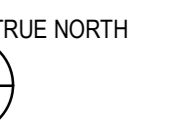
STAMP

PROJECT

LEBRETON LIBRARY
PARCEL
665 Albert St
Ottawa, ON
Canada



DREAM
30 Adelaide St. E., Suite 301,
Toronto, ON M5C 3H1
KEYPLAN



ISSUE CHART

NO.	DATE	DESCRIPTION
1	2022-04-23	ISSUED FOR SPA / ZBA / SPA
2	2022-05-27	ISSUED FOR 66% SD
3	2022-06-10	ISSUED FOR 100% SD
4	2022-08-19	ISSUED FOR 90% SD
5	2022-09-30	ISSUED FOR 100% DD
6	2022-11-09	ISSUED FOR SPA RESUBMISSION
7	2022-11-09	ISSUED FOR NCC 99% FLUGTA

ISSUED FOR APPROVALS - NOT FOR CONSTRUCTION 2022 - 11 - 09

Job Number _____
TITLE _____

WEST BUILDING OVERALL
ELEVATIONS

SHEET NUMBER

A20-04

CONSULTANTS

- civil
TMIG
8800 Dufferin St., Suite 200, Vaughan, ON L4K 0C5
STRUCTURAL
- RJC Engineers
1545 Carlin Ave., Suite 304, Ottawa, ON K1Z 8P9
- Smith+Anderson
1600 Carling Ave., Suite 530, Ottawa, ON K1Z 1G3
LANDSCAPING
- PFS Studio
1777 W 3rd Ave., Vancouver, BC V5U 1KJ
- CONSULTANT
Two Row Architect
1804 6th Line, Okesokee, ON N0A 1M0
- CONTRACTOR
EllisDon
2680 Queensview Dr., Ottawa, ON K2B 8J9

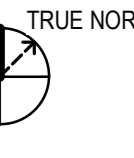
STAMP

PROJECT

**LEBRETON LIBRARY
PARCEL**
665 Albert St
Ottawa, ON
Canada



DREAM
30 Adelaide St. E., Suite 301,
Toronto, ON M5C 3H1
KEYPLAN



ISSUE CHART

NO.	DATE	DESCRIPTION
1	2022-04-29	ISSUED FOR SPA / ZBA / SPA
2	2022-05-27	ISSUED FOR 66% SD
4	2022-08-19	ISSUED FOR 66% CO
6	2022-11-09	ISSUED FOR SPA RESUBMISSION
7	2022-11-09	ISSUED FOR NCC 99% FLUIDA

ISSUED FOR APPROVALS - NOT FOR CONSTRUCTION 2022 - 11 - 09



ENLARGED RENDERED ELEVATION - WEST BUILDING, SOUTH ELEVATION

CONSULTANTS

- civil
TMIG
8800 Dufferin St., Suite 200, Vaughan, ON L4K 0C5
STRUCTURAL
- RJC Engineers
1545 Carlin Ave., Suite 304, Ottawa, ON K1Z 8P9
- Smith+Anderson
1600 Carling Ave., Suite 530, Ottawa, ON K1Z 1G3
LANDSCAPING
- PFS Studio
1777 W 3rd Ave., Vancouver, BC V5U 1KJ
- CONSULTANT
Two Row Architect
1804 6th Line, Orillia, ON N0A 1M0
- CONTRACTOR
EllisDon
2680 Queensview Dr., Ottawa, ON K2B 8J9

STAMP

PROJECT

**LEBRETON LIBRARY
PARCEL**
665 Albert St
Ottawa, ON
Canada

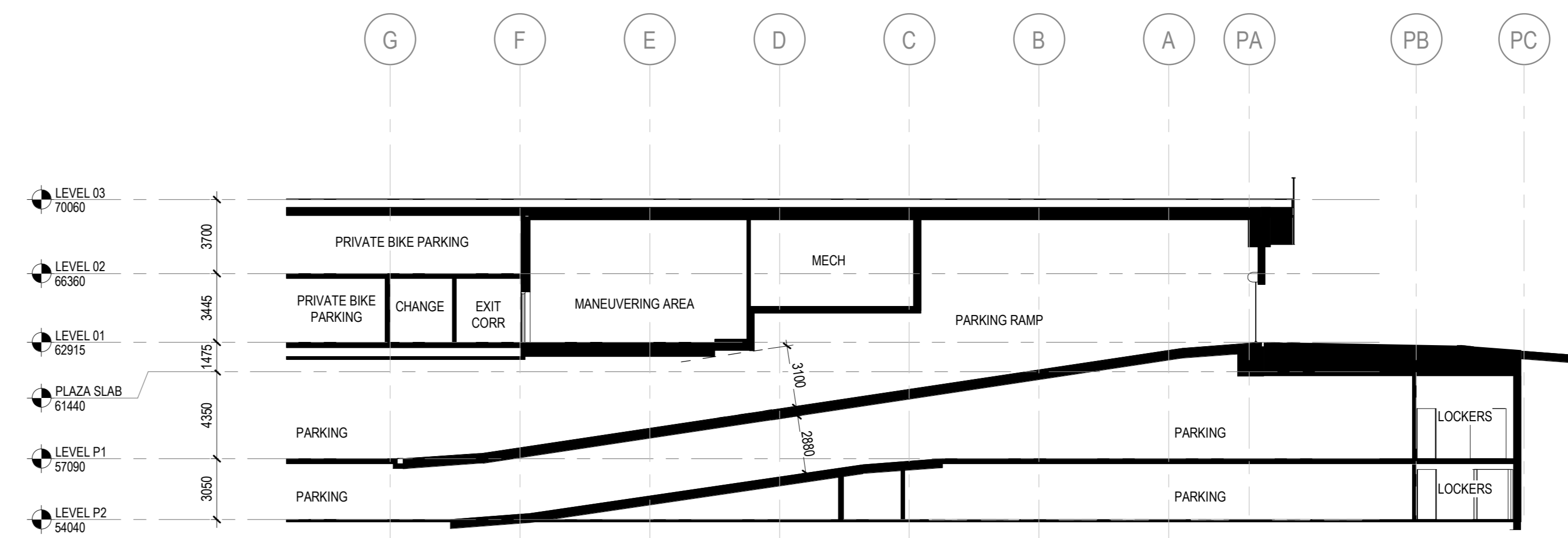


DREAM
30 Adelaide St. E., Suite 301,
Toronto, ON M5C 3H1
KEYPLAN

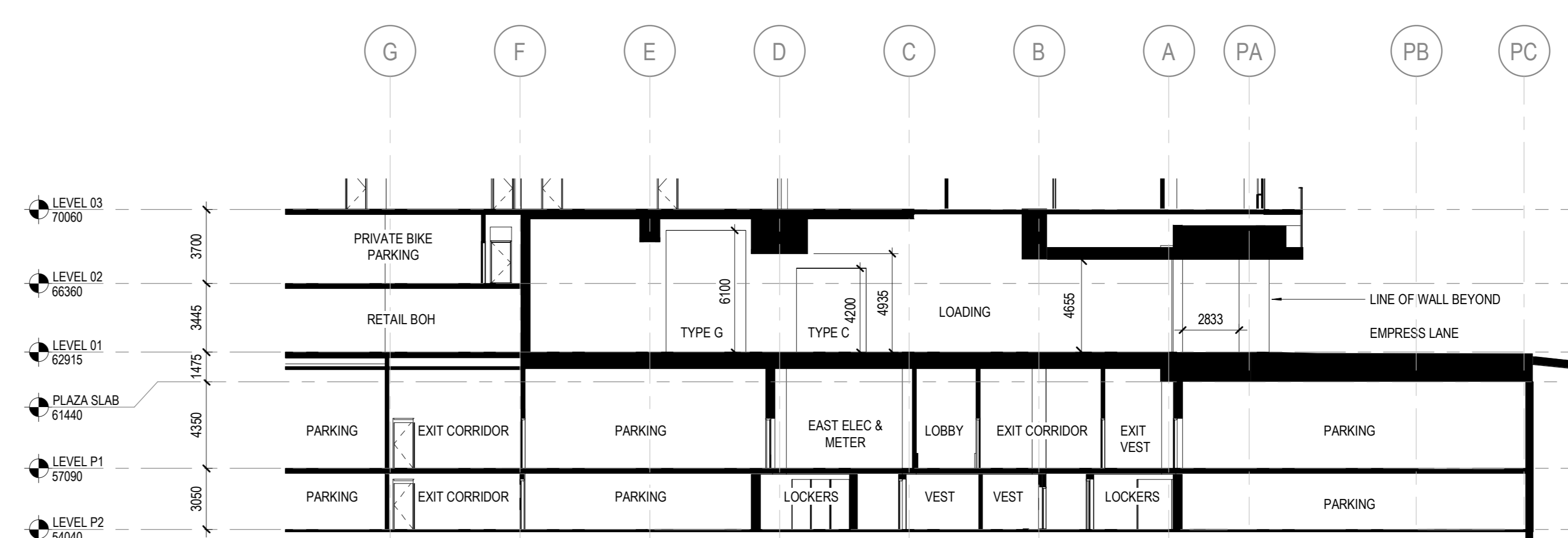
ISSUED FOR APPROVALS - NOT FOR CONSTRUCTION 2022 - 11 - 09

TRUE NORTH

NO.	DATE	DESCRIPTION
1	2022-04-29	ISSUED FOR SPA / ZBA / SPA
2	2022-05-27	ISSUED FOR 66% SD
3	2022-06-10	ISSUED FOR 100% SD
4	2022-08-19	ISSUED FOR 90% SD
5	2022-11-09	ISSUED FOR SPA RESUBMISSION
7	2022-11-09	ISSUED FOR NCC 99% FLUIDITY



2 PARTIAL SECTION @ PARKING GARAGE RAMP
1:200



1 PARTIAL SECTION @ LOADING DOCK ACCESS
1:200

Job Number _____ TITLE _____

PARTIAL BUILDING SECTIONS

SHEET NUMBER _____

A23-01

© 2022 KPMB and Perkins & Will

NO.	DATE	DESCRIPTION
1	2022-05-10	ISSUED FOR 100% SD
2	2022-06-19	ISSUED FOR 60% DD
3	2022-11-09	ISSUED FOR SPA RESUBMISSION
4	2022-11-09	ISSUED FOR NCC 99% PLUGITA

ISSUED FOR APPROVALS - NOT FOR CONSTRUCTION 2022 - 11 - 09

Reference Image	Abbrev.	Product	Size	Colour/Finish	Location	Description/Comment
Podium (Level 1 - 6)						
	CWS-01	Thermally Broken Curtain Wall System	Back member size to be confirmed.	M06 - 399C9210 Fluoropon Classic II Dark Copper	Ground Floor Retail, Lobby, Amenity	Perimeter cap to match back member finish, internal joints to be structural silicon.
	WW-01	Window Wall	Various sizes. Refer to drawings	M06 - 399C9210 Fluoropon Classic II Dark Copper	Podium residential units	WW-1 has CH-1 channel integrated into it
	CH-01	Finished Decorative Aluminum Extrusion Channel	Height varies, width is consistent. Material to be full height. Where there are stack joints, full height between stack joints.	M07 - 398A2106 Fluoropon Black Oxide Steel	Level 1 - 6	Fastened into CW-1, WW-1 and WW-2 systems. Source extrusion from single source
	FN-01	Infill Box	100mm x 300mm	M06 - 399C9210 Fluoropon Classic II Dark Copper	Ground Floor Retail, Lobby, Amenity as indicated	Integrated as part of CW-1 system, complete with thermally broken anchor Kawneer Trinity Bracket.
	SF-01	Exterior Wood Soffit	19mm Depth, 125mm Spacing	Western Hemlock with Teak Stain	Ground floor canopy as indicated	
	AG-1	Custom Perforated Aluminum Guard Systems		M10 - Mill finished aluminum	Ground Floor and Balcony Soffits	
	SF-02.1 SF-02.2 SF-03.1 SF-03.2	Aluminum Plate Soffit		M10 - Mill finished aluminum	Ground Floor and Balcony Soffits	
	EW-2.1	Finished Aluminum Plate		M06 - Sherwin Williams Fluoropon Dark Rust		
	ST-01	Cut Granite Base	Varies	Kodiak Brown with Flamed Finish	Ground floor curb cladding	
	IGU-01A	Triple Glazed IGU with Bird-Friendly Pattern (Vision Glass)	Varies. Refer to drawings	5mm acid etched dot at 50m centres on #1 surface, Solarban 60 on #2 and #4 surfaces. Argon filled.		U-Value (Winter) = 0.12 Shading Coefficient = 0.35 SHGC = 0.31 (min.40) VLT = 56
	IGU-01B	Triple Glazed IGU with Bird-Friendly Pattern (Glass Spandrel)	Varies. Refer to drawings	5mm acid etched dot at 50m centres on #1 surface, Solarban 60 on #2 and #4 surfaces. 100% opaque frit #6. Argon filled.		U-Value (Winter) = 0.12 Shading Coefficient = 0.35 SHGC = 0.31 (min.40) VLT = 56
	GG-1	Laminated Glass Wind Screen	1800mm High X 1525mm Wide	Tempered laminated clear glass screen with Kurary BirdSecure Interlayer (Threat Factor = 12)	As indicated on terraces.	Threat Factor of 15 or less to comply with LEED Bird Collision Determination credit.
	GG-2	Glass Privacy Screen		Tempered Pinhead Texture Glass		
	LVR-02	Vertical 5" deep storm resistant Louver with perforated face plate, integrated into CWS-1		M06 - Sherwin Williams Fluoropon Dark Rust		
Reveal (Level 3-6)						
	WW-2	Window Wall	Various sizes. Refer to drawings	M07 - 398A2106 Fluoropon Black Oxide Steel	Level 2 - 6 "Reveal" below tower	WW1-2 has CH-1 channel integrated into it
	CH-1	Finished Decorative Aluminum Extrusion Channel	Height varies, width is consistent. Material to be full height. Where there are stack joints, full height between stack joints.	M07 - 398A2106 Fluoropon Black Oxide Steel	Level 1 - 6	Fastened into CW1, WW1 and WW2 systems

Reference Image	Abbrev.	Product	Size	Colour/Finish	Location	Description/Comment
	IGU-01A	Triple Glazed IGU with Bird-Friendly Pattern (Vision Glass)	Varies. Refer to drawings	5mm acid etched dot at 50m centres on #1 surface, Solarban 60 on #2 and #4 surfaces. Argon filled.		U-Value (Winter) = 0.12 Shading Coefficient = 0.35 SHGC = 0.31 (min.40) VLT = 56
	IGU-01B	Triple Glazed IGU with Bird-Friendly Pattern (Glass Spandrel)	Varies. Refer to drawings	5mm acid etched dot at 50m centres on #1 surface, Solarban 60 on #2 and #4 surfaces. 100% opaque frit #6. Argon filled.		U-Value (Winter) = 0.12 Shading Coefficient = 0.35 SHGC = 0.31 (min.40) VLT = 56
Tower (Level 7 - 31 and 36)						
	WW-03	Window Wall	Various sizes. Refer to drawings	M07 - 398A2106 Fluoropon Black Oxide Steel	Level 7 - 31 and 36 tower.	WW3 have AG1 within it.
	EW1	Finished Aluminum Plate		M01 - Sherwin Williams Fluoropon Special Premiere Carnival Red II		
	EW1	Finished Aluminum Plate		M02 - PPG Duramar U135452 Rosy Red		
	EW1	Finished Aluminum Plate		M03 - PPG Duramar UC149100 Rouge		
	EW1	Finished Aluminum Plate		M04 - PPG Duramar UC145090 Pink Perfection		
	EW1	Finished Aluminum Plate		M05 - PPG Duramar UC145091 Blush		
	BIPV-01	Building Integrated Photovoltaics		Black with matte finish. Finish to be confirmed to achieve threat factor of 1 per ABC Threat Factor Database.	Penthouse exterior as indicated	Integrated into WW-3 system
	LV-01			M07 - 398A2106 Fluoropon Black Oxide Steel		
	MG-01	Aluminum Picket Guard Rail		M07 - 398A2106 Fluoropon Black Oxide Steel		To be isolated from aluminum system to prevent galvanic corrosion
	SF-02.3	Finished Aluminum Soffit	Refer to drawings for sizes	M07 - 398A2106 Fluoropon Black Oxide Steel	Tower soffit	
	IGU-01A	Triple Glazed IGU with Bird-Friendly Pattern (Vision Glass)	Varies. Refer to drawings	5mm acid etched dot at 50m centres on #1 surface, Solarban 60 on #2 and #4 surfaces. Argon filled.		U-Value (Winter) = 0.12 Shading Coefficient = 0.35 SHGC = 0.31 (min.40) VLT = 56
	IGU-01B	Triple Glazed IGU with Bird-Friendly Pattern (Glass Spandrel)	Varies. Refer to drawings	5mm acid etched dot at 50m centres on #1 surface, Solarban 60 on #2 and #4 surfaces. 100% opaque frit #6. Argon filled.		U-Value (Winter) = 0.12 Shading Coefficient = 0.35 SHGC = 0.31 (min.40) VLT = 56
	IGU-02A	Triple Glazed IGU (Vision Glass)	Varies. Refer to drawings	Solarban 60 on #2 and #4 surfaces. Argon filled.		U-Value (Winter) = 0.12 Shading Coefficient = 0.35 SHGC = 0.31 (min.40) VLT = 56
	IGU-02B	Triple Glazed IGU (Glass Spandrel)	Varies. Refer to drawings	Solarban 60 on #2 and #4 surfaces. 100% opaque frit #6. Argon filled.		U-Value (Winter) = 0.12 Shading Coefficient = 0.35 SHGC = 0.31 (min.40) VLT = 56

CONSULTANTS

civil
TMIG
 8800 Dufferin St., Suite 200, Vaughan, ON L4K 0C5
STRUCTURAL
RJC Engineers
 1545 Carlin Ave., Suite 304, Ottawa, ON K1Z 8P9
Smith+Anderson
 1600 Carling Ave., Suite 530, Ottawa, ON K1Z 1G3
LANDSCAPING
PFS Studio
 1777 W 3rd Ave., Vancouver, BC V5U 1KJ
CONSULTANT
Two Row Architect
 1804 6th Line, Oshawa, ON N4A 1M0
CONTRACTOR
EllisDon
 2680 Queensview Dr., Ottawa, ON K2B 8J9

STAMP

PROJECT

**LEBRETON LIBRARY
 PARCEL**
 665 Albert St
 Ottawa, ON
 Canada



DREAM
 30 Adelaide St. E., Suite 301,
 Toronto, ON M5C 3H1
KEYPLAN

ISSUED FOR APPROVALS - NOT FOR CONSTRUCTION 2022 - 11 - 09



ISSUE CHART

NO.	DATE	DESCRIPTION
1	2022-05-27	ISSUED FOR 66% SD
2	2022-06-10	ISSUED FOR 100% SD
3	2022-08-19	ISSUED FOR 66% CD
4	2022-11-09	ISSUED FOR SPA RESUBMISSION
5	2022-11-09	ISSUED FOR NCC 99% FLUIDATA



VIEW FROM NORTH LOOKING SOUTHWEST



VIEW FROM NORTH LOOKING SOUTH



VIEW FROM NORTH ALONG BOOTH STREET LOOKING SOUTHEAST



VIEW FROM BOOTH STREET SOUTH OF PIMISI STATION LOOKING EAST



VIEW FROM ALBERT STREET LOOKING EAST



VIEW FROM CORNER OF BOOTH STREET AND ALBERT STREET LOOKING NORTHEAST



VIEW FROM LORNE STREET LOOKING NORTH



VIEW FROM PERKINS STREET LOOKING NORTH



VIEW FROM CORNER OF ALBERT STREET AND EMPRESS AVENUE LOOKING NORTHWEST

Job Number _____
 TITLE _____

STREET VIEWS

SHEET NUMBER

A70-01



TYPICAL RETAIL ELEVATION SHOWING BIRD FRIT



VIEW AT CORNER OF ALBERT STREET AND BOOTH STREET LOOKING NORTH



VIEW LOOKING AT ALBERT STREET AND EMPRESS LANE CORNER



VIEW LOOKING AT THE WEST BUILDING FROM THE GATHERING PLACE



VIEW FROM PIMISI STATION LOOKING SOUTH



VIEW LOOKING FROM BOOTH STREET AT THE WEDGE PARK

KPMB Perkins&Will

351 King Street E., Suite 1200, Toronto, Ontario, Canada M5A 0K4
 416.977.5104
 kpm.com

275 Slater Street, Suite 1810, Ottawa, Ontario, Canada K1P 5A9
 613.563.2500
 613.563.7251
 perkinswill.com

CONSULTANTS

CIVIL
TMIG
 8800 Dufferin St., Suite 200, Vaughan, ON L4K 0C5

STRUCTURAL
RJC Engineers
 1545 Carlin Ave., Suite 304, Ottawa, ON K1Z 8P9

LANDSCAPING
Smith+Anderson
 1600 Carling Ave., Suite 530, Ottawa, ON K1Z 1G3

CONSULTANT
PFS Studio
 1777 W 3rd Ave., Vancouver, BC V5J 1K1

CONTRACTOR
Two Row Architect
 1804 6th Line, Oshawa, ON N4A 1M0

CONTRACTOR
EllisDon
 2680 Queensview Dr., Ottawa, ON K2B 8J9

STAMP

PROJECT

**LEBRETON LIBRARY
 PARCEL**
 665 Albert St
 Ottawa, ON
 Canada



DREAM
 30 Adelaide St. E., Suite 301,
 Toronto, ON M5C 3H1
 KEYPLAN

ISSUE CHART

TRUE NORTH

NO.	DATE	DESCRIPTION
1	2022-11-09	ISSUED FOR SPA PRESS/REVISION
7	2022-11-09	ISSUED FOR NOC/99% FLUIDTA

ISSUED FOR APPROVALS - NOT FOR CONSTRUCTION 2022-11-09

Job Number _____
 TITLE _____

STREET VIEWS

SHEET NUMBER

A70-02

© 2022 KPMB and Perkins & Will

CONSULTANTS

civil
TMIG
 8800 Dufferin St., Suite 200, Vaughan, ON L4K 0C5
STRUCTURAL
RJC Engineers
 1545 Carlin Ave., Suite 304, Ottawa, ON K1Z 8P9
Smith+Anderson
 1600 Carling Ave., Suite 530, Ottawa, ON K1Z 1G3
LANDSCAPING
PFS Studio
 1777 W 3rd Ave., Vancouver, BC V5J 1KJ
CONSULTANT
Two Row Architect
 1804 6th Line, Okesokeen, ON N0A 1M0
CONTRACTOR
ElisDon
 2680 Queensview Dr., Ottawa, ON K2B 8J9

STAMP

PROJECT

**LEBRETON LIBRARY
 PARCEL**
 665 Albert St
 Ottawa, ON
 Canada



DREAM
 30 Adelaide St. E., Suite 301,
 Toronto, ON M5C 3H1
KEYPLAN



ISSUE CHART

NO.	DATE	DESCRIPTION
1	2022-11-09	ISSUED FOR SPA RESUBMISSION
7	2022-11-09	ISSUED FOR NOC 99% FLUIDITY

ISSUED FOR APPROVALS - NOT FOR CONSTRUCTION 2022-11-09



VIEW FROM ALBERT STREET COMING FROM EMPRESS LANE



VIEW FROM ALBERT STREET LOOKING AT PIMISI STATION



VIEW FROM ALBERT STREET LOOKING TOWARDS THE CANOPY



VIEW FROM ALBERT STREET LOOKING AT THE EAST BUILDING



VIEW FROM THE BOSQUE COMING FROM PIMISI STATION



VIEW FROM THE DIAGONALE COMING FROM PIMISI STATION

Job Number _____
 TITLE _____

STREET VIEWS

SHEET NUMBER

A70-03

© 2022 KPMB and Perkins & Will