

ISSUED FOR SITE PLAN CONTROL
2023 - 03 - 24



G SERIES SHEET LIST	
SHEET NUMBER	SHEET NAME
G00-00	COVER AND SHEET LIST
G01-01	SITE PLAN & STATISTICS
G01-03	SETBACK SITE PLAN
	ISSUED FOR OPA/ZBA/SPA 2022-04-22
	ISSUED FOR 66% SD 2022-05-27
	ISSUED FOR 100% SD 2022-06-10
	ISSUED FOR 66% DD 2022-08-19
	ISSUED FOR SPA RESUBMISSION 2022-11-09
	ISSUED FOR NCC 99% FLUDTA 2022-11-09
	ISSUED FOR SPA RESUBMISSION 2023-02-03
	ISSUED FOR SITE PLAN CONTROL 2023-03-24

A SERIES SHEET LIST	
SHEET NUMBER	SHEET NAME
A20-01	OVERALL NORTH ELEVATION
A20-02	OVERALL SOUTH ELEVATION
A20-03	EAST BUILDING OVERALL ELEVATIONS
A20-04	WEST BUILDING OVERALL ELEVATIONS
A21-90	ENLARGED RENDERED ELEVATION
A22-01	OVERALL BUILDING SECTION
A40-01	ENLARGED CISTERN PLANS & SECTIONS
A70-10	BRD COLLISION DETERENCE - WEST TOWER
A70-11	BRD COLLISION DETERENCE - EAST TOWER
	ISSUED FOR OPA/ZBA/SPA 2022-04-22
	ISSUED FOR 66% SD 2022-05-27
	ISSUED FOR 100% SD 2022-06-10
	ISSUED FOR 66% DD 2022-08-19
	ISSUED FOR SPA RESUBMISSION 2022-11-09
	ISSUED FOR NCC 99% FLUDTA 2022-11-09
	ISSUED FOR SPA RESUBMISSION 2023-02-03
	ISSUED FOR SITE PLAN CONTROL 2023-03-24

CONSULTANTS

civil
TMG
8800 Dufferin St., Suite 200, Vaughan, ON L4K 0C5

STRUCTURAL
RJC Engineers
1545 Carlin Ave., Suite 304, Ottawa, ON K1Z 9P9

MEP
Smith+Anderson
1600 Carling Ave., Suite 530, Ottawa, ON K1Z 1G3

LANDSCAPING
PFS Studio
1777 W 3rd Ave., Vancouver, BC V5U 1K1

CONSULTANT
Two Row Architect
1804 6th Line, Oshawa, ON N4A 1M0

CONTRACTOR
EllisDon
2680 Queensview Dr., Ottawa, ON K2B 6J9

STAMP

PROJECT

LEBRETON LIBRARY
PARCEL
665 Albert St
Ottawa, ON
Canada



DREAM
30 Adelaide St. E., Suite 301,
Toronto, ON M5C 3H1
KEYPLAN



ISSUE CHART

NO.	DATE	DESCRIPTION
1	2023-04-23	ISSUED FOR SPA / ZBA / SRA
2	2022-05-27	ISSUED FOR 60% SD
3	2022-06-10	ISSUED FOR 100% SD
4	2022-08-19	ISSUED FOR 60% SD
5	2022-09-30	ISSUED FOR 100% SD
6	2022-11-09	ISSUED FOR SPA RESUBMISSION
7	2022-11-09	ISSUED FOR NCC 90% PLUMBA
8	2022-12-09	ISSUED FOR FOUNDATION REVIEW
9	2022-12-16	ISSUED FOR SIGNING & EXCAVATION PERMIT
10	2023-01-27	ISSUED FOR ELEVATOR & EXCAVATION TENDER
11	2023-02-03	RESUBMITTED FOR SPA & NCC 90%
12	2023-02-17	ISSUED FOR FOUNDATION PERMIT
13	2023-03-03	ISSUED FOR PROGRESS REVIEW
14	2023-03-03	ISSUED FOR PROGRESS REVIEW
15	2023-03-24	ISSUED FOR SITE PLAN CONTROL

ISSUED FOR SITE PLAN CONTROL: 2023-03-24

NOTES

SITE PLAN BASED ON TOPOGRAPHIC SURVEY BY: STANTEC GEOMATICS LTD.
300-1331 CLYDE AVENUE,
OTTAWA, ON, K2C 0A9
C/O R. G. BENNETT
APRIL 7, 2022

SITE / ZONING DATA

	REQUIRED	PROVIDED
TOTAL LOT AREA	9,629 m ²	9,629 m ²
GROSS FLOOR AREA	38,275.26 m ²	38,275.26 m ²
FLOOR SPACE INDEX	3.97	3.97
LOT FRONTAGE ON ALBERT STREET	144.0 m	144.0 m
LOT FRONTAGE ON BOOTH STREET	77.9 m	77.9 m
LOT FRONTAGE ON LRT	138.6 m	138.6 m
LOT FRONTAGE ON EAST PROPERTY LINE	63.8 m	63.8 m
PROPOSED BUILDING LENGTH AT GRADE ON ALBERT STREET		
EAST TOWER (PARALLEL)	29.6 m	29.6 m
EAST TOWER (ANGLED)	43.1 m	43.1 m
WEST TOWER (PARALLEL)	42.8 m	42.8 m
WEST TOWER (ANGLED)	24.5 m	24.5 m
PROPOSED BUILDING LENGTH AT GRADE ON BOOTH STREET		
WEST TOWER	24.5 m	24.5 m
PROPOSED BUILDING LENGTH AT GRADE ON LRT		
EAST TOWER (PARALLEL)	42.2 m	42.2 m
EAST TOWER (ANGLED)	21.8 m	21.8 m
EAST TOWER (ANGLED)	15.3 m	15.3 m
WEST TOWER (PARALLEL)	45.8 m	45.8 m
WEST TOWER (ANGLED)	11.4 m	11.4 m
PROPOSED BUILDING LENGTH AT GRADE ON EAST PROPERTY LINE		
EAST TOWER	47.3 m	47.3 m
SETBACK DATA		
FRONT YARD (ALBERT STREET)	NO MIN	1.8 m-4.7 m
CORNER SIDE YARD SETBACK	NO MIN	0.0 m-8.5 m
EASTERLY INTERIOR SIDE YARD SETBACK	9.0 m	9.0 m
REAR YARD SETBACK (LRT)	NO MIN	10.1 m
TOWER SETBACK FROM EASTERLY SIDE YARD	14.5 m	14.5 m
TOWER DATA		
TOWER SEPARATION	23.0 m	55.3 m
TOWER FLOOR-PLATE AREA	750 m ² MAX	709 m ²
BUILDING HEIGHT		
EAST TOWER AVERAGE GRADE		62.91 m
MIDPOINT OF EAST TOWER ROOF		166.0 m
EAST TOWER BUILDING HEIGHT	110 m	103.09 m
WEST TOWER AVERAGE GRADE		62.59 m
MIDPOINT OF WEST TOWER ROOF		161.94 m
WEST TOWER BUILDING HEIGHT	127 m	119.36 m

AMENITY AREA

AMENITY LOCATION	AMENITY FUNCTION	AREA
INDOOR AMENITY	COMMUNAL AMENITY	1919.40 m ²
OUTDOOR AMENITY	COMMUNAL AMENITY	2425.26 m ²
OUTDOOR AMENITY	PRIVATE AMENITY	1186.53 m ²
TOTAL AMENITY SPACE		5431.20 m²

REQUIRED AMENITY AREA = 688 Units x 6m x 3648 m² 50% IS REQUIRED TO BE COMMUNAL = 1824 m²

PARKING SPACES

TYPE	REQUIRED	REQUIRED	PROPOSED
RESIDENT	N/A, MAX 1.5 per	0 MIN, 910 MAX	139
RESIDENT BARRIER-FREE	N/A	0	8
TOTAL RESIDENTIAL			147
VISITOR RESIDENTIAL	0.1 unit	61	58 (+4 BF)
VISITOR RETAIL	N/A, MAX 10	0	8
VISITOR DAY CARE	N/A	0	6
VISITOR BARRIER-FREE	20-99 spaces = 1 (of 61)	4	4
TOTAL VISITOR			76
GRAND TOTAL		61 MIN	223

NOTES:
REFER TO A10-008 FOR FURTHER INFORMATION ON VEHICULAR PARKING SPACE SIZES AND WASTE STATISTICS.

LOADING SPACES

TYPE	REQUIRED	PROPOSED
RETAIL	0	SHARED
OTHER (DAY CARE)	1	SHARED
RESIDENTIAL	0	SHARED
TOTAL TYP LOADING SPACES	1	1

1 TYPE G LOADING SPACE IS PROVIDED FOR WASTE COLLECTION
1 ADDITIONAL LSU LOADING SPACE IS LOCATED IN P1 FOR WEST TOWER LOADING CONVENIENCE

BICYCLE PARKING SPACES

TYPE	PROVISION	REQUIRED	PROPOSED
REQUIRED SPACES			
RESIDENTIAL	0.5 unit	304	
RETAIL	1/250 m ²	6	
DAY CARE	1/250 m ²	5	
TOTAL REQUIRED		315	
PROVIDED SPACES			
INTERIOR SECURE SPACES	MIN 25%	79	662
EXTERIOR SPACES	MAX 50%	N/A	132
TOTAL PROVIDED			794

NUMBER OF SPACES ABOVE AT GROUND LEVEL HORIZONTAL
INTERIOR: 50% OF REQD = 158
EXTERIOR: 26
TOTAL: 184

STORAGE LOCKERS

TOTAL: 428

SITE PLAN LEGEND

AD	AREA DRAIN
AP	ACCESSIBLE PARKING SIGNAGE
AW	AREA WELL GRATE POROSITY LESS THAN 20mm x 20mm
B	BOLLARD
BF	BARRIER-FREE
BR	BIKE RACK (SEE LANDSCAPE)
CB	CATCH BASIN
CW	CONCRETE WALKWAY
DC	DEPRESSED CURB
EX-CW	EXISTING CONCRETE WALKWAY
EX-L	EXISTING LIGHT STANDARD
FDC	FIRE DEPARTMENT CONNECTION
FH	FIRE HYDRANT
FH-EX	FIRE HYDRANT - EXISTING
FR	FIRE ROUTE SIGNAGE
HB	HOSE BIB (SEE MECHANICAL)
MH	MAN HOLE
NIC	NOT IN CONTRACT
TD	TRENCH DRAIN

▲ PRIMARY ENTRY/EXIT
▲ EXIT
- - - PROPERTY AND EASEMENT LINES
- - - FIRE ROUTE

SITE PLAN & STATISTICS

Job Number: 442200
TITLE

SHEET NUMBER

G01-01

© 2022 KPMB and Perkins & Will

COORDINATION OF ALBERT STREETScape ONGOING WITH CITY STAFF DELIVERING ALBERT-SLATER RECONSTRUCTION PROJECT

COORDINATION OF ALBERT STREETScape ONGOING WITH CITY STAFF DELIVERING ALBERT-SLATER RECONSTRUCTION PROJECT

DETAILED GEOMETRIC DESIGN OF EMPRESS INTERSECTION ONGOING & SUBJECT TO REVIEW/ APPROVAL BY CITY STAFF ENGAGED ON ALBERT-SLATER RECONSTRUCTION PROJECT (SEPARATE SUBMISSION PENDING)

1 SITE PLAN
1:200

NOTE
1. REFER TO LANDSCAPE AND CIVIL DRAWING FOR LANDSCAPE DESIGN, SITE LIGHTING, SITE SERVING, AND GRADING INFORMATION.

Autodesk Docs\U:\Breton Files\Library\BRL_Dream_Libretion_RZ2_Plan.mxd 2/24/2024 4:53:06 PM #18916

D02-12-22-0089

CONSULTANTS

- civil**
TMIG
8800 Dufferin St., Suite 200, Vaughan, ON L4K 0C5
- STRUCTURAL**
RJC Engineers
1545 Carlin Ave., Suite 304, Ottawa, ON K1Z 9P9
- MEP**
Smith+Anderson
1600 Carling Ave., Suite 530, Ottawa, ON K1Z 1G3
- LANDSCAPING**
PFS Studio
1777 W 3rd Ave., Vancouver, BC V5J 1KJ
- CONSULTANT**
Two Row Architect
1804 6th Line, Oshawa, ON N4A 1M0
- CONTRACTOR**
EllisDon
2680 Queensview Dr., Ottawa, ON K2B 6J9

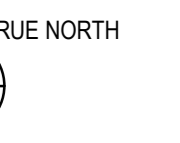
STAMP

PROJECT

LEBRETON LIBRARY PARCEL
665 Albert St
Ottawa, ON
Canada



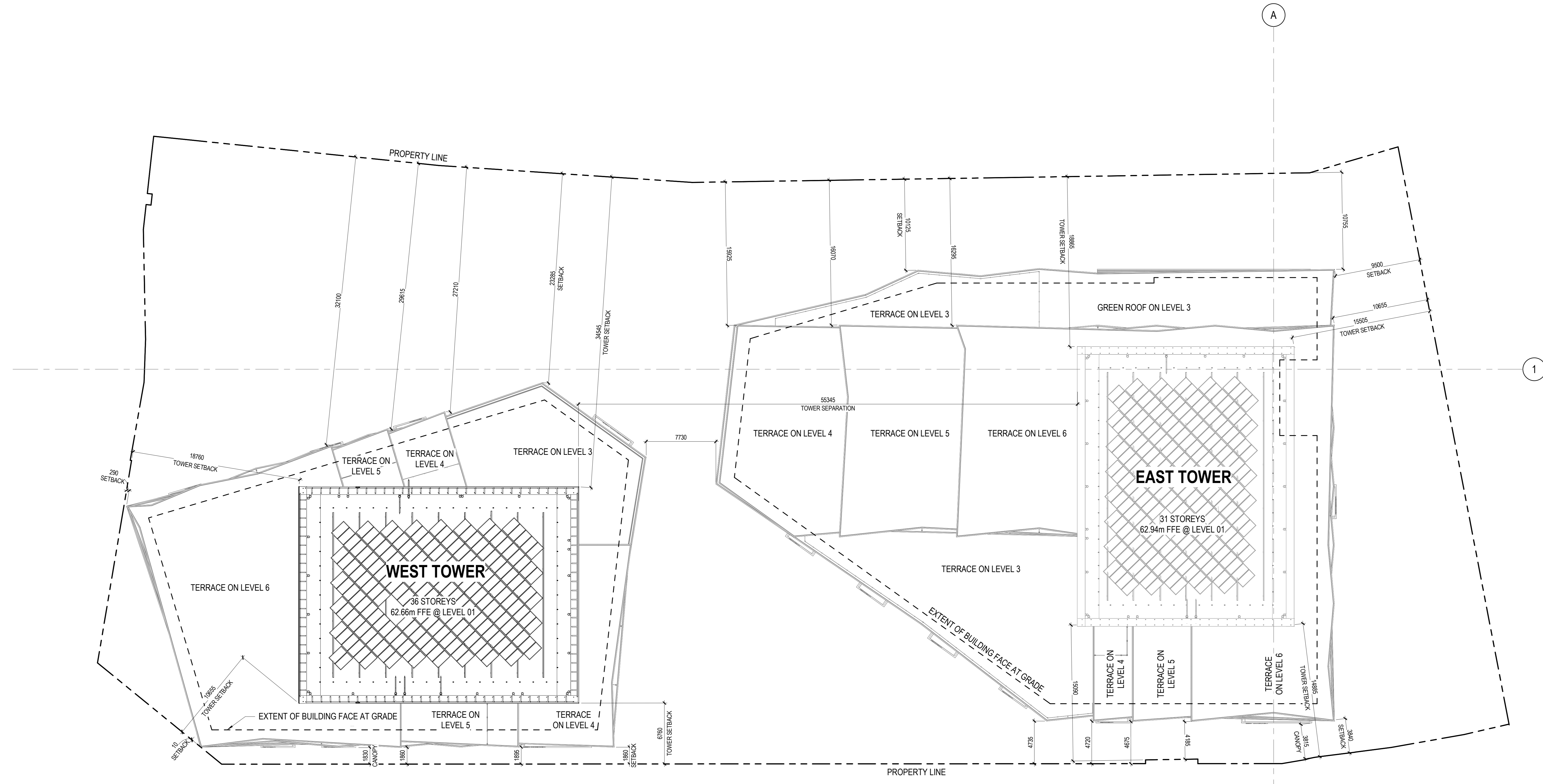
DREAM
30 Adelaide St. E., Suite 301,
Toronto, ON M5C 3H1
KEYPLAN



ISSUE CHART

NO.	DATE	DESCRIPTION
15	2023-03-24	ISSUED FOR SITE PLAN CONTROL

ISSUED FOR SITE PLAN CONTROL 2023 - 03-24



1 SETBACK SITE PLAN
1:200

CONSULTANTS

- CIVIL**
TMIG
8800 Dufferin St., Suite 200, Vaughan, ON L4K 9C5
- STRUCTURAL**
RJC Engineers
1545 Carlin Ave., Suite 304, Ottawa, ON K1Z 9P9
- MEP**
Smith+Anderson
1600 Carling Ave., Suite 530, Ottawa, ON K1Z 1G3
- LANDSCAPING**
PFS Studio
1777 W 3rd Ave., Vancouver, BC V5U 1KJ
- CONSULTANT**
Two Row Architect
1804 6th Line, Oshawa, ON N4A 1M0
- CONTRACTOR**
EliSDon
2680 Queensview Dr., Ottawa, ON K2B 6J9

STAMP

PROJECT

**LEBRETON LIBRARY
PARCEL**
665 Albert St
Ottawa, ON
Canada



DREAM
30 Adelaide St. E., Suite 301,
Toronto, ON M5C 3H1
KEY PLAN



ISSUE CHART

NO.	ISSUE	DATE
4	ISSUED FOR 66% DD	2023-09-19
10	ISSUED FOR ELEVATOR & EXCAVATION TENDER	2023-01-27
12	ISSUED FOR FOUNDATION PERMIT	2023-02-17
14	ISSUED FOR PROGRESS REVIEW	2023-03-03
15	ISSUED FOR SITE PLAN CONTROL	2023-03-24

ISSUED FOR SITE PLAN CONTROL 2023-03-24

ELEVATIONS LEGEND

- MP-01 PREFINISHED ALUMINUM PLATE (PT-101)
- MP-02 PREFINISHED ALUMINUM PLATE (PT-102)
- MP-03 PREFINISHED ALUMINUM PLATE (PT-103)
- MP-04 PREFINISHED ALUMINUM PLATE (PT-104)
- MP-05 PREFINISHED ALUMINUM PLATE (PT-105)
- PT-106 PREFINISHED ALUMINUM
- PT-107 PREFINISHED ALUMINUM
- STN-01 CUT GRANITE
- IGU-01A/IGU-02A/IGU-03A VISION GLAZING (NOTE 1)
- IGU-01B/TPG-01/TPG-02 SPANDREL GLAZING (NOTE 1)
- WS-01/WS-02 WIND & NOISE BARRIER, VISION GLASS (NOTE 1)
- PS-01 PRIVACY SCREEN, PATTERNED GLASS (NOTE 1)
- LV-01 WINDOW WALL LOUVER (PT-108)
- LV-02 PREFINISHED ALUMINUM PERFORATED LOUVER (PT-108)
- LV-03 PREFINISHED ALUMINUM LOUVER WITHIN SOFFIT (PT-108)
- FIN-01 VERTICAL SOLAR SHADE, GLAZED/OPAQUE BEHIND AS NOTED (PT-106)
- SF-01 WESTERN HEMLOCK EXTERIOR WOOD SOFFIT
- SF-02 PREFINISHED ALUMINUM PLATE SOFFIT (TO MATCH AG-01)
- SF-03 PREFINISHED ALUMINUM PLATE SOFFIT (PT-108)
- WWS-01 WINDOW WALL PODIUM (PT-106 & 108)
- WWS-02 WINDOW WALL TOWER REVEAL (PT-108)
- WWS-03 WINDOW WALL TOWER (PT-108)
- CWS-01 CURTAIN WALL SYSTEM (PT-106)
- CH-01 DECORATIVE ALUMINUM EXTRUSION CHANNEL (PT-108)
- BIPV-01 BUILDING INTEGRATED PHOTOVOLTAIC PANELS
- AG-01 PREFINISHED ALUMINUM PLATE, CUSTOM PERFORATED
- AG-02 PICKET GUARD

NOTE
1. REFER TO A70 SERIES FOR BIRD COLLISION DETERRENCE DRAWINGS FOR BIRD COLLISION DETERRENCE STRATEGIES AND ASSOCIATED EXTENTS



1 NORTH ELEVATION
1 : 200

CONSULTANTS

CIVIL
TMIG
8800 Dufferin St., Suite 200, Vaughan, ON L4K 0C5

STRUCTURAL
RJC Engineers
1545 Carlin Ave., Suite 304, Ottawa, ON K1Z 9P9

MEP
Smith+Anderson
1600 Carling Ave., Suite 530, Ottawa, ON K1Z 1G3

LANDSCAPING
PFS Studio
1777 W 3rd Ave., Vancouver, BC V6J 1KJ

CONSULTANT
Two Row Architect
1804 6th Line, Oshawa, ON N4A 1M0

CONTRACTOR
EllisDon
2680 Queensview Dr., Ottawa, ON K2B 6J9

STAMP

PROJECT

**LEBRETON LIBRARY
PARCEL**
665 Albert St
Ottawa, ON
Canada



DREAM
30 Adelaide St. E., Suite 301,
Toronto, ON M5C 3H1
KEYPLAN



ISSUE CHART

Week	Issue	Date
4	ISSUED FOR PERMITS	2023-08-19
7	ISSUED FOR ELEVATOR & EXCAVATION TENDER	2023-01-27
12	ISSUED FOR FOUNDATION PERMIT	2023-02-17
14	ISSUED FOR PROGRESS REVIEW	2023-03-03
15	ISSUED FOR SITE PLAN CONTROL	2023-03-24

ISSUED FOR SITE PLAN CONTROL 2023-03-24

ELEVATIONS LEGEND

- MP-01 PREFINISHED ALUMINUM PLATE (PT-101)
- MP-02 PREFINISHED ALUMINUM PLATE (PT-102)
- MP-03 PREFINISHED ALUMINUM PLATE (PT-103)
- MP-04 PREFINISHED ALUMINUM PLATE (PT-104)
- MP-05 PREFINISHED ALUMINUM PLATE (PT-105)
- PT-106 PREFINISHED ALUMINUM
- PT-107 PREFINISHED ALUMINUM

- STN-01 CUT GRANITE

- IGU-01A/IGU-02A/IGU-03A VISION GLAZING (NOTE 1)
- IGU-01B/TPG-01/TPG-02 SPANDREL GLAZING (NOTE 1)

- WS-01/WS-02 WIND & NOISE BARRIER, VISION GLASS (NOTE 1)
- PS-01 PRIVACY SCREEN, PATTERNED GLASS (NOTE 1)

- LV-01 WINDOW WALL LOUVER (PT-108)
- LV-02 PREFINISHED ALUMINUM PERFORATED LOUVER (PT-108)
- LV-03 PREFINISHED ALUMINUM LOUVER WITHIN SOFFIT (PT-108)

- FIN-01 VERTICAL SOLAR SHADE, GLAZED/OPAQUE BEHIND AS NOTED (PT-106)

- SF-01 WESTERN HEMLOCK EXTERIOR WOOD SOFFIT
- SF-02 PREFINISHED ALUMINUM PLATE SOFFIT (TO MATCH AG-01)
- SF-03 PREFINISHED ALUMINUM PLATE SOFFIT (PT-108)

- WWS-01 WINDOW WALL PODIUM (PT-106 & 108)
- WWS-02 WINDOW WALL TOWER REVEAL (PT-108)
- WWS-03 WINDOW WALL TOWER (PT-108)

- CWS-01 CURTAIN WALL SYSTEM (PT-106)

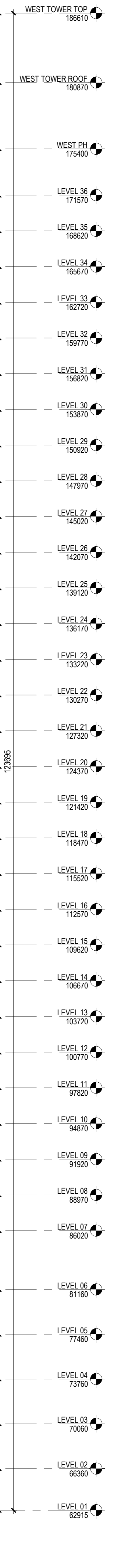
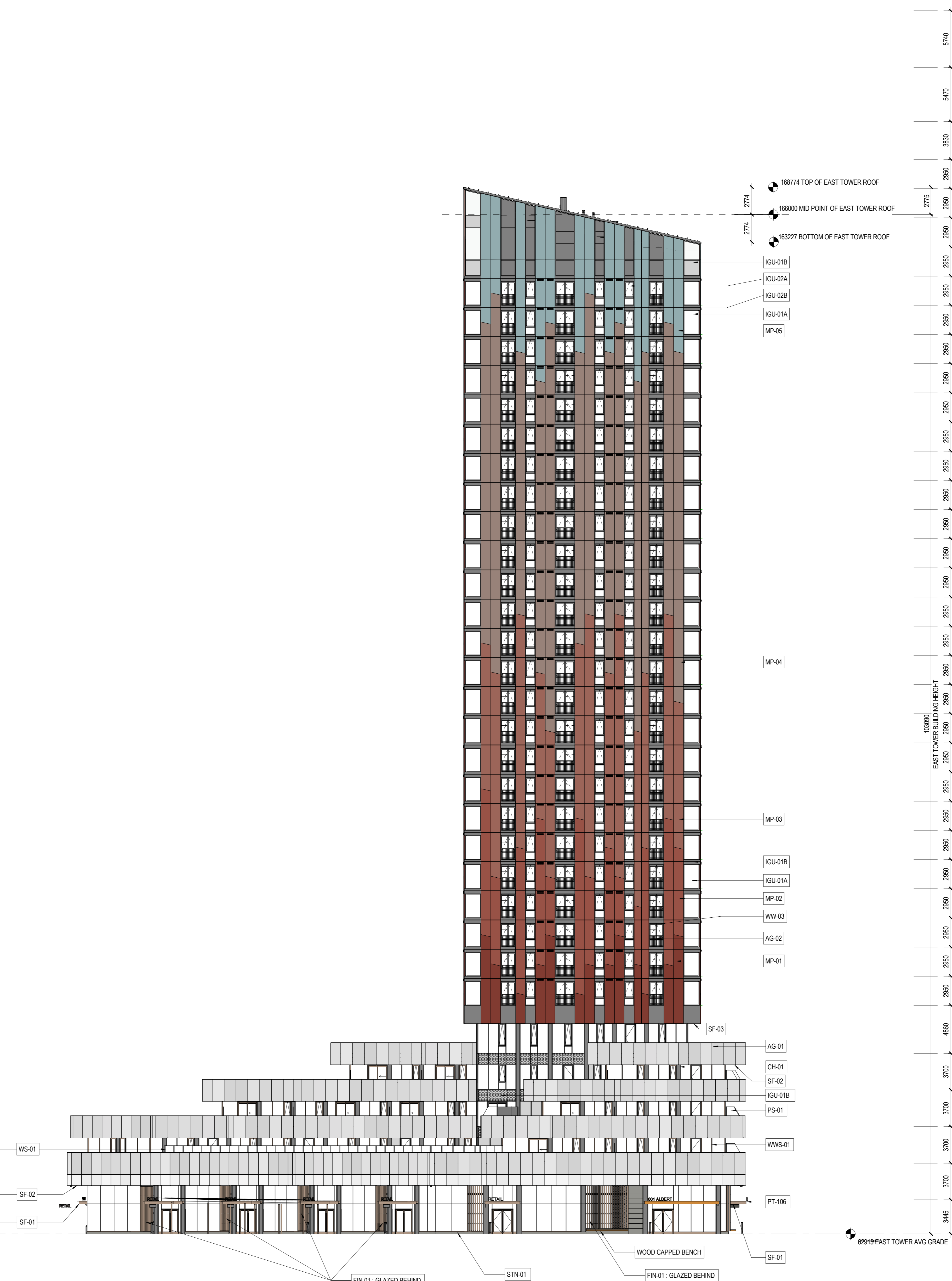
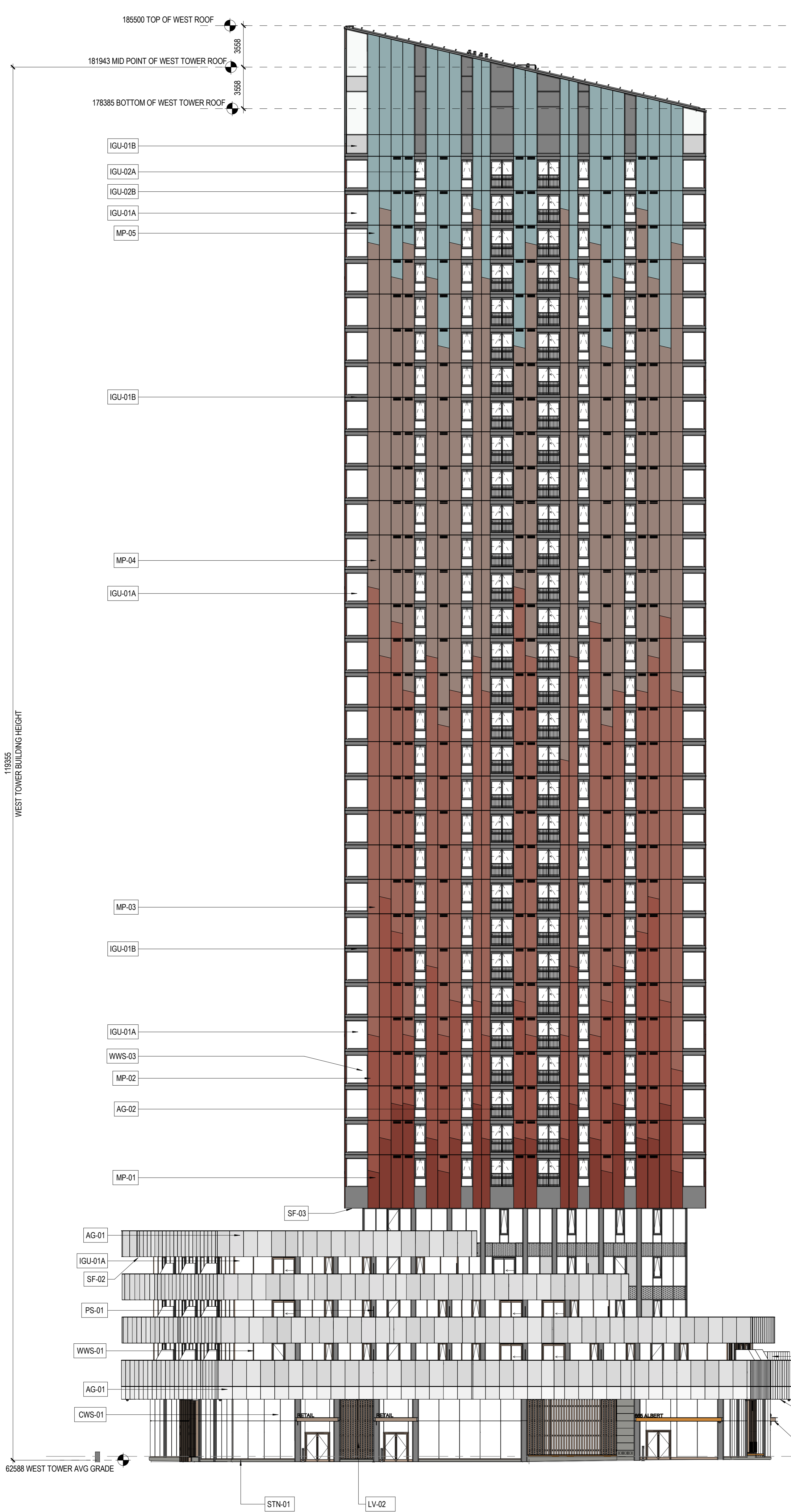
- CH-01 DECORATIVE ALUMINUM EXTRUSION CHANNEL (PT-108)

- BIPV-01 BUILDING INTEGRATED PHOTOVOLTAIC PANELS

- AG-01 PREFINISHED ALUMINUM PLATE, CUSTOM PERFORATED
- AG-02 PICKET GUARD

NOTE
1. REFER TO A70 SERIES FOR BIRD COLLISION DETERRENCE DRAWINGS FOR BIRD COLLISION DETERRENCE STRATEGIES AND ASSOCIATED EXTENTS

U T S R Q P N M L K J G F E D C B A PA PB PC



1 SOUTH ELEVATION
1 : 200

OVERALL SOUTH ELEVATION

SHEET NUMBER

A20-02

CONSULTANTS

- CIVIL**
TMIG
8800 Dufferin St., Suite 200, Vaughan, ON L4K 0C5
- STRUCTURAL**
RJC Engineers
1545 Carlin Ave., Suite 304, Ottawa, ON K1Z 9P9
- MEP**
Smith+Anderson
1600 Carling Ave., Suite 530, Ottawa, ON K1Z 1G3
- LANDSCAPING**
PFS Studio
1777 W 3rd Ave., Vancouver, BC V6J 1KJ
- CONSULTANT**
Two Row Architect
1804 6th Line, Oshawa, ON N4A 1M0
- CONTRACTOR**
EllisDon
2680 Queensview Dr., Ottawa, ON K2B 6J9

STAMP

PROJECT

**LEBRETON LIBRARY
PARCEL**
665 Albert St
Ottawa, ON
Canada



DREAM
30 Adelaide St. E., Suite 301,
Toronto, ON M5C 3H1
KEYPLAN



ISSUE CHART

Week	Issue	Date
4	ISSUED FOR 66% DD	2023-08-19
7	ISSUED FOR ELEVATOR & EXCAVATION TENDER	2023-01-27
12	ISSUED FOR FOUNDATION PERMIT	2023-02-17
14	ISSUED FOR PROGRESS REVIEW	2023-03-03
15	ISSUED FOR SITE PLAN CONTROL	2023-03-24

ISSUED FOR SITE PLAN CONTROL 2023-03-24

Job Number 44200
TITLE

**EAST TOWER OVERALL
ELEVATIONS**

SHEET NUMBER

A20-03

ELEVATIONS LEGEND

- MP-01 PREFINISHED ALUMINUM PLATE (PT-101)
- MP-02 PREFINISHED ALUMINUM PLATE (PT-102)
- MP-03 PREFINISHED ALUMINUM PLATE (PT-103)
- MP-04 PREFINISHED ALUMINUM PLATE (PT-104)
- MP-05 PREFINISHED ALUMINUM PLATE (PT-105)
- PT-106 PREFINISHED ALUMINUM
- PT-107 PREFINISHED ALUMINUM

STN-01 CUT GRANITE

- IGU-01A/IGU-02A/IGU-03A VISION GLAZING (NOTE 1)
- IGU-01B/TPG-01/TPG-02 SPANDREL GLAZING (NOTE 1)

- WS-01/WS-02 WIND & NOISE BARRIER, VISION GLASS (NOTE 1)
- PS-01 PRIVACY SCREEN, PATTERNED GLASS (NOTE 1)

- LV-01 WINDOW WALL LOUVER (PT-108)
- LV-02 PREFINISHED ALUMINUM PERFORATED LOUVER (PT-108)
- LV-03 PREFINISHED ALUMINUM LOUVER WITHIN SOFFIT (PT-108)

- FIN-01 VERTICAL SOLAR SHADE, GLAZED/OPAQUE BEHIND AS NOTED (PT-106)

- SF-01 WESTERN HEMLOCK EXTERIOR WOOD SOFFIT
- SF-02 PREFINISHED ALUMINUM PLATE SOFFIT (TO MATCH AG-01)
- SF-03 PREFINISHED ALUMINUM PLATE SOFFIT (PT-108)

- WWS-01 WINDOW WALL PODIUM (PT-106 & 108)
- WWS-02 WINDOW WALL TOWER REVEAL (PT-108)
- WWS-03 WINDOW WALL TOWER (PT-108)

- CWS-01 CURTAIN WALL SYSTEM (PT-106)

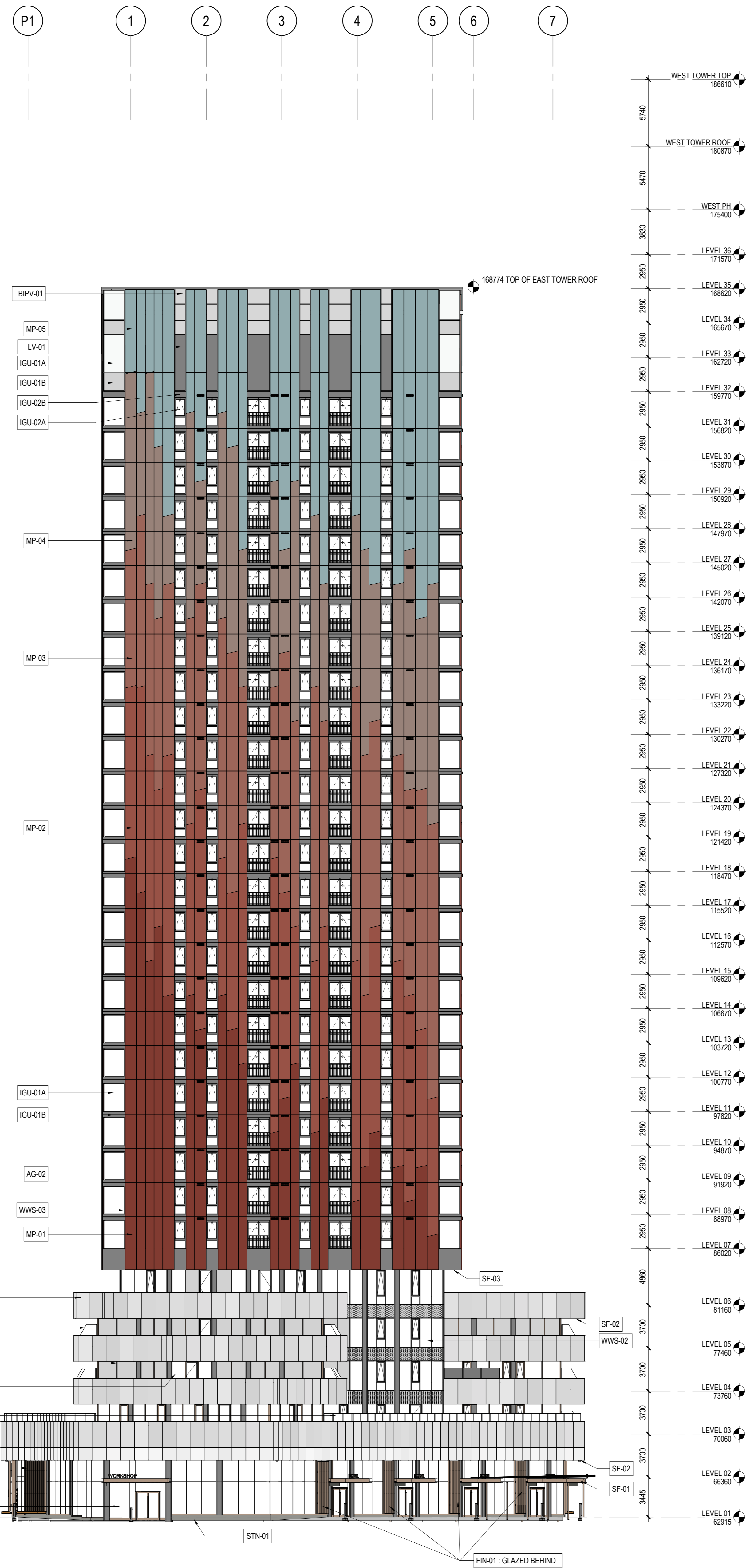
- CH-01 DECORATIVE ALUMINUM EXTRUSION CHANNEL (PT-108)

- BIPV-01 BUILDING INTEGRATED PHOTOVOLTAIC PANELS

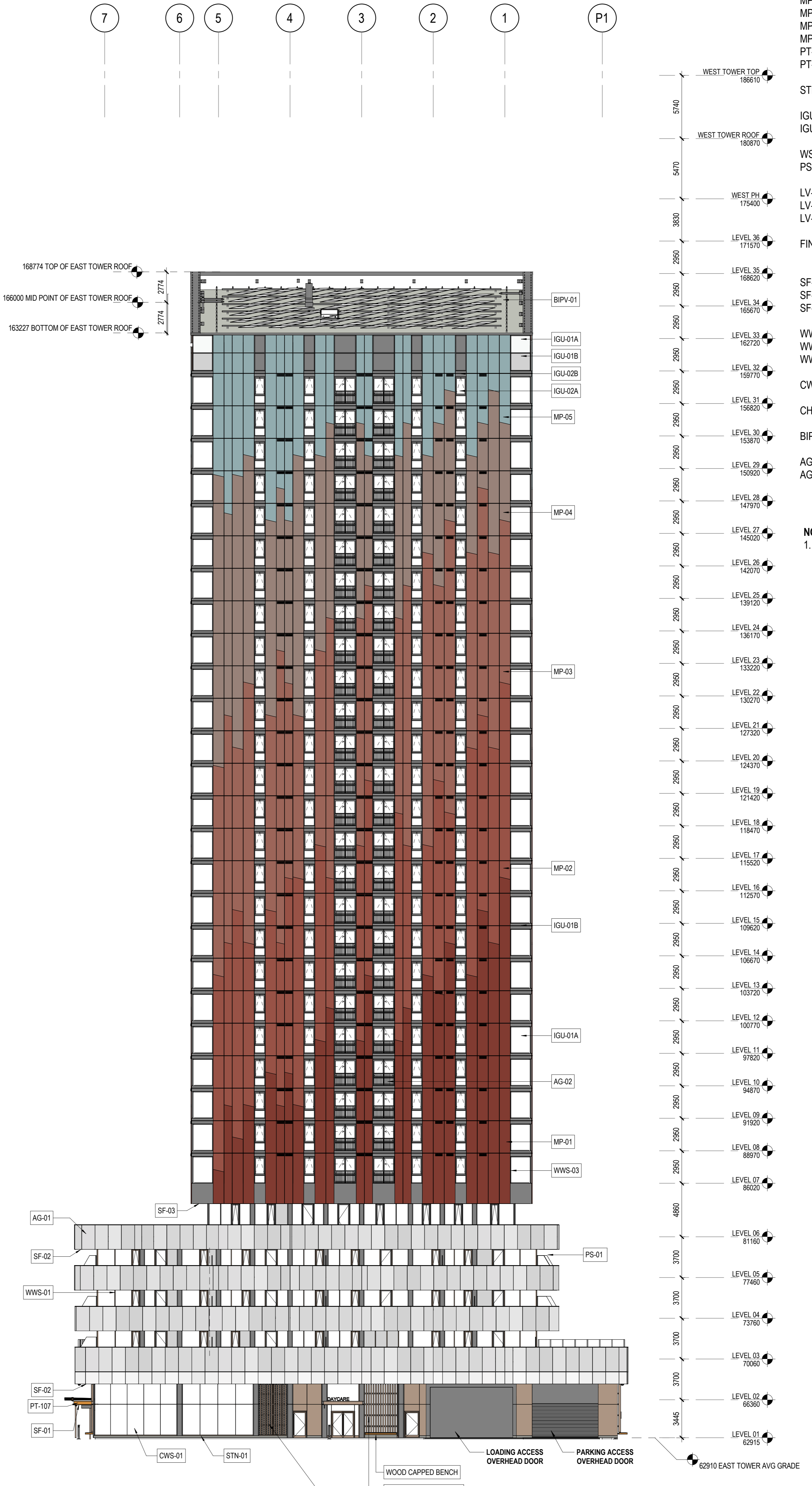
- AG-01 PREFINISHED ALUMINUM PLATE, CUSTOM PERFORATED
- AG-02 PICKET GUARD

NOTE

1. REFER TO A70 SERIES FOR BIRD COLLISION DETERRENCE DRAWINGS FOR BIRD COLLISION DETERRENCE STRATEGIES AND ASSOCIATED EXTENTS



1 EAST TOWER, WEST ELEVATION
1:200



2 EAST TOWER, EAST ELEVATION
1:200

CONSULTANTS

- CIVIL**
TMIG
8800 Dufferin St., Suite 200, Vaughan, ON L4K 0G5
- STRUCTURAL**
RJC Engineers
1545 Carlin Ave., Suite 304, Ottawa, ON K1Z 9P9
- MEP**
Smith+Anderson
1600 Carling Ave., Suite 530, Ottawa, ON K1Z 1G3
- LANDSCAPING**
PFS Studio
1777 W 3rd Ave., Vancouver, BC V5U 1KJ
- CONSULTANT**
Two Row Architect
1804 6th Line, Oshawa, ON N4A 1M0
- CONTRACTOR**
EllisDon
2680 Queensview Dr., Ottawa, ON K2B 6J9

STAMP

PROJECT

**LEBRETON LIBRARY
PARCEL**
665 Albert St
Ottawa, ON
Canada



DREAM
30 Adelaide St. E., Suite 301,
Toronto, ON M5C 3H1
KEYPLAN



ISSUE CHART

NO.	ISSUE	DATE
4	ISSUED FOR 16% DD	2023-08-19
10	ISSUED FOR ELEVATOR & EXCAVATION TENDER	2023-01-27
12	ISSUED FOR FOUNDATION PERMIT	2023-02-17
14	ISSUED FOR PROGRESS REVIEW	2023-03-03
15	ISSUED FOR SITE PLAN CONTROL	2023-03-24

ISSUED FOR SITE PLAN CONTROL 2023-03-24

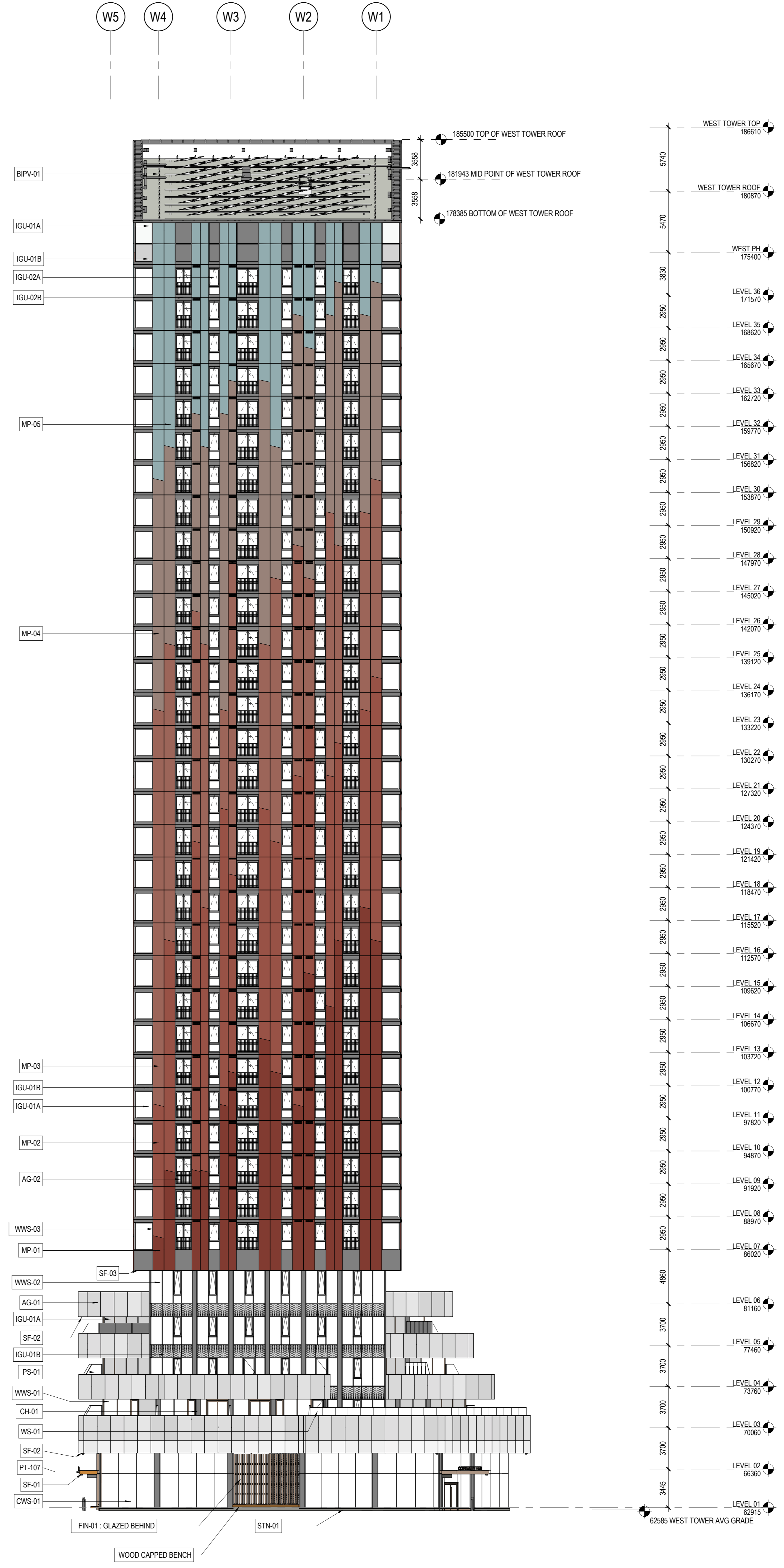
ELEVATIONS LEGEND

- MP-01 PREFINISHED ALUMINUM PLATE (PT-101)
- MP-02 PREFINISHED ALUMINUM PLATE (PT-102)
- MP-03 PREFINISHED ALUMINUM PLATE (PT-103)
- MP-04 PREFINISHED ALUMINUM PLATE (PT-104)
- MP-05 PREFINISHED ALUMINUM PLATE (PT-105)
- PT-106 PREFINISHED ALUMINUM
- PT-107 PREFINISHED ALUMINUM
- STN-01 CUT GRANITE
- IGU-01A/IGU-02A/IGU-03A VISION GLAZING (NOTE 1)
- IGU-01B/TPG-01/TPG-02 SPANDREL GLAZING (NOTE 1)
- WS-01/WS-02 WIND & NOISE BARRIER, VISION GLASS (NOTE 1)
- PS-01 PRIVACY SCREEN, PATTERNED GLASS (NOTE 1)
- LV-01 WINDOW WALL LOUVER (PT-108)
- LV-02 PREFINISHED ALUMINUM PERFORATED LOUVER (PT-108)
- LV-03 PREFINISHED ALUMINUM LOUVER WITHIN SOFFIT (PT-108)
- FIN-01 VERTICAL SOLAR SHADE, GLAZED/OPAQUE BEHIND AS NOTED (PT-106)
- SF-01 WESTERN HEMLOCK EXTERIOR WOOD SOFFIT
- SF-02 PREFINISHED ALUMINUM PLATE SOFFIT (TO MATCH AG-01)
- SF-03 PREFINISHED ALUMINUM PLATE SOFFIT (PT-108)
- WWS-01 WINDOW WALL PODIUM (PT-106 & 108)
- WWS-02 WINDOW WALL TOWER REVEAL (PT-108)
- WWS-03 WINDOW WALL TOWER (PT-108)
- CWS-01 CURTAIN WALL SYSTEM (PT-106)
- CH-01 DECORATIVE ALUMINUM EXTRUSION CHANNEL (PT-108)
- BIPV-01 BUILDING INTEGRATED PHOTOVOLTAIC PANELS
- AG-01 PREFINISHED ALUMINUM PLATE, CUSTOM PERFORATED
- AG-02 PICKET GUARD

NOTE
1. REFER TO A70 SERIES FOR BIRD COLLISION DETERRENCE DRAWINGS FOR BIRD COLLISION DETERRENCE STRATEGIES AND ASSOCIATED EXTENTS



1 WEST TOWER, WEST ELEVATION
1 : 200



2 WEST TOWER, EAST ELEVATION
1 : 200

CONSULTANTS

- CIVIL**
TMIG
8800 Dufferin St., Suite 200, Vaughan, ON L4K 0C5
- STRUCTURAL**
RJC Engineers
1545 Carling Ave., Suite 304, Ottawa, ON K1Z 9P9
- MEP**
Smith+Anderson
1600 Carling Ave., Suite 530, Ottawa, ON K1Z 1G3
- LANDSCAPING**
PFS Studio
1777 W 3rd Ave., Vancouver, BC V5U 1KJ
- CONSULTANT**
Two Row Architect
1804 6th Line, Orillia, ON N0A 1M0
- CONTRACTOR**
EllisDon
2680 Queensview Dr., Ottawa, ON K2B 6J9

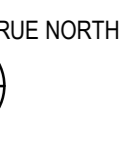
STAMP

PROJECT

**LEBRETON LIBRARY
PARCEL**
665 Albert St
Ottawa, ON
Canada



DREAM
30 Adelaide St. E., Suite 301,
Toronto, ON M5C 3H1
KEYPLAN



ISSUE CHART

NO.	DATE	DESCRIPTION
1	2023-04-29	ISSUED FOR SPA / ZBA / SPA
2	2022-05-27	ISSUED FOR 66% SD
4	2022-08-19	ISSUED FOR 66% DO
6	2022-11-09	ISSUED FOR SPA RESUBMISSION
7	2022-11-09	ISSUED FOR NCC 99% FLUIDITA
10	2023-02-03	RESUBMITTED FOR SPA & NCC 99%
13	2023-03-24	ISSUED FOR SITE PLAN CONTROL

ISSUED FOR SITE PLAN CONTROL, 2023-03-24



ENLARGED RENDERED ELEVATION - WEST TOWER, SOUTH ELEVATION

Job Number _____

TITLE _____

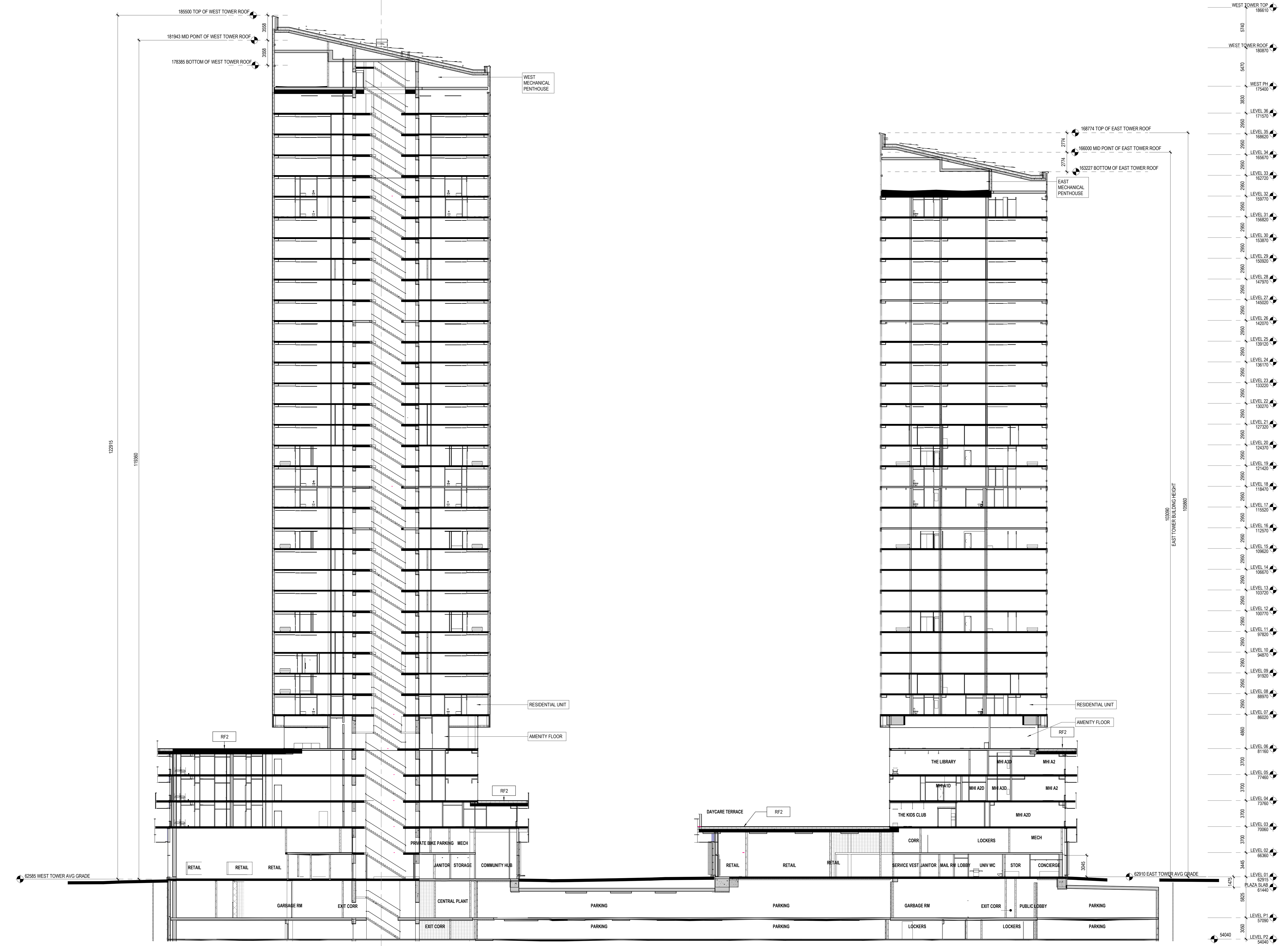
ENLARGED RENDERED ELEVATION

SHEET NUMBER _____

A21-90

© 2022 KPMB and Perkins & Will

U T S R Q P N M L K J H G F E D C B A PA PB PC



1 OVERALL SECTION
1:200

CONSULTANTS

CIVIL	TMIG
STRUCTURAL	RJC Engineers
MECHANICAL	Smith+Anderson
ELECTRICAL	PFS Studio
CONTRACTOR	Two Row Architect
CONTRACTOR	EllisDon

PROJECT

LEBRETON LIBRARY PARCEL
665 Albert St
Ottawa, ON
Canada

DREAM

30 Adelaide St. E., Suite 301,
Toronto, ON M5C 3H1
KEYPLAN

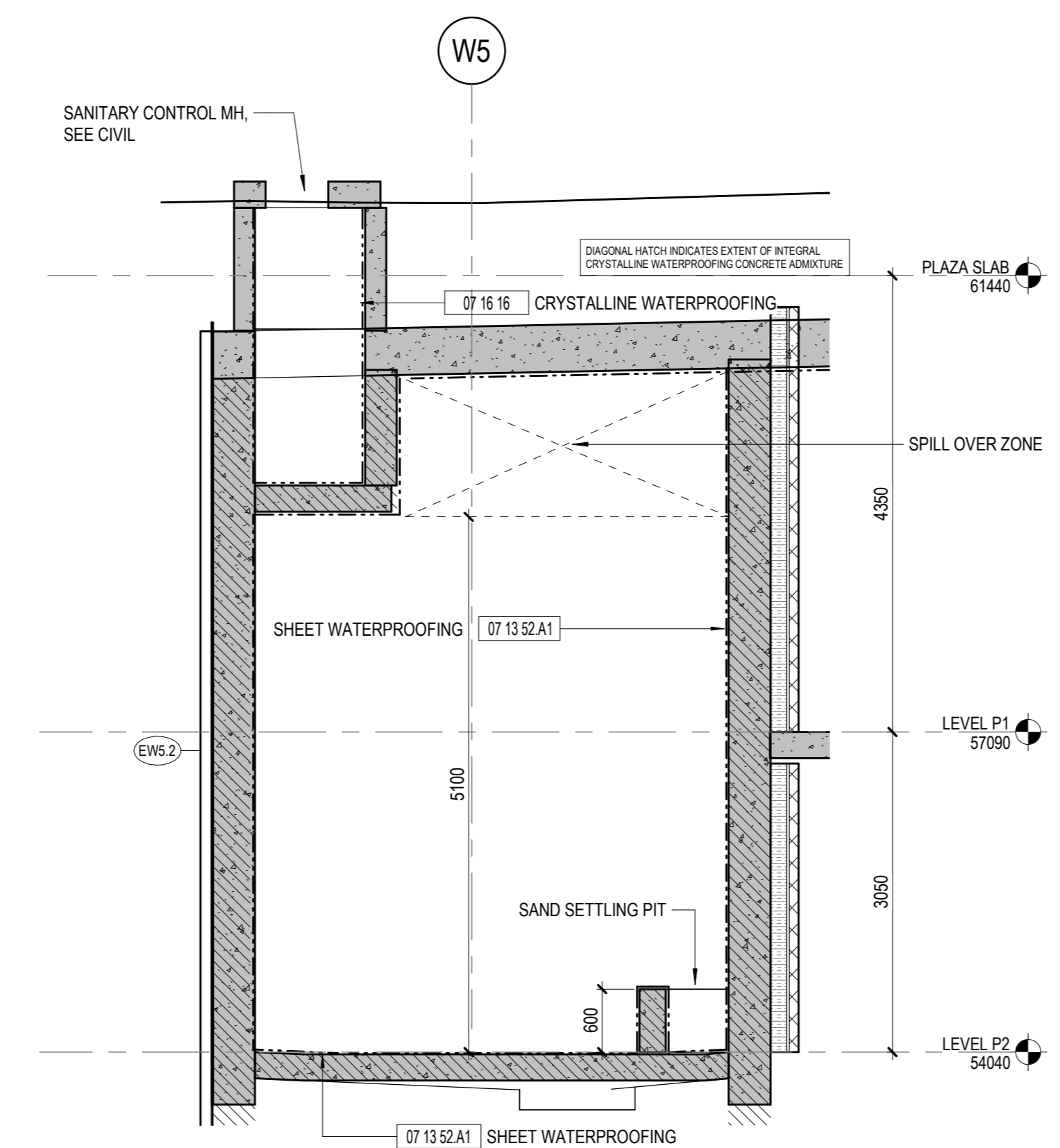
ISSUE CHART

NO.	ISSUE	DATE
4	ISSUED FOR PERMITS	2023-08-19
7	ISSUED FOR ELEVATOR & EXCAVATION TENDER	2023-01-27
12	ISSUED FOR FOUNDATION PERMIT	2023-02-17
14	ISSUED FOR PROGRESS REVIEW	2023-03-03
15	ISSUED FOR SITE PLAN CONTROL	2023-03-24

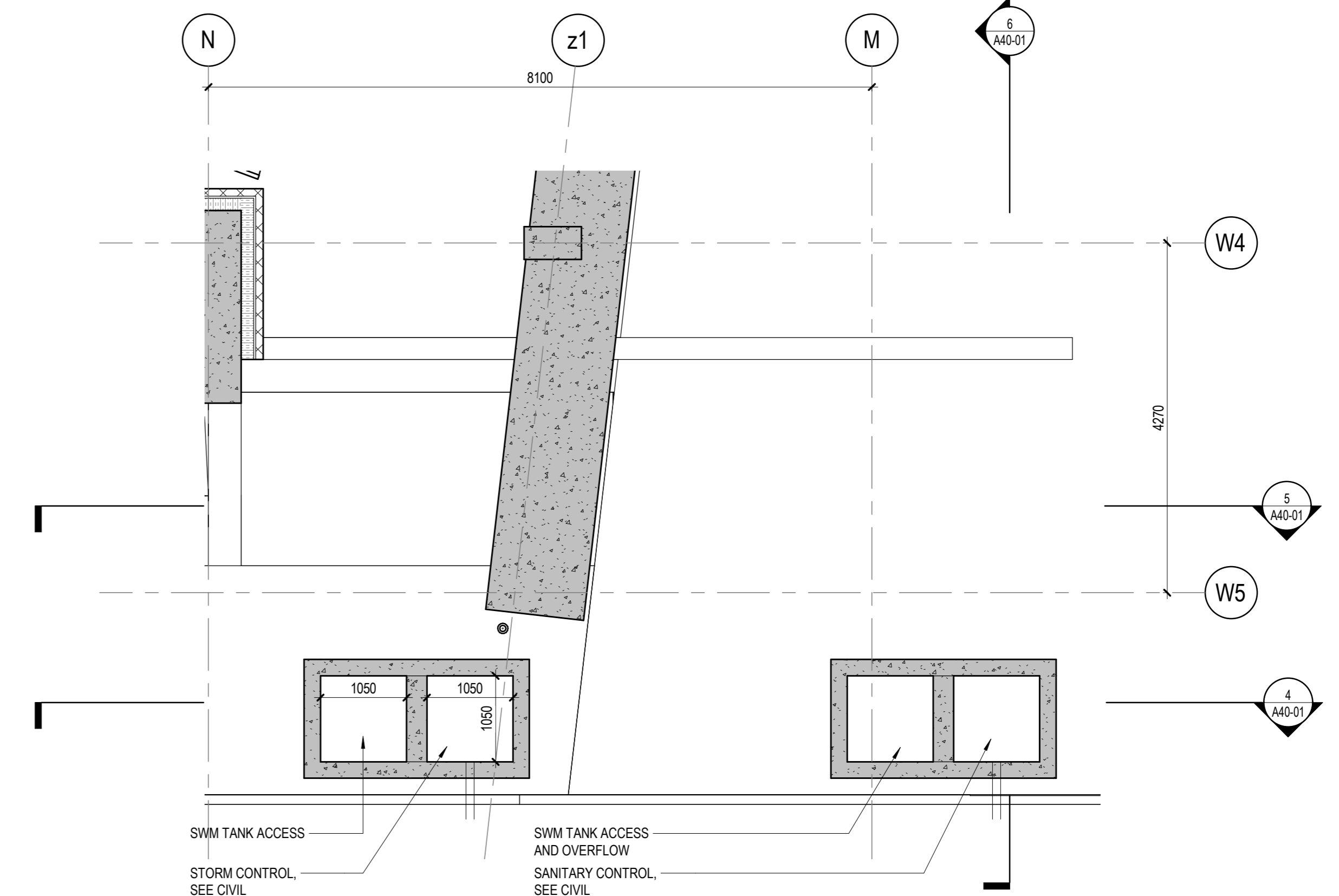
ISSUED FOR SITE PLAN CONTROL 2023-03-24

NO.	DATE	DESCRIPTION
10	2023-01-27	ISSUED FOR ELEVATOR & EXCAVATION TENDER
11	2023-02-03	RESUBMITTED FOR SPA & NCC 97%.
12	2023-02-17	ISSUED FOR FOUNDATION PERMIT
14	2023-03-03	ISSUED FOR PROGRESS REVIEW
15	2023-03-24	ISSUED FOR SITE PLAN CONTROL

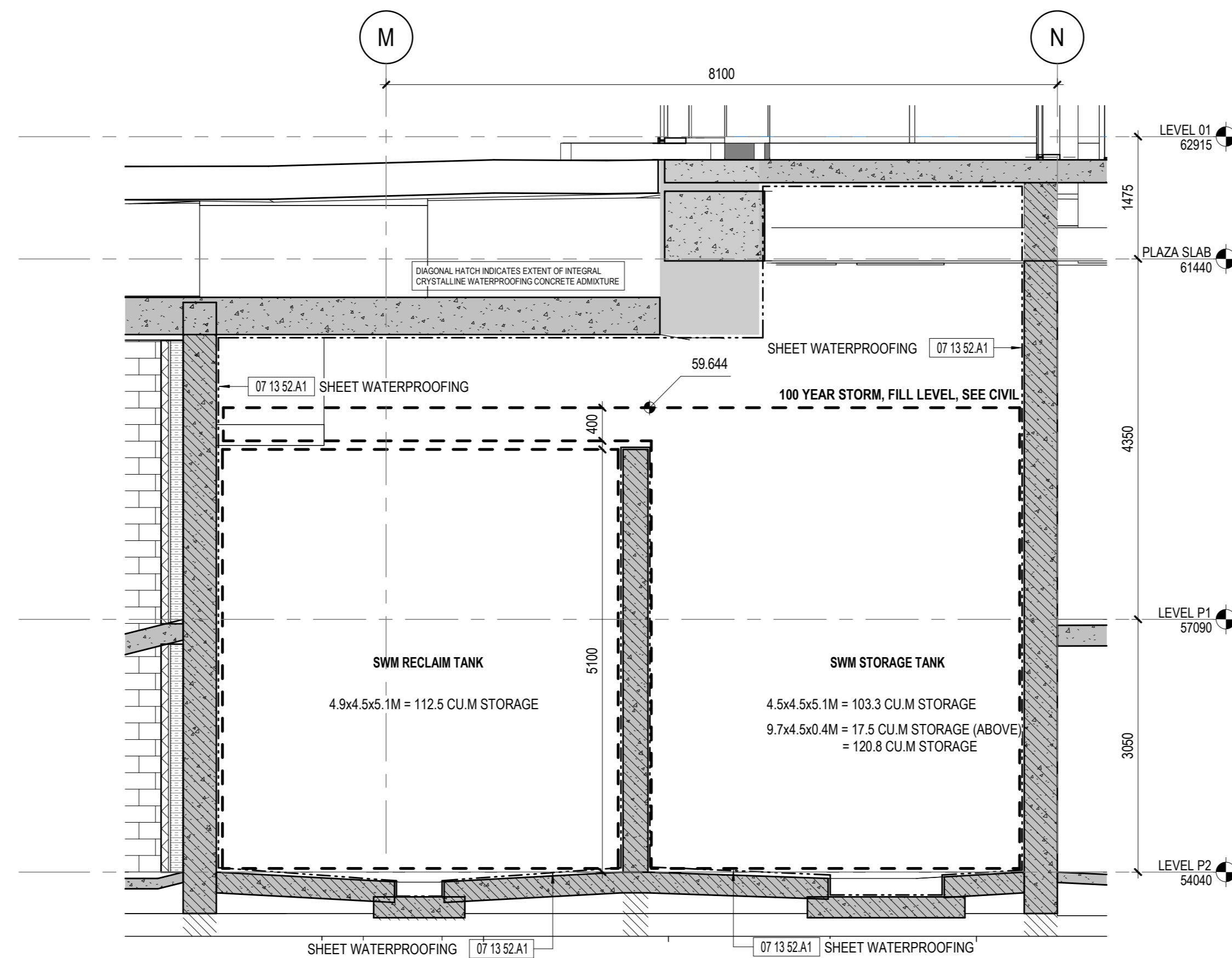
ISSUED FOR SITE PLAN CONTROL 2023-03-24



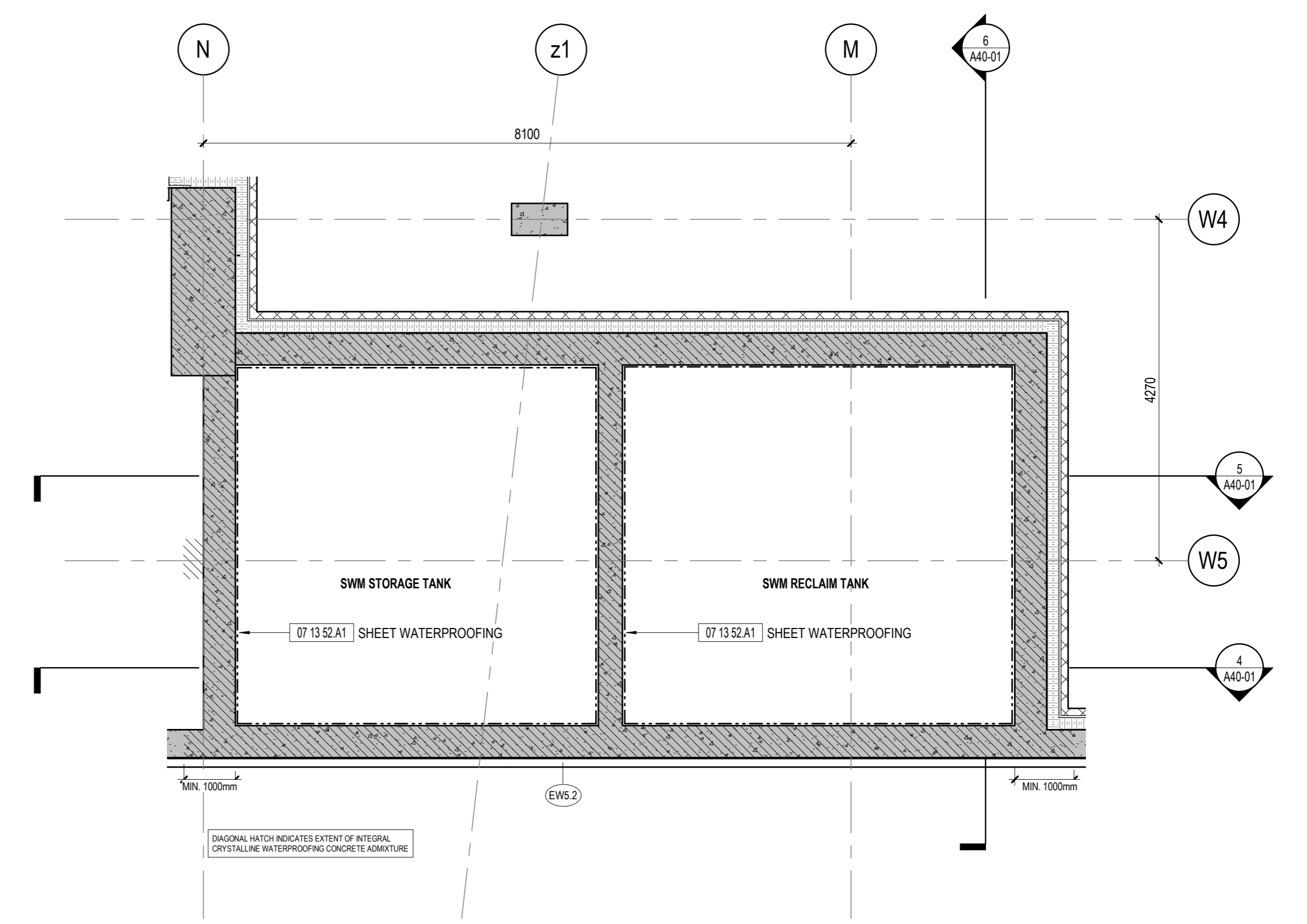
6 N-S SWM TANK SECTION - LOOKING WEST
1:50



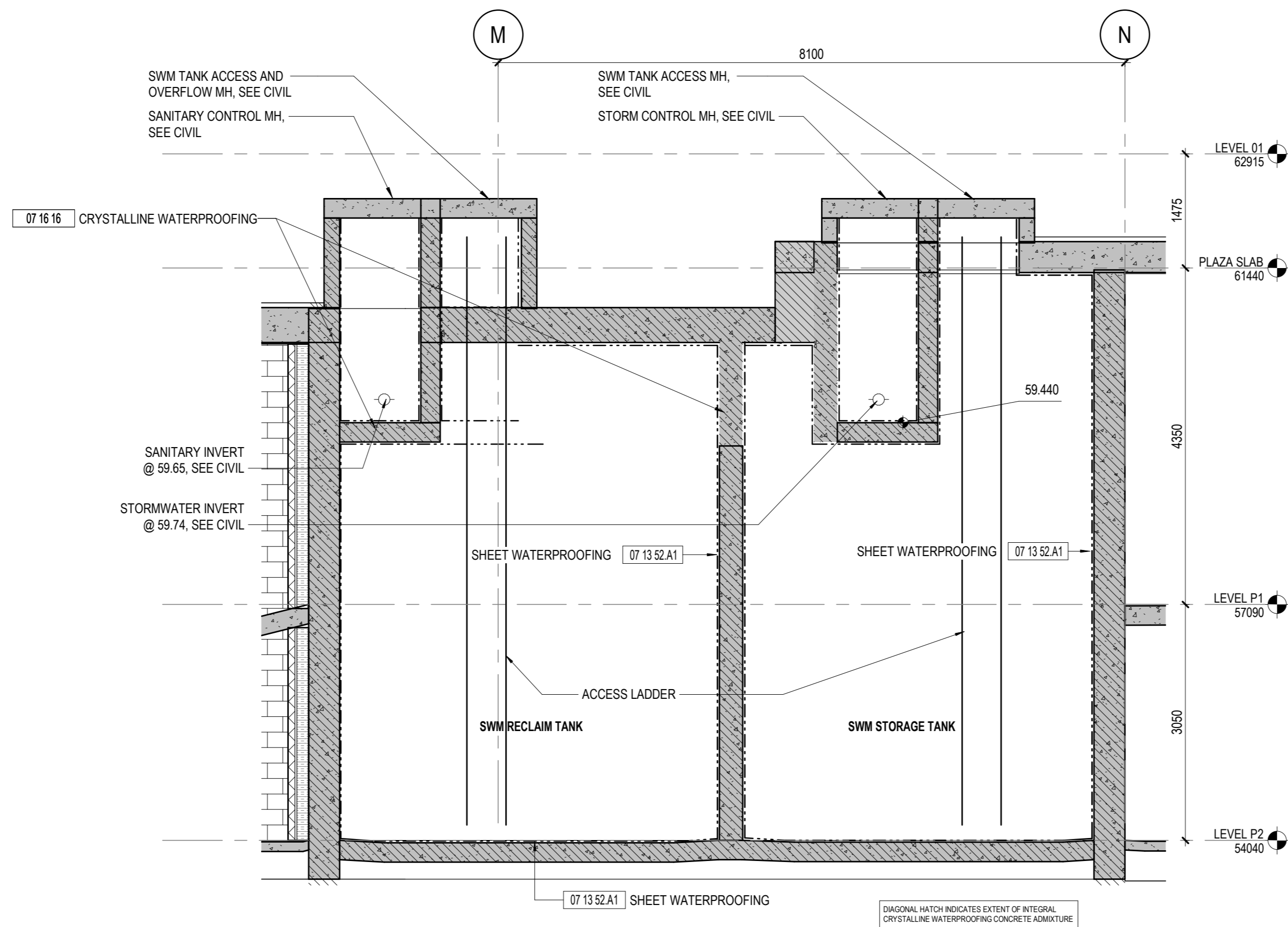
3 SWM TANK PLAN - PLAZA SLAB
1:50



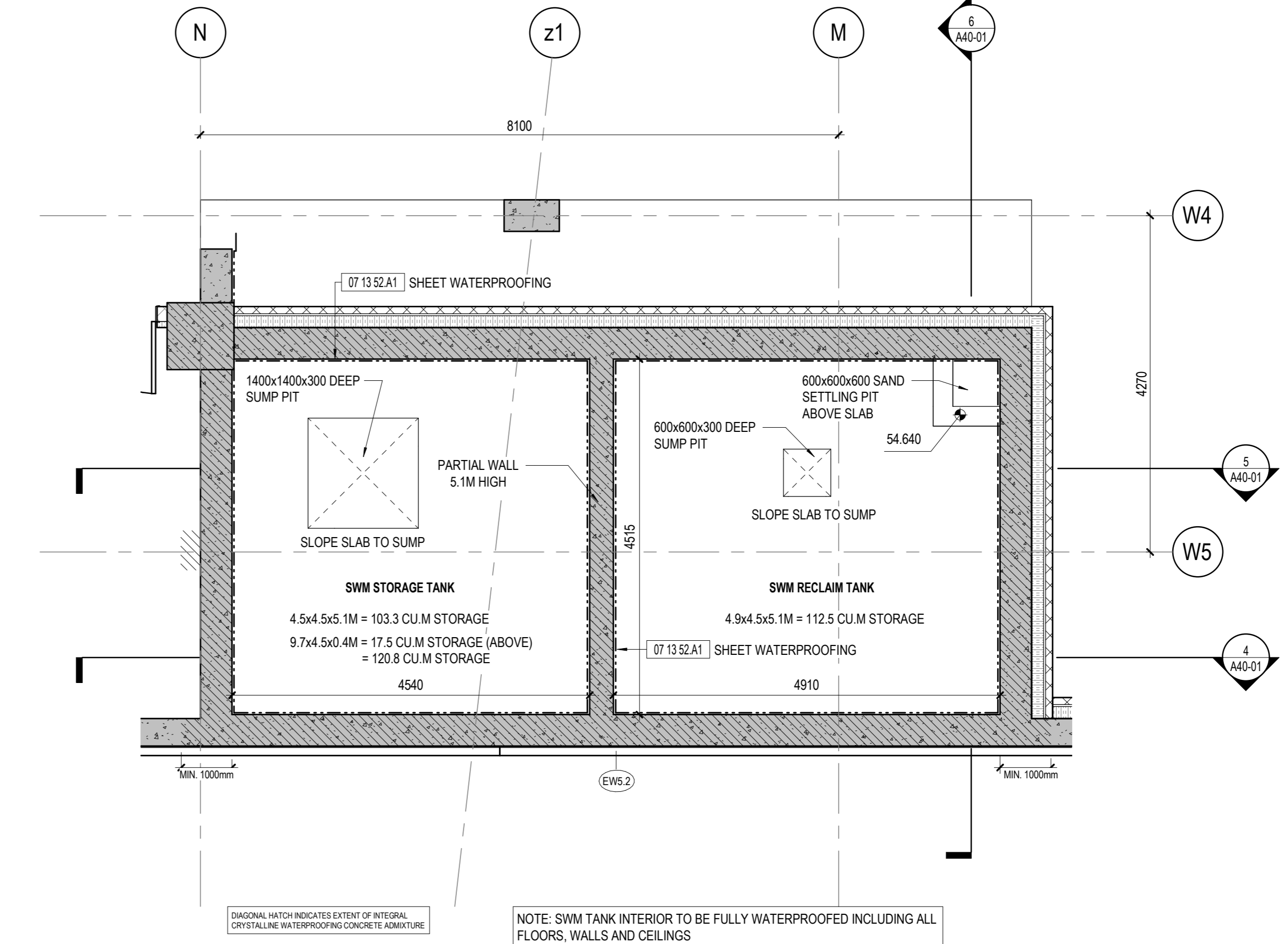
5 E-W SWM TANK SECTION LOOKING SOUTH 2
1:50



2 SWM TANK PLAN - LEVEL P1
1:50



4 E-W SWM TANK SECTION LOOKING SOUTH
1:50



1 SWM TANK PLAN - LEVEL P2
1:50

CONSULTANTS

CIVIL
TMIG
8800 Dufferin St., Suite 200, Vaughan, ON L4K 0C5

STRUCTURAL
RJC Engineers
1545 Carling Ave., Suite 304, Ottawa, ON K1Z 9P9

MEP
Smith+Anderson
1600 Carling Ave., Suite 530, Ottawa, ON K1Z 1G3

LANDSCAPING
PFS Studio
1777 W 3rd Ave., Vancouver, BC V5U 1KJ

CONSULTANT
Two Row Architect
1804 6th Line, Orillia, ON N0A 1M0

CONTRACTOR
EllisDon
2680 Queensview Dr., Ottawa, ON K2B 6J9

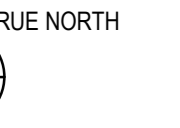
STAMP

PROJECT

**LEBRETON LIBRARY
PARCEL**
665 Albert St
Ottawa, ON
Canada



DREAM
30 Adelaide St. E., Suite 301,
Toronto, ON M5C 3H1
KEYPLAN



ISSUE CHART

NO.	ISSUE	DATE
3	ISSUED FOR 100% SD	2023-06-10
4	ISSUED FOR 66% DD	2022-06-19
5	ISSUED FOR 100% DD	2022-09-30
7	ISSUED FOR NCC 99% FLUORA	2022-11-09
10	REISSUED FOR SPA & NCC 99%	2023-02-03
12	ISSUED FOR PROGRESS REVIEW	2023-03-03
13	ISSUED FOR SITE PLAN CONTROL	2023-03-24

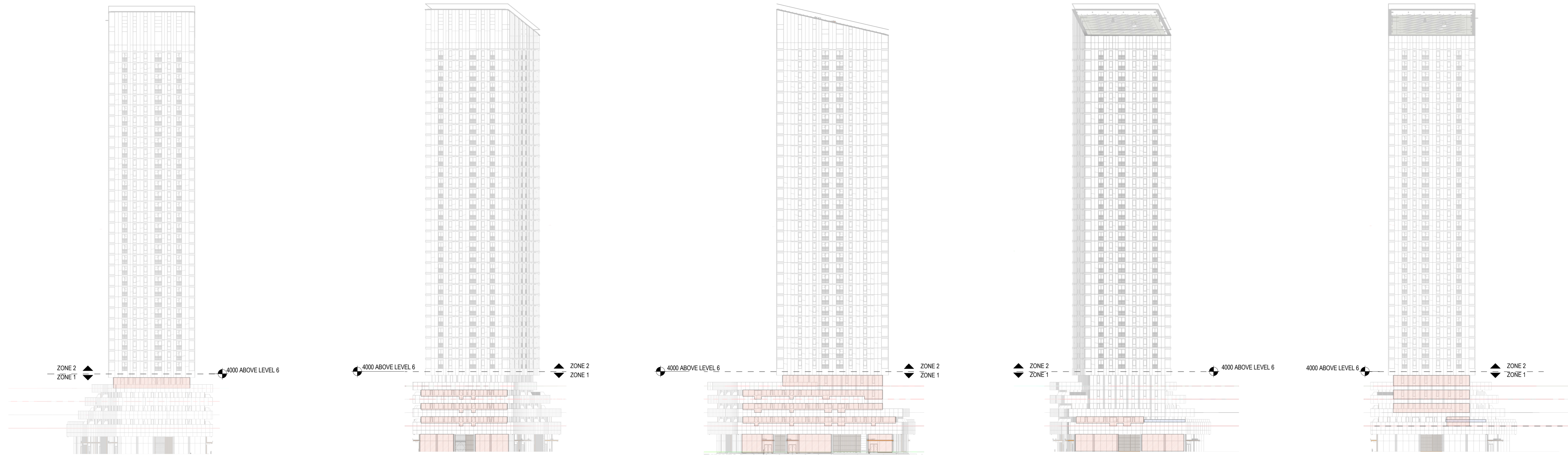
ISSUED FOR SITE PLAN CONTROL: 2023-03-24

BUILDING ENCLOSURE

ALL SURFACES CREATING FLY-THROUGH CONDITIONS (VISION & SPANDREL GLAZING)
TRIPLE GLAZED INSULATED GLASS UNIT WITH STAGGERED 3MM DIAMETER ACID ETCHED DOT AT 50MM CENTRES ON SURFACE #1, LOW-E COATING ON SURFACE #2 AND #4.

SITE ELEMENTS

WS-01 TEMPERED LAMINATED GLASS NOISE AND WIND BARRIER WITH STAGGERED 3MM DIAMETER ACID ETCHED DOT AT 50MM CENTRES ON SURFACE #1



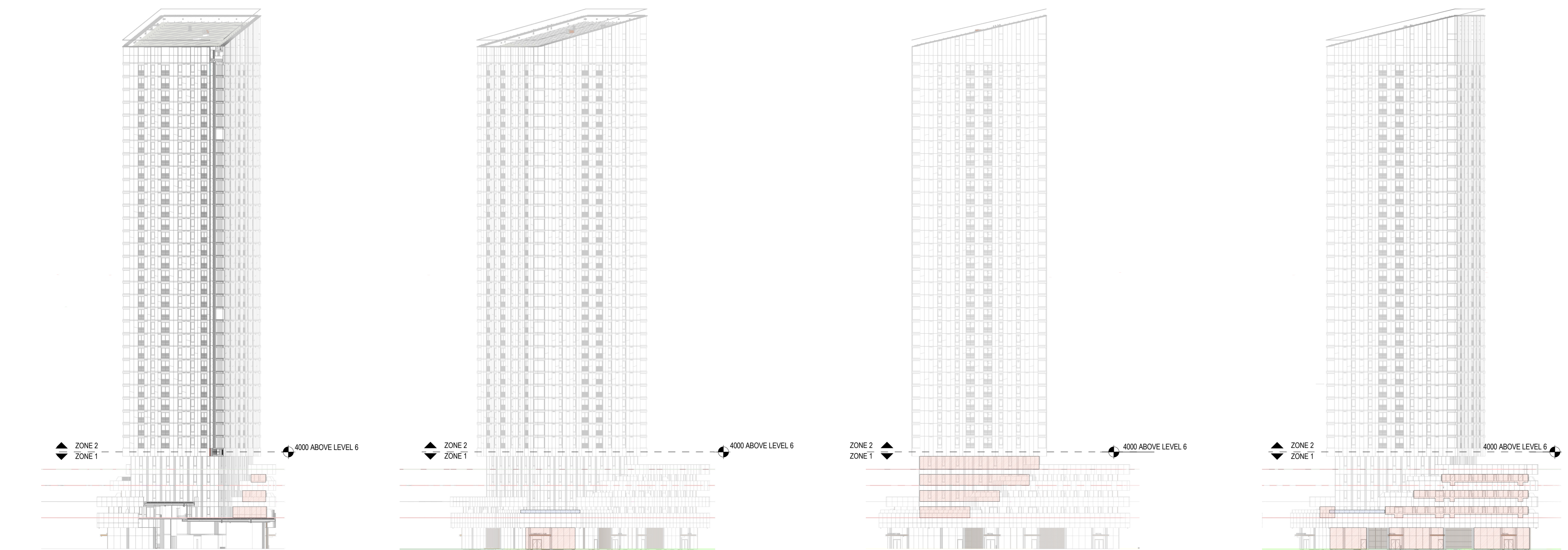
9 ELEV - WEST BUILDING - WEST TOWER
1:500

8 ELEV - WEST BUILDING - WEST PODIUM
1:500

7 ELEV - WEST BUILDING - SOUTH ELEVATION
1:500

6 ELEV - WEST BUILDING - CENTRAL
PARKETTE
1:500

5 ELEV - WEST BUILDING - EAST TOWER
1:500



4 ELEV - WEST BUILDING - EAST
ELEVATION NORTH TERRACE
1:500

3 ELEV - WEST BUILDING - GATHERING
CIRCLE
1:500

2 ELEV - WEST BUILDING - NORTH TOWER
1:500

1 ELEV - WEST BUILDING - NORTH
PODIUM
1:500

Autodesk Docs\U:\Breton Place Library\B01_Dream_Libreton_P22_SPA.rvt

2024/02/13 1:37:33 PM

DOT:12-22-2023

Job Number _____
TITLE
**BIRD COLLISION
DETERRENCE - WEST
TOWER**
SHEET NUMBER

A70-10

© 2022 KPMB and Perkins & Will

CONSULTANTS

- CIVIL**
TMIG
8800 Dufferin St., Suite 200, Vaughan, ON L4K 0C5
- STRUCTURAL**
RJC Engineers
1545 Carling Ave., Suite 304, Ottawa, ON K1Z 9P9
- MEP**
Smith+Anderson
1600 Carling Ave., Suite 530, Ottawa, ON K1Z 1G3
- LANDSCAPING**
PFS Studio
1777 W 3rd Ave., Vancouver, BC V5J 1KJ
- CONSULTANT**
Two Row Architect
1804 6th Line, Orillia, ON N0A 1M0
- CONTRACTOR**
EllisDon
2680 Queensview Dr., Ottawa, ON K2B 6J9

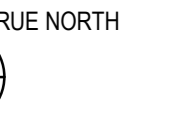
STAMP

PROJECT

**LEBRETON LIBRARY
PARCEL**
665 Albert St
Ottawa, ON
Canada



DREAM
30 Adelaide St. E., Suite 301,
Toronto, ON M5C 3H1
KEYPLAN



ISSUE CHART

ISSUE	DATE
3	2023-06-10
4	2022-06-19
5	2022-09-30
7	2022-11-09
10	2023-02-03
12	2023-03-03
13	2023-03-24

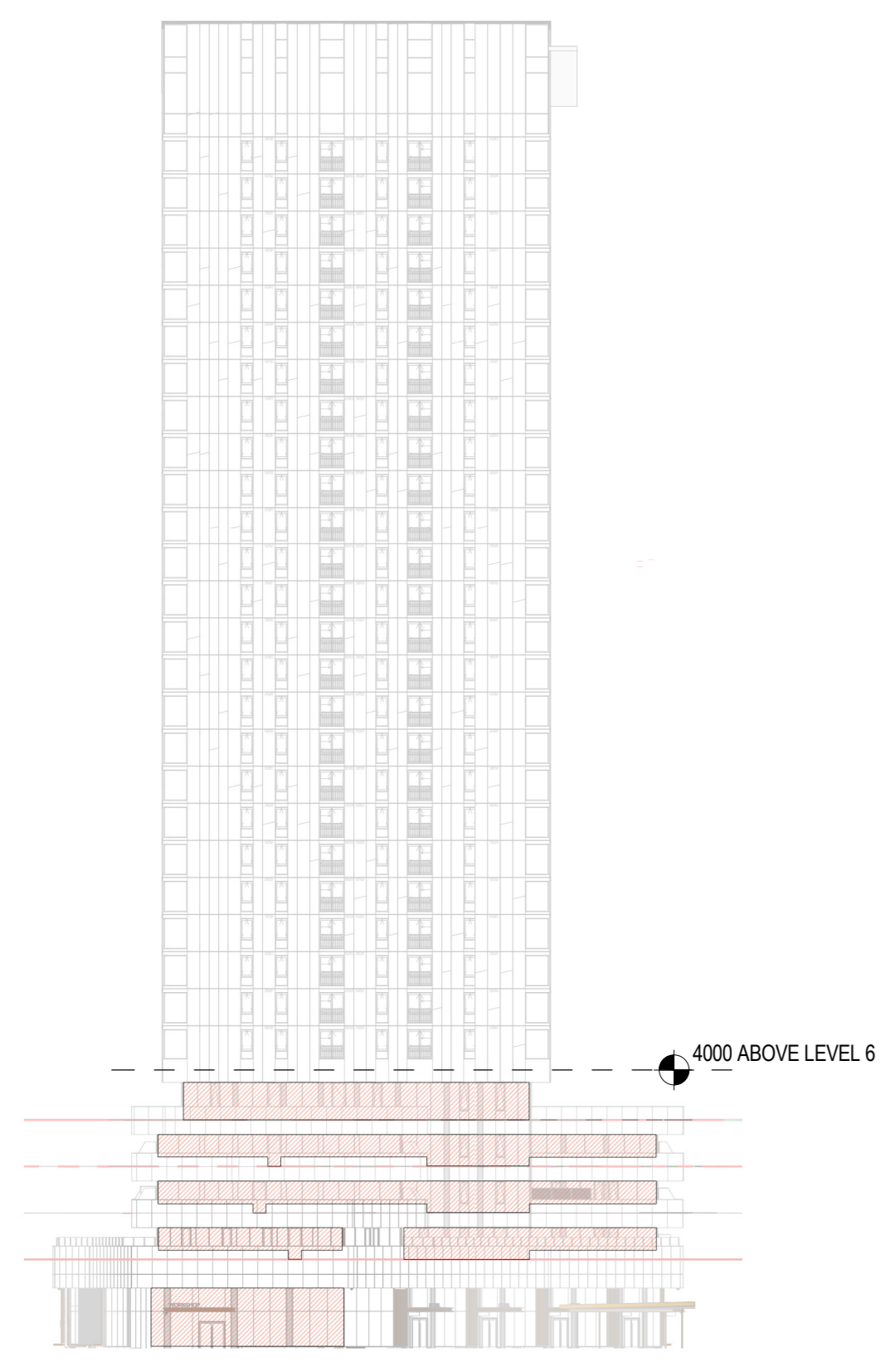
ISSUED FOR SITE PLAN CONTROL, 2023 - 03 - 24

BUILDING ENCLOSURE

ALL SURFACES CREATING FLY THROUGH CONDITIONS (VISION & SPANDREL GLAZING)
TRIPLE GLAZED INSULATED GLASS UNIT WITH STAGGERED 5MM DIAMETER ACID ETCHED DOT AT 50MM CENTRES ON SURFACE #1, LOW-E COATING ON SURFACE #2 AND #4.

SITE ELEMENTS

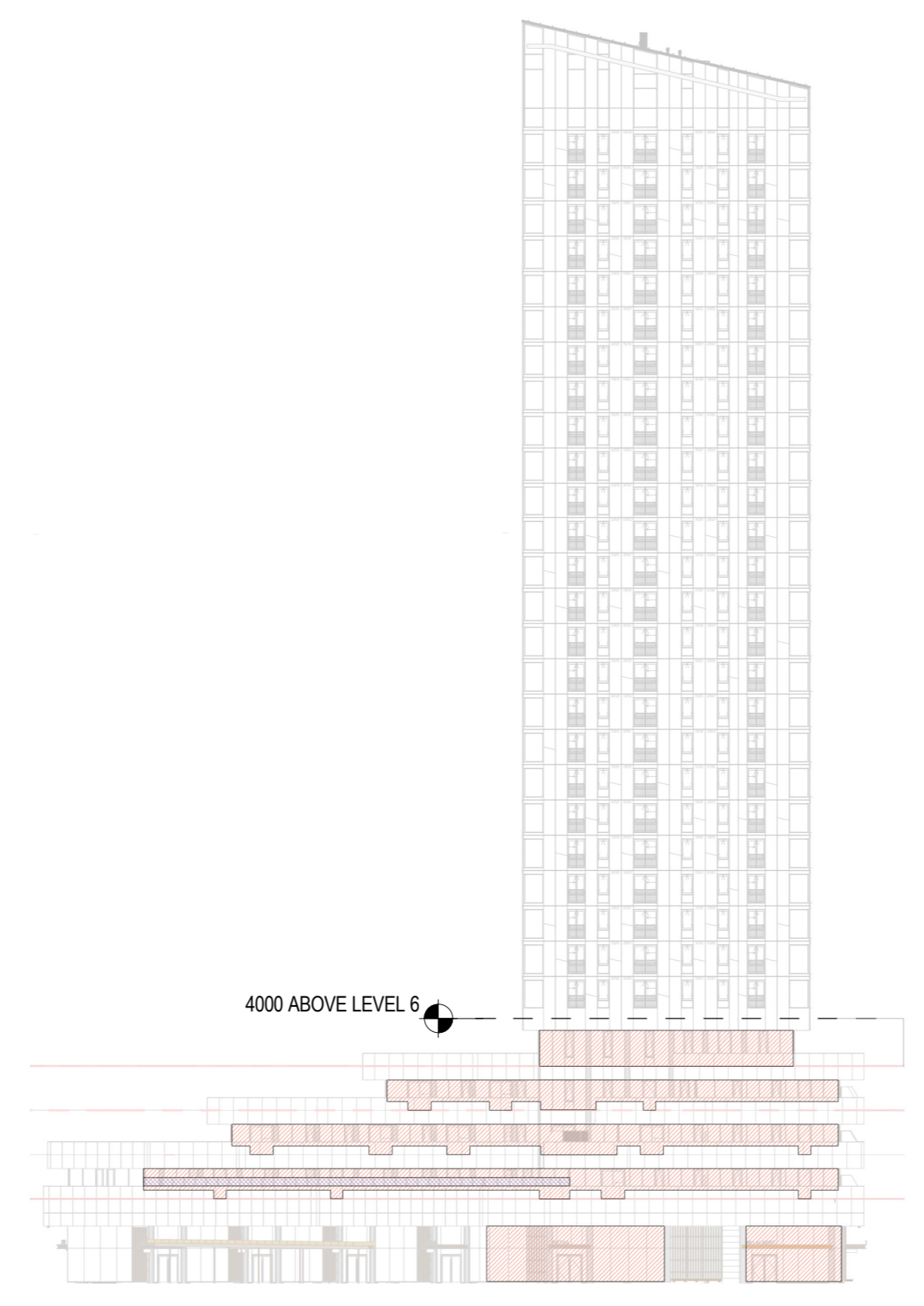
WS-61 TEMPERED LAMINATED GLASS NOISE AND WIND BARRIER WITH STAGGERED 5MM DIAMETER ACID ETCHED DOT AT 50MM CENTRES ON SURFACE #1



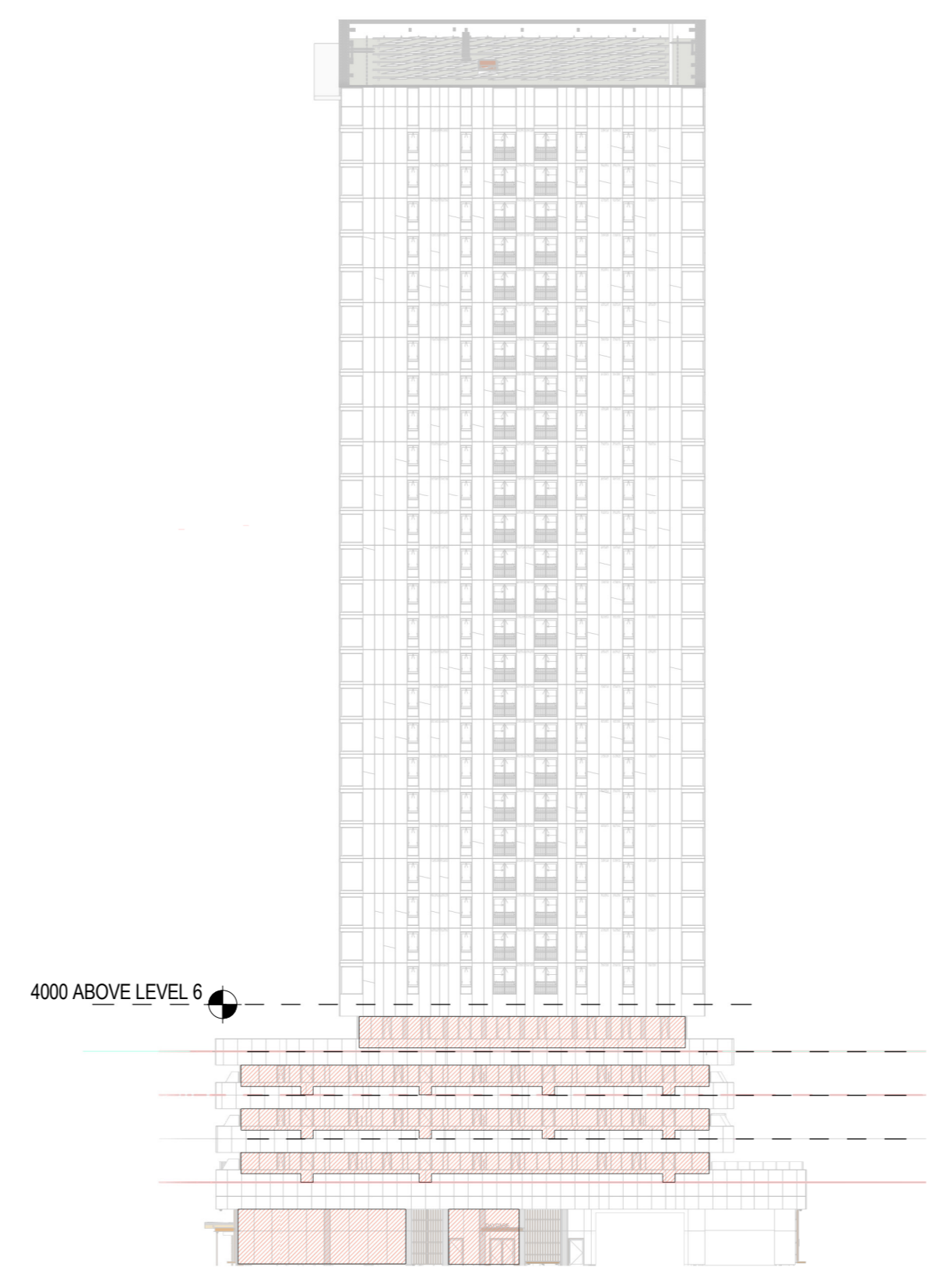
7 BIRD COLLISION DETERRENCE - EAST BUILDING - WEST ELEVATION
1:500



6 BIRD COLLISION DETERRENCE - EAST BUILDING - CENTRAL PARKETTE ELEVATION
1:500



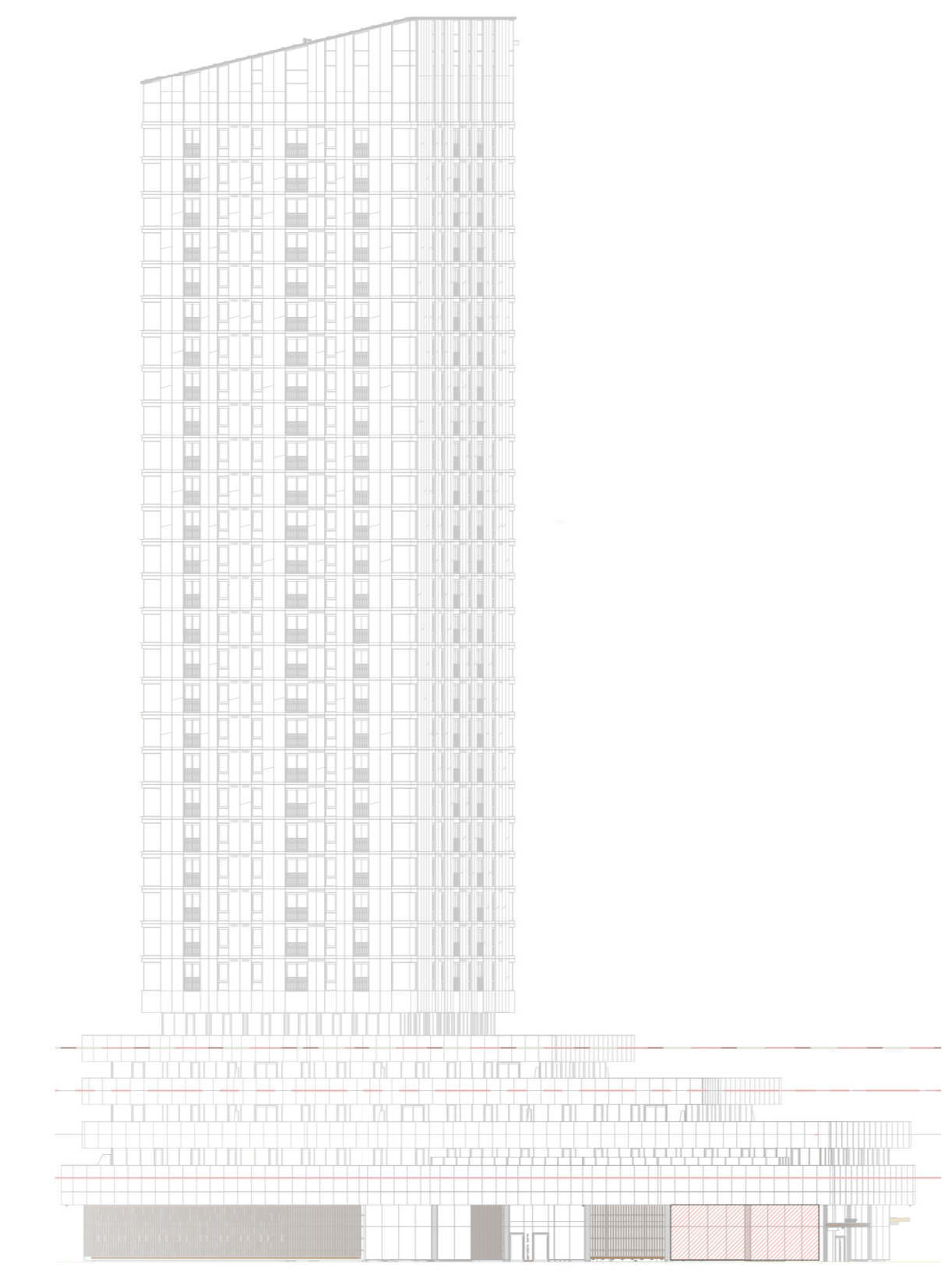
5 BIRD COLLISION DETERRENCE - EAST BUILDING - SOUTH ELEVATION
1:500



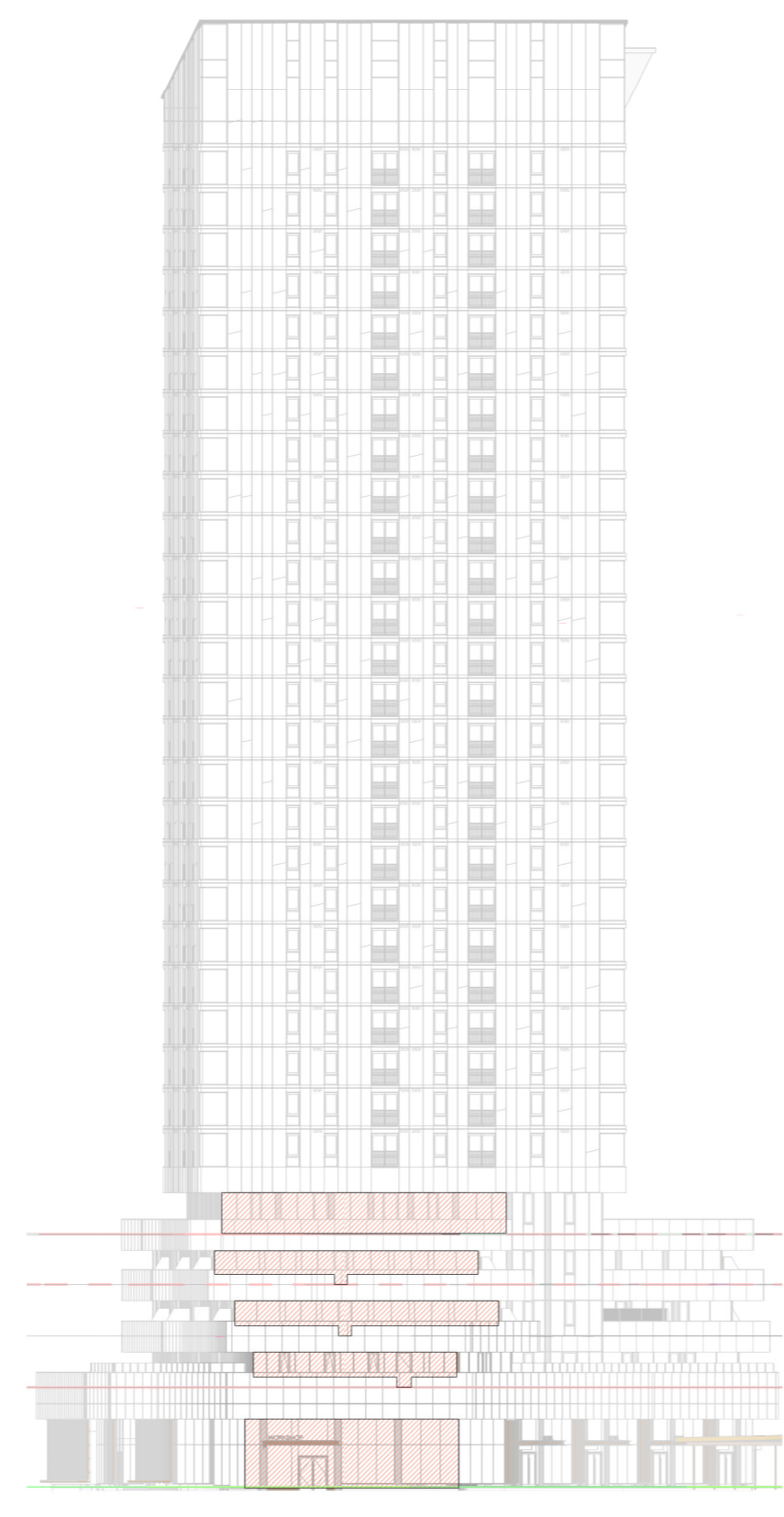
4 BIRD COLLISION DETERRENCE - EAST BUILDING - EAST ELEVATION
1:500



3 BIRD COLLISION DETERRENCE - EAST BUILDING - NORTH ELEVATION
1:500



2 BIRD COLLISION DETERRENCE - EAST BUILDING - PROMENADE ELEVATION
1:500



1 BIRD COLLISION DETERRENCE - EAST BUILDING - GATHERING CIRCLE ELEVATION
1:500

Job Number _____ TITLE _____

**BIRD COLLISION
DETERRENCE - EAST
TOWER**

SHEET NUMBER

A70-11