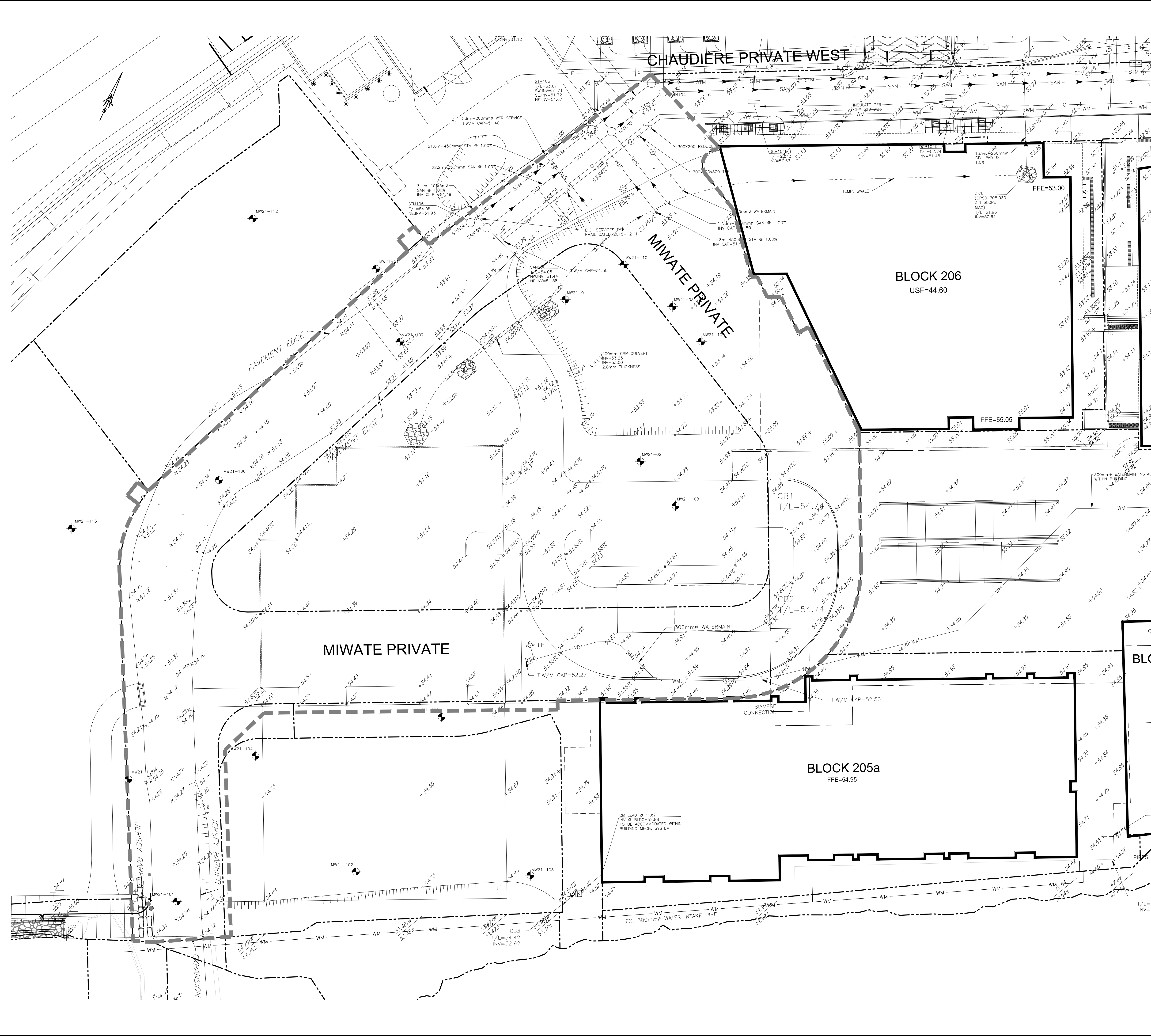


TITLEBLOCK 24x36 VERT ENG 3.0
 PRINT DATE: 2022/03/14 - PAPER SIZE: ISO A1 (594.00 x 841.00 MM)
 PATH: Z:\Cima-C100\Projects\A0000001_20\Block 204\Drawings\480_Civil\1_Topo.dwg / LAYOUT: C001_Topo



EXISTING		PROPOSED	
WM	WATERMAIN	WM	WATERMAIN
SS	SANITARY SEWER	SS	SANITARY SEWER
STM	STORM SEWER	STM	STORM SEWER
D	DRAIN	D	DRAIN
G	GAS LINE (APPROX. LOC.)	G	GAS LINE (APPROX. LOC.)
T	UNDERGROUND TELEPHONE (APPROX. LOC.)	T	UNDERGROUND TELEPHONE (APPROX. LOC.)
CA	UNDERGROUND TRAFFIC CABLE (APPROX. LOC.)	CA	UNDERGROUND TRAFFIC CABLE (APPROX. LOC.)
X	FENCE	X	FENCE
E	UNDERGROUND ELECTRICITY (APPROX. LOC.)	E	UNDERGROUND ELECTRICITY (APPROX. LOC.)
OH	OVERHEAD WIRES	OH	OVERHEAD WIRES
TL	TOP OF SLOPE	TL	TOP OF SLOPE
BC	BOTTOM OF SLOPE	BC	BOTTOM OF SLOPE
CB	CATCHBASIN	CB	CATCHBASIN
MHC	MANHOLE/CATCHBASIN	MHC	MANHOLE/CATCHBASIN
MH	MANHOLE	MH	MANHOLE
FH	FIRE HYDRANT	FH	FIRE HYDRANT
V	VALVE	V	VALVE
R	REDUCER	R	REDUCER
T	TEE	T	TEE
VC	VALVE CHAMBER	VC	VALVE CHAMBER
PU	PRIVATE UTILITIES (WATERMAIN)	PU	PRIVATE UTILITIES (WATERMAIN)
NGV	NATURAL GAS VALVE	NGV	NATURAL GAS VALVE
S	SIGN	S	SIGN
TS	STOP SIGN	TS	STOP SIGN
TL	TRAFFIC LIGHT	TL	TRAFFIC LIGHT
EP	ELECTRICITY POLE	EP	ELECTRICITY POLE
TP	TELEPHONE POLE	TP	TELEPHONE POLE
EL	ELECT.-TEL-STREET LIGHT POLE	EL	ELECT.-TEL-STREET LIGHT POLE
ET	ELECT.-TEL-TRANSFORMER POLE	ET	ELECT.-TEL-TRANSFORMER POLE
PSL	PRIVATE STREET LIGHT	PSL	PRIVATE STREET LIGHT
EMH	ELECTRICITY MANHOLE	EMH	ELECTRICITY MANHOLE
TMH	TELEPHONE MANHOLE	TMH	TELEPHONE MANHOLE
PK	SURVEY STATION	PK	SURVEY STATION
PK	ELEVATION	PK	ELEVATION
INV	INVERT	INV	INVERT
MB	BOREHOLE (LOC. APPROX.)	MB	BOREHOLE (LOC. APPROX.)
WL	WORK LIMIT	WL	WORK LIMIT

ABBREVIATIONS	
STM	STORM
SAN	SANITARY
WM	WATERMAIN
WTR	WATER
INV	INVERT
MH	MANHOLE
CB	CATCHBASIN
TL	TOP OF LID
OBV	OBVERT
FFE	FINISHED FLOOR ELEVATION
BLDG	BUILDING
SERV	SERVICE

No.	Date	Description	By
1	APR. 18, 2022	ISSUED FOR SITE PLAN APPLICATION	A.C.

TOPOGRAPHIC INFORMATION

- CHAUDIÈRE AND ALBERT ISLAND TOPOGRAPHIC INFORMATION PROVIDED BY FAIRHALL, MOFFATT & WOODLAND LIMITED, DATED JANUARY 15, 2015.
- BOOTH STREET/FLEET STREET/ALLOYD STREET/ALBERT STREET TOPOGRAPHIC INFORMATION PROVIDED BY STANTEC GEOMATICS LIMITED, DATED APRIL 20, 2018.
- TEMPORARY ROAD CHAUDIÈRE & ALBERT STREET TOPOGRAPHIC INFORMATION PROVIDED BY STANTEC GEOMATICS LIMITED, DATED AUGUST 06, 2019.

LEGAL INFORMATION

- LEGAL SURVEY PROVIDED BY STANTEC GEOMATICS LIMITED, DATED 2022

BENCH MARK

- MULTIPLE ON-SITE AS PER SURVEY
- JOB BENCH MARK #3 CP SET IN TOP OF CONCRETE WALL, ELEVATION = 50.204
- FOR BENCH MARK LOCATIONS REFER TO MASTER PLAN ZIBI ONTARIO DRAWING EX-1, PREPARED BY DSEL, DATED JUNE 27 2018

NOTE OF CAUTION

THE GEODETIC COORDINATES OF EVERY ITEM INCLUDED AS PART OF THIS DOCUMENT ARE IN NAD83 - ORIGINAL / MTM - REFERENCE SYSTEM AND HAVE NO LEGAL VALUE. THE SITE LAYOUT MUST BE COMPLETED USING THE OFFICIAL BENCHMARKS OF AN ACCREDITED LAND SURVEYOR IN THE NAD83 - ORIGINAL / MTM - REFERENCE SYSTEM.

THE UNDERGROUND FEATURES AND INFORMATION THAT APPEAR ON THE DRAWINGS WERE OBTAINED FROM THE PUBLIC UTILITY COMPANIES AND/OR FROM THE CITY EACH RESPECTIVELY.

ALL INFORMATION UNDER THE LEGEND 'EXISTING' IS FOR INFORMATION ONLY. COMPLETE OR EXACT LOCATION AND ELEVATION OF UNDERGROUND SERVICES ARE NOT GUARANTEED.

CERTAIN UNDERGROUND FEATURES ON PRIVATE PROPERTY ARE NOT SHOWN ON THE CURRENT DRAWING.

ANYONE WHO PROCEEDS WITH EXCAVATION WORK SHALL VERIFY THE EXACT LOCATION OF ALL UNDERGROUND FEATURES, BY EXPLORATORY EXCAVATIONS, AND SHALL ASSUME FULL RESPONSIBILITY IF THERE IS ANY DAMAGE THAT OCCURS DURING WORK.

THE CONTRACTOR WILL HAVE THE RESPONSIBILITY AND THE OBLIGATION TO VALIDATE, BY EXPLORATORY EXCAVATION, THE SIZE OF THE PUBLIC UTILITIES UNDERGROUND SERVICES AND TO WARN THE ENGINEER OF ANY CONFLICT WITH THE PROJECTED WORK.

DESIGNED BY	APPROVED BY
ENGINEER	
CIMA+	
CLIENT:	DREAM THEIA ONTARIO BLOCK 204A LP
PROJECT NAME:	ZIBI ONTARIO BLOCK 204 315 PRIVE MIWATE PRIVATE, CHAUDIÈRE ISLAND OTTAWA, ONTARIO
SHEET TITLE:	TOPOGRAPHICAL SURVEY PLAN
DISCIPLINE:	CIVIL
DRAWN BY: S.C. POGGIOLI	SCALE: 1:250
DESIGNED BY: J. SAUVE	DATE: 2022/03/14
APPROVED BY: A. CHAUMONT	APPROVER: A. CHAUMONT
PROJECT No: A000931	DRAWING No: C001
SHEET No: 1 of 11	