

PROJECT INFORMATION		PROJECT STATISTICS		BUILDING STATISTICS		UNIT STATISTICS		PARKING		AMENITY	
ZONING	MDS [2172] S332	BUILDING	BUILDING HEIGHT (ABOVE ROOF CONSTRUCTION EXCLUDED) (a.s.f.)	GROUND FLOOR	1309.0 m <sup>2</sup>	STUDIO	24	REQUIRED RESIDENT PARKING	0	TOTAL AMENITY: 242 UNITS x 6m <sup>2</sup>	1464.0
SITE AREA (m <sup>2</sup> )	2631	REAR YARD SETBACK FOR TOWER	10 m	MEZZANINE	0.0 m <sup>2</sup>	1 BED	110	PROVIDED RESIDENT PARKING	98	MIN. 50% COMMUNAL AREA	732.0
BUILDING HEIGHT (MD[2172] S332)	MAX 73m	INTERIOR SIDE TOWER (EAST)	13 m	LEVEL 2	1005.1 m <sup>2</sup>	1 BED + DEN	95	VISITOR (0.1 SPACES/DWELLING UNIT)	24	PROVIDED (m <sup>2</sup> )	
FLOOR SPACE INDEX	Not applicable	INTERIOR SIDE TOWER (WEST)	32 m	LEVEL 3	1001.1 m <sup>2</sup>	2 BED	66	Section 3.1.2, Table 3 Ottawa ADS		PRIVATE TERRACE/BALCONIES TOTAL	2064.0
SETBACKS MD[2172] S332	Schedule 332	LANDSCAPE OPEN SPACE	53 m <sup>2</sup> 2%	LEVEL 4	1001.1 m <sup>2</sup>	2 BED + DEN	9	OFF-SITE VISITOR PARKING*	24	COMMUNAL AREA EXTERIOR	736.2
FRONT	No minimum	DRIVING SURFACE	2102 m <sup>2</sup> 80%	LEVEL 5	1001.1 m <sup>2</sup>	PROJECT TOTAL	244	PROVIDED IN ADJACENT BLOCK 301, BENEATH HEAD ST. SQ. WITH DIRECT ACCESS TO GARAGE BENEATH BLOCK 204		COMMUNAL AREA INTERIOR	349.0
REAR	No minimum	LANDSCAPE OPEN SPACE	476 m <sup>2</sup> 18%	LEVEL 6	892.6 m <sup>2</sup>	TOTAL VISITOR PARKING PROVIDED	98	TOTAL COMMUNAL SPACE PROVIDED	1085.2	TOTAL AMENITY PROVIDED (m <sup>2</sup> )	3149.2
INTERIOR YARD	No minimum	TOTAL	2631 m <sup>2</sup> 100%	LEVEL 7	892.6 m <sup>2</sup>	BICYCLE PARKING REQUIRED					
INTERIOR SIDE AND REAR YARD SETBACK FOR TOWER	7.5m	LEVEL 8	892.6 m <sup>2</sup>	LEVEL 8	892.6 m <sup>2</sup>	RESIDENCE (0.5 SPACES/DWELLING UNIT)	122				
MINIMUM SEPARATION DISTANCE BETWEEN TOWERS ON THE SAME LOT	15m	LEVEL 9	577.3 m <sup>2</sup>	LEVEL 9	577.3 m <sup>2</sup>	RETAIL (1 per 250m <sup>2</sup> GFA)	6				
		LEVEL 10	592.7 m <sup>2</sup>	LEVEL 10	592.7 m <sup>2</sup>	TOTAL BICYCLE PARKING SPACES PROVIDED	258				
		LEVEL 11	605.5 m <sup>2</sup>	LEVEL 11	605.5 m <sup>2</sup>	(INC. 6 EXTERIOR SPACES)					
		LEVEL 12	605.5 m <sup>2</sup>	LEVEL 12	605.5 m <sup>2</sup>						
		LEVEL 13	605.5 m <sup>2</sup>	LEVEL 13	605.5 m <sup>2</sup>						
		LEVEL 14	605.5 m <sup>2</sup>	LEVEL 14	605.5 m <sup>2</sup>						
		LEVEL 15	605.5 m <sup>2</sup>	LEVEL 15	605.5 m <sup>2</sup>						
		LEVEL 16	605.5 m <sup>2</sup>	LEVEL 16	605.5 m <sup>2</sup>						
		LEVEL 17	605.5 m <sup>2</sup>	LEVEL 17	605.5 m <sup>2</sup>						
		LEVEL 18	605.5 m <sup>2</sup>	LEVEL 18	605.5 m <sup>2</sup>						
		LEVEL 19	605.5 m <sup>2</sup>	LEVEL 19	605.5 m <sup>2</sup>						
		LEVEL 20	605.5 m <sup>2</sup>	LEVEL 20	605.5 m <sup>2</sup>						
		LEVEL 21	605.5 m <sup>2</sup>	LEVEL 21	605.5 m <sup>2</sup>						
		LEVEL 22	605.5 m <sup>2</sup>	LEVEL 22	605.5 m <sup>2</sup>						
		PROJECT TOTAL	16,431.2 m <sup>2</sup>	PROJECT TOTAL	16,431.2 m <sup>2</sup>						

*Andrew McCreight*

**ANDREW MCCREIGHT**  
**MANAGER (A), DEVELOPMENT REVIEW CENTRAL**  
**PLANNING, REAL ESTATE & ECONOMIC DEVELOPMENT**  
**DEPARTMENT, CITY OF OTTAWA**

**APPROVED**  
 By Andrew McCreight at 9:30 am, May 23, 2023

**TOPOGRAPHIC INFORMATION**

- CHAUDIÈRE AND ALBERT ISLAND TOPOGRAPHIC INFORMATION PROVIDED BY FAIRHALL, MOFFATT & WOODLAND LIMITED, DATED JANUARY 15, 2015. JOB NO. T41200

**LEGAL INFORMATION**

- LEGAL SURVEY PROVIDED BY STANTEC GEOMATICS LIMITED, DATED 2022. PROJECT NO. 161613467-1014

- SITE BOUNDARY INFORMATION PROVIDED BY PLAN # 4R-32359



GENERAL NOTES

- These architectural documents are the exclusive property of HDR Architecture Associates and NEUF architect(e)s and cannot be used, copied or reproduced without written pre-authorization.
- All dimensions which appear on the documents must be verified by the contractor before to start the work.
- The architect must be notified of all errors, omissions and discrepancies between these documents and those of the other professionals.
- The dimensions on these documents must be read and not measured.

Structural Engineer  
**RJC Engineers**  
 1540 Carling Avenue, Suite 304  
 Ottawa, ON, K1Z 8P9

Electrical & Mechanical Engineer  
**Smith + Andersen**  
 1600 Carling Avenue, Suite 530  
 Ottawa, ON, K1Z 1G3

Planning  
**Folenn Planning + Design**  
 318 Cooper Street, Suite 300  
 Ottawa, ON, K2P 2H7

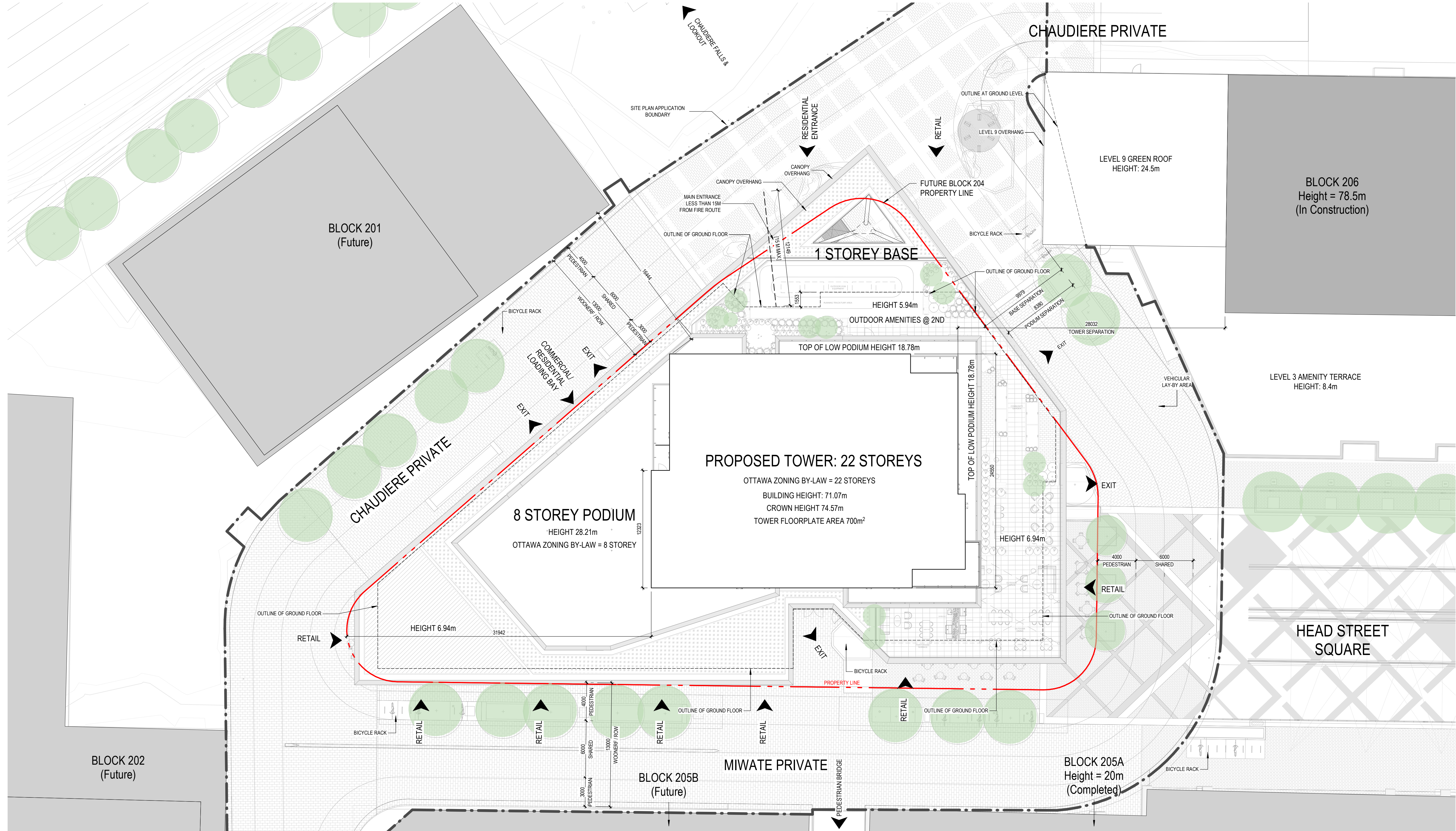
Landscape Architect  
**CSW**  
 319 McRae Avenue, Suite 502  
 Ottawa, ON, K1Z 0S9

Civil  
**CIMA**  
 240 Catherine Street, Unit 110  
 Ottawa, ON, K2P 2G8

Architect  
**NEUF architect(e)s CANADA INC.**  
 47 Clarence St, Suite 406, Ottawa, ON K1N 9K1



**SEAL:**



Autodesk Docs://12791\_ZIBI/ZIBI\_12791\_ARC\_INT\_R22.rvt



Client  
**DREAM UNLIMITED**  
 30 Adelaide Street East  
 Suite 301  
 Toronto, ON, M5C 3H1  
 T: (416) 365-3535

**ZIBI**  
 6 Booth Street (Albert Island)  
 Ottawa, ON, M1R 6K8

Project  
**ZIBI - BLOCK 204**

Location  
**315 Miwate Private**  
 Ottawa, ON

NO	REVISION	DATE (yy-mm-dd)
A	ISSUED FOR SITE PLAN CONTROL APPLICATION	2022-04-21
B	ISSUED FOR SITE PLAN CONTROL APPLICATION RE-SUBMISSION	2022-09-15
C	ISSUED FOR SITE PLAN CONTROL APPLICATION RE-SUBMISSION	2022-12-02
D	ISSUED FOR SITE PLAN CONTROL RE-SUBMISSION	2023-02-17

**Preliminary**  
**DO NOT USE FOR CONSTRUCTION**

Drawn by  
 AC / EW  
 DATE (yy-mm-dd)  
 09/01/22  
 Drawing Title  
**SITE PLAN**

Checked by  
 CI / LK  
 Scale  
 1 : 200

Revision  
**D**  
 Drawing Number  
**SPA-A100**  
 #18749

D07-12-22-0071