

GENERAL NOTES  
 1. These architectural documents are the exclusive property of HDR Architecture Associates and NEUF architects and cannot be used, copied or reproduced without written pre-authorization.  
 2. All dimensions which appear on the documents must be verified by the contractor before to start the work.  
 3. The architect must be notified of all errors, omissions and discrepancies between these documents and those of the others professionals.  
 4. The dimensions on these documents must be read and not measured.

Structural Engineer  
**RJC Engineers**  
 1540 Carling Avenue Suite 304  
 Ottawa, ON, K1Z 8P9

Electrical & Mechanical Engineer  
**Smith + Andersen**  
 1600 Carling Avenue, Suite 530  
 Ottawa, ON, K1Z 1G3

Planning  
**Folenn Planning + Design**  
 388 Cooper Street, Suite 300  
 Ottawa, ON, K2P 2H7

Landscape Architect  
**CSW**  
 319 McRae Avenue, Suite 502  
 Ottawa, ON, M1Z 6S9

Civil  
**CIMA**  
 240 Catherine Street, Unit 110  
 Ottawa, ON, K2P 2G8

Architect  
**NEUF architect(e)s CANADA INC.**  
 47 Clarence St. Suite 406, Ottawa, ON K1N 9K1



Client  
**DREAM UNLIMITED**  
 30 Adelaide Street East  
 Suite 301  
 Toronto, ON, M5C 3H1

**ZIBI**  
 6 Booth Street (Abart Island)  
 Ottawa, ON, M1R 6K8

Project  
**ZIBI - BLOCK 204**

Location PROJECT No.  
**315 Miwate Private** 0000.00  
**Ottawa, ON**

NO REVISION DATE (yy-mm-dd)  
 0 ISSUED FOR SITE PLAN APPLICATION 2022-04-14

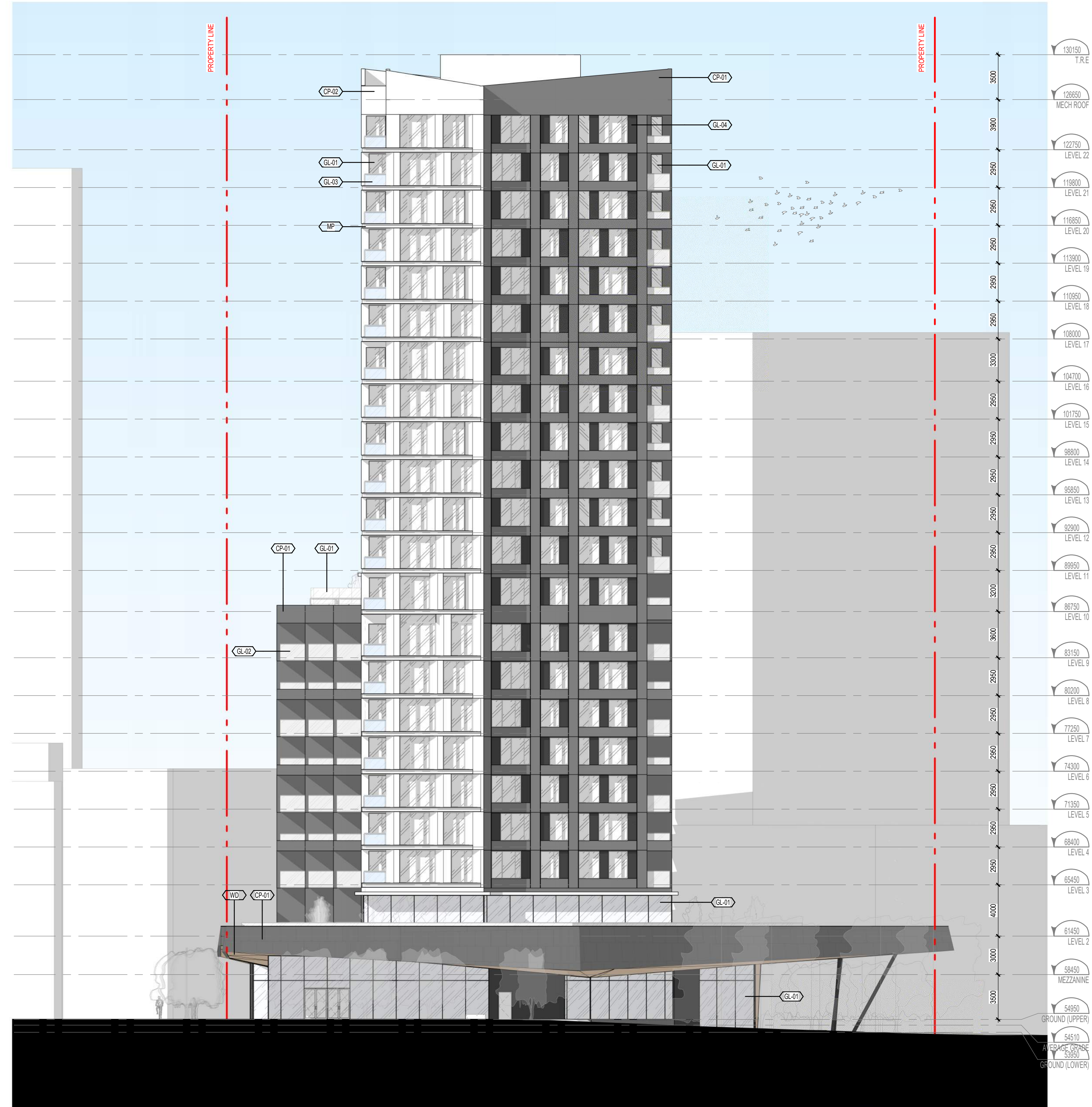
Preliminary  
 DO NOT USE FOR  
 CONSTRUCTION

Drawn by  
**AC / BMP / EW** Checked by  
**CL / LK**  
 DATE (yy-mm-dd) Scale  
 22.03.21 As indicated

Drawing Title  
**ELEVATION - EAST**

Revision Drawing Number  
**0 A412**

MATERIAL LEGEND	
	GL-01 CLEAR GLAZING
	GL-02 GREY-TINTED FROSTED GLASS RAIL
	GL-03 FROSTED GLASS RAIL
	GL-04 DARK SPANDEL GLAZING
	CP-01 GREY CEMENTITIOUS CLADDING
	CP-02 WHITE CEMENTITIOUS CLADDING
	MP METAL PANEL
	WD WOOD SLAT CLADDING



EAST ELEVATION  
 1:200

1  
 A412