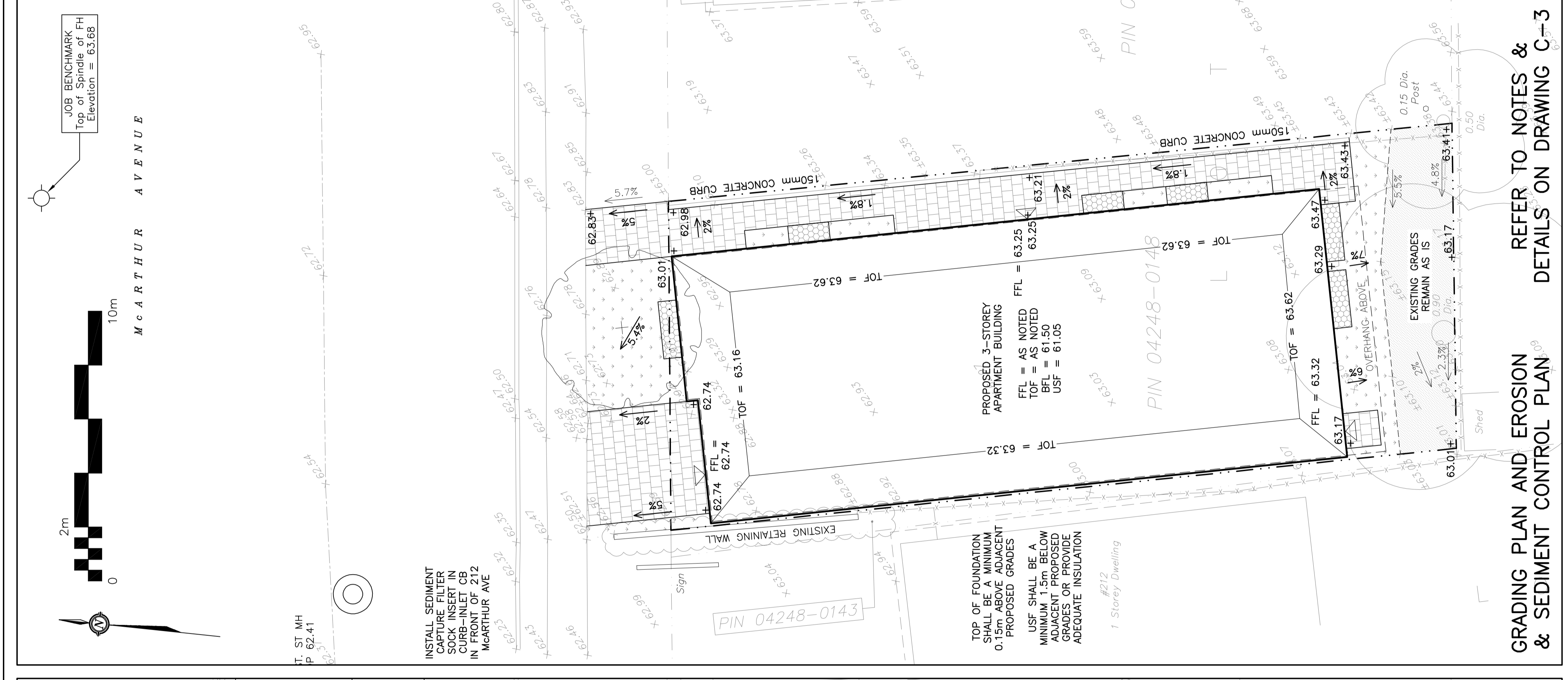
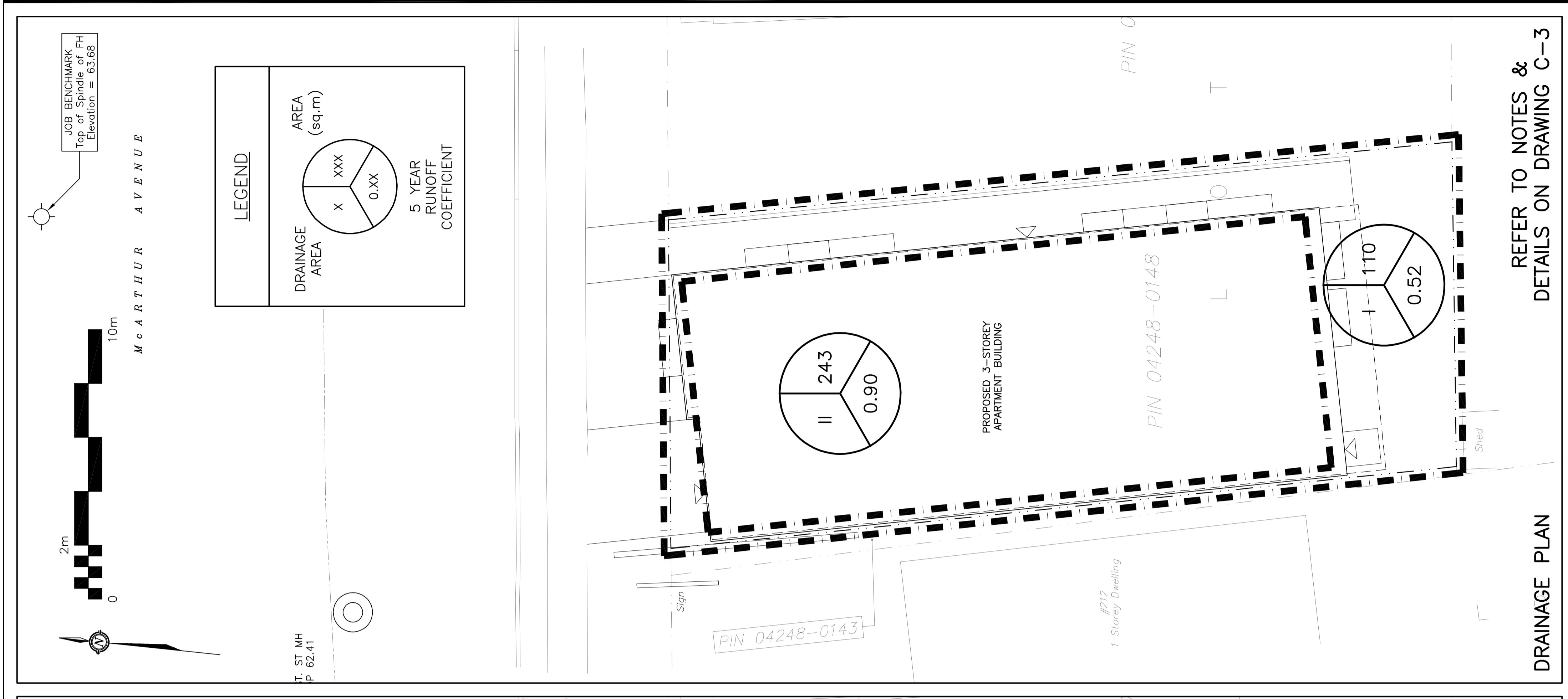


EXISTING CONDITIONS, REMOVALS & DECOMMISSIONING PLAN
REFER TO NOTES & DETAILS ON DRAWING C-3



GRADING PLAN AND EROSION CONTROL PLAN
REFER TO NOTES & DETAILS ON DRAWING C-3



DRAINAGE PLAN
REFER TO NOTES & DETAILS ON DRAWING C-3

LEGEND

- MH STORM MANHOLE
- FH FIRE HYDRANT
- SAN SANITARY SEWER
- ST STORM SEWER
- WS/WM WATER SERVICE/WATERMAIN
- FFL FINISHED FLOOR ELEVATION
- TOF TOP OF FOUNDATION
- BFL BASEMENT FLOOR ELEVATION
- USF UNDERSIDE OF FOOTING
- PROPERTY LINE
- +99.99 EXISTING GRADE ELEVATION
- +99.99 PROPOSED GRADE ELEVATION
- 2% PROPOSED SLOPE OF GRADE
- T.O.S TOP OF SLOPE
- CENTERLINE OF SWALE
- INTERLOCK
- LANDSCAPE
- WINDOW WELL

KEY PLAN

No.	DATE	REVISION
6	JUN 19-23	RE-ISSUED FOR APPROVAL
5	JUN 15-23	ISSUED FOR COORDINATION
4	FEB 2-23	RE-ISSUED FOR APPROVAL
3	NOV 22-22	RE-ISSUED FOR APPROVAL
2	FEB 16-22	ISSUED FOR APPROVAL
1	JAN 5-22	ISSUED FOR COORDINATION

D.B. GRAY ENGINEERING INC.
Professional Engineering & Drafting - Since 1989
 700 Long Point Circle
 Ottawa, Ontario K1L 1G7
 613-425-8044
 d.gray@dbgryengineering.com

Project: **PROPOSED 3-STOREY APARTMENT BUILDING**
 216 MARTHUR AVENUE
 OTTAWA, ONTARIO

Drawing Title: **EXISTING CONDITIONS, GRADING PLAN AND DRAINAGE PLAN**

Engineer's Seal:

Drawn: D.B.C.
 H. Scale: 1:100
 V. Scale: 1:100
 Date: JAN 5-22
 Job No.: 20123

Drawing No.: **C-2**
 of **3**

#18797