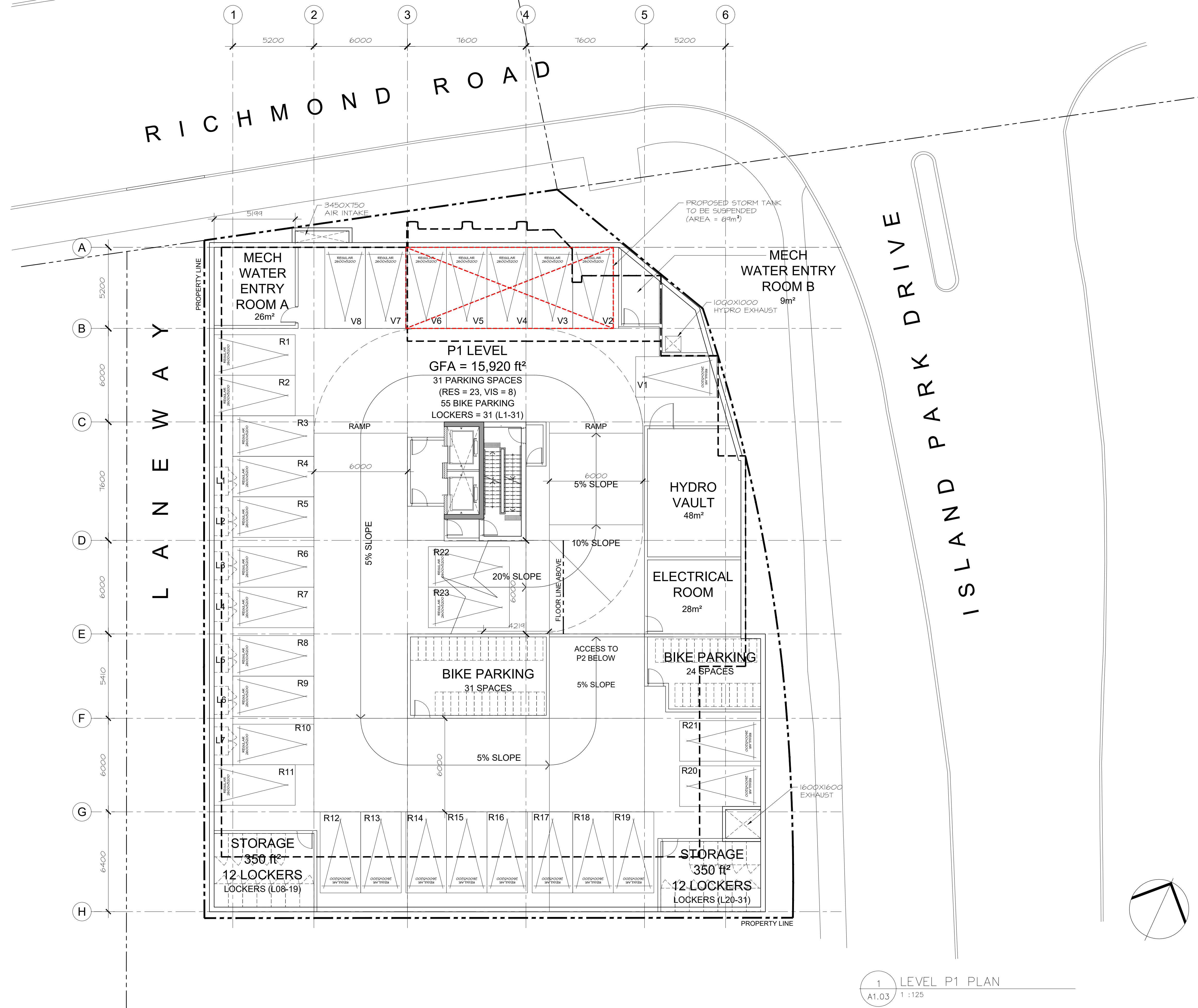


LEVEL P1  
 GFA = 15,721 ft<sup>2</sup>  
 RES = 23  
 VIS = 8  
 TOTAL = 31 PARKING SPACES

BIKE PARKING = 55  
 LOCKERS = 31



no.	date	revision
01	13/MAY/22	ISSUED FOR SPA

It is the responsibility of the appropriate contractor to check and verify all dimensions on site and report all errors and/or omissions to the architect.

All contractors must comply with all pertinent codes and by-laws.

Do not scale drawings.

This drawing may not be used for construction until signed.

Copyright reserved.

**Hobin Architecture Incorporated**  
 63 Pamela Street  
 Ottawa, Ontario  
 Canada K1S3K7  
 T: 613-238-7200  
 F: 613-235-2005  
 E: mail@hobinarc.com  
 hobinarc.com



**HOBIN**  
ARCHITECTURE

PROJECT/LOCATION:  
 70 RICHMOND

DRAWING TITLE:  
 LEVEL P1 PLAN

DRAWN BY: RL DATE: 2022-05-13 SCALE: 1:125

PROJECT: 1909 DRAWING NO.:

1 LEVEL P1 PLAN  
 A1.03 1:125

ONTARIO ASSOCIATION OF ARCHITECTS  
 PART 1 HOBIN  
 LICENCE 3049

**A1.03**

REVISION NO.:  
 DWG 0000